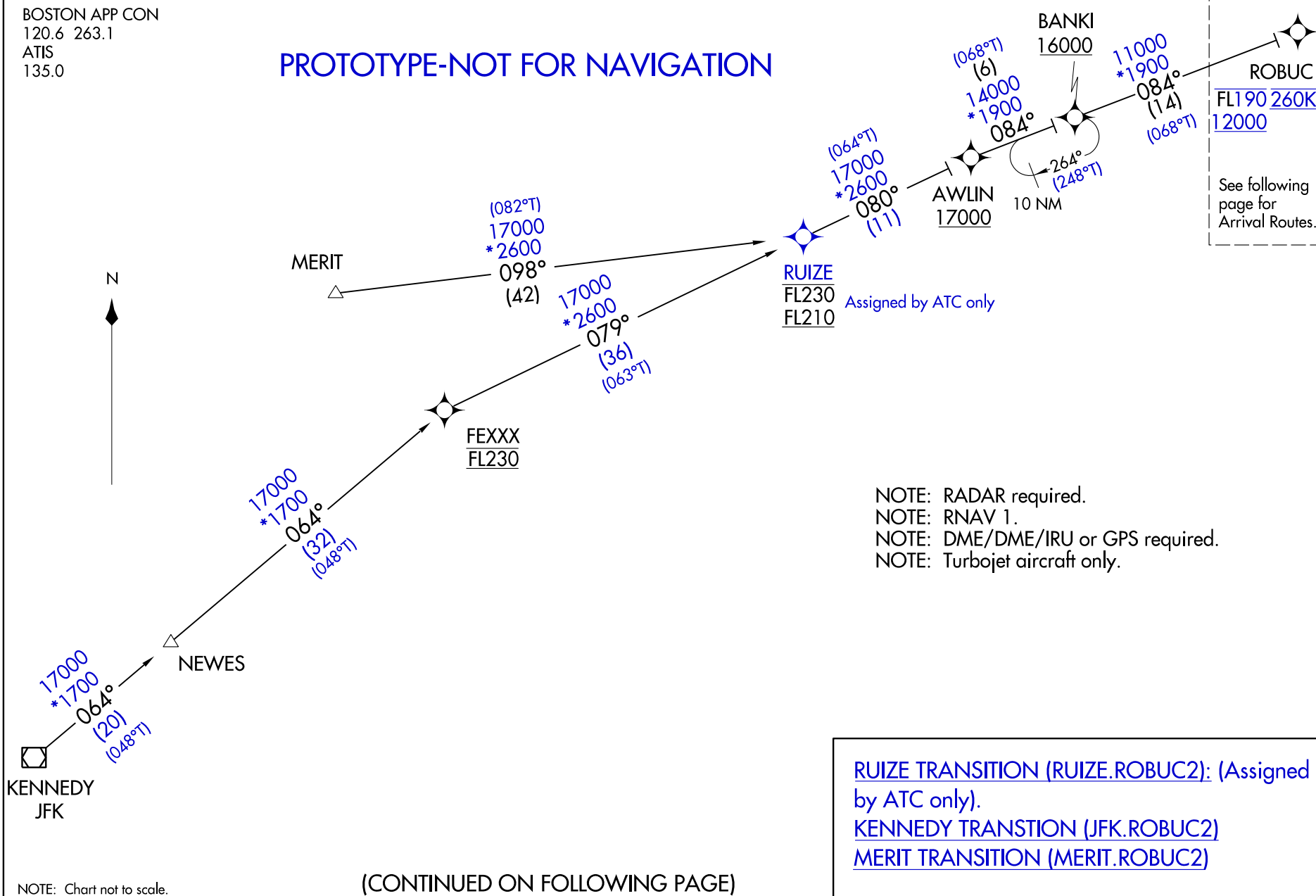


Flight Procedure Tracking Form		Action: FLIGHT CHECK	Task Type: STAR	Date Open: 09/03/2015	Task #: 2014120815122501003	Request #: 20141208151225
Procedure: STAR ROBUC (RNAV) TWO BOSTON MA KBOS			Airport ID: KBOS	Airport: GENERAL EDWARD LAWRENCE LOGAN INTL		Reimbursable #: NO
City: BOSTON	ST: MA	GPS #:		Estimated Chart Date: 05/26/2016		FICO #:
Fac ID: N/A		Fac. Type:			Specialist: Jeff Anderson	
Procedure Review						
	Rec'd	Rel'd	Full Name		Comments	
Lead:	12/01/2015					
QA:						
Liaison:						
Procedure Comments:			ENROUTE	Remark Type: INFORMATION		
CONTACT: JULIE MORGAN, AJV-352 LEAD, 405.954-8586						



BOSTON APP CON
120.6 263.1
ATIS
135.0

PROTOTYPE-NOT FOR NAVIGATION



(CONTINUED ON FOLLOWING PAGE)

NOTE: Chart not to scale.

ARRIVAL ROUTE DESCRIPTION

From ROBUC on track 085° to cross PROVI at or above 11000 then on track 076° to JOODY. Then on assigned Runway transition.

LANDING RWY 04L: from JOODY on track 036° to cross SOFEE between 9000 and 10000 and at 220K, then on track 036° to cross ERNEI between 7000 and 8000, then on track 018° to cross NUNZO at 6000 and at 210K, then on track 018°.

Expect RADAR vectors to final approach course.

LANDING RWY 04R: from JOODY on track 036° to cross SOFEE between 9000 and 10000 and at 220K, then on track 036° to cross ERNEI between 7000 and 8000, then on track 036° to cross GOSHI at 6000 and at 210K, then on track 036°.

Expect RADAR vectors to final approach course.

LANDING RWY 15R: from JOODY on track 076° to cross JAYNA at 11000 and at 250K, then on track 035° to cross BOXRS at 8000 and at 250K, then on track 035° to cross CHERS at 6000 and at 220K, then on track 329° to cross RDHOK at 6000 and at 210K, then on track 330° to cross TKMAN at 6000 and at 210K, then on track 330°.

Expect RADAR vectors to final approach course.

LANDING RWYs 22R, 22L: from JOODY on track 076° to cross KRANN between 11000 and 12000 and at 250K, then on track 076° to cross CRADL between 8000 and 10000, then on track 064° to cross KLEBB at 8000 and at 250K, then on track 028° to cross ETHYN at 5000 and at 250K, then on track 332° to cross PTRIK at 5000 and at 220K, then on track 036° to cross TAALE at 5000 and at 210K, then on track 036°.

Expect RADAR vectors to final approach course.

LANDING RWY 27: from JOODY on track 076° to cross KRANN between 11000 and 12000 and at 250K, then on track 076° to cross CRADL between 8000 and 10000, then on track 064° to cross KLEBB at 8000 and at 250K, then on track 025° to cross HOKDU at 5000 and at 210K, then on track 025°.

Expect RADAR vectors to final approach course.

LANDING RWYs 32, 33L: from JOODY on track 076° to cross JAYNA at 11000 and at 250K, then on track 075° to cross ANSLY at 8000 and at 240K, then on track 072° to cross BEREI between 6000 and 7000 and at 220K, then on track 061° to cross BBOGG at 6000 and at 210K, then on track 061°.

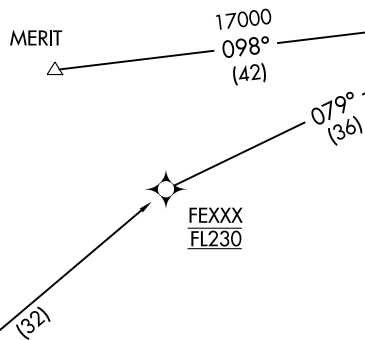
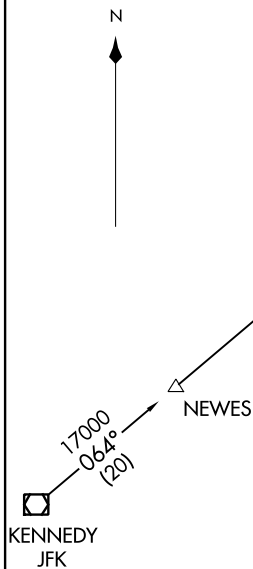
Expect RADAR vectors to final approach course.

PROTOTYPE-NOT FOR NAVIGATION

ROBUC ONE ARRIVAL (RNAV) Transition Routes
(ROBUC.ROBUC1) 14317

BOSTON APP CON
120.6 263.1
ATIS
135.0

OLD



FEXXX
FL230



GIGTY
FL230
FL210

NOTE: Radar required.
NOTE: RNAV 1.
NOTE: DME/DME/IRU or GPS required.
NOTE: Turbojet aircraft only.

GIGTY TRANSITION (GIGTY.ROBUC1):
KENNEDY TRANSITION (JFK.ROBUC1):
MERIT TRANSITION (MERIT.ROBUC1):

(CONTINUED ON FOLLOWING PAGE)

See following
page for
Arrival Routes.

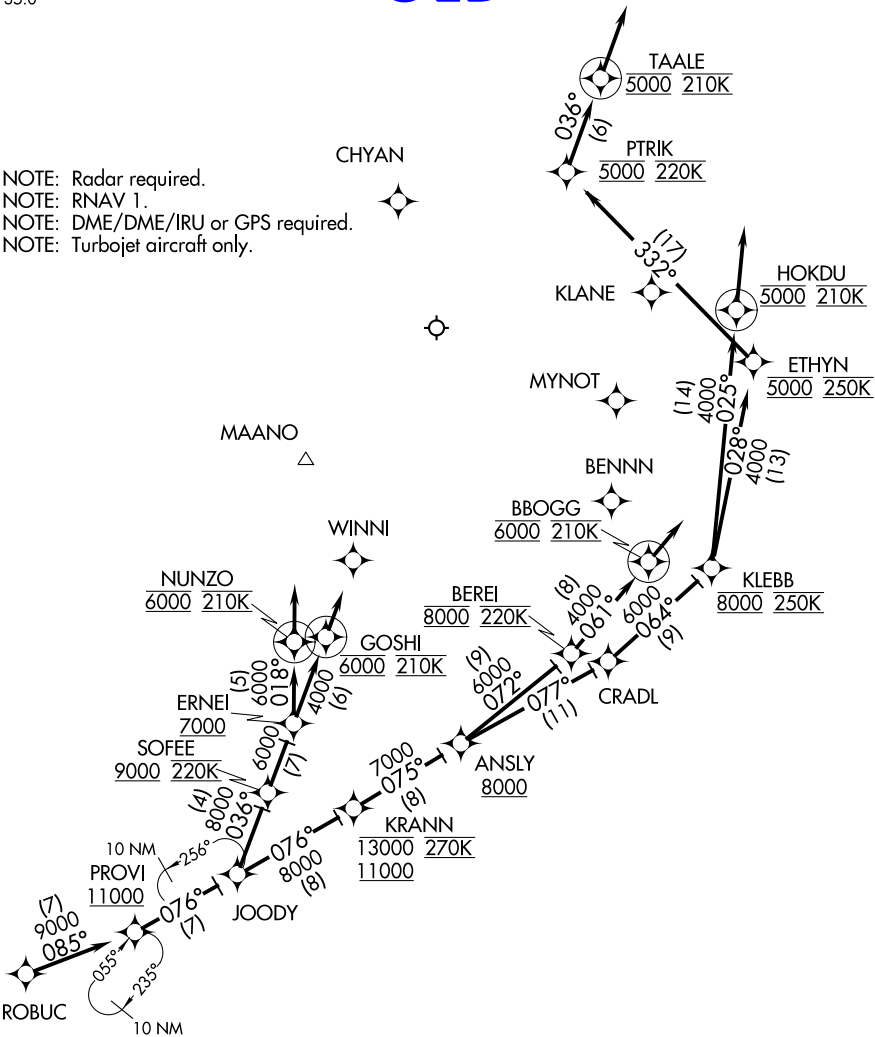
ROBUC

(ROBUC.ROBUC1) 14317
ST-58 (FAA)
GENERAL EDWARD LAWRENCE LOGAN INTL (BOS)
Transition Routes
BOSTON, MASSACHUSETTS

BOSTON APP CON
120.6 263.1
ATIS
135.0

OLD

NOTE: Radar required.
NOTE: RNAV 1.
NOTE: DME/DME/IRU or GPS required.
NOTE: Turbojet aircraft only.



NOTE: Chart not to scale. (NARRATIVE ON FOLLOWING PAGE)

OLD

ARRIVAL ROUTE DESCRIPTION

From ROBUC on track 085° to cross PROVI at or above 11000, then on track 076° to JOODY.

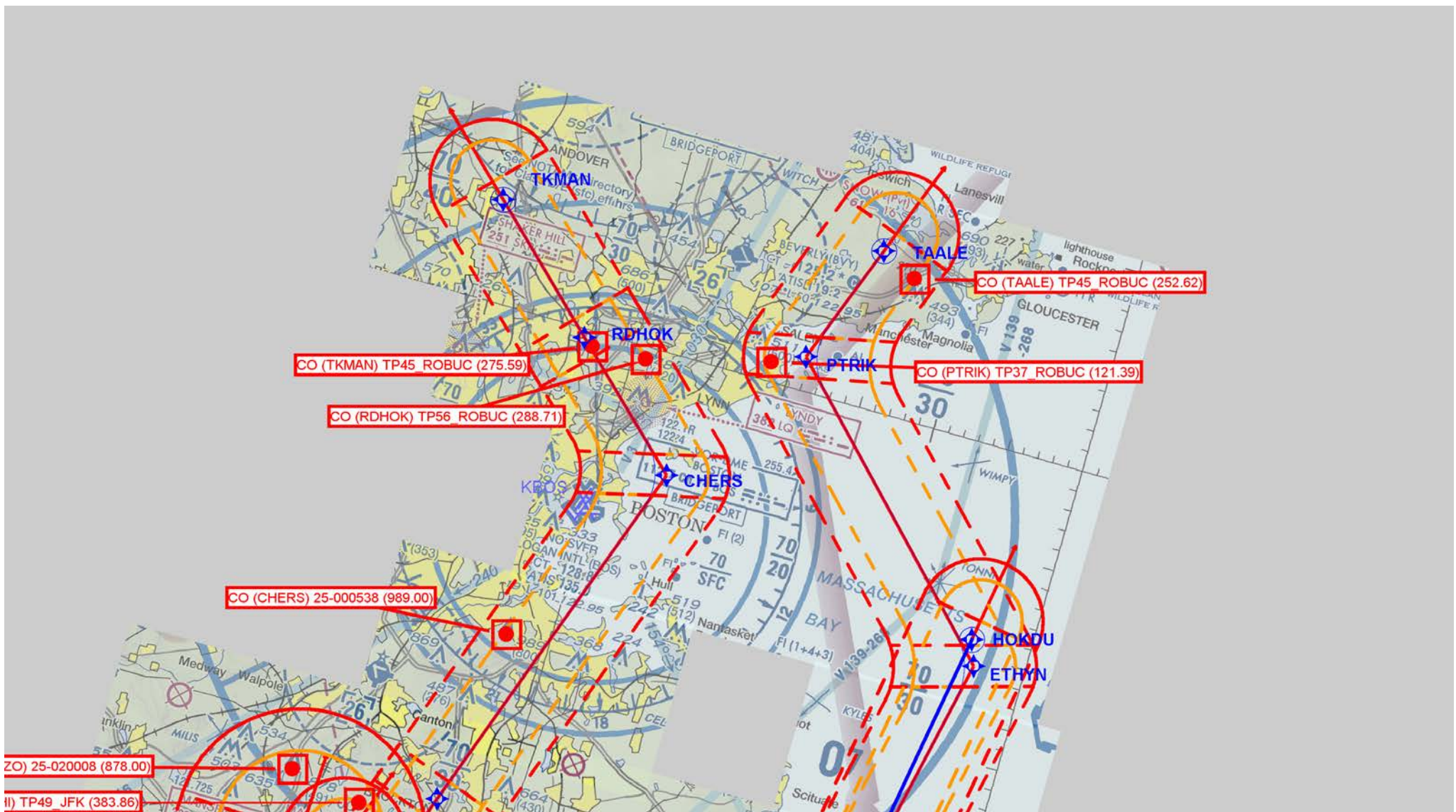
LANDING RWY 04R: From JOODY on track 036° to cross SOFEE at or above 9000 and at 220K, then on track 036° to cross ERNEI at or above 7000, then on track 036° to cross GOSHI at 6000 and at 210K, then on track 036°. Expect radar vectors to final approach course.

LANDING RWY 04L, 15R: From JOODY on track 036° to cross SOFEE at or above 9000 and at 220K, then on track 036° to cross ERNEI at or above 7000, then on track 018° to cross NUNZO at 6000 and at 210K, then on track 018°. Expect radar vectors to final approach course.

LANDING RWY 22L, 22R: From JOODY on track 076° to cross KRANN between 11000 and 13000 and at 270K, then on track 075° to cross ANSLY at or above 8000, then on track 077° to CRADL, then on track 064° to cross KLEBB at 8000 and at 250K, then on track 028° to cross ETHYN at 5000 and at 250K, then on track 332° to cross PTRIK at 5000 and at 220K, then on track 036° to cross TAALE at 5000 and at 210K, then on track 036°. Expect radar vectors to final approach course.

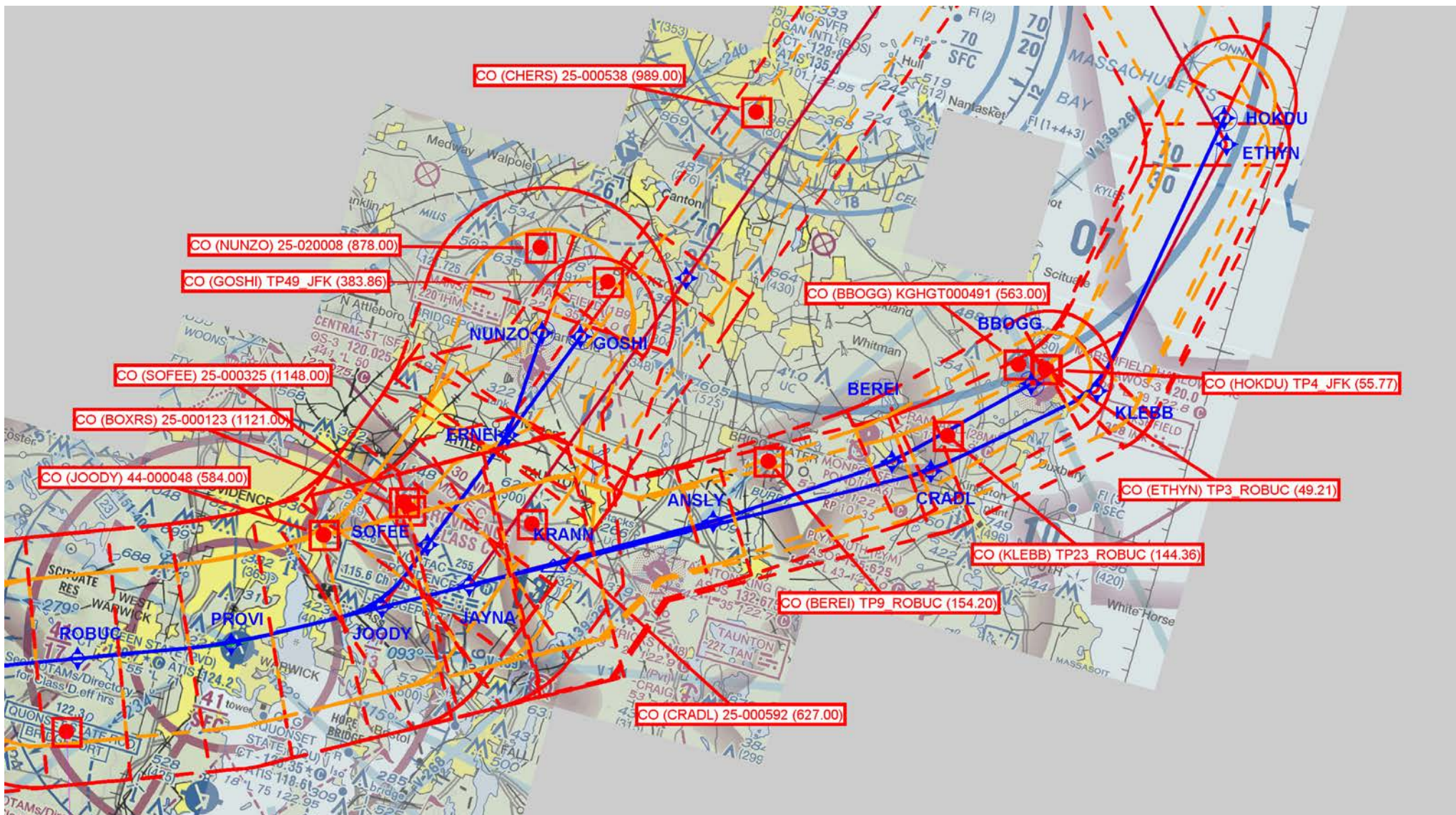
LANDING RWY 27: From JOODY on track 076° to cross KRANN between 11000 and 13000 and at 270K, then on track 075° to cross ANSLY at or above 8000, then on track 077° to CRADL, then on track 064° to cross KLEBB at 8000 and at 250K, then on track 025° to cross HOKDU at 5000 and at 210K, then on track 025°. Expect radar vectors to final approach course.

LANDING RWY 33L, 32: From JOODY on track 076° to cross KRANN between 11000 and 13000 and at 270K, then on track 075° cross ANSLY at or above 8000, then on track 072° to cross BEREI at 8000 and at 220K, then on track 061° to cross BBOGG at 6000 and at 210K, then on track 061°. Expect radar vectors to final approach course.



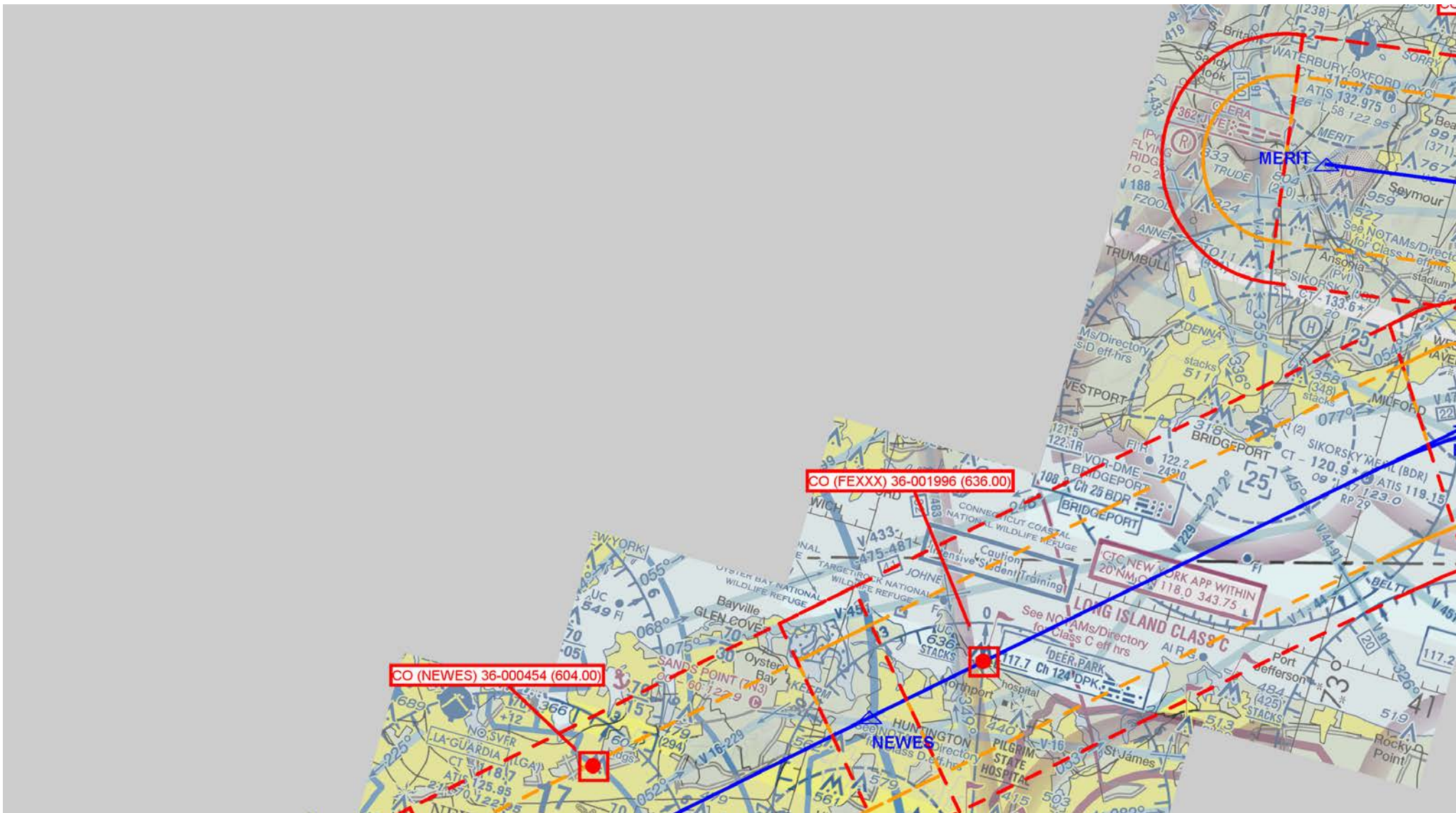
1 of 5

ROBUG (RNAV)



2 of 5

ROBUC (RNAV)



4 of 5

ROBUC (RNAV)

