

US DEPARTMENT of TRANSPORTATION - FEDERAL AVIATION ADMINISTRATION
STANDARD TERMINAL ARRIVAL (STAR)

Bearings, headings, courses, tracks and radials are magnetic. Elevations and altitudes are in feet. MSL. Altitudes are minimum altitudes unless otherwise indicated.
 Distances are in nautical miles (NM). Graphic depiction attached.

Arrival Name ROBUC (RNAV)	Number TWO	STAR Computer Code ROBUC.ROBUC2	Superseded Number ONE	Dated 13 NOV 2014	Effective Date
-------------------------------------	----------------------	---	---------------------------------	-----------------------------	----------------

TRANSITION ROUTES:

Transition Name	Transition Computer Codes	From FIX/NAVAID	To FIX/NAVAID	Mag Course	Distance	MEA	MOCA	MAA	Crossing Altitudes / Fixes
KENNEDY	JFK.ROBUC2	JFK VOR/DME	JFK VOR/DME						
		JFK VOR/DME	NEWES	064.00	20.00	17000	1700		
		NEWES	FEXXX	064.21	32.09	17000	1700		AT FL230
		FEXXX	RUIZE	079.04	35.78	17000	2600		BETWEEN FL210 AND FL230
		RUIZE	AWLIN	079.98	10.54	17000	2600		AT/ABOVE 17000
		AWLIN	BANKI	084.19	06.38	14000	1900		AT/ABOVE 16000
		BANKI	ROBUC	084.46	13.66	11000	1900		BETWEEN 12000 AND FL190
MERIT	MERIT.ROBUC2	MERIT	MERIT						
		MERIT	RUIZE	097.75	42.29	17000	2600		BETWEEN FL210 AND FL230
		RUIZE	AWLIN	079.98	10.54	17000	2600		AT/ABOVE 17000
		AWLIN	BANKI	084.19	06.38	14000	1900		AT/ABOVE 16000
		BANKI	ROBUC	084.46	13.66	11000	1900		BETWEEN 12000 AND FL190
RUIZE	RUIZE.ROBUC2	RUIZE	RUIZE						BETWEEN FL210 AND FL230
		RUIZE	AWLIN	079.98	10.54	17000	2600		AT/ABOVE 17000
		AWLIN	BANKI	084.19	06.38	14000	1900		AT/ABOVE 16000
		BANKI	ROBUC	084.46	13.66	11000	1900		BETWEEN 12000 AND FL190

ARRIVAL ROUTE DESCRIPTION:

FROM ROBUC ON TRACK 084.65/7.40 TO CROSS PROVI AT OR ABOVE 11000 (MEA 9000/MOCA 1900), THEN ON TRACK 076.22/7.45 TO JOODY (MEA 9000/MOCA 1600). THEN ON ASSIGNED RUNWAY TRANSITION.

LANDING RWY 4L: FROM JOODY ON TRACK 036.33/3.70 TO CROSS SOFEE BETWEEN 9000 AND 10000 AND AT 220 KIAS (MEA 8000/MOCA 2200), THEN ON TRACK 036.32/6.50 TO CROSS ERNEI BETWEEN 7000 AND 8000 (MEA 6000/MOCA 2200), THEN ON TRACK 018.39/5.17 TO CROSS NUNZO AT 6000 AND AT 210 KIAS (MEA 6000/MOCA 1900), THEN ON TRACK 018.39. EXPECT RADAR VECTORS TO FINAL APPROACH COURSE.

LANDING RWY 4R: FROM JOODY ON TRACK 036.33/3.70 TO CROSS SOFEE BETWEEN 9000 AND 10000 AND AT 220 KIAS (MEA 8000/MOCA 2200), THEN ON TRACK 036.32/6.50 TO CROSS ERNEI BETWEEN 7000 AND 8000 (MEA 6000/MOCA 2200), THEN ON TRACK 036.29/5.86 TO CROSS GOSHI AT 6000 AND AT 210 KIAS (MEA 4000/MOCA 1600), THEN ON TRACK 036.29. EXPECT RADAR VECTORS TO FINAL APPROACH COURSE.

LANDING RWY 15R: FROM JOODY ON TRACK 076.31/4.33 TO CROSS JAYNA AT 11000 AND AT 250 KIAS (MEA 8000/MOCA 2200), THEN ON TRACK 035.16/18.00 TO CROSS BOXRS AT 8000 AND AT 250 KIAS (MEA 5000/MOCA 2200), THEN ON TRACK 035.24/19.10 TO CROSS CHERS AT 6000 AND AT 220 KIAS (MEA 4000/MOCA 2000), THEN ON TRACK 329.45/7.70 TO CROSS RDHOK AT 6000 AND AT 210 KIAS (MEA 4000/MOCA 1500), THEN ON TRACK 329.80/7.68 TO CROSS TKMAN AT 6000 AND AT 210 KIAS (MEA 4000/MOCA 1500), THEN ON TRACK 329.80. EXPECT RADAR VECTORS TO FINAL APPROACH COURSE.

US DEPARTMENT of TRANSPORTATION - FEDERAL AVIATION ADMINISTRATION
STANDARD TERMINAL ARRIVAL (STAR)

Bearings, headings, courses, tracks and radials are magnetic. Elevations and altitudes are in feet. MSL. Altitudes are minimum altitudes unless otherwise indicated.
Distances are in nautical miles (NM). Graphic depiction attached.

Arrival Name	Number	STAR Computer Code	Superseded Number	Dated	Effective Date
ROBUC (RNAV)	TWO	ROBUC.ROBUC2	ONE	13 NOV 2014	

LANDING RWY 22R/L: FROM JOODY ON TRACK 076.32/8.47 TO CROSS KRANN BETWEEN 11000 AND 12000 AND AT 250 KIAS (MEA 8000/MOCA 1700), THEN ON TRACK 075.92/18.62 TO CROSS CRADL BETWEEN 8000 AND 10000 (MEA 7000/MOCA 1700), THEN ON TRACK 064.10/8.82 TO CROSS KLEBB AT 8000 AND AT 250 KIAS (MEA 6000/MOCA 1400), THEN ON TRACK 027.70/13.32 TO CROSS ETHYN AT 5000 AND AT 250 KIAS (MEA 4000/MOCA 1300), THEN ON TRACK 331.80/16.88 TO CROSS PTRIK AT 5000 AND AT 220 KIAS (MEA 4000/MOCA 1400), THEN ON TRACK 035.99/6.32 TO CROSS TAALE AT 5000 AND AT 210 KIAS (MEA 4000/MOCA 1500), THEN ON TRACK 035.99. EXPECT RADAR VECTORS TO FINAL APPROACH COURSE.

LANDING RWY 27: FROM JOODY ON TRACK 076.32/8.47 TO CROSS KRANN BETWEEN 11000 AND 12000 AND AT 250 KIAS (MEA 8000/MOCA 1700), THEN ON TRACK 075.92/18.62 TO CROSS CRADL BETWEEN 8000 AND 10000 (MEA 7000/MOCA 1700), THEN ON TRACK 064.10/8.82 TO CROSS KLEBB AT 8000 AND AT 250 KIAS (MEA 6000/MOCA 1400), THEN ON TRACK 025.00/14.40 TO CROSS HOKDU AT 5000 AND AT 210 KIAS (MEA 4000/MOCA 1300), THEN ON TRACK 025.00. EXPECT RADAR VECTORS TO FINAL APPROACH COURSE.

LANDING RWY 32, 33L: FROM JOODY ON TRACK 076.31/4.33 TO CROSS JAYNA AT 11000 AND AT 250 KIAS (MEA 8000/MOCA 2200), THEN ON TRACK 075.25/12.08 TO CROSS ANSLY AT 8000 AND AT 240 KIAS (MEA 7000/MOCA 1700), THEN ON TRACK 071.50/9.02 TO CROSS BEREI BETWEEN 6000 AND 7000 AND AT 220 KIAS (MEA 6000/MOCA 1400), THEN ON TRACK 060.68/7.62 TO CROSS BBOGG AT 6000 AND AT 210 KIAS (MEA 4000/MOCA 1600), THEN ON TRACK 060.68. EXPECT RADAR VECTORS TO FINAL APPROACH COURSE.

PROCEDURAL DATA NOTES:

NOTE: RADAR REQUIRED

NOTE: RNAV 1

NOTE: DME/DME/IRU OR GPS REQUIRED

NOTE: TURBOJET AIRCRAFT ONLY

NOTE: RUIZE TRANSITION ASSIGNED BY ATC ONLY.

CROSS ROBUC AT 260 KIAS.

FIXES AND/OR HOLDING PATTERNS:

CHART BENNN, ISLAY, KLANE, MYNOT, WINNI AS STAND-ALONE FIXES.

CHART HOLDING AT BANKI: W, RT, 084.19 INBOUND, 10 NM LEGS.

CHART HOLDING AT PROVI: SW, RT, 055.00 INBOUND, 10 NM LEGS.

CHART HOLDING AT JOODY: W, LT, 076.22 INBOUND, 10 NM LEGS.

COMMUNICATIONS:

BOSTON APP CON, ATIS.

AIRPORTS SERVED:

GENERAL EDWARD LAWRENCE LOGAN INTL, BOSTON, MA

LOST COMMUNICATIONS PROCEDURE:

REMARKS:

DEPICT ISLAY, KLANE, AND WINNI STAND-ALONE FIXES OFFSET FROM RUNWAY TRANSITIONS TO AVOID AIRCREW MISUNDERSTANDING.

ADDITIONAL FLIGHT DATA:

DME/DME ASSESSMENT: SAT (RNP 2.0)

REFERENCE MAG VAR: KBOS 16W/1995.

CHART: "ASSIGNED BY ATC ONLY" AFTER RUIZE ENROUTE TRANSITION COMPUTER CODE.

ENSURE CORRESPONDING NOTE IS ALSO CHARTED ON PROCEDURE GRAPHIC ADJACENT TO RUIZE.

US DEPARTMENT of TRANSPORTATION - FEDERAL AVIATION ADMINISTRATION
STANDARD TERMINAL ARRIVAL (STAR)

Bearings, headings, courses, tracks and radials are magnetic. Elevations and altitudes are in feet. MSL. Altitudes are minimum altitudes unless otherwise indicated.
Distances are in nautical miles (NM). Graphic depiction attached.

Arrival Name	Number	STAR Computer Code	Superseded Number	Dated	Effective Date
ROBUC (RNAV)	TWO	ROBUC.ROBUC2	ONE	13 NOV 2014	
<u>FLIGHT INSPECTED BY:</u>					
Name		Organization	Date	Signature	
<u>DEVELOPED BY:</u>					
MICHAEL BANEY, SUPPORT MANAGER		BOSTON ARTCC			
Name		Organization	Date	Signature	
<u>APPROVED BY:</u>					
Name		Organization	Date	Signature	

CHANGES:

1. AT AWLIN: "AT OR ABOVE 17000" RESTRICTION ADDED
2. AT BANKI: 270K SPEED RESTRICTION DELETED.
3. AT ROBUC: "BETWEEN 12000 AND FL190 AT 260 KIAS" RESTRICTION ADDED.
4. CREATED A NEW RUNWAY TRANSITION FOR RWY 15R.
5. ADDED JAYNA WITH "AT 11000 AT 250 KIAS" RESTRICTION TO RWY 32/33/15R TRANSITIONS.
6. REMOVED KRANN FROM RWY32/33L TRANSITION.
7. REMOVED ANSLY FROM RWY 22L/22R TRANSITION.
8. AT SOFEE: "AT OR ABOVE 9000 AT 220 KIAS" RESTRICTION CHANGED TO "BETWEEN 9000 AND 10000 AT 220 KIAS".
9. AT ERNEI: "AT OR ABOVE 7000" RESTRICTION CHANGED TO "BETWEEN 7000 AND 8000."
10. AT KRANN: "BETWEEN 11000 AND 13000 AT 270 KIAS" RESTRICTION CHANGED TO "BETWEED 12000 AND 11000 AT 250 KIAS."
11. AT ANSLY: "AT OR ABOVE 8000" RESTRICTION CHANGED TO "AT 8000 AT 240 KIAS."
12. AT BEREI: "AT 8000 AT 220 KIAS" RESTRICTION CHANGED TO "BETWEEN 6000 AND 7000 AT 220 KIAS."
13. AT CRADL: "BETWEEN 8000 AND 10000" RESTRICTION ADDED.
14. GIGTY WAYPOINT NAME CHANGED TO RUIZE.
15. GIGTY ENROUTE TRANSITION NAME CHANGED TO RUIZE AND DESIGNATED ATC ASSIGNED ONLY.
16. CHYAN STAND-ALONE WAYPOINT NAME CHANGED TO ISLAY.
17. MAANO STAND-ALONE WAYPOINT DELETED.
18. AT MERIT: "At FL230" RESTRICTION REMOVED (RESTRICTION WAS ON DOCUMENTS FOR ROBUC1 BUT WAS NOT CHARTED, REASON UNKNOWN).
19. ADDED NOTE: "RUIZE TRANSITION ASSIGNED BY ATC ONLY."
20. ADDED CHART INSTRUCTIONS TO ADD "ASSIGNED BY ATC ONLY" AFTER RUIZE ENROUTE TRANSITION COMPUTER CODE.
21. MOCAs ADDED.

REASONS:

- 1-13. IMPROVE PROCEDURE EFFICIENCY.
- 14-16. REQUESTED BY ATC.
17. REDUCE CHART CLUTTER.

STANDARD TERMINAL ARRIVAL (STAR)

Bearings, headings, courses, tracks and radials are magnetic. Elevations and altitudes are in feet. MSL. Altitudes are minimum altitudes unless otherwise indicated.

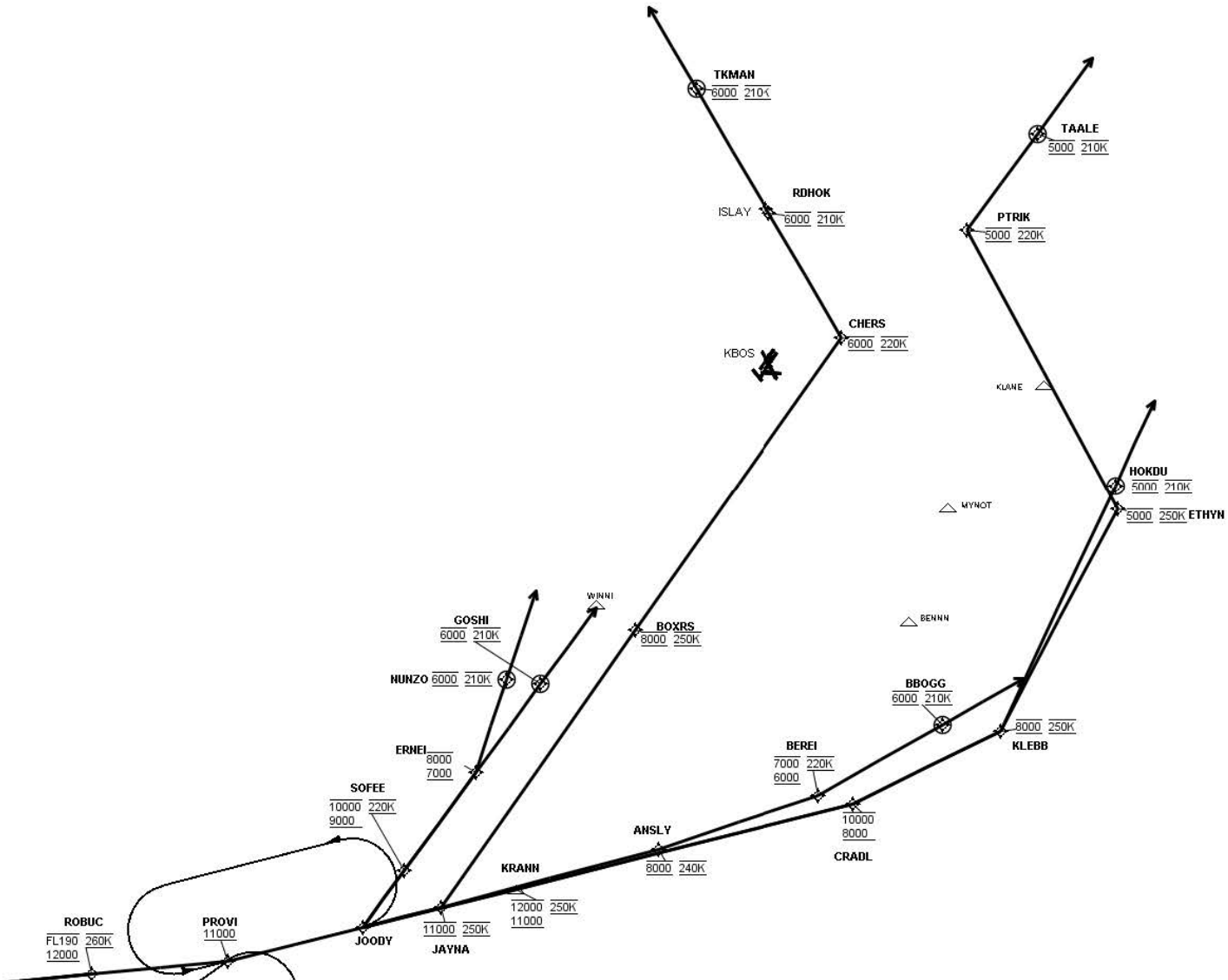
Distances are in nautical miles (NM). Graphic depiction attached.

Arrival Name	Number	STAR Computer Code	Superseded Number	Dated	Effective Date
ROBUC (RNAV)	TWO	ROBUC.ROBUC2	ONE	13 NOV 2014	
18. EDITORIAL.					
19-20. CLARITY.					
21. REQUIRED BY 7100.9E.					

US DEPARTMENT of TRANSPORTATION - FEDERAL AVIATION ADMINISTRATION
STANDARD TERMINAL ARRIVAL (STAR)

Bearings, headings, courses, tracks and radials are magnetic. Elevations and altitudes are in feet. MSL. Altitudes are minimum altitudes unless otherwise indicated.
 Distances are in nautical miles (NM). Graphic depiction attached.

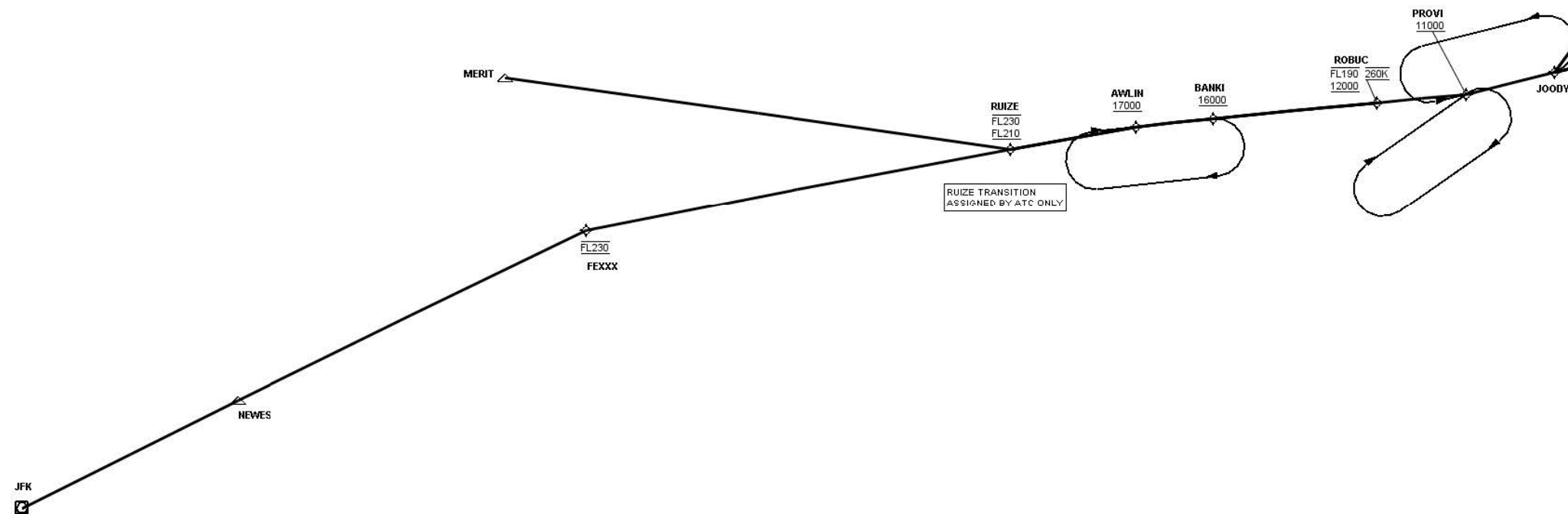
Arrival Name	Number	STAR Computer Code	Superseded Number	Dated	Effective Date
ROBUC (RNAV)	TWO	ROBUC.ROBUC2	ONE	13 NOV 2014	
Graphic Depiction 1					



US DEPARTMENT of TRANSPORTATION - FEDERAL AVIATION ADMINISTRATION
STANDARD TERMINAL ARRIVAL (STAR)

Bearings, headings, courses, tracks and radials are magnetic. Elevations and altitudes are in feet. MSL. Altitudes are minimum altitudes unless otherwise indicated.
 Distances are in nautical miles (NM). Graphic depiction attached.

Arrival Name	Number	STAR Computer Code	Superseded Number	Dated	Effective Date
ROBUC (RNAV)	TWO	ROBUC.ROBUC2	ONE	13 NOV 2014	
Graphic Depiction 2					



STAR (DATA RECORD)

Arrival Name ROBUC (RNAV)		Number TWO		STAR Computer Code ROBUC.ROBUC2		Superseded Number ONE		Dated 13 NOV 2014	Effective Date
FIX/NAVAID	LAT/LONG	C	FO/FB	LEG TYPE	TC	DIST (NM)	ALTITUDE	SPEED	REMARKS
En Route Transition									
JFK VOR/DME	403758.40N / 0734617.00W	Y		IF					JFK.ROBUC2
NEWES	405120.21N / 0732641.77W	Y	FB	TF	048.00	20.00			
FEXXX	411239.54N / 0725459.76W	Y	FB	TF	048.21	32.09	AT FL230		
RUIZE	412845.63N / 0721233.94W	Y	FB	TF	063.04	35.78	FL210BFL230		
AWLIN	413322.48N / 0715956.97W	Y	FB	TF	063.98	10.54	AT/ABOVE 17000		
BANKI	413544.39N / 0715203.63W	Y	FB	TF	068.19	06.38	AT/ABOVE 16000		
ROBUC	414044.11N / 0713506.42W	Y	FB	TF	068.46	13.66	12000BFL190	AT 260K	
En Route Transition									
MERIT	412255.02N / 0730814.75W	Y		IF					MERIT.ROBUC2
RUIZE	412845.63N / 0721233.94W	Y	FB	TF	081.75	42.29	FL210BFL230		
AWLIN	413322.48N / 0715956.97W	Y	FB	TF	063.98	10.54	AT/ABOVE 17000		
BANKI	413544.39N / 0715203.63W	Y	FB	TF	068.19	06.38	AT/ABOVE 16000		
ROBUC	414044.11N / 0713506.42W	Y	FB	TF	068.46	13.66	12000BFL190	AT 260K	
En Route Transition									
RUIZE	412845.63N / 0721233.94W	Y		IF			FL210BFL230		RUIZE.ROBUC2
AWLIN	413322.48N / 0715956.97W	Y	FB	TF	063.98	10.54	AT/ABOVE 17000		
BANKI	413544.39N / 0715203.63W	Y	FB	TF	068.19	06.38	AT/ABOVE 16000		
ROBUC	414044.11N / 0713506.42W	Y	FB	TF	068.46	13.66	12000BFL190	AT 260K	
Common Route									
ROBUC	414044.11N / 0713506.42W	Y		IF			12000BFL190	AT 260K	ROBUC.ROBUC2
PROVI	414325.46N / 0712554.17W	Y	FB	TF	068.65	07.40	AT/ABOVE 11000		
JOODY	414707.37N / 0711715.23W	Y	FB	TF	060.22	07.45			
Runway Transition									
JOODY	414707.37N / 0711715.23W	Y		IF					
SOFEE	415035.42N / 0711532.13W	Y	FB	TF	020.33	03.70	9000B10000	AT 220K	

QUALITY

17

CHANGED

QUALITY
17
CHECKED

STAR (DATA RECORD)

Arrival Name ROBUC (RNAV)		Number TWO		STAR Computer Code ROBUC.ROBUC2		Superseded Number ONE		Dated 13 NOV 2014	Effective Date
FIX/NAVAID	LAT/LONG	C	FO/FB	LEG TYPE	TC	DIST (NM)	ALTITUDE	SPEED	REMARKS
ERNEI	415641.29N / 0711230.68W	Y	FB	TF	020.32	06.50	7000B8000		
NUNZO	420151.20N / 0711213.36W	Y	FO	TF	002.39	05.17	AT 6000	AT 210K	
KBOS:RWY 04L				FM	002.39				RECOMMENDED NAVAID: BOS VOR/DME
Runway Transition									
JOODY	414707.37N / 0711715.23W	Y		IF					
SOFEE	415035.42N / 0711532.13W	Y	FB	TF	020.33	03.70	9000B10000	AT 220K	
ERNEI	415641.29N / 0711230.68W	Y	FB	TF	020.32	06.50	7000B8000		
GOSHI	420211.09N / 0710947.14W	Y	FO	TF	020.29	05.86	AT 6000	AT 210K	
KBOS:RWY 04R				FM	020.29				RECOMMENDED NAVAID: BOS VOR/DME
Runway Transition									
JOODY	414707.37N / 0711715.23W	Y		IF					
JAYNA	414915.90N / 0711213.60W	Y	FB	TF	060.31	04.33	AT 11000	AT 250K	
BOXRS	420616.24N / 0710417.45W	Y	FB	TF	019.16	18.00	AT 8000	AT 250K	
CHERS	422418.51N / 0705547.58W	Y	FB	TF	019.24	19.10	AT 6000	AT 220K	
RDHOK	422936.10N / 0710320.94W	Y	FB	TF	313.45	07.70	AT 6000	AT 210K	
TKMAN	423454.97N / 0711051.19W	Y	FO	TF	313.80	07.68	AT 6000	AT 210K	
KBOS:RWY 15R				FM	313.80				RECOMMENDED NAVAID: BOS VOR/DME
Runway Transition									
JOODY	414707.37N / 0711715.23W	Y		IF					
KRANN	415118.69N / 0710724.46W	Y	FB	TF	060.32	08.47	11000B12000	AT 250K	
CRADL	420036.88N / 0704547.55W	Y	FB	TF	059.92	18.62	8000B10000		
KLEBB	420630.28N / 0703658.08W	Y	FB	TF	048.10	08.82	AT 8000	AT 250K	
ETHYN	421933.13N / 0703319.59W	Y	FB	TF	011.70	13.32	AT 5000	AT 250K	
PTRIK	423138.24N / 0704914.28W	Y	FB	TF	315.80	16.88	AT 5000	AT 220K	
TAALE	423734.55N / 0704618.74W	Y	FO	TF	019.99	06.32	AT 5000	AT 210K	
KBOS:RWY 22B				FM	019.99				RECOMMENDED NAVAID: BOS VOR/DME

QUALITY
17
CHECKED

STAR (DATA RECORD)

Arrival Name	Number	STAR Computer Code	Superseded Number	Dated	Effective Date
ROBUC (RNAV)	TWO	ROBUC.ROBUC2	ONE	13 NOV 2014	

FIX/NAVAID	LAT/LONG	C	FO/FB	LEG TYPE	TC	DIST (NM)	ALTITUDE	SPEED	REMARKS
Runway Transition									
JOODY	414707.37N / 0711715.23W	Y		IF					
KRANN	415118.69N / 0710724.46W	Y	FB	TF	060.32	08.47	11000B12000	AT 250K	
CRADL	420036.88N / 0704547.55W	Y	FB	TF	059.92	18.62	8000B10000		
KLEBB	420630.28N / 0703658.08W	Y	FB	TF	048.10	08.82	AT 8000	AT 250K	
HOKDU	422043.93N / 0703355.81W	Y	FO	TF	009.00	14.40	AT 5000	AT 210K	
KBOS:RWY 27				FM	009.00				RECOMMENDED NAVAID: BOS VOR/DME

Runway Transition									
JOODY	414707.37N / 0711715.23W	Y		IF					
JAYNA	414915.90N / 0711213.60W	Y	FB	TF	060.31	04.33	AT 11000	AT 250K	
ANSLY	415525.95N / 0705818.81W	Y	FB	TF	059.25	12.08	AT 8000	AT 240K	
BEREI	420032.09N / 0704820.74W	Y	FB	TF	055.50	09.02	6000B7000	AT 220K	
BBOGG	420556.98N / 0704109.06W	Y	FO	TF	044.68	07.62	AT 6000	AT 210K	
KBOS:RWY 32, 33L				FM	044.68				RECOMMENDED NAVAID: BOS VOR/DME

