

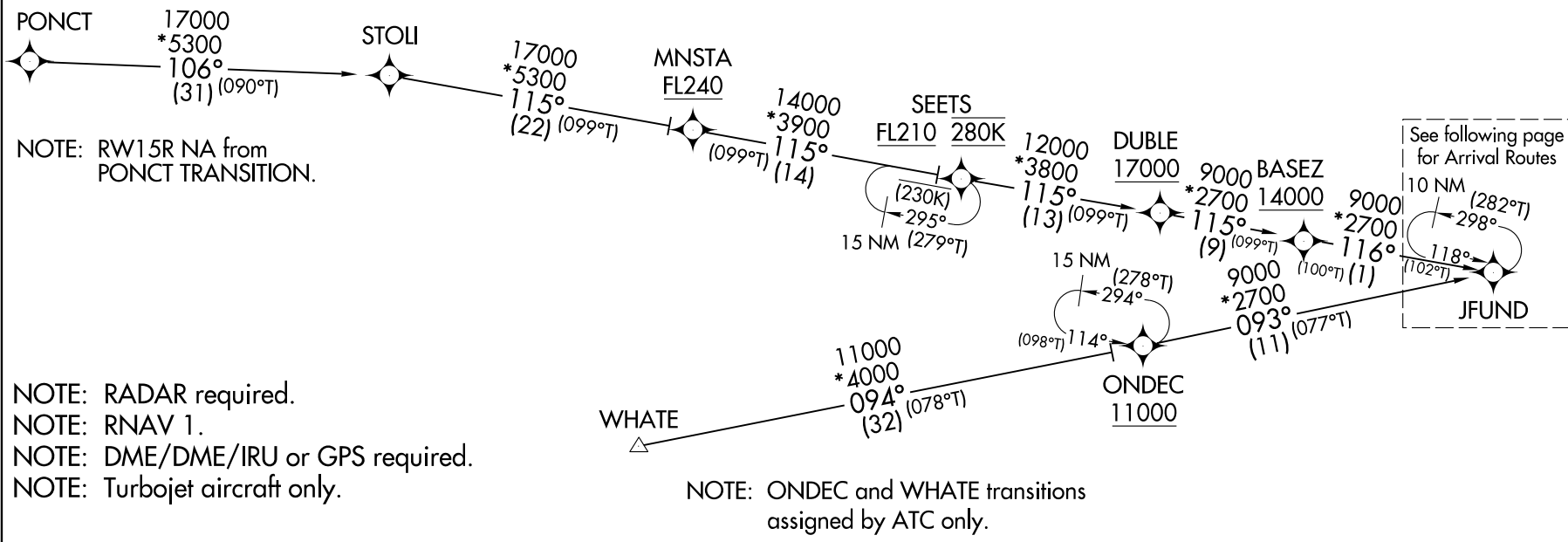
<b>Flight Procedure Tracking Form</b>		<b>Action:</b> NEW	<b>Task Type:</b> STAR	<b>Date Open:</b> 09/03/2015	<b>Task #:</b> 2014120815122501002	<b>Request #:</b> 20141208151225
<b>Procedure:</b> STAR JFUND (RNAV) ONE BOSTON MA KBOS			<b>Airport ID:</b> KBOS	<b>Airport:</b> GENERAL EDWARD LAWRENCE LOGAN INTL		<b>Reimbursable #:</b> NO
<b>City:</b> BOSTON	<b>ST:</b> MA	<b>GPS #:</b>	<b>Estimated Chart Date:</b> 05/26/2016		<b>FICO #:</b> 1160976	
<b>Fac ID:</b> N/A		<b>Fac. Type:</b>		<b>Specialist:</b> JEFF ANDERSON		
<b>Procedure Review</b>						
	<b>Rec'd</b>	<b>Rel'd</b>	<b>Full Name</b>	<b>Comments</b>		
<b>Lead:</b>	12/01/2015	01/20/2016	JULIE MORGAN			
<b>QA:</b>						
<b>Liaison:</b>		01/22/2016	MARY MCDONALD			
<b>Procedure Comments:</b>			<b>ENROUTE Remark Type:</b> INFORMATION			
<p>CONTACT: JULIE MORGAN, AJV-352 LEAD, 405.954-8586</p> <p>01/29/16: THIS IS AN UPDATED COPY OF THE FORMS DEVELOPED ON 01/05/2016:</p> <p>1. ON THE 7100-3; CORRECTED ALL INSTANCES OF THE COORDINATE FOR SPYSD from 422704.64N / 0710137.08W to 422658.45N / 0710137.25W.</p> <p>2. ON THE 7100-3; CORRECTED TC/DIST DATA FOR LEGS: HRRIS-SPYSD from 095.95/05.76 to 096.97/05.77, SPYSD-GRIFI from 153.91/09.32 to 153.62/09.23, SPYSD-REVER from 101.99/02.97 to 100.03/02.96, SPYSD-BRODI from 129.50/06.06 to 128.73/06.00.</p> <p>3. ON THE 7100-4; CORRECTED TRACK/DIST DATA FOR LEGS: HRRIS-SPYSD from 111.95/05.76 to 112.97/05.77, SPYSD-GRIFI from 169.91/09.32 to 169.62/09.23, SPYSD-REVER from 117.99/02.97 to 116.03/02.96, SPYSD-BRODI from 145.50/06.06 to 144.73/06.00.</p>						

<b>Flight Procedure Tracking Form</b>		<b>Action:</b> FLIGHT CHECK	<b>Task Type:</b> STAR	<b>Date Open:</b> 09/03/2015	<b>Task #:</b> 2014120815122501002	<b>Request #:</b> 20141208151225
<b>Procedure:</b> STAR JFUND (RNAV) ONE BOSTON MA KBOS			<b>Airport ID:</b> KBOS	<b>Airport:</b> GENERAL EDWARD LAWRENCE LOGAN INTL		<b>Reimbursable #:</b> NO
<b>City:</b> BOSTON	<b>ST:</b> MA	<b>GPS #:</b>		<b>Estimated Chart Date:</b> 05/26/2016		<b>FICO #:</b>
<b>Fac ID:</b> N/A		<b>Fac. Type:</b>			<b>Specialist:</b> Jeff Anderson	
<b>Procedure Review</b>						
	<b>Rec'd</b>	<b>Rel'd</b>	<b>Full Name</b>		<b>Comments</b>	
<b>Lead:</b>	12/01/2015					
<b>QA:</b>						
<b>Liaison:</b>						
<b>Procedure Comments:</b>			ENROUTE	<b>Remark Type:</b> INFORMATION		
CONTACT: JULIE MORGAN, AJV-352 LEAD, 405.954-8586						
<div>QUALITY 28 CHECKED</div>						

<b>FIPC DME/DME FORM</b>							
<b>PROCEDURE:</b> STAR,JFUND (RNAV),ONE,BOSTON,MA,KBOS,!			<b>AIRPORT NAME:</b> GENERAL EDWARD LAWRENCE		<b>AIRPORT ID:</b> KBOS	<b>SPECIAL CONTROL NO:</b> YG-01-241-16	
<b>FAC ID:</b> JFUND1		<b>CITY:</b> BOSTON			<b>ST:</b> MA	<b>ORIG CHART DATE:</b> 05/26/2016	
<b>DFL TYPE:</b> PROC/D	<b>THIRD PARTY:</b> <input type="checkbox"/> YES	<b>EST. TIME ON SITE:</b> 1.0	<b>REIMB. NUMBER:</b>		<b>PTS TASK ID:</b> 2014120815122501002		
<b>PREFLIGHT NOTES</b>							
<b>REVIEWER:</b>					<b>DATE:</b>		
<b>COMMENTS:</b>					<b>CHECK ONE:</b>		
					<input type="checkbox"/> FLT CK REQ <input type="checkbox"/> NFCR <input type="checkbox"/> REJECT		
							<b>YES</b>
					<b>CPV COMPLETE?</b>		<b>X</b>
<b>PROCEDURE RESULTS</b>							
<b>INSPECTION DATE:</b> 01/28/2016		<b>CREW #:</b> VN888	<b>N #:</b>	<b>INSTRUMENT PROCEDURE STATUS:</b> <input type="checkbox"/> SAT <input type="checkbox"/> SAT W/CHANGES <input checked="" type="checkbox"/> UNSAT		<b>ARINC CODING:</b> <input type="checkbox"/> SAT <input type="checkbox"/> SAT/GOLD <input type="checkbox"/> UNSAT	
<b>FLIGHT INSPECTOR SIGNATURE:</b> elizabeth whaley @ 01/28/2016 14:57			<b>PRINTED NAME:</b> AVN, CREWMEMBER 1			<b>NOTAM INITIATED?</b> <input type="checkbox"/> YES <input checked="" type="checkbox"/> NO	
<b>FLIGHT INSPECTOR REMARKS:</b> SPYSD fix Lat/Longs are incorrect. The NACO file coords match the 8260-2. The 7100-3 coords are different. This difference causes True Course and distance differences between SPYSD-GRIFI, SPYSD-REVER, and SPYSD-BRODI.							
<b>DME/DME STATUS:</b> <input type="checkbox"/> SAT <input type="checkbox"/> UNSAT		<b>SPECIALIST SIGNATURE:</b>			<b>PRINTED NAME:</b>		
<b>SPECIALIST REMARKS:</b>							
<b>IN-FLIGHT OBSTACLE REPORT</b>							
<b>OBSTRUCTION ID #:</b>	<b>COORDINATES OR LOCATION:</b>		<b>GNSS ALTITUDE (MSL):</b>		<b>BAROMETRIC ALTITUDE (MSL):</b>		<b>HEIGHT ABOVE GROUND LEVEL:</b>

PROTOTYPE - NOT FOR NAVIGATION

ATIS  
135.0  
BOSTON APP CON  
118.25

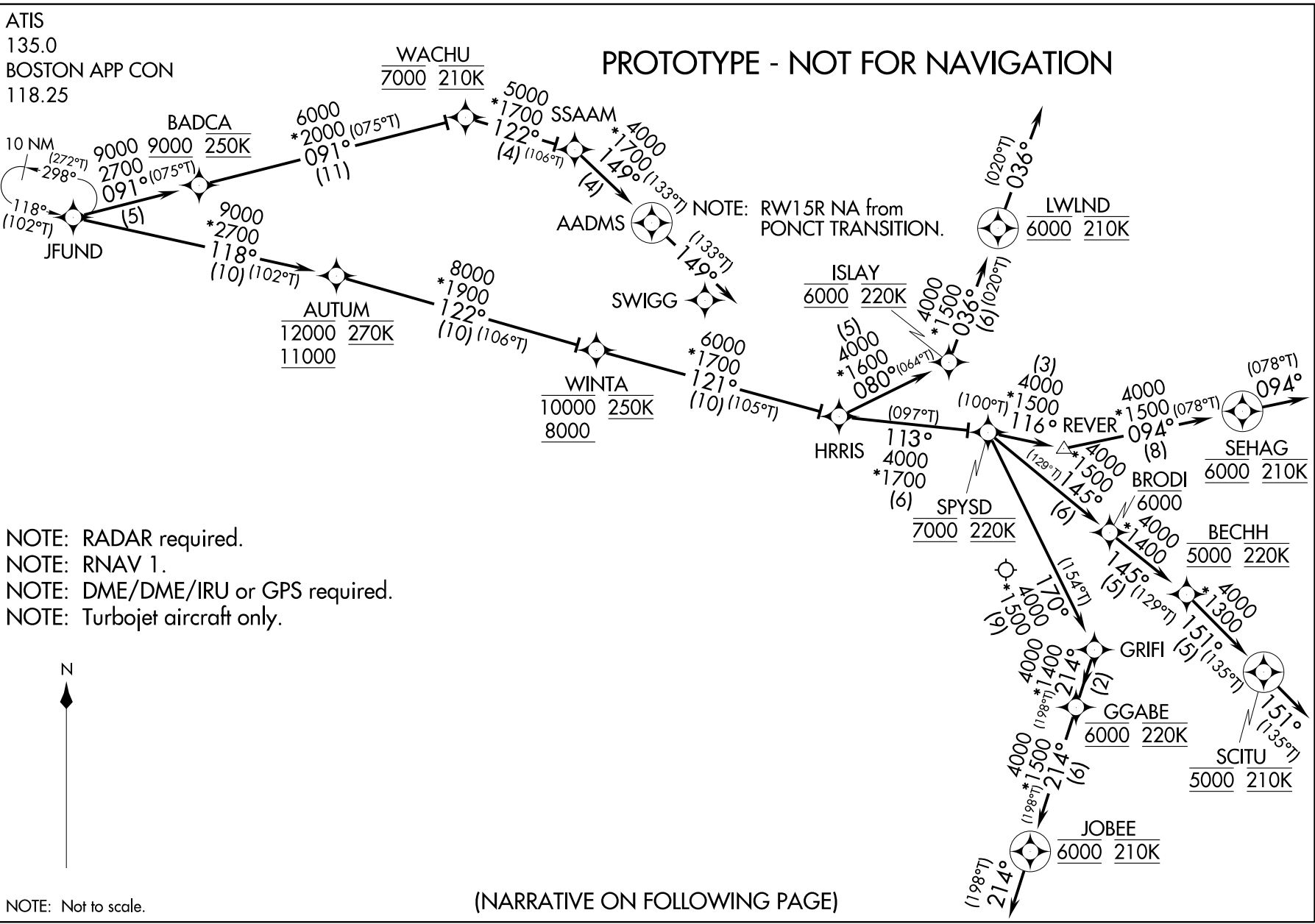


ONDEC TRANSITION (ONDEC.JFUND1): (Assigned by ATC only).  
PONCT TRANSITION (PONCT.JFUND1)  
WHATE TRANSITION (WHATE.JFUND1): (Assigned by ATC only).

(CONTINUED ON FOLLOWING PAGE)

NOTE: Not to scale.





AUTOMATED AL-58 JFUND ONE ARRIVAL (RNAV) (CONT.)

NE-1  
12/31/2015  
COMPILER: LS  
REVIEWER:  
DBL, CHKR:  
EFF: FIG

(JFUND.JFUND1) FIG

## JFUND ONE ARRIVAL (RNAV)

GENERAL EDWARD LAWRENCE LOGAN INTL (BOS)  
ST-58 BOSTON, MASSACHUSETTS

### ARRIVAL ROUTE DESCRIPTION

LANDING RUNWAY 4R/L: From JFUND on track 118° to cross AUTUM between 11000 and 12000 and at 270K, then on track 122° to cross WINTA between 8000 and 10000 and at 250K, then on track 121° TO HRRIS, then on track 113° to cross SPYSD at 7000 and at 220K, then on track 170° TO GRIFI, then on track 214° to cross GGABE at 6000 and at 220K, then on track 214° to cross JOBEE at 6000 and at 210K, then on track 214°. Expect RADAR vectors to final approach course.

LANDING RUNWAY 15R: From JFUND on track 091° to cross BADCA at or above 9000 and at 250K, then on track 091° to cross WACHU at 7000 and at 210K, then on track 122° to SSAAM, then on track 149° TO AADMS, then on track 149°. Expect RADAR vectors to final approach course.

LANDING RWY 22R/L: From JFUND on track 118° to cross AUTUM between 11000 and 12000 and at 270K, then on track 122° to cross WINTA between 8000 and 10000 and at 250K, then on track 121° TO HRRIS, then on track 080° to cross ISLAY at 6000 and at 220K, then on track 036° to cross LWLND at 6000 and at 210K, then on track 036°. Expect RADAR vectors to final approach course.

LANDING RUNWAY 27: From JFUND on track 118° to cross AUTUM between 11000 and 12000 and at 270K, then on track 122° to cross WINTA between 8000 and 10000 and at 250K, then on track 121° TO HRRIS, then on track 113° to cross SPYSD at 7000 and at 220K, then on track 116° TO REVER, then on track 094° to cross SEHAG at 6000 and at 210K, then on track 094°. Expect RADAR vectors to final approach course.

LANDING RUNWAYS 32, 33L: From JFUND on track 118° to cross AUTUM between 11000 and 12000 and at 270K, then on track 122° to cross WINTA between 8000 and 10000 and at 250K, then on track 121° TO HRRIS, then on track 113° to cross SPYSD at 7000 and at 220K, then on track 145° to cross BRODI at or below 6000, then on track 145° to cross BECHH at 5000 and at 220K, then on track 151° to cross SCITU at 5000 and at 210K, then on track 151°. Expect RADAR vectors to final approach course.

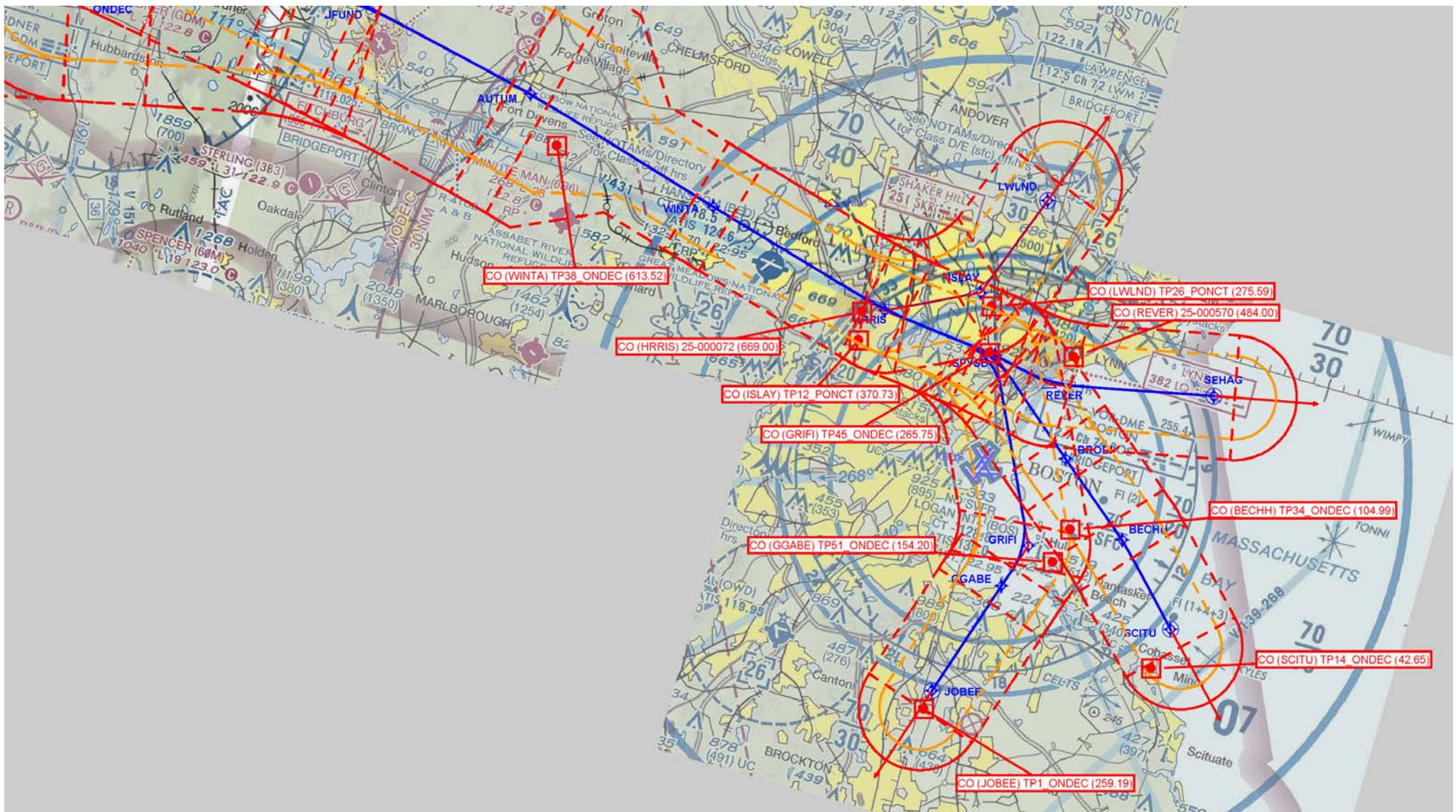
PROTOTYPE - NOT FOR NAVIGATION

AUTOMATED AL-58 JFUND ONE ARRIVAL (RNAV) (CONT. 1)

NE-1  
12/31/2015  
COMPILER: LS  
REVIEWER:  
DBL. CHKR:  
EFF: FIG

JFUND ONE ARRIVAL (RNAV)  
(JFUND.JFUND1) FIG

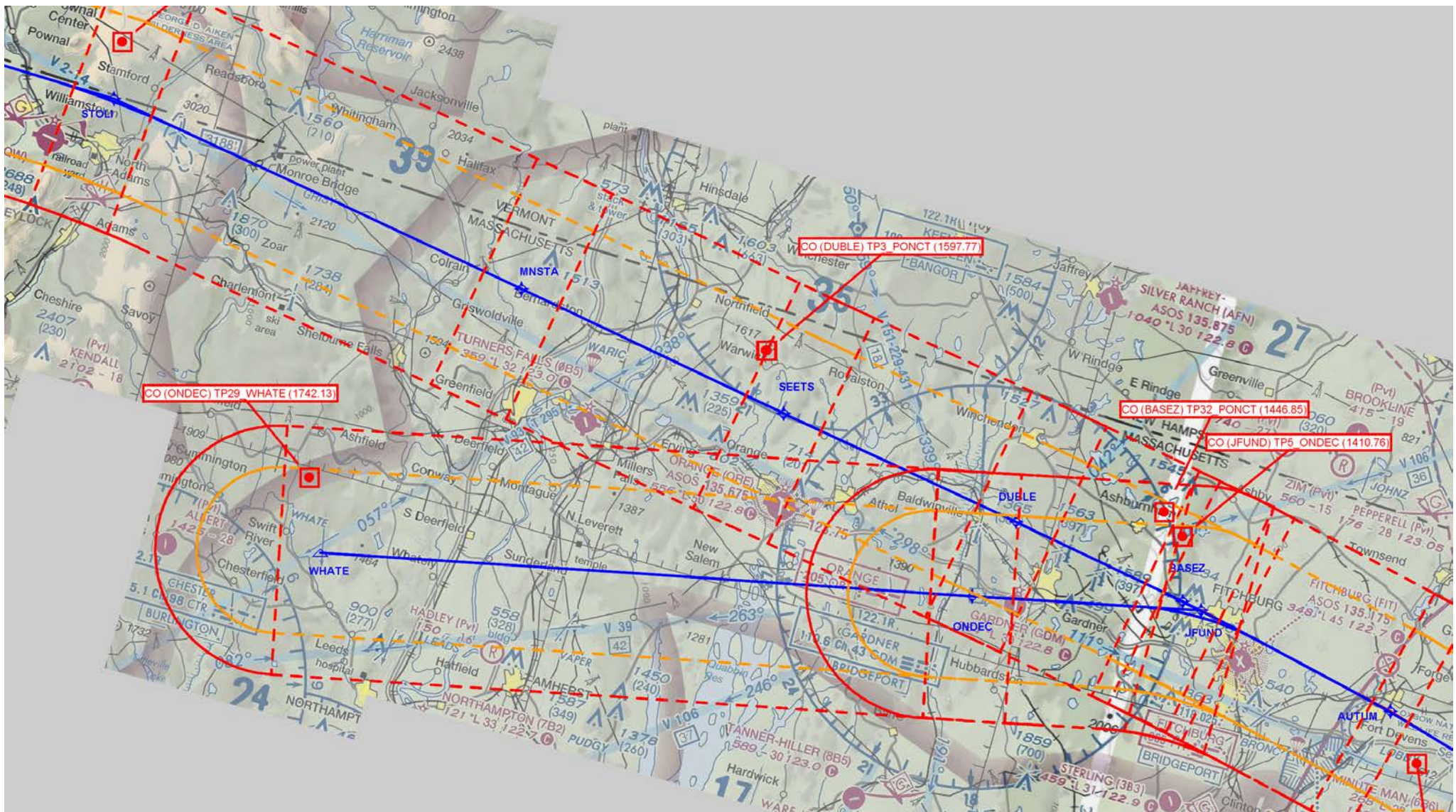
BOSTON, MASSACHUSETTS  
GENERAL EDWARD LAWRENCE LOGAN INTL (BOS)



1 of 5

JFUND (RNAV)

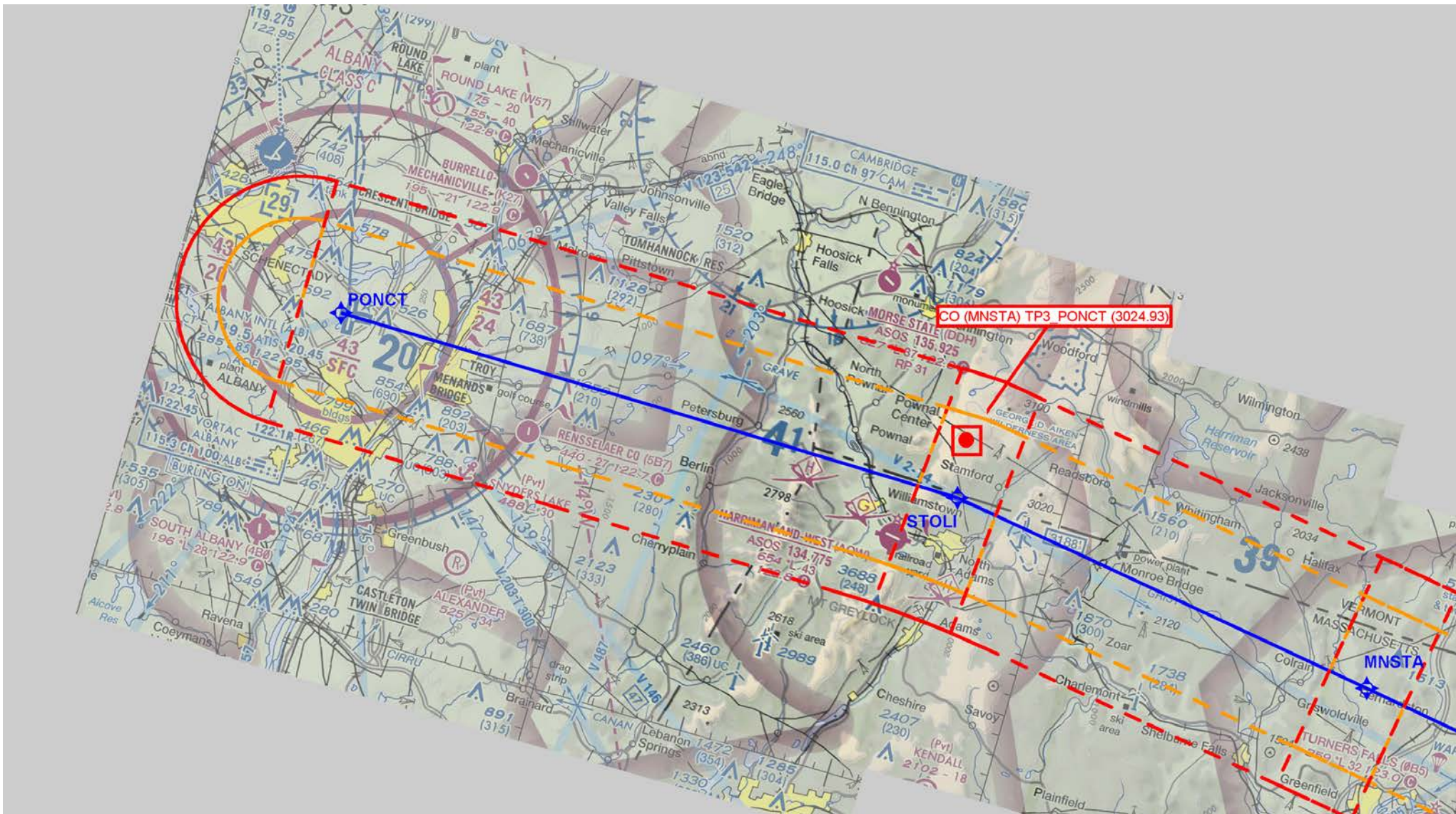




2 of 5

JFUND (RNAV)

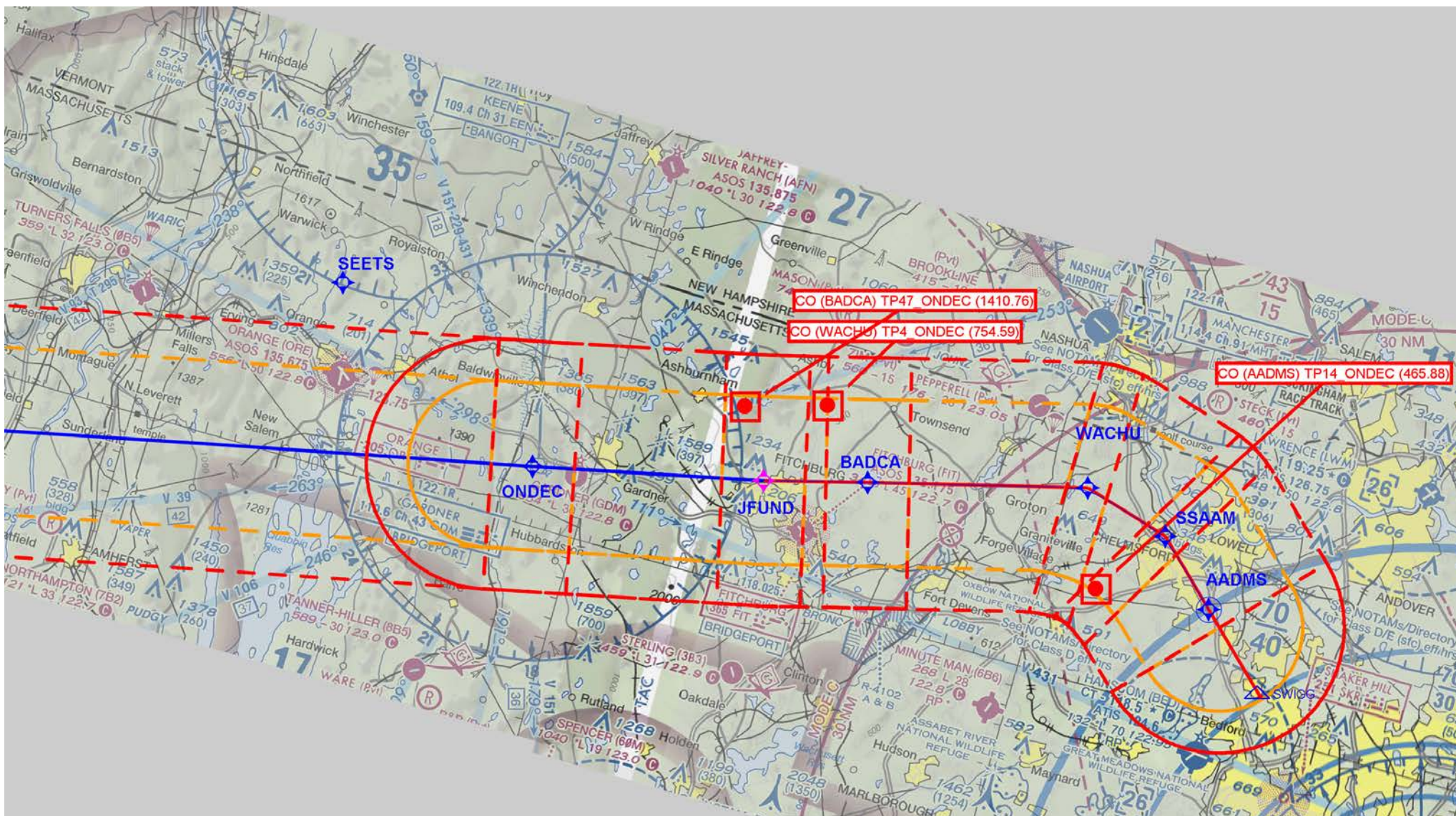




3 of 5

JFUND (RNAV)

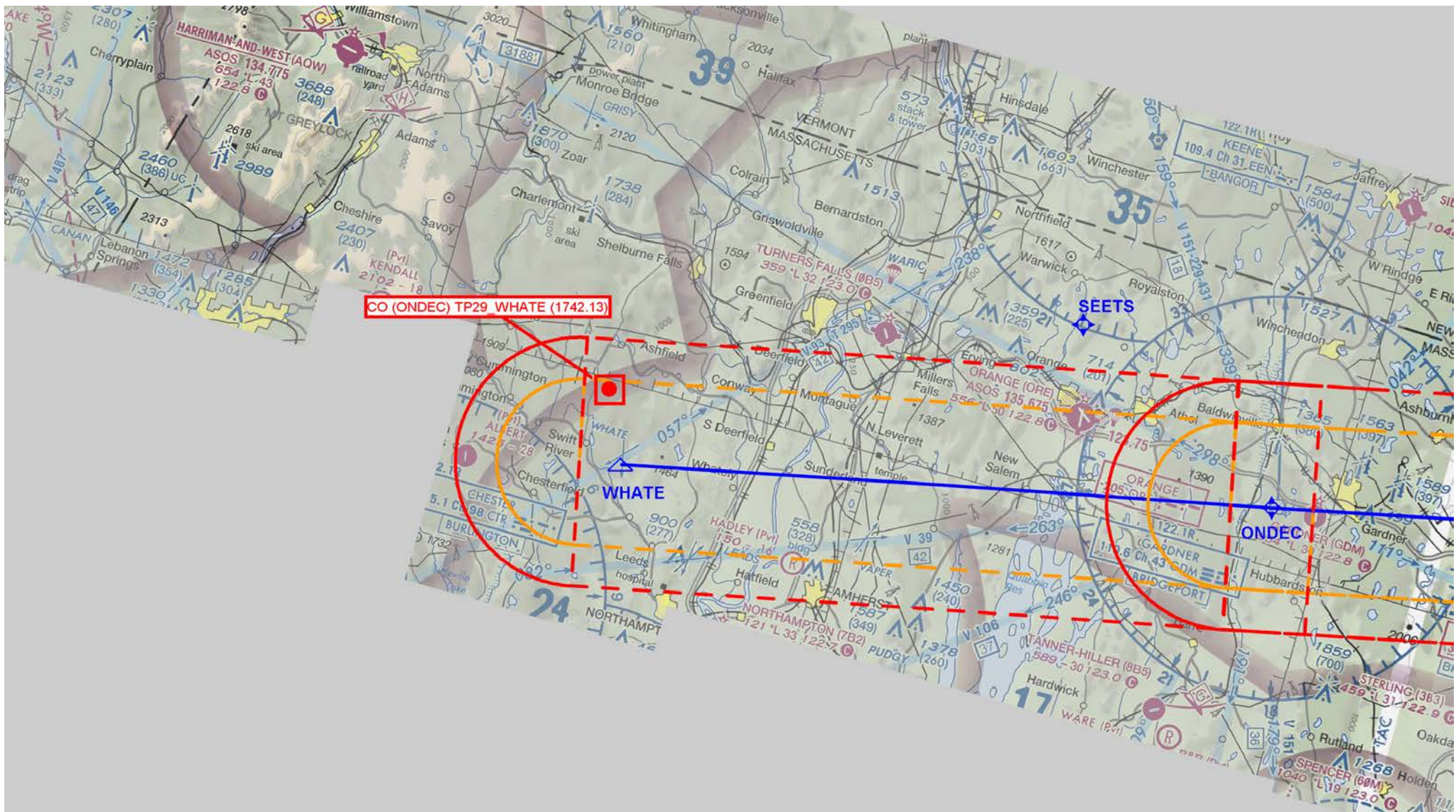




4 of 5

JFUND (RNAV)





5 of 5

JFUND (RNAV)