

US DEPARTMENT of TRANSPORTATION - FEDERAL AVIATION ADMINISTRATION

STANDARD TERMINAL ARRIVAL (STAR)

Bearings, headings, courses, tracks and radials are magnetic. Elevations and altitudes are in feet. MSL. Altitudes are minimum altitudes unless otherwise indicated.

Distances are in nautical miles (NM). Graphic depiction attached.

Arrival Name JFUND (RNAV)	Number ONE	STAR Computer Code JFUND.JFUND1	Superseded Number NONE	Dated	Effective Date				
TRANSITION ROUTES:									
Transition Name	Transition Computer Codes	From FIX/NAVAID	To FIX/NAVAID	Mag Course	Distance	MEA	MOCA	MAA	Crossing Altitudes / Fixes
ONDEC	ONDEC.JFUND1	ONDEC	ONDEC						AT/ABOVE 11000
			JFUND	093.49	11.11	9000	2700		
PONCT	PONCT.JFUND1	PONCT	PONCT						
			STOLI	106.45	30.90	17000	5300		
			MNSTA	114.83	21.69	17000	5300		AT/ABOVE FL240
			SEETS	115.29	14.00	14000	3900		AT/ABOVE FL210
			DUBLE	114.89	12.38	12000	3800		AT/ABOVE 17000
			BASEZ	115.47	08.93	9000	2700		AT/ABOVE 14000
			JFUND	115.60	01.00	9000	2700		
WHATE	WHATE.JFUND1	WHATE	WHATE						
			ONDEC	093.66	31.59	11000	4000		AT/ABOVE 11000
			JFUND	093.49	11.11	9000	2700		

ARRIVAL ROUTE DESCRIPTION:

LANDING RWY 4R/L: FROM JFUND ON TRACK 117.99/10.37 TO CROSS AUTUM BETWEEN 11000 AND 12000 AND AT 270 KIAS (MEA 9000/MOCA 2700), THEN ON TRACK 121.60/10.40 TO CROSS WINTA BETWEEN 8000 AND 10000 AND AT 250 KIAS (MEA 8000/MOCA 1900), THEN ON TRACK 121.06/9.68 TO HRRIS (MEA 6000/MOCA 1700), THEN ON TRACK 112.97/5.77 TO CROSS SPYSD AT 7000 AND AT 220 KIAS (MEA 4000/MOCA 1700), THEN ON TRACK 169.62/9.23 TO GRIFI (MEA 4000/MOCA 1500), THEN ON TRACK 213.83/2.33 TO CROSS GGABE AT 6000 AND AT 220 KIAS (MEA 4000/MOCA 1400), THEN ON TRACK 213.68/6.07 TO CROSS JOBEE AT 6000 AND AT 210 KIAS (MEA 4000/MOCA 1500), THEN ON TRACK 213.68. EXPECT RADAR VECTORS TO FINAL APPROACH COURSE.

LANDING RWY 15R: FROM JFUND ON TRACK 091.17/5.00 TO CROSS BADCA AT OR ABOVE 9000 AND AT 250 KIAS (MEA 9000/MOCA 2700), THEN ON TRACK 091.25/10.57 TO CROSS WACHU AT 7000 AND AT 210 KIAS (MEA 6000/MOCA 2000), THEN ON TRACK 122.13/4.38 TO SSAAM (MEA 5000/MOCA 1700), THEN ON TRACK 149.23/4.08 TO AADMS (MEA 4000/MOCA 1700), THEN ON TRACK 149.23. EXPECT RADAR VECTORS TO FINAL APPROACH COURSE.

LANDING RWY 22R/L: FROM JFUND ON TRACK 117.99/10.37 TO CROSS AUTUM BETWEEN 11000 AND 12000 AND AT 270 KIAS (MEA 9000/MOCA 2700), THEN ON TRACK 121.60/10.40 TO CROSS WINTA BETWEEN 8000 AND 10000 AND AT 250 KIAS (MEA 8000/MOCA 1900), THEN ON TRACK 121.06/9.68 TO HRRIS (MEA 6000/MOCA 1700), THEN ON TRACK 079.61/4.71 TO CROSS ISLAY AT 6000 AND AT 220 KIAS (MEA 4000/MOCA 1600), THEN ON TRACK 036.02/5.50 TO CROSS LWLND AT 6000 AND AT 210 KIAS (MEA 4000/MOCA 1500), THEN ON TRACK 036.02. EXPECT RADAR VECTORS TO FINAL APPROACH COURSE.

LANDING RWY 27: FROM JFUND ON TRACK 117.99/10.37 TO CROSS AUTUM BETWEEN 11000 AND 12000 AND AT 270 KIAS (MEA 9000/MOCA 2700), THEN ON TRACK 121.60/10.40 TO CROSS WINTA BETWEEN 8000 AND 10000 AND AT 250 KIAS (MEA 8000/MOCA 1900), THEN ON TRACK 121.06/9.68 TO HRRIS (MEA 6000/MOCA 1700), THEN ON TRACK 112.97/5.77 TO CROSS SPYSD AT 7000 AND AT 220 KIAS (MEA 4000/MOCA 1700), THEN ON TRACK 116.03/2.96 TO REVER (MEA 4000/MOCA 1500), THEN ON TRACK 094.23/8.00 TO CROSS SEHAG AT 6000 AND AT 210 KIAS (MEA 4000/MOCA 1500), THEN ON TRACK 094.23. EXPECT RADAR VECTORS TO FINAL APPROACH COURSE.

LANDING RWY 32, 33L: FROM JFUND ON TRACK 117.99/10.37 TO CROSS AUTUM BETWEEN 11000 AND 12000 AND AT 270 KIAS (MEA 9000/MOCA 2700), THEN ON TRACK 121.60/10.40 TO CROSS WINTA BETWEEN 8000 AND 10000 AND AT 250 KIAS (MEA 8000/MOCA 1900), THEN ON TRACK 121.06/9.68 TO HRRIS (MEA 6000/MOCA 1700), THEN ON TRACK 112.97/5.77 TO CROSS SPYSD AT 7000 AND AT 220 KIAS (MEA 4000/MOCA 1700), THEN ON TRACK 144.73/6.00 TO CROSS BRODI AT OR BELOW 6000 (MEA 4000/MOCA 1500), THEN ON TRACK 144.80/4.79 TO CROSS BECHH AT 5000 AND AT 220 KIAS (MEA 4000/MOCA 1400), THEN ON TRACK 151.36/4.90 TO CROSS SCITU AT 5000 AND AT 210 KIAS (MEA 4000/MOCA 1300), THEN ON TRACK 151.36. EXPECT RADAR VECTORS TO FINAL APPROACH COURSE.

PROCEDURAL DATA NOTES:

NOTE: RADAR REQUIRED

NOTE: RNAV 1

US DEPARTMENT of TRANSPORTATION - FEDERAL AVIATION ADMINISTRATION
STANDARD TERMINAL ARRIVAL (STAR)

Bearings, headings, courses, tracks and radials are magnetic. Elevations and altitudes are in feet. MSL. Altitudes are minimum altitudes unless otherwise indicated.
Distances are in nautical miles (NM). Graphic depiction attached.

Arrival Name	Number	STAR Computer Code	Superseded Number	Dated	Effective Date
JFUND (RNAV)	ONE	JFUND.JFUND1	NONE		
NOTE: DME/DME/IRU OR GPS REQUIRED					
NOTE: TURBOJET AIRCRAFT ONLY					
NOTE: ONDEC AND WHATE TRANSITION ASSIGNED BY ATC ONLY.					
NOTE: RW15R NA FROM PONCT TRANSITION.					
CHART: CROSS SEETS AT 280 KIAS.					
<u>FIXES AND/OR HOLDING PATTERNS:</u>					
CHART SWIGG AS A STAND-ALONE FIX.					
CHART HOLDING AT JFUND: NW, LT, 118.00 INBOUND, 10 NM LEGS.					
CHART HOLDING AT ONDEC: NW, LT, 114.00 INBOUND, 15 NM LEGS.					
CHART HOLDING AT SEETS: NW, RT, 115.00 INBOUND, 15 NM LEGS, AT OR BELOW 230 KIAS.					
<u>COMMUNICATIONS:</u>					
ATIS, APP CON					
<u>AIRPORTS SERVED:</u>					
GENERAL EDWARD LAWRENCE LOGAN INTL, BOSTON, MA					
<u>LOST COMMUNICATIONS PROCEDURE:</u>					
<u>REMARKS:</u>					
DEPICT SWIGG OFFSET FROM THE FM LEG AFTER AADMS TO EMPHASIZE THAT IT IS NOT ON THE TRANSITION.					
<u>ADDITIONAL FLIGHT DATA:</u>					
DME/DME ASSESSMENT: SAT (RNP 2.0)					
REFERENCE MAG VAR: KBOS 16W/1995.					
CHART: "ASSIGNED BY ATC ONLY" AFTER ONDEC AND WHATE ENROUTE TRANSITION COMPUTER CODES.					
ENSURE CORRESPONDING NOTE IS ALSO CHARTED ON PROCEDURE GRAPHIC ADJACENT TO TRANSITION DEPICTION.					
CHART: "RW15R NA FROM PONCT TRANSITION" ON PROCEDURE GRAPHIC NEAR BOTH AADMS WAYPOINT AND PONCT WAYPOINTS.					

US DEPARTMENT of TRANSPORTATION - FEDERAL AVIATION ADMINISTRATION
STANDARD TERMINAL ARRIVAL (STAR)

Bearings, headings, courses, tracks and radials are magnetic. Elevations and altitudes are in feet. MSL. Altitudes are minimum altitudes unless otherwise indicated.
Distances are in nautical miles (NM). Graphic depiction attached.

Arrival Name	Number	STAR Computer Code	Superseded Number	Dated	Effective Date
JFUND (RNAV)	ONE	JFUND.JFUND1	NONE		
<u>FLIGHT INSPECTED BY:</u>					
Name		Organization	Date	Signature	
<u>DEVELOPED BY:</u>					
MICHAEL BANEY, SUPPORT MANAGER		BOSTON ARTCC			
Name		Organization	Date	Signature	
<u>APPROVED BY:</u>					
MARLON J. ROBINSON, MANAGER		AJV-5410			
Name		Organization	Date	Signature	

CHANGES:

ORIGINAL

REASONS:

REQUESTED BY ATC.

01/29/16: THIS IS AN UPDATED COPY OF THE FORMS DEVELOPED ON 01/05/2016:

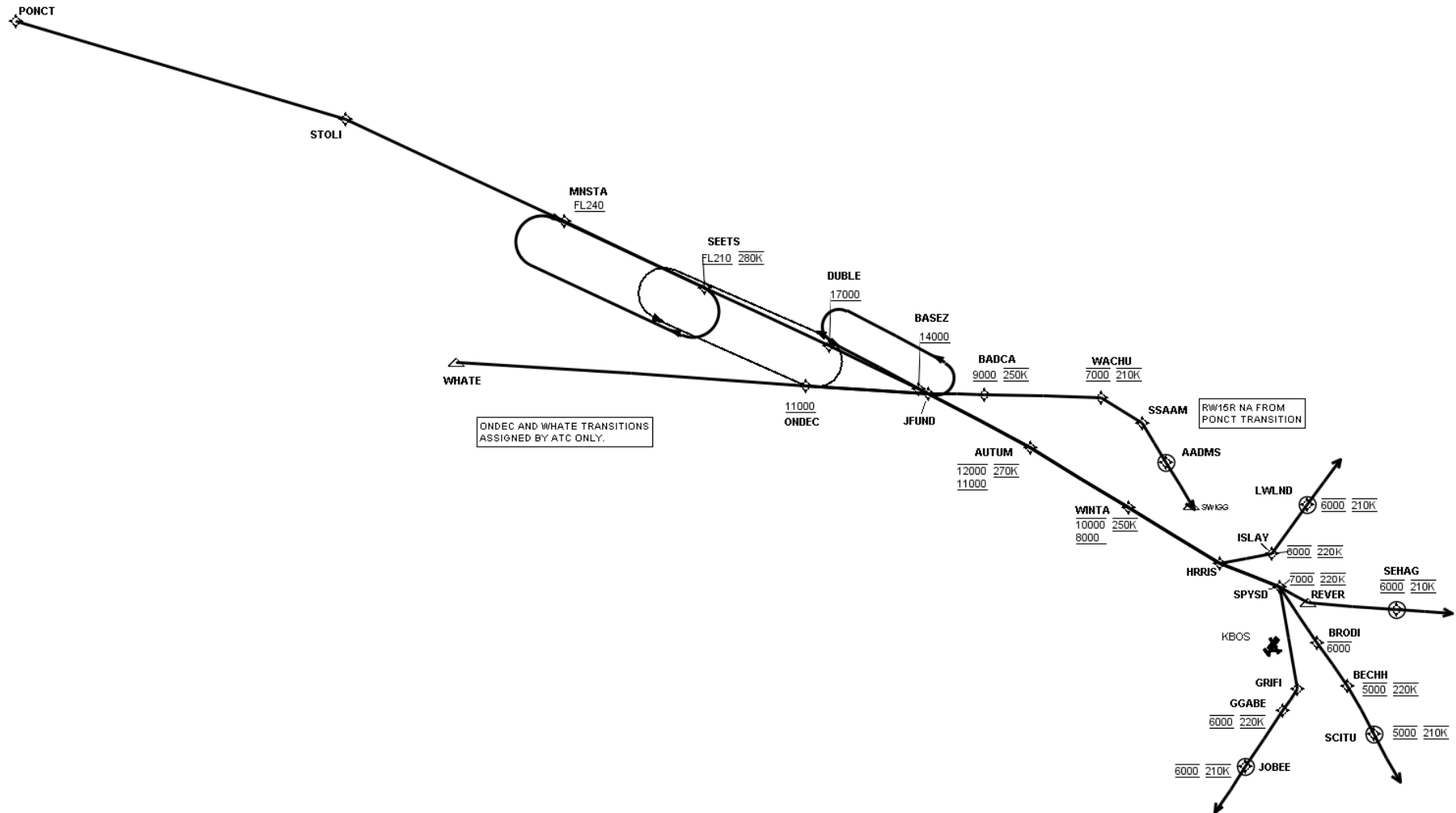
1. ON THE 7100-3; CORRECTED ALL INSTANCES OF THE COORDINATE FOR SPYSD
from 422704.64N / 0710137.08W to 422658.45N / 0710137.25W.
2. ON THE 7100-3; CORRECTED TC/DIST DATA FOR LEGS:
HRRIS-SPYSD from 095.95/05.76 to 096.97/05.77,
SPYSD-GRIFI from 153.91/09.32 to 153.62/09.23,
SPYSD-REVER from 101.99/02.97 to 100.03/02.96,
SPYSD-BRODI from 129.50/06.06 to 128.73/06.00.
3. ON THE 7100-4; CORRECTED TRACK/DIST DATA FOR LEGS:
HRRIS-SPYSD from 111.95/05.76 to 112.97/05.77,
SPYSD-GRIFI from 169.91/09.32 to 169.62/09.23,
SPYSD-REVER from 117.99/02.97 to 116.03/02.96,
SPYSD-BRODI from 145.50/06.06 to 144.73/06.00.

US DEPARTMENT of TRANSPORTATION - FEDERAL AVIATION ADMINISTRATION
STANDARD TERMINAL ARRIVAL (STAR)

Bearings, headings, courses, tracks and radials are magnetic. Elevations and altitudes are in feet. MSL. Altitudes are minimum altitudes unless otherwise indicated.

Distances are in nautical miles (NM). Graphic depiction attached.

Arrival Name	Number	STAR Computer Code	Superseded Number	Dated	Effective Date
JFUND (RNAV)	ONE	JFUND.JFUND1	NONE		
Graphic Depiction 1					



STAR (DATA RECORD)

Arrival Name JFUND (RNAV)	Number ONE	STAR Computer Code JFUND.JFUND1	Superseded Number NONE	Dated	Effective Date
------------------------------	---------------	------------------------------------	---------------------------	-------	----------------

FIX/NAVAID	LAT/LONG	C	FO/FB	LEG TYPE	TC	DIST (NM)	ALTITUDE	SPEED	REMARKS
En Route Transition									
ONDEC	423247.83N / 0720356.71W	Y		IF			AT/ABOVE 11000		ONDEC.JFUND1
JFUND	423511.34N / 0714915.93W	Y	FB	TF	077.49	11.11			
En Route Transition									
PONCT	424448.83N / 0734848.07W	Y		IF					PONCT.JFUND1
STOLI	424426.75N / 0730652.28W	Y	FB	TF	090.45	30.90			
MNSTA	424103.33N / 0723748.69W	Y	FB	TF	098.83	21.69	AT/ABOVE FL240		
SEETS	423846.19N / 0721905.71W	Y	FB	TF	099.29	14.00	AT/ABOVE FL210	AT 280K	
DUBLE	423650.17N / 0720231.58W	Y	FB	TF	098.89	12.38	AT/ABOVE 17000		
BASEZ	423521.36N / 0715036.02W	Y	FB	TF	099.47	08.93	AT/ABOVE 14000		
JFUND	423511.34N / 0714915.93W	Y	FB	TF	099.60	01.00			
En Route Transition									
WHATE	422610.03N / 0724541.96W	Y		IF					WHATE.JFUND1
ONDEC	423247.83N / 0720356.71W	Y	FB	TF	077.66	31.59	AT/ABOVE 11000		
JFUND	423511.34N / 0714915.93W	Y	FB	TF	077.49	11.11			
Runway Transition									
JFUND	423511.34N / 0714915.93W	Y		IF					
AUTUM	423301.17N / 0713532.36W	Y	FB	TF	101.99	10.37	11000B12000	AT 270K	
WINTA	423012.45N / 0712159.67W	Y	FB	TF	105.60	10.40	8000B10000	AT 250K	
HRRIS	422740.77N / 0710921.69W	Y	FB	TF	105.06	09.68			
SPYSD	422658.45N / 0710137.25W	Y	FB	TF	096.97	05.77	AT 7000	AT 220K	
GRIFI	421842.17N / 0705605.73W	Y	FB	TF	153.62	09.23			
GGABE	421629.28N / 0705703.28W	Y	FB	TF	197.83	02.33	AT 6000	AT 220K	
JOBEE	421041.96N / 0705932.15W	Y	FO	TF	197.68	06.07	AT 6000	AT 210K	
KBOS:RWY 04B				FM	197.68				RECOMMENDED NAVAID: BOS VOR/DME

QUALITY
17
CHECKED

STAR (DATA RECORD)

Arrival Name JFUND (RNAV)		Number ONE		STAR Computer Code JFUND.JFUND1		Superseded Number NONE		Dated	Effective Date
FIX/NAVAID	LAT/LONG	C	FO/FB	LEG TYPE	TC	DIST (NM)	ALTITUDE	SPEED	REMARKS
Runway Transition									
JFUND	423511.34N / 0714915.93W	Y		IF					
BADCA	423627.95N / 0714243.21W	Y	FB	TF	075.17	05.00	AT/ABOVE 9000	AT 250K	
WACHU	423908.71N / 0712851.95W	Y	FB	TF	075.25	10.57	AT 7000	AT 210K	
SSAAM	423755.51N / 0712309.86W	Y	FB	TF	106.13	04.38			
AADMS	423507.53N / 0711908.13W	Y	FO	TF	133.23	04.08			
KBOS:RWY 15R				FM	133.23				RECOMMENDED NAVAID: BOS VOR/DME
Runway Transition									
JFUND	423511.34N / 0714915.93W	Y		IF					
AUTUM	423301.17N / 0713532.36W	Y	FB	TF	101.99	10.37	11000B12000	AT 270K	
WINTA	423012.45N / 0712159.67W	Y	FB	TF	105.60	10.40	8000B10000	AT 250K	
HRRIS	422740.77N / 0710921.69W	Y	FB	TF	105.06	09.68			
ISLAY	422946.42N / 0710339.16W	Y	FB	TF	063.61	04.71	AT 6000	AT 220K	
LWLND	423456.56N / 0710106.27W	Y	FO	TF	020.02	05.50	AT 6000	AT 210K	
KBOS:RWY 22B				FM	020.02				RECOMMENDED NAVAID: BOS VOR/DME
Runway Transition									
JFUND	423511.34N / 0714915.93W	Y		IF					
AUTUM	423301.17N / 0713532.36W	Y	FB	TF	101.99	10.37	11000B12000	AT 270K	
WINTA	423012.45N / 0712159.67W	Y	FB	TF	105.60	10.40	8000B10000	AT 250K	
HRRIS	422740.77N / 0710921.69W	Y	FB	TF	105.06	09.68			
SPYSD	422658.45N / 0710137.25W	Y	FB	TF	096.97	05.77	AT 7000	AT 220K	
REVER	422627.48N / 0705741.31W	Y	FB	TF	100.03	02.96			
SEHAG	422804.94N / 0704706.19W	Y	FO	TF	078.23	08.00	AT 6000	AT 210K	
KBOS:RWY 27				FM	078.23				RECOMMENDED NAVAID: BOS VOR/DME
Runway Transition									
JFUND	423511.34N / 0714915.93W	Y		IF					
AUTUM	423301.17N / 0713532.36W	Y	FB	TF	101.99	10.37	11000B12000	AT 270K	

QUALITY

17



STAR (DATA RECORD)

Arrival Name	Number	STAR Computer Code	Superseded Number	Dated	Effective Date
JFUND (RNAV)	ONE	JFUND.JFUND1	NONE		

FIX/NAVAID	LAT/LONG	C	FO/FB	LEG TYPE	TC	DIST (NM)	ALTITUDE	SPEED	REMARKS
WINTA	423012.45N / 0712159.67W	Y	FB	TF	105.60	10.40	8000B10000	AT 250K	
HRRIS	422740.77N / 0710921.69W	Y	FB	TF	105.06	09.68			
SPYSD	422658.45N / 0710137.25W	Y	FB	TF	096.97	05.77	AT 7000	AT 220K	
BRODI	422312.97N / 0705518.28W	Y	FB	TF	128.73	06.00	AT/BELOW 6000		
BECHH	422012.83N / 0705016.49W	Y	FB	TF	128.80	04.79	AT 5000	AT 220K	
SCITU	421643.48N / 0704538.19W	Y	FO	TF	135.36	04.90	AT 5000	AT 210K	
KBOS:RWY 32, RWY 33L				FM	135.36				RECOMMENDED NAVAID: BOS VOR/DME