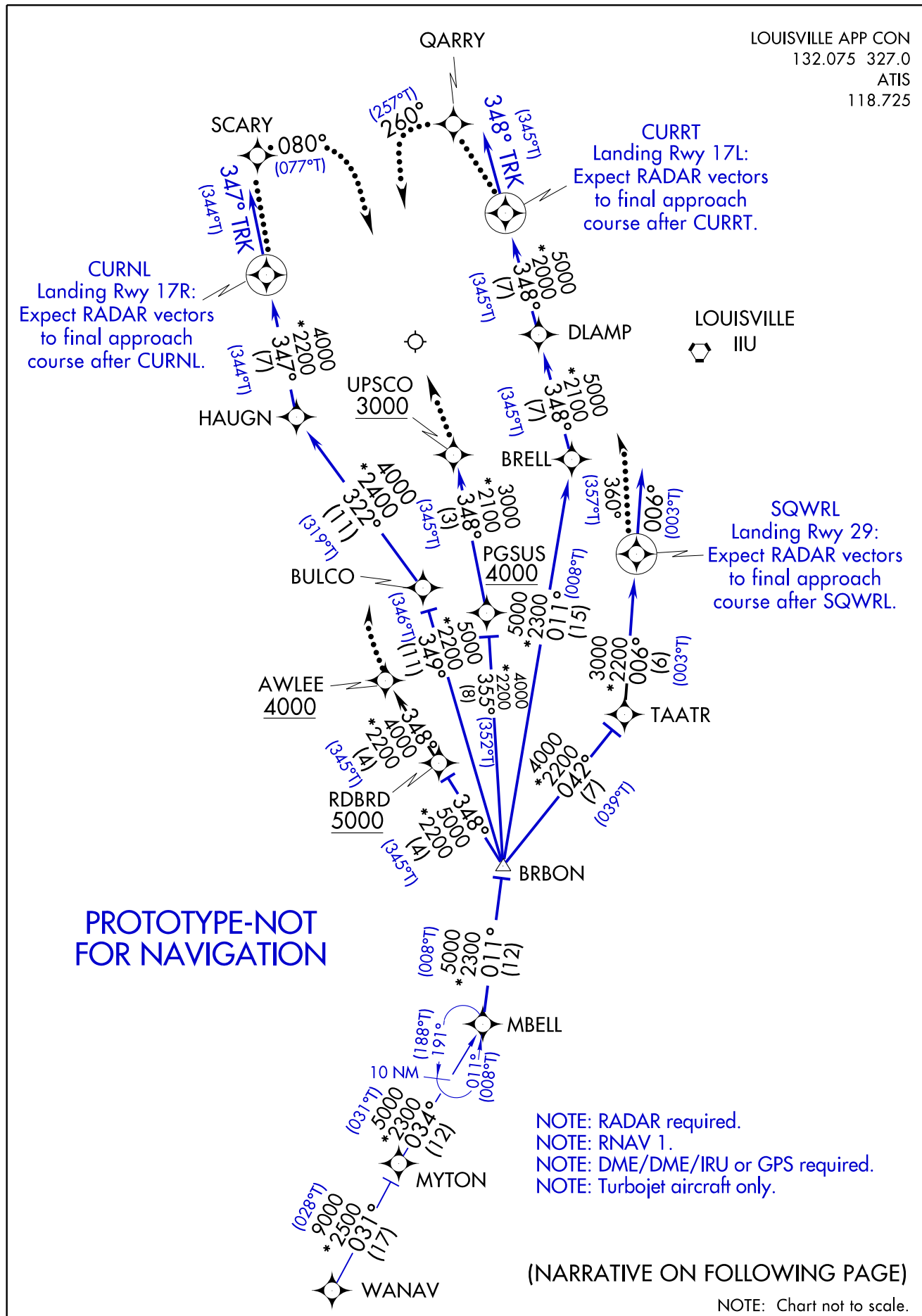


Flight Procedure Tracking Form		Action: FLIGHT CHECK	Task Type: STAR	Date Open: 04/30/2015	Task #: 2014120412223401005	Request #: 20141204122234
Procedure: STAR MBELL (RNAV) TWO LOUISVILLE KY KSDF			Airport ID: KSDF	Airport: LOUISVILLE INTL- STANDIFORD FIELD		Reimbursable #: NO
City: LOUISVILLE	ST: KY	GPS #:		Estimated Chart Date: 07/21/2016		FICO #:
Fac ID: N/A		Fac. Type:			Specialist: JEFF ANDERSON	
Procedure Review						
	Rec'd	Rel'd	Full Name		Comments	
Lead:	01/08/2016					
QA:						
Liaison:						
Procedure Comments:			ENROUTE	Remark Type: INFORMATION		
CONTACT: JULIE MORGAN, AJV-352 LEAD, 405-954-8586						

QUALITY
15
CHECKED



MBELL TWO ARRIVAL (RNAV)**ARRIVAL ROUTE DESCRIPTION**

From MBELL on track 011° to BRBON, then on assigned runway transition.

Landing Rwy 17L: From BRBON on track 011° to BRELL, then on track 348° to DLAMP, then on track 348° to CURRT, then on track 348°. Expect RADAR vectors to final approach course.

Landing Rwy 17R: From BRBON on track 349° to BULCO, then on track 322° to HAUGN, then on track 347° to CURNL, then on track 347°. Expect RADAR vectors to final approach course.

Landing Rwy 29: From BRBON on track 042° to TAATR, then on track 006° to SQWRL, then on track 006°. Expect RADAR vectors to final approach course.

Landing Rwy 35L: From BRBON on track 348° to cross RDBRD at or above 5000, then on track 348° to cross AWLEE at or above 4000. Expect ILS or LOC Rwy 35L.

Landing Rwy 35R: From BRBON on track 355° to cross PGSUS at or above 4000, then on track 348° to cross UPSCO at or above 3000. Expect ILS or LOC Rwy 35R.

LOST COMMUNICATIONS

Landing Rwy 35L: Track to AWLEE, cross AWLEE at or above 4000, intercept and execute ILS or LOC Rwy 35L approach. If unable, proceed to IIU VORTAC and hold, maintain 6000.

Landing Rwy 35R: Track to UPSCO, cross UPSCO at or above 3000, intercept and execute ILS or LOC Rwy 35R approach. If unable, proceed to IIU VORTAC and hold, maintain 6000.

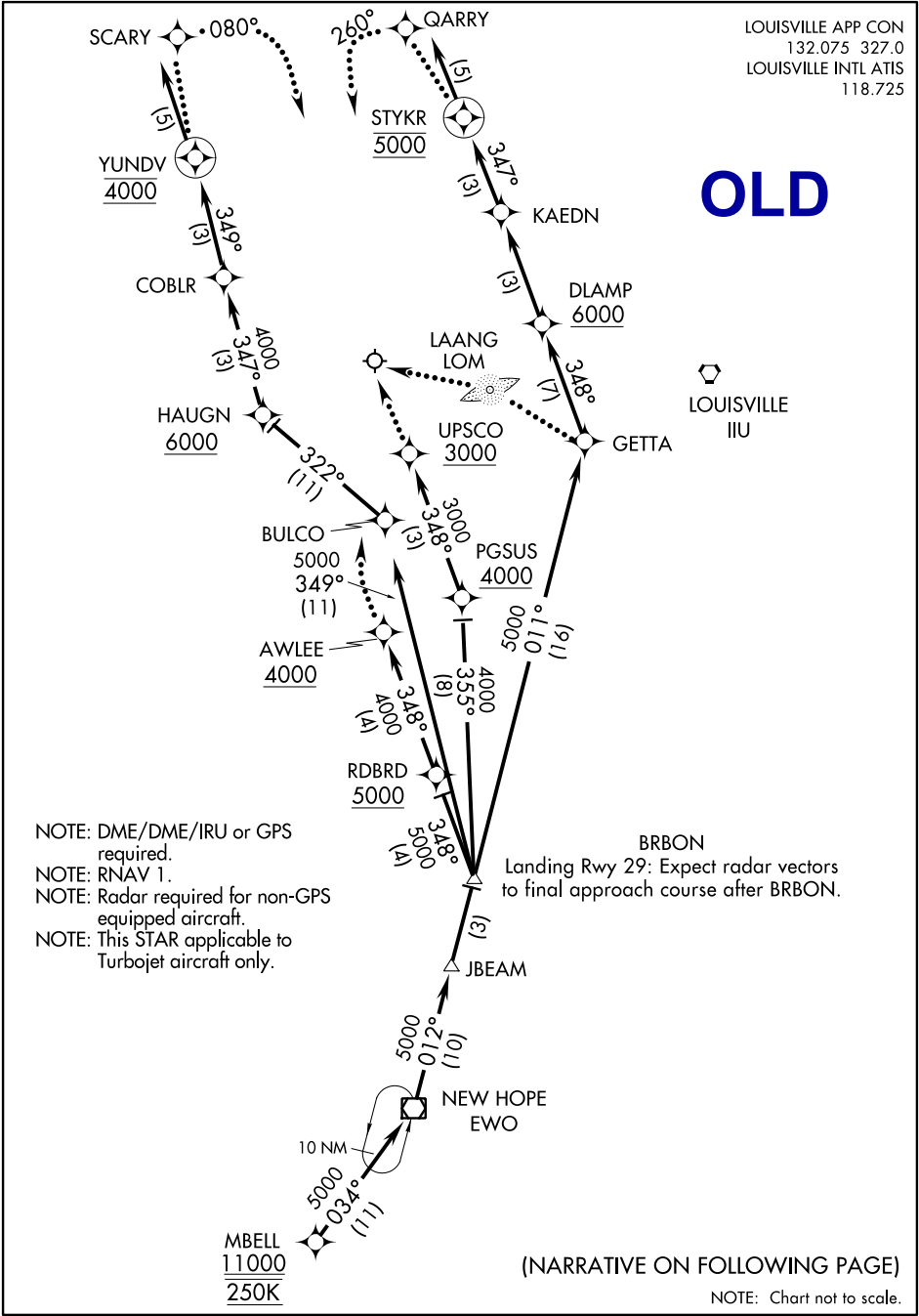
Landing Rwy 17L: Track to CURRT, cross CURTT at 5000, then proceed direct QARRY, at QARRY fly heading 260°, maintain 5000, intercept and execute ILS or LOC Rwy 17L approach. If unable, proceed to IIU VORTAC and hold, maintain 6000.

Landing Rwy 17R: Track to CURNL, cross CURNL at 4000, then proceed direct SCARY, at SCARY fly heading 080°, maintain 4000, intercept and execute ILS or LOC Rwy 17R approach. If unable, proceed to IIU VORTAC and hold, maintain 6000.

Landing Rwy 29: Track to SQWRL, cross SQWRL at 3000, at SQWRL fly heading 360°, intercept and execute LOC Rwy 29 approach. If unable, proceed to IIU VORTAC and hold, maintain 6000.

PROTOTYPE-NOT FOR NAVIGATION

MBELL ONE ARRIVAL (RNAV)



SE-1, 04 FEB 2016 to 03 MAR 2016

SE-1, 04 FEB 2016 to 03 MAR 2016

OLD

ARRIVAL ROUTE DESCRIPTION

From over MBELL on track 034° to EWO VOR/DME, then on track 012° to JBEAM, then on track 012° to BRBON, thence on assigned runway transition. . . .

Landing Rwy 17L: From over BRBON on track 011° to GETTA, then on track 348° to DLAMP, then on track 348° to KAEDN, then on track 347° to STYKR, then on track 347°. Expect radar vectors to final approach course.

Landing Rwy 17R: From over BRBON on track 349° to BULCO, then on track 322° to HAUGN, then on track 347° to COBLR, then on track 349° to YUNDV, then on track 349°. Expect radar vectors to final approach course.

Landing Rwy 35L: From over BRBON on track 348° to RDBRD, then on track 348° to AWLEE. Expect ILS Rwy 35L approach.

Landing Rwy 35R: From over BRBON on track 355° to PGSUS, then on track 348° to UPSCO. Expect ILS Rwy 35R approach.

Landing Rwy 29: From over BRBON on track 011° to GETTA, then on track 348° to DLAMP, then on track 348° to KAEDN, then on track 347° to STYKR, then on track 347°. Expect radar vectors to final approach course after BRBON.

LOST COMMUNICATIONS:

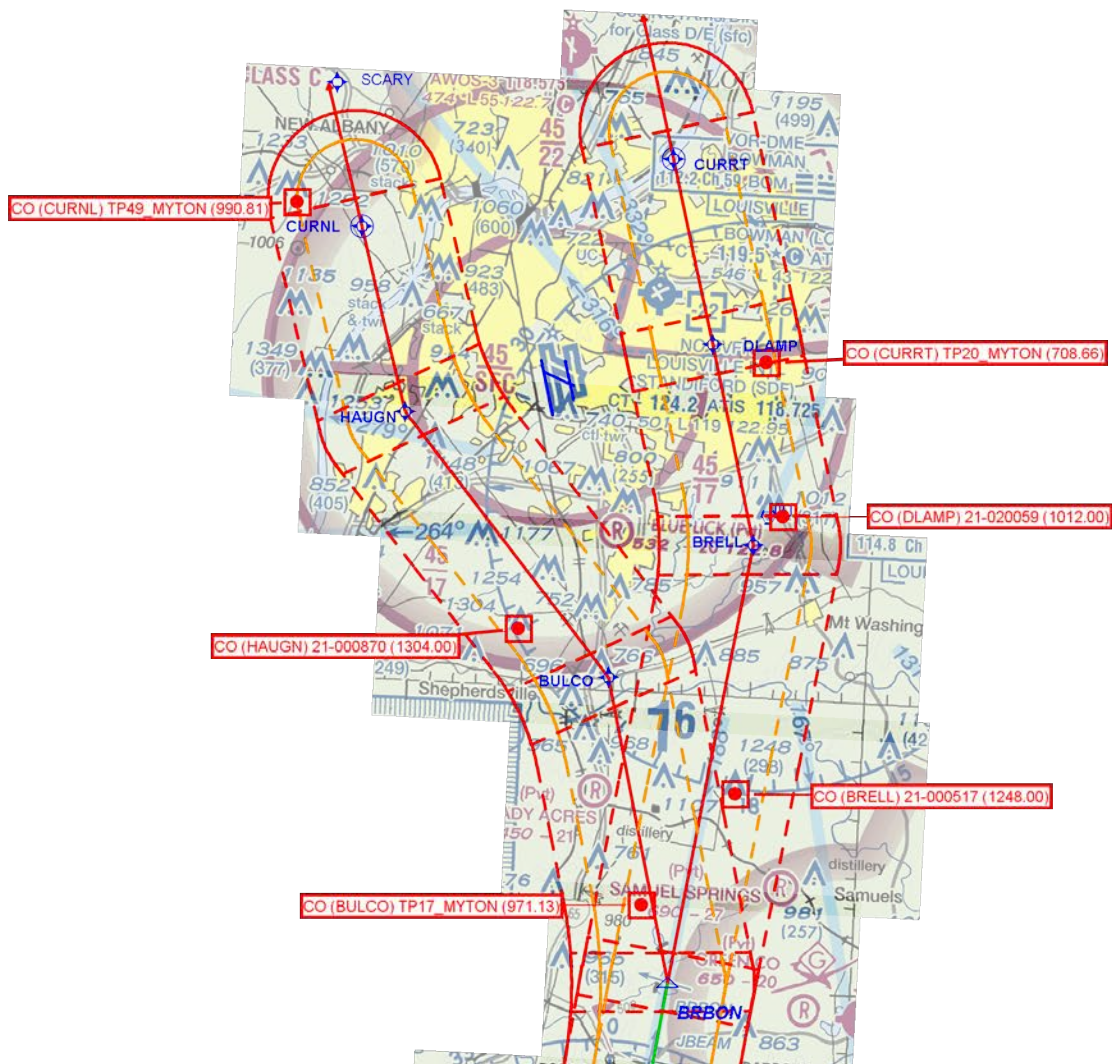
Landing Rwy 17R: Track to YUNDV, then proceed direct SCARY. At SCARY, fly heading 080°, maintain 4000, intercept and execute ILS or LOC Rwy 17R approach. If unable, proceed to IIU VORTAC and hold, maintain 6000.

Landing Rwy 17L: Track to STYKR, then proceed direct QARRY. At QARRY, fly heading 260°, maintain 5000, intercept and execute ILS or LOC Rwy 17L approach. If unable, proceed to IIU VORTAC and hold, maintain 6000.

Landing Rwy 29: Track to GETTA, maintain 6000, then proceed to LAANG LOM, maintain 4000, execute LOC Rwy 29 approach. If unable proceed to IIU VORTAC and hold, maintain 6000.

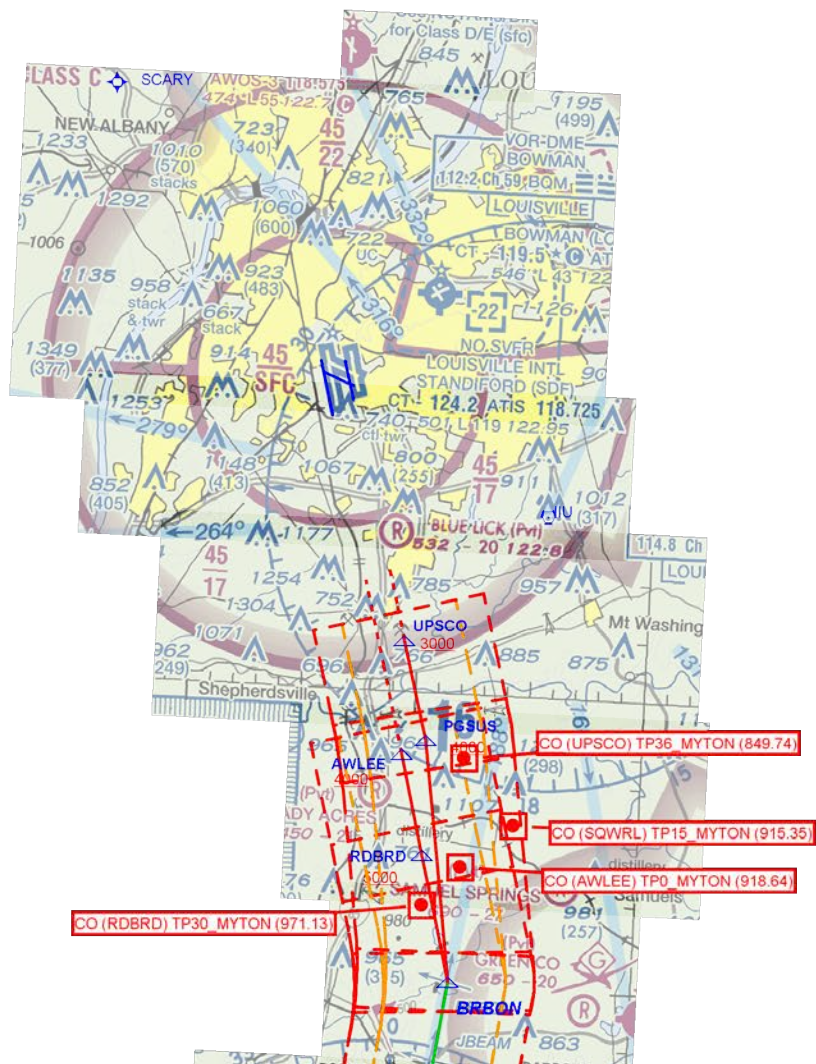
Landing Rwy 35L: Track to AWLEE, intercept and execute ILS or LOC Rwy 35L approach. If unable, proceed to IIU VORTAC and hold, maintain 6000.

Landing Rwy 35R: Track to UPSCO, intercept and execute ILS or LOC Rwy 35R approach. If unable, proceed to IIU VORTAC and hold, maintain 6000.



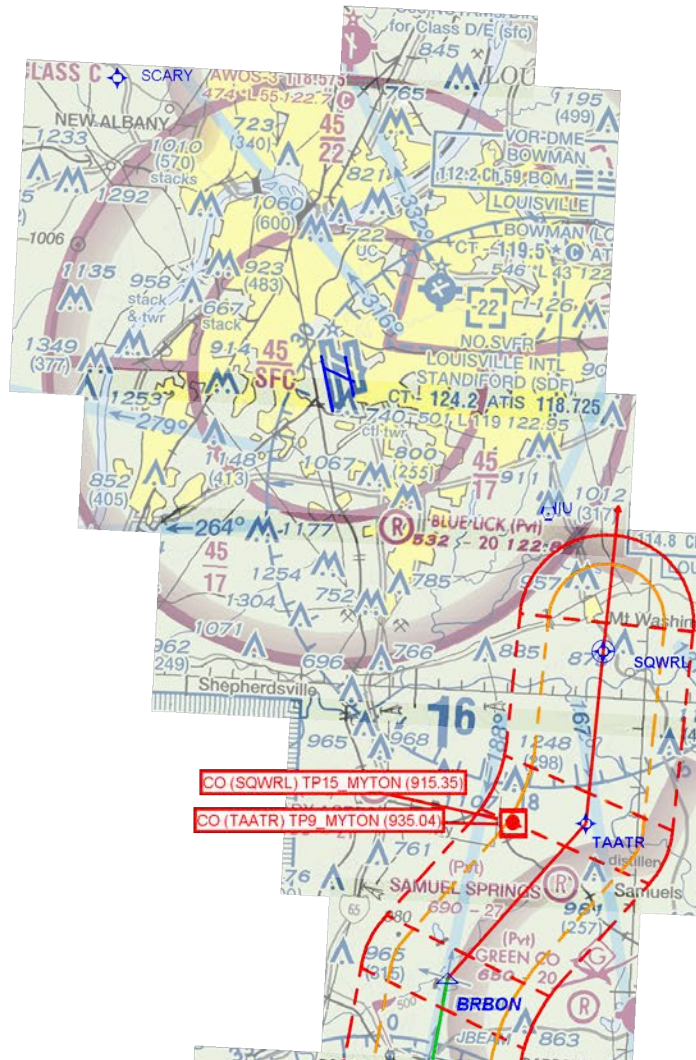
MBELL_ (RNAV)

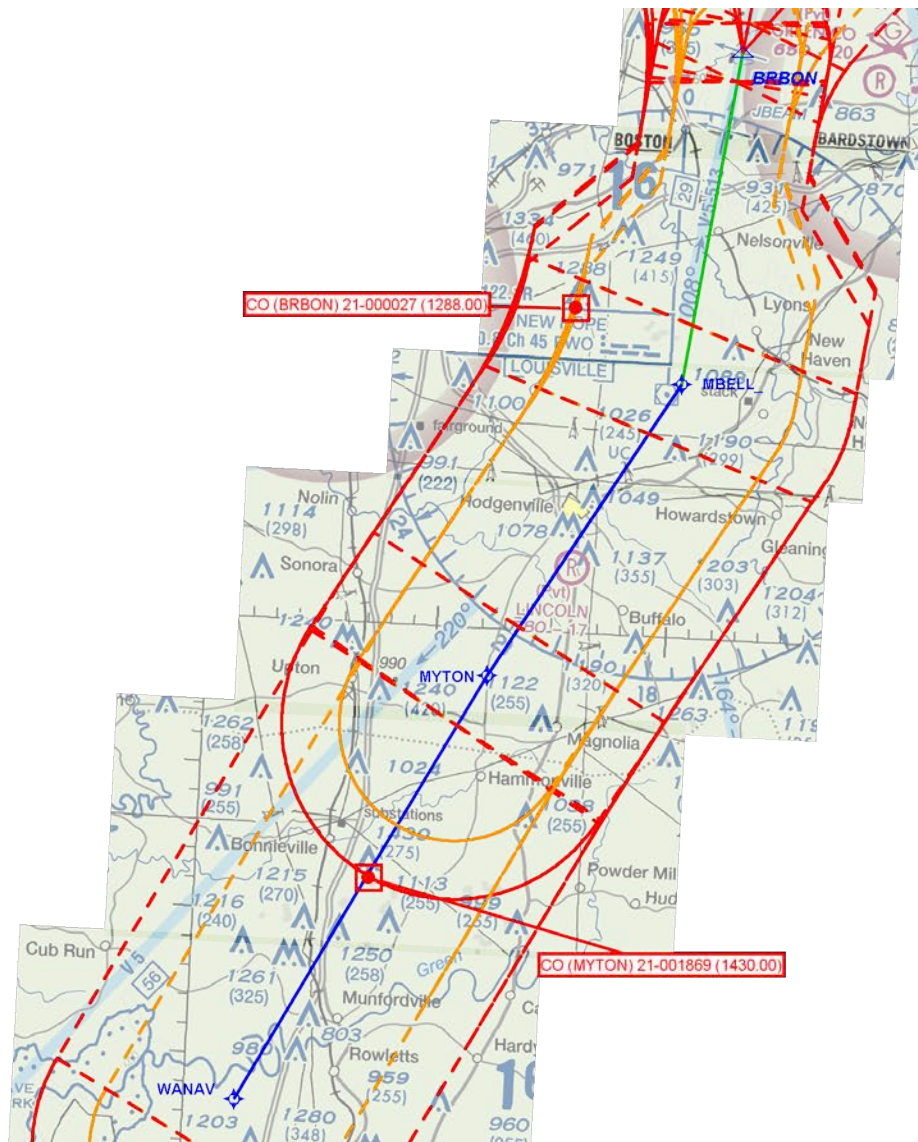
MAP 1 of 5



MBELL_ (RNAV)

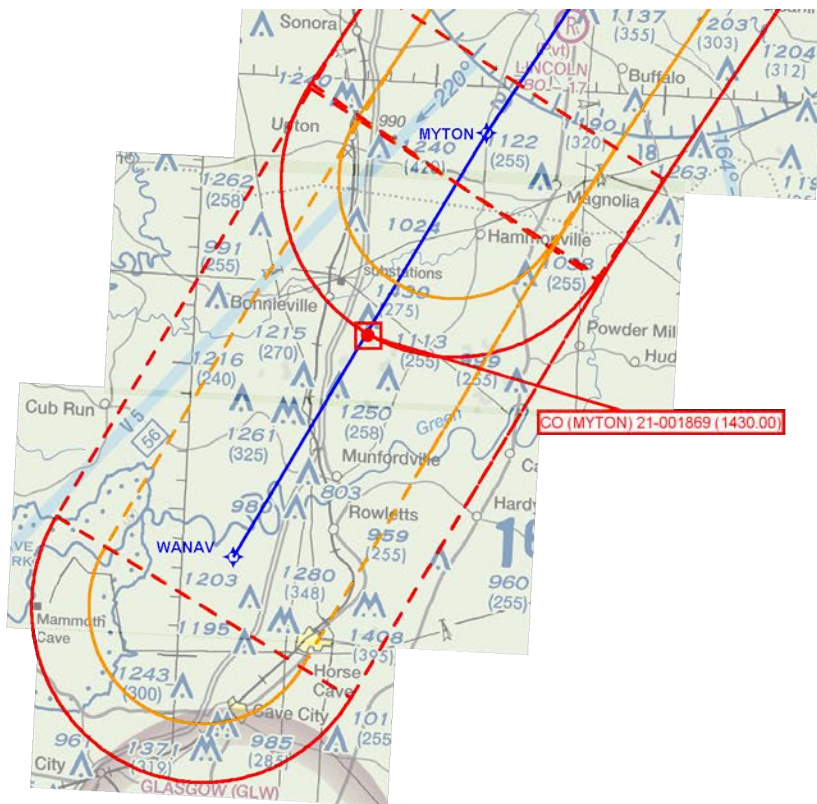
MAP 2 of 5





MBELL_ (RNAV)

MAP 4 of 5



MBELL_ (RNAV)

MAP 5 of 5