

US DEPARTMENT of TRANSPORTATION - FEDERAL AVIATION ADMINISTRATION  
**STANDARD TERMINAL ARRIVAL (STAR)**

Bearings, headings, courses, tracks and radials are magnetic. Elevations and altitudes are in feet. MSL. Altitudes are minimum altitudes unless otherwise indicated.  
Distances are in nautical miles (NM). Graphic depiction attached.

Arrival Name	Number	STAR Computer Code	Superseded Number	Dated	Effective Date
<b>MBELL (RNAV)</b>	<b>TWO</b>	<b>MBELL.MBELL2</b>	<b>ONE</b>	<b>26 JUL 2012</b>	

TRANSITION ROUTES:

Transition Name	Transition Computer Codes	From FIX/NAVAID	To FIX/NAVAID	Mag Course	Distance	MEA	MOCA	MAA	Crossing Altitudes / Fixes
MYTON	MYTON.MBELL2	MYTON	MYTON						
			MBELL	034.17	12.02	5000	2300		
WANAV	WANAV.MBELL2	WANAV	WANAV						
			MYTON	031.19	16.93	9000	2500		
			MBELL	034.17	12.02	5000	2300		

ARRIVAL ROUTE DESCRIPTION:

FROM MBELL ON TRACK 010.53/11.54 TO BRBON (MEA 5000/MOCA 2300), THEN ON ASSIGNED RUNWAY TRANSITION.

LANDING RWY 17L: FROM BRBON ON TRACK 011.18/15.22 TO BRELL (MEA 5000/MOCA 2300), THEN ON TRACK 348.48/7.00 TO DLAMP (MEA 5000/MOCA 2100), THEN ON TRACK 347.95/6.50 TO CURRT (MEA 5000/MOCA 2000), THEN ON TRACK 347.95. EXPECT RADAR VECTORS TO FINAL APPROACH COURSE.

LANDING RWY 17R: FROM BRBON ON TRACK 348.91/10.61 TO BULCO (MEA 5000/MOCA 2200), THEN ON TRACK 322.41/11.48 TO HAUGN (MEA 4000/MOCA 2400), THEN ON TRACK 346.86/6.50 TO CURNL (MEA 4000/MOCA 2200), THEN ON TRACK 346.86. EXPECT RADAR VECTORS TO FINAL APPROACH COURSE.

LANDING RWY 29: FROM BRBON ON TRACK 042.06/7.11 TO TAATR (MEA 4000/MOCA 2200), THEN ON TRACK 005.93/5.91 TO SQWRL (MEA 3000/MOCA 2200), THEN ON TRACK 005.93. EXPECT RADAR VECTORS TO FINAL APPROACH COURSE.

LANDING RWY 35L: FROM BRBON ON TRACK 348.45/4.41 TO CROSS RDBRD AT OR ABOVE 5000 (MEA 5000/MOCA 2200), THEN ON TRACK 348.44/3.53 TO CROSS AWLEE AT OR ABOVE 4000 (MEA 4000/MOCA 2200). EXPECT ILS OR LOC RWY 35L.

LANDING RWY 35R: FROM BRBON ON TRACK 354.79/8.29 TO CROSS PGSUS AT OR ABOVE 4000 (MEA 4000/MOCA 2200), THEN ON TRACK 347.96/3.49 TO CROSS UPSCO AT OR ABOVE 3000 (MEA 3000/MOCA 2100). EXPECT ILS OR LOC RWY 35R.

PROCEDURAL DATA NOTES:

NOTE: RADAR REQUIRED

NOTE: RNAV 1

NOTE: DME/DME/IRU OR GPS REQUIRED

NOTE: TURBOJET AIRCRAFT ONLY

FIXES AND/OR HOLDING PATTERNS:

CHART HOLDING AT MBELL: S, LT, 010.53 INBOUND 10 NM LEGS.

CHART QARRY AND SCARY AS STAND-ALONE WAYPOINTS.

CHART IIU VORTAC.

COMMUNICATIONS:

LOUISVILLE APP CON.

STANDIFORD ATIS.

AIRPORTS SERVED:

LOUISVILLE INTL-STANDIFORD FIELD, LOUISVILLE, KY

US DEPARTMENT of TRANSPORTATION - FEDERAL AVIATION ADMINISTRATION  
**STANDARD TERMINAL ARRIVAL (STAR)**

Bearings, headings, courses, tracks and radials are magnetic. Elevations and altitudes are in feet. MSL. Altitudes are minimum altitudes unless otherwise indicated.  
Distances are in nautical miles (NM). Graphic depiction attached.

Arrival Name	Number	STAR Computer Code	Superseded Number	Dated	Effective Date
<b>MBELL (RNAV)</b>	<b>TWO</b>	<b>MBELL.MBELL2</b>	<b>ONE</b>	<b>26 JUL 2012</b>	

LOST COMMUNICATIONS PROCEDURE:

LANDING RWY 35L: TRACK TO AWLEE, CROSS AWLEE AT OR ABOVE 4000, INTERCEPT AND EXECUTE ILS OR LOC RWY 35L APPROACH. IF UNABLE, PROCEED TO IIU VORTAC AND HOLD, MAINTAIN 6000.

LANDING RWY 35R: TRACK TO UPSCO, CROSS UPSCO AT OR ABOVE 3000, INTERCEPT AND EXECUTE ILS OR LOC RWY 35R APPROACH. IF UNABLE, PROCEED TO IIU VORTAC AND HOLD, MAINTAIN 6000.

LANDING RWY 17L: TRACK TO CURRT, CROSS CURTT AT 5000, THEN PROCEED DIRECT QARRY, AT QARRY FLY HEADING 260, MAINTAIN 5000, INTERCEPT AND EXECUTE ILS OR LOC RWY 17L APPROACH. IF UNABLE, PROCEED TO IIU VORTAC AND HOLD, MAINTAIN 6000.

LANDING RWY 17R: TRACK TO CURNL, CROSS CURNL AT 4000, THEN PROCEED DIRECT SCARY, AT SCARY FLY HEADING 080, MAINTAIN 4000, INTERCEPT AND EXECUTE ILS OR LOC RWY 17R APPROACH. IF UNABLE, PROCEED TO IIU VORTAC AND HOLD, MAINTAIN 6000.

LANDING RWY 29: TRACK TO SQWRL, CROSS SQWRL AT 3000, AT SQWRL FLY HEADING 360, INTERCEPT AND EXECUTE LOC RWY 29 APPROACH. IF UNABLE, PROCEED TO IIU VORTAC AND HOLD, MAINTAIN 6000.

REMARKS:

DEPICT SCARY OFFSET FROM FM LEG AFTER CURNL TO AVOID AIRCREW MISUNDERSTANDING.

DEPICT QARRY OFFSET FROM FM LEG AFTER CURRT TO AVOID AIRCREW MISUNDERSTANDING.

ADDITIONAL FLIGHT DATA:

DME/DME ASSESSMENT: SAT (RNP 2.0)

REFERENCE MAGNETIC VARIATION = KSDF 03W/1995.

SPECIAL CHARTING REQUEST: INSERT "TRK" ON GRAPHIC DEPICTION AFTER MAGNETIC COURSES ON FM LEGS AFTER CURNL AND CURRT.

CHART AT CURNL: "LANDING RWY 17R: EXPECT RADAR VECTORS TO FINAL APPROACH COURSE AFTER CURNL."

CHART AT CURRT: "LANDING RWY 17L: EXPECT RADAR VECTORS TO FINAL APPROACH COURSE AFTER CURRT."

CHART AT SQWRL: "LANDING RWY 29: EXPECT RADAR VECTORS TO FINAL APPROACH COURSE AFTER SQWRL."

FLIGHT INSPECTED BY:

Name	Organization	Date	Signature
------	--------------	------	-----------

DEVELOPED BY:

THOMAS DURY, MANAGER, AIRSPACE AND  
PROCEDURES

INDIANAPOLIS ARTCC

Name	Organization	Date	Signature
------	--------------	------	-----------

APPROVED BY:

MARLON J. ROBINSON, MANAGER

AJV-5410

Name	Organization	Date	Signature
------	--------------	------	-----------

CHANGES:

1. ALTITUDE RESTRICTIONS REMOVED AT MBELL, DLAMP, AND HAUGN.
2. NEW RWY 29 TRANSITION CREATED WITH TAATR AND SQWRL WAYPOINTS.
3. MBELL MOVED 12NM NE; COMMEMORATIVE NAME RETAINED.
4. EWO VOR/DME REMOVED FROM PROCEDURE.

US DEPARTMENT of TRANSPORTATION - FEDERAL AVIATION ADMINISTRATION  
**STANDARD TERMINAL ARRIVAL (STAR)**

Bearings, headings, courses, tracks and radials are magnetic. Elevations and altitudes are in feet. MSL. Altitudes are minimum altitudes unless otherwise indicated.  
Distances are in nautical miles (NM). Graphic depiction attached.

Arrival Name	Number	STAR Computer Code	Superseded Number	Dated	Effective Date
<b>MBELL (RNAV)</b>	<b>TWO</b>	<b>MBELL.MBELL2</b>	<b>ONE</b>	<b>26 JUL 2012</b>	

5. CHARTED HOLDING AT RELOCATED MBELL ADDED.
6. COMMON ROUTE REVISED TO PROCEED FROM RELOCATED MBELL TO BRBON.
7. JBEAM REMOVED FROM PROCEDURE.
8. WANAV ENROUTE TRANSITION CREATED WITH MYTON WAYPOINT.
9. MYTON ENROUTE TRANSITION CREATED.
10. BRELL ADDED TO RWY 17L TRANSITION.
11. LOST COMMUNICATION PROCEDURES REVISED FOR LANDING RWY 17L/17R/29 TO REFLECT NEW RWY 29 AND REVISED RUNWAY TRANSITIONS.
12. PILOT PLANNING GRAPHIC CHART NOTES FOR LANDING RWY 17L/17R/29 REVISED.
13. CURNL ADDED TO RWY 17R TRANSITION.
14. GETTA REMOVED FROM RWY 17L TRANSITION.
15. COBLR REMOVED FROM RWY 17R TRANSITION.
16. CURRT ADDED TO RWY 17L TRANSITION.
17. YUNDV REMOVED FROM RWY 17R TRANSITION.
18. STYKR REMOVED FROM RWY 17L TRANSITION.
19. KAEDN REMOVED FROM RWY 17L TRANSITION.
20. LAANG LOM STAND-ALONE FIX REMOVED.

REASONS:

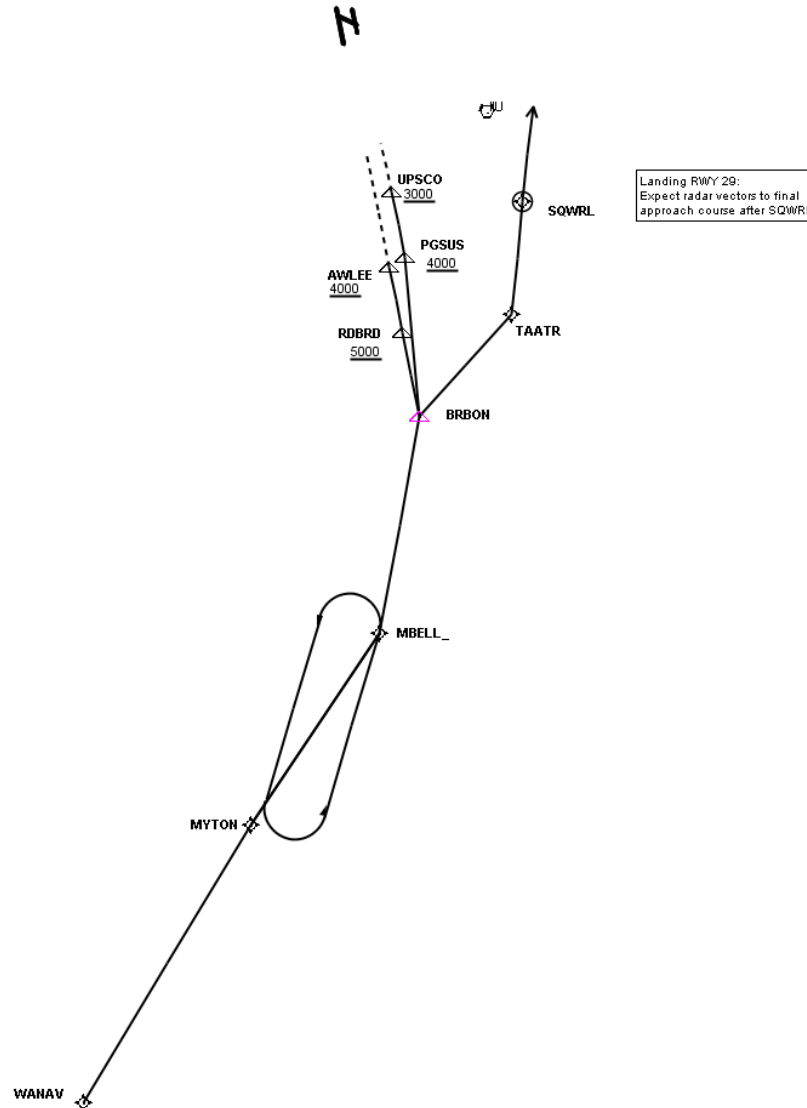
1. CORRECTIVE ACTION REPORT AND AIR TRAFFIC SAFETY ACTION PROGRAM REPORT RESOLUTION.
2. EFFICIENCY FOR RWY 29 ARRIVALS.
3. PROCEDURE NAMING CONVENTION CRITERIA.
- 4-6. GROUND-BASED NAVAID REMOVED FROM PROCEDURE.
7. WAYPOINT NOT NECESSARY.
- 8-9. TRAFFIC MANAGEMENT.
10. TRAFFIC FLOW CONSISTENCY WITH MAUDD ARRIVAL.
- 11-12. ARRIVAL ROUTES REVISED.
- 13-19. PROCEDURE DISCONNECTED FROM RNP APPROACHES.
20. NAVAID NOT RELEVANT TO PROCEDURE.

US DEPARTMENT of TRANSPORTATION - FEDERAL AVIATION ADMINISTRATION  
**STANDARD TERMINAL ARRIVAL (STAR)**

Bearings, headings, courses, tracks and radials are magnetic. Elevations and altitudes are in feet. MSL. Altitudes are minimum altitudes unless otherwise indicated.

Distances are in nautical miles (NM). Graphic depiction attached.

Arrival Name	Number	STAR Computer Code	Superseded Number	Dated	Effective Date
<b>MBELL (RNAV)</b>	<b>TWO</b>	<b>MBELL.MBELL2</b>	<b>ONE</b>	<b>26 JUL 2012</b>	
<b>Graphic Depiction 1</b>					

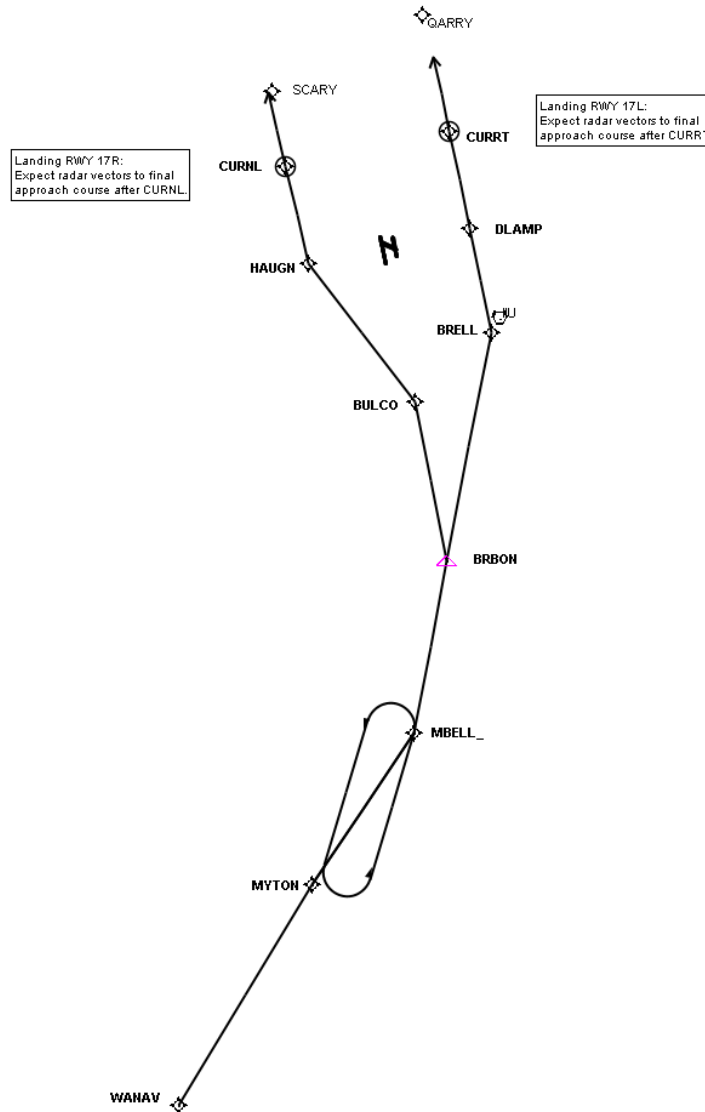


US DEPARTMENT of TRANSPORTATION - FEDERAL AVIATION ADMINISTRATION  
**STANDARD TERMINAL ARRIVAL (STAR)**

Bearings, headings, courses, tracks and radials are magnetic. Elevations and altitudes are in feet. MSL. Altitudes are minimum altitudes unless otherwise indicated.

Distances are in nautical miles (NM). Graphic depiction attached.

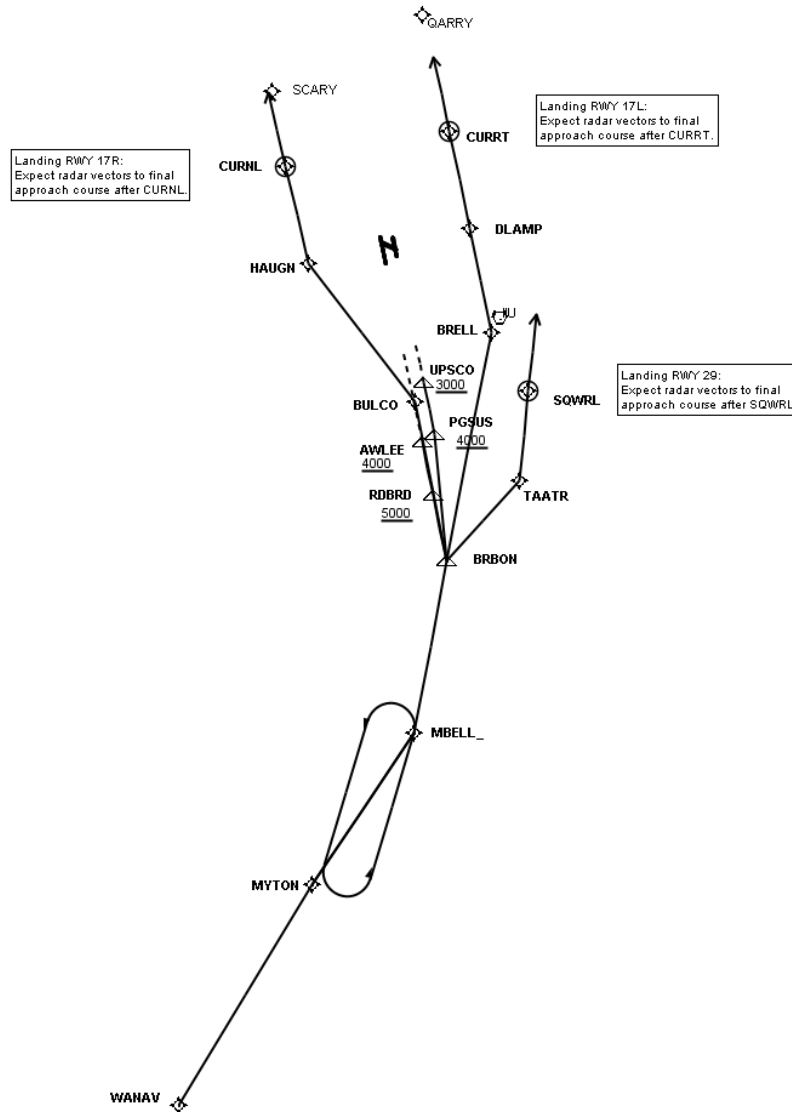
Arrival Name	Number	STAR Computer Code	Superseded Number	Dated	Effective Date
<b>MBELL (RNAV)</b>	<b>TWO</b>	<b>MBELL.MBELL2</b>	<b>ONE</b>	<b>26 JUL 2012</b>	
<b>Graphic Depiction 2</b>					



US DEPARTMENT of TRANSPORTATION - FEDERAL AVIATION ADMINISTRATION  
**STANDARD TERMINAL ARRIVAL (STAR)**

Bearings, headings, courses, tracks and radials are magnetic. Elevations and altitudes are in feet. MSL. Altitudes are minimum altitudes unless otherwise indicated.  
 Distances are in nautical miles (NM). Graphic depiction attached.

Arrival Name	Number	STAR Computer Code	Superseded Number	Dated	Effective Date
<b>MBELL (RNAV)</b>	<b>TWO</b>	<b>MBELL.MBELL2</b>	<b>ONE</b>	<b>26 JUL 2012</b>	
<b>Graphic Depiction 3</b>					



## STAR (DATA RECORD)

Arrival Name MBELL (RNAV)		Number TWO		STAR Computer Code MBELL.MBELL2		Superseded Number ONE		Dated 26 JUL 2012	Effective Date
FIX/NAVAID	LAT/LONG	C	FO/FB	LEG TYPE	TC	DIST (NM)	ALTITUDE	SPEED	REMARKS
En Route Transition									
MYTON	372825.00N / 0854745.00W	Y		IF					MYTON.MBELL2
MBELL	373842.61N / 0853954.95W	Y	FB	TF	031.17	12.02			
En Route Transition									
WANAV	371329.00N / 0855747.78W	Y		IF					WANAV.MBELL2
MYTON	372825.00N / 0854745.00W	Y	FB	TF	028.19	16.93			
MBELL	373842.61N / 0853954.95W	Y	FB	TF	031.17	12.02			
Common Route									
MBELL	373842.61N / 0853954.95W	Y		IF					MBELL.MBELL2
BRBON	375009.94N / 0853800.33W	Y	FB	TF	007.53	11.54			
Runway Transition									
BRBON	375009.94N / 0853800.33W	Y		IF					
BRELL	380514.95N / 0853515.79W	Y	FB	TF	008.18	15.22			
DLAMP	381201.95N / 0853729.40W	Y	FB	TF	345.48	07.00			
CURRT	381818.96N / 0853938.03W		FO	TF	344.95	06.50			
KSDF:RWY 17L				FM	344.95				RECOMMENDED NAVAID: RID VORTAC
Runway Transition									
BRBON	375009.94N / 0853800.33W	Y		IF					
BULCO	380028.33N / 0854116.46W	Y	FB	TF	345.91	10.61			
HAUGN	380911.74N / 0855044.80W	Y	FB	TF	319.41	11.48			
CURNL	381526.75N / 0855302.45W		FO	TF	343.86	06.50			
KSDF:RWY 17R				FM	343.86				RECOMMENDED NAVAID: RID VORTAC
Runway Transition									
BRBON	375009.94N / 0853800.33W	Y		IF					
TAATR	375541.49N / 0853220.56W	Y	FB	TF	039.06	07.11			

QUALITY  
17  
CHECKED

QUALITY  
17  
CHECKED

**STAR (DATA RECORD)**

Arrival Name	Number	STAR Computer Code	Superseded Number	Dated	Effective Date
<b>MBELL (RNAV)</b>	<b>TWO</b>	<b>MBELL.MBELL2</b>	<b>ONE</b>	<b>26 JUL 2012</b>	

FIX/NAVAID	LAT/LONG	C	FO/FB	LEG TYPE	TC	DIST (NM)	ALTITUDE	SPEED	REMARKS
SQWRL	380136.14N / 0853157.60W	Y	FO	TF	002.93	05.91			
KSDF:RWY 29				FM	002.93				RECOMMENDED NAVAID: RID VORTAC

**Runway Transition**

BRBON	375009.94N / 0853800.33W	Y		IF					
RDBRD	375426.53N / 0853924.36W	Y	FB	TF	345.45	04.41	AT/ABOVE 5000		
AWLEE	375751.97N / 0854031.76W	Y	FB	TF	345.44	03.53	AT/ABOVE 4000		
KSDF:RWY 35L									

**Runway Transition**

BRBON	375009.94N / 0853800.33W	Y		IF					
PGSUS	375823.03N / 0853930.25W	Y	FB	TF	351.79	08.29	AT/ABOVE 4000		
UPSCO	380145.69N / 0854039.09W	Y	FB	TF	344.96	03.49	AT/ABOVE 3000		
KSDF:RWY 35R									

