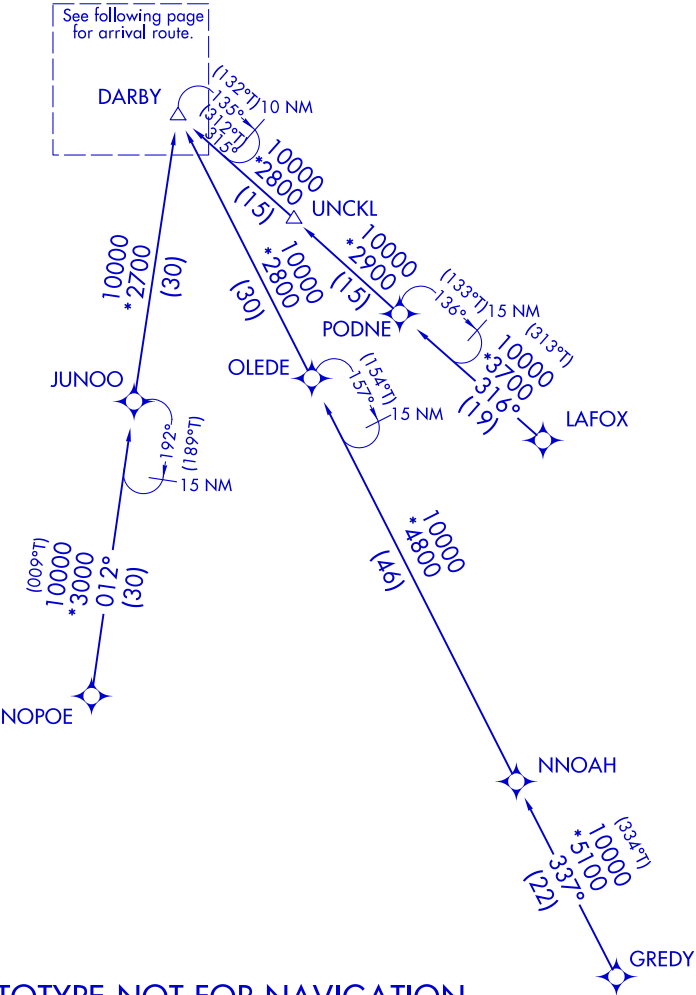


Flight Procedure Tracking Form		Action: FLIGHT CHECK	Task Type: STAR	Date Open: 04/30/2015	Task #: 2014120412223401004	Request #: 20141204122234
Procedure: STAR MAUDD (RNAV) FOUR LOUISVILLE KY KSDF			Airport ID: KSDF	Airport: LOUISVILLE INTL- STANDIFORD FIELD		Reimbursable #: NO
City: LOUISVILLE	ST: KY	GPS #:	Estimated Chart Date: 07/21/2016			FICO #:
Fac ID: N/A		Fac. Type:			Specialist: JEFF ANDERSON	
Procedure Review						
	Rec'd	Rel'd	Full Name	Comments		
Lead:	01/08/2016					
QA:						
Liaison:						
Procedure Comments: ENROUTE Remark Type: INFORMATION						
CONTACT: JULIE MORGAN, AJV-352 LEAD, 405-954-8586						



NOTE: Radar required.
NOTE: RNAV 1.
NOTE: DME/DME/IRU or GPS required.
NOTE: Turbojet aircraft only.

LOUISVILLE APP CON
132.075 327.0
ATIS
118.725



NOTE: Chart not to scale. (CONTINUED ON FOLLOWING PAGE)

LOUISVILLE, KENTUCKY

LOUISVILLE INTL-STANDIFORD FIELD (SDF)

MAUDD FOUR ARRIVAL (RNAV)

ARRIVAL ROUTE DESCRIPTION

GREDY TRANSITION (GREDY.MAUDD4)LAFOX TRANSITION (LAFOX.MAUDD4)NOPOE TRANSITION (NOPOE.MAUDD4)UNCKL TRANSITION (UNCKL.MAUDD4)

From DARBY on track 315° to MAUDD, then on track 315° to TUKKR. Then on assigned runway transition

LANDING RWYS 17L/R: From TUKKR on track 312° to BRELL, then on track 348° to DLAMP, then on track 348° to CURRT, then on track 348°. Expect radar vectors to final approach course.

LANDING RWY 29: From TUKKR on track 298° to INDAA, then on track 350° to VILL, then on heading 320°. Expect radar vectors to final approach course.

LANDING RWY 35L: From TUKKR on track 275° to cross RDBRD at or above 5000, then on track 348° to cross AWLEE at or above 4000. Expect ILS or LOC Rwy 35L.

LANDING RWY 35R: From TUKKR on track 288° to cross PGSUS at or above 4000, then on track 348° to cross UPSCO at or above 3000. Expect ILS or LOC Rwy 35R.

LOST COMMUNICATIONS:

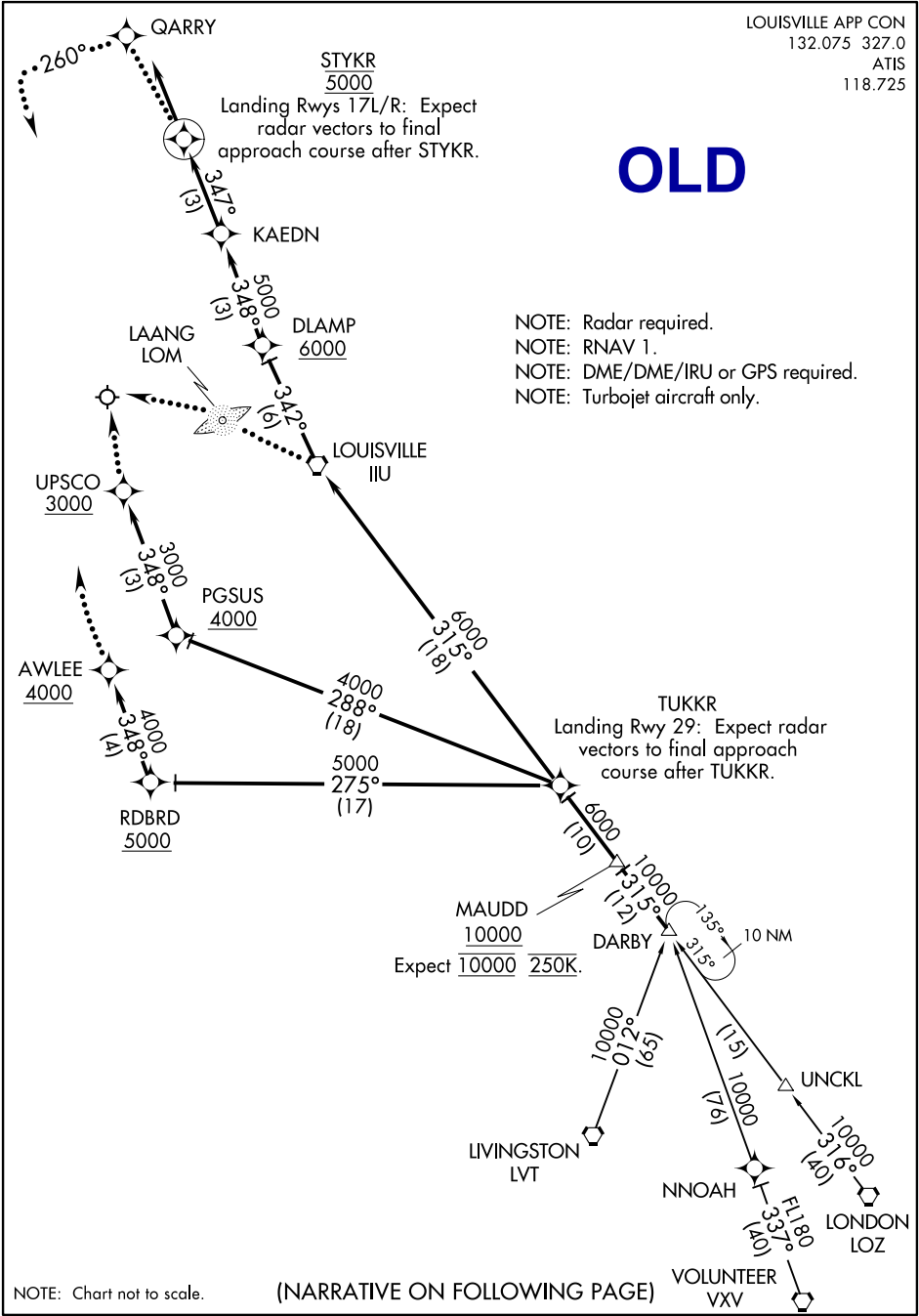
Landing Rwy 17L/R: Track to CURRT, cross CURRT at 5000, then proceed direct QARRY, at QARRY fly heading 260°, maintain 5000, intercept and execute ILS or LOC RWY 17L approach. If unable, proceed to IIU VORTAC and hold, maintain 6000.

Landing Rwy 29: Track to VILL, cross VILL at 3000, at VILL fly heading 310°, intercept and execute LOC RWY 29 approach. If unable, proceed to IIU VORTAC and hold, maintain 6000.

Landing Rwy 35L: Track to AWLEE, cross AWLEE at or above 4000, intercept and execute ILS or LOC Rwy 35L approach. If unable, proceed to IIU VORTAC and hold, maintain 6000.

Landing Rwy 35R: Track to UPSCO, cross UPSCO at or above 3000, intercept and execute ILS or LOC Rwy 35R approach. If unable, proceed to IIU VORTAC and hold, maintain 6000.

PROTOTYPE-NOT FOR NAVIGATION



ARRIVAL ROUTE DESCRIPTION

LIVINGSTON TRANSITION (LVT.MAUDD3):
LONDON TRANSITION (LOZ.MAUDD3):
UNCKL TRANSITION (UNCKL.MAUDD3):
VOLUNTEER TRANSITION (VXV.MAUDD3):

OLD

From over DARBY on track 315° to MAUDD, cross MAUDD at/above 10000 then on track 315° to TUKKR, thence on assigned runway transition

LANDING RWYS 17L/R: From over TUKKR on track 315° to IIU VORTAC, then on track 342° to DLAMP, cross DLAMP at/above 6000, then on track 348° to KAEDN, then on track 347° to STYKR, cross STYKR at 5000, then on track 347°, expect radar vectors to final approach course.

LANDING RWY 29: From over TUKKR on track 315° to IIU VORTAC, then on track 342° to DLAMP, cross DLAMP at/above 6000, then on track 348° to KAEDN, then on track 347° to STYKR, cross STYKR at 5000, then on track 347°, expect radar vectors to final approach course after TUKKR.

LANDING RWY 35L: From over TUKKR on track 275° to RDBRD, cross RDBRD at/above 5000, then on track 348° to AWLEE, cross AWLEE at/above 4000, expect ILS Rwy 35L approach.

LANDING RWY 35R: From over TUKKR on track 288° to PGSUS, cross PGSUS at/above 4000, then on track 348° to UPSCO, cross UPSCO at/above 3000, expect ILS Rwy 35R approach.

LOST COMMUNICATIONS:
Landing Rwy 17L/R: Track to STYKR, cross STYKR at 5000, then proceed direct QARRY, at QARRY, fly heading 260°, maintain 5000, intercept and execute ILS or LOC Rwy 17L approach. If unable, proceed to IIU VORTAC and hold, maintain 6000.

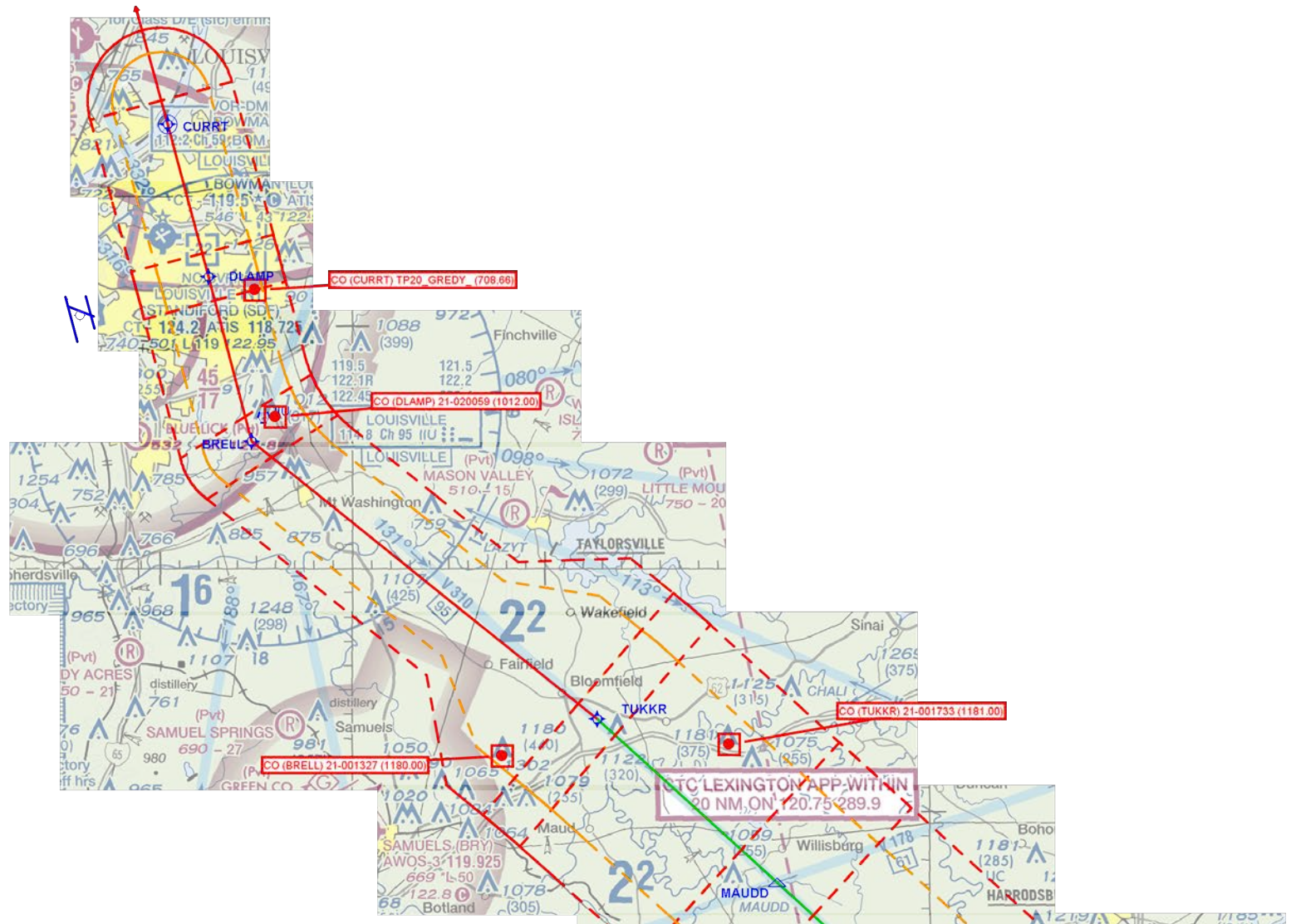
Landing Rwy 29: Track to IIU VORTAC, maintain 6000, then proceed to LAANG LOM, maintain 4000; execute LOC Rwy 29 approach. If unable, proceed to IIU VORTAC and hold, maintain 6000.

Landing Rwy 35L: Track to AWLEE, cross AWLEE at/above 4000, intercept and execute ILS or LOC Rwy 35L approach. If unable, proceed to IIU VORTAC and hold, maintain 6000.

Landing Rwy 35R: Track to UPSCO, cross UPSCO at/above 3000, intercept and execute ILS or LOC Rwy 35R approach. If unable, proceed to IIU VORTAC and hold, maintain 6000.

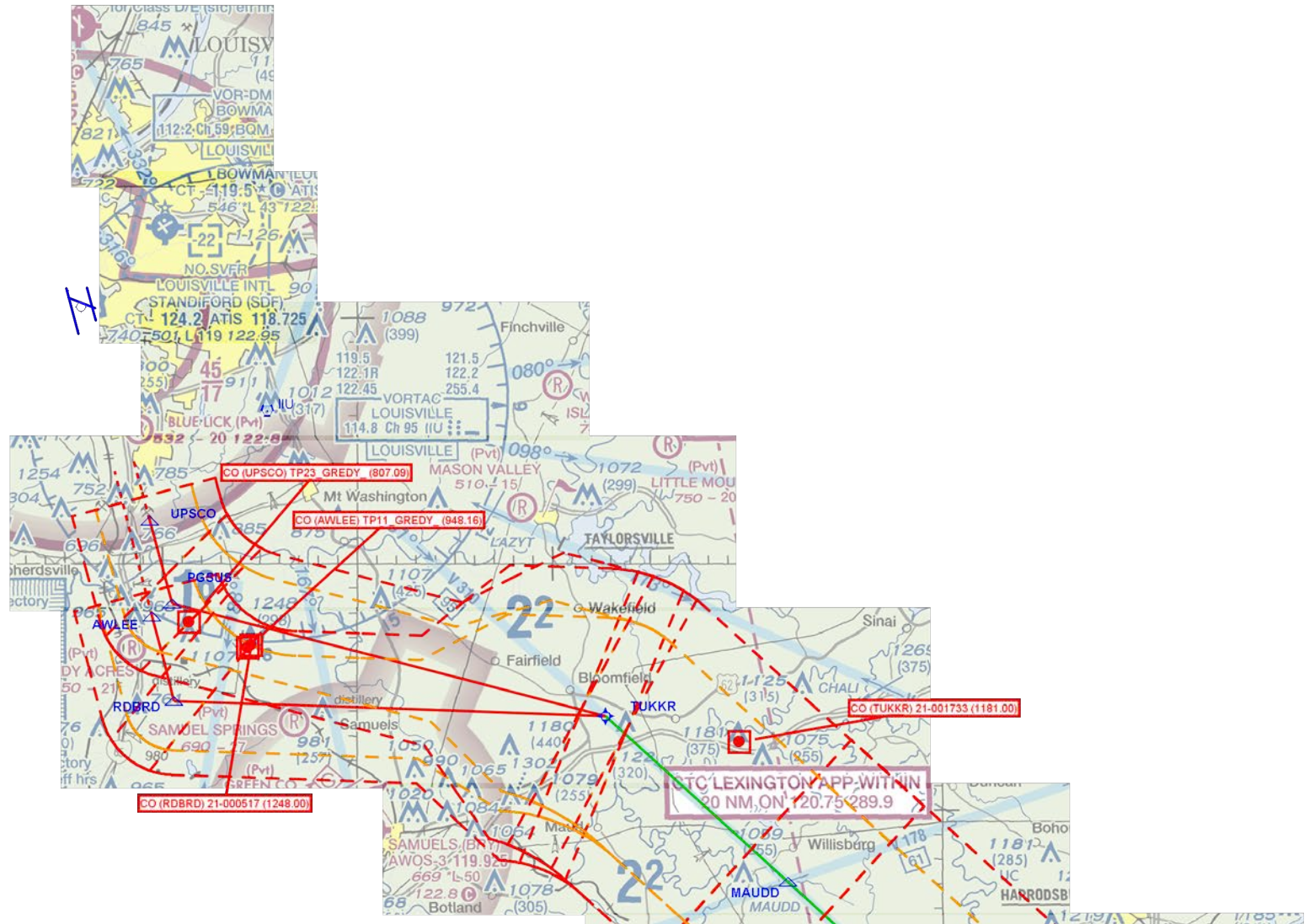
SE-1, 04 FEB 2016 to 03 MAR 2016

SE-1, 04 FEB 2016 to 03 MAR 2016



MAUDD (RNAV)

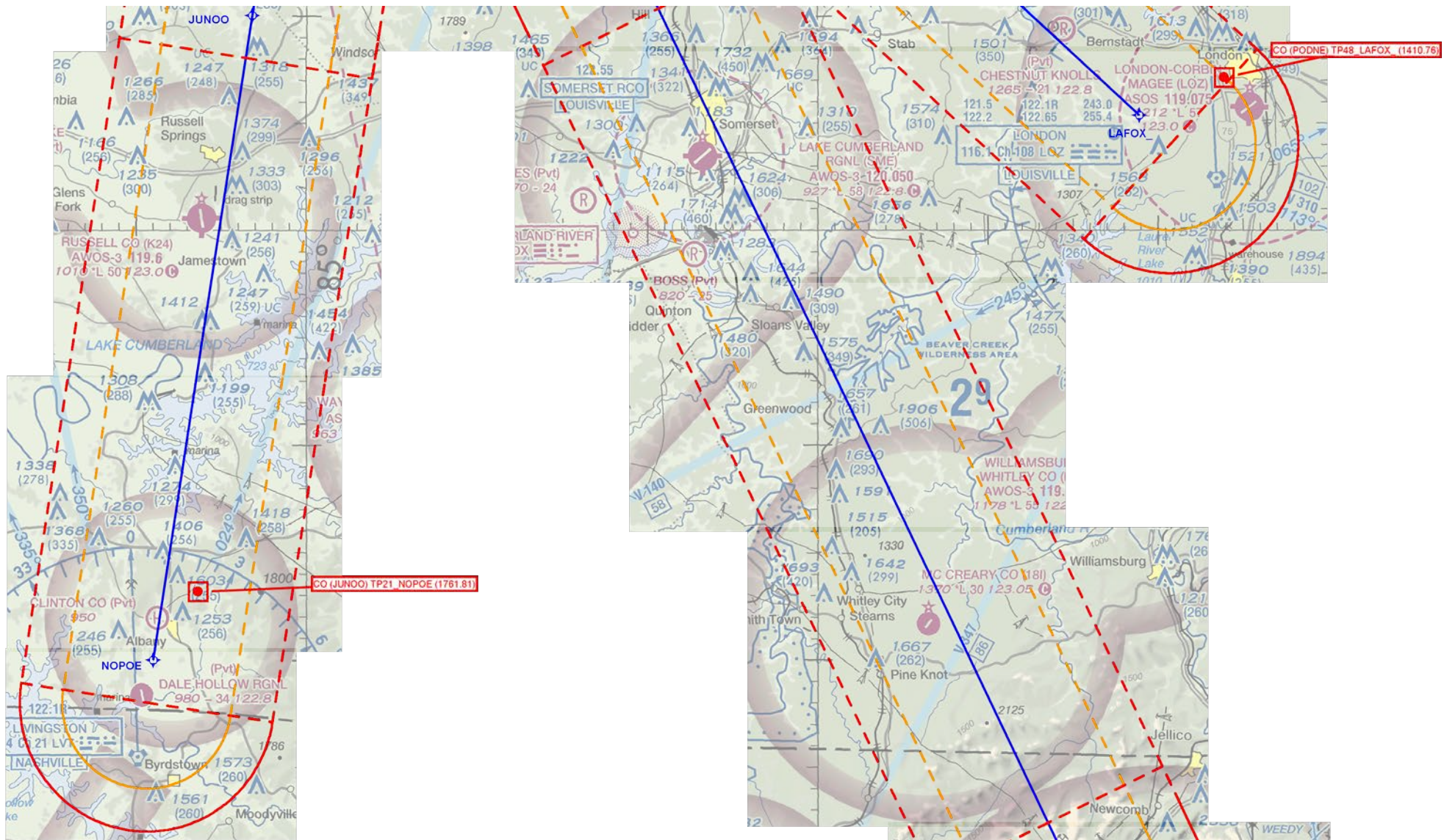
MAP 1 of 6

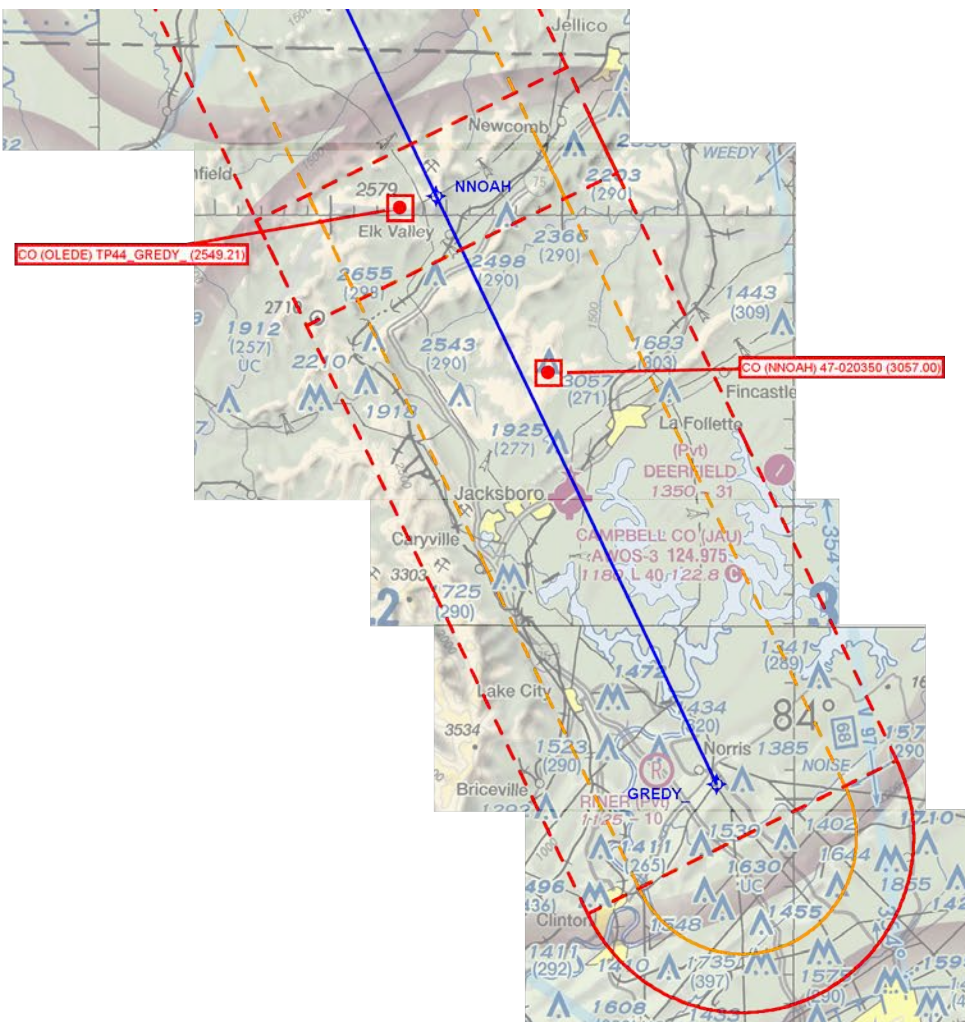


MAUDD (RNAV)

MAP 2 of 6







MAUDD (RNAV)

MAP 6 of 6