

US DEPARTMENT of TRANSPORTATION - FEDERAL AVIATION ADMINISTRATION  
**STANDARD TERMINAL ARRIVAL (STAR)**

Bearings, headings, courses, tracks and radials are magnetic. Elevations and altitudes are in feet. MSL. Altitudes are minimum altitudes unless otherwise indicated.  
Distances are in nautical miles (NM). Graphic depiction attached.

Arrival Name MAUDD (RNAV)	Number FOUR	STAR Computer Code DARBY.MAUDD4	Superseded Number THREE	Dated 18 SEP 2014	Effective Date				
TRANSITION ROUTES:									
Transition Name	Transition Computer Codes	From FIX/NAVAID	To FIX/NAVAID	Mag Course	Distance	MEA	MOCA	MAA	Crossing Altitudes / Fixes
GREDY	GREDY.MAUDD4	GREDY	GREDY						
			NNOAH	337.13	22.35	10000	5100		
			OLEDE	337.25	46.07	10000	4800		
			DARBY	336.91	30.17	10000	2800		
LAFOX	LAFOX.MAUDD4	LAFOX	LAFOX						
			PODNE	315.62	19.48	10000	3700		
			UNCKL	316.09	15.07	10000	2900		
			DARBY	315.58	15.34	10000	2800		
NOPOE	NOPOE.MAUDD4	NOPOE	NOPOE						
			JUNOO	011.80	30.34	10000	3000		
			DARBY	012.29	29.58	10000	2700		
UNCKL	UNCKL.MAUDD4	UNCKL	UNCKL						
			DARBY	315.58	15.34	10000	2800		

ARRIVAL ROUTE DESCRIPTION:

FROM DARBY ON TRACK 315.44/11.58 TO MAUDD (MEA 10000/MOCA 2600), THEN ON TRACK 315.32/10.00 TO TUKKR (MEA 6000/MOCA 2200). THEN ON ASSIGNED RUNWAY TRANSITION.

LANDING RWY 17L/R: FROM TUKKR ON TRACK 311.96/18.21 TO BRELL (MEA 6000/MOCA 2200), THEN ON TRACK 348.48/7.00 TO DLAMP (MEA 6000/MOCA 2100), THEN ON TRACK 347.95/6.50 TO CURRT (MEA 5000/MOCA 2000), THEN ON TRACK 347.95. EXPECT RADAR VECTORS TO FINAL APPROACH COURSE.

LANDING RWY 29: FROM TUKKR ON TRACK 297.84/5.79 TO INDAA (MEA 4000/MOCA 2200), THEN ON TRACK 350.38/6.52 TO VILLI (MEA 3000/MOCA 2200), THEN ON HEADING 320.00. EXPECT RADAR VECTORS TO FINAL APPROACH COURSE.

LANDING RWY 35L: FROM TUKKR ON TRACK 275.18/17.48 TO CROSS RDBRD AT OR ABOVE 5000 (MEA 5000/MOCA 2300), THEN ON TRACK 348.44/3.53 TO CROSS AWLEE AT OR ABOVE 4000 (MEA 4000/MOCA 2200). EXPECT ILS OR LOC RWY 35L.

LANDING RWY 35R: FROM TUKKR ON TRACK 287.71/18.13 TO CROSS PGSUS AT OR ABOVE 4000 (MEA 4000/MOCA 2300), THEN ON TRACK 347.96/3.49 TO CROSS UPSCO AT OR ABOVE 3000 (MEA 3000/MOCA 2100). EXPECT ILS OR LOC RWY 35R.

PROCEDURAL DATA NOTES:

NOTE: RADAR REQUIRED

NOTE: RNAV 1

NOTE: DME/DME/IRU OR GPS REQUIRED

NOTE: TURBOJET AIRCRAFT ONLY

CHART AT MAUDD: "EXPECT CLEARANCE TO CROSS AT 10000."

FIXES AND/OR HOLDING PATTERNS:

CHART HOLDING AT DARBY: SE, RT, 315.44 INBOUND, 10 NM LEGS.

CHART HOLDING AT JUNOO: S, RT, 012.29 INBOUND, 15 NM LEGS.

US DEPARTMENT of TRANSPORTATION - FEDERAL AVIATION ADMINISTRATION  
**STANDARD TERMINAL ARRIVAL (STAR)**

Bearings, headings, courses, tracks and radials are magnetic. Elevations and altitudes are in feet. MSL. Altitudes are minimum altitudes unless otherwise indicated.  
Distances are in nautical miles (NM). Graphic depiction attached.

Arrival Name	Number	STAR Computer Code	Superseded Number	Dated	Effective Date
<b>MAUDD (RNAV)</b>	<b>FOUR</b>	<b>DARBY.MAUDD4</b>	<b>THREE</b>	<b>18 SEP 2014</b>	
CHART HOLDING AT OLEDE: SE, RT, 336.91 INBOUND, 15 NM LEGS.					
CHART HOLDING AT PODNE: SE, RT, 316.09 INBOUND, 15 NM LEGS.					
CHART QARRY AS A STAND-ALONE WAYPOINT.					
CHART IIU VORTAC.					
<u>COMMUNICATIONS:</u>					
LOUISVILLE APP CON.					
STANDIFORD ATIS.					
<u>AIRPORTS SERVED:</u>					
LOUISVILLE INTL-STANDIFORD FIELD, LOUISVILLE, KY					
<u>LOST COMMUNICATIONS PROCEDURE:</u>					
LANDING RWY 35L: TRACK TO AWLEE, CROSS AWLEE AT OR ABOVE 4000, INTERCEPT AND EXECUTE ILS OR LOC RWY 35L APPROACH. IF UNABLE, PROCEED TO IIU VORTAC AND HOLD, MAINTAIN 6000.					
LANDING RWY 35R: TRACK TO UPSCO, CROSS UPSCO AT OR ABOVE 3000, INTERCEPT AND EXECUTE ILS OR LOC RWY 35R APPROACH. IF UNABLE, PROCEED TO IIU VORTAC AND HOLD, MAINTAIN 6000.					
LANDING RWY 17L/R: TRACK TO CURRT, CROSS CURRT AT 5000, THEN PROCEED DIRECT QARRY, AT QARRY FLY HEADING 260, MAINTAIN 5000, INTERCEPT AND EXECUTE ILS OR LOC RWY 17L APPROACH. IF UNABLE, PROCEED TO IIU VORTAC AND HOLD, MAINTAIN 6000.					
LANDING RWY 29: TRACK TO VILLL, CROSS VILLL AT 3000, AT VILLL FLY HEADING 310, INTERCEPT AND EXECUTE LOC RWY 29 APPROACH. IF UNABLE, PROCEED TO IIU VORTAC AND HOLD, MAINTAIN 6000.					
<u>REMARKS:</u>					
DEPICT QARRY OFFSET FROM THE FM LEG AFTER CURRT TO AVOID AIRCREW MISUNDERSTANDING.					
<u>ADDITIONAL FLIGHT DATA:</u>					
DME/DME ASSESSMENT: SAT (RNP 2.0)					
REFERENCE MAGNETIC VARIATION = KSDF 03W/1995					
SPECIAL CHARTING REQUEST: INSERT "TRK" ON THE GRAPHIC DEPICTION ON FM LEG SEGMENT AFTER CURRT.					
CHART AT CURRT: "LANDING RWY 17L/R: EXPECT RADAR VECTORS TO FINAL APPROACH COURSE AFTER CURRT."					
CHART AT VILLL: "LANDING RWY 29: EXPECT RADAR VECTORS TO FINAL APPROACH COURSE AFTER VILLL."					

US DEPARTMENT of TRANSPORTATION - FEDERAL AVIATION ADMINISTRATION  
**STANDARD TERMINAL ARRIVAL (STAR)**

Bearings, headings, courses, tracks and radials are magnetic. Elevations and altitudes are in feet. MSL. Altitudes are minimum altitudes unless otherwise indicated.  
Distances are in nautical miles (NM). Graphic depiction attached.

Arrival Name <b>MAUDD (RNAV)</b>	Number <b>FOUR</b>	STAR Computer Code <b>DARBY.MAUDD4</b>	Superseded Number <b>THREE</b>	Dated <b>18 SEP 2014</b>	Effective Date
<u>FLIGHT INSPECTED BY:</u>					
Name		Organization	Date	Signature	
<u>DEVELOPED BY:</u>					
THOMAS DURY, MANAGER, AIRSPACE AND PROCEDURES		INDIANAPOLIS ARTCC			
Name		Organization	Date	Signature	
<u>APPROVED BY:</u>					
MARLON J. ROBINSON, MANAGER		AJV-5410			
Name		Organization	Date	Signature	

CHANGES:

1. ALTITUDE RESTRICTIONS REMOVED FROM MAUDD AND DLAMP.
2. PILOT PLANNING GRAPHIC CHART NOTE AT MAUDD REVISED.
3. LVT ENROUTE TRANSITION DELETED.
4. NOPOE ENROUTE TRANSITION CREATED.
5. VXV ENROUTE TRANSITION DELETED.
6. GREDY ENROUTE TRANSITION CREATED.
7. LOZ ENROUTE TRANSITION DELETED.
8. LAFOX ENROUTE TRANSITION CREATED.
9. IIU VORTAC REMOVED FROM RWY 17L/R TRANSITION.
10. BRELL ADDED TO RWY 17L/R TRANSITION.
11. JUNOO WITH PUBLISHED HOLDING PATTERN ADDED TO NOPOE ENROUTE TRANSITION.
12. OLEDE WITH PUBLISHED HOLDING PATTERN ADDED TO GREDY ENROUTE TRANSITION.
13. PODNE WITH PUBLISHED HOLDING PATTERN ADDED TO LAFOX ENROUTE TRANSITION.
14. NEW RWY 29 TRANSITION CREATED WITH INDAA AND VILLL WAYPOINTS.
15. PILOT PLANNING GRAPHIC CHART NOTES FOR LANDING RWY 17L/R/29 REVISED.
16. LOST COMMUNICATIONS PROCEDURES FOR LANDING RWY 17L/R/29 REVISED TO REFLECT NEW RWY 29 AND REVISED RWY 17L/R TRANSITIONS.
17. CURRT ADDED TO RWY 17L/R TRANSITION.
18. KAEDN REMOVED FROM RWY 17L/R TRANSITION.
19. STYKR REMOVED FROM RWY 17L/R TRANSITION.
20. LAANG LOM STAND-ALONE FIX REMOVED.

REASONS:

- 1-2. CORRECTIVE ACTION REPORT AND AIR TRAFFIC SAFETY ACTION PROGRAM REPORT RESOLUTION..
- 3-10. GROUND-BASED NAVAIDS REMOVED FROM PROCEDURE.
- 11-13. REQUESTED BY ATC FOR TRAFFIC MANAGEMENT.

US DEPARTMENT of TRANSPORTATION - FEDERAL AVIATION ADMINISTRATION  
**STANDARD TERMINAL ARRIVAL (STAR)**

Bearings, headings, courses, tracks and radials are magnetic. Elevations and altitudes are in feet. MSL. Altitudes are minimum altitudes unless otherwise indicated.

Distances are in nautical miles (NM). Graphic depiction attached.

Arrival Name	Number	STAR Computer Code	Superseded Number	Dated	Effective Date
<b>MAUDD (RNAV)</b>	<b>FOUR</b>	<b>DARBY.MAUDD4</b>	<b>THREE</b>	<b>18 SEP 2014</b>	

14. EFFICIENCY FOR RWY 29 ARRIVALS.

15-16. RUNWAY ARRIVAL ROUTES REVISED.

17-19. PROCEDURE DISCONNECTED FROM RNP APPROACHES.

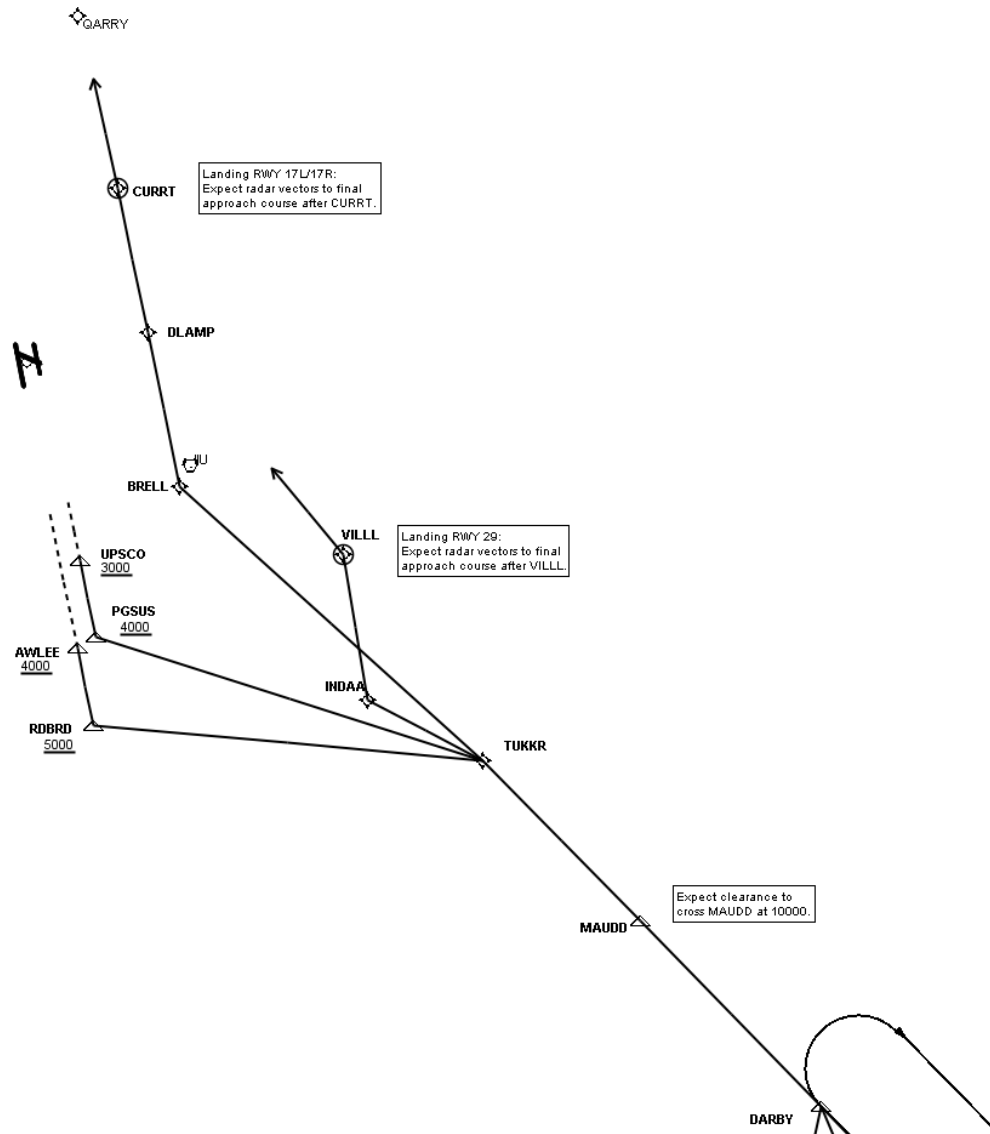
20. NAVAID NOT RELEVANT TO PROCEDURE.

US DEPARTMENT of TRANSPORTATION - FEDERAL AVIATION ADMINISTRATION  
**STANDARD TERMINAL ARRIVAL (STAR)**

Bearings, headings, courses, tracks and radials are magnetic. Elevations and altitudes are in feet. MSL. Altitudes are minimum altitudes unless otherwise indicated.

Distances are in nautical miles (NM). Graphic depiction attached.

Arrival Name	Number	STAR Computer Code	Superseded Number	Dated	Effective Date
MAUDD (RNAV)	FOUR	DARBY.MAUDD4	THREE	18 SEP 2014	
Graphic Depiction 1					



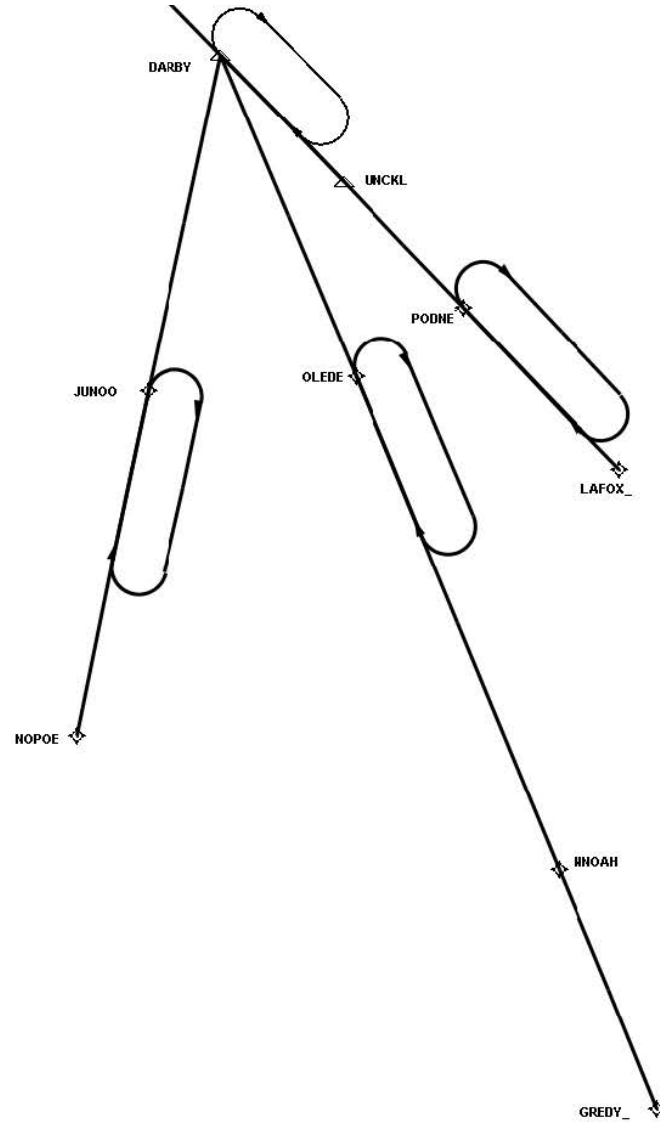
US DEPARTMENT of TRANSPORTATION - FEDERAL AVIATION ADMINISTRATION  
**STANDARD TERMINAL ARRIVAL (STAR)**

Bearings, headings, courses, tracks and radials are magnetic. Elevations and altitudes are in feet. MSL. Altitudes are minimum altitudes unless otherwise indicated.

Distances are in nautical miles (NM). Graphic depiction attached.

Arrival Name	Number	STAR Computer Code	Superseded Number	Dated	Effective Date
MAUDD (RNAV)	FOUR	DARBY.MAUDD4	THREE	18 SEP 2014	

Graphic Depiction 2



## STAR (DATA RECORD)

Arrival Name MAUDD (RNAV)		Number FOUR		STAR Computer Code DARBY.MAUDD4		Superseded Number THREE		Dated 18 SEP 2014	Effective Date
FIX/NAVAID	LAT/LONG	C	FO/FB	LEG TYPE	TC	DIST (NM)	ALTITUDE	SPEED	REMARKS
En Route Transition									
GREDY	361030.98N / 0840321.09W	Y		IF					GREDY.MAUDD4
NNOAH	363038.43N / 0841526.77W	Y	FB	TF	334.13	22.35			
OLEDE	371209.00N / 0844030.00W	Y	FB	TF	334.25	46.07			
DARBY	373915.59N / 0845712.37W	Y	FB	TF	333.91	30.17			
En Route Transition									
LAFOX	370523.92N / 0841110.72W	Y		IF					LAFOX.MAUDD4
PODNE	371835.00N / 0842909.00W	Y	FB	TF	312.62	19.48			
UNCKL	372852.88N / 0844258.79W	Y	FB	TF	313.09	15.07			
DARBY	373915.59N / 0845712.37W	Y	FB	TF	312.58	15.34			
En Route Transition									
NOPOE	364000.93N / 0850901.49W	Y		IF					NOPOE.MAUDD4
JUNOO	371002.00N / 0850313.00W	Y	FB	TF	008.80	30.34			
DARBY	373915.59N / 0845712.37W	Y	FB	TF	009.29	29.58			
En Route Transition									
UNCKL	372852.88N / 0844258.79W	Y		IF					UNCKL.MAUDD4
DARBY	373915.59N / 0845712.37W	Y	FB	TF	312.58	15.34			
Common Route									
DARBY	373915.59N / 0845712.37W	Y		IF					DARBY .MAUDD4
MAUDD	374704.66N / 0850759.38W	Y	FB	TF	312.44	11.58			
TUKKR	375348.71N / 0851719.86W	Y	FB	TF	312.32	10.00			
Runway Transition									
TUKKR	375348.71N / 0851719.86W	Y		IF					
BRELL	380514.95N / 0853515.79W	Y	FB	TF	308.96	18.21			
DLAMP	381201.95N / 0853729.40W	Y	FB	TF	345.48	07.00			

QUALITY  
17  
CHECKED

QUALITY  
17  
CHECKED

**STAR (DATA RECORD)**

Arrival Name MAUDD (RNAV)		Number FOUR		STAR Computer Code DARBY.MAUDD4		Superseded Number THREE		Dated 18 SEP 2014	Effective Date
FIX/NAVAID	LAT/LONG	C	FO/FB	LEG TYPE	TC	DIST (NM)	ALTITUDE	SPEED	REMARKS
CURRT	381818.96N / 0853938.03W	Y	FO	TF	344.95	06.50			
KSDF:RWY 17B				FM	344.95				RECOMMENDED NAVAID: RID VORTAC.
Runway Transition									
TUKKR	375348.71N / 0851719.86W	Y		IF					
INDAA	375614.68N / 0852358.51W	Y	FB	TF	294.84	05.79			
VILLL	380236.83N / 0852546.75W	Y	FO	TF	347.38	06.52			
KSDF:RWY 29				VM	317.00				
Runway Transition									
TUKKR	375348.71N / 0851719.86W	Y		IF					
RDBRD	375426.53N / 0853924.36W	Y	FB	TF	272.18	17.48	AT/ABOVE 5000		
AWLEE	375751.97N / 0854031.76W	Y	FB	TF	345.44	03.53	AT/ABOVE 4000		
KSDF:RWY 35L									
Runway Transition									
TUKKR	375348.71N / 0851719.86W	Y		IF					
PGSUS	375823.03N / 0853930.25W	Y	FB	TF	284.71	18.13	AT/ABOVE 4000		
UPSCO	380145.69N / 0854039.09W	Y	FB	TF	344.96	03.49	AT/ABOVE 3000		
KSDF:RWY 35R									

