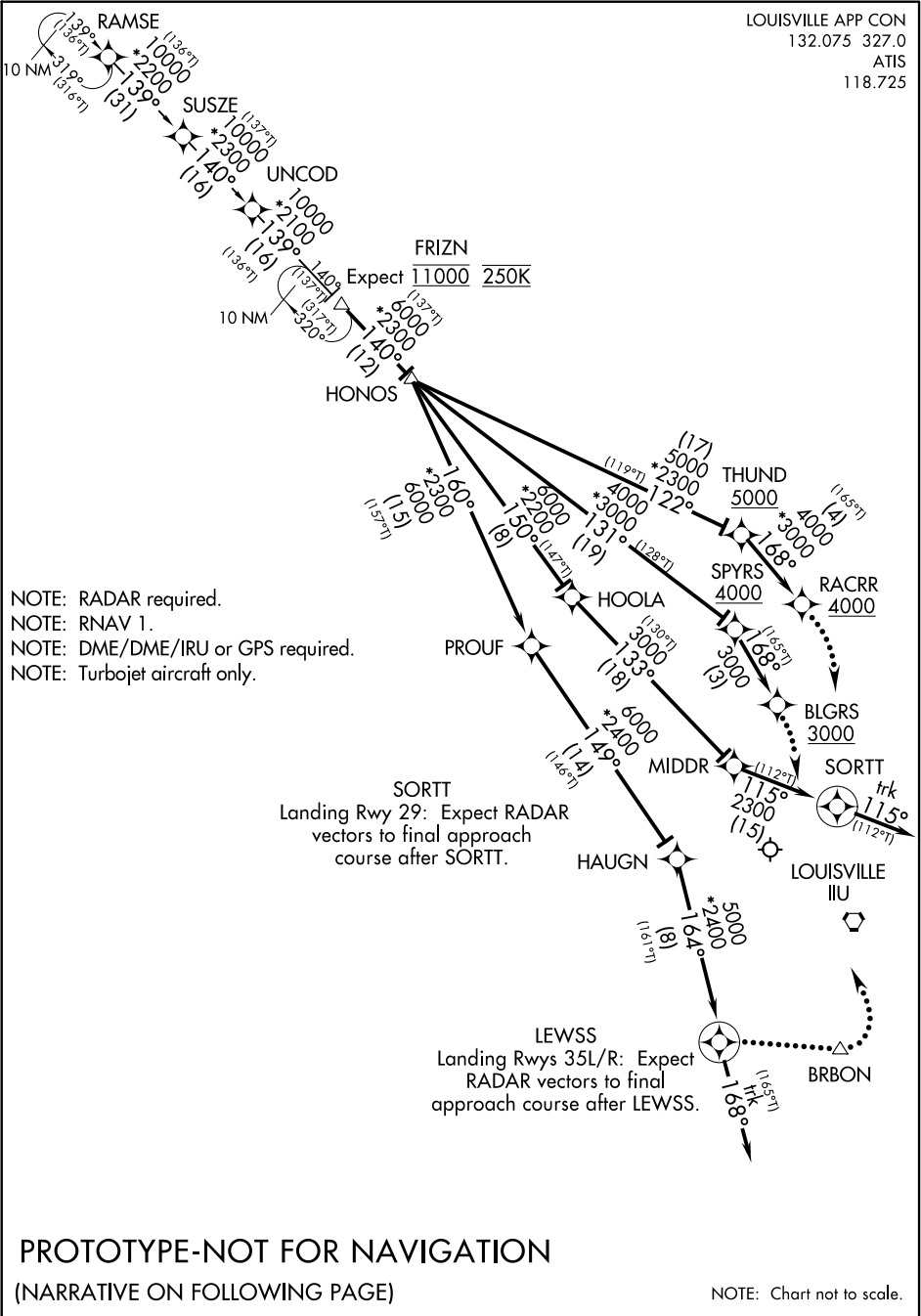
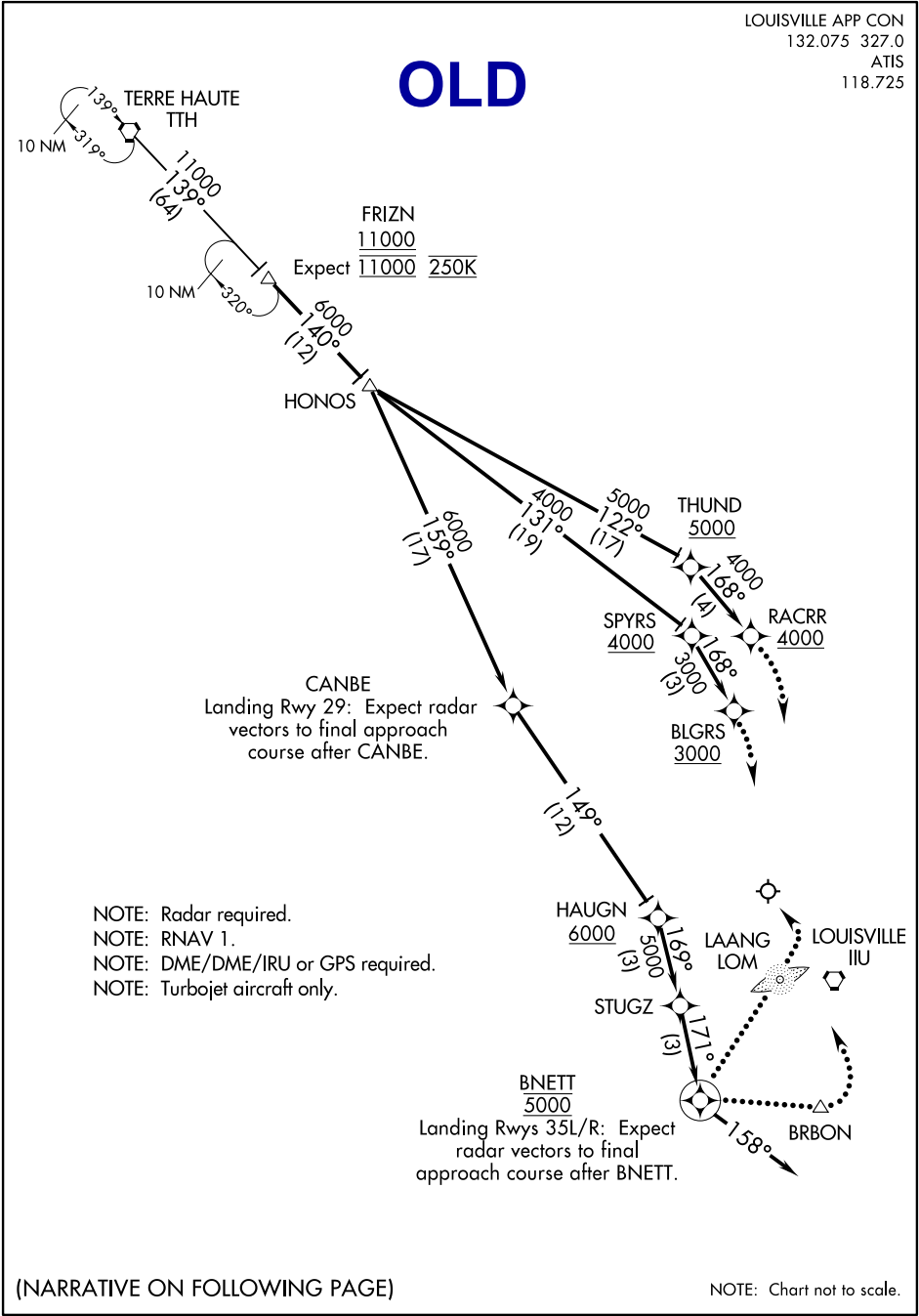


Flight Procedure Tracking Form		Action: FLIGHT CHECK	Task Type: STAR	Date Open: 04/30/2015	Task #: 2014120412223401003	Request #: 20141204122234
Procedure: STAR FRIZN (RNAV) THREE LOUISVILLE KY KSDF			Airport ID: KSDF	Airport: LOUISVILLE INTL- STANDIFORD FIELD		Reimbursable #: NO
City: LOUISVILLE	ST: KY	GPS #:		Estimated Chart Date: 07/21/2016		FICO #:
Fac ID: N/A		Fac. Type:			Specialist: JEFF ANDERSON	
Procedure Review						
	Rec'd	Rel'd	Full Name		Comments	
Lead:	01/08/2016					
QA:						
Liaison:						
Procedure Comments:			ENROUTE	Remark Type: INFORMATION		
CONTACT: JULIE MORGAN, AJV-352 LEAD, 405-954-8586						





FRIZN TWO ARRIVAL (RNAV)



SE-1, 04 FEB 2016 to 03 MAR 2016

SE-1, 04 FEB 2016 to 03 MAR 2016

FRIZN THREE ARRIVAL (RNAV)

ARRIVAL ROUTE DESCRIPTION

RAMSE TRANSITION (RAMSE.FRIZN3)

From over FRIZN on track 140° to HONOS, thence on assigned runway transition . . .

LANDING RWY 17L: From over HONOS on track 122° to cross THUND at/above 5000, then on track 168° to cross RACRR at/above 4000. Expect ILS or LOC Rwy 17L.

LANDING RWY 17R: From over HONOS on track 131° to cross SPYRS at/above 4000, then on track 168° to cross BLGRS at/above 3000. Expect ILS or LOC Rwy 17R.

LANDING RWY 29: From HONOS on track 150° to HOOLA, then on track 133° to MIDDR, then on track 115° to SORTT, then on track 115°. Expect RADAR vectors to final approach course.

LANDING RWYS 35L/R: From HONOS on track 160° to PROUF, then on track 149° to HAUGN, then on track 164° to LEWSS, then on track 168°. Expect RADAR vectors to final approach course.

LOST COMMUNICATIONS

Landing Rwy 17L: Track to RACRR, cross RACRR at/above 4000, intercept and execute ILS or LOC Rwy 17L approach. If unable, proceed to IIIU VORTAC and hold, maintain 6000.

Landing Rwy 17R: Track to BLGRS, cross BLGRS at/above 3000, intercept and execute ILS or LOC Rwy 17R approach. If unable, proceed to IIIU VORTAC and hold, maintain 6000.

Landing Rwy 29: Track to SORTT, maintain 3000, at SORTT fly heading 210°, maintain 3000, intercept and execute LOC RWY 29 approach. If unable, proceed to IIIU VORTAC and hold, maintain 6000.

Landing Rwy 35L/R: Track to LEWSS, cross LEWSS at 5000, then proceed direct BRBON, maintain 5000, execute ILS OR LOC RWY 35L approach. If unable proceed to IIIU VORTAC and hold, maintain 6000.

PROTOTYPE-NOT FOR NAVIGATION

ARRIVAL ROUTE DESCRIPTION

OLD

TERRE HAUTE TRANSITION (TTH.FRIZN2):

From over FRIZN on track 140° to HONOS, thence on assigned runway transition

LANDING RWY 17L: From over HONOS on track 122° to THUND, cross THUND at/above 5000, then on track 168° to RACRR, cross RACRR at/above 4000. Expect ILS Rwy 17L approach.

LANDING RWY 17R: From over HONOS on track 131° to SPYRS, cross SPYRS at/above 4000, then on track 168° to BLGRS, cross BLGRS at/above 3000. Expect ILS Rwy 17R approach.

LANDING RWY 29: From over HONOS on track 159° to CANBE, then on track 149° to HAUGN, cross HAUGN at/above 6000, then on track 169° to STUGZ, then on track 171° to BNETT, cross BNETT at 5000, then on track 158°. Expect radar vectors to final approach course after CANBE.

LANDING RWYS 35L/R: From over HONOS on track 159° to CANBE, then on track 149° to HAUGN, cross HAUGN at/above 6000, then on track 169° to STUGZ, then on track 171° to BNETT, cross BNETT at 5000, then on track 158°. Expect radar vectors to final approach course.

LOST COMMUNICATIONS:

Landing Rwy 17L: Track to RACRR, cross RACRR at/above 4000, intercept and execute ILS or LOC Rwy 17L approach. If unable, proceed to IIU VORTAC and hold, maintain 6000.

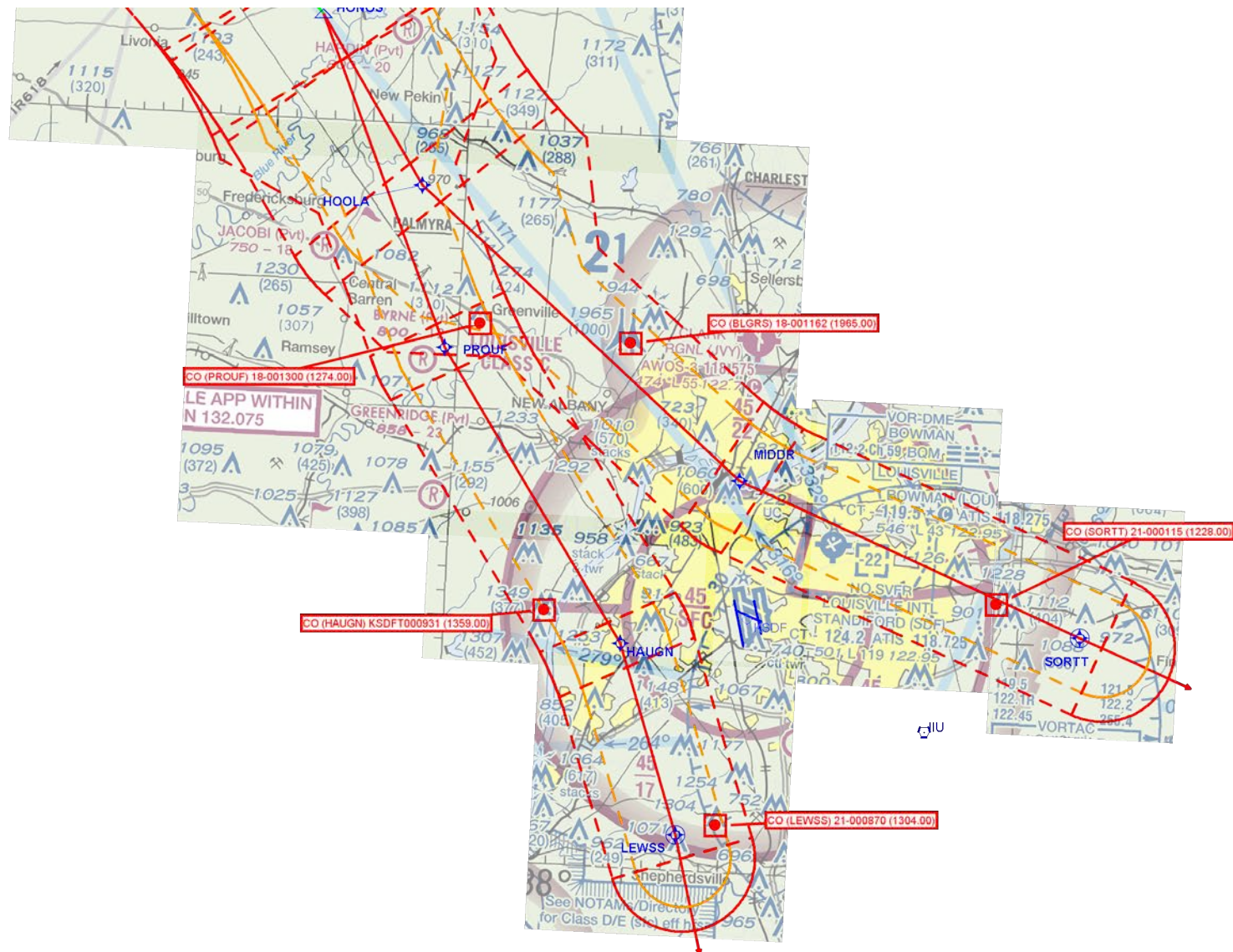
Landing Rwy 17R: Track to BLGRS, cross BLGRS at/above 3000, intercept and execute ILS or LOC Rwy 17R approach. If unable, proceed to IIU VORTAC and hold, maintain 6000.

Landing Rwy 29: Track to BNETT, cross BNETT at 5000; proceed direct LAANG LOM, maintain 5000, execute LOC Rwy 29 approach, if unable proceed to IIU VORTAC and hold, maintain 6000.

Landing Rwy 35L/R: Track to BNETT, cross BNETT at 5000; proceed direct BRBON, maintain 5000, execute ILS or LOC Rwy 35L approach, if unable, proceed to IIU VORTAC and hold, maintain 6000.

SE-1, 04 FEB 2016 to 03 MAR 2016

SE-1, 04 FEB 2016 to 03 MAR 2016



FRIZN (RNAV)

MAP 1 of 4



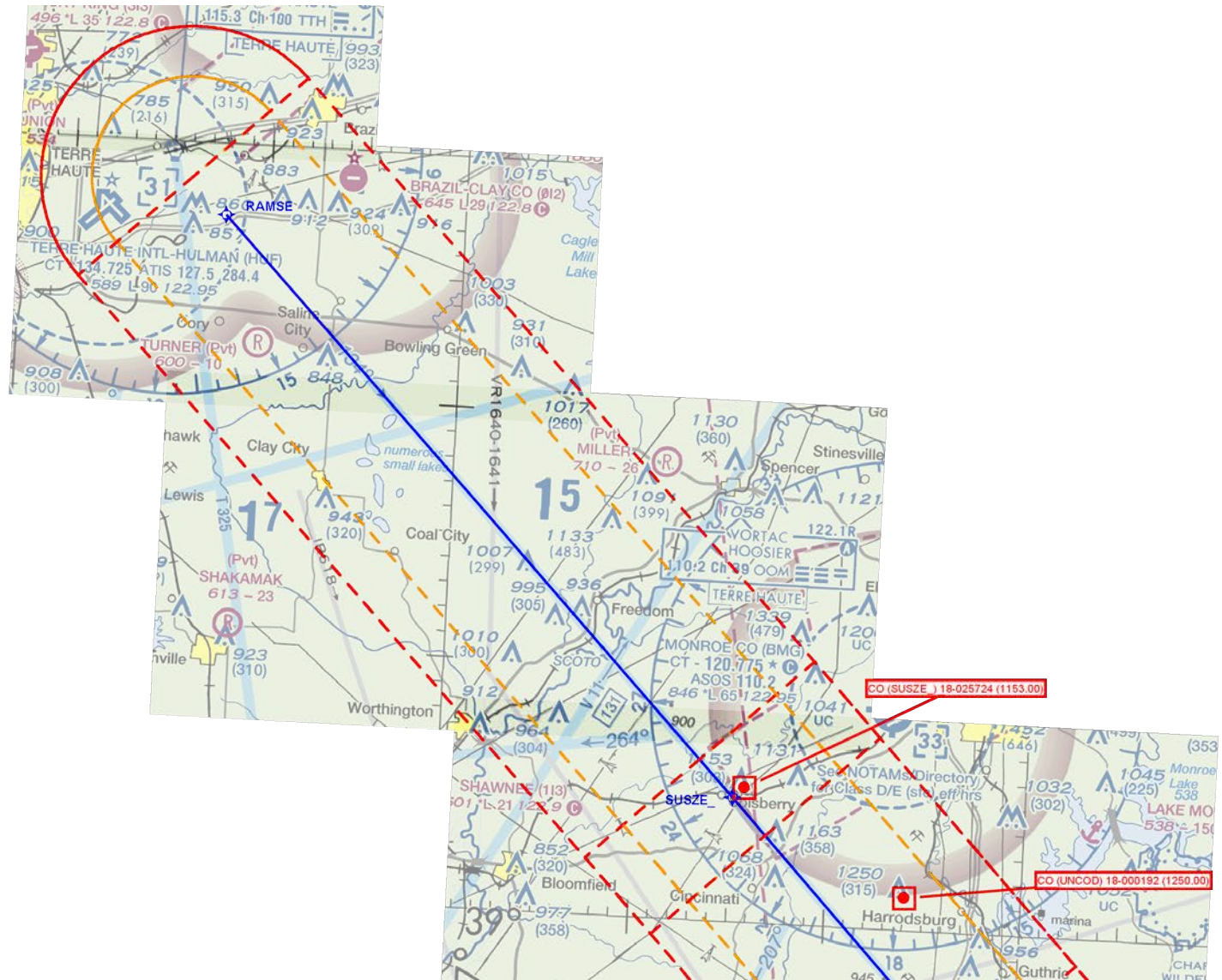
FRIZN (RNAV)

MAP 2 of 4



FRIZN (RNAV)

MAP 3 of 4



FRIZN (RNAV)

MAP 4 of 4