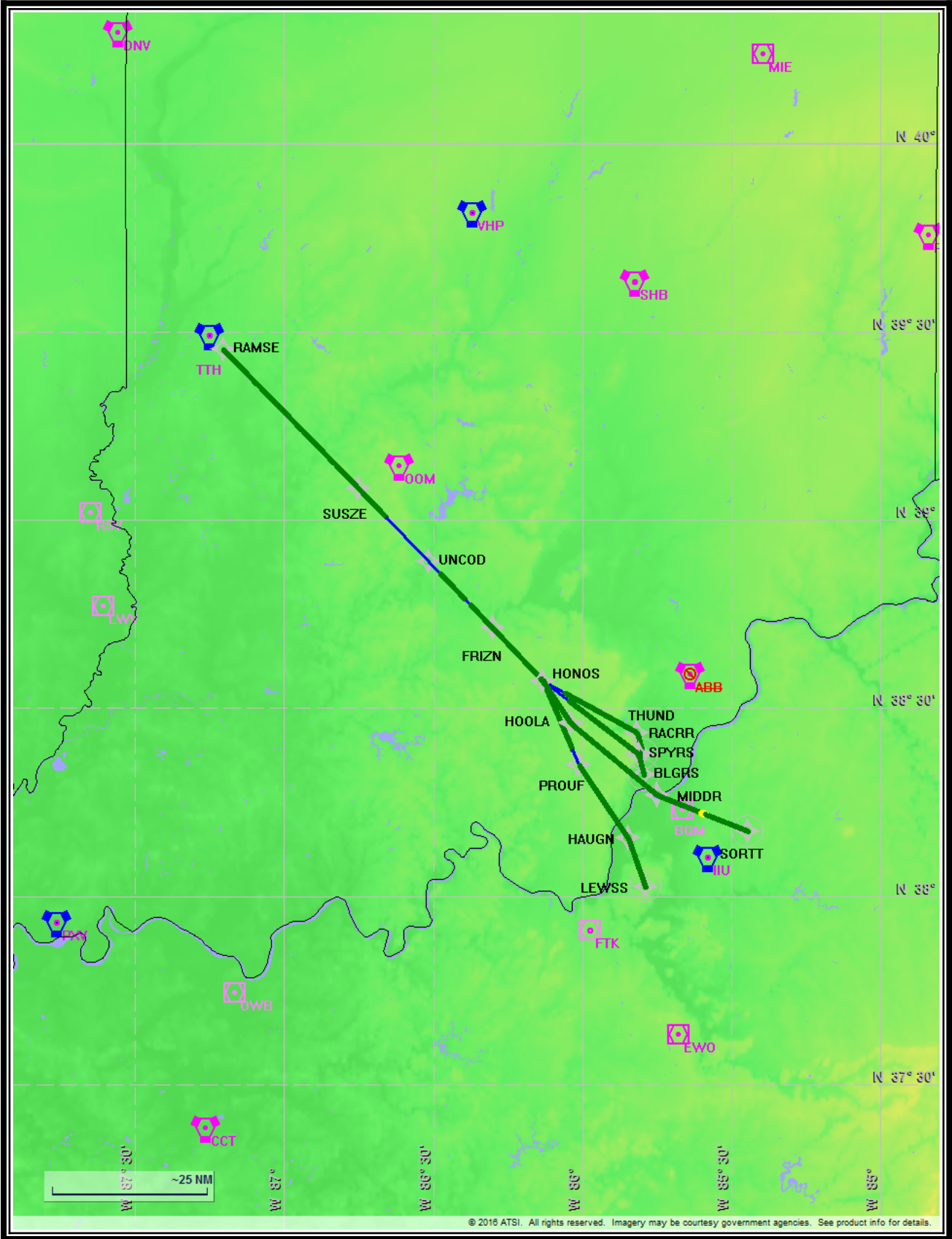


**Name:** MARK SCHOENHOFF  
**Project Name:** KSDF FRIZN3 STAR  
**Output File:** KSDF FRIZN3 STAR  
HONOS BLGRS  
20160201\_1028  
**Software:** RNAV-Pro™  
**Version:** 2.39g  
**Date/Time:** 2/1/2016 10:31:15 AM  
**Input File:** [KSDF FRIZN3 STAR  
HONOS BLGRS  
20151229\\_0938.txt](#)  
**Databases:** AIRNAV Date: 11/30/2015  
CIFP Date: 9/18/2015  
DTED® (MAX) Date: 2002

## Results Summary:

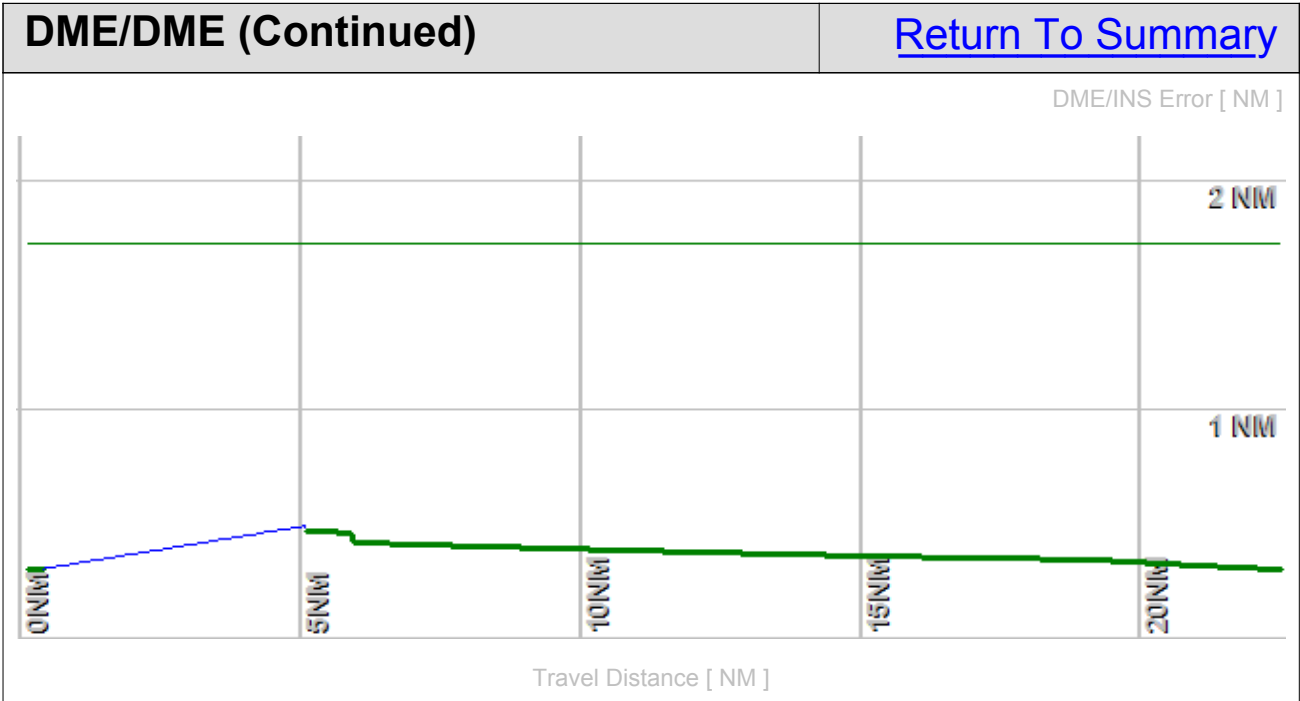
<b>Flyability</b>	✓	
<b>DME/DME</b>	✓	No Critical DMEs Exist
<b>Radars</b>	?	
<b>Comms</b>	?	
<b>TERPS</b>	?	



Flight Plan					<a href="#">Return To Summary</a>		
Name	Type	Lat/Lon	Alt [ft]	VNAV Mode	IAS [Kts]	Turn Type	Leg Type
HONOS	WP	N 38° 34' 19.24" W 86° 7' 55.74"	6000.0	Step	180.0	Fly By	TF
SPYRS	WP	N 38° 22' 39.30" W 85° 48' 42.51"	4000.0	Step	180.0	Fly By	TF
BLGRS	WP	N 38° 19' 16.28" W 85° 47' 35.24"	3000.0	Step	180.0	Fly Over	TF

Flyability		<a href="#">Return To Summary</a>
Settings:	<b>Flight Type:</b> Arrival	
	<b>Selected Airport:</b> KSDF	
	<b>Aircraft Category:</b> Cat D	
	<b>Climb Gradient:</b> <i>None assigned</i>	
	<b>Ground Speeds:</b> Table: 200.0 Kts up to 11000.0 ft 240.0 Kts up to 18000.0 ft 260.0 Kts up to 24000.0 ft 340.0 Kts up to 99900.0 ft  <b>Wind Settings:</b> <i>None assigned</i> <b>Descent During a Turn:</b> Allowed <b>VNAV Mode:</b> Flight Plan	
Entire track is fly-able		

DME/DME		<a href="#">Return To Summary</a>
<b>Settings:</b>	<p><b>RNP:</b> 2.0</p> <p><b>Flight Mode:</b> Manual</p> <p><b>Line of Sight (DTED Level 0 Max):</b> Evaluated</p> <p><b>DME Restrictions:</b> Evaluated</p> <p><b>Inertial Drift:</b> Enabled</p> <p>    <b>Initial Drift:</b> 0.558 NM</p> <p>    <b>INS Drift Rate:</b> 8.000 NM/Hour</p> <p><b>Range Mode:</b> OSV</p> <p><b>Co-Frequencies:</b> Evaluated</p> <p><b>RNP Edges:</b> Evaluated</p> <p><b>Min DME Range:</b> 3.0 NM</p> <p><b>Allowed Gap Length:</b> 4.0 NM</p> <p><b>DME Types:</b> VOR/DME, VORTAC, Standalone, and User</p> <p><b>DME Include Angles:</b> 30 to 150</p> <p><b>Critical DMEs:</b> Allowed</p> <p><b>DoD Facilities:</b> Not included</p> <p><b>Foreign Facilities:</b> Not included</p> <p><b>Low DMEs:</b> Included</p> <p><b>Terminal DMEs:</b> Included</p> <p><b>Flight Check DMEs:</b> Selected</p> <p><b>Higher Altitudes:</b> Evaluated</p> <p><b>Near Maximum Altitude:</b> Evaluated</p>	
<p><b>Total Number of DMEs Used:</b> 4</p> <p>Maximum DME Error: 0.494 NM.</p> <p>No Critical DMEs were found.</p> <p><b>Available DMEs:</b> IIU, SHB, CVG, FTK, BQM</p> <p><b>Disabled DMEs:</b> ABB</p>		



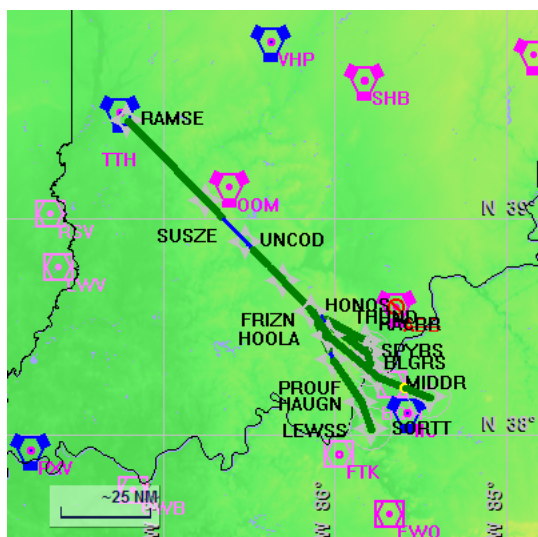
DME/DME (Continued)						<a href="#">Return To Summary</a>			
DMEs Used									
#	Name	Lat/Lon/MAGVAR	Range	Source	Critical	Err. [NM]	Status	Time	Distance
1	IIU	N 38° 6' 12.47" W 84° 34' 38.77" 01 E	H + <a href="#">ESV</a>	User	NO	0.583	Enabled	5.2%	5.2%
2	CVG	N 39° 0' 57.53" W 84° 42' 12.05" 04 W	L + <a href="#">ESV</a>	User	NO	0.539	Enabled	1.5%	1.5%
3	FTK	N 37° 54' 25.98" W 85° 58' 21.23" 01 W	T + <a href="#">ESV</a>	User	NO	1.192	Enabled	77.5%	77.5%
4	BQM	N 38° 13' 48.79" W 85° 39' 53.08" 04 W	T	Database	NO	0.494	Enabled	73.8%	73.8%
	Total Coverage							79.0%	79.0%
Flight Check DME Selection									
Distance [NM]		Selected DMEs						Alternate	
0.0		CVG	IIU	SHB	FTK	BQM			
18.4		IIU	FTK	BQM					
Inertial Drift Segments									
#	Start Location			End Location			Length [NM]		
1	N 38° 34' 4.95" W 86° 7' 32.08"			N 38° 31' 13.98" W 86° 2' 49.28"			4.7		
VOR: ABB				Available from N 38° 34' 4.95" W 86° 7' 32.08" to N 38° 31' 13.98" W 86° 2' 49.28"					
VOR: BQM				Available from N 38° 34' 4.95" W 86° 7' 32.08" to N 38° 31' 13.98" W 86° 2' 49.28"					
VOR: IIU				Available from N 38° 34' 4.95" W 86° 7' 32.08" to N 38° 31' 13.98" W 86° 2' 49.28"					
VOR: SDF				Available from N 38° 34' 4.95" W 86° 7' 32.08" to N 38° 31' 13.98" W 86° 2' 49.28"					
VOR: FTK				Available from N 38° 33' 50.71" W 86° 7' 8.50" to N 38° 31' 13.98" W 86° 2' 49.28"					
VOR: FTK				Available from N 38° 33' 50.71" W 86° 7' 8.50" to N 38° 31' 13.98" W 86° 2' 49.28"					
VOR: MYS				Available from N 38° 33' 3.86" W 86° 5' 50.95" to N 38° 31' 13.98" W 86° 2' 49.28"					

Available DMEs by Waypoints		<a href="#">Return To Summary</a>
Waypoint Before	Waypoint After	DME List
HONOS	SPYRS	FTK, CVG, SHB, IIU, and BQM
SPYRS	BLGRS	FTK, IIU, and BQM



User Data					<a href="#">Return To Summary</a>		
User Data Files							
#	File Name						
1	KSDF FRIZN STAR.udt						
User DMEs							
#	Name	Lat/Lon/MAGVAR	Range	Elevation [ft]	Frequency	Replaces	Status
1	IIU	N 38° 6' 12.47" W 85° 34' 38.77" 01 E	H	720.0	114.80	IIU	Used
		ESV:	Bearing [True]: 310.0° to 320.0° Bearing [Mag]: 309.0° to 319.0°		Arc Distance: Out to 98.0 NM Altitude: 9500.0 to 16500.0 ft		
2	PXV	N 37° 55' 41.95" W 87° 45' 44.56" 03 E	H	384.3	113.30	PXV	Not Used
		ESV:	Bearing [True]: 14.0° to 65.0° Bearing [Mag]: 11.0° to 62.0°		Arc Distance: Out to 98.0 NM Altitude: 9500.0 to 15000.0 ft		
3	TTH	N 39° 29' 20.19" W 87° 14' 56.47" 02 E	H	606.1	115.30	TTH	Not Used
		ESV:	Bearing [True]: 132.0° to 140.0° Bearing [Mag]: 130.0° to 138.0°		Arc Distance: Out to 78.0 NM Altitude: 9500.0 to 16000.0 ft		
4	VHP	N 39° 48' 53.02" W 86° 22' 2.88" 01 E	H	823.0	116.30	VHP	Not Used
		Restriction:	Bearing [True]: 313.0° to 347.0° Bearing [Mag]: 312.0° to 346.0°		Distance: Beyond 25.0 NM Altitude: Below 4000.0 ft		
		ESV:	Bearing [True]: 169.0° to 178.0° Bearing [Mag]: 168.0° to 177.0°		Arc Distance: Out to 78.0 NM Altitude: 9500.0 to 16000.0 ft		
		ESV:	Bearing [True]: 209.0° to 250.0° Bearing [Mag]: 208.0° to 249.0°		Arc Distance: Out to 50.0 NM Altitude: 9500.0 to 16000.0 ft		
		ESV:	Bearing [True]: 142.0° to 204.0° Bearing [Mag]: 141.0° to 203.0°		Arc Distance: Out to 63.0 NM Altitude: 4000.0 to 18000.0 ft		
5	OKK	N 40° 31' 40.00" W 86° 3' 28.81" 00 E	H	826.6	113.50	OKK	Not Used
		Restriction:	Bearing [True]: 171.0° to 229.0° Bearing [Mag]: 171.0° to 229.0°		Distance: Beyond 35.0 NM Altitude: Below 2400.0 ft		
		Restriction:	Bearing [True]: 171.0° to 229.0° Bearing [Mag]: 171.0° to 229.0°		Distance: Beyond 35.0 NM Altitude: Below 2400.0 ft		
		ESV:	Bearing [True]: 191.0° to 223.0° Bearing [Mag]: 191.0° to 223.0°		Arc Distance: Out to 101.0 NM Altitude: 10000.0 to 18000.0 ft		
6	FLM	N 38° 38' 57.99" W 84° 18' 38.17" 04 W	H	808.5	117.00	FLM	Not Used
		ESV:	Bearing [True]: 271.0° to 281.0° Bearing [Mag]: 275.0° to 285.0°		Arc Distance: Out to 105.0 NM Altitude: 10000.0 to 18000.0 ft		
7	SHB	N 39° 37' 57.15" W 85° 49' 27.54" 01 E	L	804.9	112.00	SHB	Not Used
		ESV:	Bearing [True]: 184.0° to 205.0° Bearing [Mag]: 183.0° to 204.0°		Arc Distance: Out to 72.0 NM Altitude: 6000.0 to 18000.0 ft		

User Data (Continued)					<a href="#">Return To Summary</a>		
User DMEs (Continued)							
#	Name	Lat/Lon/MAGVAR	Range	Elevation [ft]	Frequency	Replaces	Status
8	CVG	N 39° 0' 57.53" W 84° 42' 12.05" 04 W	L	879.4	117.30	CVG	Used
		ESV:	Bearing [True]: 239.0° to 265.0° Bearing [Mag]: 243.0° to 269.0°		Arc Distance: Out to 80.0 NM Altitude: 5800.0 to 18000.0 ft		
9	CMI	N 40° 2' 4.30" W 88° 16' 33.82" 03 E	L	744.7	110.00	CMI	Not Used
		ESV:	Bearing [True]: 119.0° to 132.0° Bearing [Mag]: 116.0° to 129.0°		Arc Distance: Out to 72.0 NM Altitude: 10000.0 to 18000.0 ft		
10	FTK	N 37° 54' 25.98" W 85° 58' 21.23" 01 W	T	734.0	109.60	FTK	Used
		ESV:	Bearing [True]: 350.0° to 60.0° Bearing [Mag]: 351.0° to 61.0°		Arc Distance: Out to 44.0 NM Altitude: 2300.0 to 10000.0 ft		



**Name:** MARK SCHOENHOFF  
**Project Name:** KSDF FRIZN3 STAR  
**Output File:** KSDF FRIZN3 STAR  
HONOS LEWSS  
20160201\_1028  
**Software:** RNAV-Pro™  
**Version:** 2.39g  
**Date/Time:** 2/1/2016 10:32:01 AM  
**Input File:** [KSDF FRIZN3 STAR  
HONOS LEWSS  
20151229\\_0941.txt](#)  
**Databases:** AIRNAV Date: 11/30/2015  
CIFP Date: 9/18/2015  
DTED® (MAX) Date: 2002

## Results Summary:

**Flyability**



**DME/DME**



No Critical DMEs Exist

**Radars**

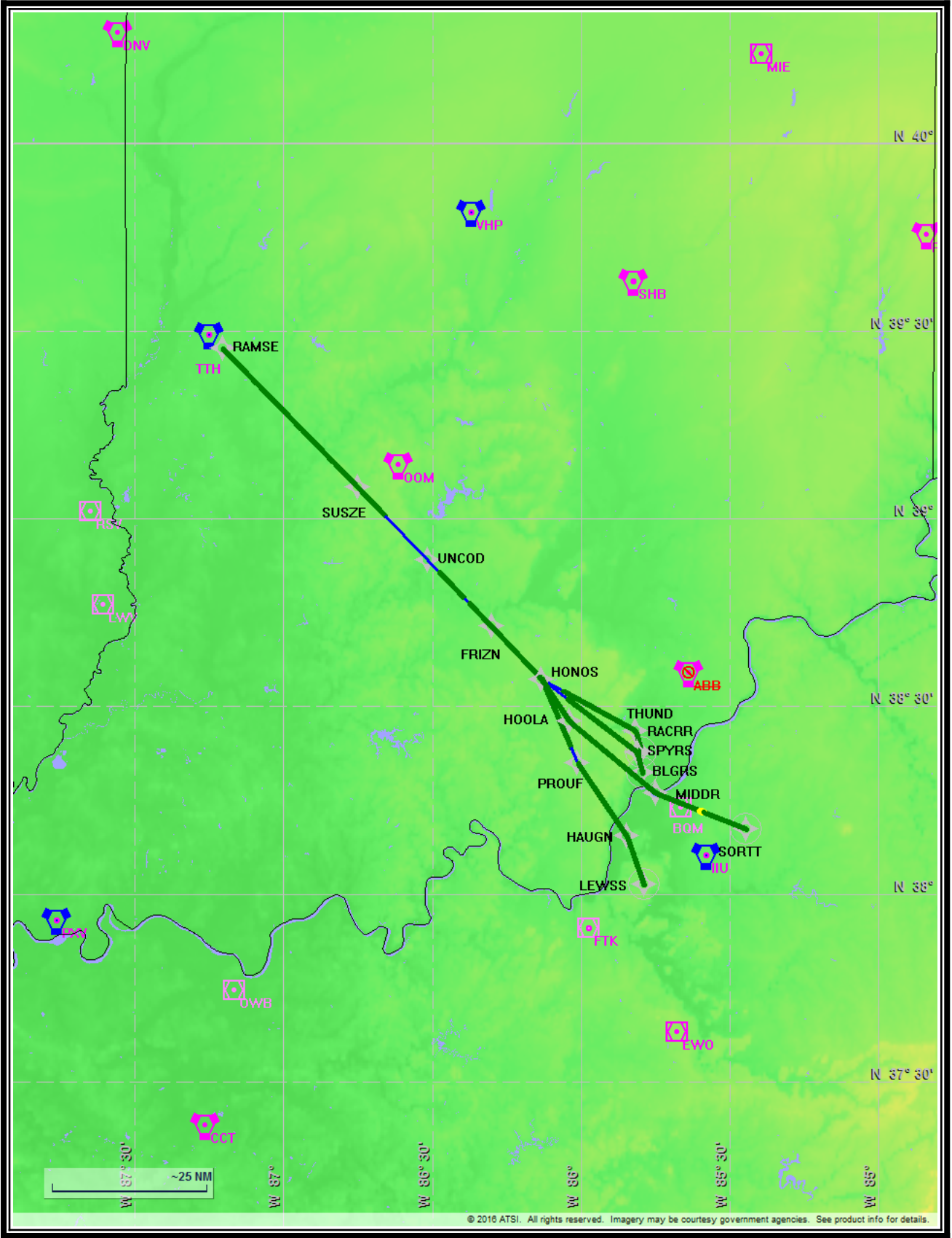


**Comms**



**TERPS**

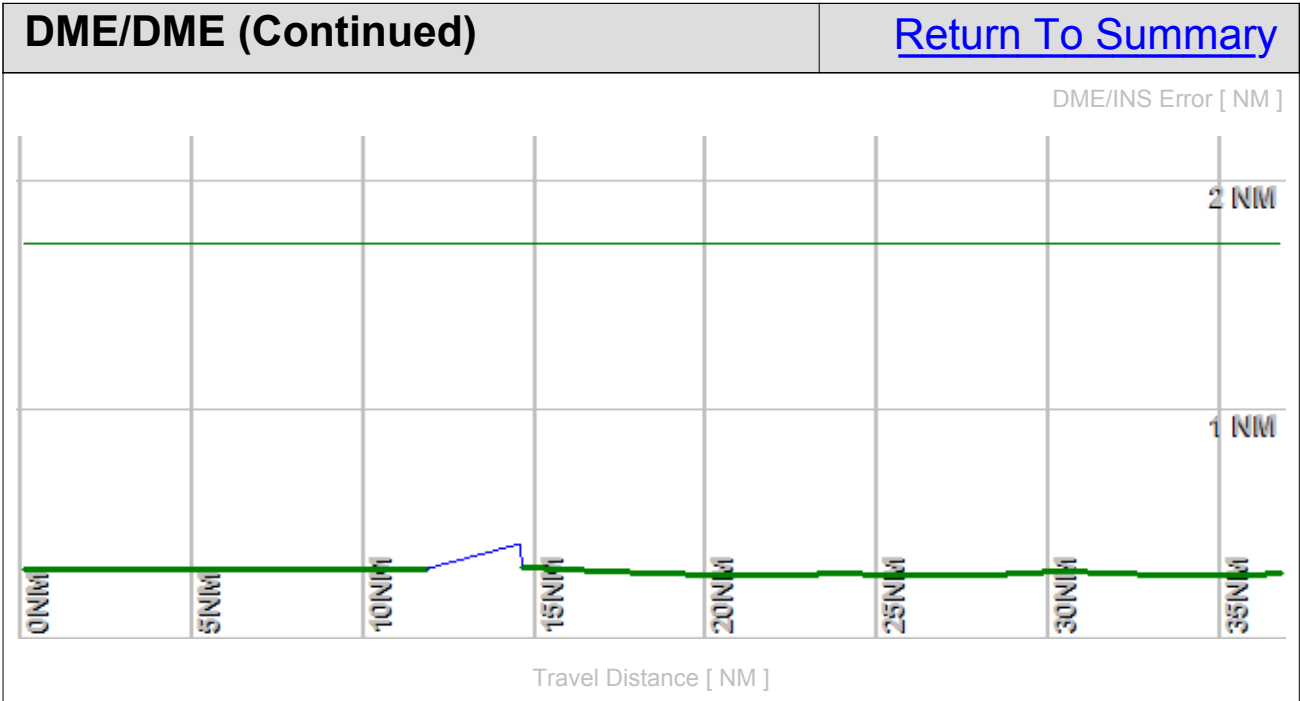




Flight Plan					<a href="#">Return To Summary</a>		
Name	Type	Lat/Lon	Alt [ft]	VNAV Mode	IAS [Kts]	Turn Type	Leg Type
HONOS	WP	N 38° 34' 19.24" W 86° 7' 55.74"	6000.0	Step	180.0	Fly By	TF
PROUF	WP	N 38° 20' 55.82" W 86° 0' 42.03"	6000.0	Step	180.0	Fly By	TF
HAUGN	WP	N 38° 9' 11.74" W 85° 50' 44.80"	6000.0	Step	180.0	Fly By	TF
LEWSS	WP	N 38° 1' 29.42" W 85° 47' 20.62"	5000.0	Step	180.0	Fly Over	TF

Flyability		<a href="#">Return To Summary</a>
Settings:	<b>Flight Type:</b> Arrival <b>Selected Airport:</b> KSDF <b>Aircraft Category:</b> Cat D <b>Climb Gradient:</b> <i>None assigned</i> <b>Ground Speeds:</b> Table: 200.0 Kts up to 11000.0 ft 240.0 Kts up to 18000.0 ft 260.0 Kts up to 24000.0 ft 340.0 Kts up to 99900.0 ft <b>Wind Settings:</b> <i>None assigned</i> <b>Descent During a Turn:</b> Allowed <b>VNAV Mode:</b> Flight Plan	
	Entire track is fly-able	

DME/DME		<a href="#">Return To Summary</a>
Settings:	RNP: 2.0	
	Flight Mode: Manual	
	Line of Sight (DTED Level 0 Max): Evaluated	
	DME Restrictions: Evaluated	
	Inertial Drift: Enabled	
	Initial Drift: 0.558 NM	
	INS Drift Rate: 8.000 NM/Hour	
	Range Mode: OSV	
	Co-Frequencies: Evaluated	
	RNP Edges: Evaluated	
	Min DME Range: 3.0 NM	
	Allowed Gap Length: 4.0 NM	
	DME Types: VOR/DME, VORTAC, Standalone, and User	
	DME Include Angles: 30 to 150	
	Critical DMEs: Allowed	
	DoD Facilities: Not included	
	Foreign Facilities: Not included	
Low DMEs: Included		
Terminal DMEs: Included		
Flight Check DMEs: Selected		
Higher Altitudes: Evaluated		
Near Maximum Altitude: Evaluated		
Total Number of DMEs Used: 5		
Maximum DME Error: 0.416 NM.		
No Critical DMEs were found.		
Available DMEs: IIU, SHB, CVG, BQM, FTK, EWO		
Disabled DMEs: ABB		



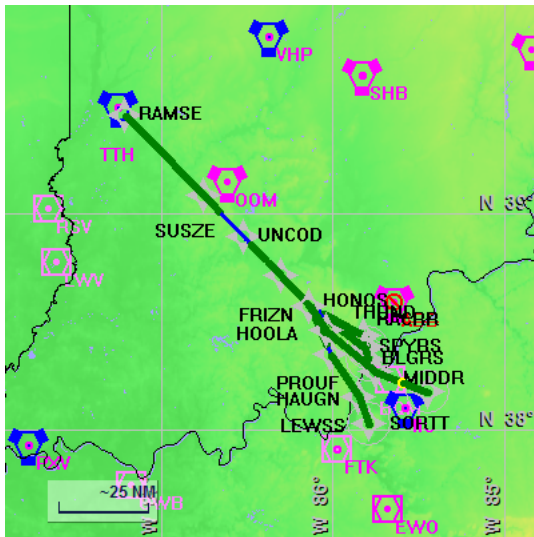


DME/DME (Continued)						<a href="#">Return To Summary</a>			
DMEs Used									
#	Name	Lat/Lon/MAGVAR	Range	Source	Critical	Err. [NM]	Status	Time	Distance
1	IIU	N 38° 6' 12.47" W 85° 34' 38.77" 01 E	H + <a href="#">ESV</a>	User	NO	0.478	Enabled	59.5%	59.5%
2	CVG	N 39° 0' 57.53" W 84° 42' 12.05" 04 W	L + <a href="#">ESV</a>	User	NO	0.700	Enabled	32.0%	32.0%
3	FTK	N 37° 54' 25.98" W 85° 58' 21.23" 01 W	T + <a href="#">ESV</a>	User	NO	0.708	Enabled	35.2%	35.2%
4	BQM	N 38° 13' 48.79" W 85° 39' 53.08" 04 W	T	Database	NO	0.416	Enabled	32.9%	32.9%
5	EWO	N 37° 37' 54.52" W 85° 40' 33.16" 01 E	L	Database	NO	0.441	Enabled	25.2%	25.2%
	Total Coverage							92.4%	92.4%
Flight Check DME Selection									
Distance [NM]		Selected DMEs						Alternate	
0.0		CVG	IIU	SHB	BQM				
14.2		FTK	IIU	EWO	BQM				
28.2		FTK	IIU	EWO	BQM				
Inertial Drift Segments									
#	Start Location			End Location			Length [NM]		
1	N 38° 23' 24.97" W 86° 2' 2.30"			N 38° 20' 54.89" W 86° 0' 39.98"			2.7		
VOR: FTK				Available from N 38° 23' 24.97" W 86° 2' 2.30" to N 38° 20' 54.89" W 86° 0' 39.98"					
VOR: FTK				Available from N 38° 23' 24.97" W 86° 2' 2.30" to N 38° 20' 54.89" W 86° 0' 39.98"					
VOR: MYS				Available from N 38° 23' 24.97" W 86° 2' 2.30" to N 38° 20' 54.89" W 86° 0' 39.98"					
VOR: ABB				Available from N 38° 23' 24.97" W 86° 2' 2.30" to N 38° 20' 54.89" W 86° 0' 39.98"					
VOR: BQM				Available from N 38° 23' 24.97" W 86° 2' 2.30" to N 38° 20' 54.89" W 86° 0' 39.98"					
VOR: IIU				Available from N 38° 23' 24.97" W 86° 2' 2.30" to N 38° 20' 54.89" W 86° 0' 39.98"					
VOR: SDF				Available from N 38° 23' 24.97" W 86° 2' 2.30" to N 38° 20' 54.89" W 86° 0' 39.98"					

Available DMEs by Waypoints		<a href="#">Return To Summary</a>
Waypoint Before	Waypoint After	DME List
HONOS	PROUF	CVG, SHB, IIU, and BQM
PROUF	HAUGN	FTK, IIU, BQM, and EWO
HAUGN	LEWSS	FTK, IIU, BQM, and EWO

User Data					<a href="#">Return To Summary</a>		
User Data Files							
#	File Name						
1	KSDF FRIZN STAR.udt						
User DMEs							
#	Name	Lat/Lon/MAGVAR	Range	Elevation [ft]	Frequency	Replaces	Status
1	IIU	N 38° 6' 12.47" W 85° 34' 38.77" 01 E	H	720.0	114.80	IIU	Used
		ESV:	Bearing [True]: 310.0° to 320.0° Bearing [Mag]: 309.0° to 319.0°		Arc Distance: Out to 98.0 NM Altitude: 9500.0 to 16500.0 ft		
2	PXV	N 37° 55' 41.95" W 87° 45' 44.56" 03 E	H	384.3	113.30	PXV	Not Used
		ESV:	Bearing [True]: 14.0° to 65.0° Bearing [Mag]: 11.0° to 62.0°		Arc Distance: Out to 98.0 NM Altitude: 9500.0 to 15000.0 ft		
3	TTH	N 39° 29' 20.19" W 87° 14' 56.47" 02 E	H	606.1	115.30	TTH	Not Used
		ESV:	Bearing [True]: 132.0° to 140.0° Bearing [Mag]: 130.0° to 138.0°		Arc Distance: Out to 78.0 NM Altitude: 9500.0 to 16000.0 ft		
4	VHP	N 39° 48' 53.02" W 86° 22' 2.88" 01 E	H	823.0	116.30	VHP	Not Used
		Restriction:	Bearing [True]: 313.0° to 347.0° Bearing [Mag]: 312.0° to 346.0°		Distance: Beyond 25.0 NM Altitude: Below 4000.0 ft		
		ESV:	Bearing [True]: 169.0° to 178.0° Bearing [Mag]: 168.0° to 177.0°		Arc Distance: Out to 78.0 NM Altitude: 9500.0 to 16000.0 ft		
		ESV:	Bearing [True]: 209.0° to 250.0° Bearing [Mag]: 208.0° to 249.0°		Arc Distance: Out to 50.0 NM Altitude: 9500.0 to 16000.0 ft		
		ESV:	Bearing [True]: 142.0° to 204.0° Bearing [Mag]: 141.0° to 203.0°		Arc Distance: Out to 63.0 NM Altitude: 4000.0 to 18000.0 ft		
5	OKK	N 40° 31' 40.00" W 86° 3' 28.81" 00 E	H	826.6	113.50	OKK	Not Used
		Restriction:	Bearing [True]: 171.0° to 229.0° Bearing [Mag]: 171.0° to 229.0°		Distance: Beyond 35.0 NM Altitude: Below 2400.0 ft		
		Restriction:	Bearing [True]: 171.0° to 229.0° Bearing [Mag]: 171.0° to 229.0°		Distance: Beyond 35.0 NM Altitude: Below 2400.0 ft		
		ESV:	Bearing [True]: 191.0° to 223.0° Bearing [Mag]: 191.0° to 223.0°		Arc Distance: Out to 101.0 NM Altitude: 10000.0 to 18000.0 ft		
6	FLM	N 38° 38' 57.99" W 84° 18' 38.17" 04 W	H	808.5	117.00	FLM	Not Used
		ESV:	Bearing [True]: 271.0° to 281.0° Bearing [Mag]: 275.0° to 285.0°		Arc Distance: Out to 105.0 NM Altitude: 10000.0 to 18000.0 ft		
7	SHB	N 39° 37' 57.15" W 85° 49' 27.54" 01 E	L	804.9	112.00	SHB	Not Used
		ESV:	Bearing [True]: 184.0° to 205.0° Bearing [Mag]: 183.0° to 204.0°		Arc Distance: Out to 72.0 NM Altitude: 6000.0 to 18000.0 ft		

User Data (Continued)					<a href="#">Return To Summary</a>		
User DMEs (Continued)							
#	Name	Lat/Lon/MAGVAR	Range	Elevation [ft]	Frequency	Replaces	Status
8	CVG	N 39° 0' 57.53" W 84° 42' 12.05" 04 W	L	879.4	117.30	CVG	Used
		ESV:	Bearing [True]: 239.0° to 265.0° Bearing [Mag]: 243.0° to 269.0°		Arc Distance: Out to 80.0 NM Altitude: 5800.0 to 18000.0 ft		
9	CMI	N 40° 2' 4.30" W 88° 16' 33.82" 03 E	L	744.7	110.00	CMI	Not Used
		ESV:	Bearing [True]: 119.0° to 132.0° Bearing [Mag]: 116.0° to 129.0°		Arc Distance: Out to 72.0 NM Altitude: 10000.0 to 18000.0 ft		
10	FTK	N 37° 54' 25.98" W 85° 58' 21.23" 01 W	T	734.0	109.60	FTK	Used
		ESV:	Bearing [True]: 350.0° to 60.0° Bearing [Mag]: 351.0° to 61.0°		Arc Distance: Out to 44.0 NM Altitude: 2300.0 to 10000.0 ft		



**Name:** MARK SCHOENHOFF  
**Project Name:** KSDF FRIZN3 STAR  
**Output File:** KSDF FRIZN3 STAR  
HONOS SORTT  
20160201\_1028  
**Software:** RNAV-Pro™  
**Version:** 2.39g  
**Date/Time:** 2/1/2016 10:32:50 AM  
**Input File:** [KSDF FRIZN3 STAR  
HONOS SORTT  
20151229\\_0939.txt](#)  
**Databases:** AIRNAV Date: 11/30/2015  
CIFP Date: 9/18/2015  
DTED® (MAX) Date: 2002

## Results Summary:

**Flyability**



**DME/DME**



No Critical DMEs Exist

**Radars**

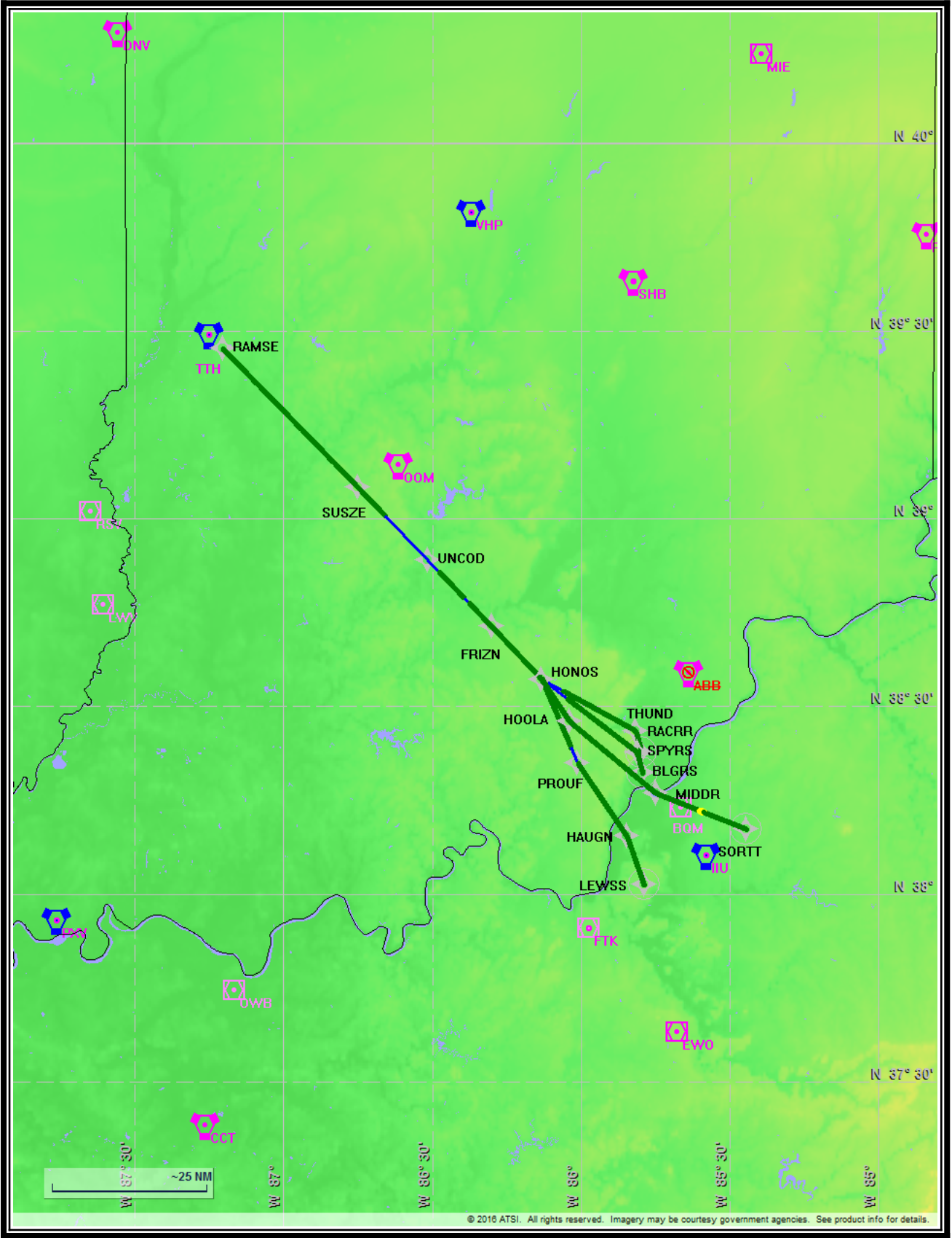


**Comms**



**TERPS**



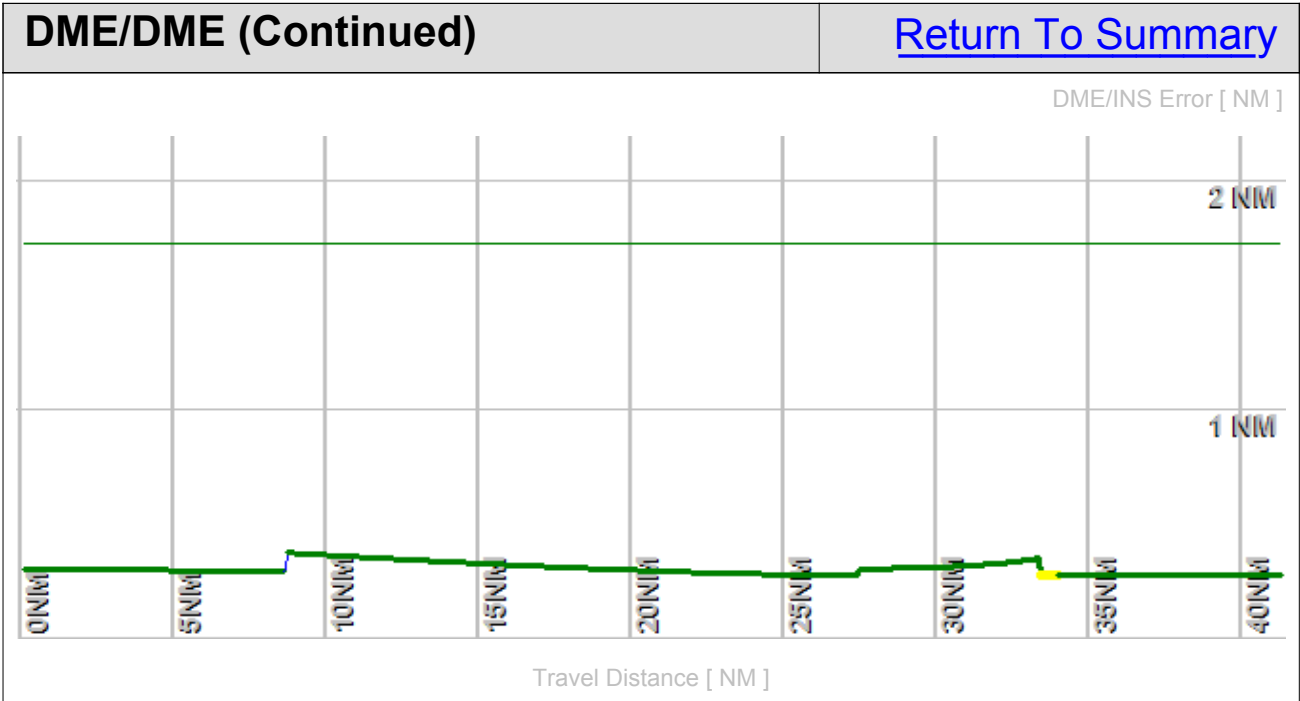


Flight Plan					<a href="#">Return To Summary</a>		
Name	Type	Lat/Lon	Alt [ft]	VNAV Mode	IAS [Kts]	Turn Type	Leg Type
HONOS	WP	N 38° 34' 19.24" W 86° 7' 55.74"	6000.0	Step	180.0	Fly By	TF
HOOLA	WP	N 38° 27' 31.58" W 86° 2' 18.61"	6000.0	Step	180.0	Fly By	TF
MIDDR	WP	N 38° 16' 6.17" W 85° 44' 56.62"	3000.0	Step	180.0	Fly By	TF
SORTT	WP	N 38° 10' 24.05" W 85° 26' 47.14"	2300.0	Step	180.0	Fly Over	TF

Flyability		<a href="#">Return To Summary</a>
Settings:	<b>Flight Type:</b> Arrival	
	<b>Selected Airport:</b> KSDF	
	<b>Aircraft Category:</b> Cat D	
	<b>Climb Gradient:</b> <i>None assigned</i>	
	<b>Ground Speeds:</b>  Table: <div><div>200.0 Kts up to 11000.0 ft</div><div>240.0 Kts up to 18000.0 ft</div><div>260.0 Kts up to 24000.0 ft</div><div>340.0 Kts up to 99900.0 ft</div></div>	
	<b>Wind Settings:</b> <i>None assigned</i>	
	<b>Descent During a Turn:</b> Allowed	
	<b>VNAV Mode:</b> Flight Plan	
Entire track is fly-able		



DME/DME		<a href="#">Return To Summary</a>
Settings:	RNP: 2.0	
	Flight Mode: Manual	
	Line of Sight (DTED Level 0 Max):	Evaluated
	DME Restrictions:	Evaluated
	Inertial Drift:	Enabled
	Initial Drift:	0.558 NM
	INS Drift Rate:	8.000 NM/Hour
	Range Mode:	OSV
	Co-Frequencies:	Evaluated
	RNP Edges:	Evaluated
	Min DME Range:	3.0 NM
	Allowed Gap Length:	4.0 NM
	DME Types:	VOR/DME, VORTAC, Standalone, and User
	DME Include Angles:	30 to 150
	Critical DMEs:	Allowed
	DoD Facilities:	Not included
	Foreign Facilities:	Not included
Low DMEs:	Included	
Terminal DMEs:	Included	
Flight Check DMEs:	Selected	
Higher Altitudes:	Evaluated	
Near Maximum Altitude:	Evaluated	
Total Number of DMEs Used: 5		
Maximum DME Error: 0.377 NM.		
No Critical DMEs were found.		
Available DMEs: IIU, SHB, CVG, BQM, FTK, EWO		
Disabled DMEs: ABB		

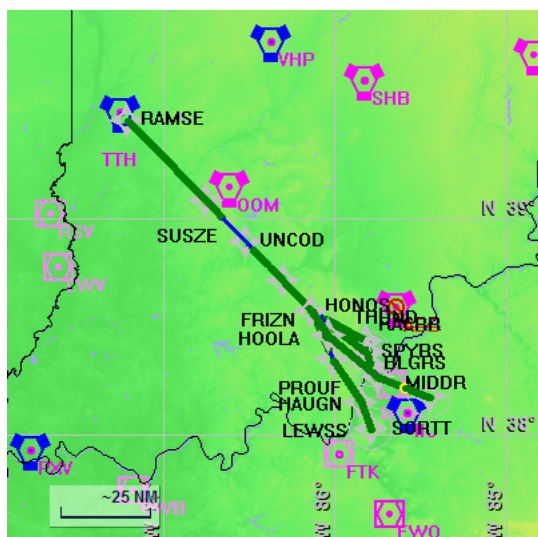


DME/DME (Continued)						<a href="#">Return To Summary</a>			
DMEs Used									
#	Name	Lat/Lon/MAGVAR	Range	Source	Critical	Err. [NM]	Status	Time	Distance
1	IIU	N 38° 6' 12.47" W 85° 34' 38.77" 01 E	H + <a href="#">ESV</a>	User	NO	0.473	Enabled	35.0%	35.0%
2	CVG	N 39° 0' 57.53" W 84° 42' 12.05" 04 W	L + <a href="#">ESV</a>	User	NO	0.468	Enabled	20.7%	20.7%
3	FTK	N 37° 54' 25.98" W 85° 58' 21.23" 01 W	T + <a href="#">ESV</a>	User	NO	1.287	Enabled	59.8%	59.8%
4	BQM	N 38° 13' 48.79" W 85° 39' 53.08" 04 W	T	Database	NO	0.499	Enabled	64.7%	64.7%
5	EWO	N 37° 37' 54.52" W 85° 40' 33.16" 01 E	L	Database	NO	0.377	Enabled	19.2%	19.2%
	Total Coverage							99.7%	99.7%
Flight Check DME Selection									
Distance [NM]		Selected DMEs						Alternate	
0.0		CVG	IIU	SHB	BQM				
7.6		CVG	IIU	FTK	BQM				
25.4		EWO	IIU	FTK	BQM				
Inertial Drift Segments									
#	Start Location			End Location			Length [NM]		
1	N 38° 27' 11.27" W 86° 1' 47.98"			N 38° 27' 9.10" W 86° 1' 44.75"			0.1		
VOR: FTK			Available from N 38° 27' 11.27" W 86° 1' 47.98" to N 38° 27' 9.10" W 86° 1' 44.75"						
VOR: FTK			Available from N 38° 27' 11.27" W 86° 1' 47.98" to N 38° 27' 9.10" W 86° 1' 44.75"						
VOR: MYS			Available from N 38° 27' 11.27" W 86° 1' 47.98" to N 38° 27' 9.10" W 86° 1' 44.75"						
VOR: ABB			Available from N 38° 27' 11.27" W 86° 1' 47.98" to N 38° 27' 9.10" W 86° 1' 44.75"						
VOR: BQM			Available from N 38° 27' 11.27" W 86° 1' 47.98" to N 38° 27' 9.10" W 86° 1' 44.75"						
VOR: IIU			Available from N 38° 27' 11.27" W 86° 1' 47.98" to N 38° 27' 9.10" W 86° 1' 44.75"						
VOR: SDF			Available from N 38° 27' 11.27" W 86° 1' 47.98" to N 38° 27' 9.10" W 86° 1' 44.75"						

Available DMEs by Waypoints		<a href="#">Return To Summary</a>
Waypoint Before	Waypoint After	DME List
HONOS	HOOLA	CVG, SHB, IIU, and BQM
HOOLA	MIDDR	FTK, CVG, IIU, and BQM
MIDDR	SORTT	FTK, IIU, BQM, and EWO

User Data					<a href="#">Return To Summary</a>		
User Data Files							
#	File Name						
1	KSDF FRIZN STAR.udt						
User DMEs							
#	Name	Lat/Lon/MAGVAR	Range	Elevation [ft]	Frequency	Replaces	Status
1	IIU	N 38° 6' 12.47" W 85° 34' 38.77" 01 E	H	720.0	114.80	IIU	Used
		ESV:	Bearing [True]: 310.0° to 320.0° Bearing [Mag]: 309.0° to 319.0°		Arc Distance: Out to 98.0 NM Altitude: 9500.0 to 16500.0 ft		
2	PXV	N 37° 55' 41.95" W 87° 45' 44.56" 03 E	H	384.3	113.30	PXV	Not Used
		ESV:	Bearing [True]: 14.0° to 65.0° Bearing [Mag]: 11.0° to 62.0°		Arc Distance: Out to 98.0 NM Altitude: 9500.0 to 15000.0 ft		
3	TTH	N 39° 29' 20.19" W 87° 14' 56.47" 02 E	H	606.1	115.30	TTH	Not Used
		ESV:	Bearing [True]: 132.0° to 140.0° Bearing [Mag]: 130.0° to 138.0°		Arc Distance: Out to 78.0 NM Altitude: 9500.0 to 16000.0 ft		
4	VHP	N 39° 48' 53.02" W 86° 22' 2.88" 01 E	H	823.0	116.30	VHP	Not Used
		Restriction:	Bearing [True]: 313.0° to 347.0° Bearing [Mag]: 312.0° to 346.0°		Distance: Beyond 25.0 NM Altitude: Below 4000.0 ft		
		ESV:	Bearing [True]: 169.0° to 178.0° Bearing [Mag]: 168.0° to 177.0°		Arc Distance: Out to 78.0 NM Altitude: 9500.0 to 16000.0 ft		
		ESV:	Bearing [True]: 209.0° to 250.0° Bearing [Mag]: 208.0° to 249.0°		Arc Distance: Out to 50.0 NM Altitude: 9500.0 to 16000.0 ft		
		ESV:	Bearing [True]: 142.0° to 204.0° Bearing [Mag]: 141.0° to 203.0°		Arc Distance: Out to 63.0 NM Altitude: 4000.0 to 18000.0 ft		
5	OKK	N 40° 31' 40.00" W 86° 3' 28.81" 00 E	H	826.6	113.50	OKK	Not Used
		Restriction:	Bearing [True]: 171.0° to 229.0° Bearing [Mag]: 171.0° to 229.0°		Distance: Beyond 35.0 NM Altitude: Below 2400.0 ft		
		Restriction:	Bearing [True]: 171.0° to 229.0° Bearing [Mag]: 171.0° to 229.0°		Distance: Beyond 35.0 NM Altitude: Below 2400.0 ft		
		ESV:	Bearing [True]: 191.0° to 223.0° Bearing [Mag]: 191.0° to 223.0°		Arc Distance: Out to 101.0 NM Altitude: 10000.0 to 18000.0 ft		
6	FLM	N 38° 38' 57.99" W 84° 18' 38.17" 04 W	H	808.5	117.00	FLM	Not Used
		ESV:	Bearing [True]: 271.0° to 281.0° Bearing [Mag]: 275.0° to 285.0°		Arc Distance: Out to 105.0 NM Altitude: 10000.0 to 18000.0 ft		
7	SHB	N 39° 37' 57.15" W 85° 49' 27.54" 01 E	L	804.9	112.00	SHB	Not Used
		ESV:	Bearing [True]: 184.0° to 205.0° Bearing [Mag]: 183.0° to 204.0°		Arc Distance: Out to 72.0 NM Altitude: 6000.0 to 18000.0 ft		

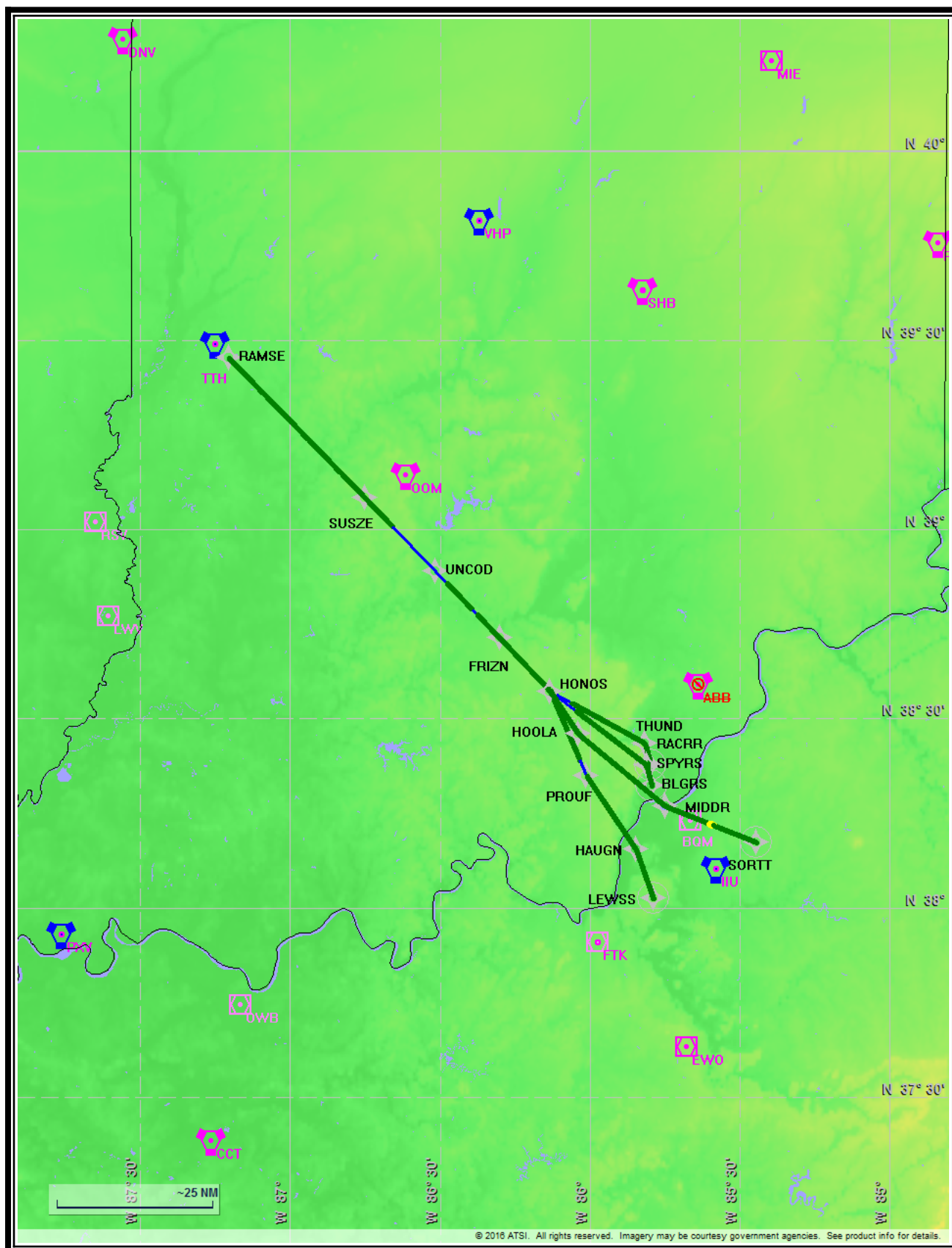
User Data (Continued)					<a href="#">Return To Summary</a>		
User DMEs (Continued)							
#	Name	Lat/Lon/MAGVAR	Range	Elevation [ft]	Frequency	Replaces	Status
8	CVG	N 39° 0' 57.53" W 84° 42' 12.05" 04 W	L	879.4	117.30	CVG	Used
		ESV:	Bearing [True]: 239.0° to 265.0° Bearing [Mag]: 243.0° to 269.0°		Arc Distance: Out to 80.0 NM Altitude: 5800.0 to 18000.0 ft		
9	CMI	N 40° 2' 4.30" W 88° 16' 33.82" 03 E	L	744.7	110.00	CMI	Not Used
		ESV:	Bearing [True]: 119.0° to 132.0° Bearing [Mag]: 116.0° to 129.0°		Arc Distance: Out to 72.0 NM Altitude: 10000.0 to 18000.0 ft		
10	FTK	N 37° 54' 25.98" W 85° 58' 21.23" 01 W	T	734.0	109.60	FTK	Used
		ESV:	Bearing [True]: 350.0° to 60.0° Bearing [Mag]: 351.0° to 61.0°		Arc Distance: Out to 44.0 NM Altitude: 2300.0 to 10000.0 ft		



**Name:** MARK SCHOENHOFF  
**Project Name:** KSDF FRIZN3 STAR  
**Output File:** KSDF FRIZN3 STAR  
 RAMSE RACRR  
 20160201\_1028  
**Procedure Name:** FRIZN3  
**Software:** RNAV-Pro™  
**Version:** 2.39g  
**Date/Time:** 2/1/2016 10:30:29 AM  
**Input File:** [KSDF FRIZN3 STAR  
 RAMSE RACRR  
 20151229\\_0937.txt](#)  
**Databases:** AIRNAV Date: 11/30/2015  
 CIFP Date: 9/18/2015  
 DTED® (MAX) Date: 2002

## Results Summary:

<b>Flyability</b>	✓	
<b>DME/DME</b>	✓	No Critical DMEs Exist
<b>Radars</b>	?	
<b>Comms</b>	?	
<b>TERPS</b>	?	

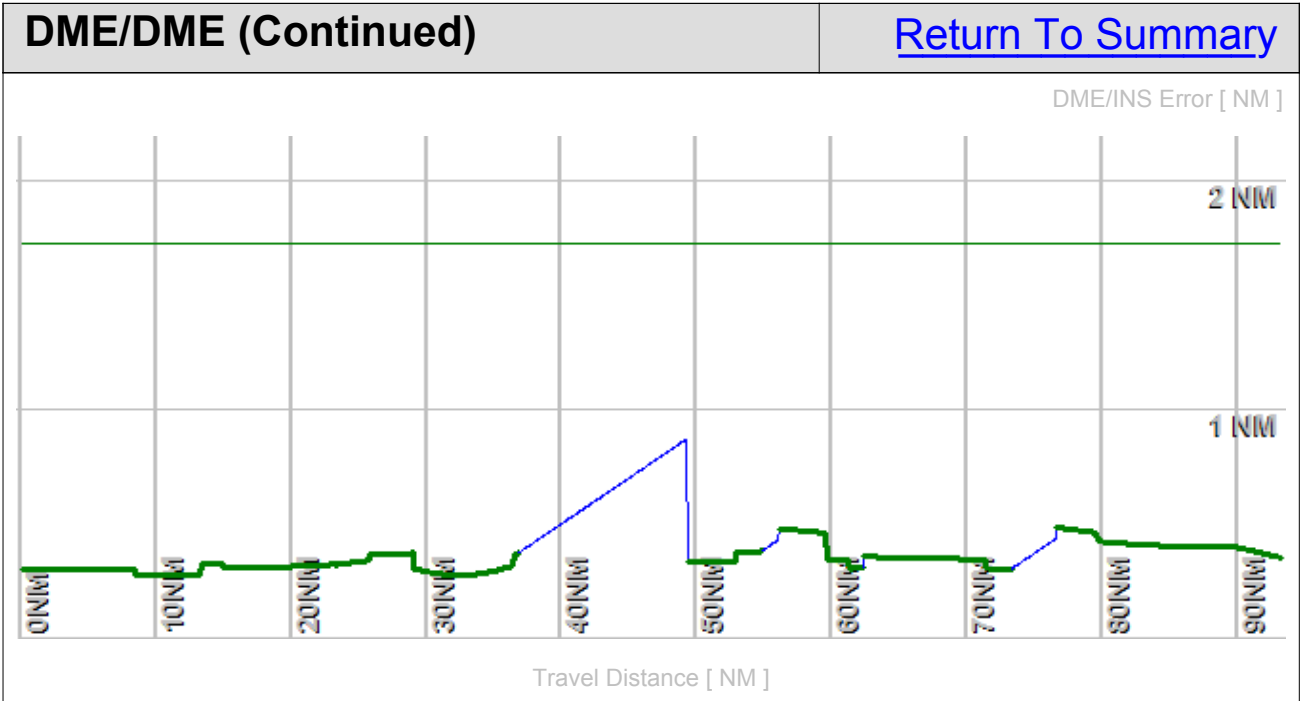




Flight Plan					<a href="#">Return To Summary</a>		
Name	Type	Lat/Lon	Alt [ft]	VNAV Mode	IAS [Kts]	Turn Type	Leg Type
RAMSE	WP	N 39° 27' 10.31" W 87° 12' 15.36"	10000.0	Step	180.0	Fly By	TF
SUSZE	WP	N 39° 4' 59.00" W 86° 44' 59.00"	10000.0	Step	180.0	Fly By	TF
UNCOD	WP	N 38° 53' 22.86" W 86° 30' 54.69"	10000.0	Step	180.0	Fly By	TF
FRIZN	WP	N 38° 42' 47.04" W 86° 18' 4.78"	10000.0	Step	180.0	Fly By	TF
HONOS	WP	N 38° 34' 19.24" W 86° 7' 55.74"	6000.0	Step	180.0	Fly By	TF
THUND	WP	N 38° 26' 4.54" W 85° 48' 58.05"	5000.0	Step	180.0	Fly By	TF
RACRR	WP	N 38° 22' 39.71" W 85° 47' 47.64"	4000.0	Step	180.0	Fly Over	TF

Flyability		<a href="#">Return To Summary</a>
Settings:	<b>Flight Type:</b> Arrival	
	<b>Selected Airport:</b> KSDF	
	<b>Aircraft Category:</b> Cat D	
	<b>Climb Gradient:</b> <i>None assigned</i>	
	<b>Ground Speeds:</b>	
	Table:	
	200.0 Kts up to 11000.0 ft	
	240.0 Kts up to 18000.0 ft	
	260.0 Kts up to 24000.0 ft	
	340.0 Kts up to 99900.0 ft	
	<b>Wind Settings:</b> <i>None assigned</i>	
	<b>Descent During a Turn:</b> Allowed	
	<b>VNAV Mode:</b> Flight Plan	
Entire track is fly-able		

DME/DME	<a href="#">Return To Summary</a>
<b>Settings:</b>	<p> <b>RNP:</b> 2.0  <b>Flight Mode:</b> Manual  <b>Line of Sight (DTED Level 0 Max):</b> Evaluated  <b>DME Restrictions:</b> Evaluated  <b>Inertial Drift:</b> Enabled              <b>Initial Drift:</b> 0.558 NM              <b>INS Drift Rate:</b> 8.000 NM/Hour  <b>Range Mode:</b> OSV  <b>Co-Frequencies:</b> Evaluated  <b>RNP Edges:</b> Evaluated  <b>Min DME Range:</b> 3.0 NM  <b>Allowed Gap Length:</b> 4.0 NM  <b>DME Types:</b> VOR/DME, VORTAC, Standalone, and User  <b>DME Include Angles:</b> 30 to 150  <b>Critical DMEs:</b> Allowed  <b>DoD Facilities:</b> Not included  <b>Foreign Facilities:</b> Not included  <b>Low DMEs:</b> Included  <b>Terminal DMEs:</b> Included  <b>Flight Check DMEs:</b> Selected  <b>Higher Altitudes:</b> Evaluated  <b>Near Maximum Altitude:</b> Evaluated         </p>
<p> <b>Total Number of DMEs Used:</b> 11  <b>Maximum DME Error:</b> 0.874 NM.  <b>No Critical DMEs were found.</b>  <b>Available DMEs:</b> TTH, VHP, OKK, CMI, OOM, IIU, FLM, SHB, CVG, FTK, BQM  <b>Disabled DMEs:</b> ABB  <b>Co-Frequency Interference:</b> 108.6(MZZ) and 109.6(PNT)         </p>	



DME/DME (Continued)						<a href="#">Return To Summary</a>			
DMEs Used									
#	Name	Lat/Lon/MAGVAR	Range	Source	Critical	Err. [NM]	Status	Time	Distance
1	OKK	N 40° 31' 40.00" W 86° 3' 28.81" 00 E	H + <a href="#">ESV</a>	User	NO	0.825	Enabled	24.4%	24.4%
2	CMI	N 40° 2' 4.30" W 88° 16' 33.82" 03 E	L + <a href="#">ESV</a>	User	NO	0.874	Enabled	9.1%	9.1%
3	TTH	N 39° 29' 20.19" W 87° 14' 56.47" 02 E	H + <a href="#">ESV</a>	User	NO	1.286	Enabled	18.4%	18.4%
4	VHP	N 39° 48' 53.02" W 86° 22' 2.88" 01 E	H + <a href="#">ESV</a>	User	NO	0.874	Enabled	11.0%	11.0%
5	IIU	N 38° 6' 12.47" W 85° 34' 38.77" 01 E	H + <a href="#">ESV</a>	User	NO	0.874	Enabled	10.7%	10.7%
6	OOM	N 39° 8' 37.76" W 86° 36' 46.87" 02 W	L	Database	NO	0.874	Enabled	21.5%	21.5%
7	FLM	N 38° 38' 57.99" W 84° 18' 38.17" 04 W	H + <a href="#">ESV</a>	User	NO	1.287	Enabled	11.5%	11.5%
8	SHB	N 39° 37' 57.15" W 85° 49' 27.54" 01 E	L + <a href="#">ESV</a>	User	NO	0.874	Enabled	12.5%	12.5%
9	CVG	N 39° 0' 57.53" W 84° 42' 12.05" 04 W	L + <a href="#">ESV</a>	User	NO	0.874	Enabled	11.7%	11.7%
10	FTK	N 37° 54' 25.98" W 85° 58' 21.23" 01 W	T + <a href="#">ESV</a>	User	NO	1.104	Enabled	17.9%	17.9%
11	BQM	N 38° 13' 48.79" W 85° 39' 53.08" 04 W	T	Database	NO	0.874	Enabled	14.6%	14.6%
	Total Coverage							81.5%	81.5%
Flight Check DME Selection									
Distance [NM]		Selected DMEs						Alternate	
0.0		CMI	OKK	TTH	VHP	OOM			
10.8		IIU	OKK	TTH	VHP	OOM			
30.7		OKK	TTH	VHP	OOM				
46.6		FLM	SHB	TTH	VHP	OOM			
61.2		FLM	SHB	TTH	CVG	IIU			
72.3		FTK	SHB	BQM	CVG	IIU			
89.1		FTK	BQM	IIU					
Inertial Drift Segments									
#	Start Location			End Location				Length [NM]	

Available DMEs by Waypoints		<a href="#">Return To Summary</a>
Waypoint Before	Waypoint After	DME List
RAMSE	SUSZE	CMI, OKK, VHP, TTH, IIU, and OOM
SUSZE	UNCOD	OKK, VHP, TTH, and OOM
UNCOD	FRIZN	SHB, FLM, VHP, TTH, and OOM
FRIZN	HONOS	CVG, SHB, FLM, TTH, and IIU
HONOS	THUND	FTK, CVG, SHB, IIU, and BQM
THUND	RACRR	FTK, IIU, and BQM

User Data					<a href="#">Return To Summary</a>		
User Data Files							
#	File Name						
1	KSDF FRIZN STAR.udt						
User DMEs							
#	Name	Lat/Lon/MAGVAR	Range	Elevation [ft]	Frequency	Replaces	Status
1	IIU	N 38° 6' 12.47" W 85° 34' 38.77" 01 E	H	720.0	114.80	IIU	Used
		ESV:	Bearing [True]: 310.0° to 320.0° Bearing [Mag]: 309.0° to 319.0°		Arc Distance: Out to 98.0 NM Altitude: 9500.0 to 16500.0 ft		
2	PXV	N 37° 55' 41.95" W 87° 45' 44.56" 03 E	H	384.3	113.30	PXV	Not Used
		ESV:	Bearing [True]: 14.0° to 65.0° Bearing [Mag]: 11.0° to 62.0°		Arc Distance: Out to 98.0 NM Altitude: 9500.0 to 15000.0 ft		
3	TTH	N 39° 29' 20.19" W 87° 14' 56.47" 02 E	H	606.1	115.30	TTH	Used
		ESV:	Bearing [True]: 132.0° to 140.0° Bearing [Mag]: 130.0° to 138.0°		Arc Distance: Out to 78.0 NM Altitude: 9500.0 to 16000.0 ft		
4	VHP	N 39° 48' 53.02" W 86° 22' 2.88" 01 E	H	823.0	116.30	VHP	Used
		Restriction:	Bearing [True]: 313.0° to 347.0° Bearing [Mag]: 312.0° to 346.0°		Distance: Beyond 25.0 NM Altitude: Below 4000.0 ft		
		ESV:	Bearing [True]: 169.0° to 178.0° Bearing [Mag]: 168.0° to 177.0°		Arc Distance: Out to 78.0 NM Altitude: 9500.0 to 16000.0 ft		
		ESV:	Bearing [True]: 209.0° to 250.0° Bearing [Mag]: 208.0° to 249.0°		Arc Distance: Out to 50.0 NM Altitude: 9500.0 to 16000.0 ft		
		ESV:	Bearing [True]: 142.0° to 204.0° Bearing [Mag]: 141.0° to 203.0°		Arc Distance: Out to 63.0 NM Altitude: 4000.0 to 18000.0 ft		
5	OKK	N 40° 31' 40.00" W 86° 3' 28.81" 00 E	H	826.6	113.50	OKK	Used
		Restriction:	Bearing [True]: 171.0° to 229.0° Bearing [Mag]: 171.0° to 229.0°		Distance: Beyond 35.0 NM Altitude: Below 2400.0 ft		
		Restriction:	Bearing [True]: 171.0° to 229.0° Bearing [Mag]: 171.0° to 229.0°		Distance: Beyond 35.0 NM Altitude: Below 2400.0 ft		
		ESV:	Bearing [True]: 191.0° to 223.0° Bearing [Mag]: 191.0° to 223.0°		Arc Distance: Out to 101.0 NM Altitude: 10000.0 to 18000.0 ft		
6	FLM	N 38° 38' 57.99" W 84° 18' 38.17" 04 W	H	808.5	117.00	FLM	Used
		ESV:	Bearing [True]: 271.0° to 281.0° Bearing [Mag]: 275.0° to 285.0°		Arc Distance: Out to 105.0 NM Altitude: 10000.0 to 18000.0 ft		
7	SHB	N 39° 37' 57.15" W 85° 49' 27.54" 01 E	L	804.9	112.00	SHB	Used
		ESV:	Bearing [True]: 184.0° to 205.0° Bearing [Mag]: 183.0° to 204.0°		Arc Distance: Out to 72.0 NM Altitude: 6000.0 to 18000.0 ft		

User Data (Continued)					<a href="#">Return To Summary</a>		
User DMEs (Continued)							
#	Name	Lat/Lon/MAGVAR	Range	Elevation [ft]	Frequency	Replaces	Status
8	CVG	N 39° 0' 57.53" W 84° 42' 12.05" 04 W	L	879.4	117.30	CVG	Used
		ESV:	Bearing [True]: 239.0° to 265.0° Bearing [Mag]: 243.0° to 269.0°		Arc Distance: Out to 80.0 NM Altitude: 5800.0 to 18000.0 ft		
9	CMI	N 40° 2' 4.30" W 88° 16' 33.82" 03 E	L	744.7	110.00	CMI	Used
		ESV:	Bearing [True]: 119.0° to 132.0° Bearing [Mag]: 116.0° to 129.0°		Arc Distance: Out to 72.0 NM Altitude: 10000.0 to 18000.0 ft		
10	FTK	N 37° 54' 25.98" W 85° 58' 21.23" 01 W	T	734.0	109.60	FTK	Used
		ESV:	Bearing [True]: 350.0° to 60.0° Bearing [Mag]: 351.0° to 61.0°		Arc Distance: Out to 44.0 NM Altitude: 2300.0 to 10000.0 ft		