

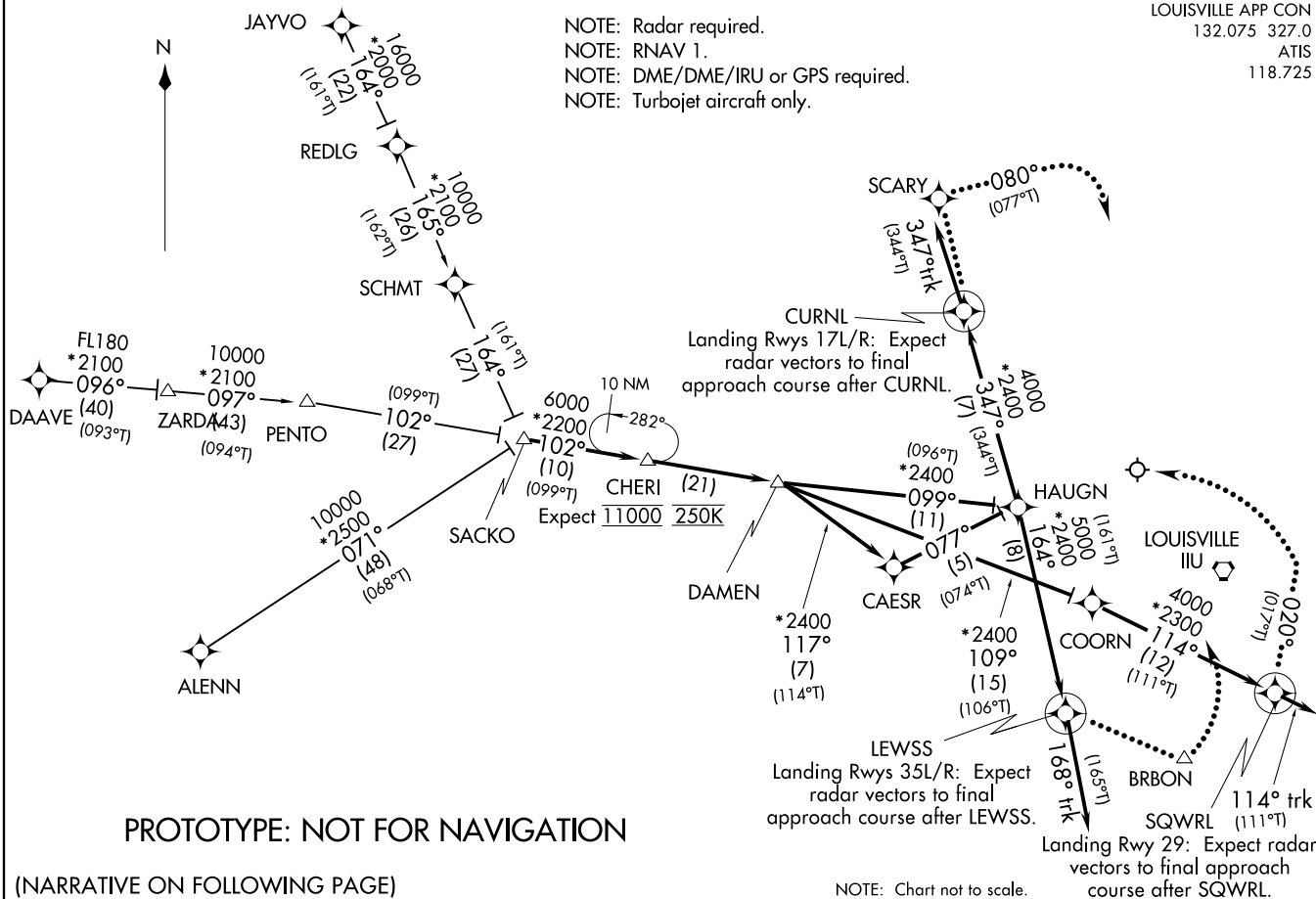
| | | | | | | |
|--|---------------|--------------------------------|----------------------------|---|---------------------------------------|-------------------------------------|
| Flight Procedure Tracking Form | | Action: FLIGHT CHECK | Task Type: STAR | Date Open: 04/30/2015 | Task #: 2014120412223401001 | Request #: 20141204122234 |
| Procedure: STAR DAMEN (RNAV) THREE LOUISVILLE KY KSDF | | | Airport ID: KSDF | Airport: LOUISVILLE INTL- STANDIFORD FIELD | | Reimbursable #: NO |
| City: LOUISVILLE | ST: KY | GPS #: | | Estimated Chart Date: 07/21/2016 | | FICO #: |
| Fac ID: N/A | | Fac. Type: | | | Specialist: JEFF ANDERSON | |
| Procedure Review | | | | | | |
| | Rec'd | Rel'd | Full Name | | Comments | |
| Lead: | 01/08/2016 | | | | | |
| QA: | | | | | | |
| Liaison: | | | | | | |
| Procedure Comments: | | | ENROUTE | Remark Type: INFORMATION | | |
| CONTACT: JULIE MORGAN, AJV-352 LEAD, 405-954-8586 | | | | | | |

QUALITY
15
CHECKED

(SACKO.DAMEN3) FIG ST
DAMEN THREE ARRIVAL (RNAV)

LOUISVILLE APP CON
132.075 327.0
ATIS
118.725

NOTE: Radar required.
NOTE: RNAV 1.
NOTE: DME/DME/IRU or GPS required.
NOTE: Turbojet aircraft only.



PROTOTYPE: NOT FOR NAVIGATION

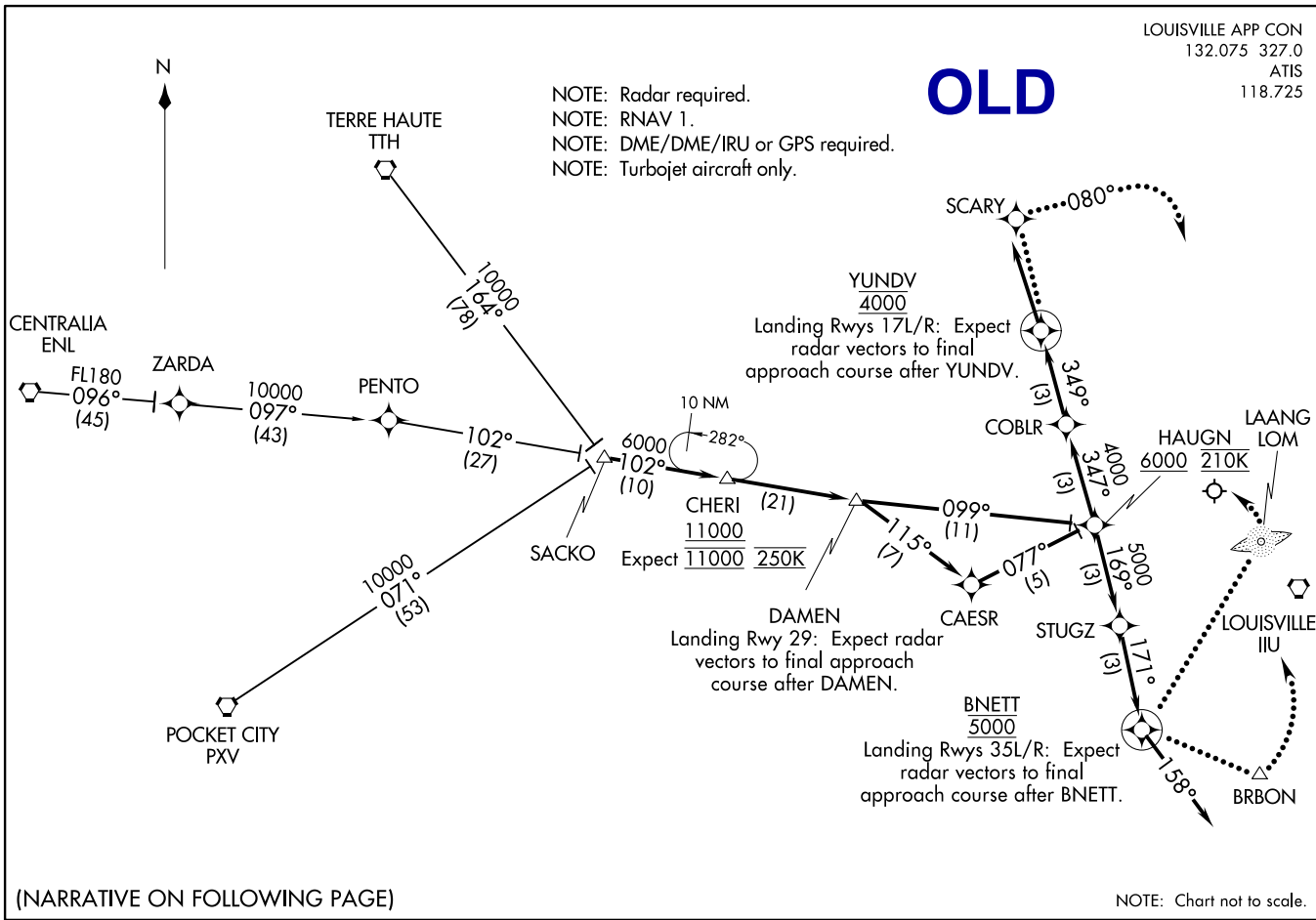
(NARRATIVE ON FOLLOWING PAGE)

DAMEN THREE ARRIVAL (RNAV)
(SACKO.DAMEN3) FIG

LOUISVILLE, KENTUCKY
LOUISVILLE INTL-STANDIFORD FIELD (SDF)

DAMEN TWO ARRIVAL (RNAV)
(SACKO, DAMEN2) 15008

LOUISVILLE INTL-STANDIFORD FIELD (SDF)
LOUISVILLE, KENTUCKY



DAMEN THREE ARRIVAL (RNAV)

ARRIVAL ROUTE DESCRIPTION

ALENN TRANSITION (ALENN.DAMEN3):DAAVE TRANSITION (DAAVE.DAMEN3):JAYVO TRANSITION (JAYVO.DAMEN3):

From over SACKO on track 102° to CHERI, , then on track 102° to DAMEN, the on assigned runway transition

LANDING RWY 17L/R: From DAMEN on track 117° to CAESR, then on track 077° to HAUGN, then on track 347° to CURNL, then on track 347°. Expect radar vectors to final approach course.

LANDING RWY 29: From DAMEN on track 109° to COORN, then on track 114° to SQWRL, then on track 114°. Expect radar vectors to final approach course.

LANDING RWY 35L/R: From DAMEN on track 099° to HAUGN, then on track 164°to LEWSS, then on track 168°. Expect radar vectors to final approach course.

LOST COMMUNICATIONS:

Landing Rwy 17L/R: Track to CURNL, cross CURNL at 4000, then proceed direct SCARY, at SCARY fly heading 080°, maintain 4000: intercept and execute ILS or LOC Rwy 17R approach. If unable, proceed to IIIU VORTAC and hold, maintain 6000.

Landing Rwy 29: Track to SQWRL, cross SQWRL at 3000, at SQWRL fly heading 020°, maintain 3000. Intercept and execute LOC Rwy 29 approach. If unable, proceed to IIIU VORTAC and hold, maintain 6000.

Landing Rwy 35L/R: Track to LEWSS, cross LEWSS at 5000, then proceed direct BRBON, maintain 5000, execute ILS or LOC Rwy 35L approach. If unable, proceed to IIIU VORTAC and hold, maintain 6000.

PROTOTYPE-NOT FOR NAVIGATION

ARRIVAL ROUTE DESCRIPTION

OLD

CENTRALIA TRANSITION (ENL.DAMEN2):
POCKET CITY TRANSITION (PXV.DAMEN2):
TERRE HAUTE TRANSITION (TTH.DAMEN2):

From over SACKO on track 102° to CHERI, cross CHERI at/above 11000, then on track 102° to DAMEN, thence on assigned runway transition

LANDING RWYS 17L/R: From over DAMEN on track 115° to CAESR, then on track 077° to HAUGN, cross HAUGN at/above 6000 and at 210K, then on track 347° to COBLR, then on track 349° to YUNDV, cross YUNDV at 4000, then on track 349°. Expect radar vectors to final approach course.

LANDING RWY 29: From over DAMEN on track 099° to HAUGN, cross HAUGN at/above 6000 and at 210K, then on track 169° to STUGZ, then on track 171° to BNETT, cross BNETT at 5000, then on track 158°. Expect radar vectors to final approach course after DAMEN.

LANDING RWYS 35L/R: From over DAMEN on track 099° to HAUGN, cross HAUGN at/above 6000 and at 210K, then on track 169° to STUGZ, then on track 171° to BNETT, cross BNETT at 5000, then on track 158°. Expect radar vectors to final approach course.

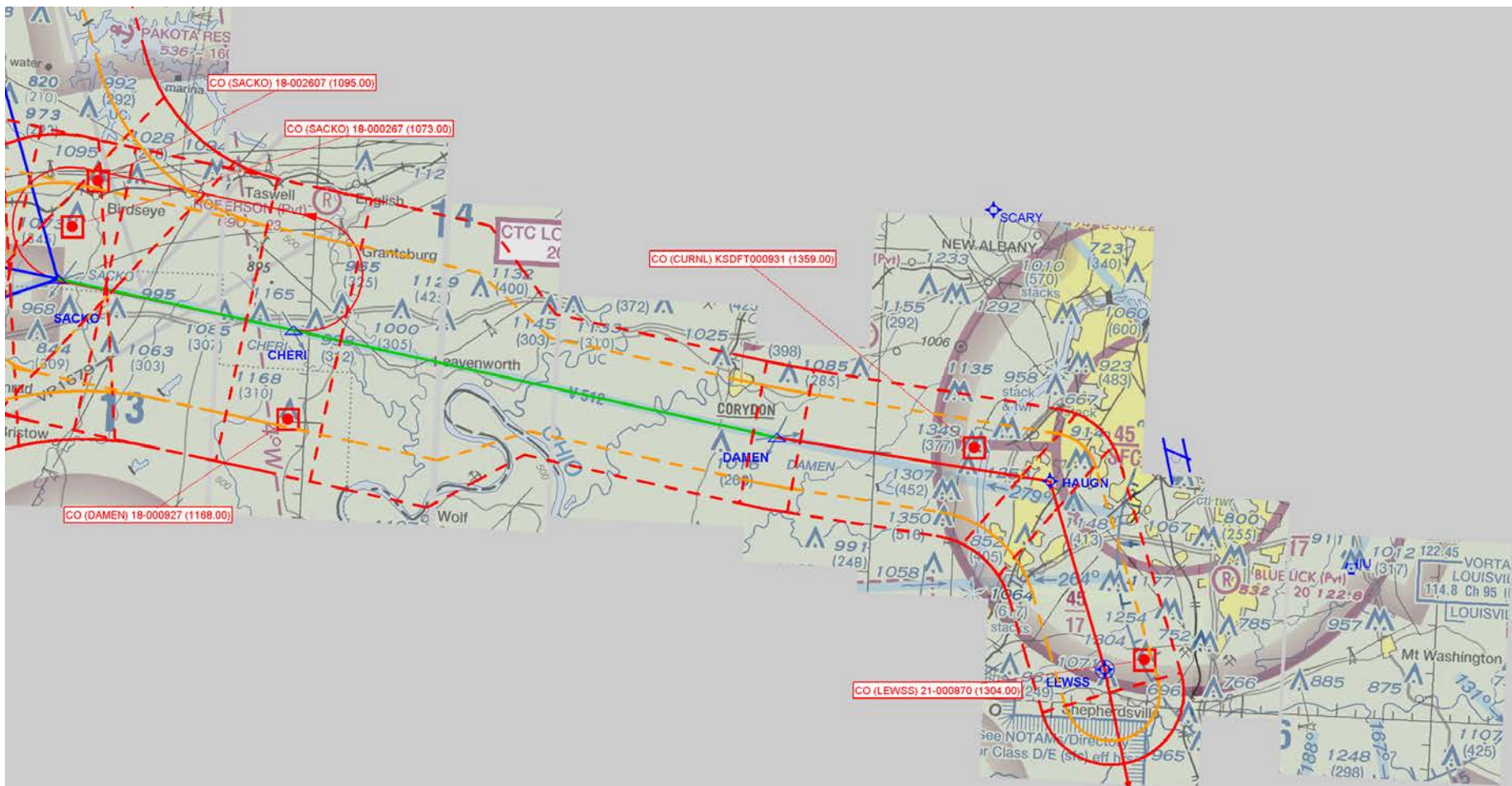
LOST COMMUNICATIONS:
Landing Rwy 17L/R: Track to YUNDV, cross YUNDV at 4000, then proceed direct SCARY, at SCARY fly heading 080°, maintain 4000: intercept and execute ILS or LOC 17R approach. If unable, proceed to III VORTAC and hold, maintain 6000.

Landing Rwy 29: Track to BNETT, cross BNETT at 5000, then proceed direct LAANG LOM, maintain 5000, execute LOC Rwy 29 approach. If unable, proceed to III VORTAC and hold, maintain 6000.

Landing Rwy 35L/R: Track to BNETT, cross BNETT at 5000, then proceed direct BRBON, maintain 5000, execute ILS or LOC Rwy 35L approach. If unable, proceed to III VORTAC and hold, maintain 6000.

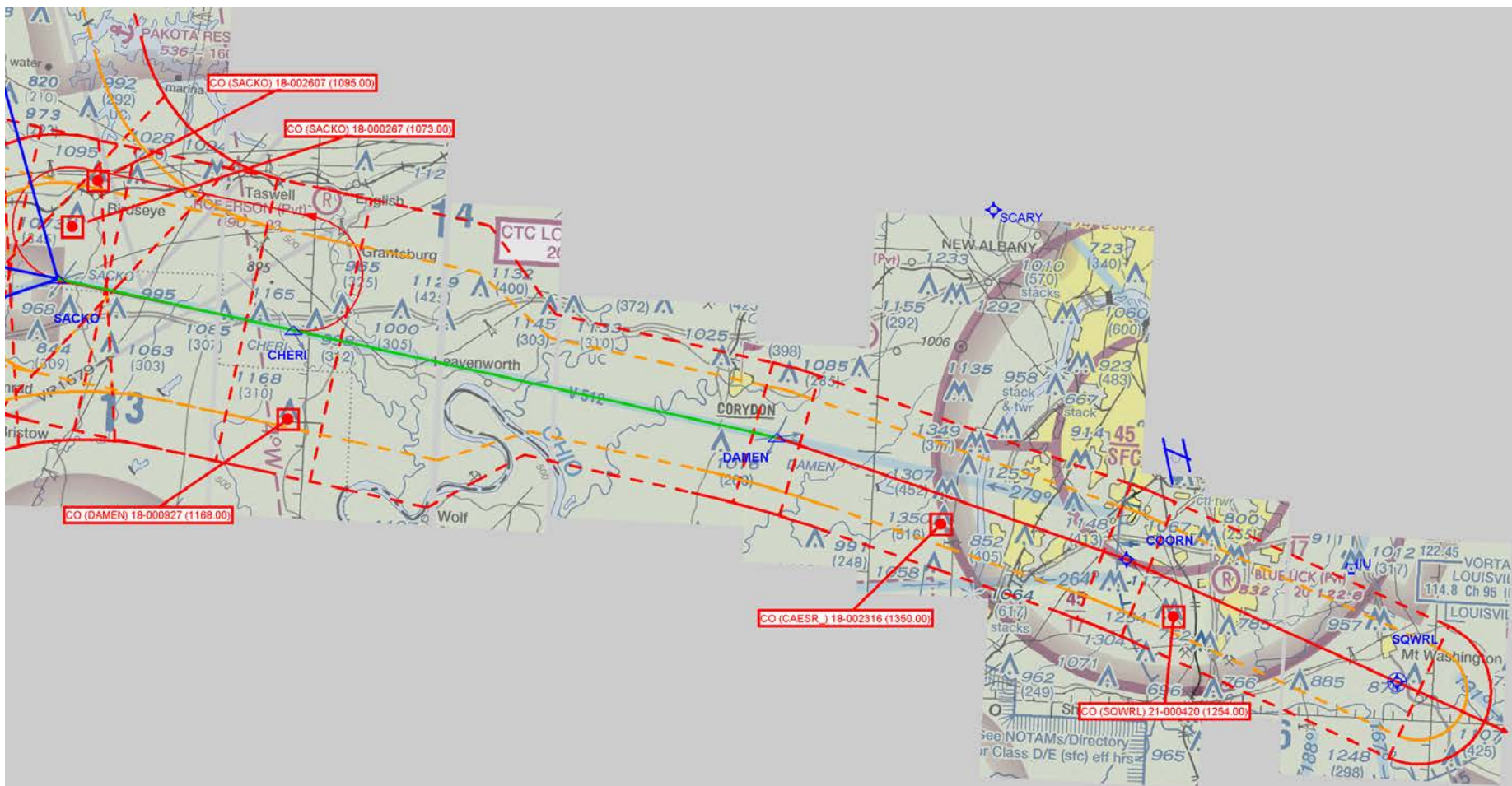
SE-1, 04 FEB 2016 to 03 MAR 2016

SE-1, 04 FEB 2016 to 03 MAR 2016



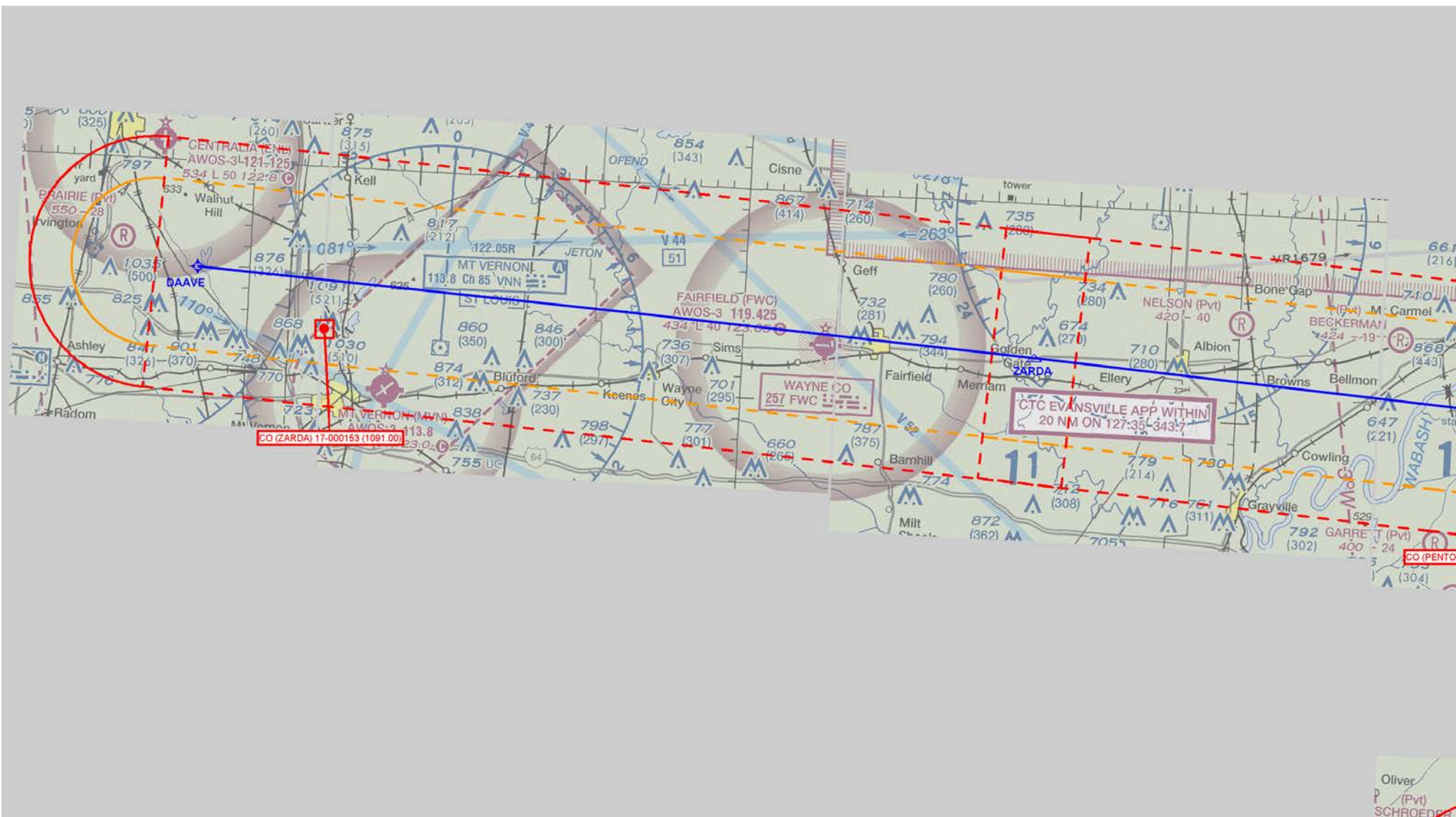
DAMEN (RNAV)

MAP 2 of 7



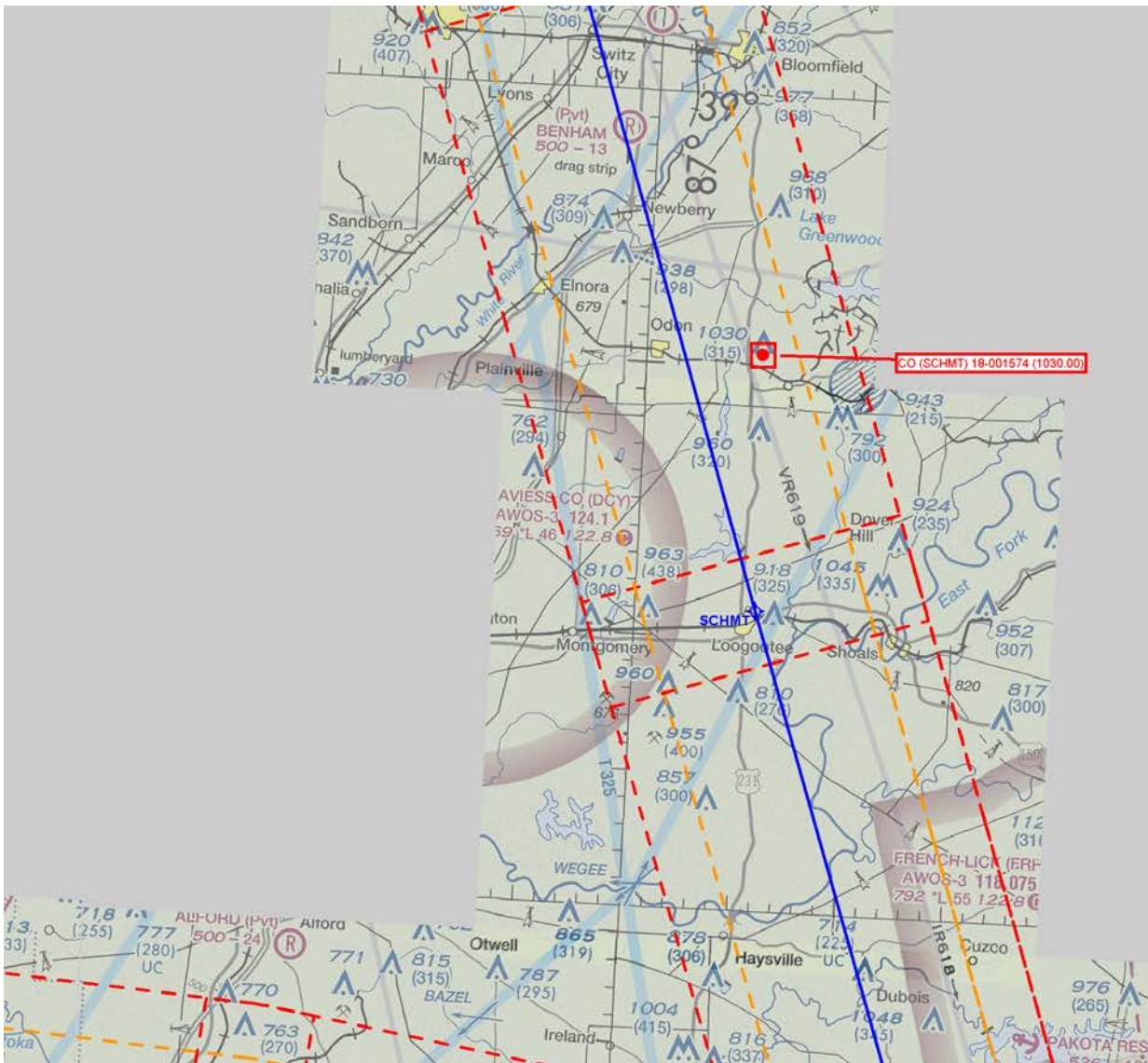
DAMEN (RNAV)

MAP 3 of 7



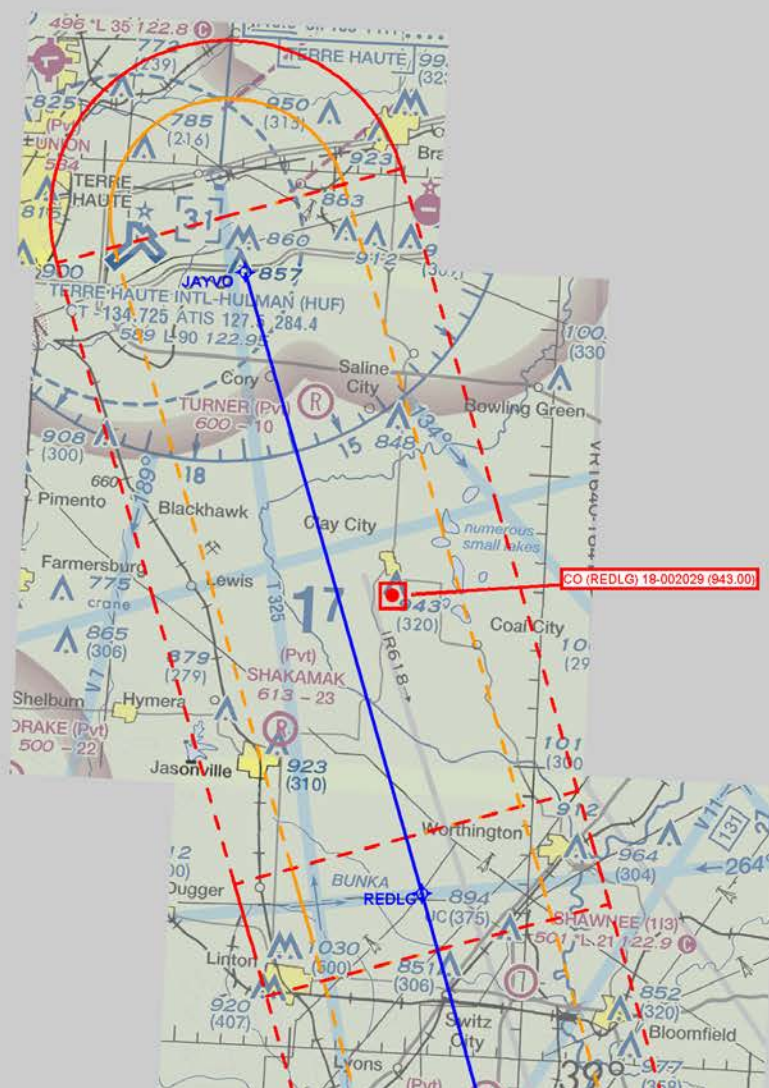
DAMEN (RNAV)

MAP 5 of 7



DAMEN (RNAV)

MAP 6 of 7



DAMEN (RNAV)

MAP 7 of 7