

Flight Procedure Tracking Form		Action: FLIGHT CHECK	Task Type: GRAPHICAL DP	Date Open: 11/21/2014	Task #: 2014112130391503001	Request #: 20141121303915
Procedure: LAWRENCE SEVEN LAWRENCE MA KLWM			Airport ID: KLWM	Airport: LAWRENCE MUNI		Reimbursable #: NO
City: LAWRENCE	ST: MA	GPS #:	Estimated Chart Date: 05/26/2016		FICO #:	
Fac ID: N/A		Fac. Type:			Specialist: PETER GUIMOND	
Procedure Review						
	Rec'd	Rel'd	Full Name	Comments		
Lead:	11/13/2015			<div style="border: 2px solid green; padding: 5px; text-align: center;"> APPROVED <i>By Eugene J Newton at 9:53 am, Jan 27, 2016</i> </div>		
QA:						
Liaison:						
Procedure Comments:			ENROUTE	Remark Type: INFORMATION		
SPECIAL FLIGHT CHECK INSTRUCTIONS: ABBREVIATED AMENDMENT, REQUEST TABLETOP REVIEW.						

LAWRENCE, MASSACHUSETTS (LWM)

NOTE: Chart not to scale.

(NARRATIVE ON FOLLOWING PAGE)

(NOTES ON FOLLOWING PAGE)

TOP ALTITUDE:
2000

PROTOTYPE: NOT
FOR NAVIGATION

NOTE: Chart not to scale

LAWRENCE, MASSACHUSETTS
LAWRENCE MUNI (LWM)

FIG (LWM7.LWM)

LAWRENCE SEVEN DEPARTURE



DEPARTURE ROUTE DESCRIPTION

TAKEOFF RUNWAYS 14, 23, 32: Climb heading as assigned by ATC, Thence

TAKEOFF RUNWAY 5: Climb heading 053° to 1100, then as assigned by ATC, Thence

. . . Expect radar vectors to assigned route/navaid/fix. Maintain 2000.

Expect clearance to filed altitude/flight level within ten (10) minutes after departure.

TAKEOFF MINIMUMS:

Rwy 5: 300-1½ or standard with minimum climb of 419' per NM to 500.

Rwy 14: 300-1 or standard with minimum climb of 601' per NM to 600.

Rwy 23: 300-1 or standard with minimum climb of 334' per NM to 400.

Rwy 32: Standard.

NOTE: Radar required.

NOTE: Non RNAV equipped aircraft can expect vectors on assigned route.

NOTE: BLZZR DEPARTURES expect vectors on BOS R-273, DME required.

NOTE: BRUWN DEPARTURES expect vectors on BOS R-159, DME required.

NOTE: CELTK DEPARTURES expect vectors on BOS R-114.

NOTE: HYLND DEPARTURES expect vectors on BOS R-350.

NOTE: PATSS DEPARTURES expect vectors on BOS R-260, DME required.

NOTE: REVSS DEPARTURES expect vectors on BOS R-285, DME required.

NOTE: SSOXS DEPARTURES expect vectors on BOS R-177.

TAKEOFF OBSTACLE NOTES:

Rwy 5: Trees beginning 288' from DER, 44' left of centerline, up to 86' AGL/282' MSL. Pole and trees beginning 544' from DER, 403' right of centerline, up to 75' AGL/281' MSL. Trees 3731' from DER, 1052' right of centerline, up to 86' AGL/331' MSL. Trees 1.2 NM from DER, 41' right of centerline, up to 89' AGL/354' MSL.

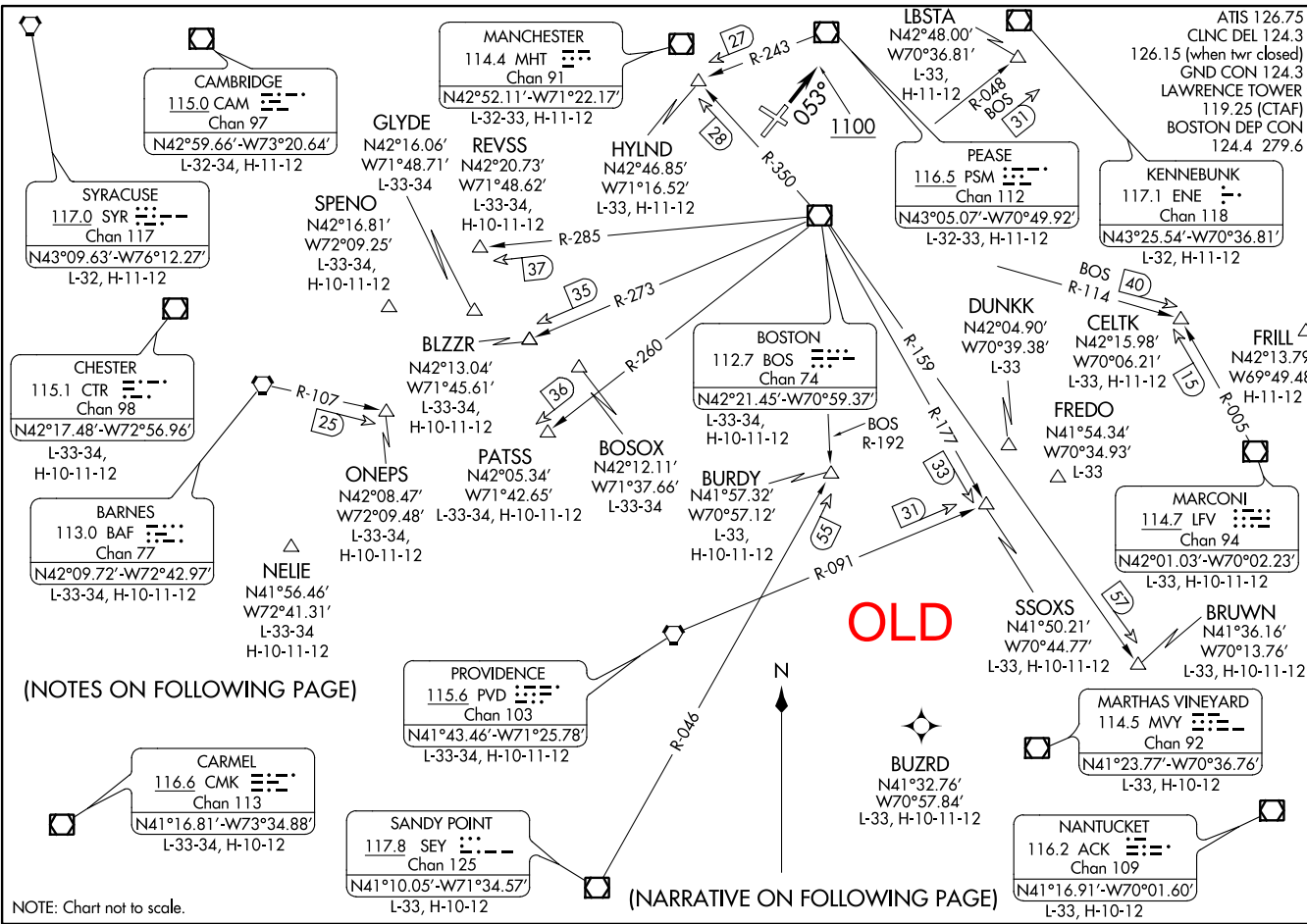
Rwy 14: Bush, pole, and trees beginning 150' from DER, 9' left of centerline, up to 59' AGL/186' MSL. Bush, buildings, poles, and trees beginning 102' from DER, 19' right of centerline, up to 94' AGL/290' MSL. Rod on pole 3473' from DER, 1391' right of centerline, 73' AGL/417' MSL.

Rwy 23: Bush and trees beginning 176' from DER, 464' left of centerline, up to 53' AGL/160' MSL. Bush 117' from DER, 183' right of centerline, up to 13' AGL/140' MSL. Stack 3768' from DER, 1310' right of centerline, 260' AGL/295' MSL.

Rwy 32: Trees 159' from DER, 198' left of centerline, up to 54' AGL/141' MSL. Trees beginning 120' from DER, 156' right of centerline, up to 60' AGL/177' MSL.

PROTOTYPE-NOT FOR NAVIGATION

NE-1, 07 JAN 2016 to 04 FEB 2016



LAWRENCE SIX DEPARTURE



OLD

DEPARTURE ROUTE DESCRIPTION

TAKEOFF RUNWAYS 14, 23, 32: Climb heading as assigned by ATC, Thence . . .
TAKEOFF RUNWAY 5: Climb heading 053° to 1100, then as assigned by
ATC, Thence . . .

. . . Expect radar vectors to assigned route/navaid/fix. Maintain 2000.
Expect clearance to filed altitude/flight level within ten (10) minutes after departure.

TAKEOFF MINIMUMS:

- Rwy 5: 300-1½ or standard with minimum climb of 419' per NM to 500.
- Rwy 14: 300-1 or standard with minimum climb of 601' per NM to 600.
- Rwy 23: 300-1 or standard with minimum climb of 334' per NM to 400.
- Rwy 32: Standard.

- NOTE: Radar required.
- NOTE: Non RNAV equipped aircraft can expect vectors on assigned route.
- NOTE: BLZZR DEPARTURES expect vectors on BOS R-273, DME required.
- NOTE: BRUWN DEPARTURES expect vectors on BOS R-159, DME required.
- NOTE: CELTK DEPARTURES expect vectors on BOS R-114.
- NOTE: HYLND DEPARTURES expect vectors on BOS R-350.
- NOTE: PATSS DEPARTURES expect vectors on BOS R-260, DME required.
- NOTE: REVSS DEPARTURES expect vectors on BOS R-285, DME required.
- NOTE: SSOXS DEPARTURES expect vectors on BOS R-177.

TAKEOFF OBSTACLE NOTES:

- Rwy 5: Trees beginning 288' from DER, 44' left of centerline, up to 86' AGL/282' MSL. Poles and trees beginning 544' from DER, 403' right of centerline, up to 75' AGL/281' MSL. Trees beginning 3731' from DER, 1052' right of centerline, up to 86' AGL/331' MSL. Trees 1.2 NM from DER, 41' right of centerline, up to 89' AGL/354' MSL.
- Rwy 14: Bush, pole, and trees beginning 150' from DER, 9' left of centerline, up to 59' AGL/186' MSL. Bush, poles, buildings, and trees beginning 102' from DER, 19' right of centerline, up to 94' AGL/290' MSL. Rod on pole 3473' from DER, 1391' right of centerline, 73' AGL/417' MSL.
- Rwy 23: Bush and trees beginning 176' from DER, 464' left of centerline, up to 53' AGL/160' MSL. Bush 117' from DER, 183' right of centerline, 13' AGL/140' MSL. Stack 3768' from DER, 1310' right of centerline, 260' AGL/295' MSL.
- Rwy 32: Trees 159' from DER, 198' left of centerline, up to 54' AGL/141' MSL. Trees beginning 120' from DER, 156' right of centerline, up to 60' AGL/177' MSL.

INFO ONLY



Federal Aviation Administration

Memorandum

Date:

To: Manager, Production Integration Team, AJV-34 **Gary L Powell**
From: Manager, Flight Technologies and Procedures Division, AFS-400
Prepared by: Flight Procedure Implementation & Oversight Branch, AFS-460
Subject: Approval Request; AJV-34 Memorandum Dated 01/10/2011

Copyright 2011 by the Federal Aviation Administration
All rights reserved. No part of this publication may be reproduced
without the prior written permission of the Federal Aviation Administration.
This document is the property of the Federal Aviation Administration and is loaned to your agency.
It and its contents are not to be distributed outside your agency.

Your request to utilize a climb gradient(s) of 601 feet per NM on the "LAWRENCE FIVE DEPARTURE" for RWY 14 at Lawrence Muni, Lawrence, MA was discussed at Flight Standards' Procedure Review Board (PRB) and is approved.

Please direct all inquiries to Stacey Zinke, AFS-460, at (405) 954-9359.

Attachments

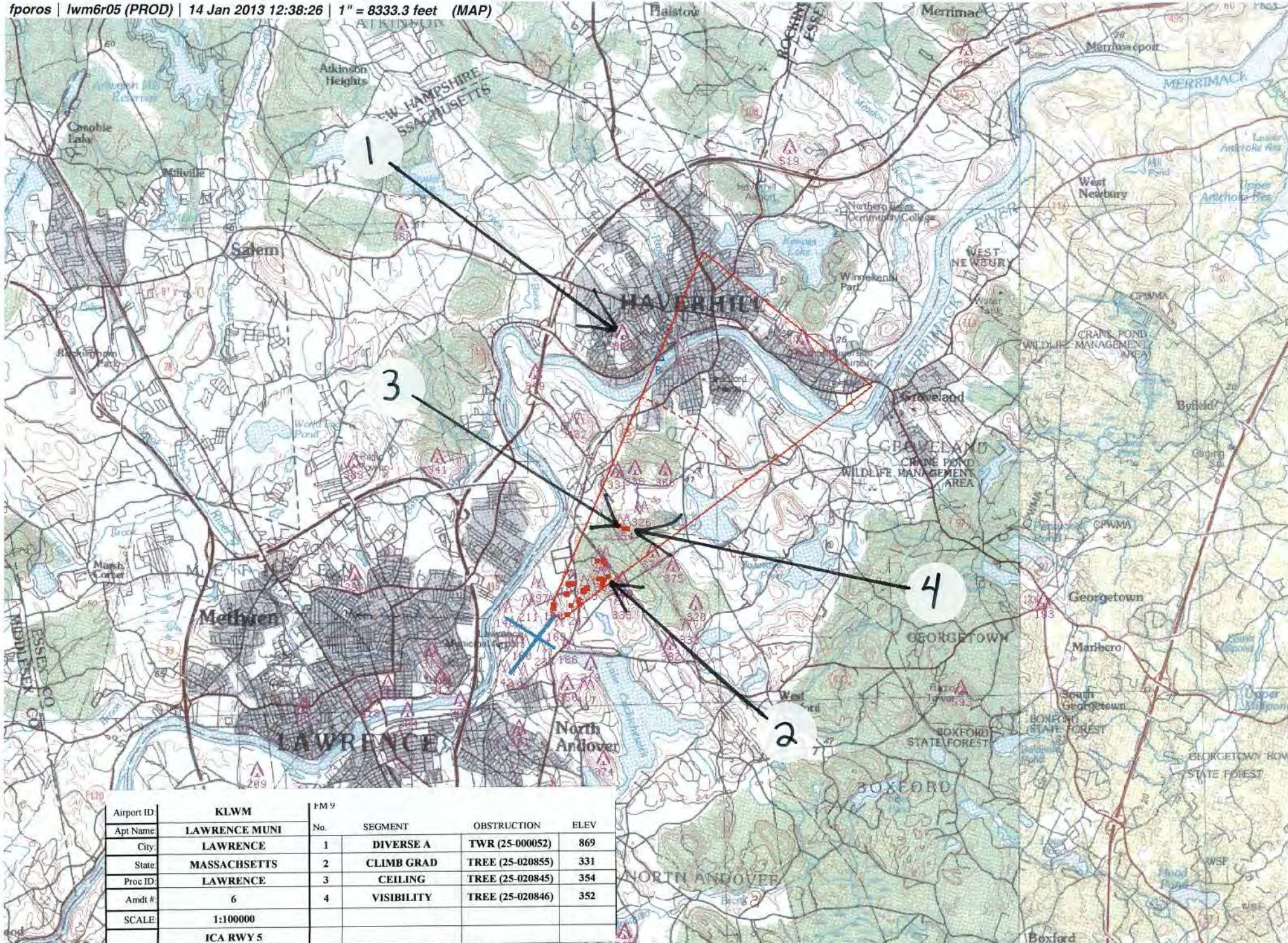
cc:

AJV-34

AEA-220

AFS-400/410/420/440/460/470

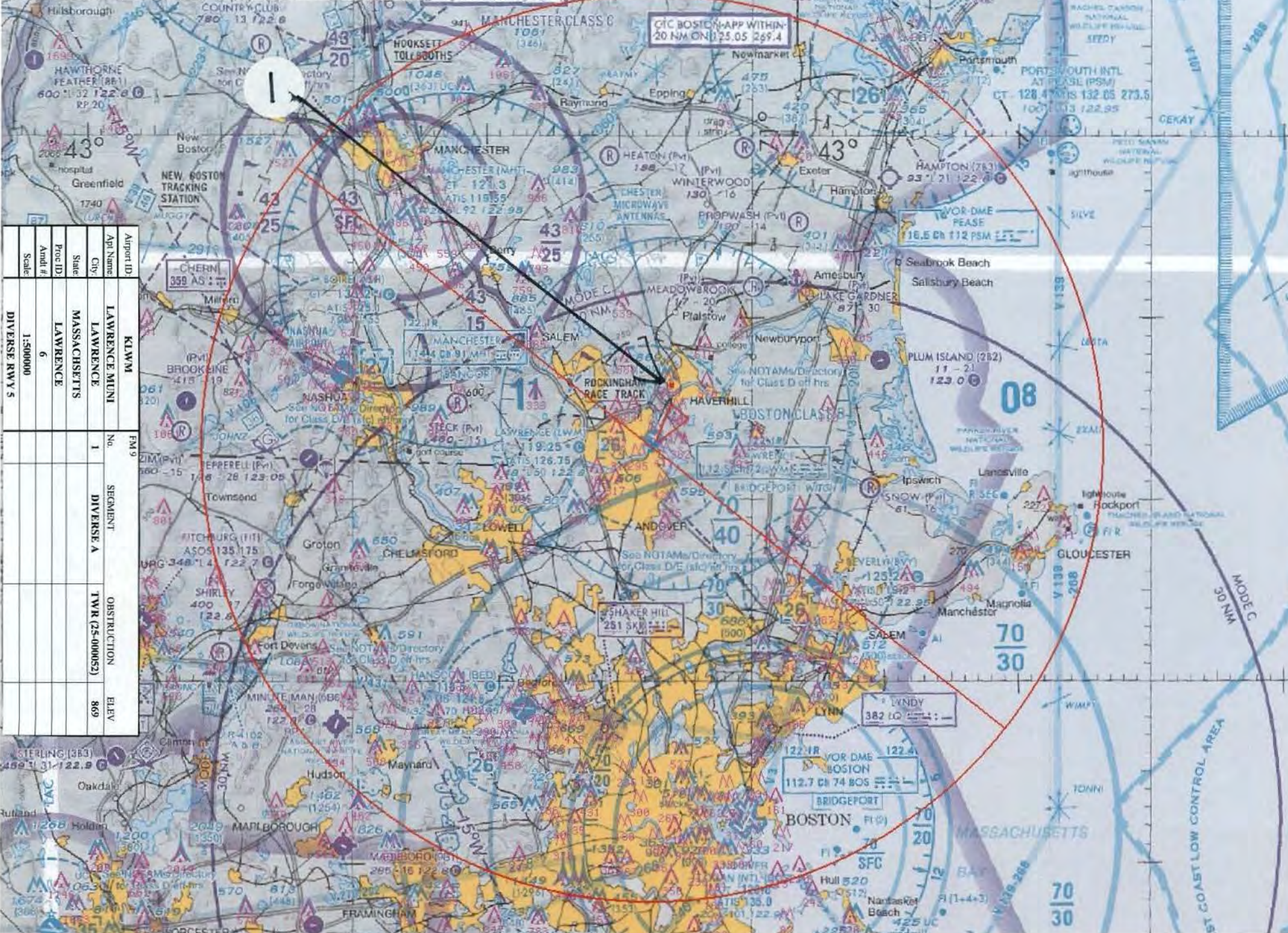
fporos | lwm6r05 (PROD) | 14 Jan 2013 12:38:26 | 1" = 8333.3 feet (MAP)



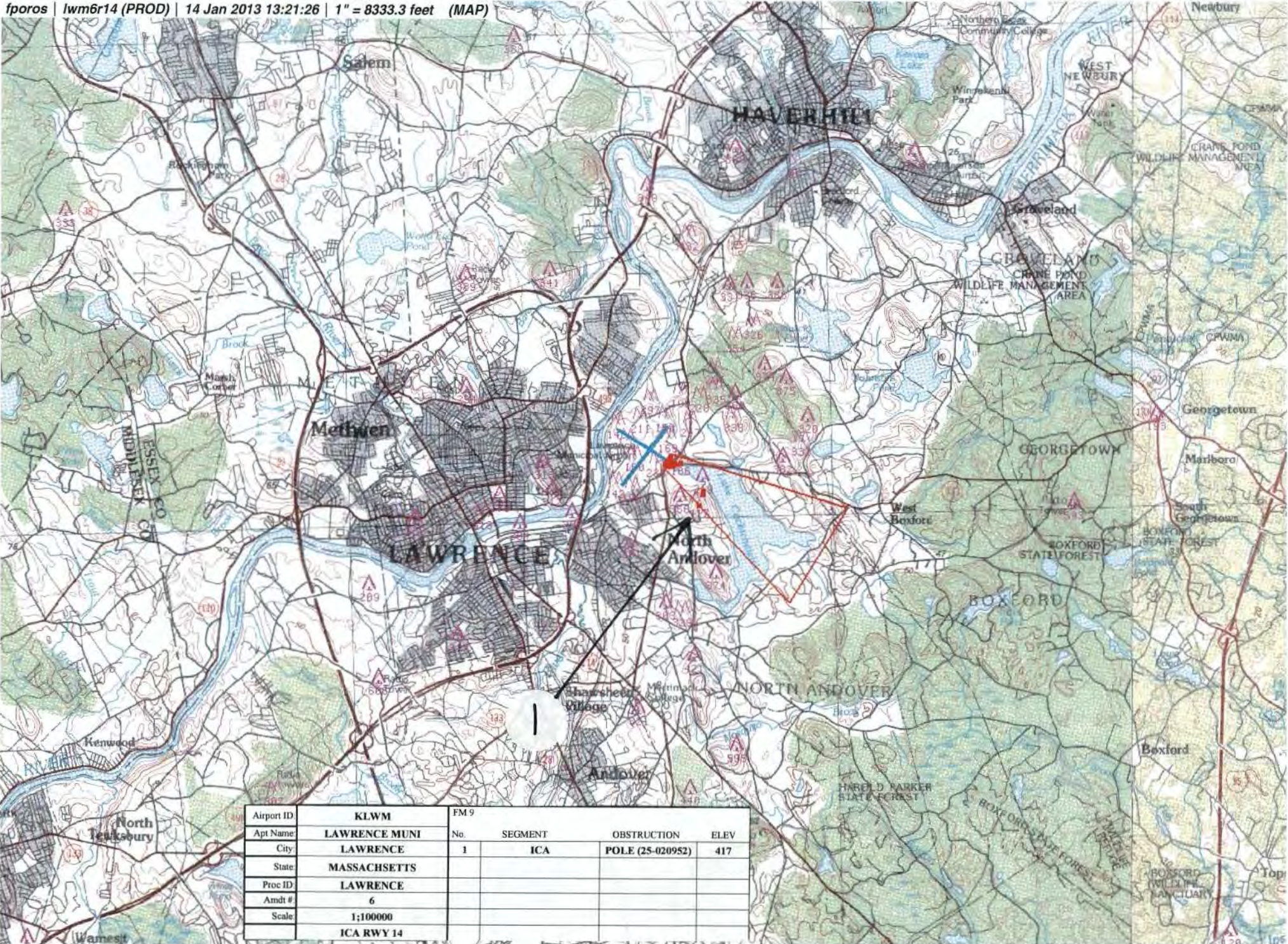
Airport ID	KLWM	FM 9			
Apt Name	LAWRENCE MUNI	No.	SEGMENT	OBSTRUCTION	ELEV
City:	LAWRENCE	1	DIVERSE A	TWR (25-000052)	869
State:	MASSACHUSETTS	2	CLIMB GRAD	TREE (25-020855)	331
Proc ID:	LAWRENCE	3	CEILING	TREE (25-020845)	354
Amdt #:	6	4	VISIBILITY	TREE (25-020846)	352
SCALE	1:100000				
	ICA RWY 5				

NM 7 14 21 28 35 42 49 56 63 70
FT 42000 84000 126000 168000 210000 252000 294000 336000 378000 420000

fporos | lwm6r05 (PROD) | 14 Jan 2013 13:19:16 | 1" = 41750.0 feet (MAP)



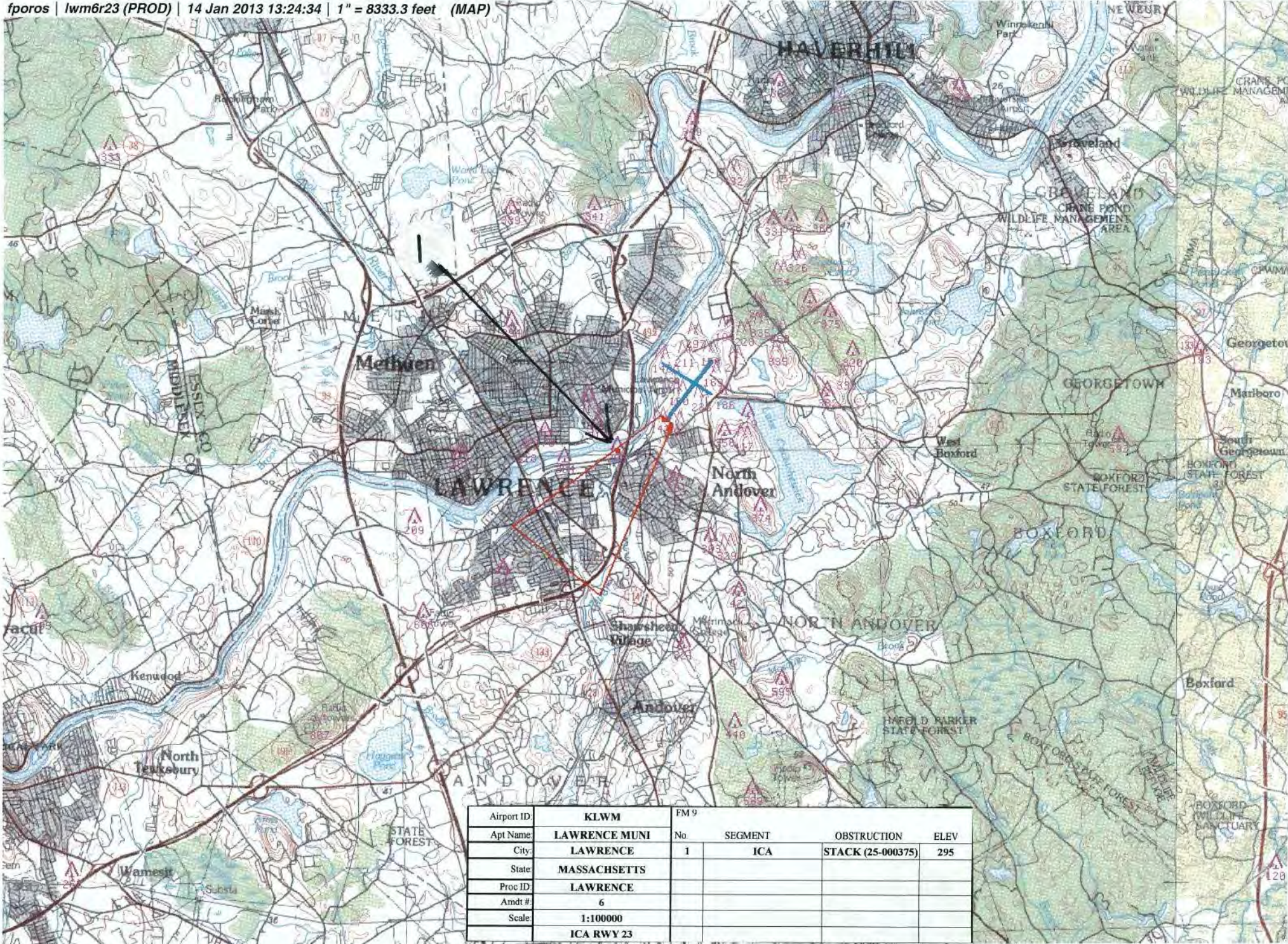
Airport ID	KLWM
Ap Name	LAWRENCE MUNI
City	LAWRENCE
State	MASSACHUSETTS
Proc ID	LAWRENCE
And #	6
Scale	1:500000
DIVERSE RWY 5	
No.	1
SEGMENT	DIVERSE A
OBSTRUCTION	TWR (25-00052)
ELEV	869



Airport ID	KLWM	FM 9			
Apt Name	LAWRENCE MUNI	No.	SEGMENT	OBSTRUCTION	ELEV
City	LAWRENCE	1	ICA	POLE (25-020952)	417
State	MASSACHUSETTS				
Proc ID	LAWRENCE				
Amdt #	6				
Scale	1:100000				
	ICA RWY 14				

fpors | lwm6r14 (PROD) | 14 Jan 2013 13:21:58 | 1" = 41666.7 feet (MAP) PP WITHIN 20 NM ON 124.9 269.075





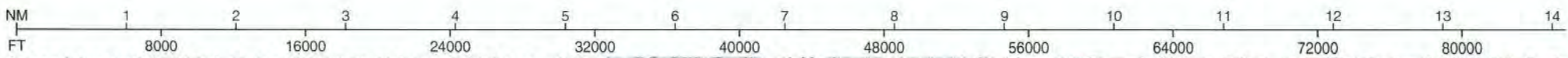
Airport ID	KLWM	FM 9			
Apt Name	LAWRENCE MUNI	No.	SEGMENT	OBSTRUCTION	ELEV
City	LAWRENCE	1	ICA	STACK (25-000375)	295
State	MASSACHUSETTS				
Proc ID	LAWRENCE				
Amdt #	6				
Scale	1:100000				
	ICA RWY 23				

NM 7 14 21 28 35 42 49 56 63 70
FT 42000 84000 126000 168000 210000 252000 294000 336000 378000 420000

fporos | lwm6r23 (PROD) | 14 Jan 2013 13:24:59 | 1" = 41666.7 feet (MAP)



Airport ID	KTWM	PM 9	SEGMENT	OBSTRUCTION	ELEV
Ap Name	LAWRENCE MUNI	No			
City	LAWRENCE				
State	MASSACHUSETTS				
Proc ID	LAWRENCE				
And #	6				
Scale	1:50000				
	DIVERSE RWY 23				



Airport ID:	KLWM	FM 9			
Apt Name:	LAWRENCE MUNI	No.	SEGMENT	OBSTRUCTION	ELEV
City:	LAWRENCE			LOW CLOSE-IN	
State:	MASSACHUSETTS				
Proc ID:	LAWRENCE				
Amdt #:	6				
Scale:	1:100000				
	ICA RWY 32				

Report ID	RLWM	No	SEGMENT	OBSTRUCTION	ELEV
Appl Name	LAWRENCE MUNI			ASC	
City	LAWRENCE				
State	MASSACHUSETTS				
Plot ID	LAWRENCE				
Ampl #	6				
Scale	1:5000000				
	DIVERSE RMY 32				