

<b>Flight Procedure Tracking Form</b>		<b>Action:</b> FLIGHT CHECK	<b>Task Type:</b> IAP	<b>Date Open:</b> 11/19/2014	<b>Task #:</b> 2014111928488901004	<b>Request #:</b> 20141119284889
<b>Procedure:</b> RNAV (GPS) RWY 26 AMDT 3			<b>Airport ID:</b> PAGA	<b>Airport:</b> EDWARD G PITKA SR		<b>Reimbursable #:</b> NO
<b>City:</b> GALENA	<b>ST:</b> AK	<b>GPS #:</b>	<b>Estimated Chart Date:</b> 09/13/2018		<b>FICO #:</b>	
<b>Fac ID:</b> N/A		<b>Fac. Type:</b>		<b>Specialist:</b> ANTHONY KACZKA		
<b>Procedure Review</b>						
	<b>Rec'd</b>	<b>Rel'd</b>	<b>Full Name</b>	<b>Comments</b>		
<b>Lead:</b>	02/14/2018			QUALITY		
<b>QA:</b>				24		
<b>Liaison:</b>				CHECKED		
<b>Procedure Comments:</b>			<b>Remark Type:</b> INFORMATION			
<p>HARD DATE</p> <p>ASSIGNED MAGVAR: PAGA: OLD 17E - NEW 13E</p> <p>PENDING DATA USED FOR PAGA AIRPORT AND RUNWAYS</p> <p>CONTACT: PAT MULQUEEN 405-954-4073 OR ADOLFO URRUTIA 405-954-2079</p>						

WAAS CH <b>77707</b> <b>W26A</b>	APP CRS <b>257°</b>	Rwy Idg <b>7249</b> TDZE <b>154</b> Apt Elev <b>154</b>
--	------------------------	---

RNAV (GPS) RWY 26  
EDWARD G PITKA SR (GAL)(PAGA)

RNP APCH

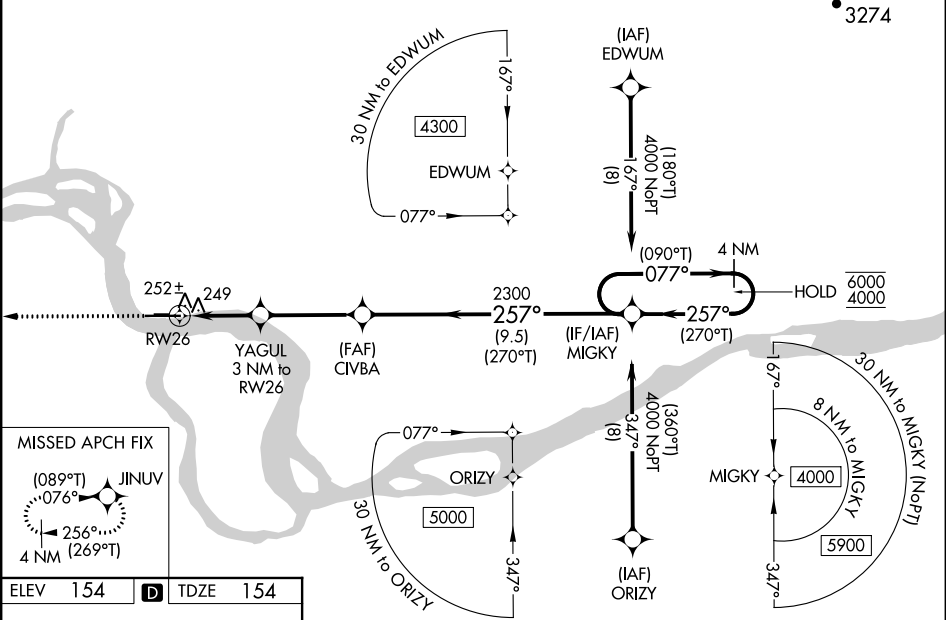
-33°C

For uncompensated Baro-VNAV systems, LNAV/VNAV NA below -20°C or above 54°C.

MISSED APPROACH: Climb to 3600 direct JINUV and hold. Continue climb-in-hold to 3600.

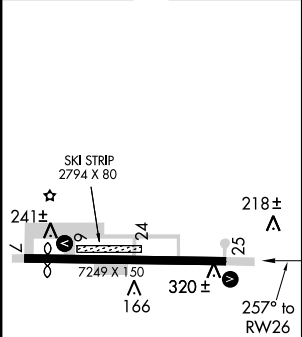
AWOS-3 <b>132.525</b>	ANCHORAGE CENTER <b>127.0 290.2</b>	FAIRBANKS RADIO <b>122.2</b>	CTAF <b>123.0</b>
--------------------------	--	---------------------------------	----------------------

PROTOTYPE-NOT FOR NAVIGATION



MISSED APCH FIX

ELEV <b>154</b>		TDZE <b>154</b>
-----------------	--	-----------------



REIL Rwy 7   
HIRL Rwy 7-26

3600 JINUV				
* LNAV only				
* 1 NM to RW26				
YAGUL 3 NM to RW26				
CIVBA 2300				
MIGKY 257° (270°T) 4 NM Holding Pattern				
GP 3.00° TCH 42				
CATEGORY	A	B	C	D
LPV DA	404-1 250 (300-1)			
LNAV/VNAV DA	414-1 260 (300-1)			
LNAV MDA	520-1 366 (400-1)			
CIRCLING	560-1 406 (500-1)	620-1 466 (500-1)	620-1½ 466 (500-1½)	720-2 566 (600-2)

# OLD

GALENA, ALASKA

AL-1229 (FAA)

14317

WAAS CH <b>77707</b> <b>W25A</b>	APP CRS <b>253°</b>	Rwy Idg <b>7249</b> TDZE <b>153</b> Apt Elev <b>153</b>
--	------------------------	---

## RNAV (GPS) RWY 25

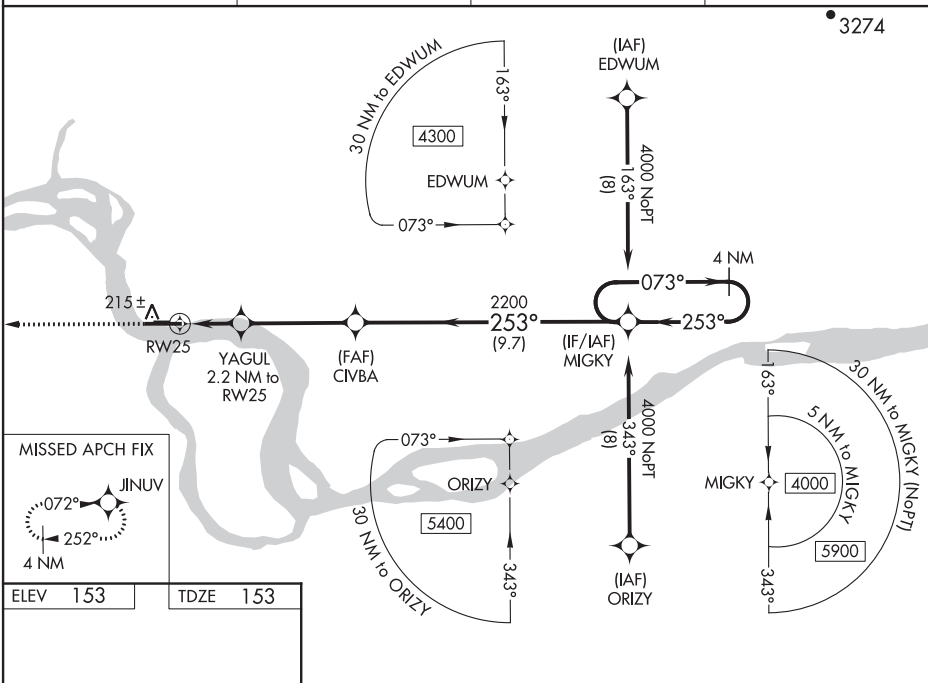
EDWARD G. PITKA SR (GAL)(PAGA)

**⚠** For uncompensated Baro-VNAV systems, LNAV/VNAV NA below -25°C (-13°F) or above 42°C (109°F). DME/DME RNP-0.3 NA. Helicopter visibility reduction below 1 SM NA. Baro-VNAV NA when using Ruby altimeter setting. When local altimeter setting not received, use Ruby altimeter setting: increase LPV DA to 561 feet and visibility  $\frac{3}{8}$  mile all Cats; increase LNAV/VNAV DA to 639 feet and visibility  $\frac{1}{2}$  mile all Cats; increase all MDA 160 feet and visibility LNAV Cat C and D  $\frac{1}{2}$  mile; Circling C and D  $\frac{1}{4}$  mile. Procedure NA at night.

MISSED APPROACH: Climb to 3600 direct JINUV and hold.

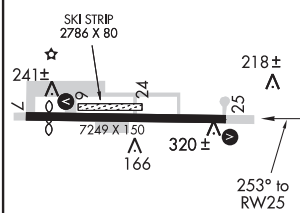
AWOS-3 <b>132.525</b>	ANCHORAGE CENTER <b>127.0 290.2</b>	FAIRBANKS RADIO <b>122.2</b>	CTAF <b>123.0</b>
--------------------------	--	---------------------------------	----------------------

AK, 13 NOV 2014 to 08 JAN 2015



AK, 13 NOV 2014 to 08 JAN 2015

ELEV 153	TDZE 153
----------	----------



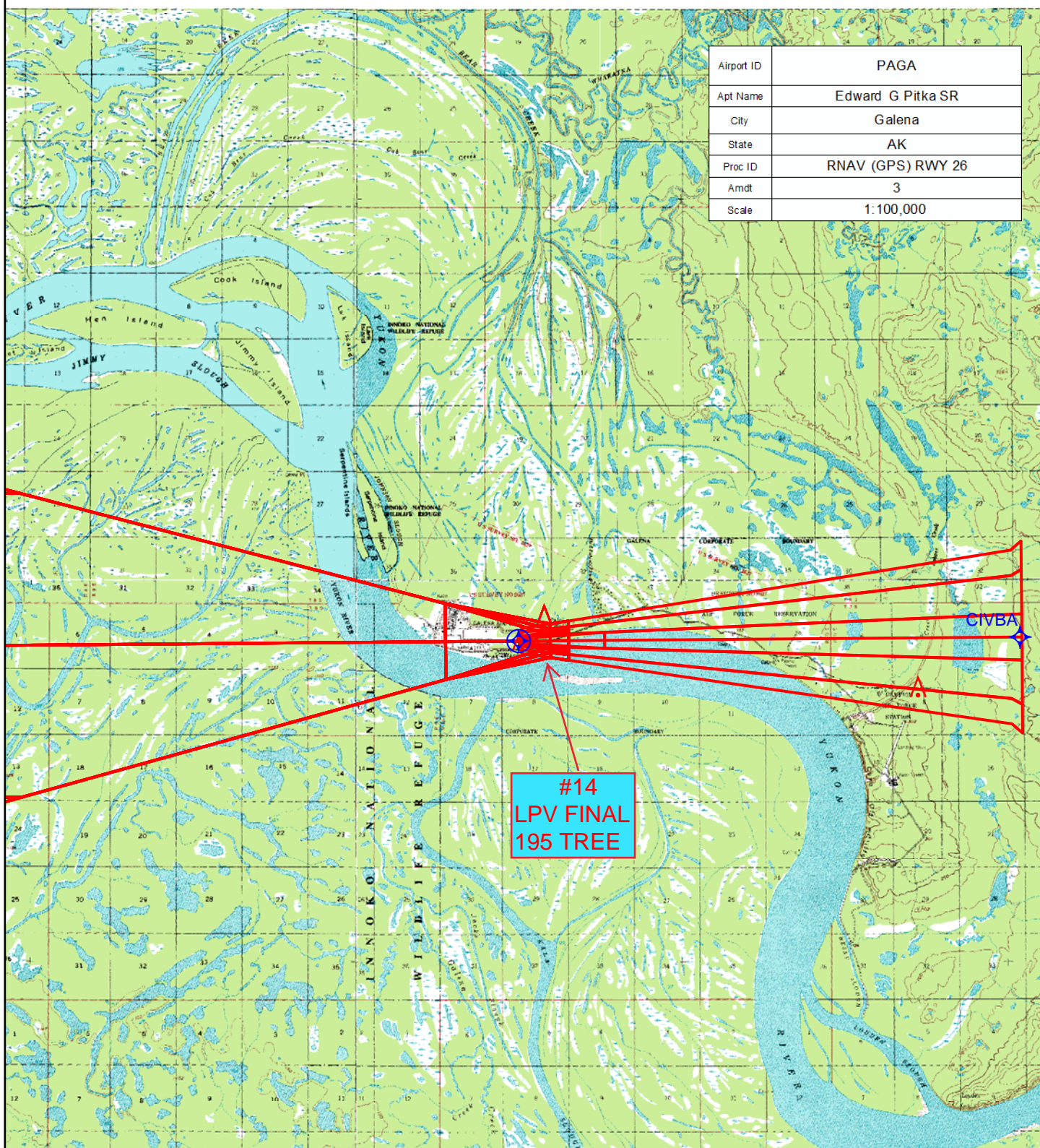
REIL Rwy 7 **0**  
HIRL Rwy 7-25 **0**  
GALENA, ALASKA  
Amdt 2B 13NOV14

3600	JINUV	VGSI and RNAV glidepath not coincident (VGSI Angle 3.00/TCH 42).	MIGKY	4 NM Holding Pattern
* LNAV only	YAGUL 2.2 NM to RW25	2200	253°	073°
	900*	2200	253°	4000
	2.2 NM	4.1 NM	9.7 NM	GS 3.00° TCH 50
CATEGORY	A	B	C	D
LPV DA	403-1	250 (300-1)		
LNAV/VNAV DA	481-1 $\frac{1}{8}$	328 (400-1 $\frac{1}{8}$ )		
LNAV MDA	580-1	427 (500-1)	580-1 $\frac{1}{4}$	427 (500-1 $\frac{1}{4}$ )
CIRCLING	620-1	467 (500-1)	620-1 $\frac{1}{2}$ 467 (500-1 $\frac{1}{2}$ )	720-2 567 (600-2)

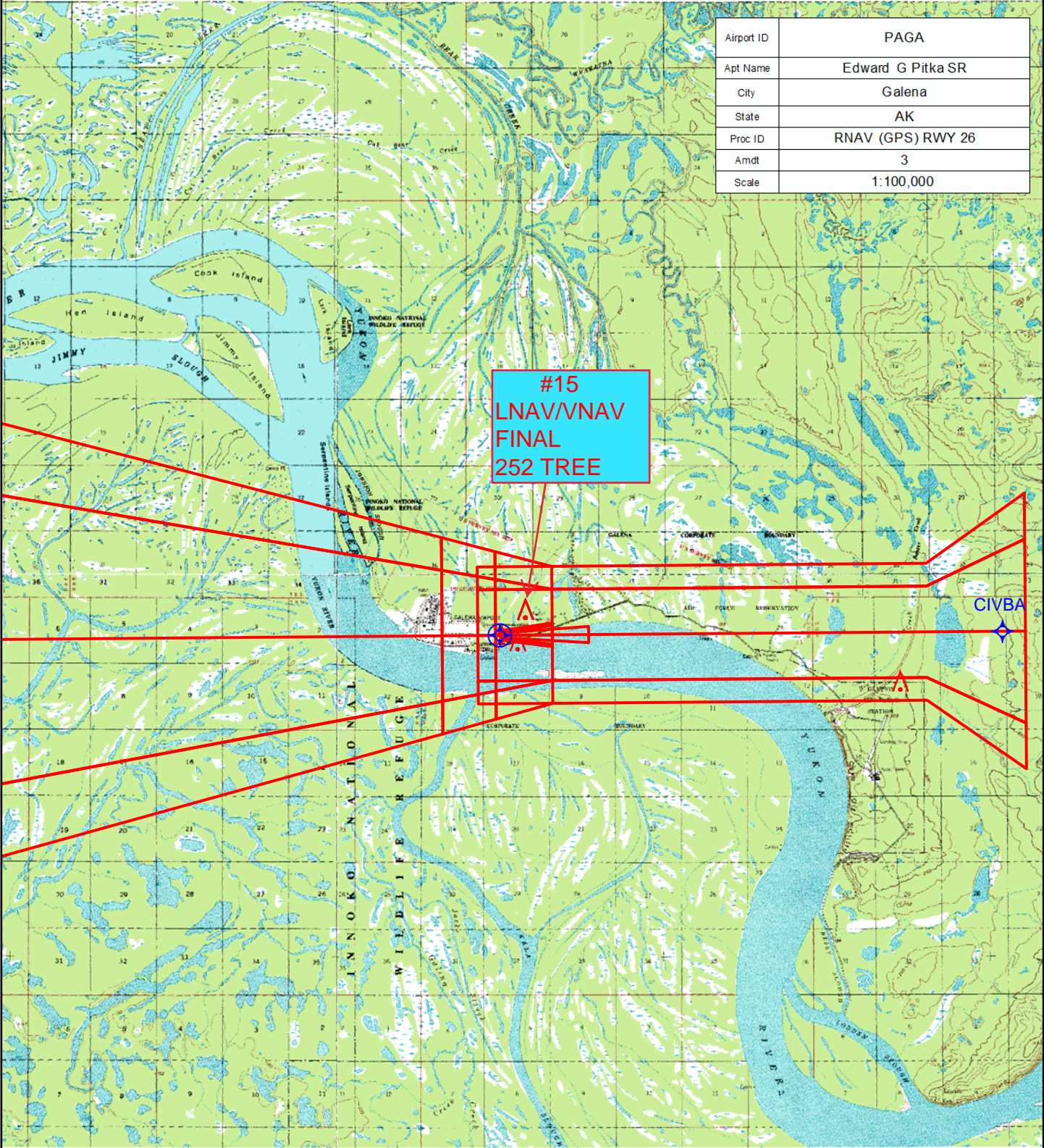
EDWARD G. PITKA SR (GAL)(PAGA)  
**RNAV (GPS) RWY 25**

64°44'N-156°56'W

Airport ID	PAGA
Apt Name	Edward G Pitka SR
City	Galena
State	AK
Proc ID	RNAV (GPS) RWY 26
Amdt	3
Scale	1:100,000



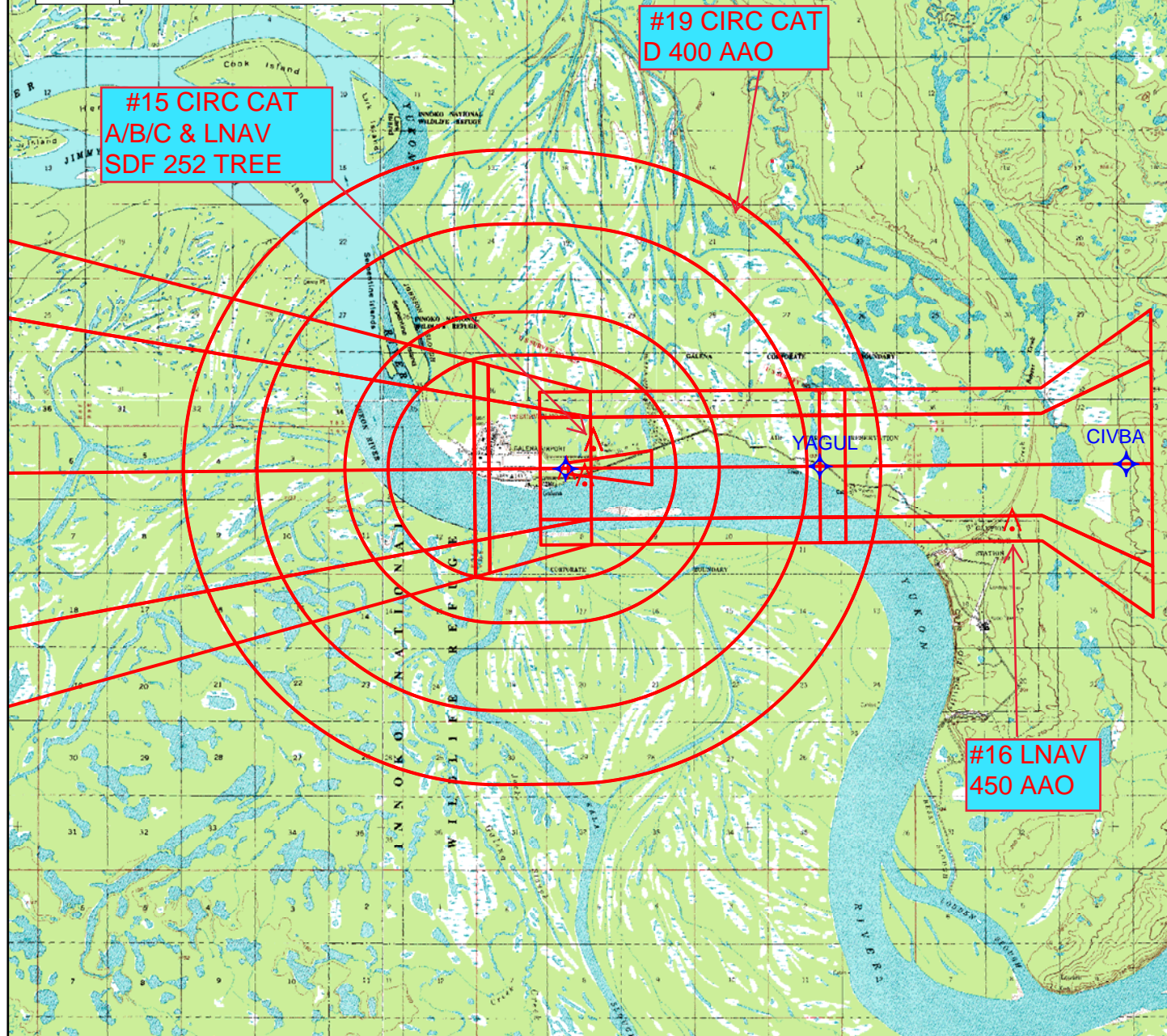




Airport ID	PAGA
Apt Name	Edward G Pitka SR
City	Galena
State	AK
Proc ID	RNAV (GPS) RWY 26
Amdt	3
Scale	1:100,000

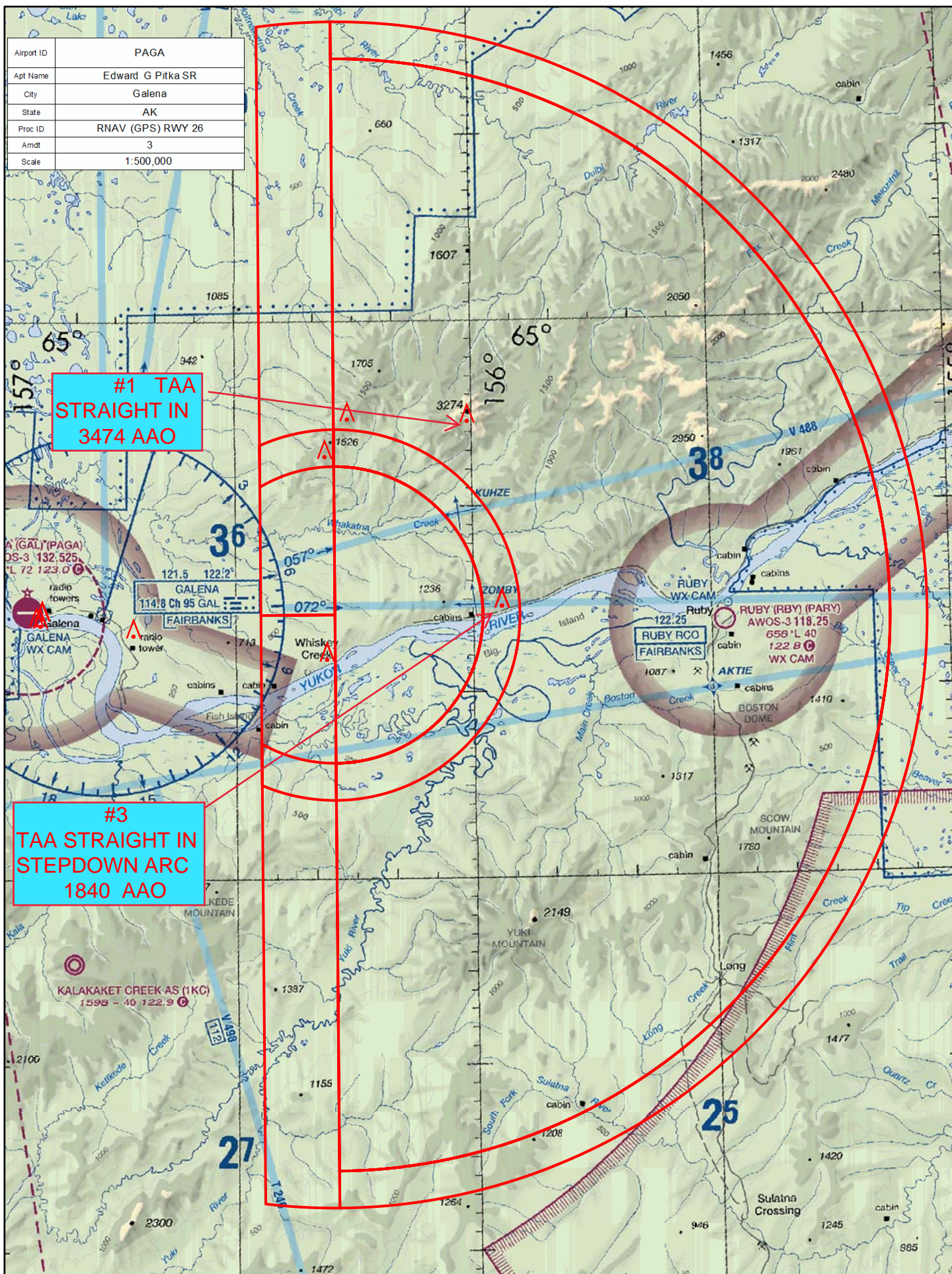


Airport ID	PAGA
Apt Name	Edward G Pitka SR
City	Galena
State	AK
Proc ID	RNAV (GPS) RWY 26
Amdt	3
Scale	1:100,000



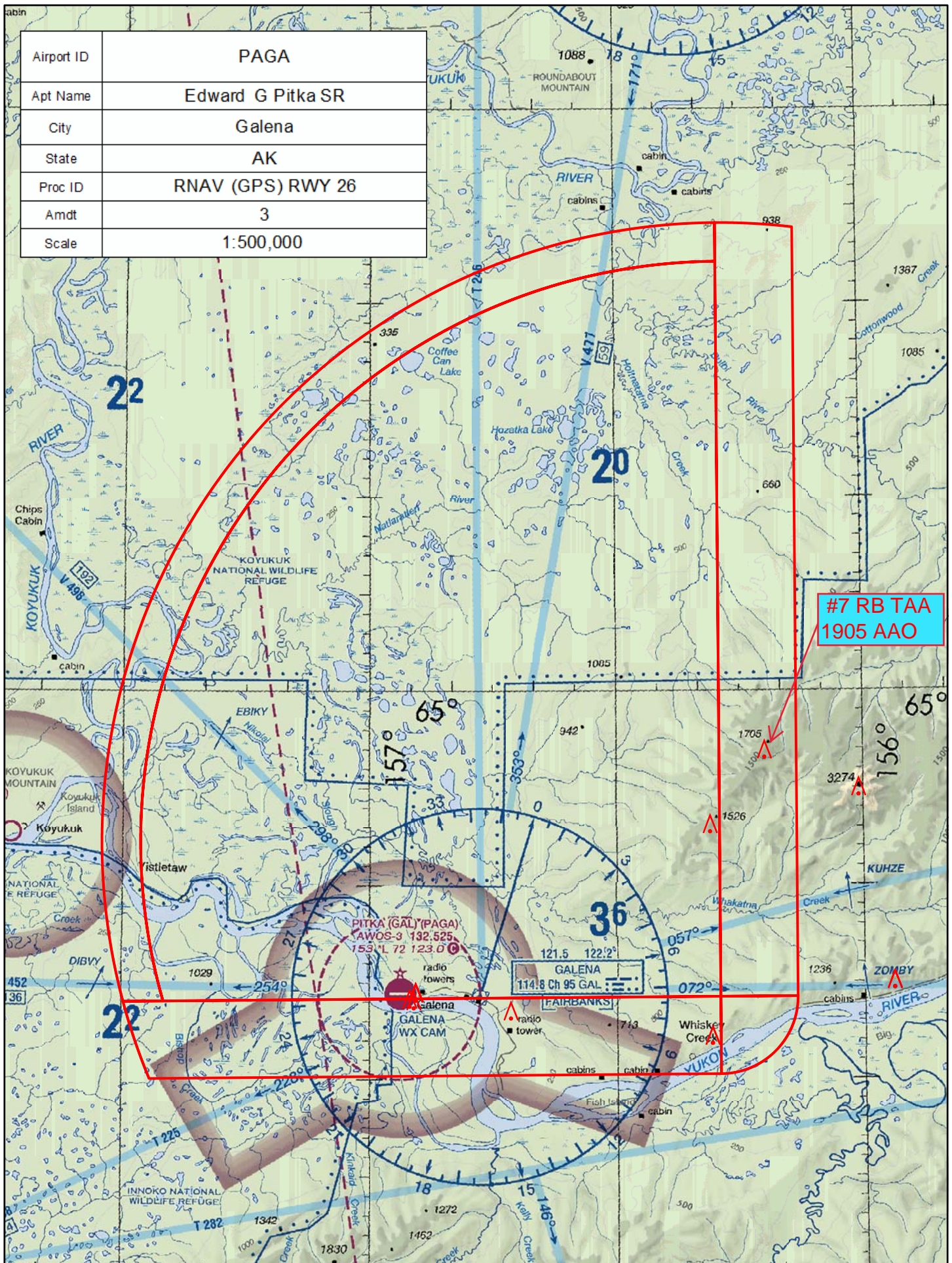


Airport ID	PAGA
Apt Name	Edward G Pitka SR
City	Galena
State	AK
Proc ID	RNAV (GPS) RWY 26
Amdt	3
Scale	1:500,000





Airport ID	PAGA
Apt Name	Edward G Pitka SR
City	Galena
State	AK
Proc ID	RNAV (GPS) RWY 26
Amdt	3
Scale	1:500,000

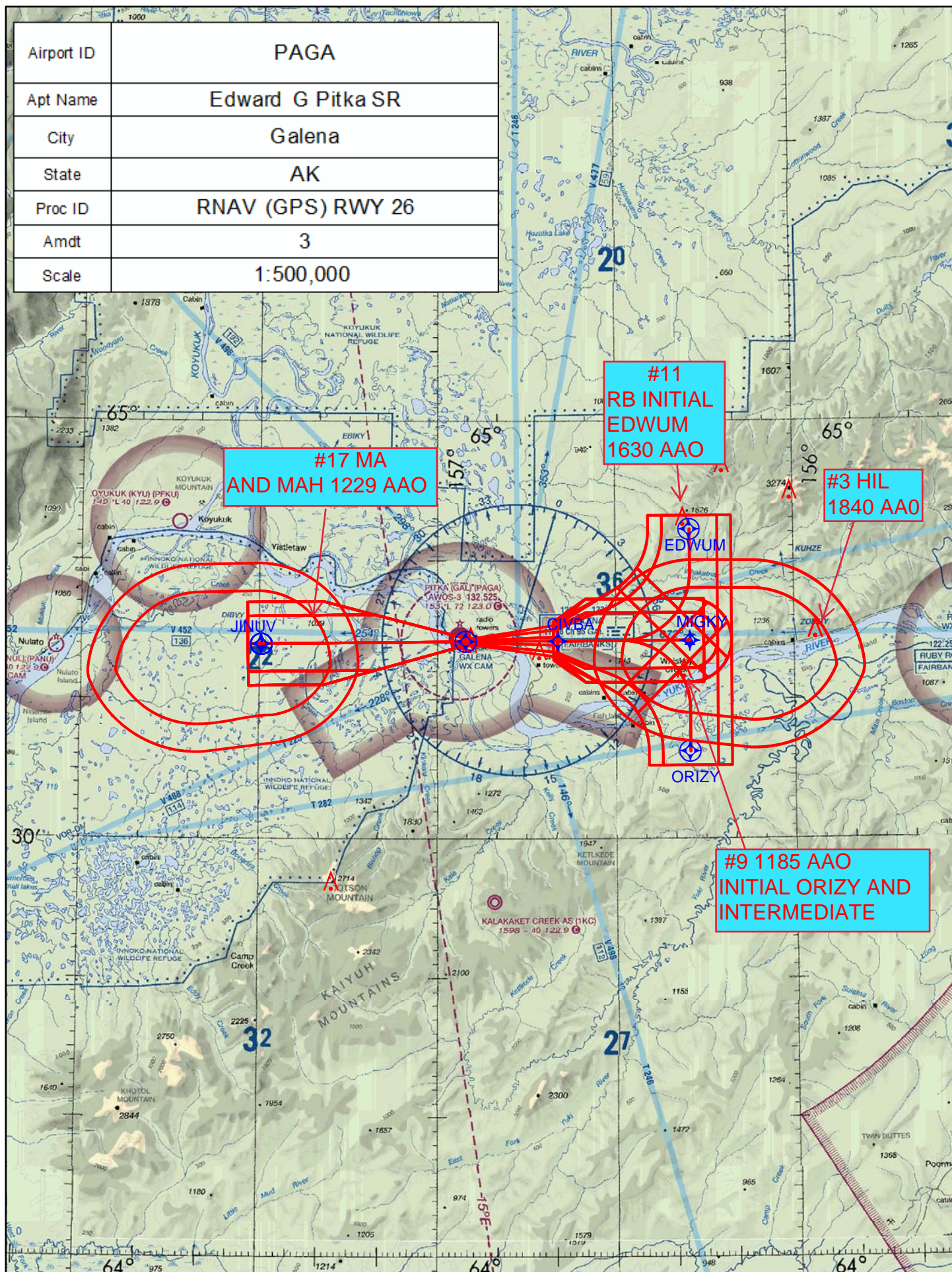








Airport ID	PAGA
Apt Name	Edward G Pitka SR
City	Galena
State	AK
Proc ID	RNAV (GPS) RWY 26
Amdt	3
Scale	1:500,000









**DEPARTMENT OF TRANSPORTATION  
FEDERAL AVIATION ADMINISTRATION  
CATEGORICAL EXCLUSION DECLARATION**

**Edward G. Pitka Sr. Airport**

**RNAV (GPS) RUNWAY 08  
RNAV (GPS) RUNWAY 26  
Textual (Obstacle) Departure Procedure**

**Description of Action:**

The FAA is proposing to amend three procedures for the Edward G. Pitka Sr. Airport (PAGA) in Galena, Alaska. Magnetic Variation (MagVar) updates to the Airport necessitate renumbering of the runways, Runway 07/25 will be renumbered as Runway 08/26. As part of the Airport Improvement Plan, construction will relocate both runway thresholds and shorten the runway to 6,000 feet. The following procedures are proposed for amendment:

1. Area Navigation (RNAV) (Global Positioning System [GPS]) Runway (RWY) 07.
2. RNAV (GPS) RWY 25.
3. Textual (Obstacle) Departure (ODP).

Procedure specific amendments are described below:

1. RNAV (GPS) RWY 07
  - a. Rename procedure as RNAV (GPS) RWY 08.
  - b. Update references to reflect new runway number "08".
  - c. Lower Threshold Crossing Height (TCH) from 45 feet above ground level (AGL) to 42 feet AGL.
  - d. Revise Glidepath Angle (GPA) from 3.00 degrees (°) to 3.07°
  - e. Remove right base 8 nautical mile (NM) stepdown arc from the Terminal Arrival Area.
  - f. Raise the altitude of the Final Approach Fix (FAF) from 2,200 feet above mean sea level (MSL) to 2,300 feet MSL.
  - g. Move stepdown fix 0.7 NM east along its existing track. Increase altitude from 900 feet MSL to 1,080 feet MSL.
  - h. Update lines of minima for Localizer Performance with Vertical Guidance (LPV), Lateral Navigation/Vertical Navigation (LNAV/VNAV), LNAV, and Circling to meet current criteria.
  - i. Amend Missed Approach (MA).
2. RNAV (GPS) RWY 25:
  - a. Rename procedure as RNAV (GPS) RWY 26.
  - b. Update references to reflect new runway number "26".
  - c. Revise GPA from 3.00° to 3.09°
  - d. Revise stepdown arc from 5 NM to 8 NM.
  - e. Raise the altitude of the Final Approach Fix (FAF) from 2,200 feet above mean sea level (MSL) to 2,300 feet MSL.
  - f. Move stepdown fix 0.7 NM west along its existing track. Increase altitude from 900 feet MSL to 1,080 feet MSL.



- g. Update lines of minima for Localizer Performance with Vertical Guidance (LPV), Lateral Navigation/Vertical Navigation (LNAV/VNAV), LNAV, and Circling to meet current criteria.
- h. Amend Missed Approach (MA).

### 3. Update Textual ODP

Operations will not exceed 90,000 annual propeller operations or 700 annual jet operations; therefore, in accordance with Paragraph 11.1.2. (FAA Order 1050.1F, Desk Reference) noise analysis is not required.

#### **Declaration of Exclusion:**

The FAA has reviewed the above referenced proposed action and it has been determined, by the undersigned, to be categorically excluded from further environmental documentation according to FAA Order 1050.1F, “Environmental Impacts: Policies and Procedures.” The implementation of this action will not result in any extraordinary circumstances in accordance with FAA Order 1050.1F.

#### **Basis for this Determination:**

The Aircraft Procedure Environmental Pre-Screening Filter Form was processed and reviewed by the Western Service Center. This review was conducted in accordance with policies and procedures in Department of Transportation Order 5610.1C, “Procedures for Considering Environmental Impacts” and FAA Order 1050.1F.

The proposed procedure meets the following categorical exclusion contained in FAA Order 1050.1F:

*5-6.5.i. Establishment of new or revised air traffic control procedures conducted at 3,000 feet or more above ground level (AGL); procedures conducted below 3,000 feet AGL that do not cause traffic to be routinely routed over noise sensitive areas; modifications to currently approved procedures conducted below 3,000 feet AGL that do not significantly increase noise over noise sensitive areas; and increases in minimum altitudes and landing minima.*

**Facility Manager Review/Concurrence**

Signature: PAUL A MCEWEN Date: Dec. 20, 2017  
Name: Paul McEwen  
Air Traffic Manager  
Anchorage Air Route Traffic Control Center, WNA-ZAN

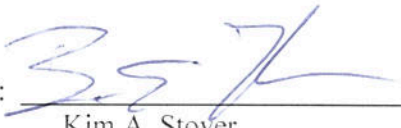
**Concurrence by:**

**Western Service Area Environmental Specialist**

Signature: Katherin Mariann Matolcsy Date: \_\_\_\_\_  
Name: Signed by K. Matolcsy (NISC Contract Support) for:  
Marina Landis  
Environmental Protection Specialist, Operations Support Group  
Western Service Area, AJV-W22

**Approval by:**

**Western Service Area Director or Designee Approval**

Signature:  Date: 11/10/18  
Name: Kim A. Stover  
Director, Air Traffic Operations, North/Acting South  
Western Service Area, AJTWN



# Federal Aviation Administration

## Initial Development Notification for AIRNAV Pending Records

To: Janet Myers, National Flight Data Center, Sub Team B, AJV-5332

From: Lonnie Everhart, Manager IFP Coordination Team, AJV-531

Subject: **ACTION:** Request for Pending Records **PAGA\_GAL\_\_EDWARD G PITKA SR, GALENA, AK US**

The Magnetic Variation (MV) data for the airport(s) and/or facility(s) listed will be revised effective concurrent with the publication of the procedure(s) listed below. Estimated Chart Date: 9/13/2018

Current/Assigned MV    New MV

ECD	Airport ID		Procedure Name	AMDT #	Task Report Type Selections
9/13/2018	PAGA	GAL	GALENA AK PAGA AMDT 1	/A	ENROUTE, FPT-INITIATED, MAGVAR
9/13/2018	PAGA	GAL	RNAV (GPS) RWY 26 AMDT 3	/A	ENROUTE-NON, FPT-INITIATED, MAGVAR
9/13/2018	PAGA	GAL	RNAV (GPS) RWY 8 AMDT 3	/A	ENROUTE-NON, FPT-INITIATED, MAGVAR

NAVAID ID / RWY	Type / Old No.	Use / New RWY/Note
RWY	25	26
RWY	07	08

RWY NUMBERS WILL BE UPDATED.

If you have any questions please notify: [lonnie.everhart@faa.gov](mailto:lonnie.everhart@faa.gov)

(405) 954-4576

Processed Thursday, April 12, 2018