

Flight Procedure Tracking Form		Action: FLIGHT CHECK	Task Type: IAP	Date Open: 02/20/2015	Task #: 201411143086431M001	Request #: 20141114308643
Procedure: RNAV (GPS) RWY 34 AMDT 2				Airport ID: KEMV	Airport: EMPORIA-GREENSVILLE RGNL	Reimbursable #: NO
City: EMPORIA	ST: VA	GPS #:	Estimated Chart Date: 06/22/2017		FICO #:	
Fac ID: N/A		Fac. Type:			Specialist: JASON KRETSCHMER	
Procedure Review						
	Rec'd	Rel'd	Full Name	Comments		
Lead:	12/19/2016	02/10/2017	DANIEL OLSON	QUALITY Digitally signed by		
QA:	02/10/2017	02/13/2017	DAVID SAUER	24 DAVID W SAUER		
Liaison:				CHECKED Mar 23, 2017		
Procedure Comments:			ENROUTE-NON	Remark Type: INFORMATION		
CONTACT: DANNY OLSON AJV-5423, 405.954.3255						

WAAS CH 63226 W34A	APP CRS 335°	Rwy Idg TDZE Apt Elev	5010 122 127
--	------------------------	-----------------------------	---

RNAV (GPS) RWY 34

EMPORIA-GREENSVILLE RGNL (EMV)



For uncompensated Baro-VNAV systems, LNAV/VNAV NA below -1.5°C (5°F) or above 54°C (130°F).
DME/DME RNP-0.3 NA.

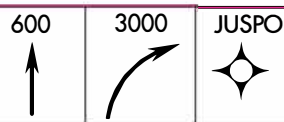
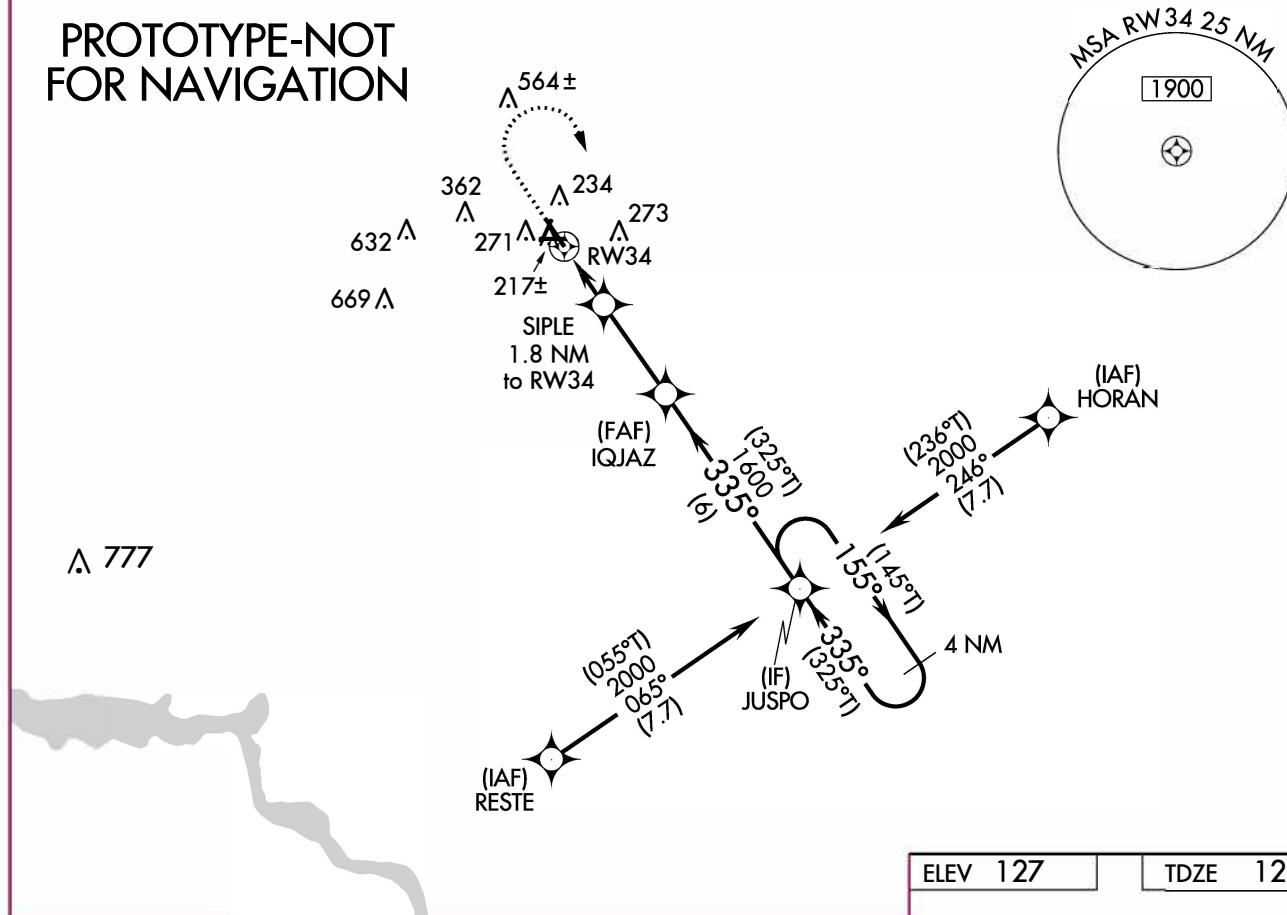
MISSED APPROACH: Climb to 600 then climbing right turn to 3000 direct JUSPO and hold, continue climb-in-hold to 3000.

AWOS-3
124.175

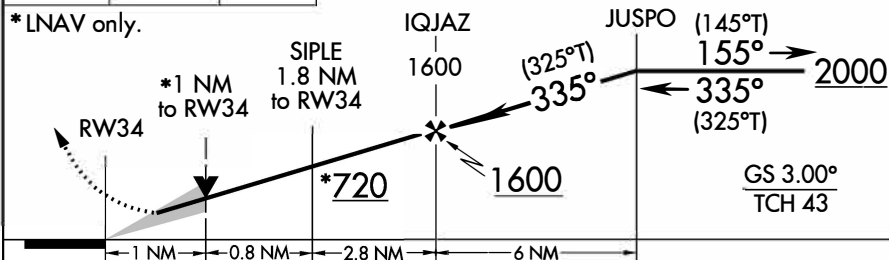
WASHINGTON CENTER
132.025 269.4

UNICOM
123.0 (CTAF) 0

**PROTOTYPE-NOT
FOR NAVIGATION**

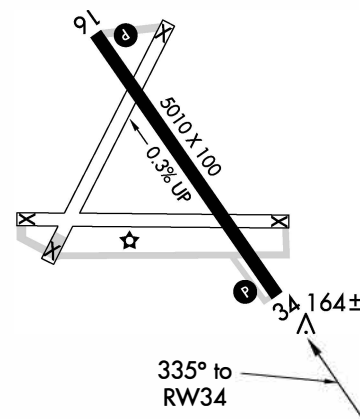


* LNAV only.



CATEGORY	A	B	C	D
LPV DA	372-1 250 (300-1)		NA	
LNAV/VNAV DA	372-1 250 (300-1)		NA	
LNAV MDA	480-1 358 (400-1)		NA	
CIRCLING	580-1 453 (500-1)		680-1½ 553 (600-1½)	NA

ELEV 127 TDZE 122



REIL Rwy 16 and 34 **0**
MIRL Rwy 16-34 **0**

OLD

EMPORIA, VIRGINIA

AL-5534 (FAA)

14093

WAAS CH 63226 W34A	APP CRS 335°	Rwy Idg TDZE Apt Elev	5010 122 126
--	------------------------	-----------------------------	---

RNAV (GPS) RWY 34

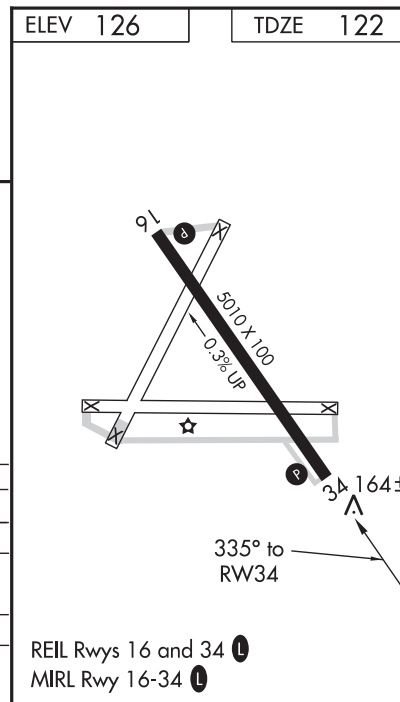
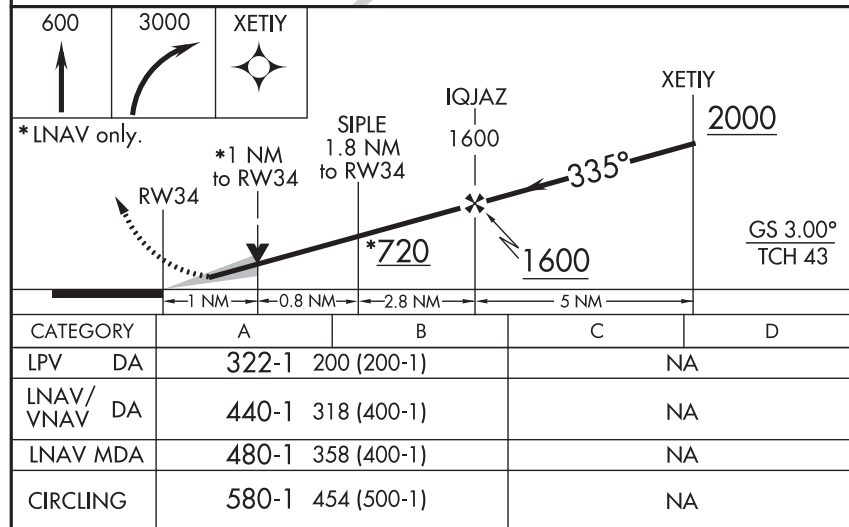
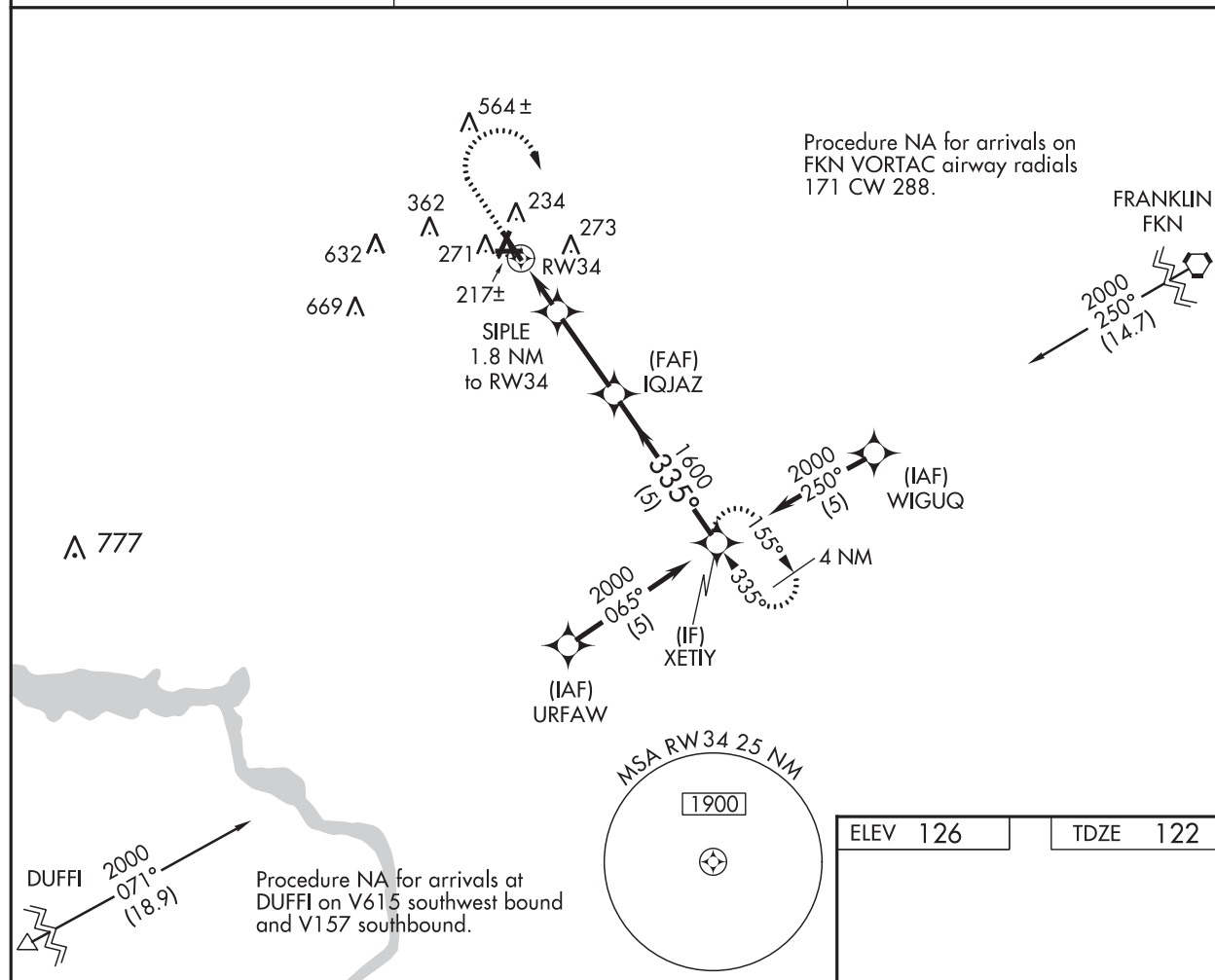
EMPORIA-GREENSVILLE RGNL (EMV)



For uncompensated Baro-VNAV systems, LNAV/VNAV NA below -1.5°C (5°F) or above 54°C (130°F). DME/DME RNP-0.3 NA. VDP and Baro-VNAV NA when using Ahoskie altimeter setting. When local altimeter setting not received, use Ahoskie altimeter setting and increase all DA 73 feet and all MDA 80 feet; increase LNAV/VNAV visibility all Cats 1/8 mile.

MISSED APPROACH:
Climb to 600 then climbing right turn to 3000 direct XETIY and hold, continue climb-in-hold to 3000.

AWOS-3 124.175	WASHINGTON CENTER 132.025 269.4	UNICOM 123.0 (CTAF) 0
--------------------------	---	---------------------------------



NE-3, 05 JAN 2017 to 02 FEB 2017

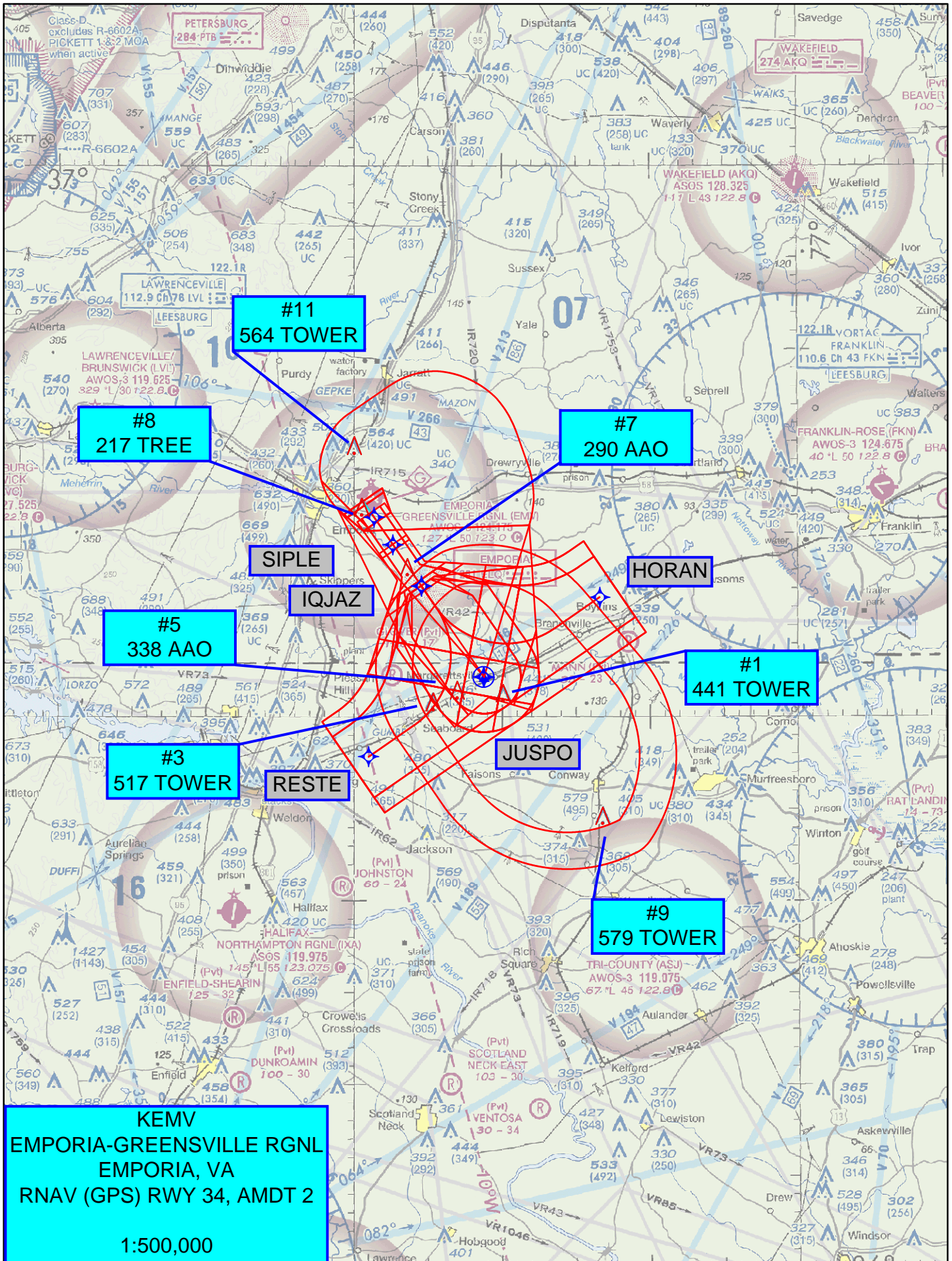
NE-3, 05 JAN 2017 to 02 FEB 2017

EMPORIA, VIRGINIA
Amdt 1A 03APR14

36°41'N - 77°29'W

EMPORIA-GREENSVILLE RGNL (EMV)
RNAV (GPS) RWY 34

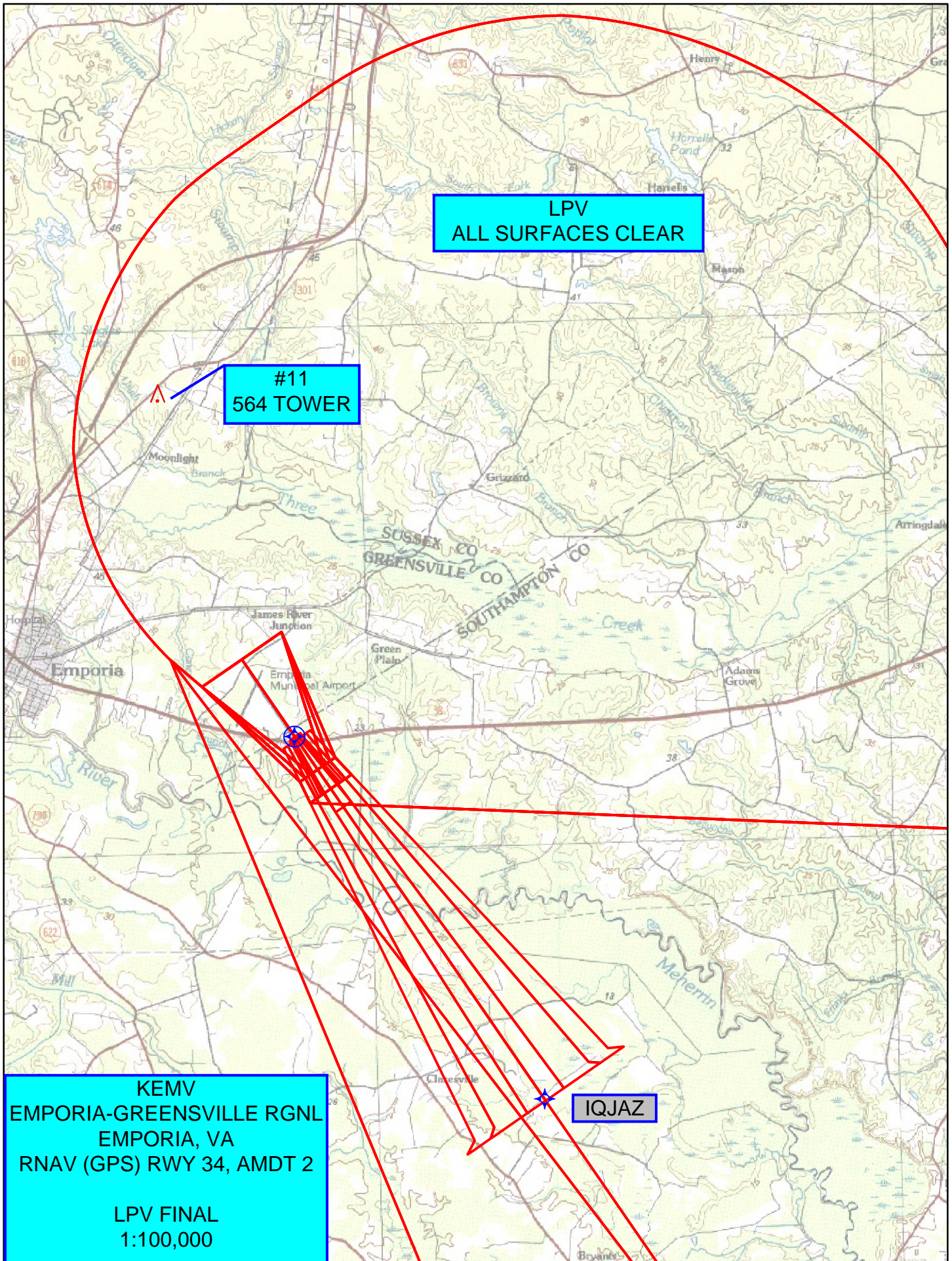
RNAV (GPS) RWY 34 FLIGHT INSPECTION MAP



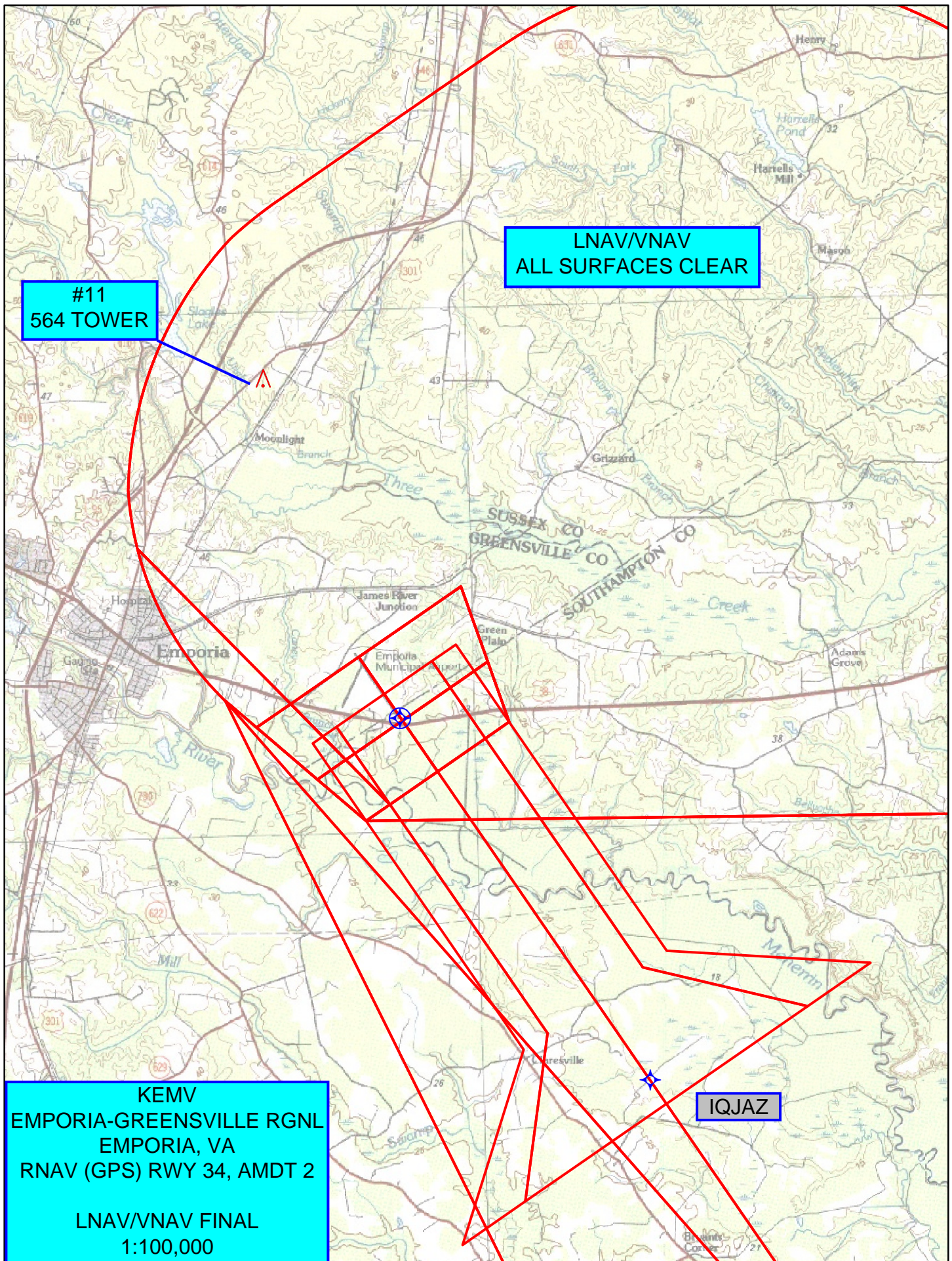
KEMV
EMPORIA-GREENSVILLE RGNL
EMPORIA, VA
RNAV (GPS) RWY 34, AMDT 2
CLIMB-IN-HOLD
1:500,000

CLIMB-IN-HOLD
1:500,000

RNAV (GPS) RWY 34 FLIGHT INSPECTION MAP



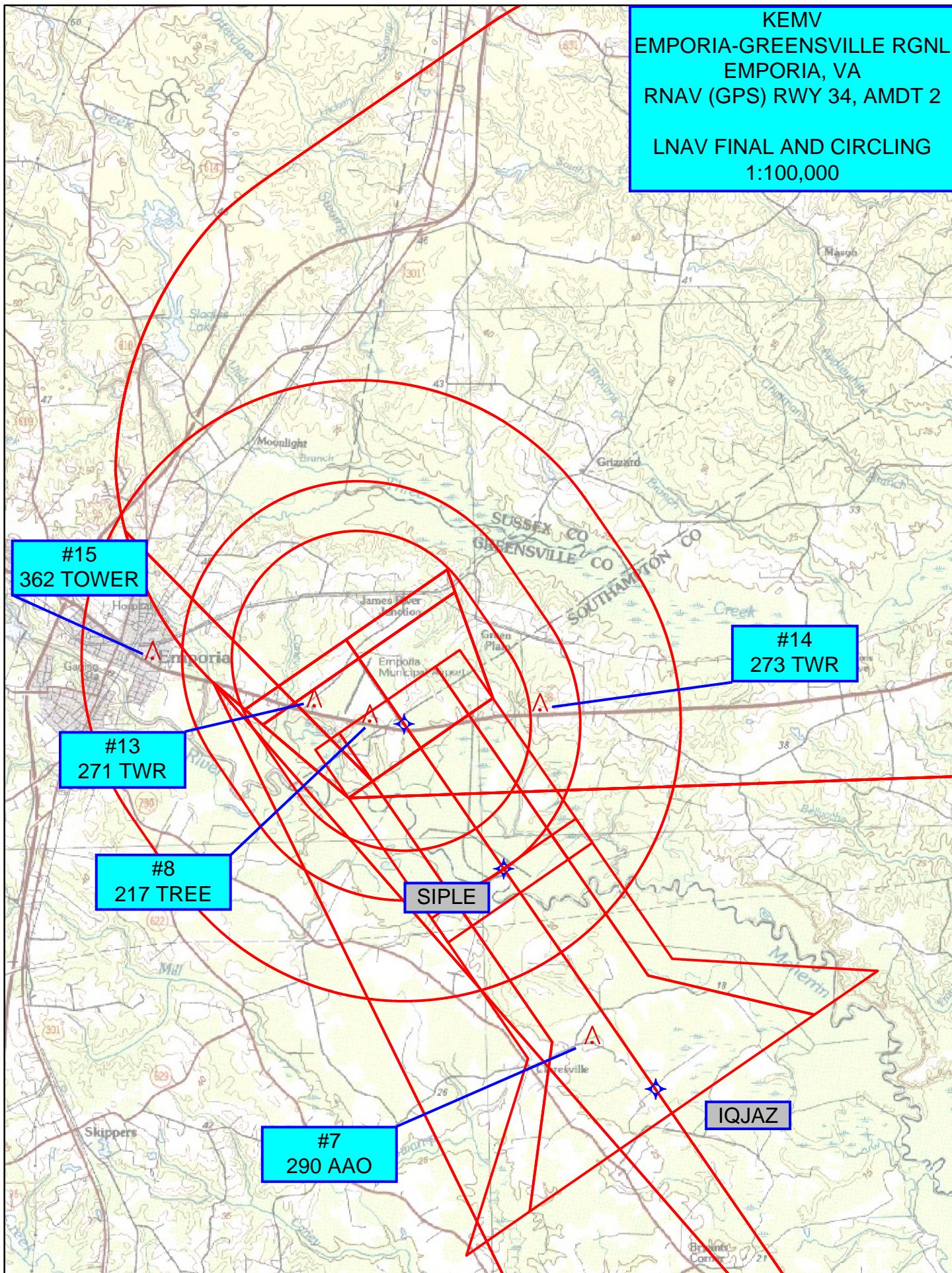
RNAV (GPS) RWY 34 FLIGHT INSPECTION MAP



RNAV (GPS) RWY 34 FLIGHT INSPECTION MAP

KEMV
EMPORIA-GREENSVILLE RGNL
EMPORIA, VA
RNAV (GPS) RWY 34, AMDT 2

LNAV FINAL AND CIRCLING
1:100,000



TERMINAL AIRSPACE DATA REQUIREMENTS

CITY: **EMPORIA**

STATE: **VA**

AIRPORT NAME: **EMPORIA-GREENSVILLE REGIONAL**

ID: **KEMV**

PROCEDURE: **RNAV (GPS) RWY 34**

AMDT: **2**

DOCKET#: **NOT REQUIRED**

(96-AXX-X/Required/Not Required)

ALL DIST TO 1/100 NM; ELEV TO NEAREST FT; COORD TO 1/100 SEC; DEG TO 1/100 DG.

- | | | | |
|---|---------------------------------|--------------------------------|---------------|
| 1. Distance from | <u>THLD</u> | to 1000' point | <u>2.98</u> |
| <small>(Enter THLD, FAF, ARP, FACILITY, as appropriate)</small> | | | |
| 2. Width of | <u>FINAL</u> | segment at 1000' point | <u>1.20</u> |
| <small>(Enter appropriate segment, final, intermediate, etc.)</small> | | | |
| 3. True Course of | <u>FINAL</u> | segment containing 1000' point | <u>325.43</u> |
| 4. High Terrain in | <u>FINAL</u> | segment containing 1000' point | <u>100</u> |
| 5. Distance from | <u>THLD</u> | to 1500' point | <u>4.55</u> |
| <small>(If 1500' point in PT maneuvering area or holding pattern note in remarks)</small> | | | |
| 6. Width of | <u>FINAL</u> | segment at 1500' point | <u>2.13</u> |
| 7. True Course of | <u>FINAL</u> | segment containing 1500' point | <u>325.43</u> |
| 8. High Terrain in | <u>FINAL</u> | segment containing 1500' point | <u>100</u> |
| 9. Threshold Coordinates (if straight-in) ... | <u>364052.31N / 0772840.43W</u> | | |
| 10. ARP Coordinates | <u>364112.70N / 0772857.90W</u> | | |
| 11. Runway Approach End and distance furthest from ARP | RWY | <u>34</u> | |
| | Distance | <u>0.41</u> | NM |
| 12. FAF Coordinates | <u>363707.46N / 0772528.05W</u> | | |

REMARKS: Approach/Drawing attached.