

Flight Procedure Tracking Form		Action: FLIGHT CHECK	Task Type: IAP	Date Open: 02/20/2015	Task #: 201411143086431G002	Request #: 20141114308643
Procedure: ILS OR LOC RWY 7 AMDT 34			Airport ID: KPHF	Airport: NEWPORT NEWS/WILLIAMSBURG INTL		Reimbursable #: NO
City: NEWPORT NEWS	ST: VA	GPS #:	Estimated Chart Date: 03/02/2017		FICO #:	
Fac ID: PHF		Fac. Type: ILS			Specialist: GEORGETTE BARNETT	
Procedure Review						
	Rec'd	Rel'd	Full Name	Comments		
Lead:	09/02/2016			QUALITY		
QA:				22 2.7.2017 BD		
Liaison:				CHECKED		
Procedure Comments: ENROUTE-NON Remark Type: INFORMATION PENDING DATA USED FOR KPHF FOR AVP RUNWAYS (NO NEW DATA IN RECORD, RECORD CREATED TO ENABLE AUTOMATION). PENDING DATE USED FOR I-PHF CONTACT JULIE MORGAN, AJV-5412 SUPERVISOR 405 954-8568						

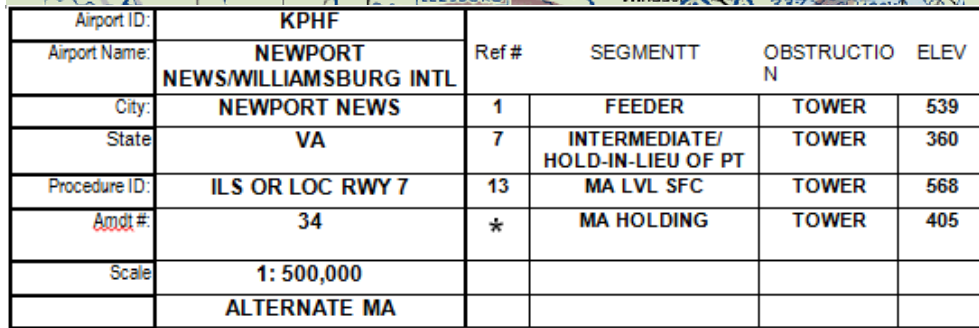


NM 1 2 3 4 5 6 7 8 9 10
FT 8000 16000 24000 32000 40000 48000 56000 64000

fpogpb | phf_il7p (PROD) | 31 Oct 2016 14:28:57 | 1" = 8333.3 feet (MAP)









Airport ID:	KPHF
Airport Name:	NEWPORT NEWS/WILLIAMSBURG INTL
City:	NEWPORT NEWS
State:	VA
Procedure ID:	ILS OR LOC RWY 7
Amtd #:	34
Scale:	1: 500,000
	ALTERNATE MA

Ref #	SEGMENT	OBSTRUCTION	ELEV
3	FEEDER	TOWER	1096
5	INITIAL	AAO	309
7	INTERMEDIATE/HOLD-IN-LIEU OF PT	TOWER	360
10	MA PENETRATION	TREE	123
13	MA LVL SFC	TOWER	568
*	MA HOLDING	TOWER	405

NM 1 2 3 4 5 6 7 8 9 10
 FT 8000 16000 24000 32000 40000 48000 56000 64000

fpogpb | phf il7p (PROD) | 2 Feb 2017 13:55:54 | 1" = 8333.3 feet (MAP)



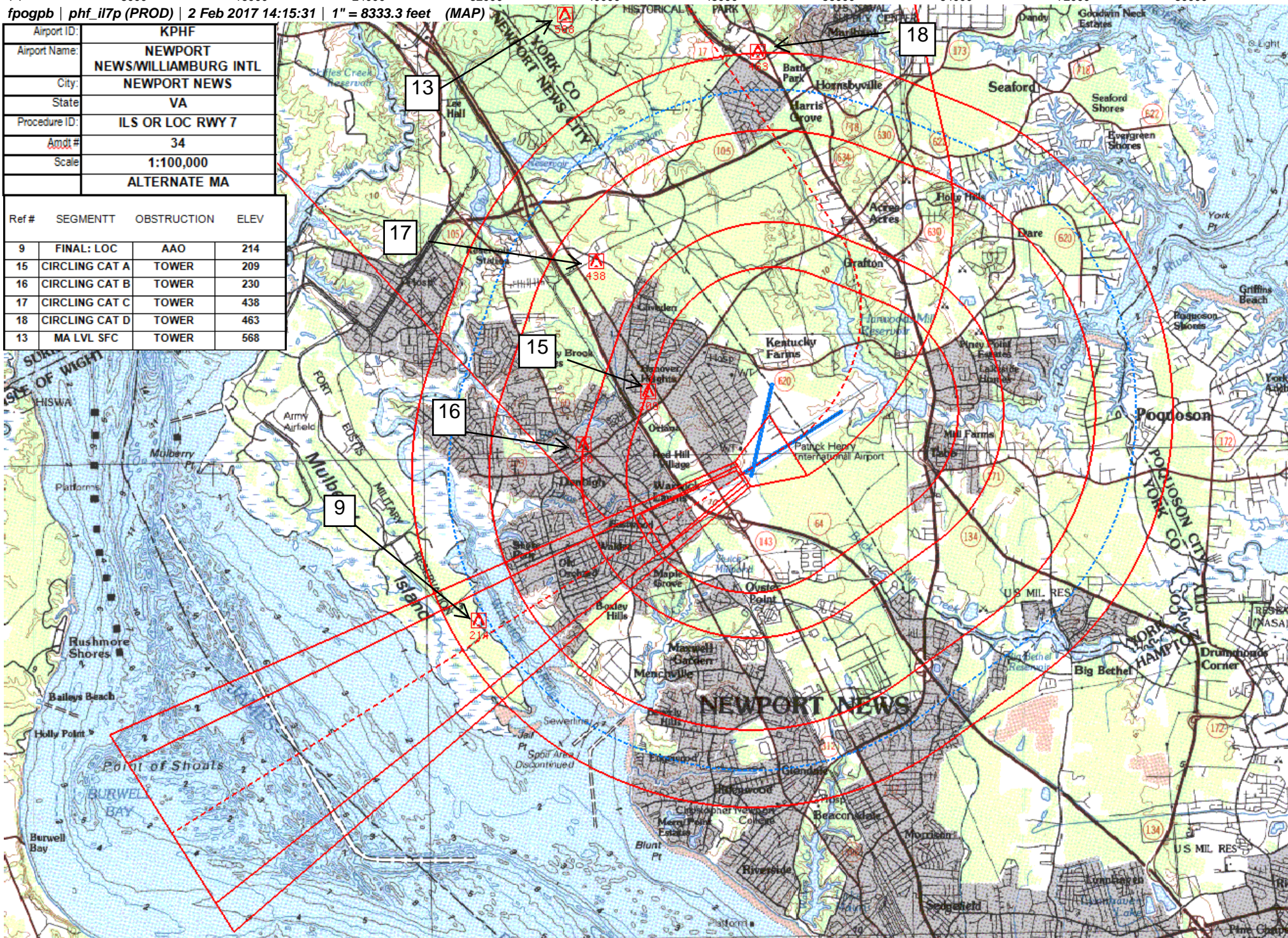
Airport ID:	KPHF	Ref #	SEGMENTT	OBSTRUCTION	ELEV
Airport Name:	NEWPORT NEWS/WILLIAMSBURG INTL				
City:	NEWPORT NEWS		FINAL: ILS	ASC	
State:	VA	10	MA PENETRATION	TREE	123
Procedure ID:	ILS OR LOC RWY 7	13	MA LVL SFC	TOWER	568
Amdt #	34				
Scale:	1:100,000				
	ALTERNATE MA				

NM 1 2 3 4 5 6 7 8 9 10 11 12 13 14
FT 8000 16000 24000 32000 40000 48000 56000 64000 72000 80000

fpogpb | phf_il7p (PROD) | 2 Feb 2017 14:15:31 | 1" = 8333.3 feet (MAP)

Airport ID:	KPHF
Airport Name:	NEWPORT NEWS/WILLIAMSBURG INTL
City:	NEWPORT NEWS
State:	VA
Procedure ID:	ILS OR LOC RWY 7
Amdt #:	34
Scale:	1:100,000
	ALTERNATE MA

Ref #	SEGMENTT	OBSTRUCTION	ELEV
9	FINAL: LOC	AAO	214
15	CIRCLING CAT A	TOWER	209
16	CIRCLING CAT B	TOWER	230
17	CIRCLING CAT C	TOWER	438
18	CIRCLING CAT D	TOWER	463
13	MA LVL SFC	TOWER	568



LOC/DME I-PHF 110.1 Chan 38	APP CRS 067°	Rwy Idg 8003 TDZE 40 Apt Elev 42
---	------------------------	---

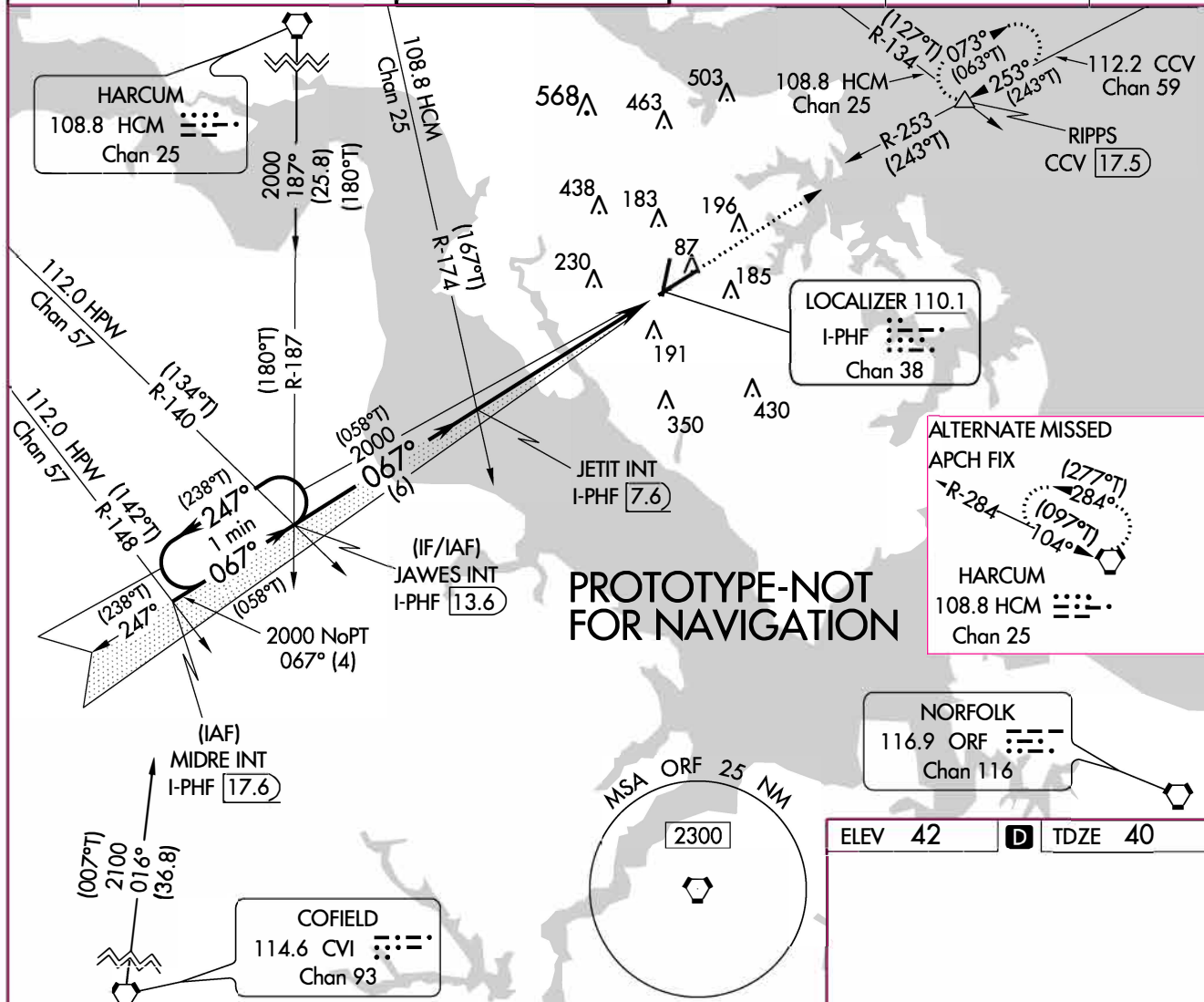
NEW

ILS or LOC RWY 7

NEWPORT NEWS/WILLIAMSBURG INTL (PHF)

 	MALSR 	MISSED APPROACH: Climb to 2500 on heading 067° and on CCV VORTAC R-253 to RIPPS INT/ CCV 17.5 DME and hold.
------	------------------	--

ATIS 128.65	NORFOLK APP CON 125.7	NEWPORT NEWS TOWER★ 118.7 (CTAF) 257.9	GND CON 121.9 348.6	CLNC DEL 121.65 225.4	UNICOM 122.95
-----------------------	---------------------------------	--	-------------------------------	---------------------------------	-------------------------



One Minute Holding Pattern	JAWES INT I-PHF 13.6	JETIT INT I-PHF 7.6	2500 hdg 067°	CCV R-253	RIPPS △
2000	2000	2000			
GS 3.00° TCH 59					
	6 NM	4.8 NM	1.2 NM		
CATEGORY	A	B	C	D	
S-ILS 7	280/24 240 (300-½)				
S-LOC 7	480/24	440 (500-½)	480/40	440 (500-¾)	
CIRCLING	520-1 478 (500-1)	540-1 498 (500-1)	740-2 698 (700-2)	780-2¼ 738 (800-2¼)	
REIL Rwy 20 and 25 HIRL Rwy 2-20 and 7-25 FAF to MAP 6 NM					
Knots	60	90	120	150	180
Min:Sec	6:00	4:00	3:00	2:24	2:00

ILS or LOC RWY 7

NEWPORT NEWS/WILLIAMSBURG INTL (PHF)

ILS or LOC RWY 7

NE-3. 10 NOV 2016 to 08 DEC 2016

TERMINAL AIRSPACE DATA REQUIREMENTS

CITY: **NEWPORT NEWS**

STATE: **VA**

AIRPORT NAME: **NEWPORT NEWS/WILLIAMSBURG INTL**

ID: **KPHF**

PROCEDURE: **ILS OR LOC RWY 7**

AMDT: **34**

DOCKET#: **NOT REQUIRED**

(96-AXX-X/Required/Not Required)

ALL DIST TO 1/100 NM; ELEV TO NEAREST FT; COORD TO 1/100 SEC; DEG TO 1/100 DG.

- | | | | |
|--|---------------------------------|--------------------------------|---------------|
| 1. Distance from | <u>THLD</u> | to 1000' point | <u>2.83</u> |
| (Enter THLD, FAF, ARP, FACILITY, as appropriate) | | | |
| 2. Width of | <u>FINAL</u> | segment at 1000' point | <u>0.83</u> |
| (Enter appropriate segment, final, intermediate, etc.) | | | |
| 3. True Course of | <u>FINAL</u> | segment containing 1000' point | <u>057.80</u> |
| 4. High Terrain in | <u>FINAL</u> | segment containing 1000' point | <u>43</u> |
| 5. Distance from | <u>THLD</u> | to 1500' point | <u>4.98</u> |
| (If 1500' point in PT maneuvering area or holding pattern note in remarks) | | | |
| 6. Width of | <u>FINAL</u> | segment at 1500' point | <u>1.29</u> |
| 7. True Course of | <u>FINAL</u> | segment containing 1500' point | <u>057.80</u> |
| 8. High Terrain in | <u>FINAL</u> | segment containing 1500' point | <u>43</u> |
| 9. Threshold Coordinates (if straight-in) ... | <u>370730.01N / 0763004.97W</u> | | |
| 10. ARP Coordinates | <u>370754.80N / 0762934.70W</u> | | |
| 11. Runway Approach End and distance furthest from ARP | RWY | <u>25</u> | |
| | Distance | <u>0.77</u> | NM |
| 12. FAF Coordinates | <u>370418.42N / 0763624.32W</u> | | |

REMARKS: Approach/Drawing attached.