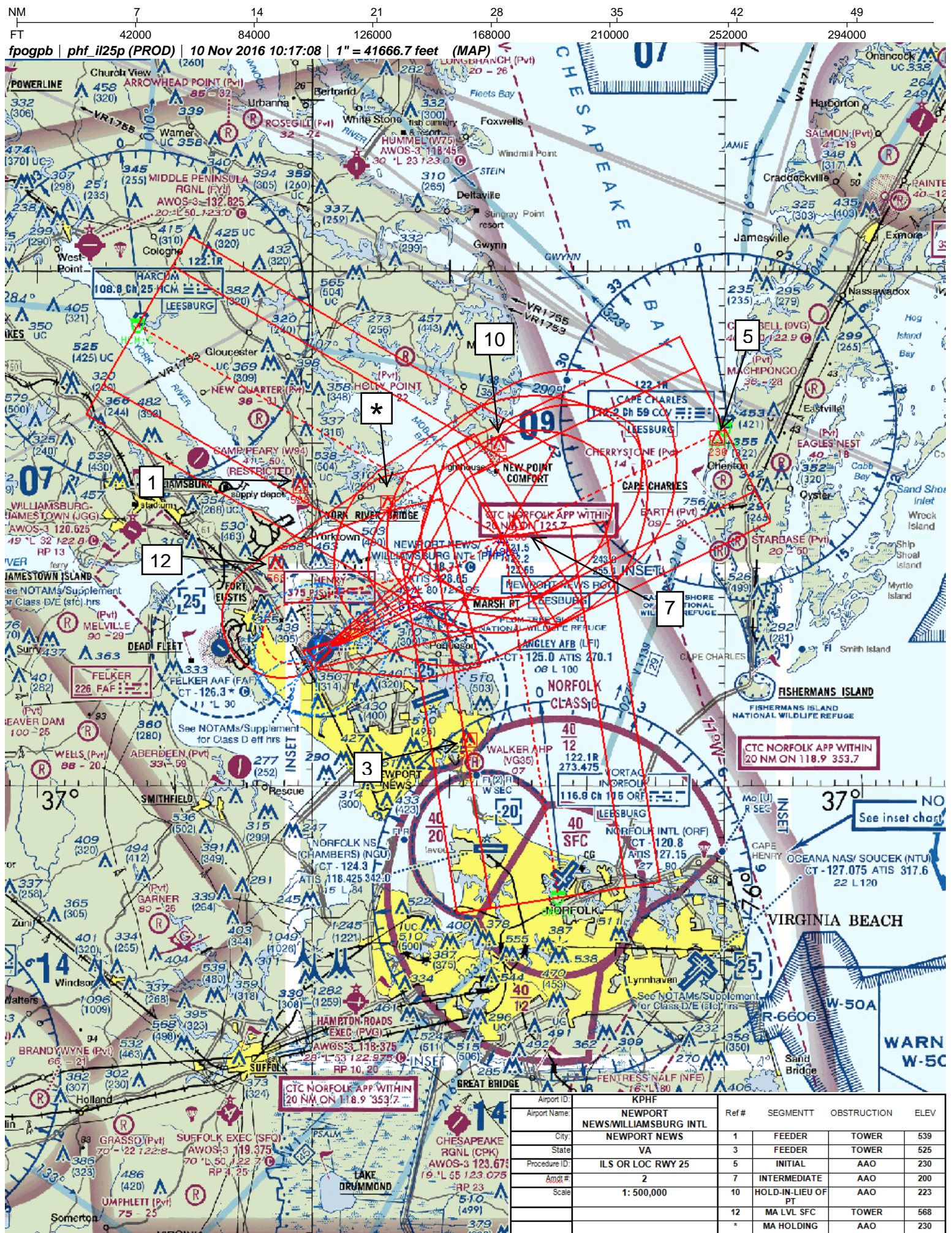


Flight Procedure Tracking Form		Action: FLIGHT CHECK	Task Type: IAP	Date Open: 09/02/2016	Task #: 201411143086431G001	Request #: 20141114308643
Procedure: ILS OR LOC RWY 25 AMDT 2			Airport ID: KPHF	Airport: NEWPORT NEWS/WILLIAMSBURG INTL		Reimbursable #: NO
City: NEWPORT NEWS	ST: VA	GPS #:	Estimated Chart Date: 06/22/2017		FICO #: 1181423	
Fac ID: DHY		Fac. Type: ILS			Specialist: GEORGETTE BARNETT	
Procedure Review						
	Rec'd	Rel'd	Full Name	Comments		
Lead:	09/02/2016	02/28/2017	ROBERT HAMILTON	<div style="position: relative; height: 100px;"> <div style="position: absolute; top: 0; right: 0; color: green; font-weight: bold;">QUALITY</div> <div style="position: absolute; bottom: 0; right: 0; color: green; font-weight: bold;">CHECKED</div> </div>		
QA:	02/28/2017	02/28/2017	ROBERT HAMILTON			
Liaison:	02/28/2017	02/28/2017	MARY MCDONALD			
Procedure Comments: ENROUTE-NON Remark Type: INFORMATION PENDING DATA USED FOR KPHF FOR AVP RUNWAYS (NO NEW DATA IN RECORD, RECORD CREATED TO ENABLE AUTOMATION). ACTIVE DATA USED FOR I-DHY 8260-3 03/28/17: THIS IS AN UPDATED COPY OF THE FORM DEVELOPED ON 12/15/16. (GPB) CHANGED PRIMARY MISSED APPROACH INSTRUCTIONS FROM "CLIMB TO 500 THEN CLIMBING RIGHT TURN TO 2500 ON HEADING 087 AND ON CCV VORTAC R-253 TO RIPPS INT/CCV 17.5 DME AND HOLD" TO "CLIMB TO 500 THEN CLIMBING RIGHT TURN TO 2500 ON HEADING 080 AND ON CCV VORTAC R-254 TO HASBA INT/I-DHY 11.61 DME AND HOLD." ADDITIONAL FLT DATA: CHANGED "HOLD E, RT, 253.04 INBOUND" TO "HOLD NE, RT, 246.81 INBOUND." 8260-2 HASBA 8260-2 03/28/17: THIS IS AN UPDATED COPY OF THE FORM DEVELOPED ON 12/15/2016. (GPB) FIX MAKE-UP FACILITIES: ADDED FAC 4 CCV VORTAC INFORMATION - NAME: CAPE CHARLES IDEN: CCV TYPE: VORTAC CLASS: L MAG BRG: 254.10 TRUE BRG: 244.10 DIST FROM FAC NM: 14.40 MRA:2000 MAA:4500. FIX USE: ILS OR LOC RWY 25 - ADDED FAC 4 RIPPS 03/28/17: THIS IS AN UPDATED COPY OF THE FORM DEVELOPED ON 12/15/2016. (GPB) FIX USE: DELETED IAP ILS OR LOC RWY 25. CONTACT JULIE MORGAN, AJV-5412 SUPERVISOR 405 954-8568						

QUALITY
15
CHECKED

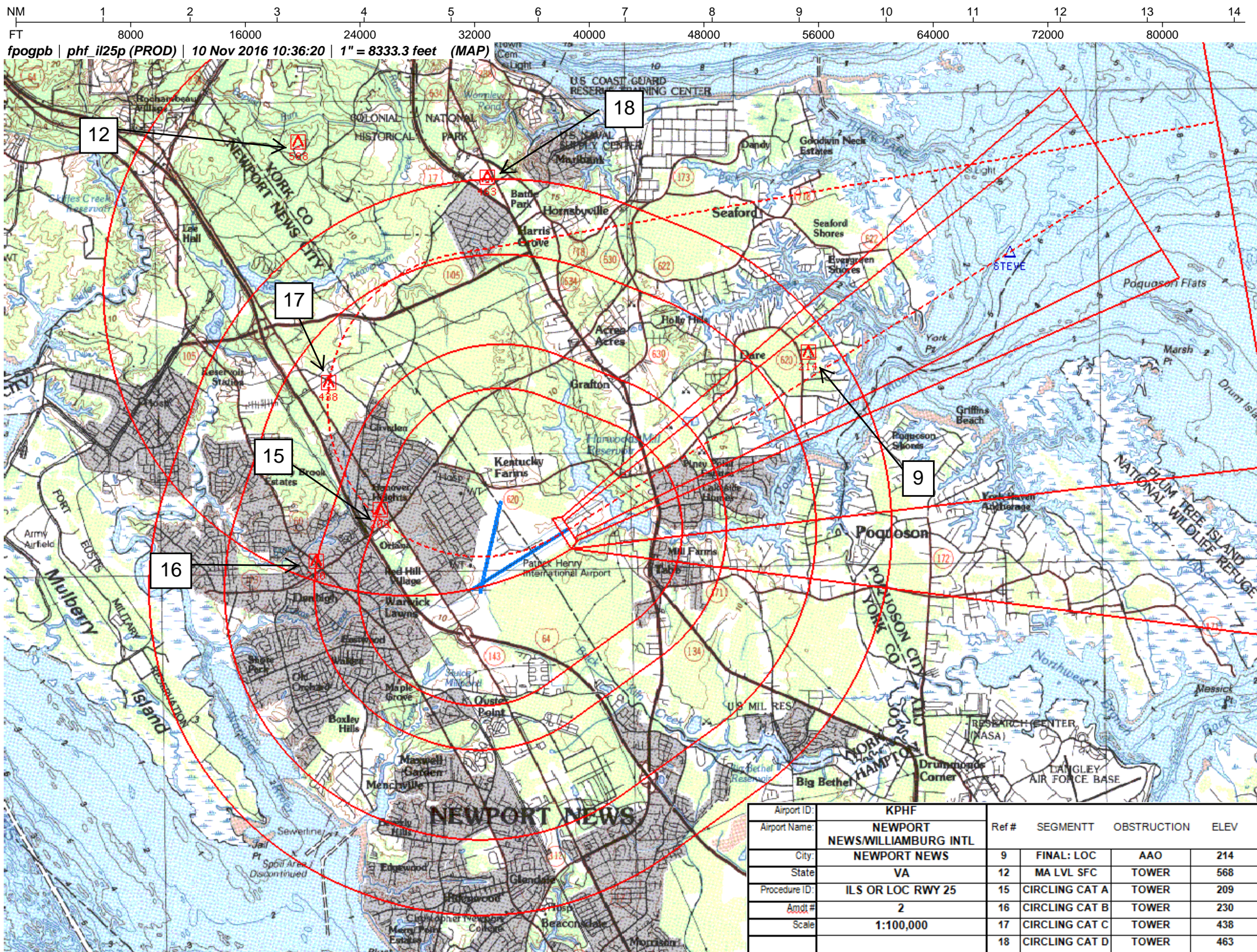


NM 1 2 3 4 5 6 7 8 9 10
FT 8000 16000 24000 32000 40000 48000 56000 64000

fpogpb | phf il25p (PROD) | 10 Nov 2016 10:33:00 | 1" = 8333.3 feet (MAP)

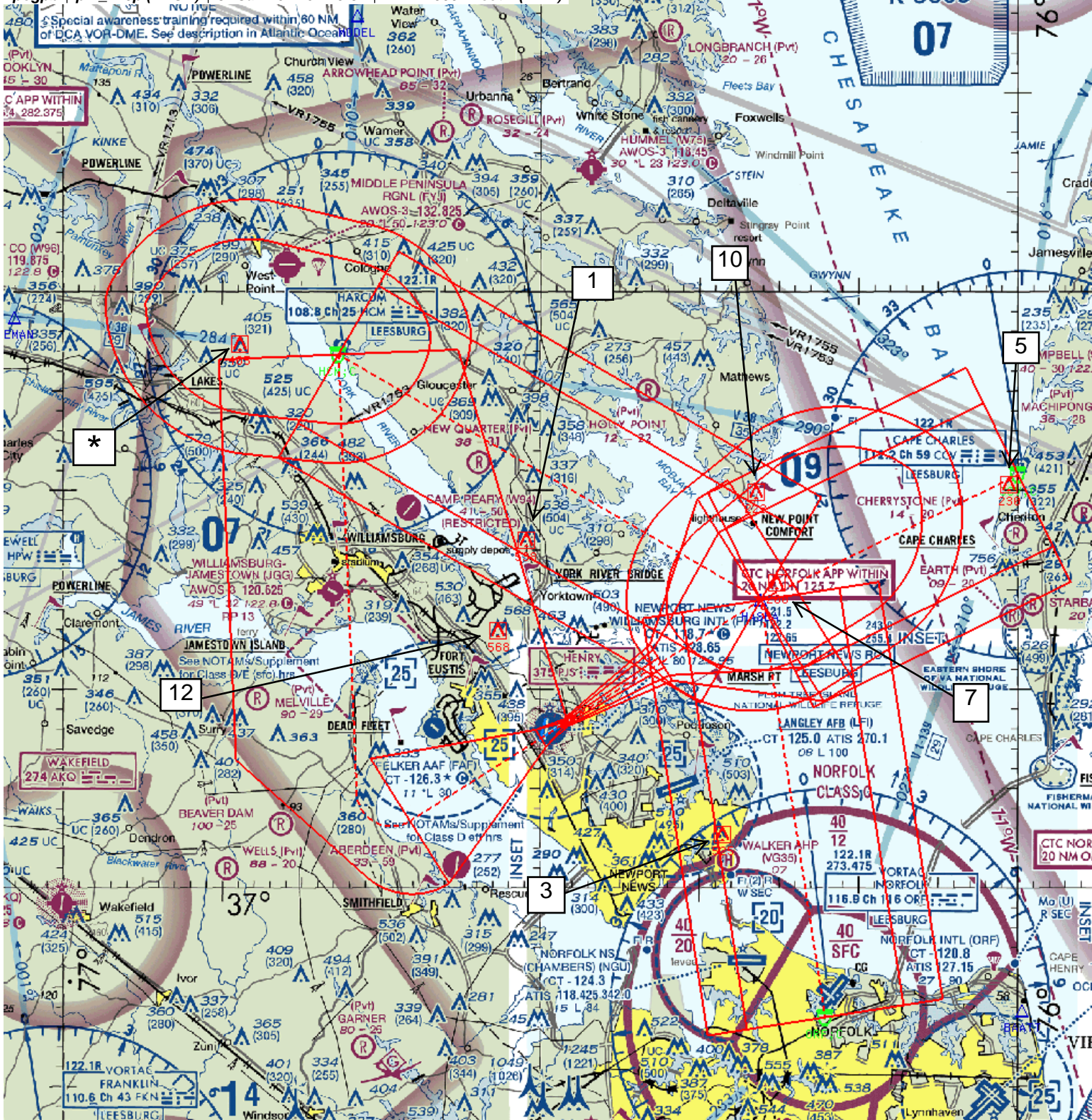


Airport ID:	KPHF	Ref #	SEGMENTT	OBSTRUCTION	ELEV
Airport Name:	NEWPORT NEWS/WILLIAMSBURG INTL				
City:	NEWPORT NEWS		FINAL: ILS	ASC	
State:	VA	12	MA LVL SFC	TOWER	568
Procedure ID:	ILS OR LOC RWY 25				
Amdt #	2				
Scale	1:100,000				



Genomic map of the NM-FT region on chromosome 1. The map shows a scale from 0 to 294,000 bp. Key features include the NM gene (red box) and the FT gene (green box). The NM gene is located between 42,000 and 126,000 bp, and the FT gene is located between 126,000 and 294,000 bp. The map also shows the positions of the 7, 14, 21, 28, 35, 42, and 49 kb markers.

fpogpb | phf_il25p (PROD) | 31 Jan 2017 07:25:32 | 1" = 41666.7 feet (MAP)



Airport ID:	KPHF	Ref #	SEGMENT	OBSTRUCTION	ELEV
Airport Name:	NEWPORT NEWS/WILLIAMSBURG INTL				
City:	NEWPORT NEWS	1	FEEDER	TOWER	539
State:	VA	3	FEEDER	TOWER	525
Procedure ID:	ILS OR LOC RWY 25	5	INITIAL	AAO	230
Amtd #	2	7	INTERMEDIATE	AAO	200
Scale	1: 500,000	10	HLD IN LIEU OF PT	AAO	223
		12	MA LVL SFC	TOWER	568
	ALTERNATE MA	*	MA HOLDING	TOWER	405

CAUTION
HIGH DENSITY MILITARY OPERATIONS VICINITY OCEANA NAS AND FORTRESS BLISS

NM 1 2 3 4 5 6 7 8 9 10
FT 8000 16000 24000 32000 40000 48000 56000 64000

fpogpb | phf_il25p (PROD) | 31 Jan 2017 07:54:28 | 1" = 8333.3 feet (MAP)



Airport ID:	KPHF	Ref #	SEGMENT	OBSTRUCTION	ELEV
Airport Name:	NEWPORT NEWS/WILLIAMSBURG INTL				
City:	NEWPORT NEWS		FINAL: ILS	ASC	
State	VA	12	MA LVL SFC	TOWER	568
Procedure ID:	ILS OR LOC RWY 25				
Amdt #	2				
Scale	1:100,000				
	ALTERNATE MA				



LOC/DME I-DHY	APP CRS	Rwy Idg	8003
110.1	247°	TDZE	41
Chan 38		Apt Elev	42

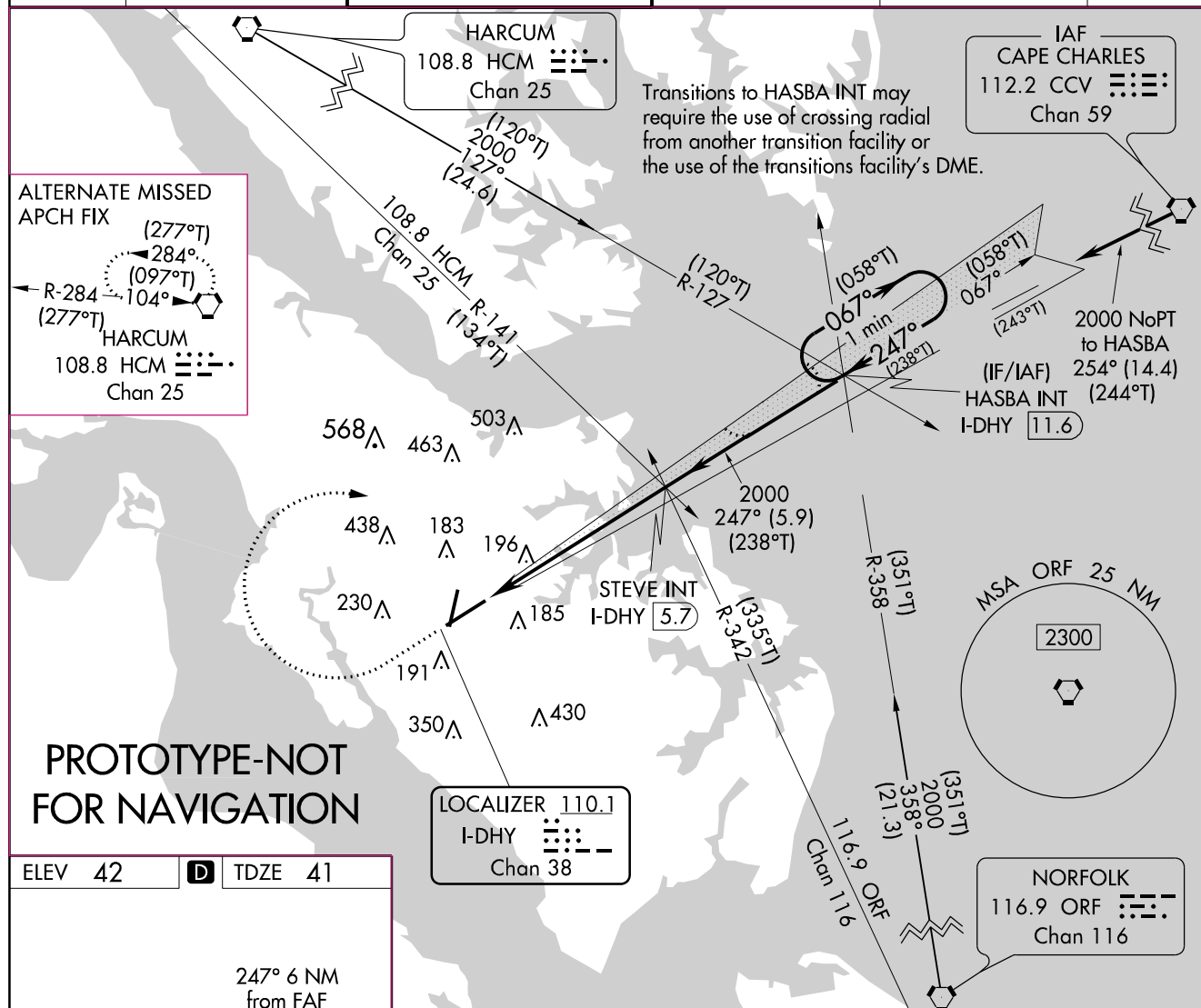
NEW**ILS or LOC RWY 25**

NEWPORT NEWS/WILLIAMSBURG INTL (PHF)

⚠ Circling Rwy 20 NA at night.
⚠

MISSED APPROACH: Climb to 500 then climbing right turn to 2500 on heading 080° and on CCV VORTAC R-254 to HASBA INT/I-DHY 11.61 DME and hold.

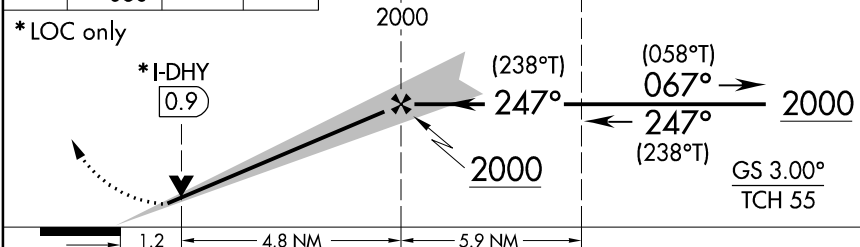
ATIS 128.65	NORFOLK APP CON 125.7	NEWPORT NEWS TOWER★ 118.7 (CTAF) 257.9	GND CON 121.9 348.6	CLNC DEL 121.65 225.4	UNICOM 122.95
-----------------------	---------------------------------	--	-------------------------------	---------------------------------	-------------------------



ELEV 42 TDZE 41

247° 6 NM from FAF

500	2500	CCV R-253	RIPPS INT	STEVE INT I-DHY 5.7	HASBA INT I-DHY 11.6	One Minute Holding Pattern
-----	------	-----------	-----------	---------------------	----------------------	----------------------------



REIL Rwy 20 and 25
HIRL Rwy 2-20 and 7-25

FAF to MAP 6 NM

Knots	60	90	120	150	180
Min:Sec	6:00	4:00	3:00	2:24	2:00

CATEGORY	A	B	C	D
S-ILS 25	241- ³ / ₄ 200 (200- ³ / ₄)			
S-LOC 25	480-1	439 (500-1)	480-1 ¹ / ₄	439 (500-1 ¹ / ₄)
CIRCLING	520-1 478 (500-1)	540-1 498 (500-1)	740-2 698 (700-2)	780-2 ¹ / ₄ 738 (800-2 ¹ / ₄)

NEWPORT NEWS, VIRGINIA

Amdt 2 FIG

NEWPORT NEWS/WILLIAMSBURG INTL (PHF)

37°08'N-76°30'W

ILS or LOC RWY 25

LOC/DME I-DHY	APP CRS	Rwy Idg	8003
110.1	247°	TDZE	41
Chan 38		Apt Elev	42

OLD

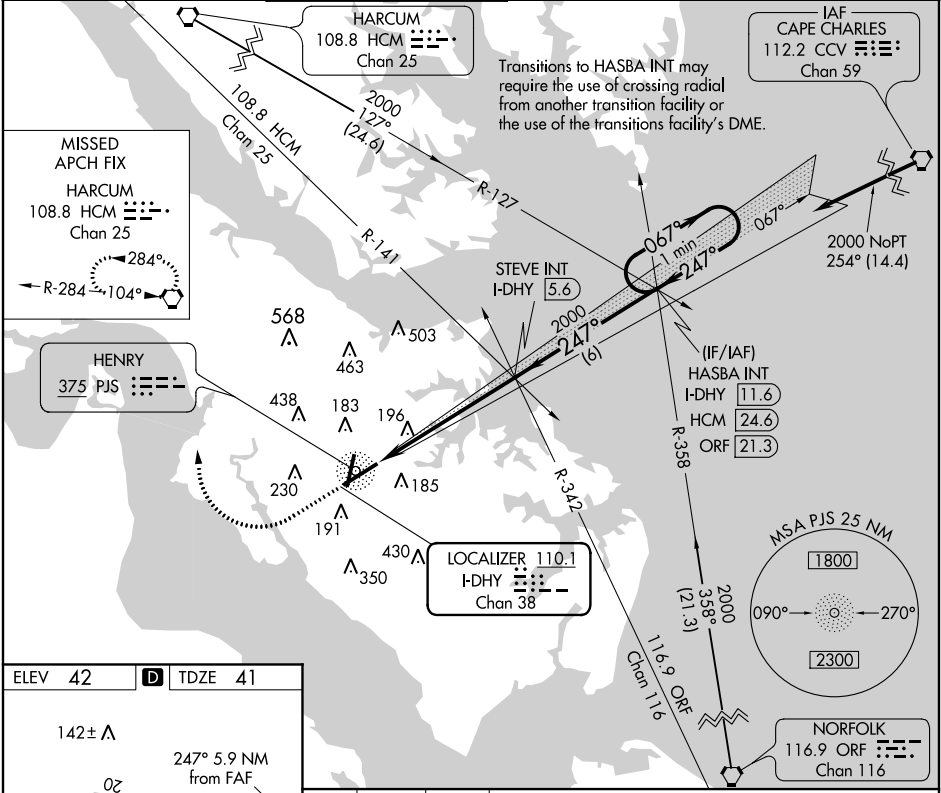
ILS or LOC RWY 25

NEWPORT NEWS/WILLIAMSBURG INTL (PHF)

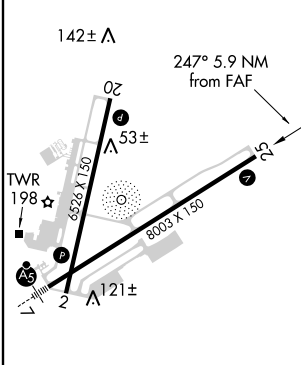
⚠ VDP NA with Norfolk Int'l altimeter setting. When local altimeter setting not received, use Norfolk Int'l altimeter setting: increase all DA 49 feet, increase all MDA 60 feet.
⚠ When VGSI inop Circling to Rwy 20 NA at night.

MISSED APPROACH: Climb to 2000 then right turn direct HCM VORTAC and hold.

ATIS	NORFOLK APP CON	NEWPORT NEWS TOWER ★	GND CON	CLNC DEL	UNICOM
128.65	125.7	118.7 (CTAF) 0 257.9	121.9 348.6	121.65 225.4	122.95



ELEV 42	TDZE 41
---------	---------



REIL Rwy 20 and 25	HIRL Rwy 20 and 25
FAF to MAP 5.9 NM	
Knots	60 90 120 150 180
Min:Sec	5:54 3:56 2:57 2:22 1:58

2000	HCM	STEVE INT I-DHY 5.6	HASBA INT I-DHY 11.6	One Minute Holding Pattern
*LOC only		2000		
*I-DHY 0.9		247°	067°	2000
		2000		GS 3.00° TCH 55
1.2	4.7 NM	6 NM		
CATEGORY	A	B	C	D
S-ILS 25	241-¾ 200 (200-¾)			
S-LOC 25	480-1	439 (500-1)	480-1¼ 439 (500-1¼)	480-1½ 439 (500-1½)
CIRCLING	520-1	478 (500-1)	520-1½ 478 (500-1½)	600-2 558 (600-2)

NE-3, 10 NOV 2016 to 08 DEC 2016

NE-3, 10 NOV 2016 to 08 DEC 2016

TERMINAL AIRSPACE DATA REQUIREMENTS

CITY: **NEWPORT NEWS**

STATE: **VA**

AIRPORT NAME: **NEWPORT NEWS/WILLIAMSBURG INTL**

ID: **KPHF**

PROCEDURE: **ILS OR LOC RWY 25**

AMDT: **2**

DOCKET#: **NOT REQUIRED**

(96-AXX-X/Required/Not Required)

ALL DIST TO 1/100 NM; ELEV TO NEAREST FT; COORD TO 1/100 SEC; DEG TO 1/100 DG.

- | | | | |
|---|---------------------------------|--------------------------------|---------------|
| 1. Distance from | <u>THLD</u> | to 1000' point | <u>3.16</u> |
| <small>(Enter THLD, FAF, ARP, FACILITY, as appropriate)</small> | | | |
| 2. Width of | <u>FINAL</u> | segment at 1000' point | <u>0.90</u> |
| <small>(Enter appropriate segment, final, intermediate, etc.)</small> | | | |
| 3. True Course of | <u>FINAL</u> | segment containing 1000' point | <u>237.81</u> |
| 4. High Terrain in | <u>FINAL</u> | segment containing 1000' point | <u>56</u> |
| 5. Distance from | <u>THLD</u> | to 1500' point | <u>5.18</u> |
| <small>(If 1500' point in PT maneuvering area or holding pattern note in remarks)</small> | | | |
| 6. Width of | <u>FINAL</u> | segment at 1500' point | <u>1.34</u> |
| 7. True Course of | <u>FINAL</u> | segment containing 1500' point | <u>237.81</u> |
| 8. High Terrain in | <u>FINAL</u> | segment containing 1500' point | <u>56</u> |
| 9. Threshold Coordinates (if straight-in) ... | <u>370812.17N / 0762841.34W</u> | | |
| 10. ARP Coordinates | <u>370754.80N / 0762934.70W</u> | | |
| 11. Runway Approach End and distance furthest from ARP | RWY | <u>25</u> | |
| | Distance | <u>0.77</u> | NM |
| 12. FAF Coordinates | <u>371123.51N / 0762221.08W</u> | | |

REMARKS: Approach/Drawing attached.