

Name: MARK SCHOENHOFF
Project Name: KGSO TRAKS2 STAR
Output File: KGSO TRAKS2 STAR
 TRAKS EARLL
 20170208_0838
Procedure Name: TRAKS2
Software: RNAV-Pro™
Version: 2.39g
Date/Time: 2/8/2017 8:42:53 AM
Input File: [KGSO TRAKS2 STAR
 TRAKS EARLL
 20170208_0816.txt](#)
Databases: AIRNAV Date: 1/24/2017
 CIFP Date: 8/18/2016
 DTED® (MAX) Date: 2002

Results Summary:

Flyability



DME/DME



No Critical DMEs Exist

Radars

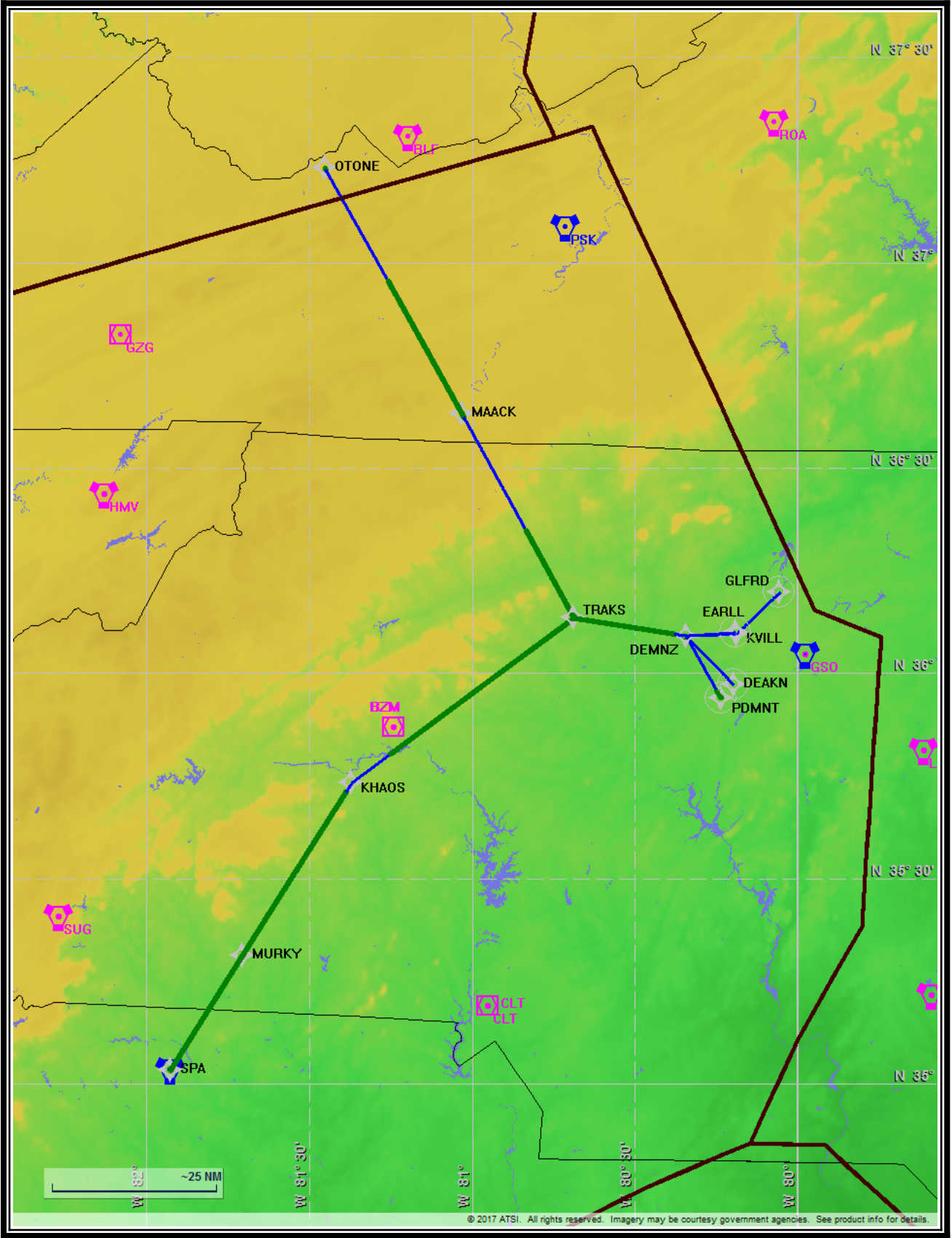


Comms



TERPS

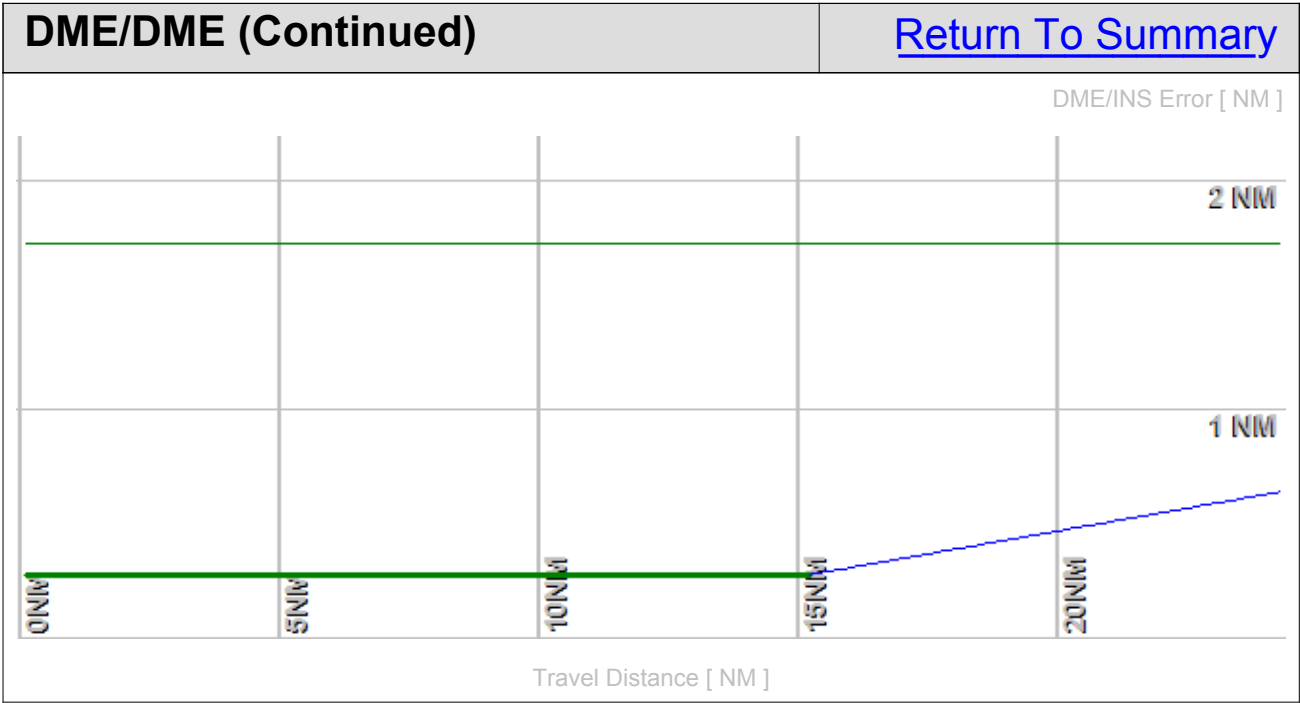




Flight Plan					Return To Summary		
Name	Type	Lat/Lon	Alt [ft]	VNAV Mode	IAS [Kts]	Turn Type	Leg Type
TRAKS	WP	N 36° 8' 5.89" W 80° 41' 15.52"	6900.0	Step	180.0	Fly By	TF
DEMNZ	WP	N 36° 5' 29.82" W 80° 20' 36.06"	5000.0	Step	180.0	Fly By	TF
EARLL	WP	N 36° 5' 57.84" W 80° 11' 30.55"	3300.0	Step	180.0	Fly Over	TF

Flyability		Return To Summary
Settings:	Flight Type: Arrival	
	Selected Airport: KGSO	
	Aircraft Category: Cat D	
	Climb Gradient: <i>None assigned</i>	
	Ground Speeds:	
	Table:	
	200.0 Kts up to 11000.0 ft	
	240.0 Kts up to 18000.0 ft	
	260.0 Kts up to 24000.0 ft	
	340.0 Kts up to 99900.0 ft	
	Wind Settings: <i>None assigned</i>	
	Descent During a Turn: Allowed	
	VNAV Mode: Flight Plan	
Entire track is fly-able		

DME/DME		Return To Summary
Settings:	RNP: 2.0	
	Flight Mode: Manual	
	Line of Sight (DTED Level 0 Max):	Evaluated
	DME Restrictions:	Evaluated
	Inertial Drift:	Enabled
	Initial Drift:	0.558 NM
	INS Drift Rate:	8.000 NM/Hour
	Range Mode:	OSV
	Co-Frequencies:	Evaluated
	RNP Edges:	Evaluated
	Min DME Range:	3.0 NM
	Allowed Gap Length:	4.0 NM
	DME Types:	VOR/DME, VORTAC, Standalone, and User
	DME Include Angles:	30 to 150
	Critical DMEs:	Allowed
	DoD Facilities:	Not included
	Foreign Facilities:	Not included
Low DMEs:	Included	
Terminal DMEs:	Included	
Flight Check DMEs:	Selected	
Higher Altitudes:	Evaluated	
Near Maximum Altitude:	Evaluated	
Total Number of DMEs Used: 3		
Maximum DME Error: 0.644 NM.		
No Critical DMEs were found.		
Available DMEs: LIB, CLT, BZM, GSO		

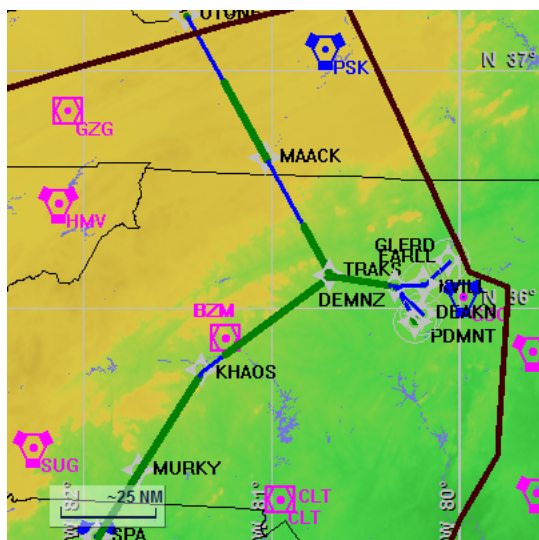


DME/DME (Continued)						Return To Summary			
DMEs Used									
#	Name	Lat/Lon/MAGVAR	Range	Source	Critical	Err. [NM]	Status	Time	Distance
1	CLT	N 35° 11' 25.04" W 80° 57' 6.31" 05 W	L + ESV	User	NO	1.052	Enabled	62.5%	62.5%
2	GSO	N 36° 2' 44.49" W 79° 58' 34.95" 03 W	H + ESV	User	NO	0.644	Enabled	5.9%	5.9%
3	LIB	N 35° 48' 41.84" W 79° 36' 45.33" 03 W	L + ESV	User	NO	1.040	Enabled	56.5%	56.5%
	Total Coverage							62.5%	62.5%
Flight Check DME Selection									
Distance [NM]		Selected DMEs						Alternate	
0.0		CLT	LIB	GSO	BZM				
16.6		CLT	LIB						
Inertial Drift Segments									
#	Start Location			End Location			Length [NM]		
1	N 36° 5' 45.80" W 80° 22' 41.46"			N 36° 5' 57.69" W 80° 11' 33.35"			9.1		
VOR: GSO				Available from N 36° 5' 45.80" W 80° 22' 41.46" to N 36° 5' 57.69" W 80° 11' 33.35"					
VOR: LIB				Available from N 36° 5' 35.97" W 80° 21' 24.26" to N 36° 5' 57.69" W 80° 11' 33.35"					

Available DMEs by Waypoints		Return To Summary
Waypoint Before	Waypoint After	DME List
TRAKS	DEMNZ	GSO, BZM, CLT, and LIB
DEMNZ	EARLL	CLT and LIB

User Data					Return To Summary		
User Data Files							
#	File Name						
1	KGSO TRAKS STAR.udt						
User DMEs							
#	Name	Lat/Lon/MAGVAR	Range	Elevation [ft]	Frequency	Replaces	Status
1	LIB	N 35° 48' 41.84" W 79° 36' 45.33" 03 W	L	827.6	113.00	LIB	Used
		ESV:	Bearing [True]: 251.0° to 300.0° Bearing [Mag]: 254.0° to 303.0°		Arc Distance: Out to 68.0 NM Altitude: 5000.0 to 18000.0 ft		
2	CLT	N 35° 11' 25.04" W 80° 57' 6.31" 05 W	L	731.7	115.00	CLT	Used
		Restriction:	Bearing [True]: 45.0° to 95.0° Bearing [Mag]: 50.0° to 100.0°		Distance: Beyond 25.0 NM Altitude: Below 2500.0 ft		
		Restriction:	Bearing [True]: 10.0° to 45.0° Bearing [Mag]: 15.0° to 50.0°		Distance: Beyond 25.0 NM Altitude: Below 3000.0 ft		
		Restriction:	Bearing [True]: 265.0° to 345.0° Bearing [Mag]: 270.0° to 350.0°		Distance: Beyond 20.0 NM Altitude: Below 5000.0 ft		
		ESV:	Bearing [True]: 252.0° to 266.0° Bearing [Mag]: 257.0° to 271.0°		Arc Distance: Out to 55.0 NM Altitude: 3500.0 to 18000.0 ft		
		ESV:	Bearing [True]: 337.0° to 33.0° Bearing [Mag]: 342.0° to 38.0°		Arc Distance: Out to 66.0 NM Altitude: 5000.0 to 20000.0 ft		
		ESV:	Bearing [True]: 350.0° to 9.0° Bearing [Mag]: 355.0° to 14.0°		Arc Distance: Out to 83.0 NM Altitude: 6900.0 to 20000.0 ft		
3	SUG	N 35° 24' 23.42" W 82° 16' 7.01" 02 W	L	3970.0	112.20	SUG	Not Used
		ESV:	Bearing [True]: 22.0° to 89.0° Bearing [Mag]: 24.0° to 91.0°		Arc Distance: Out to 55.0 NM Altitude: 4000.0 to 15000.0 ft		
4	BZM	N 35° 52' 7.87" W 81° 14' 25.90" 06 W	L	1880.0	110.80	BZM	Not Used
		ESV:	Bearing [True]: 160.0° to 231.0° Bearing [Mag]: 166.0° to 237.0°		Arc Distance: Out to 70.0 NM Altitude: 4000.0 to 16000.0 ft		
		ESV:	Bearing [True]: 341.0° to 48.0° Bearing [Mag]: 347.0° to 54.0°		Arc Distance: Out to 68.0 NM Altitude: 6900.0 to 20000.0 ft		
5	GSO	N 36° 2' 44.49" W 79° 58' 34.95" 03 W	H	909.0	116.20	GSO	Used
		Restriction:	Bearing [True]: 252.0° to 287.0° Bearing [Mag]: 255.0° to 290.0°		Distance: Beyond 0.0 NM Altitude: Below 6000.0 ft		
		ESV:	Bearing [True]: 231.0° to 298.0° Bearing [Mag]: 234.0° to 301.0°		Arc Distance: Out to 76.0 NM Altitude: 5800.0 to 18000.0 ft		
		ESV:	Bearing [True]: 299.0° to 317.0° Bearing [Mag]: 302.0° to 320.0°		Arc Distance: Out to 85.0 NM Altitude: 7800.0 to 16000.0 ft		

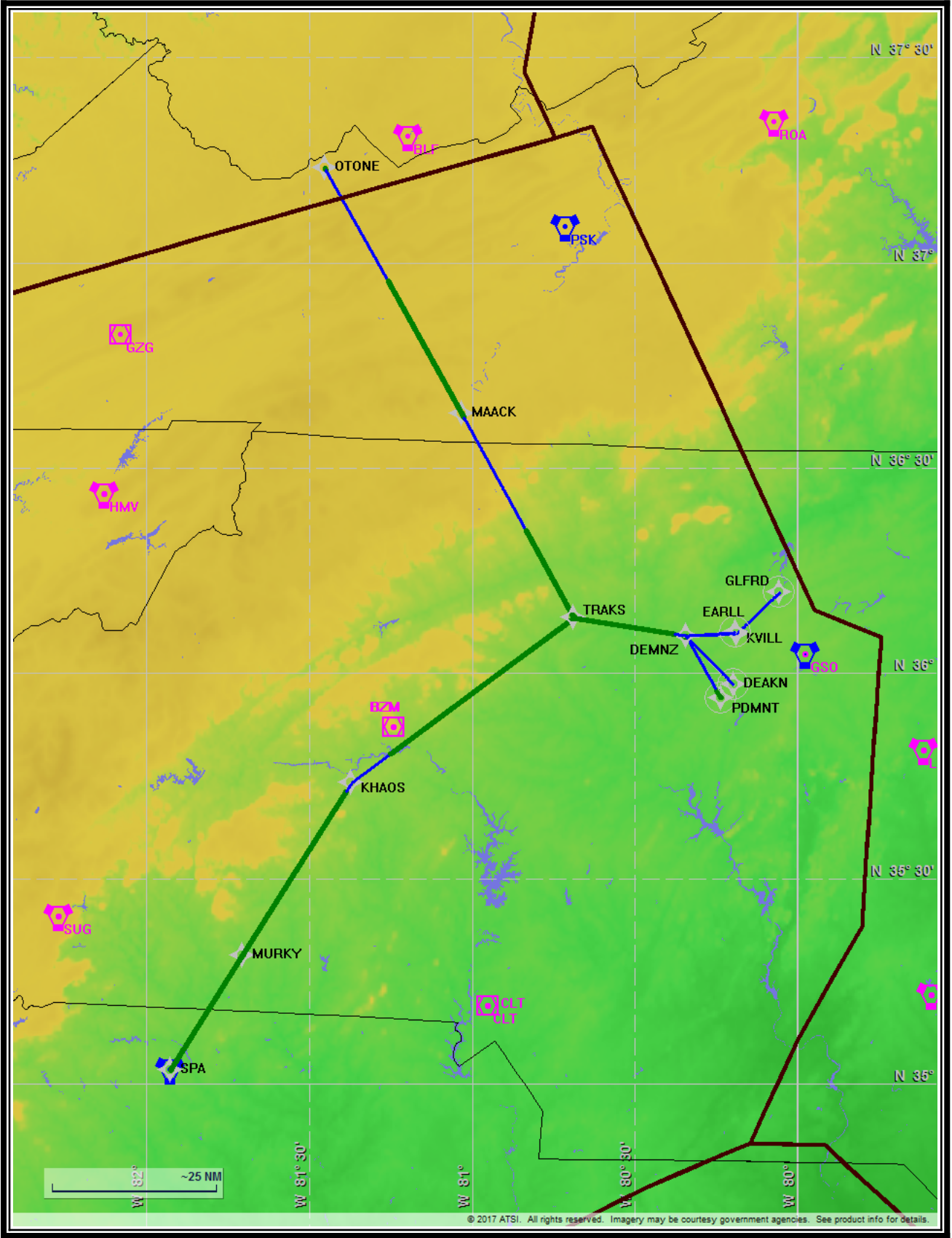
User Data (Continued)					Return To Summary		
User DMEs (Continued)							
#	Name	Lat/Lon/MAGVAR	Range	Elevation [ft]	Frequency	Replaces	Status
6	SDZ	N 35° 12' 55.73" W 79° 35' 16.57" 03 W	L	588.0	111.80	SDZ	Not Used
		ESV:	Bearing [True]: 301.0° to 313.0° Bearing [Mag]: 304.0° to 316.0°		Arc Distance: Out to 85.0 NM Altitude: 6900.0 to 20000.0 ft		
7	GRD	N 34° 15' 5.64" W 82° 9' 14.94" 01 W	H	630.0	115.50	GRD	Not Used
		ESV:	Bearing [True]: 16.0° to 28.0° Bearing [Mag]: 17.0° to 29.0°		Arc Distance: Out to 96.0 NM Altitude: 6900.0 to 16000.0 ft		
8	HMV	N 36° 26' 13.40" W 82° 7' 46.56" 04 W	L	4321.0	114.60	HMV	Not Used
		ESV:	Bearing [True]: 16.0° to 93.0° Bearing [Mag]: 20.0° to 97.0°		Arc Distance: Out to 56.0 NM Altitude: 6900.0 to 24000.0 ft		



Name: MARK SCHOENHOFF
Project Name: KGSO TRAKS2 STAR
Output File: KGSO TRAKS2 STAR
 OTONE GLFRD
 20170208_0838
Procedure Name: TRAKS2
Software: RNAV-Pro™
Version: 2.39g
Date/Time: 2/8/2017 8:39:48 AM
Input File: [KGSO TRAKS2 STAR
 OTONE GLFRD
 20170208_0756.txt](#)
Databases: AIRNAV Date: 1/24/2017
 CIFP Date: 8/18/2016
 DTED® (MAX) Date: 2002

Results Summary:

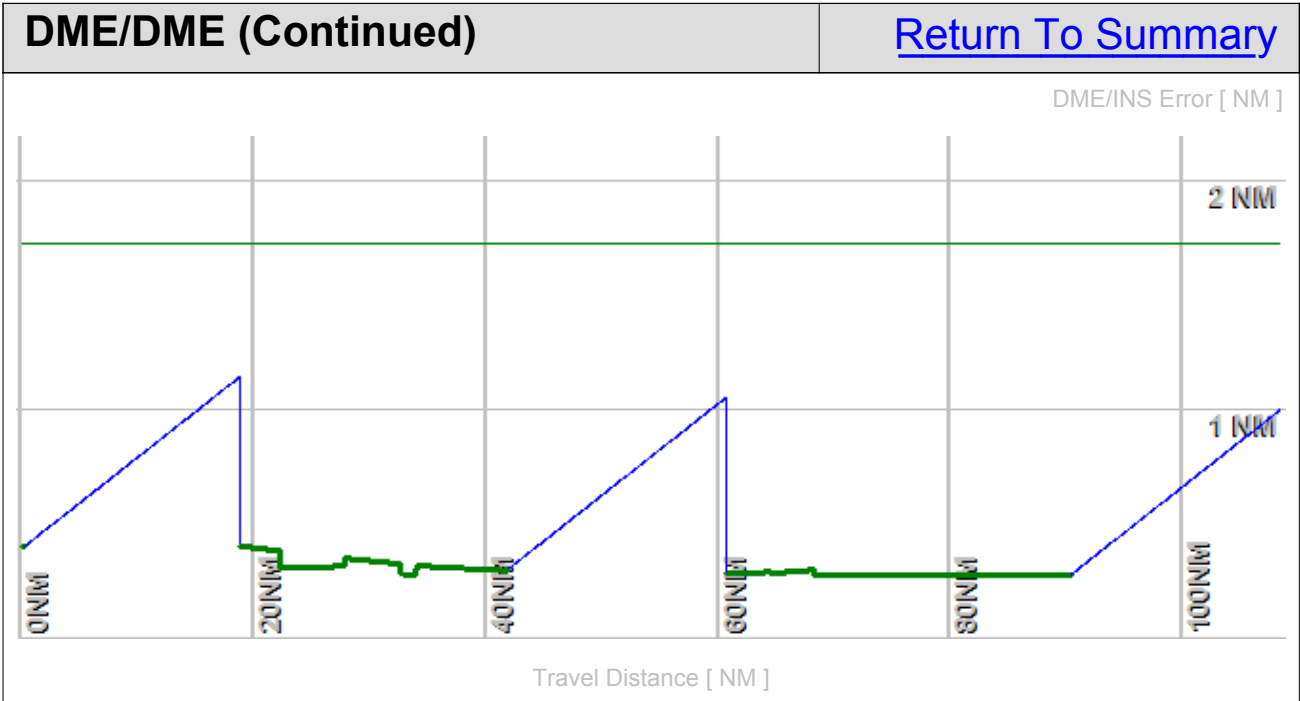
Flyability	✓	
DME/DME	✓	No Critical DMEs Exist
Radars	?	
Comms	?	
TERPS	?	



Flight Plan					Return To Summary		
Name	Type	Lat/Lon	Alt [ft]	VNAV Mode	IAS [Kts]	Turn Type	Leg Type
OTONE	WP	N 37° 13' 51.93" W 81° 27' 10.68"	8000.0	Step	180.0	Fly By	TF
MAACK	WP	N 36° 37' 55.07" W 81° 1' 52.36"	8000.0	Step	180.0	Fly By	TF
TRAKS	WP	N 36° 8' 5.89" W 80° 41' 15.52"	6900.0	Step	180.0	Fly By	TF
DEMNZ	WP	N 36° 5' 29.82" W 80° 20' 36.06"	5000.0	Step	180.0	Fly By	TF
KVILL	WP	N 36° 5' 46.78" W 80° 11' 14.62"	3300.0	Step	180.0	Fly By	TF
GLFRD	WP	N 36° 11' 50.35" W 80° 3' 20.01"	3300.0	Step	180.0	Fly Over	TF

Flyability		Return To Summary
Settings:	Flight Type: Arrival Selected Airport: KGSO Aircraft Category: Cat D Climb Gradient: <i>None assigned</i> Ground Speeds: Table: 200.0 Kts up to 11000.0 ft 240.0 Kts up to 18000.0 ft 260.0 Kts up to 24000.0 ft 340.0 Kts up to 99900.0 ft Wind Settings: <i>None assigned</i> Descent During a Turn: Allowed VNAV Mode: Flight Plan	
	Entire track is fly-able	

DME/DME		Return To Summary
Settings:	<p>RNP: 2.0</p> <p>Flight Mode: Manual</p> <p>Line of Sight (DTED Level 0 Max): Evaluated</p> <p>DME Restrictions: Evaluated</p> <p>Inertial Drift: Enabled</p> <p> Initial Drift: 0.558 NM</p> <p> INS Drift Rate: 8.000 NM/Hour</p> <p>Range Mode: OSV</p> <p>Co-Frequencies: Evaluated</p> <p>RNP Edges: Evaluated</p> <p>Min DME Range: 3.0 NM</p> <p>Allowed Gap Length: 4.0 NM</p> <p>DME Types: VOR/DME, VORTAC, Standalone, and User</p> <p>DME Include Angles: 30 to 150</p> <p>Critical DMEs: Allowed</p> <p>DoD Facilities: Not included</p> <p>Foreign Facilities: Not included</p> <p>Low DMEs: Included</p> <p>Terminal DMEs: Included</p> <p>Flight Check DMEs: Selected</p> <p>Higher Altitudes: Evaluated</p> <p>Near Maximum Altitude: Evaluated</p>	
<p>Total Number of DMEs Used: 8</p> <p>Maximum DME Error: 1.147 NM.</p> <p>No Critical DMEs were found.</p> <p>Available DMEs: BKW, BLF, BZM, GSO, HMY, PSK, CLT, LIB</p>		

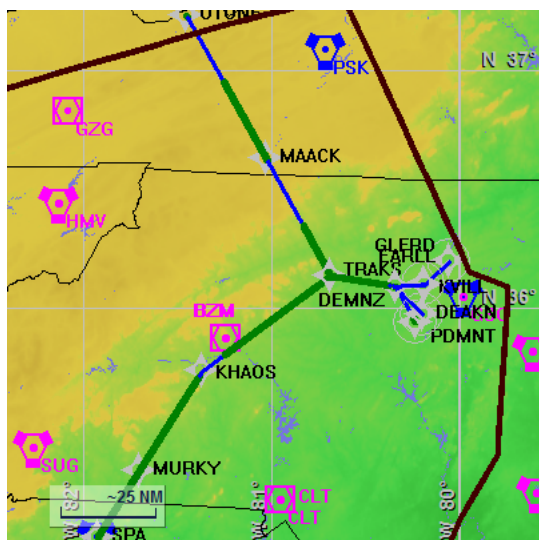


DME/DME (Continued)						Return To Summary			
DMEs Used									
#	Name	Lat/Lon/MAGVAR	Range	Source	Critical	Err. [NM]	Status	Time	Distance
1	BKW	N 37° 46' 49.08" W 81° 7' 24.44" 06 W	H	Database	NO	1.311	Enabled	0.3%	0.3%
2	BLF	N 37° 18' 23.19" W 81° 11' 39.37" 03 W	L	Database	NO	1.311	Enabled	0.3%	0.3%
3	BZM	N 35° 52' 7.87" W 81° 14' 25.90" 06 W	L + ESV	User	NO	1.348	Enabled	20.4%	20.4%
4	GSO	N 36° 2' 44.49" W 79° 58' 34.95" 03 W	H + ESV	User	NO	1.585	Enabled	32.5%	32.5%
5	HMV	N 36° 26' 13.40" W 82° 7' 46.56" 04 W	L + ESV	User	NO	1.147	Enabled	5.2%	5.2%
6	PSK	N 37° 5' 15.74" W 80° 42' 46.44" 06 W	H	Database	NO	1.147	Enabled	1.3%	1.3%
7	CLT	N 35° 11' 25.04" W 80° 57' 6.31" 05 W	L + ESV	User	NO	1.410	Enabled	21.7%	21.7%
8	LIB	N 35° 48' 41.84" W 79° 36' 45.33" 03 W	L + ESV	User	NO	1.398	Enabled	16.1%	16.1%
	Total Coverage							48.8%	48.8%
Flight Check DME Selection									
Distance [NM]		Selected DMEs						Alternate	
0.0		BKW	BLF	BZM					
18.1		GSO	HMV	BZM	PSK				
41.2		GSO	LIB	BZM	CLT				
74.6		GSO	LIB	BZM	CLT				
91.8		CLT	LIB						
99.1		GSO	LIB						
Inertial Drift Segments									
#	Start Location			End Location				Length [NM]	

Available DMEs by Waypoints		Return To Summary
Waypoint Before	Waypoint After	DME List
OTONE	MAACK	HMV, GSO, BZM, BKW, BLF, and PSK
MAACK	TRAKS	GSO, BZM, CLT, and LIB
TRAKS	DEMNZ	GSO, BZM, CLT, and LIB
DEMNZ	KVILL	CLT and LIB
KVILL	GLFRD	GSO and LIB

User Data					Return To Summary		
User Data Files							
#	File Name						
1	KGSO TRAKS STAR.udt						
User DMEs							
#	Name	Lat/Lon/MAGVAR	Range	Elevation [ft]	Frequency	Replaces	Status
1	LIB	N 35° 48' 41.84" W 79° 36' 45.33" 03 W	L	827.6	113.00	LIB	Used
		ESV:	Bearing [True]: 251.0° to 300.0° Bearing [Mag]: 254.0° to 303.0°		Arc Distance: Out to 68.0 NM Altitude: 5000.0 to 18000.0 ft		
2	CLT	N 35° 11' 25.04" W 80° 57' 6.31" 05 W	L	731.7	115.00	CLT	Used
		Restriction:	Bearing [True]: 45.0° to 95.0° Bearing [Mag]: 50.0° to 100.0°		Distance: Beyond 25.0 NM Altitude: Below 2500.0 ft		
		Restriction:	Bearing [True]: 10.0° to 45.0° Bearing [Mag]: 15.0° to 50.0°		Distance: Beyond 25.0 NM Altitude: Below 3000.0 ft		
		Restriction:	Bearing [True]: 265.0° to 345.0° Bearing [Mag]: 270.0° to 350.0°		Distance: Beyond 20.0 NM Altitude: Below 5000.0 ft		
		ESV:	Bearing [True]: 252.0° to 266.0° Bearing [Mag]: 257.0° to 271.0°		Arc Distance: Out to 55.0 NM Altitude: 3500.0 to 18000.0 ft		
		ESV:	Bearing [True]: 337.0° to 33.0° Bearing [Mag]: 342.0° to 38.0°		Arc Distance: Out to 66.0 NM Altitude: 5000.0 to 20000.0 ft		
		ESV:	Bearing [True]: 350.0° to 9.0° Bearing [Mag]: 355.0° to 14.0°		Arc Distance: Out to 83.0 NM Altitude: 6900.0 to 20000.0 ft		
3	SUG	N 35° 24' 23.42" W 82° 16' 7.01" 02 W	L	3970.0	112.20	SUG	Not Used
		ESV:	Bearing [True]: 22.0° to 89.0° Bearing [Mag]: 24.0° to 91.0°		Arc Distance: Out to 55.0 NM Altitude: 4000.0 to 15000.0 ft		
4	BZM	N 35° 52' 7.87" W 81° 14' 25.90" 06 W	L	1880.0	110.80	BZM	Used
		ESV:	Bearing [True]: 160.0° to 231.0° Bearing [Mag]: 166.0° to 237.0°		Arc Distance: Out to 70.0 NM Altitude: 4000.0 to 16000.0 ft		
		ESV:	Bearing [True]: 341.0° to 48.0° Bearing [Mag]: 347.0° to 54.0°		Arc Distance: Out to 68.0 NM Altitude: 6900.0 to 20000.0 ft		
5	GSO	N 36° 2' 44.49" W 79° 58' 34.95" 03 W	H	909.0	116.20	GSO	Used
		Restriction:	Bearing [True]: 252.0° to 287.0° Bearing [Mag]: 255.0° to 290.0°		Distance: Beyond 0.0 NM Altitude: Below 6000.0 ft		
		ESV:	Bearing [True]: 231.0° to 298.0° Bearing [Mag]: 234.0° to 301.0°		Arc Distance: Out to 76.0 NM Altitude: 5800.0 to 18000.0 ft		
		ESV:	Bearing [True]: 299.0° to 317.0° Bearing [Mag]: 302.0° to 320.0°		Arc Distance: Out to 85.0 NM Altitude: 7800.0 to 16000.0 ft		

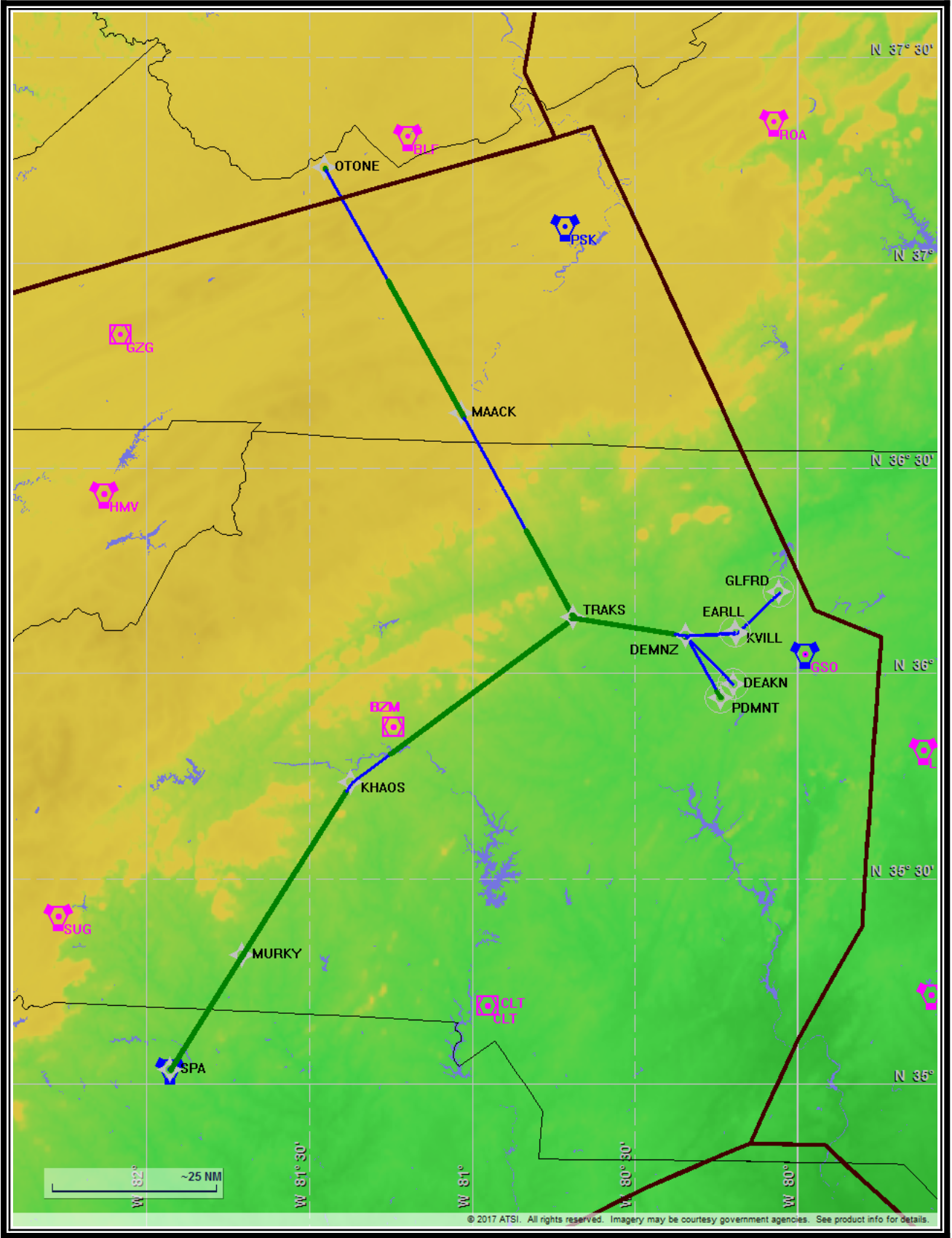
User Data (Continued)					Return To Summary		
User DMEs (Continued)							
#	Name	Lat/Lon/MAGVAR	Range	Elevation [ft]	Frequency	Replaces	Status
6	SDZ	N 35° 12' 55.73" W 79° 35' 16.57" 03 W	L	588.0	111.80	SDZ	Not Used
		ESV:	Bearing [True]: 301.0° to 313.0° Bearing [Mag]: 304.0° to 316.0°		Arc Distance: Out to 85.0 NM Altitude: 6900.0 to 20000.0 ft		
7	GRD	N 34° 15' 5.64" W 82° 9' 14.94" 01 W	H	630.0	115.50	GRD	Not Used
		ESV:	Bearing [True]: 16.0° to 28.0° Bearing [Mag]: 17.0° to 29.0°		Arc Distance: Out to 96.0 NM Altitude: 6900.0 to 16000.0 ft		
8	HMV	N 36° 26' 13.40" W 82° 7' 46.56" 04 W	L	4321.0	114.60	HMV	Used
		ESV:	Bearing [True]: 16.0° to 93.0° Bearing [Mag]: 20.0° to 97.0°		Arc Distance: Out to 56.0 NM Altitude: 6900.0 to 24000.0 ft		



Name: MARK SCHOENHOFF
Project Name: KGSO TRAKS2 STAR
Output File: KGSO TRAKS2 STAR
 TRAKS DEAKN
 20170208_0838
Procedure Name: TRAKS2
Software: RNAV-Pro™
Version: 2.39g
Date/Time: 2/8/2017 8:41:10 AM
Input File: [KGSO TRAKS2 STAR
 TRAKS DEAKN
 20170208_0812.txt](#)
Databases: AIRNAV Date: 1/24/2017
 CIFP Date: 8/18/2016
 DTED® (MAX) Date: 2002

Results Summary:

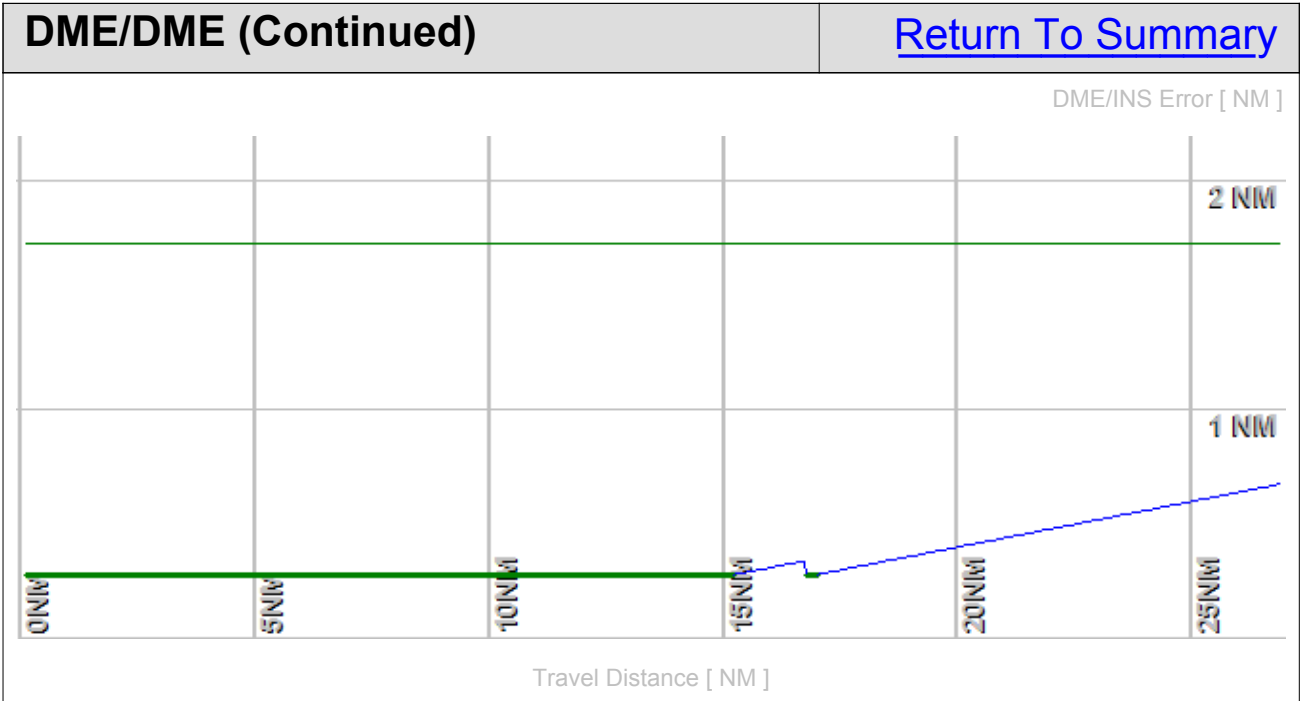
Flyability	✓	
DME/DME	✓	No Critical DMEs Exist
Radars	?	
Comms	?	
TERPS	?	



Flight Plan					Return To Summary		
Name	Type	Lat/Lon	Alt [ft]	VNAV Mode	IAS [Kts]	Turn Type	Leg Type
TRAKS	WP	N 36° 8' 5.89" W 80° 41' 15.52"	6900.0	Step	180.0	Fly By	TF
DEMNZ	WP	N 36° 5' 29.82" W 80° 20' 36.06"	5000.0	Step	180.0	Fly By	TF
DEAKN	WP	N 35° 58' 25.28" W 80° 11' 52.55"	3200.0	Step	180.0	Fly Over	TF

Flyability		Return To Summary
Settings:	Flight Type: Arrival Selected Airport: KGSO Aircraft Category: Cat D Climb Gradient: <i>None assigned</i> Ground Speeds: Table: 200.0 Kts up to 11000.0 ft 240.0 Kts up to 18000.0 ft 260.0 Kts up to 24000.0 ft 340.0 Kts up to 99900.0 ft Wind Settings: <i>None assigned</i> Descent During a Turn: Allowed VNAV Mode: Flight Plan	
	Entire track is fly-able	

DME/DME		Return To Summary
Settings:	RNP: 2.0	
	Flight Mode: Manual	
	Line of Sight (DTED Level 0 Max):	Evaluated
	DME Restrictions:	Evaluated
	Inertial Drift:	Enabled
	Initial Drift:	0.558 NM
	INS Drift Rate:	8.000 NM/Hour
	Range Mode:	OSV
	Co-Frequencies:	Evaluated
	RNP Edges:	Evaluated
	Min DME Range:	3.0 NM
	Allowed Gap Length:	4.0 NM
	DME Types:	VOR/DME, VORTAC, Standalone, and User
	DME Include Angles:	30 to 150
	Critical DMEs:	Allowed
	DoD Facilities:	Not included
Foreign Facilities:	Not included	
Low DMEs:	Included	
Terminal DMEs:	Included	
Flight Check DMEs:	Selected	
Higher Altitudes:	Evaluated	
Near Maximum Altitude:	Evaluated	
Total Number of DMEs Used: 3		
Maximum DME Error: 0.677 NM.		
No Critical DMEs were found.		
Available DMEs: LIB, CLT, BZM, GSO		

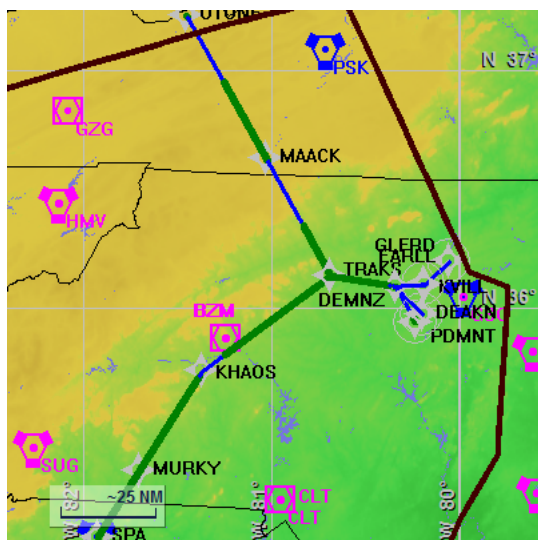


DME/DME (Continued)						Return To Summary			
DMEs Used									
#	Name	Lat/Lon/MAGVAR	Range	Source	Critical	Err. [NM]	Status	Time	Distance
1	CLT	N 35° 11' 25.04" W 80° 57' 6.31" 05 W	L + ESV	User	NO	1.156	Enabled	57.2%	57.2%
2	GSO	N 36° 2' 44.49" W 79° 58' 34.95" 03 W	H + ESV	User	NO	0.677	Enabled	5.4%	5.4%
3	LIB	N 35° 48' 41.84" W 79° 36' 45.33" 03 W	L + ESV	User	NO	1.144	Enabled	51.9%	51.9%
	Total Coverage							57.2%	57.2%
Flight Check DME Selection									
Distance [NM]		Selected DMEs						Alternate	
0.0		CLT	LIB	GSO	BZM				
16.3		CLT	LIB						
Inertial Drift Segments									
#	Start Location			End Location			Length [NM]		
1	N 36° 5' 45.80" W 80° 22' 41.46"			N 36° 5' 29.91" W 80° 20' 52.28"			1.5		
VOR: GSO				Available from N 36° 5' 45.80" W 80° 22' 41.46" to N 36° 5' 29.91" W 80° 20' 52.28"					
VOR: LIB				Available from N 36° 5' 35.97" W 80° 21' 24.26" to N 36° 5' 29.91" W 80° 20' 52.28"					
2	N 36° 5' 22.88" W 80° 20' 33.54"			N 35° 58' 25.74" W 80° 11' 53.11"			9.9		
VOR: GSO				Available from N 36° 5' 22.88" W 80° 20' 33.54" to N 35° 58' 25.74" W 80° 11' 53.11"					
VOR: LIB				Available from N 36° 5' 22.88" W 80° 20' 33.54" to N 35° 58' 25.74" W 80° 11' 53.11"					

Available DMEs by Waypoints		Return To Summary
Waypoint Before	Waypoint After	DME List
TRAKS	DEMNZ	GSO, BZM, CLT, and LIB
DEMNZ	DEAKN	CLT and LIB

User Data					Return To Summary		
User Data Files							
#	File Name						
1	KGSO TRAKS STAR.udt						
User DMEs							
#	Name	Lat/Lon/MAGVAR	Range	Elevation [ft]	Frequency	Replaces	Status
1	LIB	N 35° 48' 41.84" W 79° 36' 45.33" 03 W	L	827.6	113.00	LIB	Used
		ESV:	Bearing [True]: 251.0° to 300.0° Bearing [Mag]: 254.0° to 303.0°		Arc Distance: Out to 68.0 NM Altitude: 5000.0 to 18000.0 ft		
2	CLT	N 35° 11' 25.04" W 80° 57' 6.31" 05 W	L	731.7	115.00	CLT	Used
		Restriction:	Bearing [True]: 45.0° to 95.0° Bearing [Mag]: 50.0° to 100.0°		Distance: Beyond 25.0 NM Altitude: Below 2500.0 ft		
		Restriction:	Bearing [True]: 10.0° to 45.0° Bearing [Mag]: 15.0° to 50.0°		Distance: Beyond 25.0 NM Altitude: Below 3000.0 ft		
		Restriction:	Bearing [True]: 265.0° to 345.0° Bearing [Mag]: 270.0° to 350.0°		Distance: Beyond 20.0 NM Altitude: Below 5000.0 ft		
		ESV:	Bearing [True]: 252.0° to 266.0° Bearing [Mag]: 257.0° to 271.0°		Arc Distance: Out to 55.0 NM Altitude: 3500.0 to 18000.0 ft		
		ESV:	Bearing [True]: 337.0° to 33.0° Bearing [Mag]: 342.0° to 38.0°		Arc Distance: Out to 66.0 NM Altitude: 5000.0 to 20000.0 ft		
		ESV:	Bearing [True]: 350.0° to 9.0° Bearing [Mag]: 355.0° to 14.0°		Arc Distance: Out to 83.0 NM Altitude: 6900.0 to 20000.0 ft		
3	SUG	N 35° 24' 23.42" W 82° 16' 7.01" 02 W	L	3970.0	112.20	SUG	Not Used
		ESV:	Bearing [True]: 22.0° to 89.0° Bearing [Mag]: 24.0° to 91.0°		Arc Distance: Out to 55.0 NM Altitude: 4000.0 to 15000.0 ft		
4	BZM	N 35° 52' 7.87" W 81° 14' 25.90" 06 W	L	1880.0	110.80	BZM	Not Used
		ESV:	Bearing [True]: 160.0° to 231.0° Bearing [Mag]: 166.0° to 237.0°		Arc Distance: Out to 70.0 NM Altitude: 4000.0 to 16000.0 ft		
		ESV:	Bearing [True]: 341.0° to 48.0° Bearing [Mag]: 347.0° to 54.0°		Arc Distance: Out to 68.0 NM Altitude: 6900.0 to 20000.0 ft		
5	GSO	N 36° 2' 44.49" W 79° 58' 34.95" 03 W	H	909.0	116.20	GSO	Used
		Restriction:	Bearing [True]: 252.0° to 287.0° Bearing [Mag]: 255.0° to 290.0°		Distance: Beyond 0.0 NM Altitude: Below 6000.0 ft		
		ESV:	Bearing [True]: 231.0° to 298.0° Bearing [Mag]: 234.0° to 301.0°		Arc Distance: Out to 76.0 NM Altitude: 5800.0 to 18000.0 ft		
		ESV:	Bearing [True]: 299.0° to 317.0° Bearing [Mag]: 302.0° to 320.0°		Arc Distance: Out to 85.0 NM Altitude: 7800.0 to 16000.0 ft		

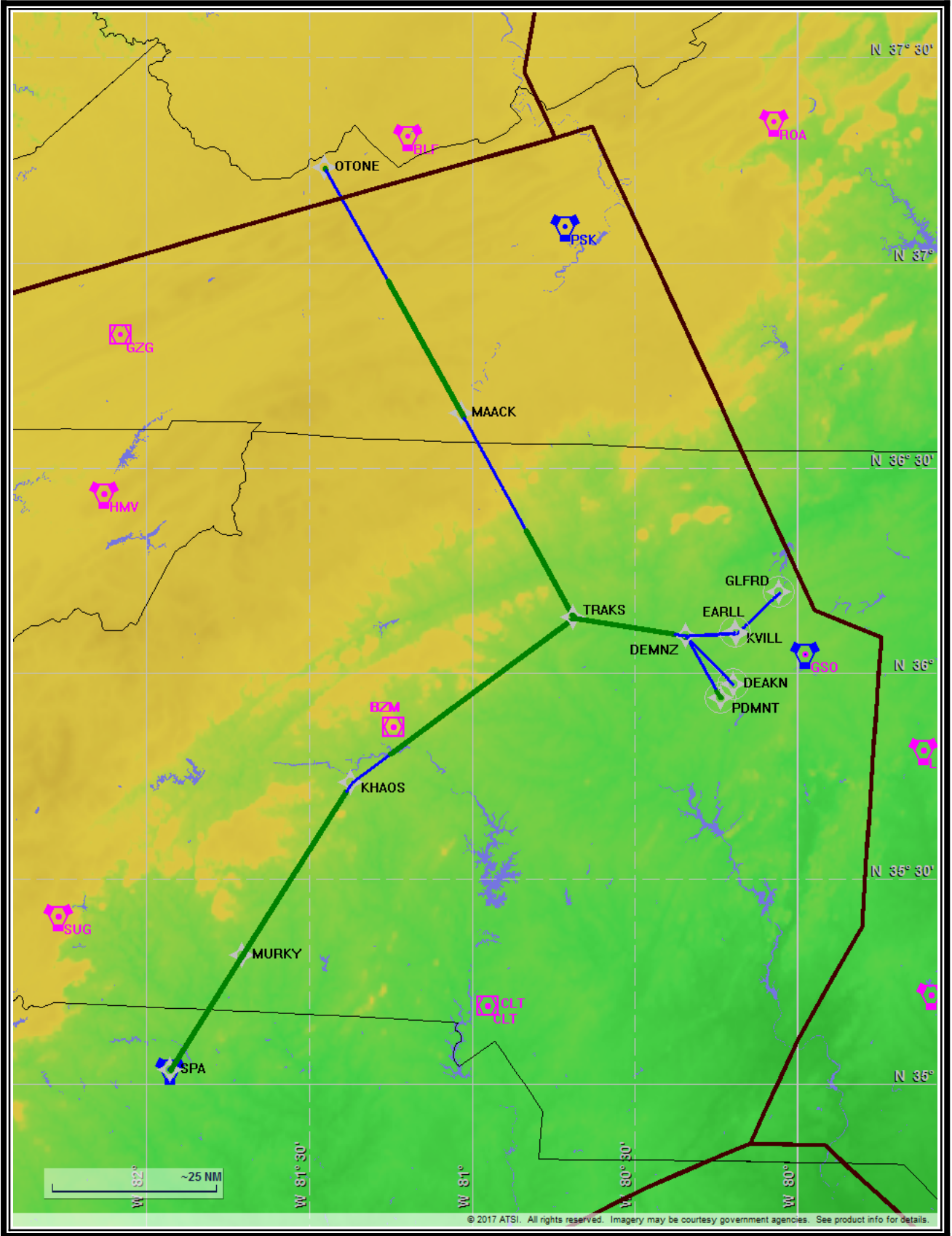
User Data (Continued)					Return To Summary		
User DMEs (Continued)							
#	Name	Lat/Lon/MAGVAR	Range	Elevation [ft]	Frequency	Replaces	Status
6	SDZ	N 35° 12' 55.73" W 79° 35' 16.57" 03 W	L	588.0	111.80	SDZ	Not Used
		ESV:	Bearing [True]: 301.0° to 313.0° Bearing [Mag]: 304.0° to 316.0°		Arc Distance: Out to 85.0 NM Altitude: 6900.0 to 20000.0 ft		
7	GRD	N 34° 15' 5.64" W 82° 9' 14.94" 01 W	H	630.0	115.50	GRD	Not Used
		ESV:	Bearing [True]: 16.0° to 28.0° Bearing [Mag]: 17.0° to 29.0°		Arc Distance: Out to 96.0 NM Altitude: 6900.0 to 16000.0 ft		
8	HMV	N 36° 26' 13.40" W 82° 7' 46.56" 04 W	L	4321.0	114.60	HMV	Not Used
		ESV:	Bearing [True]: 16.0° to 93.0° Bearing [Mag]: 20.0° to 97.0°		Arc Distance: Out to 56.0 NM Altitude: 6900.0 to 24000.0 ft		



Name: MARK SCHOENHOFF
Project Name: KGSO TRAKS2 STAR
Output File: KGSO TRAKS2 STAR SPA PDMNT 20170208_0838
Procedure Name: TRAKS2
Software: RNAV-Pro™
Version: 2.39g
Date/Time: 2/8/2017 8:40:28 AM
Input File: [KGSO TRAKS2 STAR SPA PDMNT 20170208_0759.txt](#)
Databases: AIRNAV Date: 1/24/2017
 CIPF Date: 8/18/2016
 DTED® (MAX) Date: 2002

Results Summary:

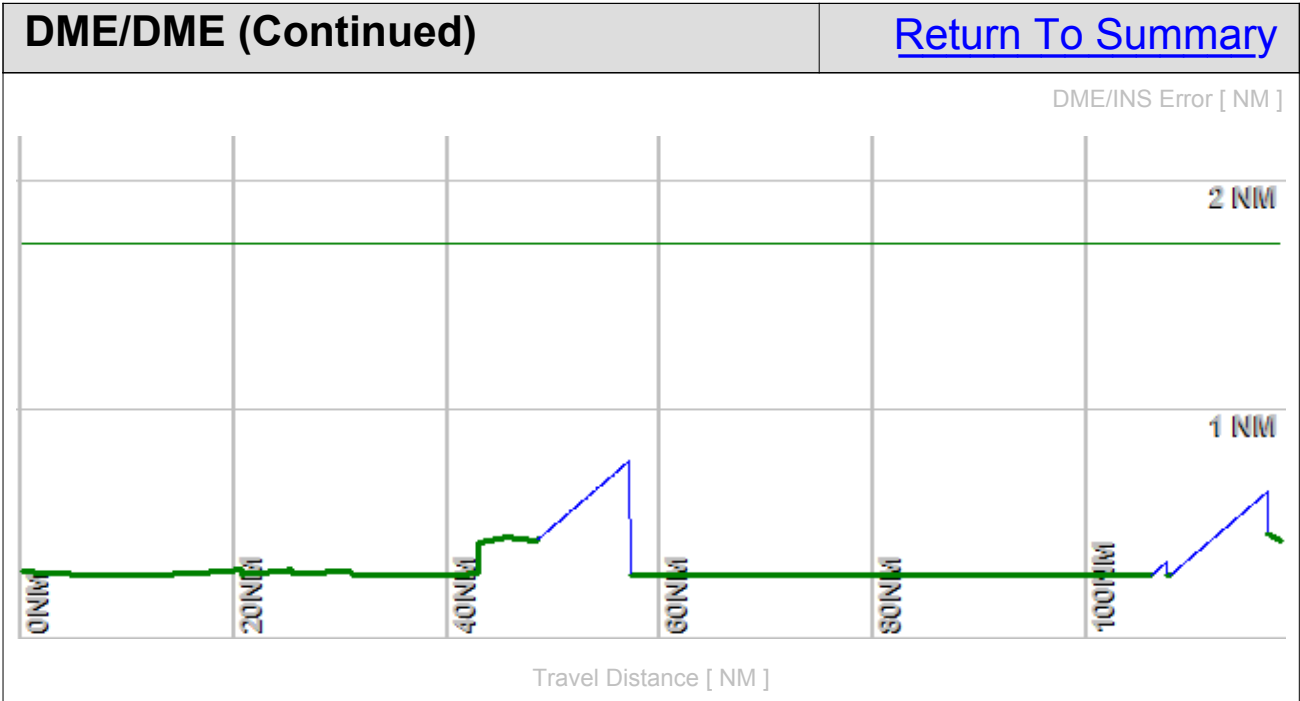
Flyability	✓	
DME/DME	✓	No Critical DMEs Exist
Radars	?	
Comms	?	
TERPS	?	



Flight Plan					Return To Summary		
Name	Type	Lat/Lon	Alt [ft]	VNAV Mode	IAS [Kts]	Turn Type	Leg Type
SPA	WP	N 35° 2' 1.05" W 81° 55' 37.24"	6900.0	Step	180.0	Fly By	TF
MURKY	WP	N 35° 18' 49.18" W 81° 42' 20.30"	6900.0	Step	180.0	Fly By	TF
KHAOS	WP	N 35° 43' 58.55" W 81° 22' 14.49"	6900.0	Step	180.0	Fly By	TF
TRAKS	WP	N 36° 8' 5.89" W 80° 41' 15.52"	6900.0	Step	180.0	Fly By	TF
DEMNZ	WP	N 36° 5' 29.82" W 80° 20' 36.06"	5000.0	Step	180.0	Fly By	TF
PDMNT	WP	N 35° 56' 25.41" W 80° 14' 9.53"	3200.0	Step	180.0	Fly Over	TF

Flyability		Return To Summary
Settings:	Flight Type: Arrival	
	Selected Airport: KGSO	
	Aircraft Category: Cat D	
	Climb Gradient: <i>None assigned</i>	
	Ground Speeds:	
	Table:	
	200.0 Kts up to 11000.0 ft	
	240.0 Kts up to 18000.0 ft	
	260.0 Kts up to 24000.0 ft	
	340.0 Kts up to 99900.0 ft	
	Wind Settings: <i>None assigned</i>	
	Descent During a Turn: Allowed	
	VNAV Mode: Flight Plan	
Entire track is fly-able		

DME/DME		Return To Summary
Settings:	RNP: 2.0	
	Flight Mode: Manual	
	Line of Sight (DTED Level 0 Max):	Evaluated
	DME Restrictions:	Evaluated
	Inertial Drift:	Enabled
	Initial Drift:	0.558 NM
	INS Drift Rate:	8.000 NM/Hour
	Range Mode:	OSV
	Co-Frequencies:	Evaluated
	RNP Edges:	Evaluated
	Min DME Range:	3.0 NM
	Allowed Gap Length:	4.0 NM
	DME Types:	VOR/DME, VORTAC, Standalone, and User
	DME Include Angles:	30 to 150
	Critical DMEs:	Allowed
DoD Facilities:	Not included	
Foreign Facilities:	Not included	
Low DMEs:	Included	
Terminal DMEs:	Included	
Flight Check DMEs:	Selected	
Higher Altitudes:	Evaluated	
Near Maximum Altitude:	Evaluated	
Total Number of DMEs Used: 7		
Maximum DME Error: 0.781 NM.		
No Critical DMEs were found.		
Available DMEs: CLT, SUG, BZM, SPA, GRD, GSO, SDZ, LIB		



DME/DME (Continued)						Return To Summary			
DMEs Used									
#	Name	Lat/Lon/MAGVAR	Range	Source	Critical	Err. [NM]	Status	Time	Distance
1	SUG	N 35° 24' 23.42" W 82° 16' 7.01" 02 W	L + ESV	User	NO	1.219	Enabled	24.2%	24.2%
2	BZM	N 35° 52' 7.87" W 81° 14' 25.90" 06 W	L + ESV	User	NO	0.781	Enabled	18.2%	18.2%
3	SPA	N 35° 2' 1.05" W 81° 55' 37.24" 02 W	H	Database	NO	0.781	Enabled	9.5%	9.5%
4	GRD	N 34° 15' 5.64" W 82° 9' 14.94" 01 W	H + ESV	User	NO	0.856	Enabled	13.4%	13.4%
5	CLT	N 35° 11' 25.04" W 80° 57' 6.31" 05 W	L + ESV	User	NO	1.470	Enabled	56.6%	56.6%
6	GSO	N 36° 2' 44.49" W 79° 58' 34.95" 03 W	H + ESV	User	NO	1.039	Enabled	32.8%	32.8%
7	LIB	N 35° 48' 41.84" W 79° 36' 45.33" 03 W	L + ESV	User	NO	1.160	Enabled	12.9%	12.9%
	Total Coverage							83.7%	83.7%
Flight Check DME Selection									
Distance [NM]		Selected DMEs						Alternate	
0.0		BZM	SUG	SPA	CLT				
20.0		BZM	SUG	SPA	CLT	GRD			
30.1		BZM	SUG	GSO	CLT	GRD	SPA		
49.5		BZM	SUG	GSO	CLT				
59.6		BZM	SDZ	GSO	CLT	LIB			
90.4		BZM	GSO	CLT	LIB				
107.2		GSO	CLT	LIB					
Inertial Drift Segments									
#	Start Location			End Location				Length [NM]	

Available DMEs by Waypoints		Return To Summary
Waypoint Before	Waypoint After	DME List
SPA	MURKY	BZM, SUG, CLT, and SPA
MURKY	KHAOS	GRD, GSO, BZM, SUG, CLT, and SPA
KHAOS	TRAKS	SDZ, GSO, BZM, SUG, CLT, and LIB
TRAKS	DEMNZ	GSO, BZM, CLT, and LIB
DEMNZ	PDMNT	GSO, CLT, and LIB

User Data					Return To Summary		
User Data Files							
#	File Name						
1	KGSO TRAKS STAR.udt						
User DMEs							
#	Name	Lat/Lon/MAGVAR	Range	Elevation [ft]	Frequency	Replaces	Status
1	LIB	N 35° 48' 41.84" W 79° 36' 45.33" 03 W	L	827.6	113.00	LIB	Used
		ESV:	Bearing [True]: 251.0° to 300.0° Bearing [Mag]: 254.0° to 303.0°		Arc Distance: Out to 68.0 NM Altitude: 5000.0 to 18000.0 ft		
2	CLT	N 35° 11' 25.04" W 80° 57' 6.31" 05 W	L	731.7	115.00	CLT	Used
		Restriction:	Bearing [True]: 45.0° to 95.0° Bearing [Mag]: 50.0° to 100.0°		Distance: Beyond 25.0 NM Altitude: Below 2500.0 ft		
		Restriction:	Bearing [True]: 10.0° to 45.0° Bearing [Mag]: 15.0° to 50.0°		Distance: Beyond 25.0 NM Altitude: Below 3000.0 ft		
		Restriction:	Bearing [True]: 265.0° to 345.0° Bearing [Mag]: 270.0° to 350.0°		Distance: Beyond 20.0 NM Altitude: Below 5000.0 ft		
		ESV:	Bearing [True]: 252.0° to 266.0° Bearing [Mag]: 257.0° to 271.0°		Arc Distance: Out to 55.0 NM Altitude: 3500.0 to 18000.0 ft		
		ESV:	Bearing [True]: 337.0° to 33.0° Bearing [Mag]: 342.0° to 38.0°		Arc Distance: Out to 66.0 NM Altitude: 5000.0 to 20000.0 ft		
		ESV:	Bearing [True]: 350.0° to 9.0° Bearing [Mag]: 355.0° to 14.0°		Arc Distance: Out to 83.0 NM Altitude: 6900.0 to 20000.0 ft		
3	SUG	N 35° 24' 23.42" W 82° 16' 7.01" 02 W	L	3970.0	112.20	SUG	Used
		ESV:	Bearing [True]: 22.0° to 89.0° Bearing [Mag]: 24.0° to 91.0°		Arc Distance: Out to 55.0 NM Altitude: 4000.0 to 15000.0 ft		
4	BZM	N 35° 52' 7.87" W 81° 14' 25.90" 06 W	L	1880.0	110.80	BZM	Used
		ESV:	Bearing [True]: 160.0° to 231.0° Bearing [Mag]: 166.0° to 237.0°		Arc Distance: Out to 70.0 NM Altitude: 4000.0 to 16000.0 ft		
		ESV:	Bearing [True]: 341.0° to 48.0° Bearing [Mag]: 347.0° to 54.0°		Arc Distance: Out to 68.0 NM Altitude: 6900.0 to 20000.0 ft		
5	GSO	N 36° 2' 44.49" W 79° 58' 34.95" 03 W	H	909.0	116.20	GSO	Used
		Restriction:	Bearing [True]: 252.0° to 287.0° Bearing [Mag]: 255.0° to 290.0°		Distance: Beyond 0.0 NM Altitude: Below 6000.0 ft		
		ESV:	Bearing [True]: 231.0° to 298.0° Bearing [Mag]: 234.0° to 301.0°		Arc Distance: Out to 76.0 NM Altitude: 5800.0 to 18000.0 ft		
		ESV:	Bearing [True]: 299.0° to 317.0° Bearing [Mag]: 302.0° to 320.0°		Arc Distance: Out to 85.0 NM Altitude: 7800.0 to 16000.0 ft		

User Data (Continued)					Return To Summary		
User DMEs (Continued)							
#	Name	Lat/Lon/MAGVAR	Range	Elevation [ft]	Frequency	Replaces	Status
6	SDZ	N 35° 12' 55.73" W 79° 35' 16.57" 03 W	L	588.0	111.80	SDZ	Not Used
		ESV:	Bearing [True]: 301.0° to 313.0° Bearing [Mag]: 304.0° to 316.0°		Arc Distance: Out to 85.0 NM Altitude: 6900.0 to 20000.0 ft		
7	GRD	N 34° 15' 5.64" W 82° 9' 14.94" 01 W	H	630.0	115.50	GRD	Used
		ESV:	Bearing [True]: 16.0° to 28.0° Bearing [Mag]: 17.0° to 29.0°		Arc Distance: Out to 96.0 NM Altitude: 6900.0 to 16000.0 ft		
8	HMV	N 36° 26' 13.40" W 82° 7' 46.56" 04 W	L	4321.0	114.60	HMV	Not Used
		ESV:	Bearing [True]: 16.0° to 93.0° Bearing [Mag]: 20.0° to 97.0°		Arc Distance: Out to 56.0 NM Altitude: 6900.0 to 24000.0 ft		