

FEDERAL AVIATION ADMINISTRATION  
FLIGHT STANDARDS SERVICE  
STANDARD TERMINAL ARRIVAL (STAR)

Bearings, headings, courses, tracks and radials are magnetic. Elevations and altitudes are in feet, MSL. Altitudes are minimum altitudes unless otherwise indicated.  
Distances are in nautical miles (NM). Graphic depictions attached.

Arrival Name FILPZ (RNAV)	Number THREE	STAR Computer Code JJENY.FILPZ3	Superseded Number TWO	Dated 07/21/2016	Effective Date				
TRANSITION ROUTES:									
Transition Name	Transition Computer Codes	From FIX/NAVAID	To FIX/NAVAID	Mag Course	Distance	MEA	MOCA	MAA	Crossing Altitudes / Fixes
COMDY	COMDY.FILPZ3	COMDY	COMDY						
			BLAYQ	112.22	15.42	13000	7200		
			PHAYE	112.20	23.42	13000	7200		AT/ABOVE FL240
			JJENY	112.56	21.15	11000	8300		BETWEEN FL190 AND FL270
SKYWA	SKYWA.FILPZ3	SKYWA	SKYWA						
			NIZAM	137.97	14.96	13000	5100		
			COMDY	137.97	42.72	13000	5100		
			BLAYQ	112.22	15.42	13000	7200		
			PHAYE	112.20	23.42	13000	7200		AT/ABOVE FL240
			JJENY	112.56	21.15	11000	8300		BETWEEN FL190 AND FL270
TAZZA	TAZZA.FILPZ3	TAZZA	TAZZA						
			COMDY	091.92	57.61	13000	5000		
			BLAYQ	112.22	15.42	13000	7200		
			PHAYE	112.20	23.42	13000	7200		AT/ABOVE FL240
			JJENY	112.56	21.15	11000	8300		BETWEEN FL190 AND FL270

**ARRIVAL ROUTE DESCRIPTION:**

FROM JJENY ON TRACK 112.81/11.27 TO CROSS FILPZ AT OR ABOVE 16000 AND AT 270 KIAS.

LANDING RWY 36L/C/R, 05: FROM FILPZ ON TRACK 120.79/20.31 TO CROSS ADOWN BETWEEN 12000 AND 19000 AND AT 250 KIAS, THEN ON TRACK 115.99/10.11 TO CROSS INWAL BETWEEN 11000 AND 15000 AND AT 250 KIAS, THEN ON TRACK 116.07/13.54 TO CROSS JELNO BETWEEN 10000 AND 11000, THEN ON TRACK 116.18/8.00 TO CROSS CEDOX AT 9000 AND AT 210 KIAS, THEN ON TRACK 182.83/12.00 TO CROSS VALLL AT 6000 AND AT 210 KIAS, THEN ON TRACK 182.83. EXPECT RADAR VECTORS TO FINAL APPROACH COURSE.

LANDING RWY 18L/C/R, 23: FROM FILPZ ON TRACK 109.48/15.71 TO CROSS GLAXI AT OR ABOVE 12000 AND AT 250 KIAS, THEN ON TRACK 109.54/7.73 TO CROSS JOBOT BETWEEN 11000 AND 12000 AND AT 250 KIAS, THEN ON TRACK 090.13/6.16 TO CROSS ERHRT AT OR BELOW 10000, THEN ON TRACK 090.19/13.18 TO CROSS FISHN AT 7000 AND AT 210 KIAS, THEN ON TRACK 090.19. EXPECT RADAR VECTORS TO FINAL APPROACH COURSE.

**PROCEDURAL DATA NOTES:**

NOTE: RADAR REQUIRED

NOTE: RNAV 1

NOTE: DME/DME/IRU OR GPS REQUIRED

NOTE: TURBOJET AIRCRAFT ONLY

NOTE: EXPECT "DESCEND VIA" CLEARANCE AND LANDING DIRECTION ASSIGNMENT (NORTH or SOUTH) BY ARTCC. FOR VERTICAL NAVIGATION PLANNING, LANDING SOUTH, SELECT RWY18R, LANDING NORTH, SELECT RWY36L.

CHART NOTE: CLT APPROACH WILL ASSIGN LANDING RUNWAY.

CHART NOTE: DESCEND VIA MACH NUMBER UNTIL INTERCEPTING 270 KIAS. MAINTAIN 270 KIAS UNTIL SLOWED BY THE STAR OR ASSIGNED BY ATC.



FEDERAL AVIATION ADMINISTRATION  
FLIGHT STANDARDS SERVICE  
STANDARD TERMINAL ARRIVAL (STAR)

Bearings, headings, courses, tracks and radials are magnetic. Elevations and altitudes are in feet, MSL. Altitudes are minimum altitudes unless otherwise indicated.  
Distances are in nautical miles (NM). Graphic depictions attached.

Arrival Name	Number	STAR Computer Code	Superseded Number	Dated	Effective Date
<b>FILPZ (RNAV)</b>	<b>THREE</b>	<b>JJENY.FILPZ3</b>	<b>TWO</b>	<b>07/21/2016</b>	

CHART NOTE AT FISHN: LANDING SOUTH RWY 18L/C/R, 23. EXPECT RADAR VECTORS TO FINAL APPROACH COURSE after FISHN.

CHART NOTE AT VALLL: LANDING NORTH RWY 36L/C/R, 5. EXPECT RADAR VECTORS TO FINAL APPROACH COURSE after VALLL.

FIXES AND/OR HOLDING PATTERNS:

CHART HOLDING AT FILPZ: HOLD NW, LT, 112.81 INBOUND, 10 NM LEGS.

CHART HOLDING AT LIINN: HOLD NW, RT, 121.00 INBOUND, 10 NM LEGS.

CHART HOLDING AT PHAYE: HOLD W, LT, 112.20 INBOUND, 10 NM LEGS.

COMMUNICATIONS:

CHARLOTTE APP CON, CHARLOTTE ARR ATIS.

AIRPORTS SERVED:

CHARLOTTE/DOUGLAS INTL, CHARLOTTE, NC

LOST COMMUNICATIONS PROCEDURE:

REMARKS:

ADDITIONAL FLIGHT DATA:

DME/DME ASSESSMENT: SAT (RNP 2.0)

REFERENCE MAGNETIC VARIATION = KCLT 07W/2000

CHART N92.

CHART NEAR N92: CAUTION: PARACHUTE JUMPING 5NM NE FISHN, 3.0 NM RADIUS N92 (LANEY FIELD), AOB 11,500 MSL.

FEDERAL AVIATION ADMINISTRATION  
FLIGHT STANDARDS SERVICE  
STANDARD TERMINAL ARRIVAL (STAR)

Bearings, headings, courses, tracks and radials are magnetic. Elevations and altitudes are in feet, MSL. Altitudes are minimum altitudes unless otherwise indicated.  
Distances are in nautical miles (NM). Graphic depictions attached.

Arrival Name	Number	STAR Computer Code	Superseded Number	Dated	Effective Date
FILPZ (RNAV)	THREE	JJENY.FILPZ3	TWO	07/21/2016	
FLIGHT INSPECTED BY:					
Name	Organization	Date	Signature		
DEVELOPED BY:					
CHERYL ZIMBROSKI (FAA), JAMES WILLIAMS (NATCA)	CLT METROPLEX	02/09/2017			
Name	Organization	Date	Signature		
APPROVED BY:					
MARLON J. ROBINSON, MANAGER	AJV-5440				
Name	Organization	Date	Signature		

CHANGES:

- 1). CHANGED WAYPOINT NAME at PIPPS to GLAXI.
- 2). MOVED JELNO .24NM NORTHWEST.
- 3). MOVED VALLL .56NM SOUTH.
- 4). REMOVED MEA'S and MOCA'S FROM COMMON ROUTE AND RUNWAY TRANSITIONS.

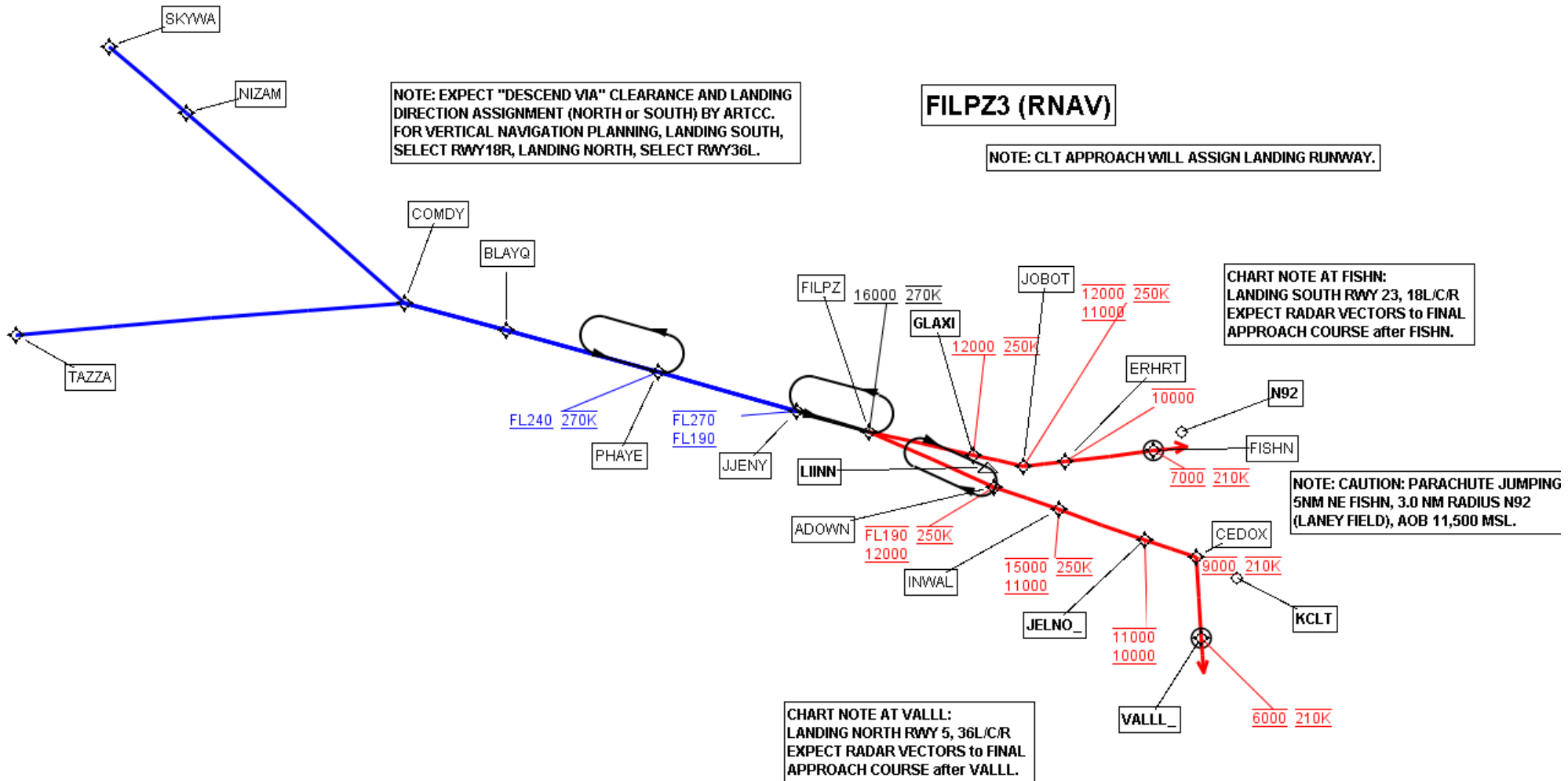
REASONS:

- 1). PIPPS NAME CHANGE TO PREVENT POSSIBLE HEARBACK MISCOMMUNICATION DUE TO SIMILAR SOUNDING WAYPOINTS(FILPZ & PIPPS) ON PROCEDURE.
- 2-3). ELIMINATE LEG LENGTH FAILURES FROM TARGETS 5.20 REFERENCE SOFTWARE OUTPUT.
- 4). IAW 8260.3C.

FEDERAL AVIATION ADMINISTRATION  
FLIGHT STANDARDS SERVICE  
STANDARD TERMINAL ARRIVAL (STAR)

Bearings, headings, courses, tracks and radials are magnetic. Elevations and altitudes are in feet, MSL. Altitudes are minimum altitudes unless otherwise indicated.  
Distances are in nautical miles (NM). Graphic depictions attached.

Arrival Name	Number	STAR Computer Code	Superseded Number	Dated	Effective Date
FILPZ (RNAV)	THREE	JJENY.FILPZ3	TWO	07/21/2016	
Graphic Depiction 1					



FEDERAL AVIATION ADMINISTRATION  
FLIGHT STANDARDS SERVICE  
STAR (DATA RECORD)

Arrival Name FILPZ (RNAV)	Number THREE	STAR Computer Code JJENY.FILPZ3		Superseded Number TWO		Dated 07/21/2016		Effective Date	
FIX/NAVAID	LAT/LONG	C	FO/FB	LEG TYPE	TC	DIST (NM)	ALTITUDE	SPEED	REMARKS
En Route Transition									
COMDY	355337.26N / 0832801.28W	Y		IF					COMDY.FILPZ3
BLAYQ	354932.60N / 0830943.09W	Y	FB	TF	105.22	15.42			
PHAYE	354320.41N / 0824157.66W	Y	FB	TF	105.20	23.42	AT/ABOVE FL240	AT 270K	
JJENY	353736.86N / 0821657.77W	Y	FB	TF	105.56	21.15	FL190BFL270		
En Route Transition									
SKYWA	363137.31N / 0842142.40W	Y		IF					SKYWA.FILPZ3
NIZAM	362146.96N / 0840743.06W	Y	FB	TF	130.97	14.96			
COMDY	355337.26N / 0832801.28W	Y	FB	TF	130.97	42.72			
BLAYQ	354932.60N / 0830943.09W	Y	FB	TF	105.22	15.42			
PHAYE	354320.41N / 0824157.66W	Y	FB	TF	105.20	23.42	AT/ABOVE FL240	AT 270K	
JJENY	353736.86N / 0821657.77W	Y	FB	TF	105.56	21.15	FL190BFL270		
En Route Transition									
TAZZA	354851.72N / 0843838.87W	Y		IF					TAZZA.FILPZ3
COMDY	355337.26N / 0832801.28W	Y	FB	TF	084.92	57.61			
BLAYQ	354932.60N / 0830943.09W	Y	FB	TF	105.22	15.42			
PHAYE	354320.41N / 0824157.66W	Y	FB	TF	105.20	23.42	AT/ABOVE FL240	AT 270K	
JJENY	353736.86N / 0821657.77W	Y	FB	TF	105.56	21.15	FL190BFL270		
Common Route									
JJENY	353736.86N / 0821657.77W	Y		IF			FL190BFL270		JJENY.FILPZ3
FILPZ	353431.56N / 0820340.14W	Y	FB	TF	105.81	11.27	AT/ABOVE 16000	AT 270K	
Runway Transition									
FILPZ	353431.56N / 0820340.14W	Y		IF			AT/ABOVE 16000	AT 270K	
ADOWN	352617.14N / 0814055.87W	Y	FB	TF	113.79	20.31	12000BFL190	AT 250K	
INWAL	352258.84N / 0812914.35W	Y	FB	TF	108.99	10.11	11000B15000	AT 250K	
JELNO	351831.95N / 0811335.92W	Y	FB	TF	109.07	13.54	10000B11000		

FEDERAL AVIATION ADMINISTRATION  
FLIGHT STANDARDS SERVICE  
STAR (DATA RECORD)

Arrival Name FILPZ (RNAV)	Number THREE	STAR Computer Code JJENY.FILPZ3		Superseded Number TWO		Dated 07/21/2016	Effective Date		
FIX/NAVAID	LAT/LONG	C	FO/FB	LEG TYPE	TC	DIST (NM)	ALTITUDE	SPEED	REMARKS
CEDOX	351553.64N / 0810422.20W	Y	FB	TF	109.18	08.00	AT 9000	AT 210K	
VALLL	350354.40N / 0810318.39W	Y	FO	TF	175.83	12.00	AT 6000	AT 210K	
KCLT:RWY 05,RWY 36C,RWY 36L,RWY 36R				FM	175.83	RECOMMENDED NAVAID: ILM VORTAC			
Runway Transition									
FILPZ	353431.56N / 0820340.14W	Y		IF			AT/ABOVE 16000	AT 270K	
GLAXI	353106.09N / 0814452.96W	Y	FB	TF	102.48	15.71	AT/ABOVE 12000	AT 250K	
JOBOT	352924.88N / 0813538.45W	Y	FB	TF	102.54	07.73	11000B12000	AT 250K	
ERHRT	353008.91N / 0812808.86W	Y	FB	TF	083.13	06.16	AT/BELOW 10000		
FISHN	353141.80N / 0811207.07W	Y	FO	TF	083.19	13.18	AT 7000	AT 210K	
KCLT:RWY 18C,RWY 18L,RWY 18R,RWY 23				FM	083.19	RECOMMENDED NAVAID: ILM VORTAC			