

FEDERAL AVIATION ADMINISTRATION
FLIGHT STANDARDS SERVICE
STANDARD TERMINAL ARRIVAL (STAR)

Bearings, headings, courses, tracks and radials are magnetic. Elevations and altitudes are in feet, MSL. Altitudes are minimum altitudes unless otherwise indicated.
Distances are in nautical miles (NM). Graphic depictions attached.

Arrival Name	Number	STAR Computer Code	Superseded Number	Dated	Effective Date
BANKR (RNAV)	TWO	BANKR.BANKR2	ONE	07/21/2016	

TRANSITION ROUTES:

Transition Name	Transition Computer Codes	From FIX/NAVAID	To FIX/NAVAID	Mag Course	Distance	MEA	MOCA	MAA	Crossing Altitudes / Fixes
PONZE	PONZE.BANKR2	PONZE	PONZE						AT/ABOVE FL270
			NTRST	027.47	10.59	11000	2000		AT/ABOVE FL240
			CHKNG	028.58	06.03	11000	2000		
			CRDET	038.03	18.54	11000	1900		AT/ABOVE 17000
			BANKR	038.14	12.68	11000	2000		BETWEEN 13000 AND FL220

ARRIVAL ROUTE DESCRIPTION:

FROM BANKR ON TRACK 040.38/7.88 TO CROSS DEBBT BETWEEN 12000 AND 21000 AND AT 250 KIAS.

LANDING RWY 05: FROM DEBBT ON TRACK 069.97/3.03 TO CROSS CONTR AT OR ABOVE 11000, THEN ON TRACK 070.33/3.22 TO CROSS OPALS BETWEEN 10000 AND 12000, THEN ON TRACK 070.34/10.02 TO CROSS BLNCE AT 9000 AND AT 210 KIAS, THEN ON HEADING 018.00. EXPECT RADAR VECTORS TO FINAL APPROACH COURSE.

LANDING RWY 18L/C/R: FROM DEBBT ON TRACK 040.30/14.66 TO CROSS ROBRR BETWEEN 12000 AND 16000, THEN ON TRACK 050.12/6.38 TO CROSS FOBAR BETWEEN 12000 AND 14000, THEN ON TRACK 050.17/4.50 TO CROSS DEELX AT 12000 AND AT 250 KIAS, THEN ON TRACK 050.20/5.00 TO STKUP, THEN ON TRACK 002.85/6.77 TO DOSBE, THEN ON TRACK 002.82/2.31 TO AAIRE, THEN ON TRACK 002.83/12.00 TO JRDEN, THEN ON TRACK 002.83. EXPECT RADAR VECTORS TO FINAL APPROACH COURSE.

LANDING RWY 23: FROM DEBBT ON TRACK 040.30/14.66 TO CROSS ROBRR BETWEEN 12000 AND 16000, THEN ON TRACK 050.12/6.38 TO CROSS FOBAR BETWEEN 12000 AND 14000, THEN ON TRACK 050.17/4.50 TO CROSS DEELX AT 12000 AND AT 250 KIAS, THEN ON TRACK 050.20/5.00 TO STKUP, THEN ON TRACK 002.85/6.77 TO DOSBE, THEN ON TRACK 020.57/2.37 TO RRIKK, THEN ON TRACK 023.65/8.00 TO FLAIR, THEN ON TRACK 055.50/4.53 TO WOOOO, THEN ON TRACK 055.50. EXPECT RADAR VECTORS TO FINAL APPROACH COURSE.

LANDING RWY 36L/C/R: FROM DEBBT ON TRACK 069.97/3.03 TO CROSS CONTR AT OR ABOVE 11000, THEN ON TRACK 070.33/3.22 TO CROSS OPALS BETWEEN 10000 AND 12000, THEN ON TRACK 070.34/10.02 TO CROSS BLNCE AT 9000 AND AT 210 KIAS, THEN ON HEADING 090.00. EXPECT RADAR VECTORS TO FINAL APPROACH COURSE.

PROCEDURAL DATA NOTES:

NOTE: RADAR REQUIRED

NOTE: RNAV 1

NOTE: DME/DME/IRU OR GPS REQUIRED

NOTE: TURBOJET AIRCRAFT ONLY

NOTE: EXPECT "DESCEND VIA" CLEARANCE AND LANDING DIRECTION ASSIGNMENT (NORTH or SOUTH) BY ARTCC. FOR VERTICAL NAVIGATION PLANNING, LANDING SOUTH, SELECT RWY18R, LANDING NORTH, SELECT RWY36L.

CHART NOTE at JRDEN: LANDING SOUTH RWY 18L/C/R: EXPECT RADAR VECTORS TO FINAL APPROACH COURSE after JRDEN.

CHART NOTE at WOOOO: LANDING SOUTH RWY 23: EXPECT RADAR VECTORS to FINAL APPROACH COURSE after WOOOO.

CHART NOTE at BLNCE: LANDING NORTH RWY 36L/C/R, 5: EXPECT RADAR VECTORS to FINAL APPROACH COURSE after BLNCE.

CHART NOTE: DESCEND VIA MACH NUMBER UNTIL INTERCEPTING 270 KIAS. MAINTAIN 270 KIAS UNTIL SLOWED BY THE STAR OR ASSIGNED BY ATC.

NOTE: CLT APPROACH WILL ASSIGN LANDING RUNWAY.

FIXES AND/OR HOLDING PATTERNS:

CHART HOLDING AT GRD VORTAC: HOLD SW, RT, 062.00 INBOUND, 10 NM LEGS.

CHART HOLDING AT BANKR: HOLD SW, RT, 038.15 INBOUND, 10 NM LEGS.

CHART HOLDING AT JONZE: HOLD SW, LT, 064.56 INBOUND, 10 NM LEGS.

CHART HOLDING AT KUPPP: HOLD SW, LT, 063.82 INBOUND, 10 NM LEGS.

CHART HOLDING AT CLT VOR/DME: HOLD S, RT, 011.00 INBOUND, 10 NM LEGS.

FEDERAL AVIATION ADMINISTRATION
FLIGHT STANDARDS SERVICE
STANDARD TERMINAL ARRIVAL (STAR)

Bearings, headings, courses, tracks and radials are magnetic. Elevations and altitudes are in feet, MSL. Altitudes are minimum altitudes unless otherwise indicated.
Distances are in nautical miles (NM). Graphic depictions attached.

Arrival Name	Number	STAR Computer Code	Superseded Number	Dated	Effective Date
BANKR (RNAV)	TWO	BANKR.BANKR2	ONE	07/21/2016	

COMMUNICATIONS:

CHARLOTTE APP CON, CHARLOTTE ARR ATIS.

AIRPORTS SERVED:

CHARLOTTE/DOUGLAS INTL, CHARLOTTE, NC.

LOST COMMUNICATIONS PROCEDURE:

RWYs 18L/C/R, AFTER JRDEN TURN RIGHT DIRECT CLT VOR/DME AND HOLD MAINTAIN 12000.

RWY 23, AFTER WOOOO TURN RIGHT DIRECT CLT VOR/DME AND HOLD MAINTAIN 12000.

REMARKS:

ADDITIONAL FLIGHT DATA:

DME/DME ASSESSMENT: SAT (RNP 2.0)

REFERENCE MAGNETIC VARIATION = KCLT 07W/2000

CHART: KDCM (CHESTER-CATAWBA REGIONAL AIRPORT).

CHART NOTE NEAR KDCM: USE CAUTION: PARACHUTE JUMPING 16NM NE DEBBT, 3.00 NM RADIUS KDCM (CHESTER-CATAWBA REGIONAL AIRPORT), AOB 14,500 MSL.

FLIGHT INSPECTED BY:

Name	Organization	Date	Signature
------	--------------	------	-----------

DEVELOPED BY:

CHERYL ZIBROWSKI (FAA), JIM WILLIAMS (NATCA)	<i>Digitally signed by</i> CASIMIR L TABAKA	CLT METROPLEX	03/28/2017	
Name	Apr 18, 2017	Organization	Date	Signature

APPROVED BY:

MARLON J. ROBINSON, MANAGER	<i>Digitally signed by</i> CASIMIR L TABAKA	AJV-5440		
Name	Apr 18, 2017	Organization	Date	Signature

CHANGES:

- 1). ADDED STANDALONE WP (KUPPP) WITH HOLDING.
- 2). ADDED NEW WAYPOINT OPALS on RWY5, 36L, 36C, 36R TRANSITION, WITH BLOCK ALTITUDE 10000B12000.
- 3). REMOVED MEA/MOCA VALUES ON COMMON ROUTE and RUNWAY TRANSITIONS.
- 4). MOVED RRIKK .11NM DOWNTRACK.
- 5). MOVED JRDEN .59NM UPTRACK.
- 6). MOVED CONTR .76NM UPTRACK.
- 7). MOVED CRDET 1.20NM DOWNTRACK.

FEDERAL AVIATION ADMINISTRATION
FLIGHT STANDARDS SERVICE
STANDARD TERMINAL ARRIVAL (STAR)

Bearings, headings, courses, tracks and radials are magnetic. Elevations and altitudes are in feet, MSL. Altitudes are minimum altitudes unless otherwise indicated.
Distances are in nautical miles (NM). Graphic depictions attached.

Arrival Name	Number	STAR Computer Code	Superseded Number	Dated	Effective Date
BANKR (RNAV)	TWO	BANKR.BANKR2	ONE	07/21/2016	

- 8). REMOVED ALTITUDE (FL210) at CHKNG.
- 9). ADDED ALTITUDE RESTRICTION at PONZE (AT/ABOVE FL270).
- 10). ADDED LOST COMM.
- 11). LOWERED MOCA CHKNG-CRDET FROM 2000 to 1900.
- 12). CHANGED ALTITUDE RESTRICTION: AT ROBR from AT/BELOW 16000 to BETWEEN 12000 AND 16000; AT FOBAR from AT/BELOW 14000 to BETWEEN 12000 AND 14000.

REASONS:

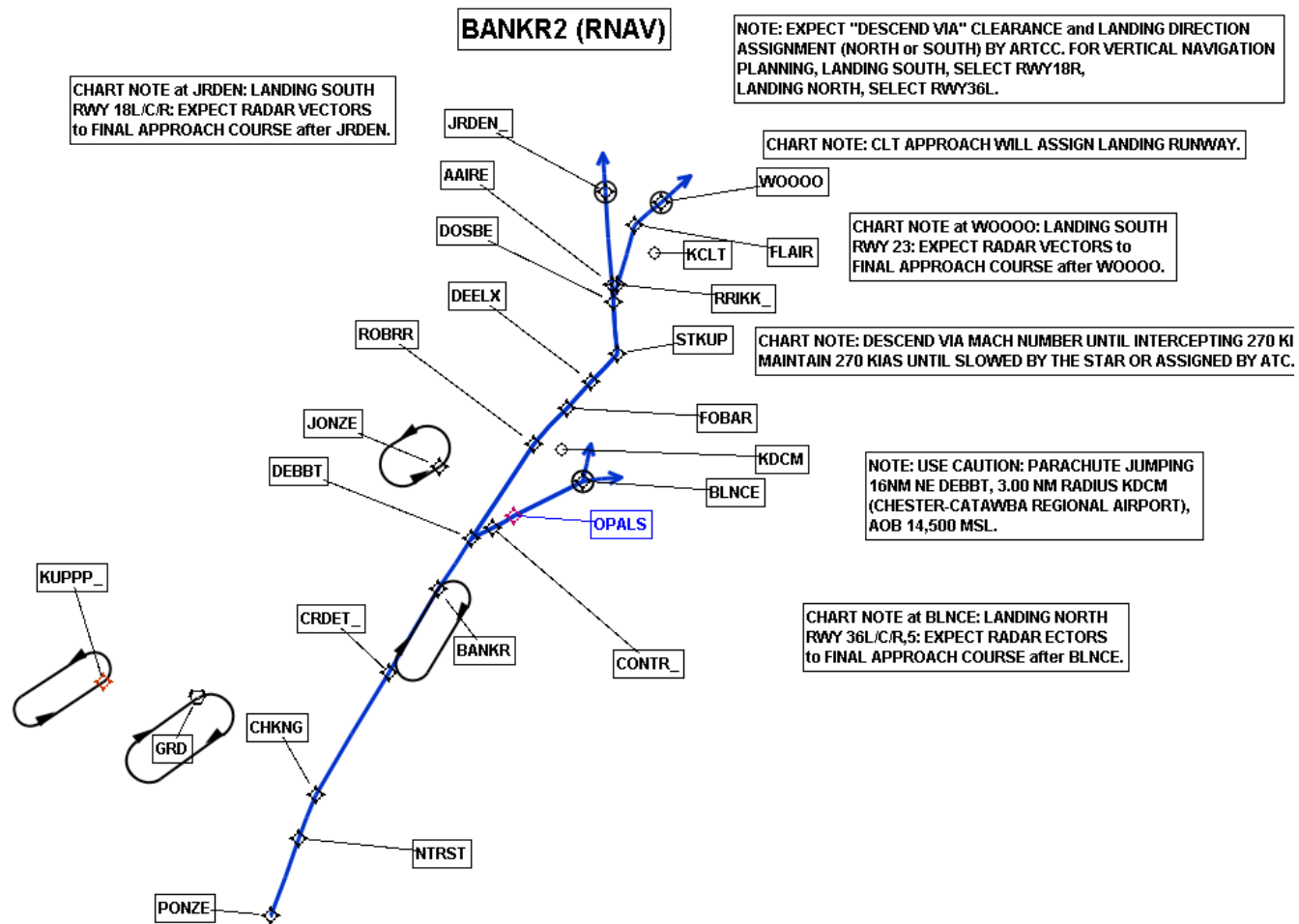
- 1). PROVIDE ADDITIONAL HOLDING OPTIONS.
- 2). PROVIDE MORE EFFICIENT VERTICAL PATH for NORTH OPERATIONS.
- 3). REQUIRED BY 8260.3C.
- 4-7). INCREASED LEG LENGTH REQUIRED BY NEW DESCENT GRADIENT CRITERIA.
- 8-9). PROVIDES MORE EFFICIENT PROFILE.
- 10). IAW 8260.19C, 4-5-1 (B).
- 11). CRDET WAS MOVED UPTRACK RESULTING IN LOWER CONTROLLING OBSTACLE.
- 12). TO MEET DESCENT GRADIENT REQUIREMENTS.



FEDERAL AVIATION ADMINISTRATION
FLIGHT STANDARDS SERVICE
STANDARD TERMINAL ARRIVAL (STAR)

Bearings, headings, courses, tracks and radials are magnetic. Elevations and altitudes are in feet, MSL. Altitudes are minimum altitudes unless otherwise indicated. Distances are in nautical miles (NM). Graphic depictions attached.

Arrival Name	Number	STAR Computer Code	Superseded Number	Dated	Effective Date
BANKR (RNAV)	TWO	BANKR.BANKR2	ONE	07/21/2016	
Graphic Depiction 1					

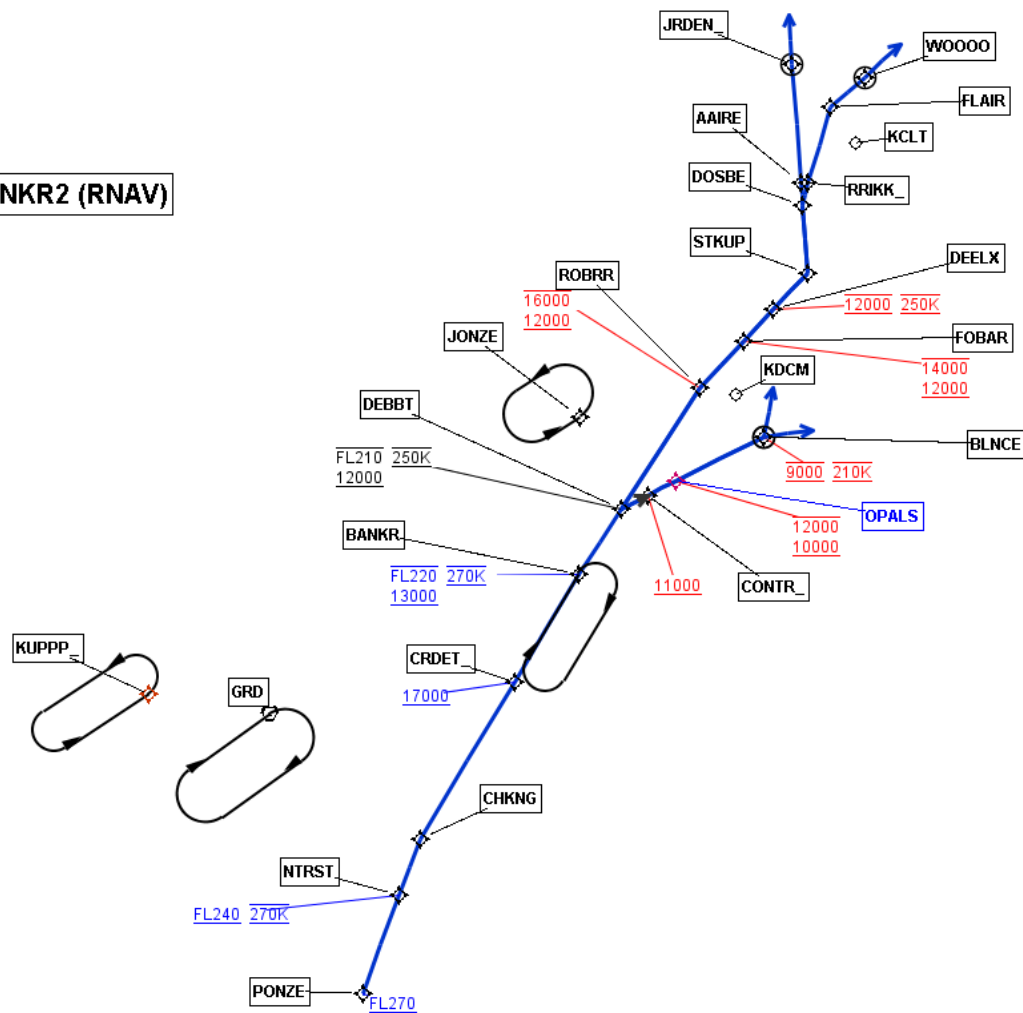


FEDERAL AVIATION ADMINISTRATION
FLIGHT STANDARDS SERVICE
STANDARD TERMINAL ARRIVAL (STAR)

Bearings, headings, courses, tracks and radials are magnetic. Elevations and altitudes are in feet, MSL. Altitudes are minimum altitudes unless otherwise indicated.
Distances are in nautical miles (NM). Graphic depictions attached.

Arrival Name	Number	STAR Computer Code	Superseded Number	Dated	Effective Date
BANKR (RNAV)	TWO	BANKR.BANKR2	ONE	07/21/2016	
Graphic Depiction 2					

BANKR2 (RNAV)



FEDERAL AVIATION ADMINISTRATION
FLIGHT STANDARDS SERVICE
STAR (DATA RECORD)

Arrival Name BANKR (RNAV)		Number TWO		STAR Computer Code BANKR.BANKR2		Superseded Number ONE		Dated 07/21/2016	Effective Date
FIX/NAVAID	LAT/LONG	C	FO/FB	LEG TYPE	TC	DIST (NM)	ALTITUDE	SPEED	REMARKS
En Route Transition									
PONZE	334654.76N / 0815745.93W	Y		IF			AT/ABOVE FL270		PONZE.BANKR2
NTRST	335651.21N / 0815318.78W	Y	FB	TF	020.47	10.59	AT/ABOVE FL240	AT 270K	
CHKNG	340228.02N / 0815038.74W	Y	FB	TF	021.58	06.03			
CRDET	341822.51N / 0813906.45W	Y	FB	TF	031.03	18.54	AT/ABOVE 17000		
BANKR	342914.56N / 0813110.42W	Y	FB	TF	031.14	12.68	13000BFL220	AT 270K	
Common Route									
BANKR	342914.56N / 0813110.42W	Y		IF			13000BFL220	AT 270K	BANKR.BANKR2
DEBBT	343550.16N / 0812555.16W	Y	FB	TF	033.38	07.88	12000BFL210	AT 250K	
Runway Transition									
DEBBT	343550.16N / 0812555.16W	Y		IF			12000BFL210	AT 250K	
CONTR	343713.00N / 0812238.63W	Y	FB	TF	062.97	03.03	AT/ABOVE 11000		
OPALS	343839.88N / 0811909.23W	Y	FB	TF	063.33	03.22	10000B12000		
BLNCE	344309.50N / 0810817.57W	Y	FO	TF	063.34	10.02	AT 9000	AT 210K	
KCLT:RWY 05				VM	011.00				
Runway Transition									
DEBBT	343550.16N / 0812555.16W	Y		IF			12000BFL210	AT 250K	
ROBRR	344806.11N / 0811608.77W	Y	FB	TF	033.30	14.66	12000B16000		
FOBAR	345245.93N / 0811050.64W	Y	FB	TF	043.12	06.38	12000B14000		
DEELX	345603.12N / 0810705.98W	Y	FB	TF	043.17	04.50	AT 12000	AT 250K	
STKUP	345942.02N / 0810256.12W	Y	FB	TF	043.20	05.00			
DOSBE	350628.09N / 0810332.01W	Y	FB	TF	355.85	06.77			
AAIRE	350846.57N / 0810344.33W	Y	FB	TF	355.82	02.31			
JRDEN	352045.79N / 0810448.30W	Y	FO	TF	355.83	12.00			
KCLT:RWY 18C,RWY 18L,RWY 18R				FM	355.83				REFERENCE NAVAID ILM VORTAC

FEDERAL AVIATION ADMINISTRATION
FLIGHT STANDARDS SERVICE
STAR (DATA RECORD)

Arrival Name BANKR (RNAV)	Number TWO	STAR Computer Code BANKR.BANKR2	Superseded Number ONE	Dated 07/21/2016	Effective Date
-------------------------------------	----------------------	---	---------------------------------	----------------------------	----------------

FIX/NAVAID	LAT/LONG	C	FO/FB	LEG TYPE	TC	DIST (NM)	ALTITUDE	SPEED	REMARKS
Runway Transition									
DEBBT	343550.16N / 0812555.16W	Y		IF			12000BFL210	AT 250K	
ROBRR	344806.11N / 0811608.77W	Y	FB	TF	033.30	14.66	12000B16000		
FOBAR	345245.93N / 0811050.64W	Y	FB	TF	043.12	06.38	12000B14000		
DEELX	345603.12N / 0810705.98W	Y	FB	TF	043.17	04.50	AT 12000	AT 250K	
STKUP	345942.02N / 0810256.12W	Y	FB	TF	043.20	05.00			
DOSBE	350628.09N / 0810332.01W	Y	FB	TF	355.85	06.77			
RRIKK	350846.52N / 0810251.32W	Y	FB	TF	013.57	02.37			
FLAIR	351627.21N / 0810003.34W	Y	FB	TF	016.65	08.00			
WOOOO	351927.51N / 0805554.62W	Y	FO	TF	048.50	04.53			
KCLT:RWY 23				FM	048.50				REFERENCE NAVAID ILM VORTAC

Runway Transition									
DEBBT	343550.16N / 0812555.16W	Y		IF			12000BFL210	AT 250K	
CONTR	343713.00N / 0812238.63W	Y	FB	TF	062.97	03.03	AT/ABOVE 11000		
OPALS	343839.88N / 0811909.23W	Y	FB	TF	063.33	03.22	10000B12000		
BLNCE	344309.50N / 0810817.57W	Y	FO	TF	063.34	10.02	AT 9000	AT 210K	
KCLT:RWY 36C,RWY 36L,RWY 36R				VM	083.00				