

FEDERAL AVIATION ADMINISTRATION
FLIGHT STANDARDS SERVICE
STANDARD TERMINAL ARRIVAL (STAR)

Bearings, headings, courses, tracks and radials are magnetic. Elevations and altitudes are in feet, MSL. Altitudes are minimum altitudes unless otherwise indicated.
Distances are in nautical miles (NM). Graphic depictions attached.

Arrival Name	Number	STAR Computer Code	Superseded Number	Dated	Effective Date
JONZE (RNAV)	TWO	JONZE.JONZE2	ONE	07/21/2016	

TRANSITION ROUTES:

Transition Name	Transition Computer Codes	From FIX/NAVAID	To FIX/NAVAID	Mag Course	Distance	MEA	MOCA	MAA	Crossing Altitudes / Fixes
BESTT	BESTT.JONZE2	BESTT	BESTT						
			CNTLR	080.55	16.42	FL180	2400		
			EVRRR	066.71	19.72	FL180	2200		
			KUPPP	063.82	49.65	FL180	2300		AT/ABOVE FL240
			CAAKE	064.31	26.98	17000	2400		BETWEEN 17000 AND FL260
			JONZE	064.56	25.20	10000	2200		BETWEEN 11000 AND FL210
CNTLR	CNTLR.JONZE2	CNTLR	CNTLR						
			EVRRR	066.71	19.72	FL180	2200		
			KUPPP	063.82	49.65	FL180	2300		AT/ABOVE FL240
			CAAKE	064.31	26.98	17000	2400		BETWEEN 17000 AND FL260
			JONZE	064.56	25.20	10000	2200		BETWEEN 11000 AND FL210

ARRIVAL ROUTE DESCRIPTION:

LANDING RWY 05: FROM JONZE ON TRACK 069.26/3.42 TO CROSS DUBBB BETWEEN 10000 AND 12000, THEN ON TRACK 080.13/16.07 TO CROSS CHELE AT 7000 AND AT 210 KIAS, THEN ON HEADING 020.00. EXPECT RADAR VECTORS TO FINAL APPROACH COURSE.

LANDING RWY 18L/C/R: FROM JONZE ON TRACK 053.52/17.00 TO CROSS WHYLE BETWEEN 10000 AND 16000, THEN ON TRACK 053.66/9.83 TO CROSS FREEK BETWEEN 9000 AND 11000 AND AT 250 KIAS, THEN ON TRACK 053.79/4.21 TO DOSBE, THEN ON TRACK 002.82/2.31 TO CROSS AIRE AT 9000 AND AT 210 KIAS, THEN ON TRACK 002.83/12.00 TO CROSS JRDEN AT 6000 AND AT 210 KIAS, THEN ON TRACK 002.83. EXPECT RADAR VECTORS TO FINAL APPROACH COURSE.

LANDING RWY 23: FROM JONZE ON TRACK 053.52/17.00 TO CROSS WHYLE BETWEEN 10000 AND 16000, THEN ON TRACK 053.66/9.83 TO CROSS FREEK BETWEEN 9000 AND 11000 AND AT 250 KIAS, THEN ON TRACK 053.79/4.21 TO DOSBE, THEN ON TRACK 020.57/2.37 TO CROSS RRIKK AT 9000 AND AT 210 KIAS, THEN ON TRACK 023.65/8.00 TO CROSS FLAIR AT 7000, THEN ON TRACK 055.50/4.53 TO CROSS WOOOO AT 7000 AND AT 210 KIAS, THEN ON TRACK 055.50. EXPECT RADAR VECTORS TO FINAL APPROACH COURSE.

LANDING RWY 36L/C/R: FROM JONZE ON TRACK 069.26/3.42 TO CROSS DUBBB BETWEEN 10000 AND 12000, THEN ON TRACK 080.13/16.07 TO CROSS CHELE AT 7000 AND AT 210 KIAS, THEN ON TRACK 090.00. EXPECT RADAR VECTORS TO FINAL APPROACH COURSE.

PROCEDURAL DATA NOTES:

NOTE: RADAR REQUIRED

NOTE: RNAV 1

NOTE: DME/DME/IRU OR GPS REQUIRED

NOTE: TURBOJET AIRCRAFT ONLY

NOTE: EXPECT "DESCEND VIA" CLEARANCE and LANDING DIRECTION ASSIGNMENT (NORTH or SOUTH) BY ARTCC. FOR VERTICAL NAVIGATION PLANNING, LANDING SOUTH, SELECT RWY18R, LANDING NORTH, SELECT RWY36L.

CHART NOTE at CNTLR: TRANSITION FOR KATL DEPARTURES ONLY.

CHART NOTE at JRDEN: LANDING SOUTH RWY 18L/C/R: EXPECT RADAR VECTORS TO FINAL APPROACH COURSE after JRDEN.

CHART NOTE at WOOOO: LANDING SOUTH RWY 23: EXPECT RADAR VECTORS to FINAL APPROACH COURSE after WOOOO.

FEDERAL AVIATION ADMINISTRATION
FLIGHT STANDARDS SERVICE
STANDARD TERMINAL ARRIVAL (STAR)

Bearings, headings, courses, tracks and radials are magnetic. Elevations and altitudes are in feet, MSL. Altitudes are minimum altitudes unless otherwise indicated.
Distances are in nautical miles (NM). Graphic depictions attached.

Arrival Name	Number	STAR Computer Code	Superseded Number	Dated	Effective Date
JONZE (RNAV)	TWO	JONZE.JONZE2	ONE	07/21/2016	
CHART NOTE at CHELE: LANDING NORTH RWY 5, 36L/C/R: EXPECT RADAR VECTORS to FINAL APPROACH COURSE after CHELE.					
CHART NOTE: DESCEND VIA MACH NUMBER UNTIL INTERCEPTING 270 KIAS. MAINTAIN 270 KIAS UNTIL SLOWED BY THE STAR OR ASSIGNED BY ATC.					
NOTE: CLT APPROACH WILL ASSIGN LANDING RUNWAY.					
FIXES AND/OR HOLDING PATTERNS:					
CHART HOLDING AT BANKR: HOLD SW, RT, 038.15 INBOUND, 10 NM LEGS.					
CHART HOLDING AT GRD VORTAC: HOLD SW, RT, 062.00 INBOUND, 10 NM LEGS.					
CHART HOLDING AT JONZE: HOLD SW, LT, 064.56 INBOUND, 10 NM LEGS.					
CHART HOLDING AT KUPPP: HOLD SW, LT, 063.82 INBOUND, 10 NM LEGS.					
COMMUNICATIONS:					
CHARLOTTE APP CON, CHARLOTTE ARR ATIS.					
AIRPORTS SERVED:					
CHARLOTTE/DOUGLAS INTL, CHARLOTTE, NC					
LOST COMMUNICATIONS PROCEDURE:					
REMARKS:					
ADDITIONAL FLIGHT DATA:					
DME/DME ASSESSMENT: SAT (RNP 2.0)					
REFERENCE MAGNETIC VARIATION = KCLT 07W/2000					
CHART: KDCM (CHESTER-CATAWBA REGIONAL AIRPORT).					
CHART NOTE NEAR KDCM: USE CAUTION: PARACHUTE JUMPING, 3.00 NM RADIUS KDCM (CHESTER-CATAWBA REGIONAL AIRPORT), AOB 14,500 MSL.					
FLIGHT INSPECTED BY:					
Name	Organization	Date	Signature		
DEVELOPED BY:					
JAMES A WILLIAMS (NATCA), CHERYL ZIBROWSKI (FAA)	CLT METROPLEX	023/282017	Signature		
Name	Organization	Date	Signature		
APPROVED BY:					
MARLON J. ROBINSON, MANAGER	AJV-5440		Signature		
Name	Organization	Date	Signature		
Apr 18, 2017					

FEDERAL AVIATION ADMINISTRATION
FLIGHT STANDARDS SERVICE
STANDARD TERMINAL ARRIVAL (STAR)

Bearings, headings, courses, tracks and radials are magnetic. Elevations and altitudes are in feet, MSL. Altitudes are minimum altitudes unless otherwise indicated.
Distances are in nautical miles (NM). Graphic depictions attached.

Arrival Name	Number	STAR Computer Code	Superseded Number	Dated	Effective Date
JONZE (RNAV)	TWO	JONZE.JONZE2	ONE	07/21/2016	

CHANGES:

- 1). MOVED DUBBB FROM END OF COMMON ROUTE 0.94 NM EAST ONTO RWY5, 36L/C/R TRANSITION. COMMON ROUTE NOW A SINGLE COMMON POINT.
- 2). MOVED KUPPP 7.02 NM UPTRACK.
- 3). MOVED CAAKE 4.78 NM UPTRACK.
- 4). REMOVED MEA/MOCA VALUES ON COMMON ROUTE and RUNWAY TRANSITIONS.
- 5). CHANGED ALTITUDE at CHELE from AT/ABOVE 7000 to AT 7000.
- 6). CHANGED ALTITUDE at WHYLE from AT/BELOW 16000 to BETWEEN 10000 AND 16000.
- 7). CHANGED ALTITUDE at FREEK from AT/BELOW 11000 to BETWEEN 9000 AND 11000.
- 8). CHANGED ALTITUDE at DUBBB from AT/ABOVE 10000 to BETWEEN 10000 AND 12000.
- 9). MOVED RRIKK .11NM UPTRACK.
- 10). MOVED JRDEN .59NM DOWNTRACK.
- 11). REMOVED DUBBB FROM RWY 23, 18L/C/R TRANSITION.

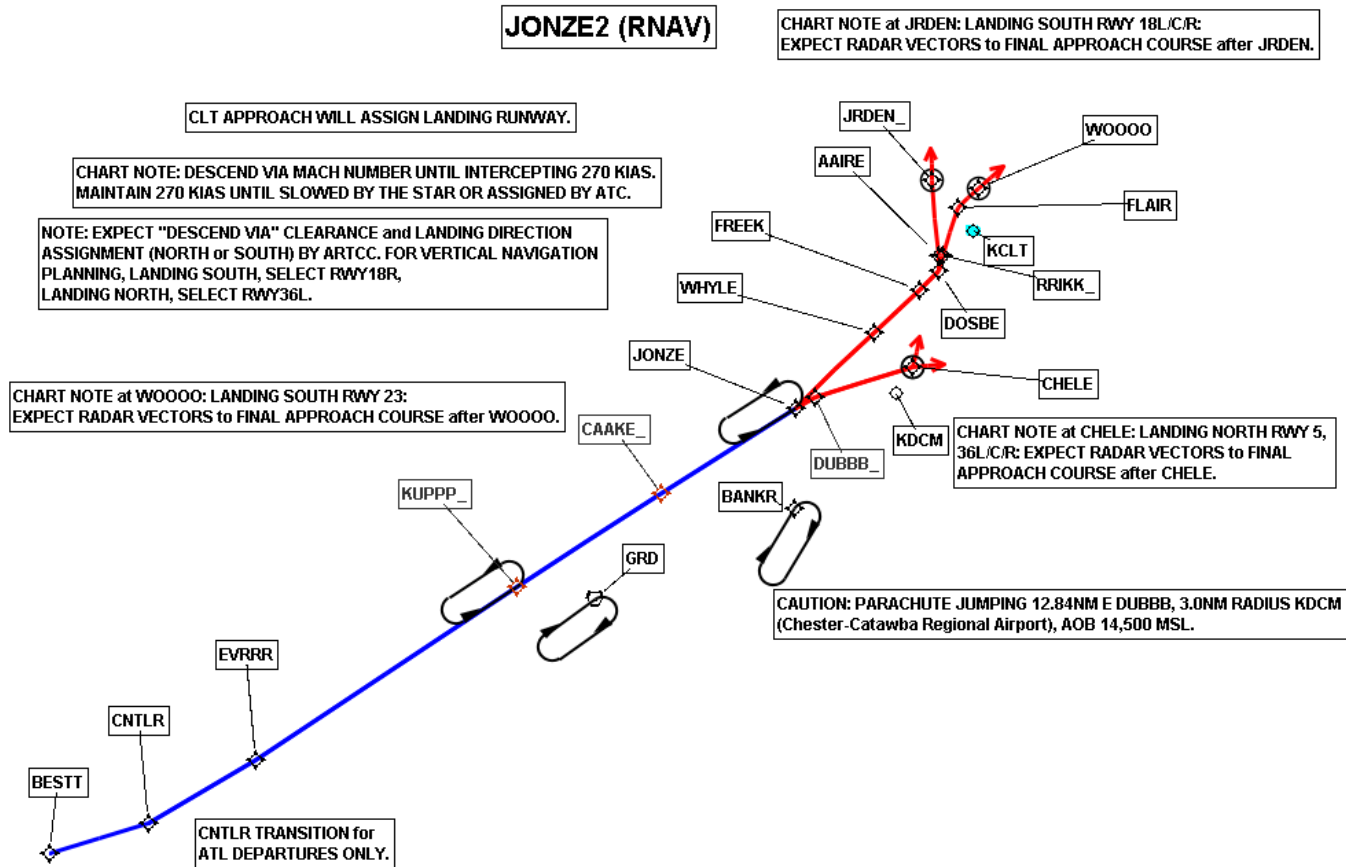
REASONS:

- 1-3). NEW WAYPOINT POSTIONS ALLOWS for MORE EFFICIENT VERTICAL PATHS.
- 4). REQUIRED BY 8260.19G.
- 5). PROVIDES MORE EFFICIENT VERTICAL PROFILE.
- 6-8). BLOCK ALTITDE PROVIDES LOWER DESCENT GRADIENT ON ROUTE PROFILE.
- 9-10). INCREASED LEG LENGTH REQUIRED BY NEW DESCENT GRADIENT CRITERIA.
- 11). WAYPOINT REMOVED FROM TRANSITION AT REQUEST of ATC.

FEDERAL AVIATION ADMINISTRATION
FLIGHT STANDARDS SERVICE
STANDARD TERMINAL ARRIVAL (STAR)

Bearings, headings, courses, tracks and radials are magnetic. Elevations and altitudes are in feet, MSL. Altitudes are minimum altitudes unless otherwise indicated.
Distances are in nautical miles (NM). Graphic depictions attached.

Arrival Name	Number	STAR Computer Code	Superseded Number	Dated	Effective Date
JONZE (RNAV)	TWO	JONZE.JONZE2	ONE	07/21/2016	
Graphic Depiction 1					



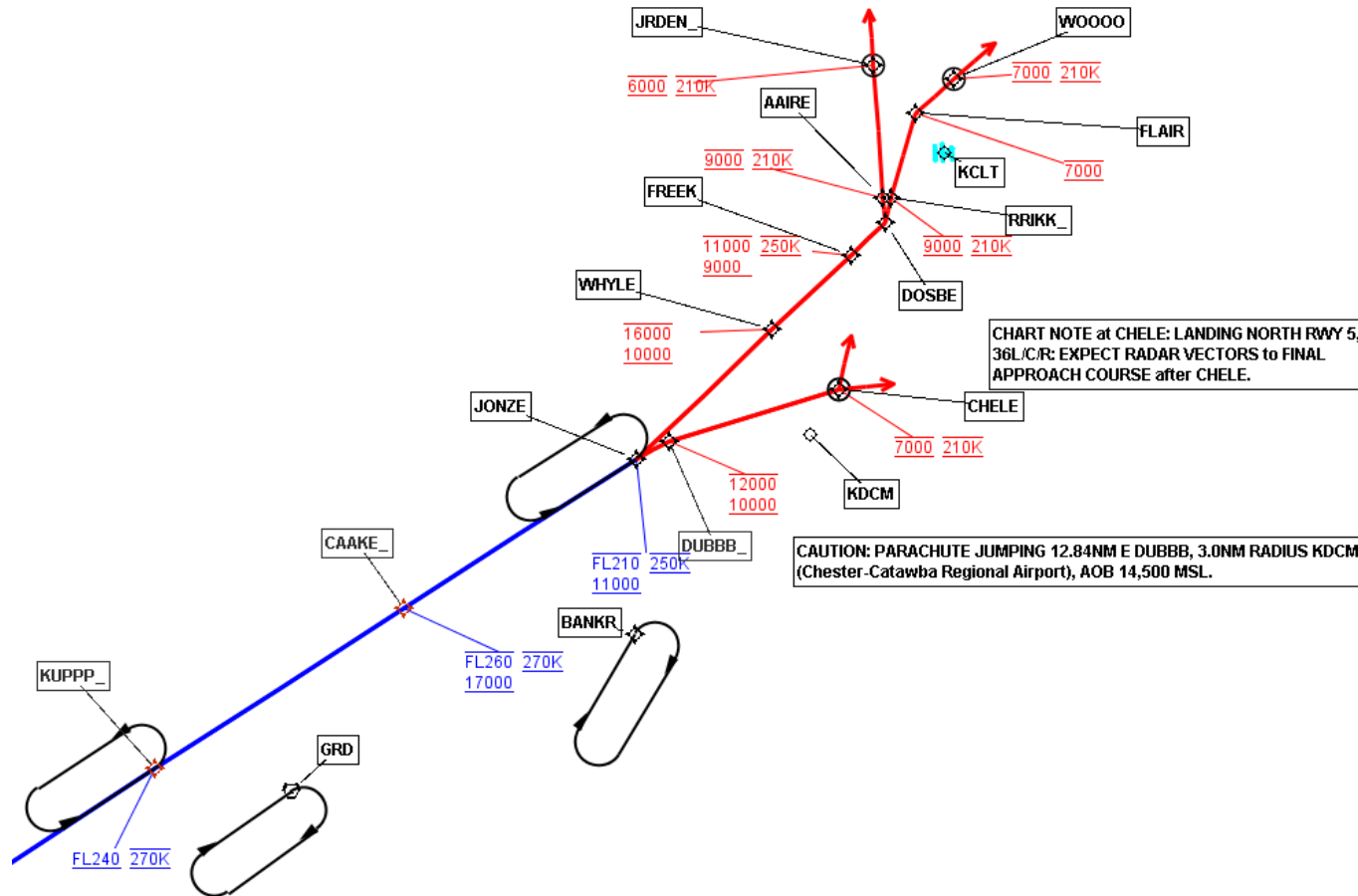
FEDERAL AVIATION ADMINISTRATION
FLIGHT STANDARDS SERVICE
STANDARD TERMINAL ARRIVAL (STAR)

Bearings, headings, courses, tracks and radials are magnetic. Elevations and altitudes are in feet, MSL. Altitudes are minimum altitudes unless otherwise indicated.
Distances are in nautical miles (NM). Graphic depictions attached.

Arrival Name	Number	STAR Computer Code	Superseded Number	Dated	Effective Date
JONZE (RNAV)	TWO	JONZE.JONZE2	ONE	07/21/2016	
Graphic Depiction 2					

JONZE2 (RNAV)

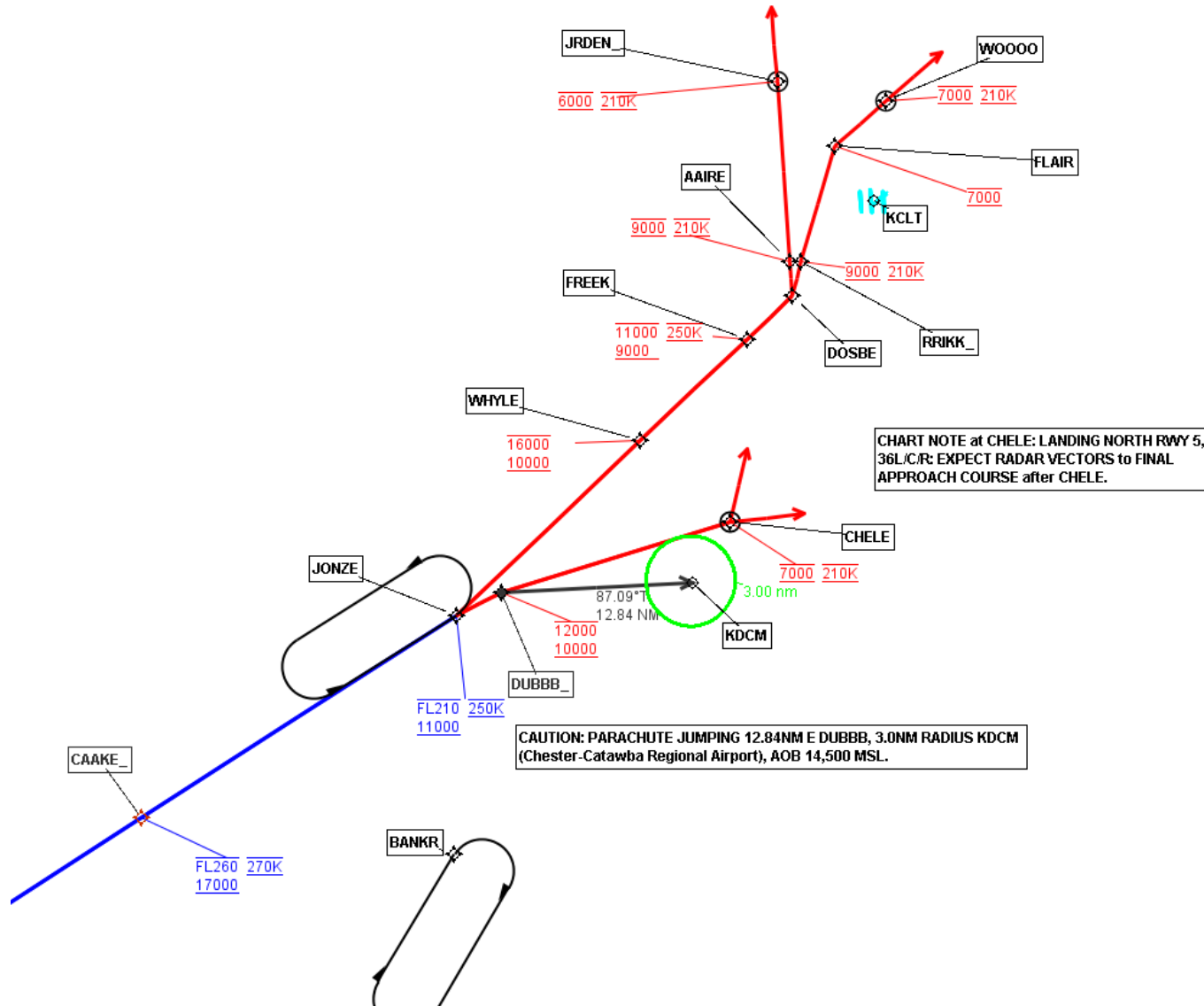
CHART NOTE at JRDEN: LANDING SOUTH RWY 18L/C/R:
EXPECT RADAR VECTORS to FINAL APPROACH COURSE after JRDEN.



FEDERAL AVIATION ADMINISTRATION
FLIGHT STANDARDS SERVICE
STANDARD TERMINAL ARRIVAL (STAR)

Bearings, headings, courses, tracks and radials are magnetic. Elevations and altitudes are in feet, MSL. Altitudes are minimum altitudes unless otherwise indicated.
Distances are in nautical miles (NM). Graphic depictions attached.

Arrival Name	Number	STAR Computer Code	Superseded Number	Dated	Effective Date
JONZE (RNAV)	TWO	JONZE.JONZE2	ONE	07/21/2016	
Graphic Depiction 3					



FEDERAL AVIATION ADMINISTRATION
FLIGHT STANDARDS SERVICE
STAR (DATA RECORD)

Arrival Name	Number	STAR Computer Code	Superseded Number	Dated	Effective Date
JONZE (RNAV)	TWO	JONZE.JONZE2	ONE	07/21/2016	

FIX/NAVAID	LAT/LONG	C	FO/FB	LEG TYPE	TC	DIST (NM)	ALTITUDE	SPEED	REMARKS
En Route Transition									
BESTT	333528.10N / 0835344.03W	Y		IF					BESTT.JONZE2
CNTRLR	334006.16N / 0833452.18W	Y	FB	TF	073.55	16.42			
EVRRRR	335002.23N / 0831425.67W	Y	FB	TF	059.71	19.72			
KUPPPP	341705.51N / 0822416.61W	Y	FB	TF	056.82	49.65	AT/ABOVE FL240	AT 270K	
CAAKE	343138.38N / 0815647.45W	Y	FB	TF	057.31	26.98	17000BFL260	AT 270K	
JONZE	344507.90N / 0813059.05W	Y	FB	TF	057.56	25.20	11000BFL210	AT 250K	
En Route Transition									
CNTRLR	334006.16N / 0833452.18W	Y		IF					CNTRLR.JONZE2
EVRRRR	335002.23N / 0831425.67W	Y	FB	TF	059.71	19.72			
KUPPPP	341705.51N / 0822416.61W	Y	FB	TF	056.82	49.65	AT/ABOVE FL240	AT 270K	
CAAKE	343138.38N / 0815647.45W	Y	FB	TF	057.31	26.98	17000BFL260	AT 270K	
JONZE	344507.90N / 0813059.05W	Y	FB	TF	057.56	25.20	11000BFL210	AT 250K	
Runway Transition									
JONZE	344507.90N / 0813059.05W	Y		IF			11000BFL210	AT 250K	
DUBBB	344643.42N / 0812718.79W	Y	FB	TF	062.26	03.42	10000B12000		
CHELE	345122.26N / 0810837.72W	Y	FO	TF	073.13	16.07	AT 7000	AT 210K	
KCLT:RWY 05				VM	013.00				
Runway Transition									
JONZE	344507.90N / 0813059.05W	Y		IF			11000BFL210	AT 250K	
WHYLE	345649.99N / 0811558.72W	Y	FB	TF	046.52	17.00	10000B16000		
FREEK	350334.97N / 0810716.36W	Y	FB	TF	046.66	09.83	9000B11000	AT 250K	
DOSBE	350628.09N / 0810332.01W	Y	FB	TF	046.79	04.21			
AAIRE	350846.57N / 0810344.33W	Y	FB	TF	355.82	02.31	AT 9000	AT 210K	

FEDERAL AVIATION ADMINISTRATION
FLIGHT STANDARDS SERVICE
STAR (DATA RECORD)

Arrival Name	Number	STAR Computer Code	Superseded Number	Dated	Effective Date
JONZE (RNAV)	TWO	JONZE.JONZE2	ONE	07/21/2016	

FIX/NAVAID	LAT/LONG	C	FO/FB	LEG TYPE	TC	DIST (NM)	ALTITUDE	SPEED	REMARKS
JRDEN	352045.79N / 0810448.30W	Y	FO	TF	355.83	12.00	AT 6000	AT 210K	
KCLT:RWY 18L,RWY 18C,RWY 18R				FM	355.83				RECOMMENDED NAVAID: ILM VORTAC

Runway Transition									
JONZE	344507.90N / 0813059.05W	Y		IF			11000BFL210	AT 250K	
WHYLE	345649.99N / 0811558.72W	Y	FB	TF	046.52	17.00	10000B16000		
FREEK	350334.97N / 0810716.36W	Y	FB	TF	046.66	09.83	9000B11000	AT 250K	
DOSBE	350628.09N / 0810332.01W	Y	FB	TF	046.79	04.21			
RRIKK	350846.52N / 0810251.32W	Y	FB	TF	013.57	02.37	AT 9000	AT 210K	
FLAIR	351627.21N / 0810003.34W	Y	FB	TF	016.65	08.00	AT 7000		
WOOOO	351927.51N / 0805554.62W	Y	FO	TF	048.50	04.53	AT 7000	AT 210K	
KCLT:RWY 23				FM	048.50				RECOMMENDED NAVAID: ILM VORTAC

Runway Transition									
JONZE	344507.90N / 0813059.05W	Y		IF			11000BFL210	AT 250K	
DUBBB	344643.42N / 0812718.79W	Y	FB	TF	062.26	03.42	10000B12000		
CHELE	345122.26N / 0810837.72W	Y	FO	TF	073.13	16.07	AT 7000	AT 210K	
KCLT:RWY 36L,RWY 36C,RWY 36R				FM	083.00				RECOMMENDED NAVAID: ILM VORTAC