

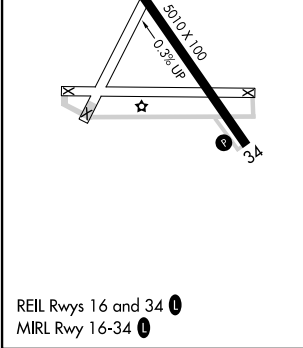
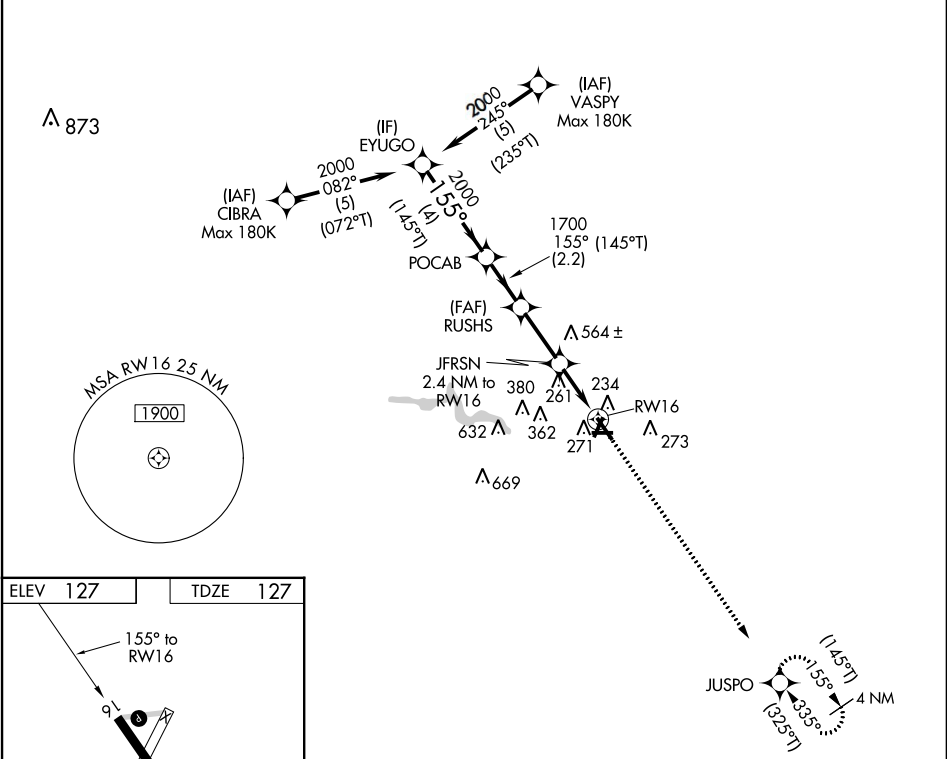
| | | | | | | |
|--|---------------|--------------------------------|---|---------------------------------|--|-------------------------------------|
| Flight Procedure Tracking Form | | Action: FLIGHT CHECK | Task Type: IAP | Date Open: 08/15/2016 | Task #: 2014111430864311003 | Request #: 20141114308643 |
| Procedure: RNAV (GPS) RWY 16 AMDT 2 | | | | Airport ID: KEMV | Airport: EMPORIA-GREENSVILLE RGNL | Reimbursable #: NO |
| City: EMPORIA | ST: VA | GPS #: | Estimated Chart Date: 06/22/2017 | | FICO #: | |
| Fac ID: N/A | | Fac. Type: | | | Specialist: LEO PALMER | |
| Procedure Review | | | | | | |
| | Rec'd | Rel'd | Full Name | Comments | | |
| Lead: | 12/19/2016 | | | | | |
| QA: | | | | 4/6CTabaka | | |
| Liaison: | | | | | | |
| Procedure Comments: | | | ENROUTE-NON | Remark Type: INFORMATION | | |
| CONTACT: JULIE MORGAN (405)954-8568 | | | | | | |

| | | |
|---------|----------|------|
| APP CRS | Rwy ldg | 5010 |
| 155° | TDZE | 127 |
| | Apt Elev | 127 |

RNAV (GPS) RWY 16
EMPORIA-GREENSVILLE RGNL (EMV)

| | | |
|--|------------------------------------|---|
| ▼ Rwy 16 helicopter visibility reduction below ¾ SM NA. DME/DME RNP-0.3 NA. | | MISSED APPROACH: Climb to 3000 direct JUSPO and hold. |
| AWOS-3 124.175 | WASHINGTON CENTER 132.025 269.4 | UNICOM 123.0 (CTAF) 0 |

PROTOTYPE: NOT FOR NAVIGATION



| | | | | | | | |
|----------|-------|--------------|------------------------|--------|------------------|------------------|--------|
| EYUGO | | PO CAB | RUSHS | JFRSN | 2.4 NM to RWY 16 | 1.1 NM to RWY 16 | RWY 16 |
| 2000 | | 1800 | 1700 | 920 | | | |
| (145°T) | | 3.00° TCH 31 | | | | | |
| 4 NM | | 2.2 NM | 2.4 NM | 1.3 NM | 1.1 NM | | |
| CATEGORY | A | B | C | D | | | |
| LNAV MDA | 520-1 | 393 (400-1) | NA | | | | |
| CIRCLING | 580-1 | 453 (500-1) | 680-1½ 553 (600-1½) | | | | |

EMPORIA, VIRGINIA

AL-5534 (FAA)

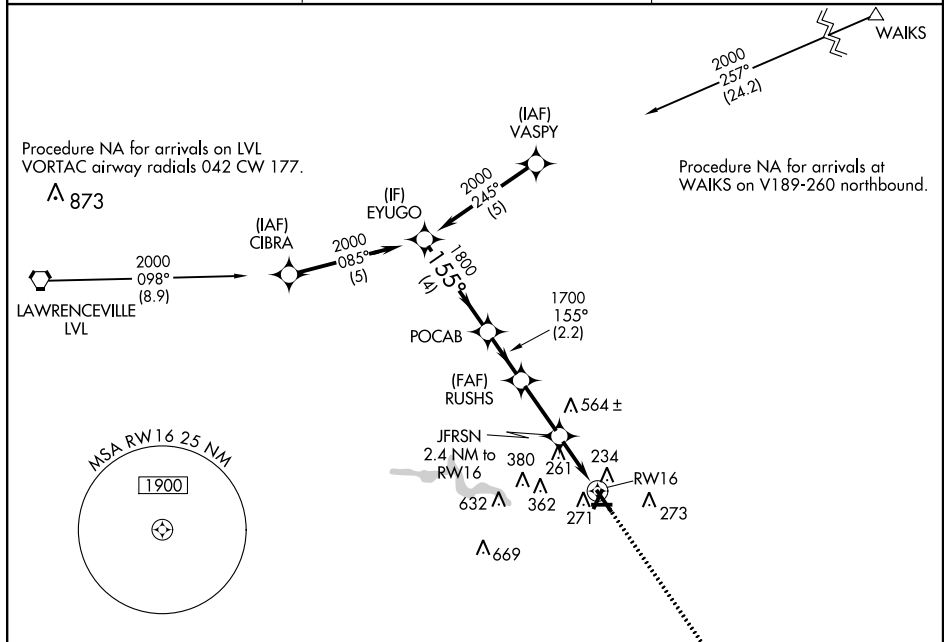
14093

| | | |
|-------------|----------|-------------|
| APP CRS | Rwy Idg | 5010 |
| 155° | TDZE | 126 |
| | Apt Elev | 126 |

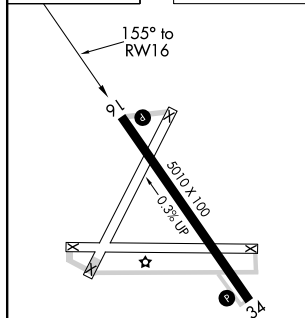
RNAV (GPS) RWY 16 EMPORIA-GREENSVILLE RGNL (EMV)

| | |
|---|---|
| <p>⚠ DME/DME RNP-0.3 NA. When local altimeter setting not received, use Ahsokie altimeter setting and increase all MDA 80 feet. Helicopter visibility reduction below ¾ SM NA.</p> | <p>MISSED APPROACH: Climb to 3000 direct XETIY and hold, continue climb-in-hold to 3000.</p> |
|---|---|

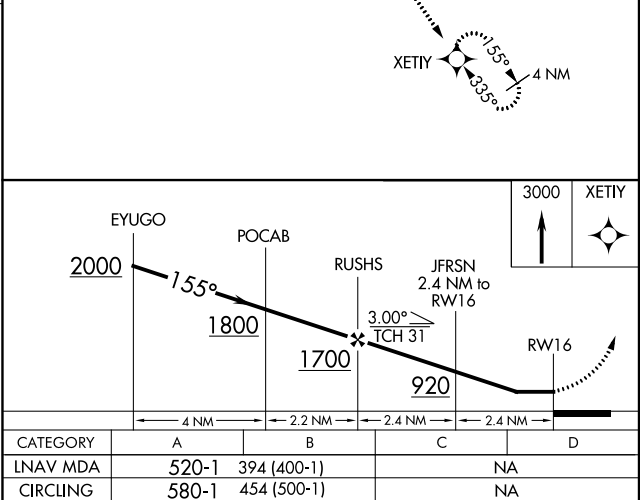
| | | |
|----------------------------------|---|---|
| <p>AWOS-3 124.175</p> | <p>WASHINGTON CENTER 132.025 269.4</p> | <p>UNICOM 123.0 (CTAF) 0</p> |
|----------------------------------|---|---|



| | | | |
|------|------------|------|------------|
| ELEV | 126 | TDZE | 126 |
|------|------------|------|------------|



| | |
|--------------------|----------|
| REIL Rwy 16 and 34 | 0 |
| MIRL Rwy 16-34 | 0 |



EMPORIA, VIRGINIA

Amtd 1A 03APR14

36°41'N - 77°29'W

EMPORIA-GREENSVILLE RGNL (EMV)
RNAV (GPS) RWY 16

NE-3, 05 JAN 2017 to 02 FEB 2017

NE-3, 05 JAN 2017 to 02 FEB 2017

