


Flight Procedure Tracking Form		Action: AMENDMENT	Task Type: IAP	Date Open: 02/20/2015	Task #: 2014111430864310001	Request #: 20141114308643
Procedure: VOR RWY 2 AMDT 1			Airport ID: KIXA	Airport: HALIFAX-NORTHAMPTON RGNL		Reimbursable #: NO
City: ROANOKE RAPIDS	ST: NC	GPS #:	Estimated Chart Date: 06/22/2017		FICO #:	
Fac ID: TYI		Fac. Type: VORTAC			Specialist: LEO PALMER	
Procedure Review						
	Rec'd	Rel'd	Full Name	Comments		
Lead:	12/15/2016					
QA:		3/4	CLARK			
Liaison:						
Procedure Comments:			ENROUTE-NON	Remark Type: INFORMATION		
CONTACT: DANNY OLSON (405)954-3255						



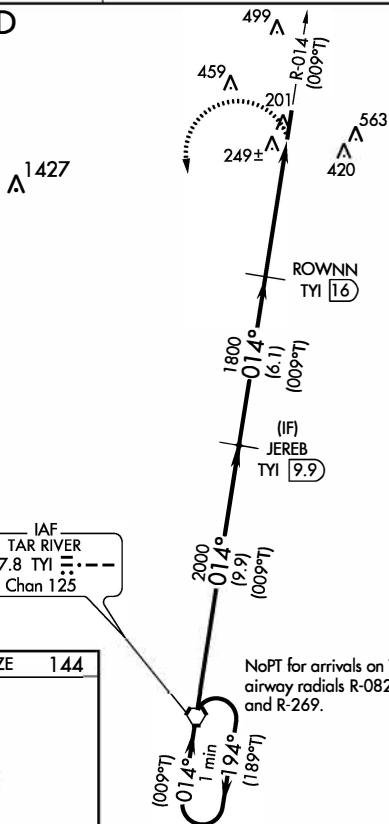
Rwy Idg	5500
TDZE	144
Apt Elev	145

HALIFAX-NORTHAMPTON RGNL (IXA)

- MISSED APPROACH:** Climbing left turn to 2000 direct TYI VORTAC and hold.

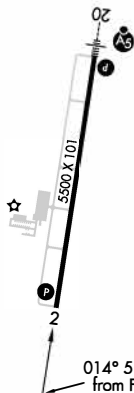
UNICOM
123.075 (CTAF) 

DME REQUIRED

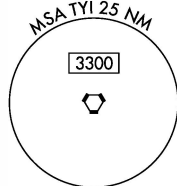




PROTOTYPE-NOT
FOR NAVIGATION

HIRL Rwy 2-20 **L**
REIL Rwy 2 **L**



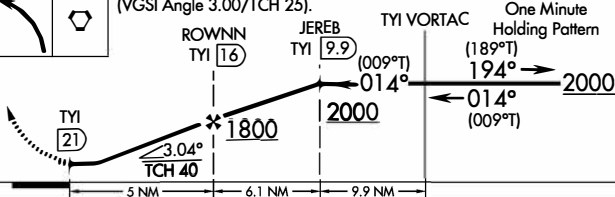
NoPT for arrivals on TYI VORTAC
airway radials R-082, R-096, R-196
and R-269.



2000	TYI
	

VGSI and descent angles not coincident
(VGSI Angle 3.00/TCH 25).

TYI VORTAC One Minute
Holding Pattern



CATEGORY	A	B	C	D
S-2	780-1 636 (700-1)		780-1¾ 636 (700-1¾)	
C CIRCLING	780-1 635 (700-1)		780-1¾ 635 (700-1¾)	860-2¼ 715 (800-2¼)

OLD TPP

ROANOKE RAPIDS, NORTH CAROLINA

AL-10369 (FAA)

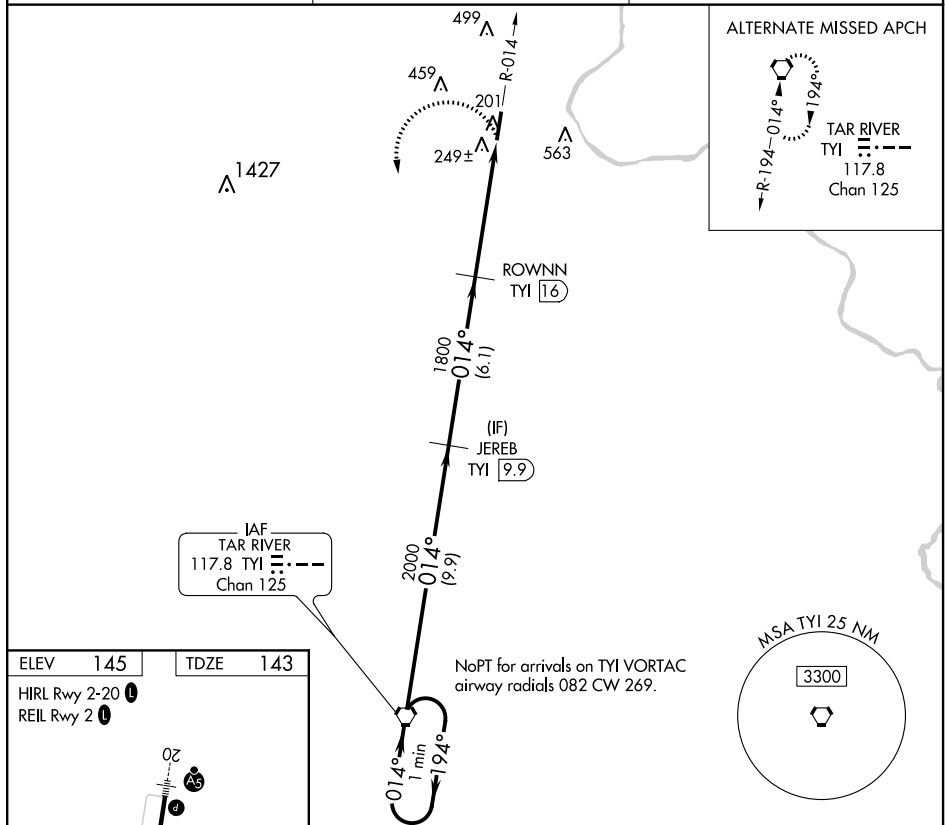
16259

APP CRS	Rwy Idg	5500
014°	TDZE	143
	Apt Elev	145

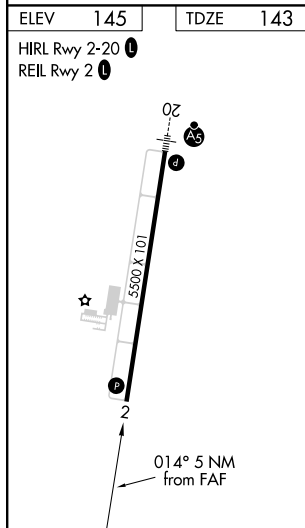
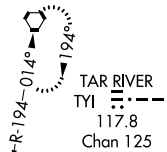
VOR/DME RWY 2 HALIFAX-NORTHAMPTON RGNL (IXA)

<p>⚠ Circling NA east of Rwy 2-20. When local altimeter setting not received, use Ahsokie altimeter setting and increase all MDA 80 feet, increase S-2 and Circling Cats C/D visibility ¼ mile. Helicopter visibility reduction below ¾ SM NA.</p>	<p>MISSED APPROACH: Climbing left turn to 2000 direct TYI VORTAC and hold.</p>
-----------------------------------------------------------------------------------------------------------------------------------------------------------------------------------------------------------------------------------------------------------	---------------------------------------------------------------------------------------

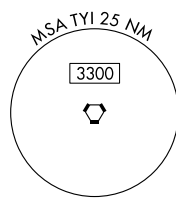
AWOS-3PT 119.975	WASHINGTON CENTER 132.02 290.425	UNICOM 123.075 (CTAF)
----------------------------	--------------------------------------------	---------------------------------

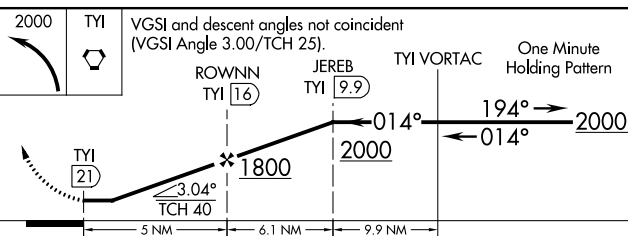


ALTERNATE MISSED APCH



NoPT for arrivals on TYI VORTAC
airway radials 082 CW 269.



 <p>2000 TYI</p> <p>VGSI and descent angles not coincident (VGSI Angle 3.00/TCH 25).</p> <p>ROWNN TYI 16</p> <p>JEREB TYI 9.9</p> <p>TYI VORTAC</p> <p>One Minute Holding Pattern</p> <p>014°</p> <p>194°</p> <p>2000</p> <p>2000</p> <p>5 NM</p> <p>6.1 NM</p> <p>9.9 NM</p> <p>3.04°</p> <p>TCH 40</p>				
CATEGORY	A	B	C	D
S-2	780-1 637 (700-1)	780-1¼ 637 (700-1¼)	780-1¾ 637 (700-1¾)	780-2 637 (700-2)
CIRCLING	780-1 635 (700-1)	780-1¼ 635 (700-1¼)	780-1¾ 635 (700-1¾)	780-2 635 (700-2)

ROANOKE RAPIDS, NORTH CAROLINA
Orig-C 28APR16

36°20'N-77°38'W

HALIFAX-NORTHAMPTON RGNL (IXA) VOR/DME RWY 2

SE-2, 05 JAN 2017 to 02 FEB 2017

SE-2, 05 JAN 2017 to 02 FEB 2017

NM 7 14 21 28 35 42 49
FT 42000 84000 126000 168000 210000 252000 294000

fpoljp | kixa vor2 (PROD) | 11 Jan 2017 10:32:48 | 1" = 41666.7 feet (MAP)

KIXA
HALIFAX-NORTHAMPTON RGNL
ROANOKE RAPIDS, NC
VOR RWY 2, AMDT 1
ALL SEMENTS
1:500,000

#8
353 TOWER

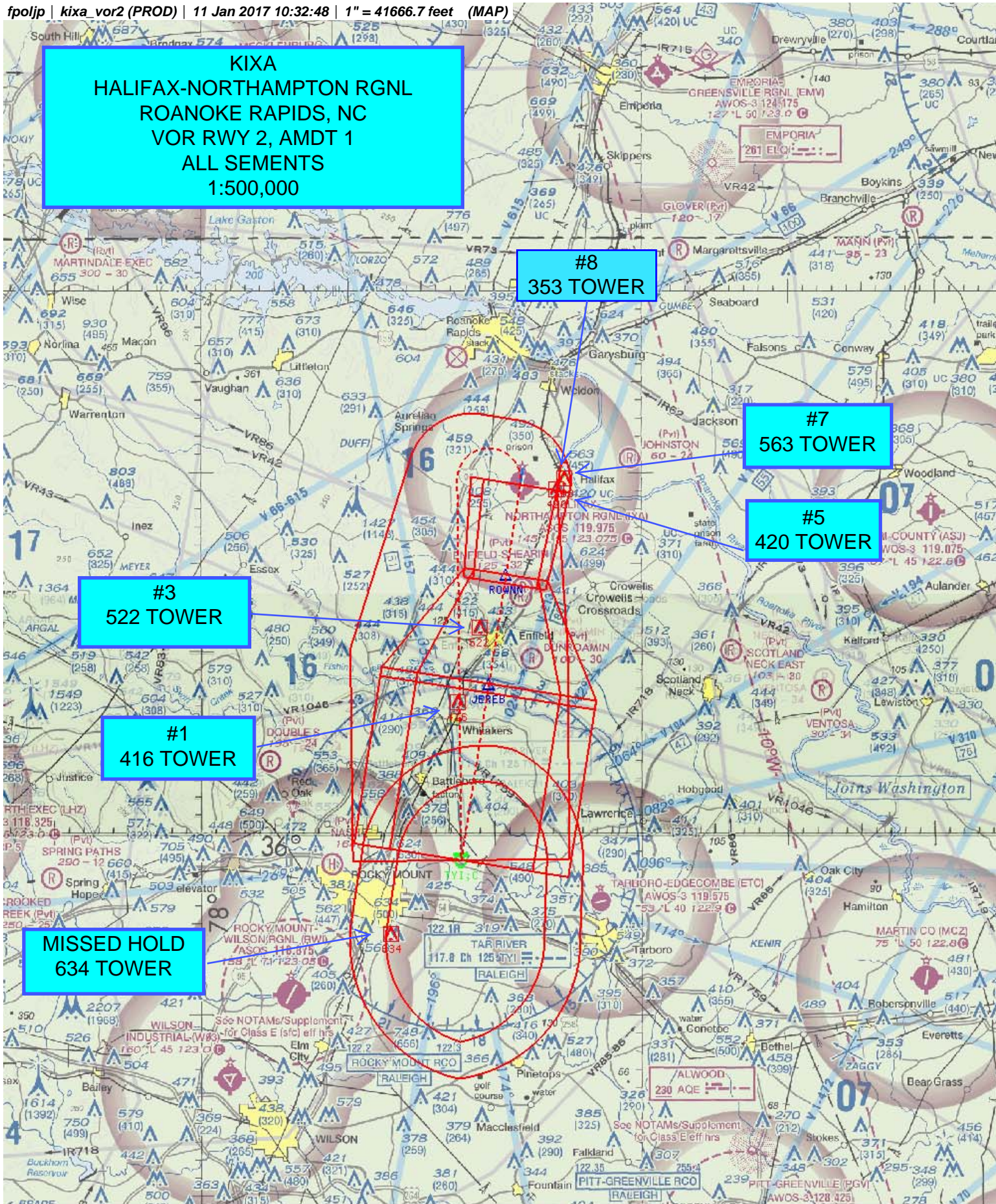
#7
563 TOWER

#5
420 TOWER

#3
522 TOWER

#1
416 TOWER

MISSED HOLD
634 TOWER



NM 1 2 3 4 5 6 7 8 9 10
FT 8000 16000 24000 32000 40000 48000 56000 64000
fpoljp | kixa_vor2 (PROD) | 11 Jan 2017 10:48:10 | 1" = 8350.0 feet (MAP)

