

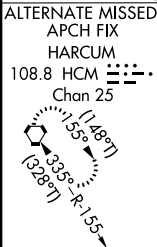
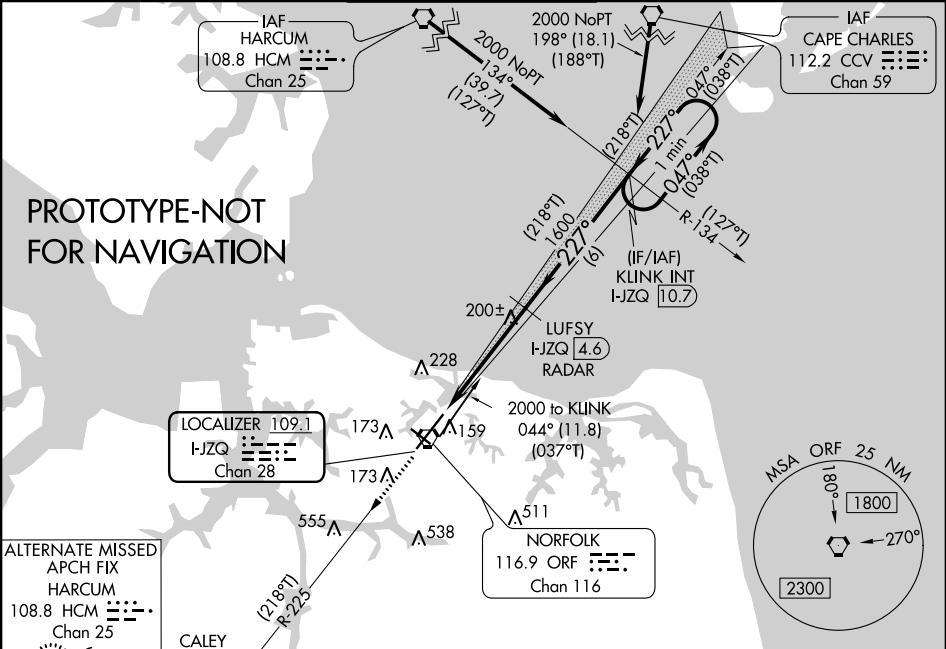
<b>Flight Procedure Tracking Form</b>		<b>Action:</b> FLIGHT CHECK	<b>Task Type:</b> IAP	<b>Date Open:</b> 02/20/2015	<b>Task #:</b> 2014111430864309001	<b>Request #:</b> 20141114308643
<b>Procedure:</b> APPROACH ILS OR LOC RWY 23 AMDT 8			<b>Airport ID:</b> KORF	<b>Airport:</b> NORFOLK INTL		<b>Reimbursable #:</b> NO
<b>City:</b> NORFOLK	<b>ST:</b> VA	<b>GPS #:</b>	<b>Estimated Chart Date:</b> 10/12/2017		<b>FICO #:</b>	
<b>Fac ID:</b> N/A		<b>Fac. Type:</b>			<b>Specialist:</b> ROBERT GRIM	
<b>Procedure Review</b>						
	<b>Rec'd</b>	<b>Rel'd</b>	<b>Full Name</b>	<b>Comments</b>		
<b>Lead:</b>	04/20/2017					
<b>QA:</b>				<div style="border: 1px solid green; padding: 2px; display: inline-block;"> <b>APPROVED</b>  <small>By Steven M Barnett at 7:31 am, Jul 14, 2017</small> </div>		
<b>Liaison:</b>						
<b>Procedure Comments:</b>			ENROUTE-NON <b>Remark Type:</b> INFORMATION			
CONTACT INFO: DON LANIER MANAGER, AJV-5431, 405.954.8242						

LOC/DME I-JZQ <b>109.1</b> Chan <b>28</b>	APP CRS <b>227°</b>	Rwy Idg TDZE Apt Elev <b>8995</b> <b>26</b> <b>27</b>
---	------------------------	--

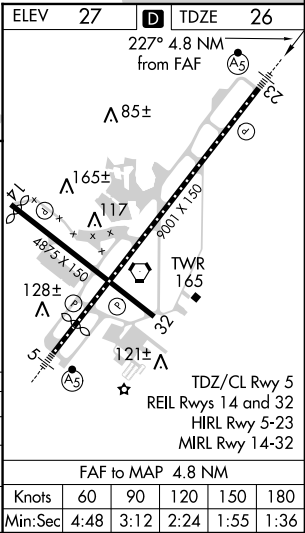
ILS or LOC RWY 23  
NORFOLK INTL (ORF)

	MALSR 	MISSED APPROACH: Climb to 2000 on ORF VORTAC R-225 to CALEY/ORF 11.5 DME/RADAR and hold.
---	--	--

ATIS <b>127.15</b>	NORFOLK APP CON <b>118.9 353.7</b>	NORFOLK TOWER <b>120.8 257.8</b>	GND CON <b>121.9</b>	CLNC DEL <b>118.5</b>
-----------------------	---------------------------------------	-------------------------------------	-------------------------	--------------------------



2000 ↑	ORF R-225	CALEY ORF 11.5	LUFSS I-JZQ 4.6 RADAR	KLUNK INT I-JZQ 10.7	One Minute Holding Pattern
*LOC only	I-JZQ DME ANTENNA	*I-JZQ 1.1	1600	(218°T) 227°	(038°T) 047°
	I-JZQ 0.2			227° (218°T)	2000
	1.2 NM	3.6 NM	6 NM		GS 3.00° TCH 55
CATEGORY	A	B	C	D	
S-ILS 23	226-1/2	200 (200-1/2)			
S-LOC 23	460-1/2	434 (500-1/2)	460-3/4	434 (500-3/4)	
CIRCLING	480-1 453 (500-1)	540-1 513 (600-1)	540-1 1/2 513 (600-1 1/2)	900-2 3/4 873 (900-2 3/4)	



# EXISTING

NORFOLK, VIRGINIA

AL-291 (FAA)

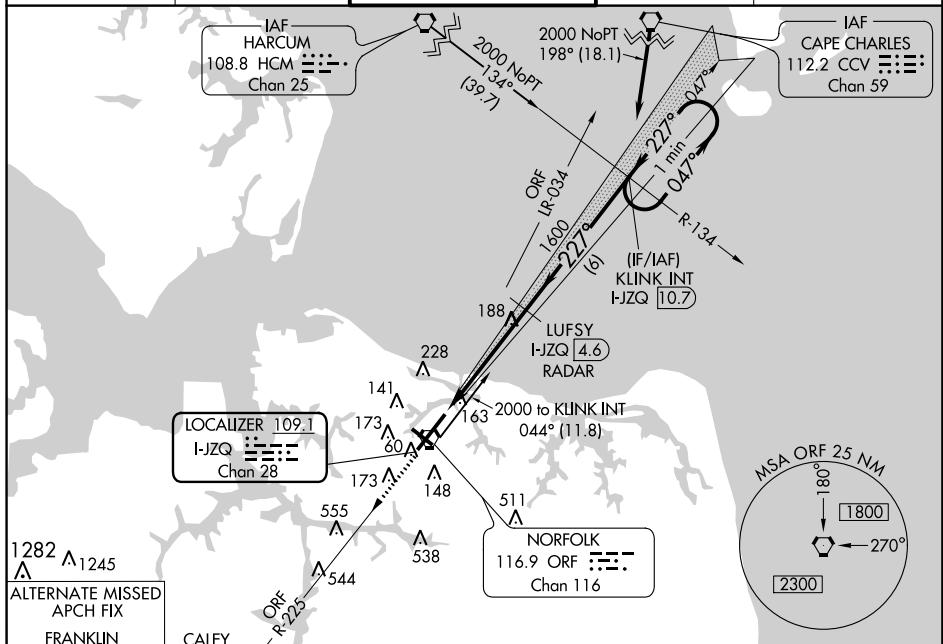
15232

LOC/DME I-JZQ <b>109.1</b> Chan <b>28</b>	APP CRS <b>227°</b>	Rwy Idg TDZE Apt Elev <b>9001</b> <b>26</b> <b>27</b>
---	------------------------	--

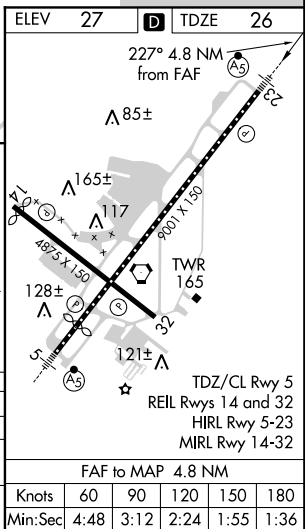
**ILS or LOC RWY 23**  
NORFOLK INTL (ORF)

<p>Visibility reduction by helicopters NA. For inoperative MALSR increase S-LOC 23 Cat A and B visibility to 1 mile.</p>	<p>MALSR</p>	<p>MISSED APPROACH: Climb to 2000 on ORF VORTAC R-225 to CALEY/ORF 11.5 DME/RADAR and hold.</p>
--	--------------	---

ATIS <b>127.15</b>	NORFOLK APP CON <b>118.9 353.7</b>	NORFOLK TOWER <b>120.8 257.8</b>	GND CON <b>121.9</b>	CLNC DEL <b>118.5</b>
-----------------------	---------------------------------------	-------------------------------------	-------------------------	--------------------------



2000	ORF R-225	CALEY ORF 11.5	LUFSY I-JZQ 4.6 RADAR	KLINK INT I-JZQ 10.7	One Minute Holding Pattern
*LOC only	I-JZQ DME ANTENNA	I-JZQ 1	1600	227°	047°
	1.2 NM	3.6 NM	6 NM		
CATEGORY	A	B	C	D	
S-ILS 23		226-1/2	200 (200-1/2)		
S-LOC 23		440-3/4	414 (500-3/4)		
CIRCLING	480-1	453 (500-1)	540-1 1/2 513 (600-1 1/2)	580-2 553 (600-2)	



NORFOLK, VIRGINIA  
Amdt 7A 25JUN15

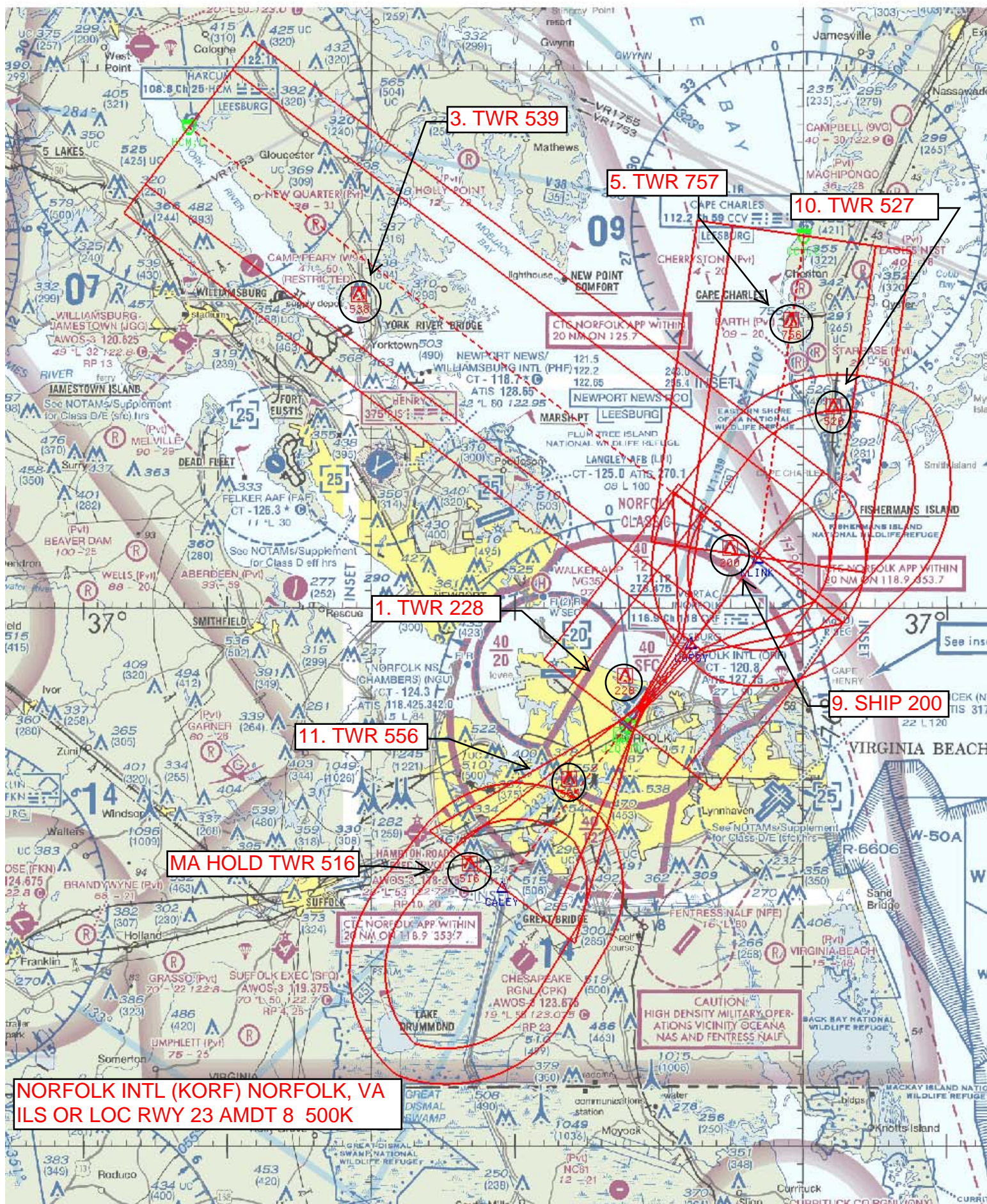
36°54'N - 76°12'W

**ILS or LOC RWY 23**  
NORFOLK INTL (ORF)

NE-3, 27 APR 2017 to 25 MAY 2017

NE-3, 27 APR 2017 to 25 MAY 2017







NM  
FT  
42000 84000 126000 168000 210000 252000 294000  
7 14 21 28 35 42 49  
fporeg | orf\_altma (PROD) | 3 May 2017 07:05:21 | 1" = 41666.7 feet (MAP)



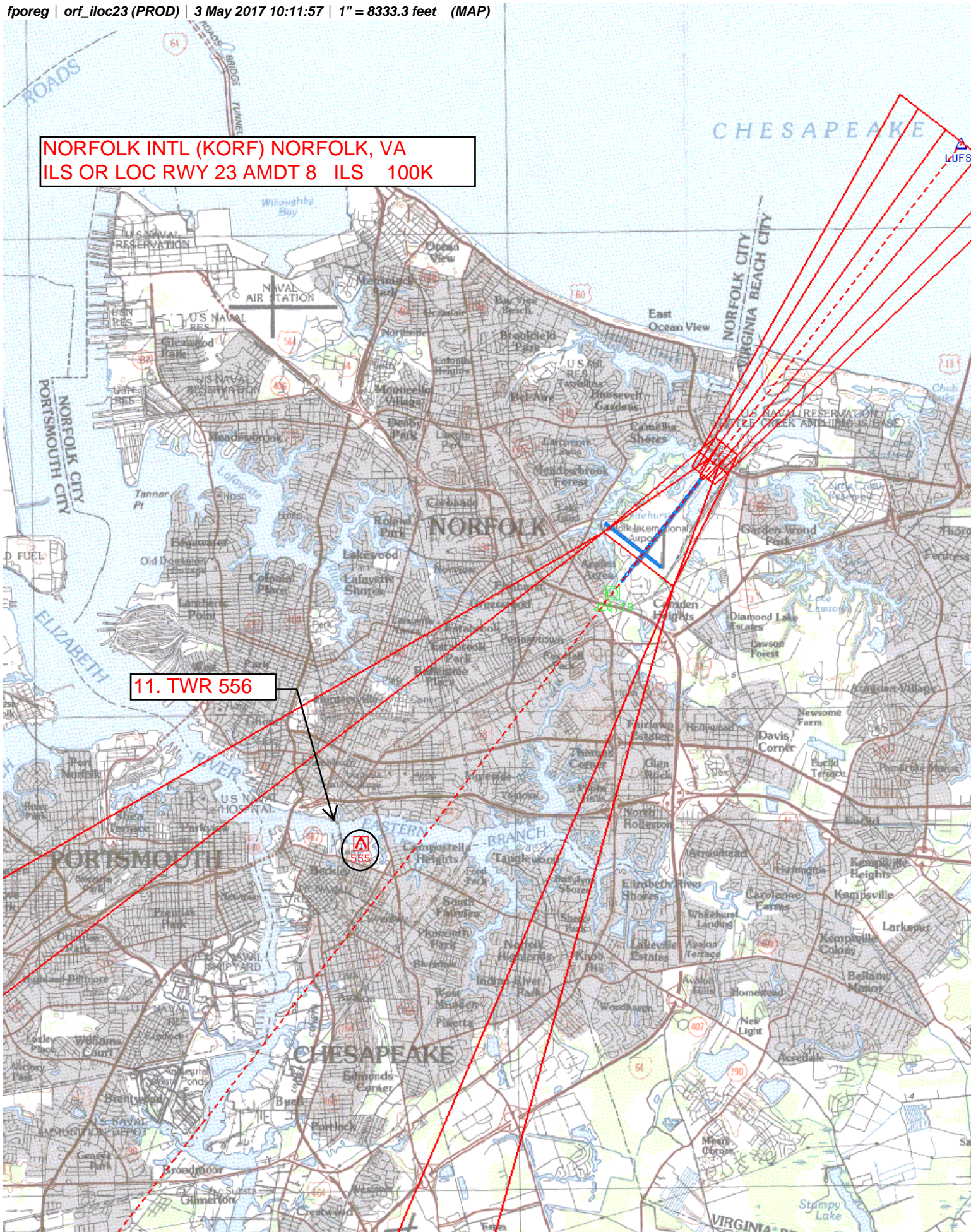


NM 1 2 3 4 5 6 7 8 9 10  
FT 8000 16000 24000 32000 40000 48000 56000 64000

fporeg | orf\_iloc23 (PROD) | 3 May 2017 10:11:57 | 1" = 8333.3 feet (MAP)

NORFOLK INTL (KORF) NORFOLK, VA  
ILS OR LOC RWY 23 AMDT 8 ILS 100K

11. TWR 556





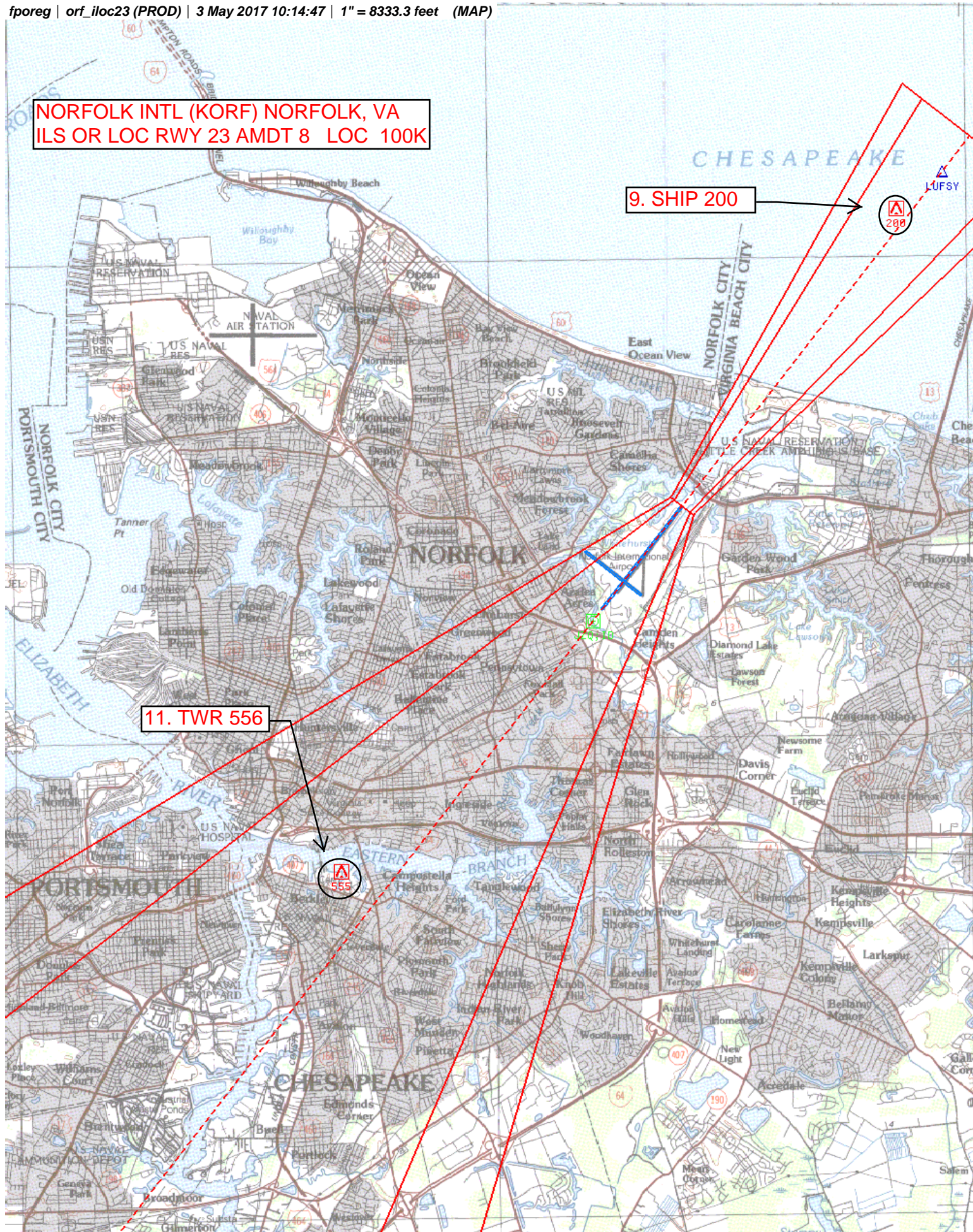
NM 1 2 3 4 5 6 7 8 9 10  
FT 8000 16000 24000 32000 40000 48000 56000 64000

fporeg | orf\_iloc23 (PROD) | 3 May 2017 10:14:47 | 1" = 8333.3 feet (MAP)

NORFOLK INTL (KORF) NORFOLK, VA  
ILS OR LOC RWY 23 AMDT 8 LOC 100K

9. SHIP 200

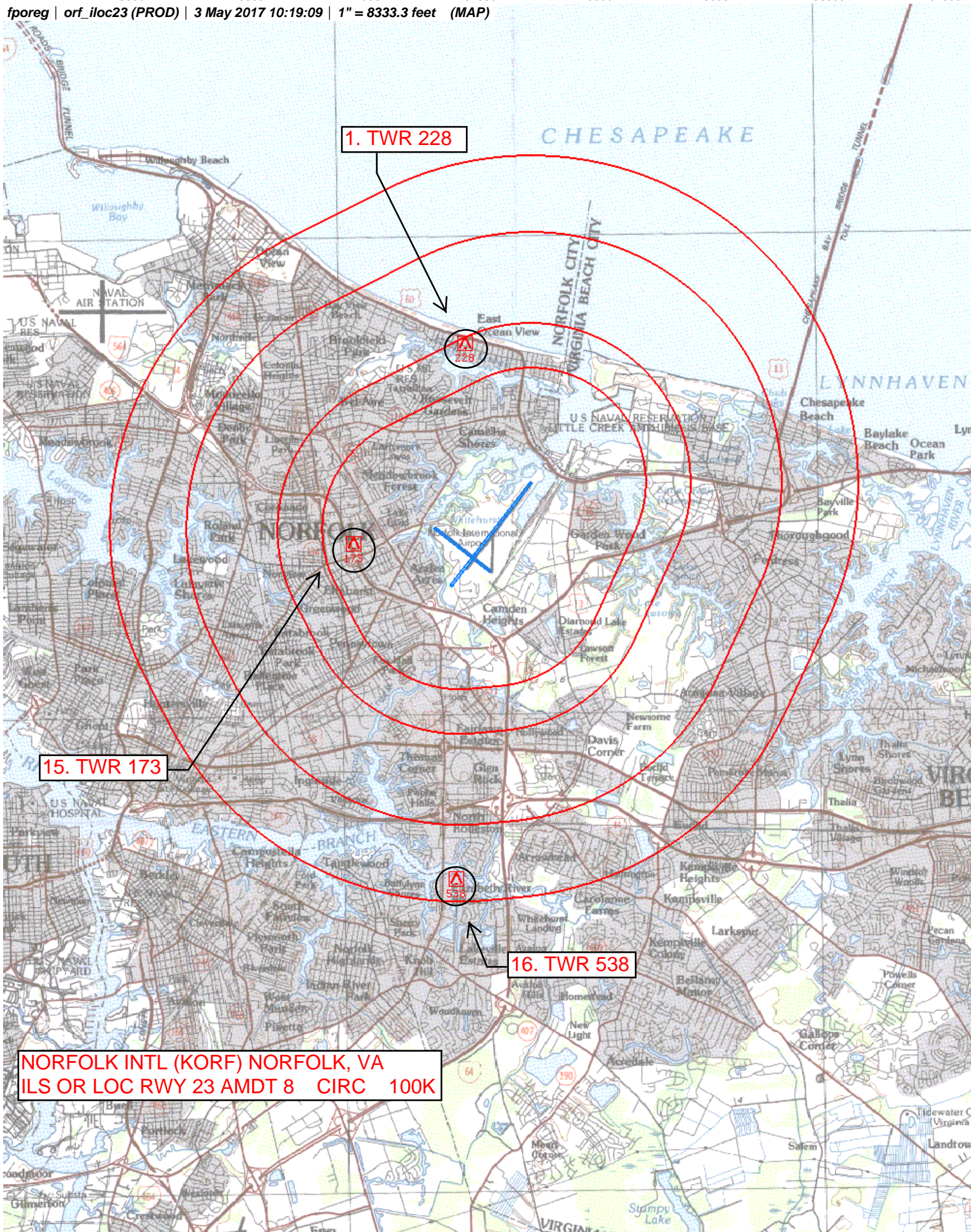
11. TWR 556





NM 1 2 3 4 5 6 7 8 9 10  
FT 8000 16000 24000 32000 40000 48000 56000 64000

fporeg | orf\_iloc23 (PROD) | 3 May 2017 10:19:09 | 1" = 8333.3 feet (MAP)



NORFOLK INTL (KORF) NORFOLK, VA  
ILS OR LOC RWY 23 AMDT 8 CIRC 100K