

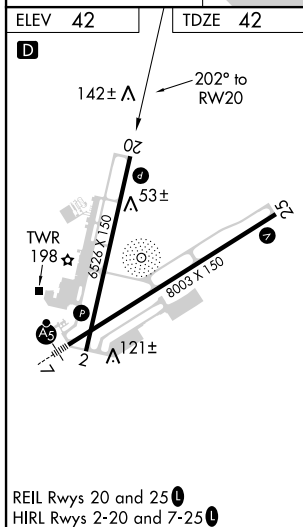
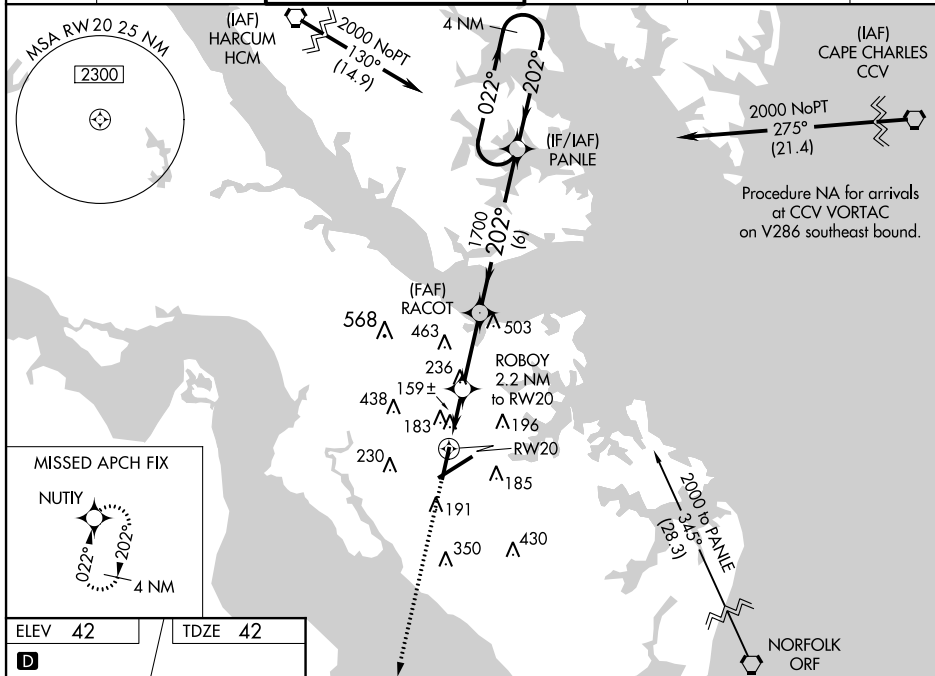
Flight Procedure Tracking Form		Action: AMENDMENT	Task Type: IAP	Date Open: 09/02/2016	Task #: 2014111430864307008	Request #: 20141114308643
Procedure: RNAV (GPS) RWY 20 AMDT 2B				Airport ID: KPHF	Airport: NEWPORT NEWS/WILLIAMSBURG INTL	Reimbursable #: NO
City: NEWPORT NEWS	ST: VA	GPS #:	Estimated Chart Date: 03/02/2017		FICO #:	
Fac ID: N/A		Fac. Type:			Specialist: DANIEL OLSON	
Procedure Review						
	Rec'd	Rel'd	Full Name	Comments		
Lead:	09/02/2016					
QA:			J ZEDER 11/18/2016			
Liaison:						
Procedure Comments:			ENROUTE-NON	Remark Type: INFORMATION		
ABBREVIATED AMENDMENT - APPLIED NEW CIRCLNG CRITERIA, REVISED NOTES AND SOME VIS VALUES . CONTACT: STEVE VARGAS AJV-5421/JULIE MORGAN AJV-5421, 405.954.0695, 8568.						

RNAV (GPS) RWY 20

NEWPORT NEWS/WILLIAMSBURG INTL (PHF)

MISSED APPROACH:
Climb to 2300 direct
NUTTY and hold.

ATIS 128.65	NORFOLK APP CON 125.7	NEWPORT NEWS TOWER ★ 118.7(CTAF) 0 257.9	GND CON 121.9 348.6	CLNC DEL 121.65 225.4	UNICOM 122.95
-----------------------	---------------------------------	--	-------------------------------	---------------------------------	-------------------------



2300 ↑

NUTTY

* LNAV only

ROBOY to 2.2 NM to RW20

RW20

RACOT 1700

202°

022°

2000

4 NM Holding Pattern

PANLE

GP 3.00° TCH 42

2.2 NM

2.8 NM

6 NM

780*

1700

Airport ID:	KPHF	Form 9			
Apt Name:	NEWPORT NEWS/WILLIAMSBURG INTL	No	SEGMENT	OBSTRUCTION	ELEV
City:	NEWPORT NEWS	13	CIRCLING CAT A	TOWER	209
State:	VA	14	CIRCLING CAT B	TOWER	230
Proc ID:	RNAV (GPS) RWY 20	18	CIRCLING CAT C	TOWER	438
Amdt #:	2B	19	CIRCLING CAT D	TOWER	463
Scale:	1:100,000				

