

Flight Procedure Tracking Form		Action: FLIGHT CHECK	Task Type: SID	Date Open: 02/20/2015	Task #: 2014111430864303001	Request #: 20141114308643
Procedure: SID RALEIGH EIGHT RALEIGH-DURHAM NC KRDU			Airport ID: KRDU	Airport: RALEIGH-DURHAM INTL	Reimbursable #: NO	
City: RALEIGH/DURHAM	ST: NC	GPS #:	Estimated Chart Date: 06/22/2017		FICO #:	
Fac ID: N/A		Fac. Type:		Specialist: IVAN BLANCO		
Procedure Review						
	Rec'd	Rel'd	Full Name	Comments		
Lead:	12/14/2016	02/22/2017	JACOB POWERS			
QA:	02/22/2017		Wilson 3/14/2017			
Liaison:						
Procedure Comments:			ENROUTE	Remark Type: INFORMATION		
AMDT TO REMOVE FKN VORTAC AND FOR ARPT MAG VAR ROTATION. PENDING DATA USED FOR KRDU. CONTACT JACOB POWERS SUB TEAM MGR: 405.954.8702 PAT MULQUEEN MANAGER: 405.954.4073						


QUALITY
28
CHECKED

(RDU8.RDU) FIG
RALEIGH EIGHT DEPARTURE


RALEIGH-DURHAM INTL (RDU)
RALEIGH/DURHAM, NORTH CAROLINA


ATIS
123.8
CLNC DEL
120.1
CPDLC

NORTH DEPARTURE	132.35	256.9
-----------------	--------	-------


FLAT ROCK
113.3 FAK 
Chan 80
N37°31.71'-W77°49.69'
L-36, H-10-12

TOP ALTITUDE:
(JETS) 7000/
(PROPS) 2000

DANVILLE
113.1 DAN 
N36°34.13'
W79°20.20'
L-26-36


SOUTH BOSTON
110.4 SBV 
Chan 41
N36°40.50'-W79°00.87'
I-26-36 H-9-12

SOUTH DEPARTURE
125.3 353.675

GREENSBORO
116.2 GSO 
Chan 109
N36°02.74'-W79°58.58'
L-25-36, H-9-12

PROTOTYPE-NOT
FOR NAVIGATION


SPECIAL INSTRUCTIONS: For appropriate departure control frequency, use frequency depicted within sector for your route of flight after RDU.


LIBERTY
113.0 LIB 
Chan 77
N35°48.70'
W79°36.76'
L-25-36, H-9-12

TAR RIVER
117.8 TYI $\frac{3}{4}$ · --
Chan 125
N35°58.60'-W77°42.22'
I-35-36, H-9-12


1900

RALEIGH/DURHAM
117.2 RDU
Chan 119

SANDHILLS
111.8 SDZ 
Chan 55
N35°12.93'
W79°35.28'
L-25-35-36, H-9-12

FAYETTEVILLE
108.8 FAY 
Chan 25
N34°59.13'-W78°52.50'
1-35-36

ROZBO
N34°57.40'-W78°37.62'

WILMINGTON
117.0 ILM 
Chan 117
N34°21.10'-W77°52.46'
I-23-35 H-9-12

TAKE-OFF MINIMUMS:

Rwys 5L, 5R, 23L, 23R, Standard	
Rwy 14 300-1 or standard with a minimum	
climb of 310 feet per NM to 700.	NC
Rwy 32: 300-1.	NC

NOTE: RADAR Required.

NOTE: ROZBO departures expect vectors to RDU R-176.

NOTE: Chart not to scale.

(NARRATIVE ON FOLLOWING PAGE)

RALEIGH EIGHT DEPARTURE (RDU8.RDU) FIG

RALEIGH/DURHAM, NORTH CAROLINA
RALEIGH-DURHAM INTL (RDU)

RALEIGH EIGHT DEPARTURE



DEPARTURE ROUTE DESCRIPTION

TAKE-OFF RWY 5L: Climb heading 054° , thence....

TAKE-OFF RWY 5R: Climb heading 054° , thence....

TAKE-OFF RWY 14: Climb heading 144° to 1400, thence...

TAKE-OFF RWY 23L: Climb heading 234° to 1900, thence...

TAKE-OFF RWY 23R: Climb heading 234° to 1800, thence...

TAKE-OFF RWY 32: Climb heading 324° , thence....

....climb on assigned heading for RADAR vectors to join filed route/fix,
Jets maintain 7000, Props maintain 2000. Expect clearance to filed
altitude/flight level ten minutes after departure.

PROTOTYPE-NOT FOR NAVIGATION

RALEIGH EIGHT DEPARTURE

TAKE-OFF OBSTACLES

PROTOTYPE-NOT FOR NAVIGATION

- Rwy 5L: Rwy LT 10' from DER, 5' right of centerline, 2' AGL/410' MSL.
 Rwy LT 10' from DER, 4' left of centerline, 2' AGL/410' MSL.
 Tree 1903' from DER, 986' right of centerline, 467' MSL.
 Tree 1926' from DER, 1004' left of centerline, 483' MSL.
 Trees beginning 2011' from DER, 912' right of centerline, up to 476' MSL.
 Tree 2126' from DER, 1052' left of centerline, 489' MSL.
 Trees beginning 3507' from DER, 1270' left of centerline, up to 519' MSL.
 Tree 3653' from DER, 1328' left of centerline, 524' MSL.
 Trees beginning 3662' from DER, 1372' left of centerline, up to 536' MSL.
 Water tower, tank beginning 4045' from DER, 1576' right of centerline, up to 144' AGL/547' MSL.
 Tree 5171' from DER, 1749' left of centerline, 541' MSL.
- Rwy 5R: Rwy LT beginning 1' from DER, 5' left of centerline, up to 1' AGL/ 432' MSL.
 Rwy LT beginning 1' from DER, 4' right of centerline, up to 1' AGL/ 432' MSL.
 Tree 1215' from DER, 791' right of centerline, 466' MSL.
 Tree 1350' from DER, 760' right of centerline, 471' MSL.
 Trees beginning 1480' from DER, 846' right of centerline, up to 481' MSL.
- Rwy 14: Rwy LT 9' from DER, 29' right of centerline, 2' AGL/ 427' MSL.
 Rwy LT 10' from DER, 29' left of centerline, 2' AGL/ 427' MSL.
 Trees beginning 1160' from DER, 757' right of centerline, up to 499' MSL.
 Trees beginning 1397' from DER, 856' left of centerline, up to 539' MSL.
 Tree 1489' from DER, 771' right of centerline, 510' MSL.
 Trees beginning 1601' from DER, 871' right of centerline, up to 528' MSL.
 Tree 2033' from DER, 1044' left of centerline, 544' MSL.
 Tree 2130' from DER, 968' right of centerline, 540' MSL.
 Trees beginning 2271' from DER, 882' left of centerline, up to 546' MSL.
 Tree 2328' from DER, 1014' right of centerline, 555' MSL.
 Tree 2484' from DER, 876' right of centerline, 556' MSL.
 Tree 2560' from DER, 1101' right of centerline, 563' MSL.
 Tree 2751' from DER, 1132' right of centerline, 570' MSL.
 Tree 3693' from DER, 391' right of centerline, 572' MSL.
 Trees beginning 3913' from DER, 155' left of centerline, up to 568' MSL.
 Tree 4055' from DER, 657' right of centerline, 578' MSL.
 Tree 4118' from DER, 657' right of centerline, 578' MSL.
- Rwy 23L: Rwy LT 1' from DER, 5' left of centerline, 2' AGL/ 399' MSL.
 Rwy LT 2' from DER, 5' right of centerline, 1' AGL/ 399' MSL.
 Bush 18' from DER, 259' left of centerline, 400' MSL.
 Tree 1029' from DER, 757' left of centerline, 431' MSL.
 Tree 1361' from DER, 793' left of centerline, 433' MSL.
 Tree 1372' from DER, 862' left of centerline, 439' MSL.
 Pole 1457' from DER, 878' right of centerline, 105' AGL/ 452' MSL.
 Trees beginning 1469' from DER, 817' left of centerline, up to 451' MSL.
- Rwy 23R: Rwy LT 10' from DER, 4' right of centerline, 1' AGL/ 368' MSL.
 Rwy LT 10' from DER, 4' left of centerline, 1' AGL/ 368' MSL.
- Rwy 32: Rwy LT 9' from DER, 29' left of centerline, 2' AGL/ 433' MSL.
 Rwy LT 10' from DER, 29' right of centerline, 2' AGL/ 433' MSL.
 Pole 1170' from DER, 618' left of centerline, 55' AGL/ 485' MSL.
 Pole beginning 1186' from DER, 626' left of centerline, up to 54' AGL/ 486' MSL.
 Bldg 1242' from DER, 753 right of centerline, 38' AGL/ 473' MSL.
 Ctrl twr 2376' from DER, 898 right of centerline, 231' AGL/ 659' MSL.

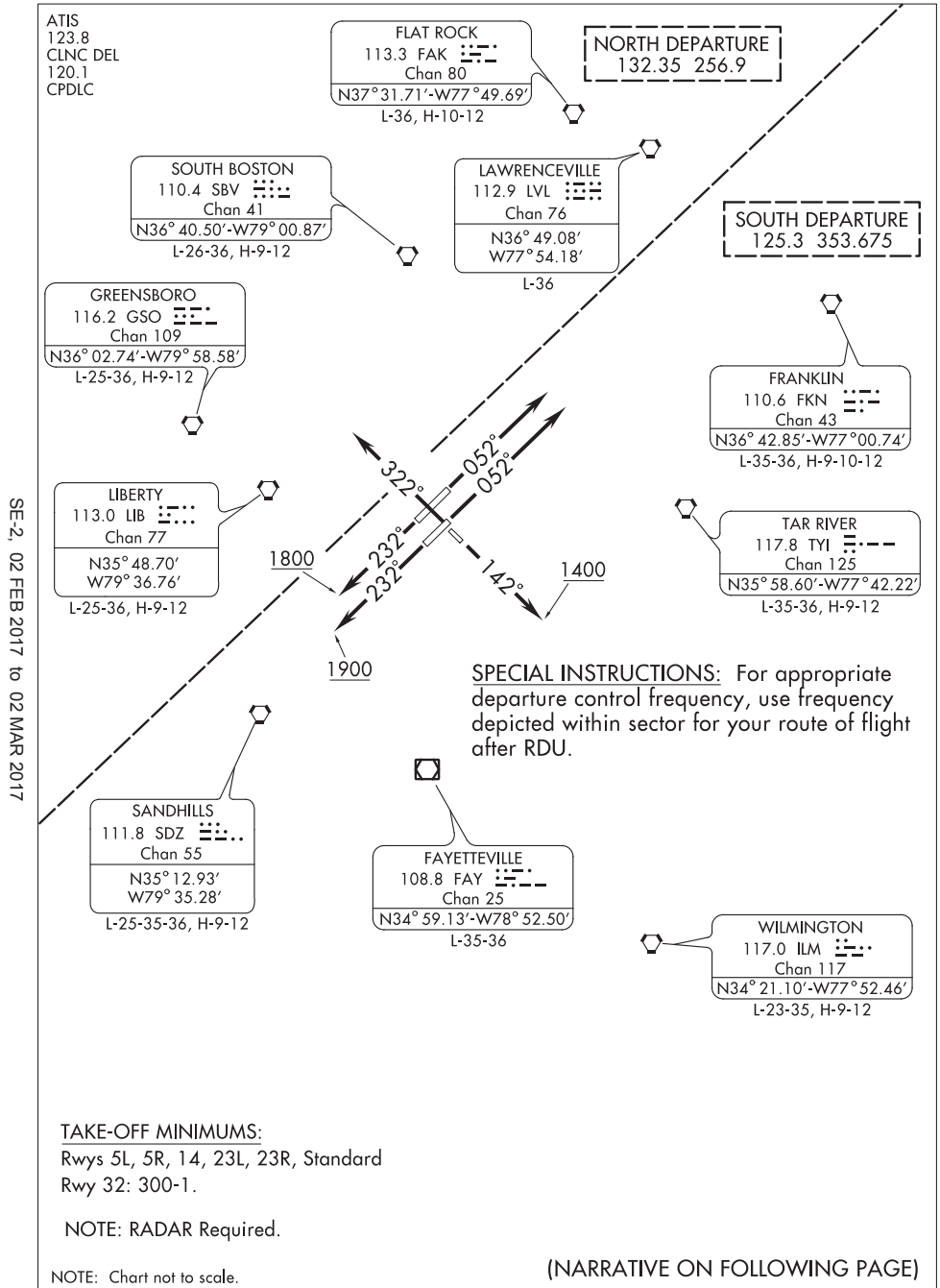
CURRENT - FOR INFO ONLY
FIG ON REQUEST

(RDU7.RDU) 16315

SL-516 (FAA)

RALEIGH-DURHAM INTL (RDU)
RALEIGH/DURHAM, NORTH CAROLINA

RALEIGH SEVEN DEPARTURE



SE-2, 02 FEB 2017 to 02 MAR 2017

SE-2, 02 FEB 2017 to 02 MAR 2017

RALEIGH SEVEN DEPARTURE
(RDU7.RDU) 05JUL07

RALEIGH/DURHAM, NORTH CAROLINA
RALEIGH-DURHAM INTL (RDU)

CURRENT - FOR INFO ONLY

(RDU7.RDU) 16315

SL-516 (FAA)

RALEIGH SEVEN DEPARTURE

RALEIGH-DURHAM INTL (RDU)
RALEIGH/DURHAM, NORTH CAROLINA



DEPARTURE ROUTE DESCRIPTION

TAKE-OFF RWY 5L: Climb heading 052°, thence....

TAKE-OFF RWY 5R: Climb heading 052°, thence....

TAKE-OFF RWY 14: Climb heading 142° to 1400, thence...

TAKE-OFF RWY 23L: Climb heading 232° to 1900, thence...

TAKE-OFF RWY 23R: Climb heading 232° to 1800, thence...

TAKE-OFF RWY 32: Climb heading 322°, thence....

.... or as assigned for vectors to join filed route/fix. Expect clearance to
filed altitude/flight level ten minutes after departure.

TAKE-OFF OBSTACLES

NOTE: Rwy 5L, Tree 2,011 feet from DER, 949 feet right of centerline, 80
feet AGL/469 feet MSL. Tree 3,802 feet from DER, 1,238 feet left
of centerline, 77 feet AGL/506 feet MSL. Tank 4,046 feet from
DER, 1,578 feet right of centerline, 138 feet AGL/547 feet MSL.

NOTE: Rwy 5R, Tree 1,437 feet from DER, 803 feet right of centerline,
80 feet AGL/469 feet MSL.

NOTE: Rwy 14, Multiple trees beginning 2,021 feet from DER, 510 feet
left of centerline, up to 122 feet AGL/571 feet MSL. Multiple trees
beginning 2,468 feet from DER, 1 foot right of centerline, up to
110 feet AGL/559 feet MSL.

NOTE: Rwy 23L, Tree 1,496 feet from DER, 797 feet left of centerline,
58 feet AGL/447 feet MSL. Lt pole 1,458 feet from DER 878 feet
right of centerline, 93 feet AGL/452 feet MSL.

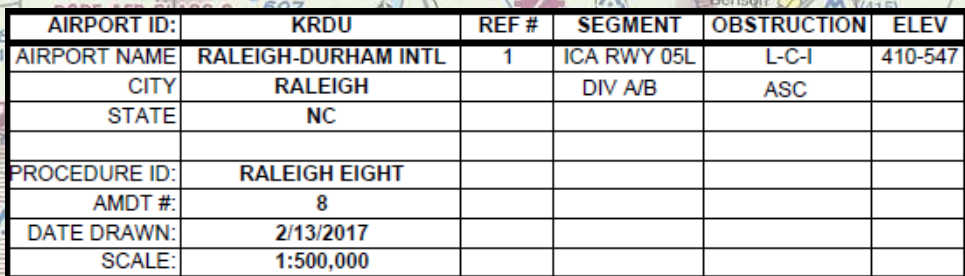
NOTE: Rwy 32, Multiple poles 1,170 feet from DER, 634 feet left of
centerline, up to 47 feet AGL/486 feet MSL. Antenna 1,243
feet from DER, 754 feet right of centerline, 34 feet AGL/473
feet MSL. Control tower and antenna 2,207 feet from DER, 911
feet right of centerline, 221 feet AGL/660 feet MSL.

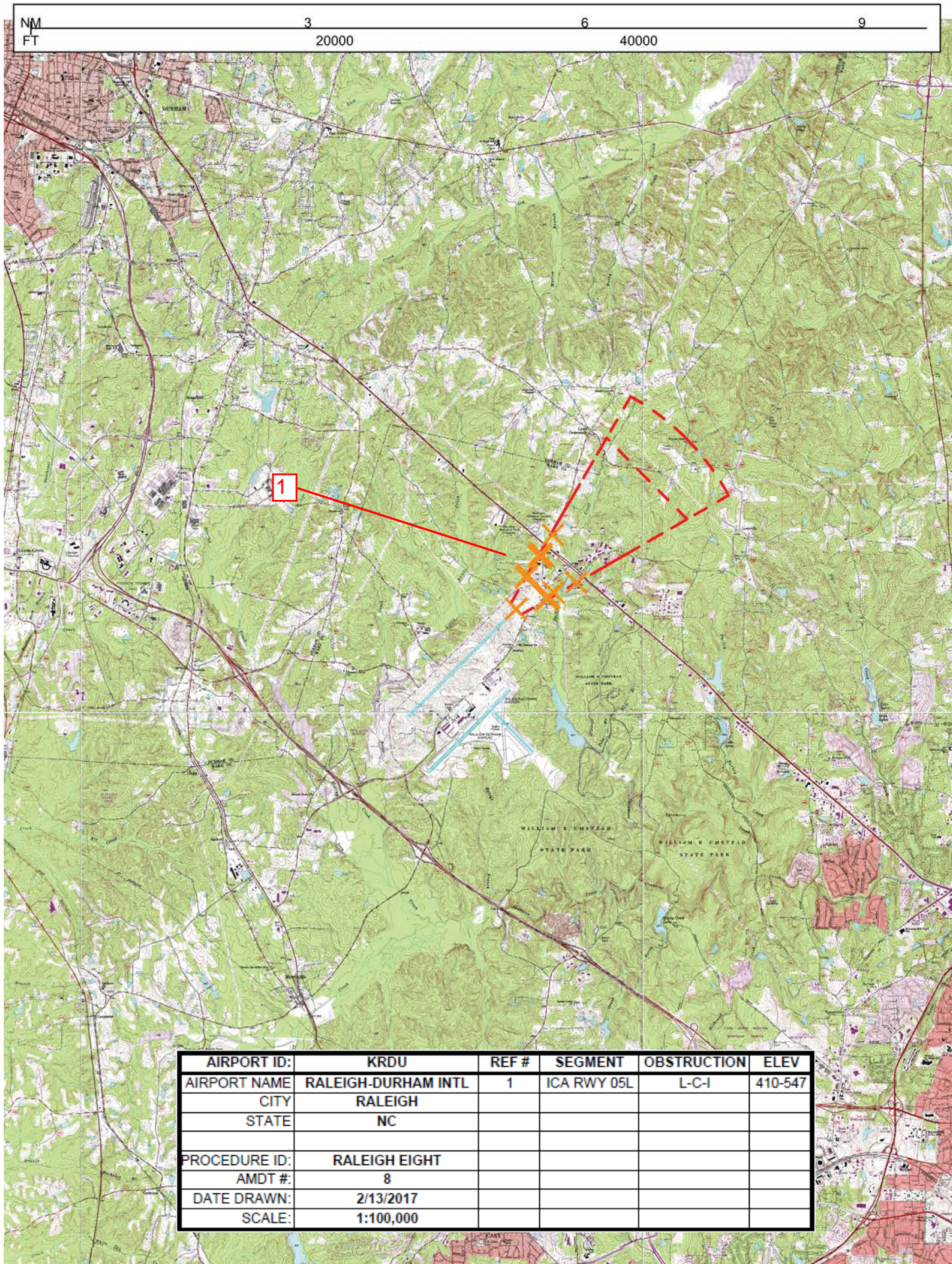
SE-2, 02 FEB 2017 to 02 MAR 2017

SE-2, 02 FEB 2017 to 02 MAR 2017

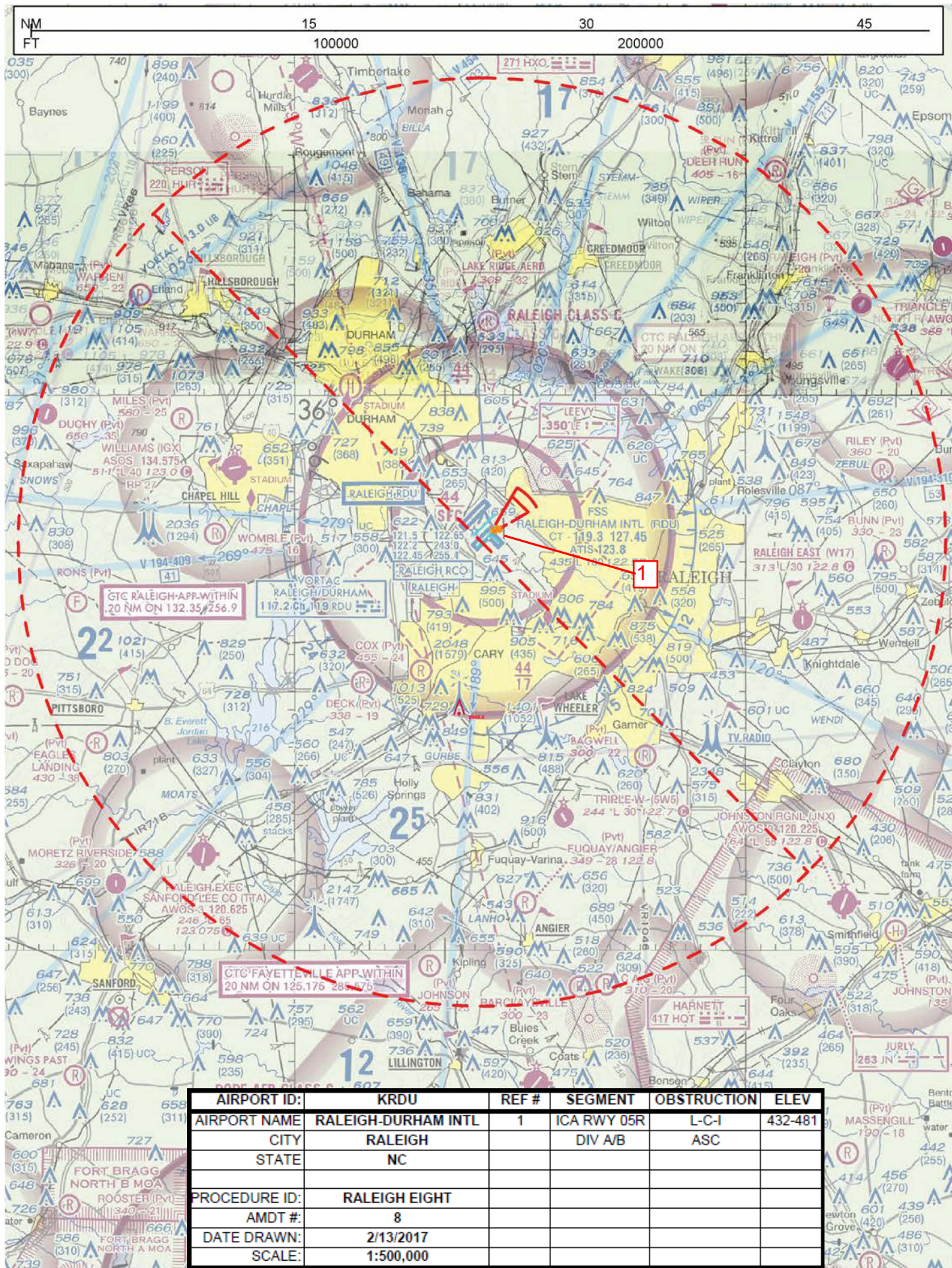
RALEIGH SEVEN DEPARTURE
(RDU7.RDU) 05JUL07

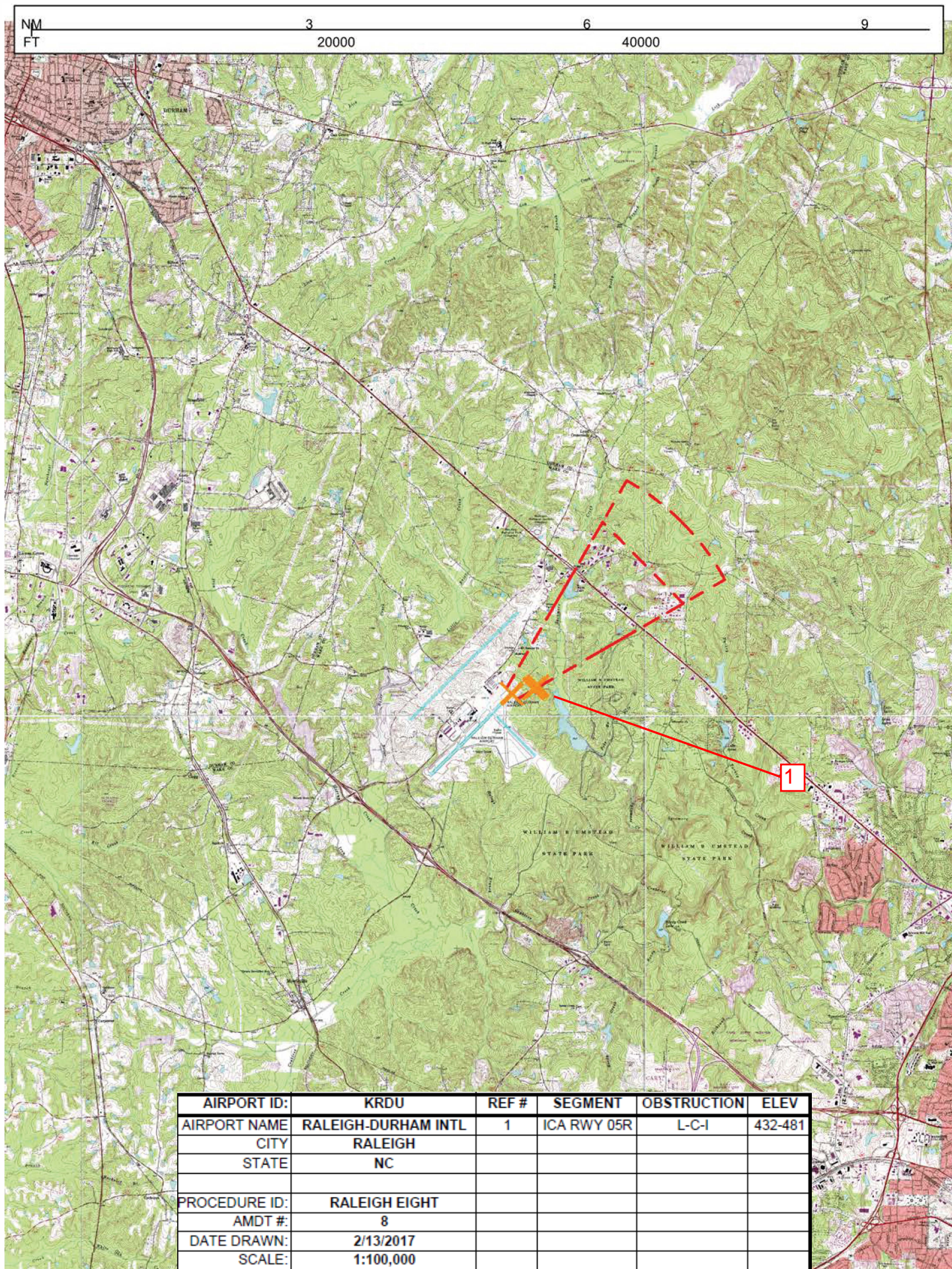
RALEIGH/DURHAM, NORTH CAROLINA
RALEIGH-DURHAM INTL (RDU)



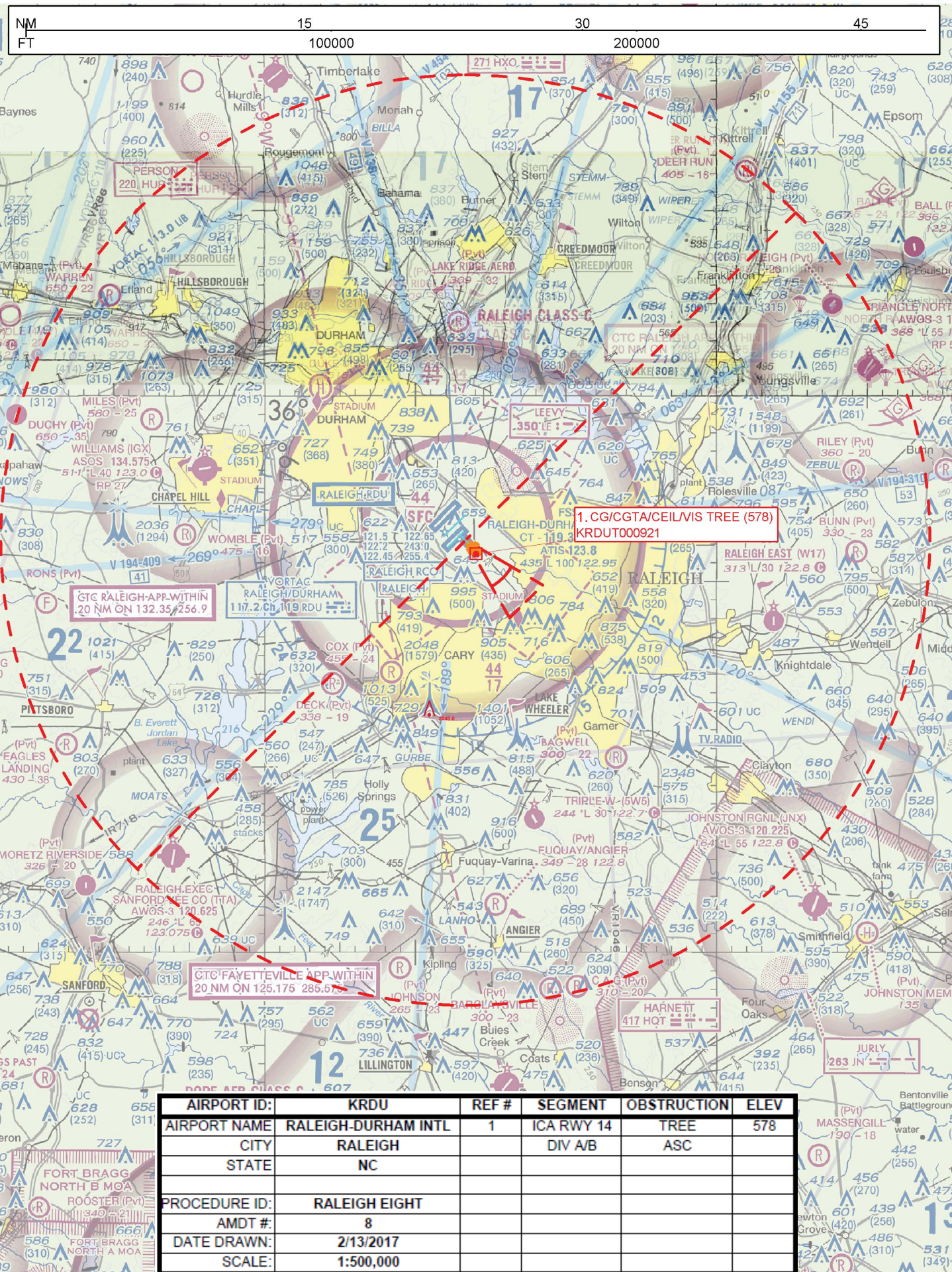


AIRPORT ID:	KRDU	REF #	SEGMENT	OBSTRUCTION	ELEV
AIRPORT NAME	RALEIGH-DURHAM INTL	1	ICA RWY 05L	L-C-I	410-547
CITY	RALEIGH				
STATE	NC				
PROCEDURE ID:	RALEIGH EIGHT				
AMDT #:	8				
DATE DRAWN:	2/13/2017				
SCALE:	1:100,000				





AIRPORT ID:	KRDU	REF #	SEGMENT	OBSTRUCTION	ELEV
AIRPORT NAME:	RALEIGH-DURHAM INTL	1	ICA RWY 05R	L-C-I	432-481
CITY	RALEIGH				
STATE	NC				
PROCEDURE ID:	RALEIGH EIGHT				
AMDT #:	8				
DATE DRAWN:	2/13/2017				
SCALE:	1:100,000				



AIRPORT ID:	KRDU	REF #	SEGMENT	OBSTRUCTION	ELEV
AIRPORT NAME	RALEIGH-DURHAM INTL	1	ICA RWY 14	TREE	578
CITY	RALEIGH		DIV A/B	ASC	
STATE	NC				
PROCEDURE ID:	RALEIGH EIGHT				
AMDT #:	8				
DATE DRAWN:	2/13/2017				
SCALE:	1:500,000				

NM
FT

3

6

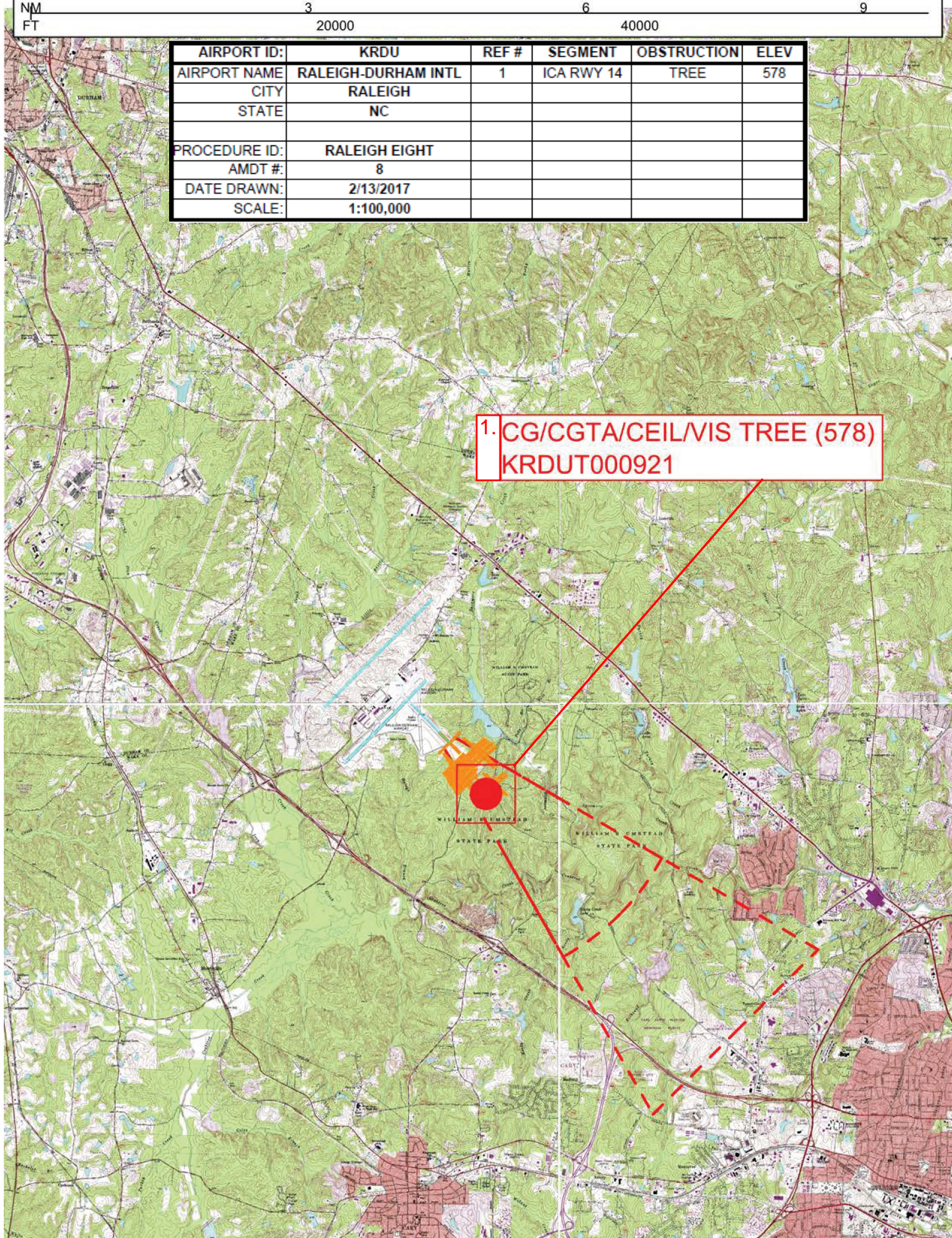
9

20000

40000

AIRPORT ID:	KRDU	REF #	SEGMENT	OBSTRUCTION	ELEV
AIRPORT NAME	RALEIGH-DURHAM INTL	1	ICA RWY 14	TREE	578
CITY	RALEIGH				
STATE	NC				
PROCEDURE ID:	RALEIGH EIGHT				
AMDT #:	8				
DATE DRAWN:	2/13/2017				
SCALE:	1:100,000				

1. CG/CGTA/CEIL/VIS TREE (578)
KRDUT000921



NM
FT

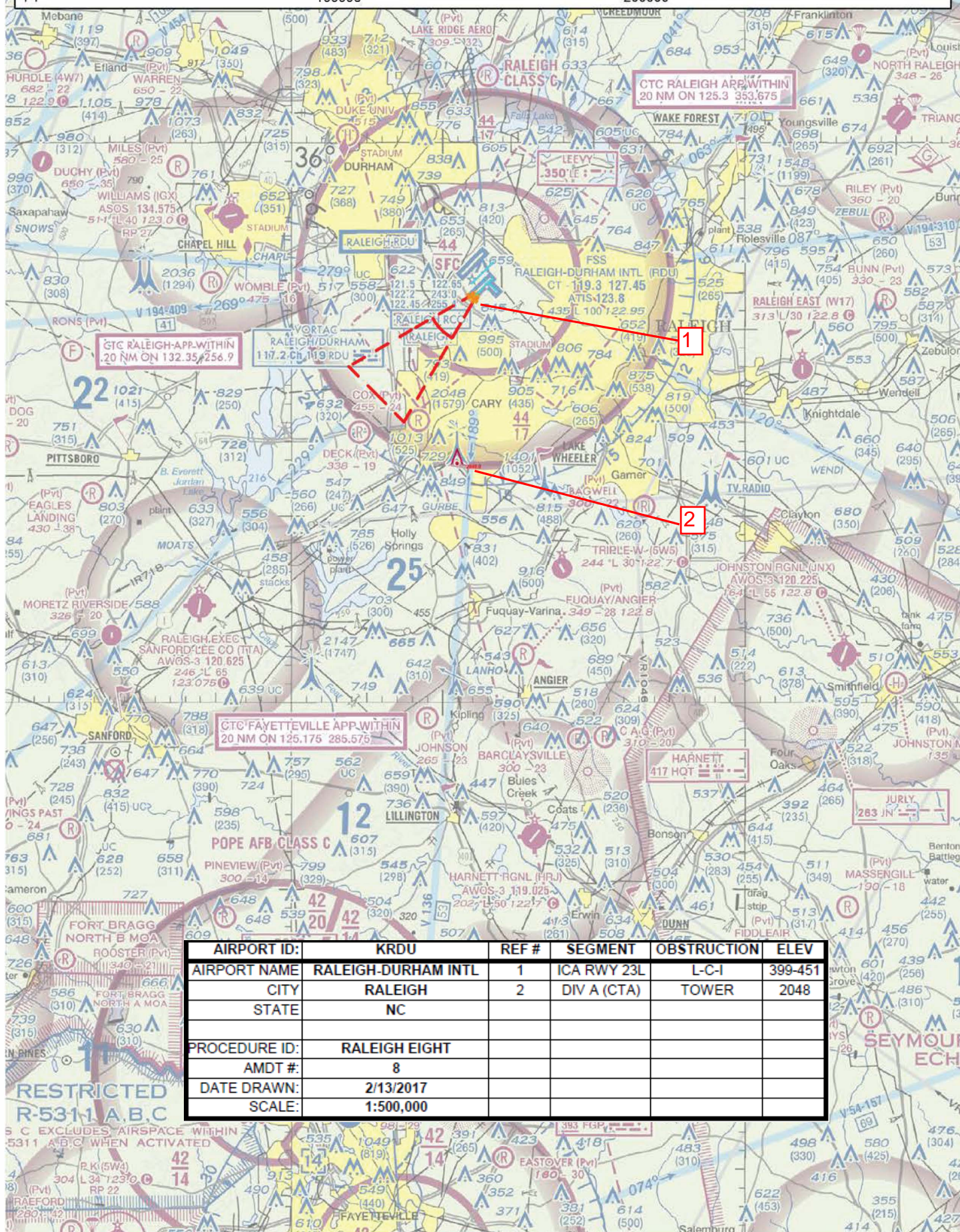
15

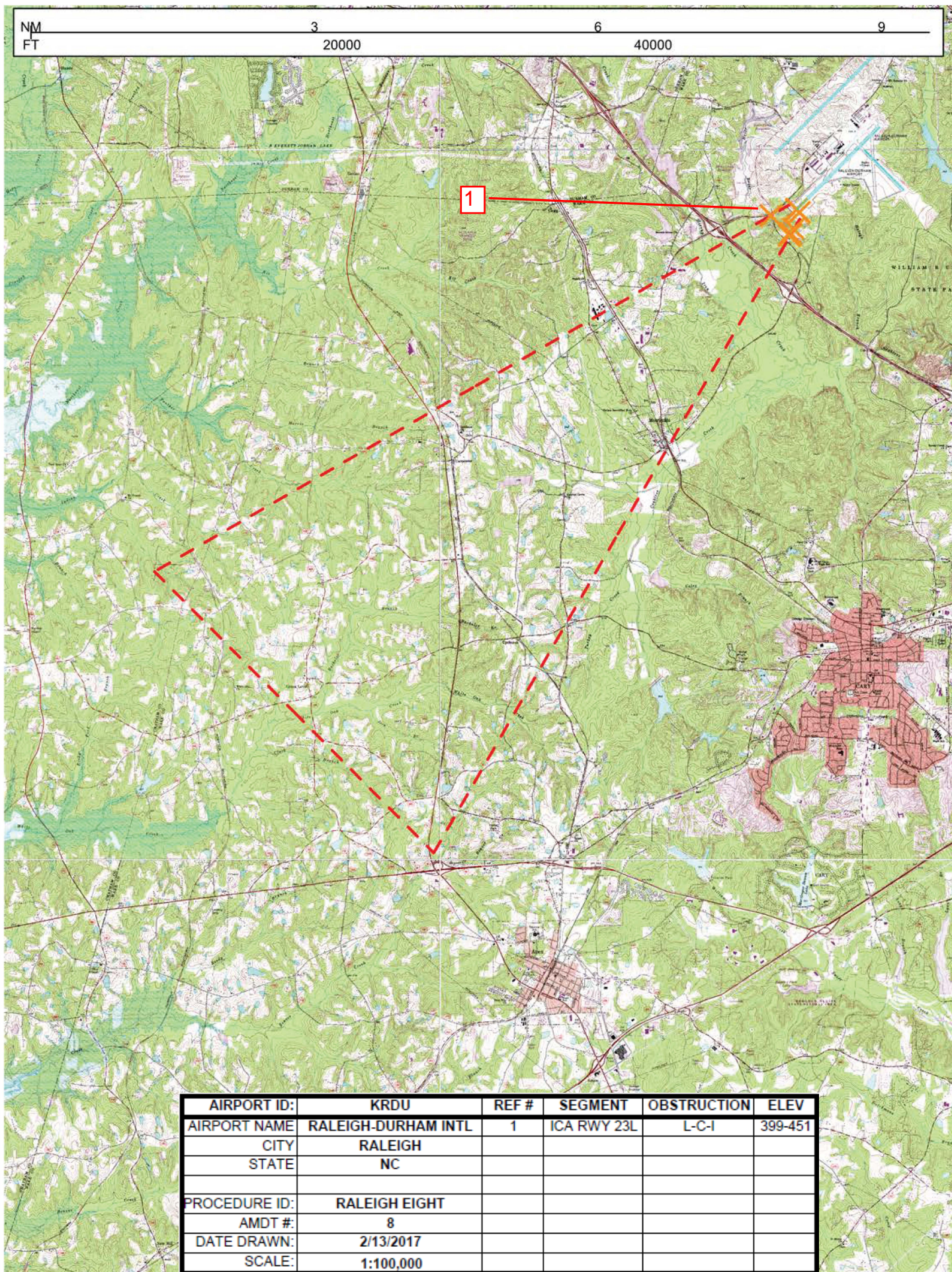
30

45

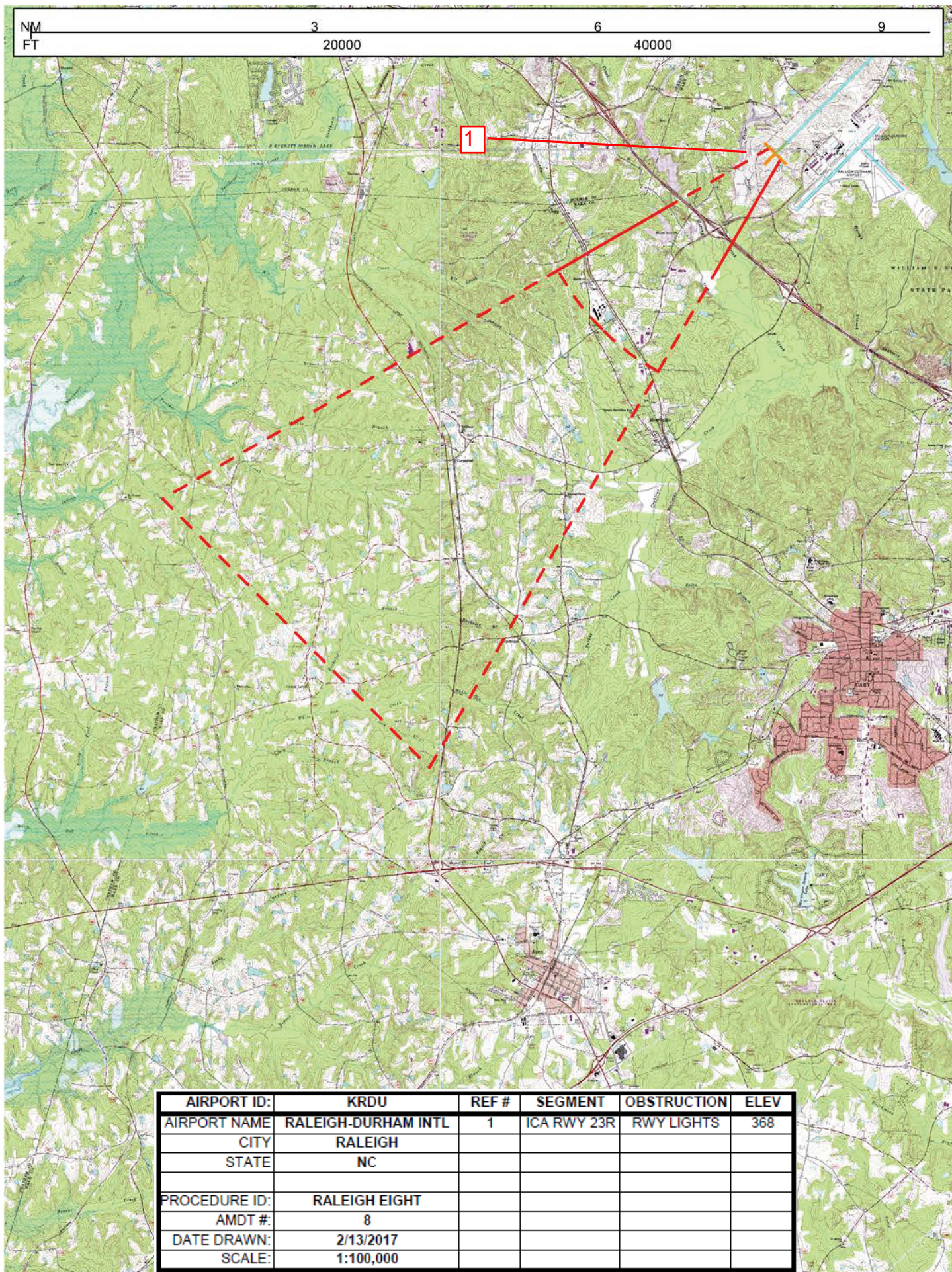
100000

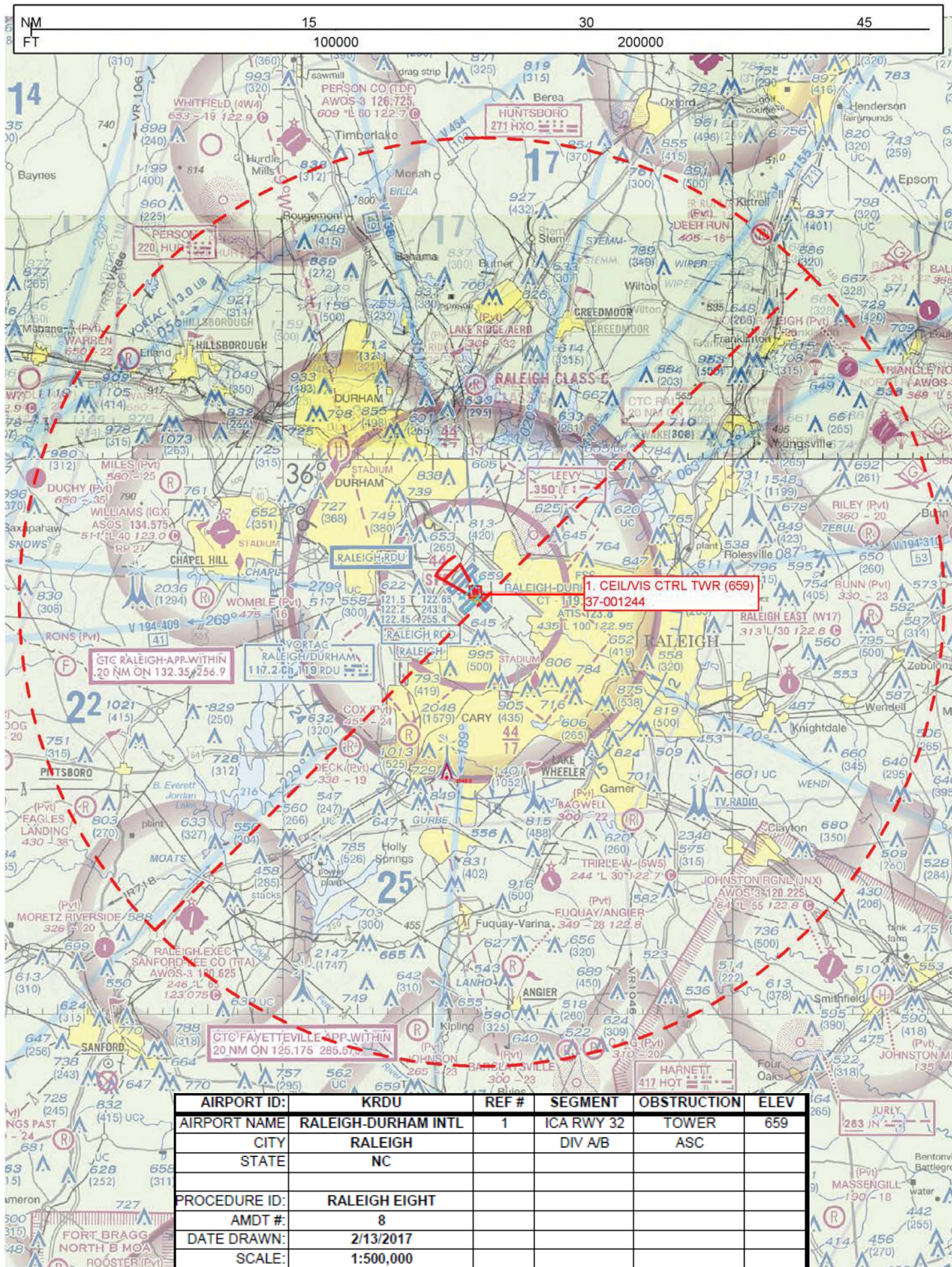
200000

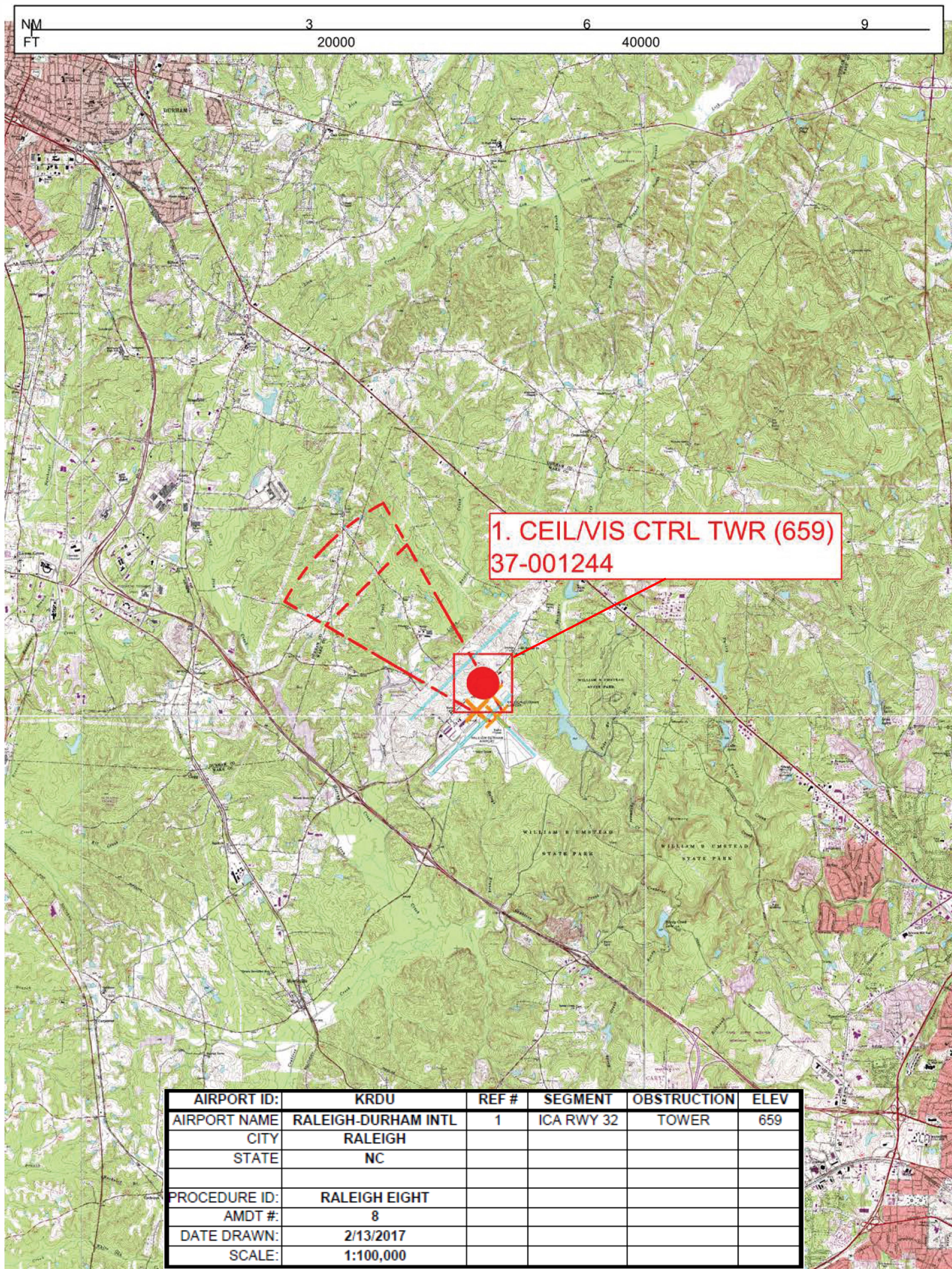




AIRPORT ID:	KRDU	REF #	SEGMENT	OBSTRUCTION	ELEV
AIRPORT NAME	RALEIGH-DURHAM INTL	1	ICA RWY 23R	RWY LIGHTS	368
CITY	RALEIGH	2	DIV A (CTA)	TOWER	2048
STATE	NC				
PROCEDURE ID:	RALEIGH EIGHT				
AMDT #:	8				
DATE DRAWN:	2/13/2017				
SCALE:	1:500,000				







AIRPORT ID:	KRDU	REF #	SEGMENT	OBSTRUCTION	ELEV
AIRPORT NAME	RALEIGH-DURHAM INTL	1	ICA RWY 32	TOWER	659
CITY	RALEIGH				
STATE	NC				
PROCEDURE ID:	RALEIGH EIGHT				
AMDT #:	8				
DATE DRAWN:	2/13/2017				
SCALE:	1:100,000				