
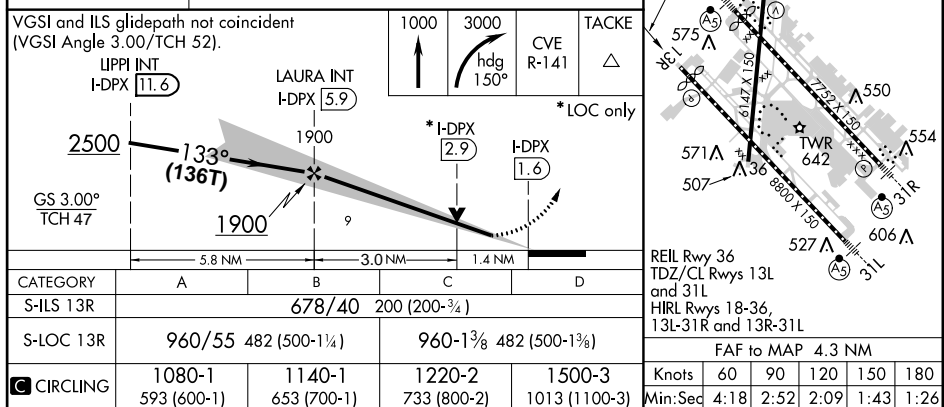
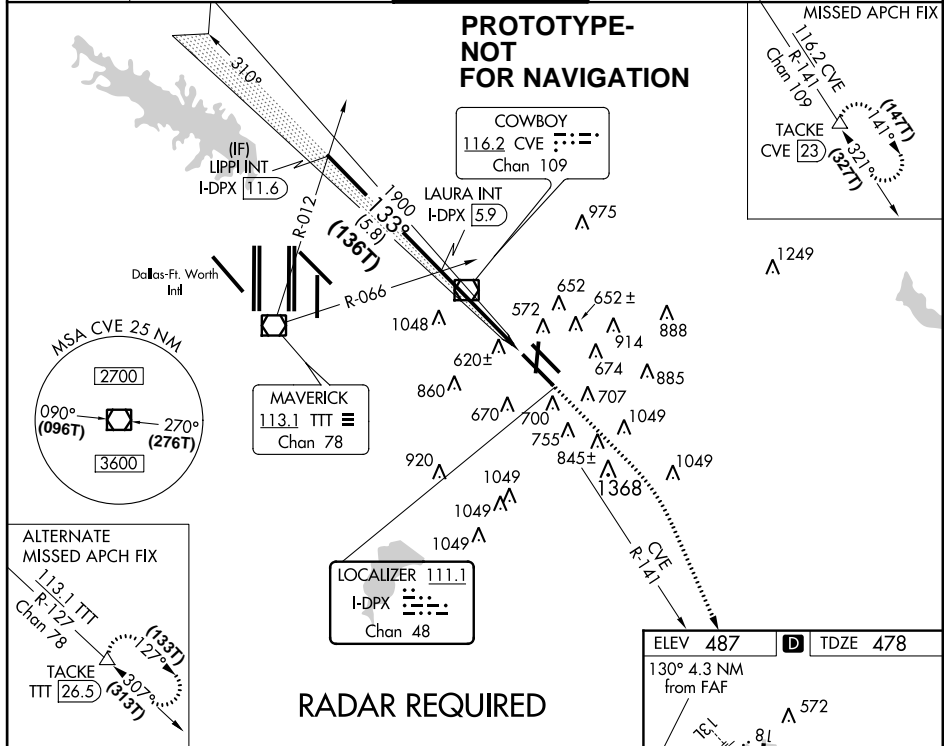


Flight Procedure Tracking Form		Action: FLIGHT CHECK	Task Type: IAP	Date Open: 11/12/2014	Task #: 2014111224490801001	Request #: 20141112244908
Procedure: ILS Y OR LOC Y RWY 13R AMDT 6			Airport ID: KDAL	Airport: DALLAS LOVE FIELD		Reimbursable #: NO
City: DALLAS	ST: TX	GPS #:	Estimated Chart Date: 11/10/2016		FICO #:	
Fac ID: NOCHANGE		Fac. Type:		Specialist: DONALD LANIER		
Procedure Review						
	Rec'd	Rel'd	Full Name	Comments		
Lead:	11/20/2014	09/21/2016	PETER GETZ	QUALITY 9 CHECKED		
QA:	09/21/2016	09/15/2016	JACOB POWERS			
Liaison:	09/15/2016	09/16/2016	MARY MCDONALD			
Procedure Comments:			Remark Type: INFORMATION			
ACTIVE DATA USED FOR KDAL AIRPORT AND RUNWAYS PENDING DATA USED FOR DPX ILS 9/29/2016: THIS IS AN UPDATED COPY OF THE ORIGINAL FORM DEVELOPED ON 2/27/2015 1. CHANGED EFFECTIVE DATE FROM ROUTINE TO 11-10-16 (HARD DATE) 2. CHANGED APPROVED BY MANAGER FROM GEORGE GONZALES TO TONY LAWSON. 3. UPDATED MAG VAR FROM 6E 1990 TO 3E 2020. 4. UPDATED FINAL APPROACH COURSE AND INTERMEDIATE COURSE FROM 129.62 TO 132.62. 5. UPDATED LINE 3 FAC FROM 129.62 TO 132.62 CONTACT: TONY LAWSON(MANAGER)/PETE GETZ (LEAD), 405.954.2788/4919.						

LOC\DME I-DPX <u>111.1</u> Chan 48	APP CRS 130°	Rwy Idg 8310 TDZE 478 Apt Elev 487
-------------------------------------------------	------------------------	---------------------------------------------------------------

	<p>Simultaneous approach authorized with Rwy 13L. DME required. Circling to Rwy 18/36 NA. Disregard outer marker indication.</p>	<p>MISSED APPROACH: Climb to 1000 then climbing right turn to 3000 on heading 150° and CVE VOR/DME R-141 to TACKE/CVE 23 DME and hold.</p>
-----------------------------------------------------------------------------------	------------------------------------------------------------------------------------------------------------------------------------------	--------------------------------------------------------------------------------------------------------------------------------------------

ATIS 120.15	REGIONAL APP CON NORTH 124.3 282.275 SOUTH 125.2 343.65	LOVE TOWER 123.7 239.3	GND CON 121.75 348.6	CLNC DEL 127.9
----------------	---------------------------------------------------------------	---------------------------	-------------------------	-------------------



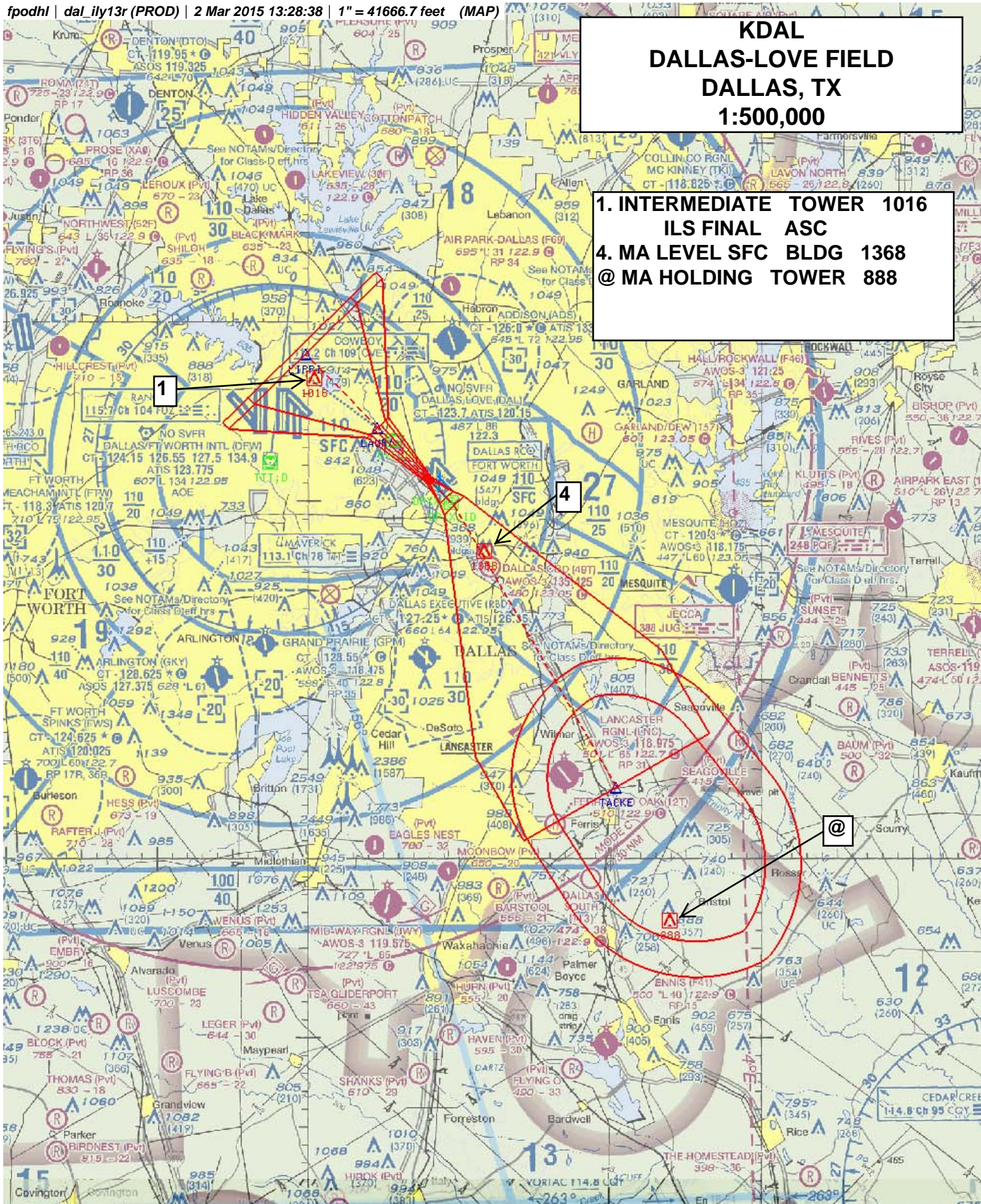
DALLAS-LOVE FIELD (DAL)
32°51'N-96°51'W ILS Y or LOC Y RWY 13R

Genomic map of the 100 kb region on chromosome 10p12.3. The map shows the location of the NM gene (NM_001163) and the FT gene (FT_1). The NM gene is located between 42,000 and 294,000 bp, and the FT gene is located between 42,000 and 294,000 bp. The map also shows the location of the 100 kb region on chromosome 10p12.3.

***fpodhl* | *dal_ily13r* (PROD) | 2 Mar 2015 13:28:38 | 1" = 41666.7 feet (MAP)**

**KDAL
DALLAS-LOVE FIELD
DALLAS, TX
1:500,000**

1. INTERMEDIATE TOWER 1016
ILS FINAL ASC
4. MA LEVEL SFC BLDG 1368
@ MA HOLDING TOWER 888



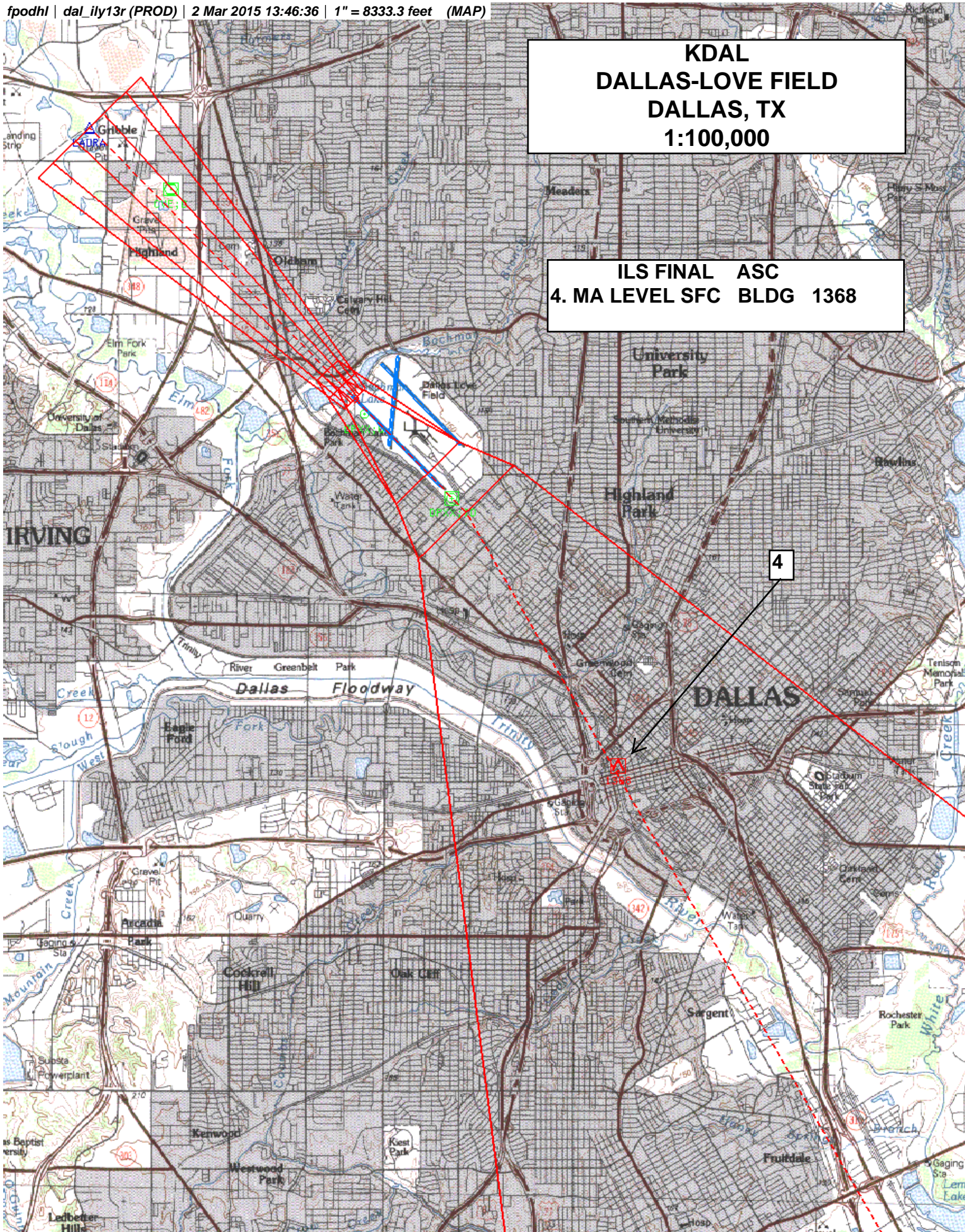
ILS Y OR LOC Y RWY 13R AMDT 6 FLIGHT INSPECTION MAP

NM 1 2 3 4 5 6 7 8 9 10
FT 8000 16000 24000 32000 40000 48000 56000 64000

fpoahl | dal_ily13r (PROD) | 2 Mar 2015 13:46:36 | 1" = 8333.3 feet (MAP)

KDAL
DALLAS-LOVE FIELD
DALLAS, TX
1:100,000

ILS FINAL ASC
4. MA LEVEL SFC BLDG 1368

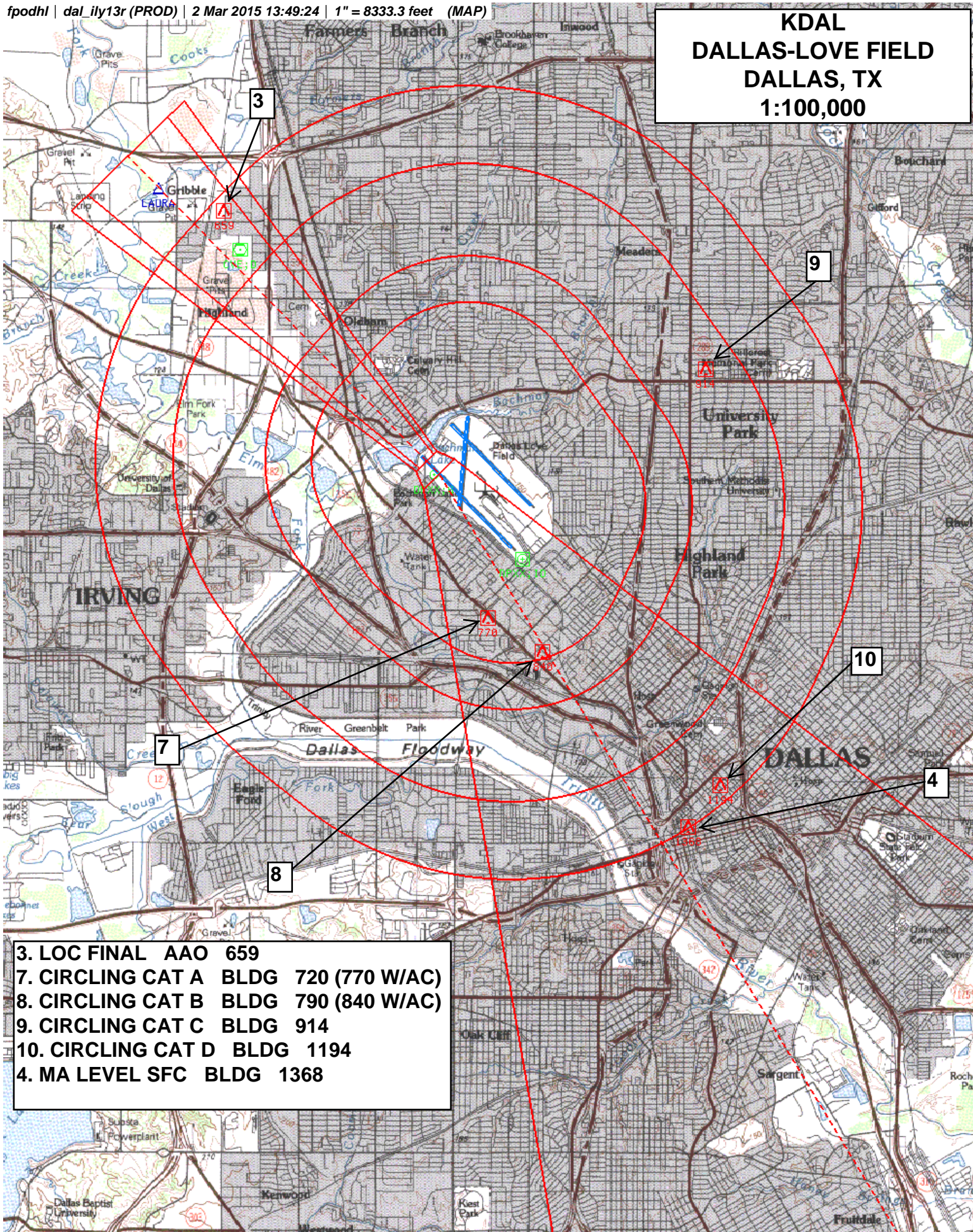


ILS Y OR LOC Y RWY 13R AMDT 6 FLIGHT INSPECTION MAP

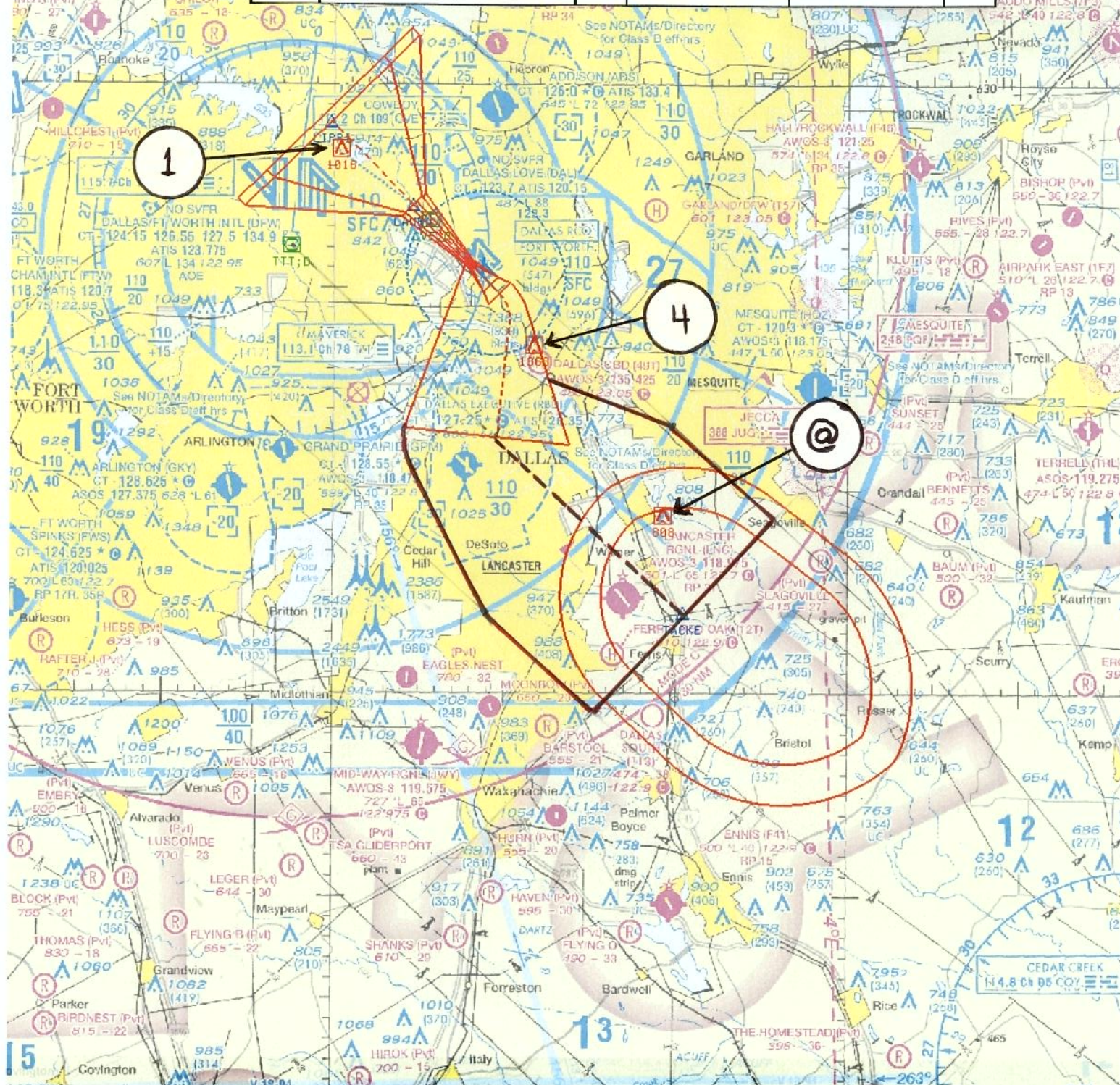
NM 1 2 3 4 5 6 7 8 9 10
FT 8000 16000 24000 32000 40000 48000 56000 64000

fpodhl | dal_ily13r (PROD) | 2 Mar 2015 13:49:24 | 1" = 8333.3 feet (MAP)

KDAL
DALLAS-LOVE FIELD
DALLAS, TX
1:100,000



Airport ID:	KDAL	ALTERNATE MISSED			
Apt Name:	DALLAS-LOVE FIELD	No	SEGMENT	OBSTRUCTION	ELEV
City:	DALLAS	1	INTERMEDIATE	TOWER	1016
State:	TX		ILS FINAL	ASC	
Proc ID:	ILS OR LOC Y RWY 13R	4	MISSED LVL SFC	BLDG	1368
Amdt #:	6	@	MISSED HOLDING	TOWER	808
Date:	3/3/15				
Scale:	1:500,000				



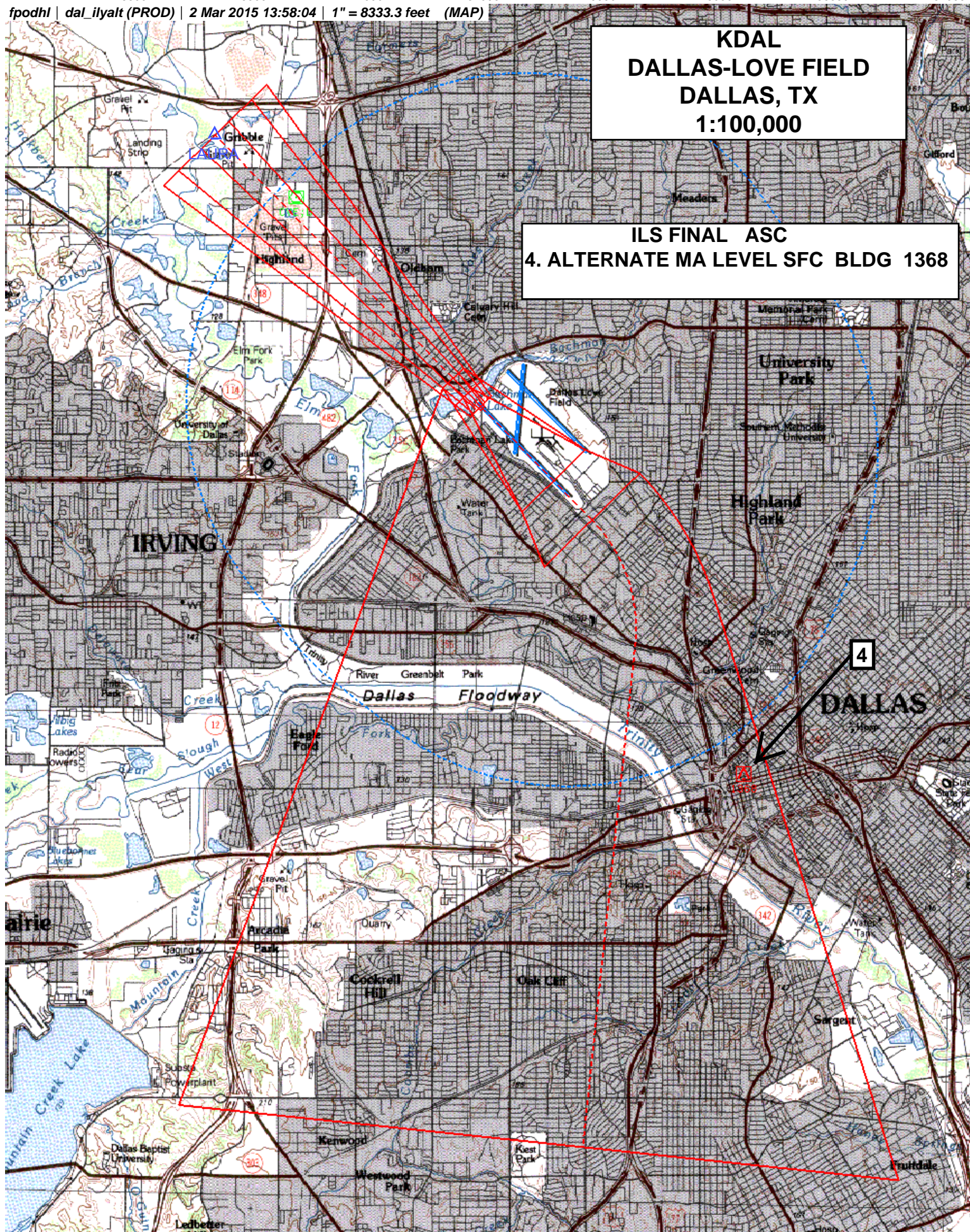
ILS Y OR LOC Y RWY 13R AMDT 6 FLIGHT INSPECTION MAP

NM 1 2 3 4 5 6 7 8 9 10
FT 8000 16000 24000 32000 40000 48000 56000 64000

fpodhl dal_ilyalt (PROD) 2 Mar 2015 13:58:04 1" = 8333.3 feet (MAP)

**KDAL
DALLAS-LOVE FIELD
DALLAS, TX
1:100,000**

**ILS FINAL ASC
4. ALTERNATE MA LEVEL SFC BLDG 1368**



TERMINAL AIRSPACE DATA REQUIREMENTS

CITY: **DALLAS**

STATE: **TX**

AIRPORT NAME: **DALLAS LOVE FIELD**

ID: **KDAL**

PROCEDURE: **ILS Y OR LOC Y RWY 13R**

AMDT: **6**

DOCKET#: **NOT REQUIRED**

(96-AXX-X/Required/Not Required)

ALL DIST TO 1/100 NM; ELEV TO NEAREST FT; COORD TO 1/100 SEC; DEG TO 1/100 DG.

- | | | | |
|-------------------------------------------------------------------------------------------|----------------------------------|--------------------------------|---------------|
| 1. Distance from | <u>THLD</u> | to 1000' point | <u>3.07</u> |
| <small>(Enter THLD, FAF, ARP, FACILITY, as appropriate)</small> | | | |
| 2. Width of | <u>FINAL</u> | segment at 1000' point | <u>0.88</u> |
| <small>(Enter appropriate segment, final, intermediate, etc.)</small> | | | |
| 3. True Course of | <u>FINAL</u> | segment containing 1000' point | <u>135.62</u> |
| 4. High Terrain in | <u>FINAL</u> | segment containing 1000' point | <u>470</u> |
| 5. Distance from | <u>THLD</u> | to 1500' point | <u>9.29</u> |
| <small>(If 1500' point in PT maneuvering area or holding pattern note in remarks)</small> | | | |
| 6. Width of | <u>INTERMEDIATE</u> | segment at 1500' point | <u>7.05</u> |
| 7. True Course of | <u>INTERMEDIATE</u> | segment containing 1500' point | <u>135.62</u> |
| 8. High Terrain in | <u>INTERMEDIATE</u> | segment containing 1500' point | <u>604</u> |
| 9. Threshold Coordinates (if straight-in) ... | <u>#325101.28N / 0965144.42W</u> | | |
| 10. ARP Coordinates | <u>325049.60N / 0965106.38W</u> | | |
| 11. Runway Approach End and distance furthest from ARP | RWY | <u>31L</u> | |
| | Distance | <u>0.89</u> | NM |
| 12. FAF Coordinates | <u>325406.93N / 0965519.83W</u> | | |

REMARKS: Approach/Drawing attached.

THLD DISPLACED 489 FT. ACTUAL THLD LOCATION: 325104.74N-0965148.42W