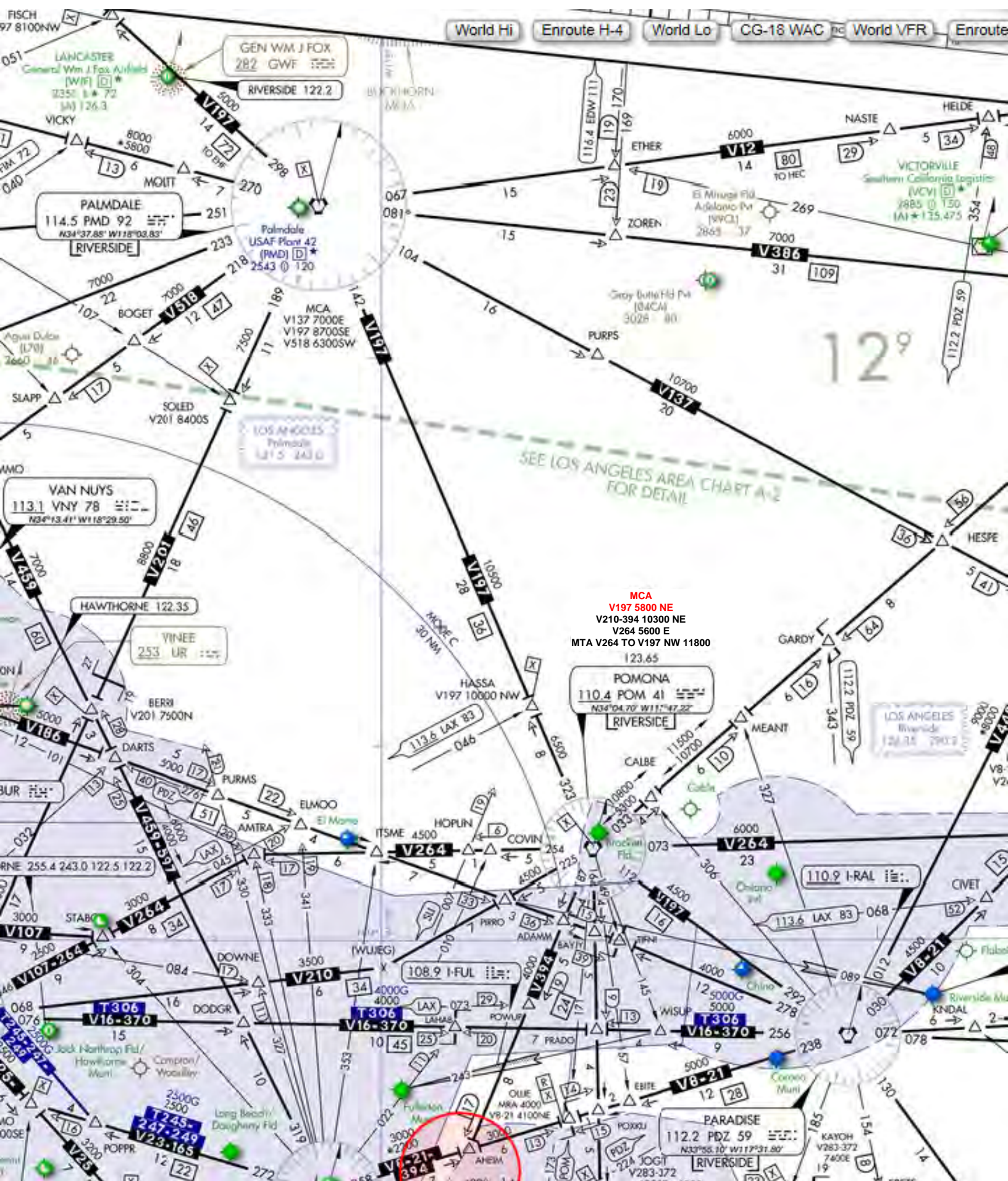
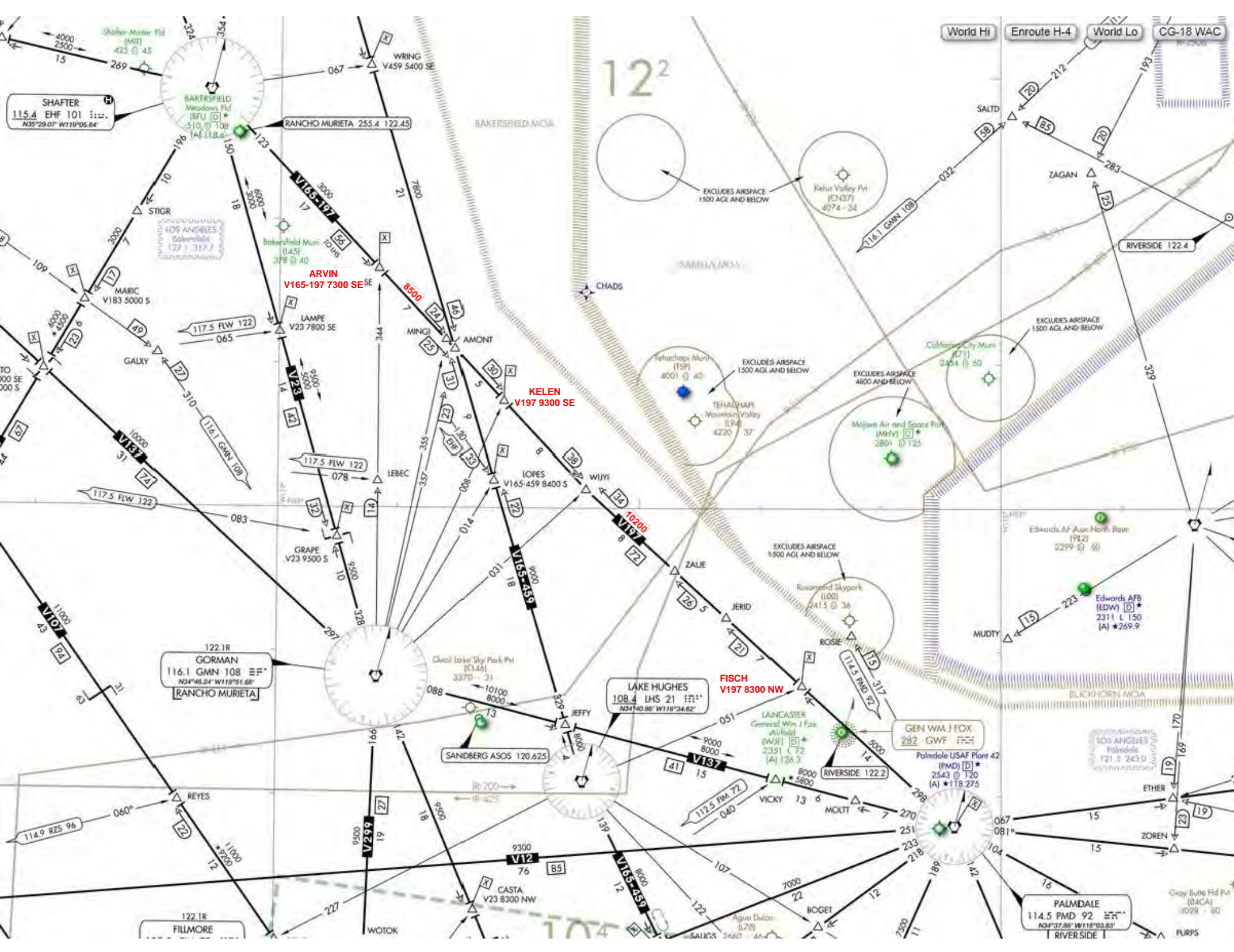


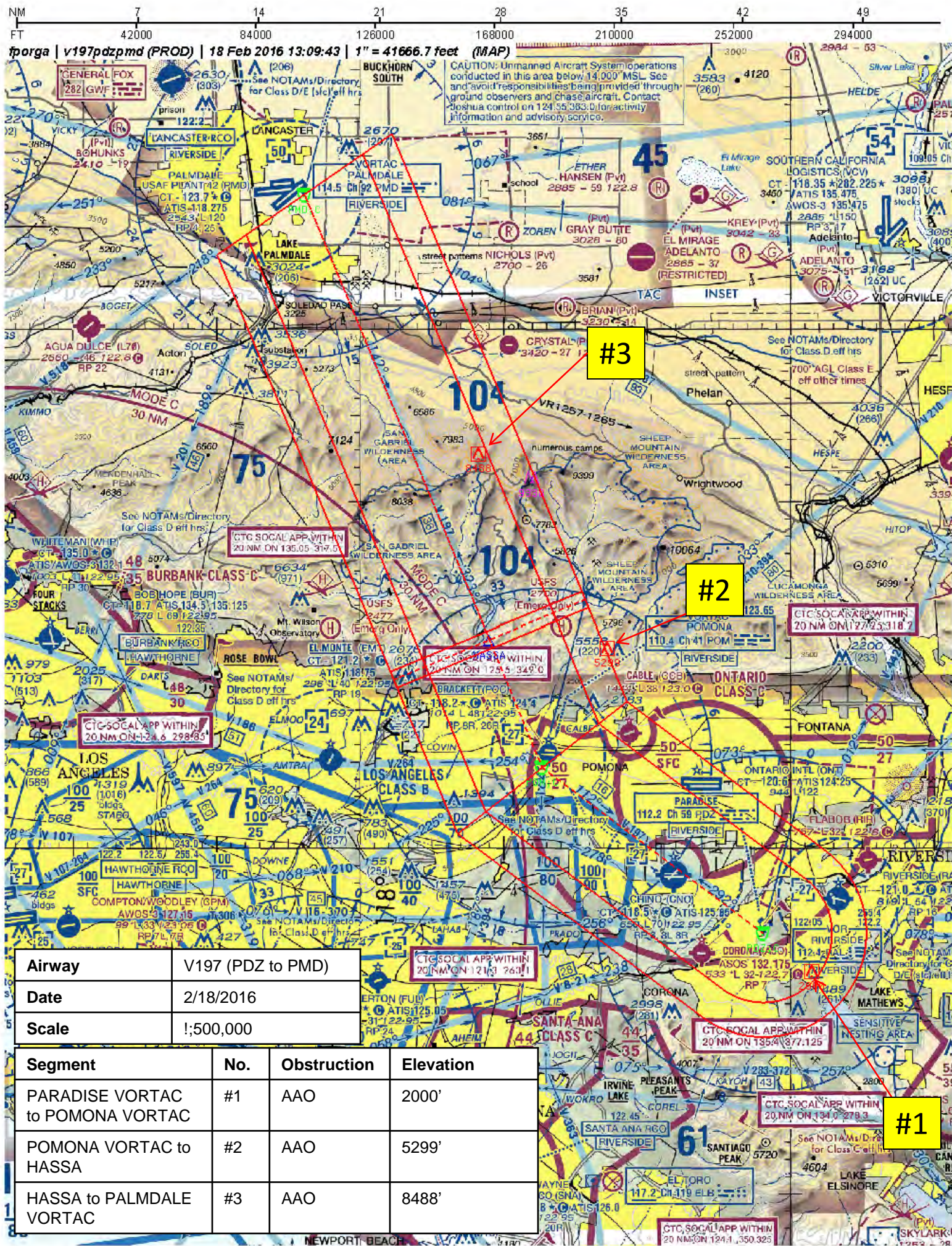
<b>Flight Procedure Tracking Form</b>		<b>Action:</b> FLIGHT CHECK	<b>Task Type:</b> AWSEG	<b>Date Open:</b> 02/18/2016	<b>Task #:</b> 2014103132548001020	<b>Request #:</b> 20141031325480
<b>Procedure:</b> V197 PARADISE (PDZ) VTAC CA TO SHAFTER (EHF) VTAC CA			<b>Airport ID:</b> CA	<b>Airport:</b>		<b>Reimbursable #:</b> NO
<b>City:</b>	<b>ST:</b> CA	<b>GPS #:</b>	<b>Estimated Chart Date:</b> 05/26/2016		<b>FICO #:</b>	
<b>Fac ID:</b> N/A		<b>Fac. Type:</b>		<b>Specialist:</b> ROBERT ABBOTT		
<b>Procedure Review</b>						
	<b>Rec'd</b>	<b>Rel'd</b>	<b>Full Name</b>	<b>Comments</b>		
<b>Lead:</b>	01/05/2015			<div style="border: 1px solid green; padding: 5px; text-align: center;"> <b>APPROVED</b>  <i>By Eugene J Newton at 8:28 am, Apr 08, 2016</i> </div>		
<b>QA:</b>						
<b>Liaison:</b>						
<b>Procedure Comments:</b>			ENROUTE	<b>Remark Type:</b> INFORMATION		
<p>8260-2S: AMONT, REV 18 INFO; ARVIN, REV 11; FISCH, REV 7; HASSA, REV 9 INFO; JERID, REV 4; KELEN, REV 3; MINGI, REV 3 INFO; PALMDALE VORTAC, REV 17 INFO; PARADISE VORTAC, REV 26 INFO; POMONA VORTAC, REV 22; SHAFTER VORTAC, REV 26 INFO; WIJYI, REV 1 INFO; ZALJE, REV 1</p> <p>8260-16 CHANGES: PARADISE VORTAC TO POMONA VORTAC, NO CHANGE;</p> <p>POMONA VORTAC TO HASSA, ADD POMONA VORTAC MCA 5800NW;</p> <p>HASSA TO PALMDALE VORTAC, NO CHANGE;</p> <p>PALMDALE VORTAC TO FISCH, NO CHANGE;</p> <p>FISCH TO KELEN, INCREASE MEA FROM 10000 TO 10200, INCREASE FISCH MCA FROM 8100NW TO 8300NW, INCREASE KELEN MCA FROM 9100SE 9300SE;</p> <p>KELEN TO ARVIN, INCREASE MEA FROM 7800 TO 8500, INCREASE ARVIN MCA FROM 6900SE TO 7300SE;</p> <p>ARVIN TO SHAFTER VORTAC, NO CHANGE.</p> <p>AIRWAY START POINT: N335506.0128/W1173147.9897 (PARADISE (PDZ) VORTAC).</p> <p>CANCEL FDC 6/0270 AND FDC 6/9116 ON CHART DATE</p> <p>CONTACT: LONNIE EVERHART, AJV-543 MANAGER, 405-954-4576</p>						



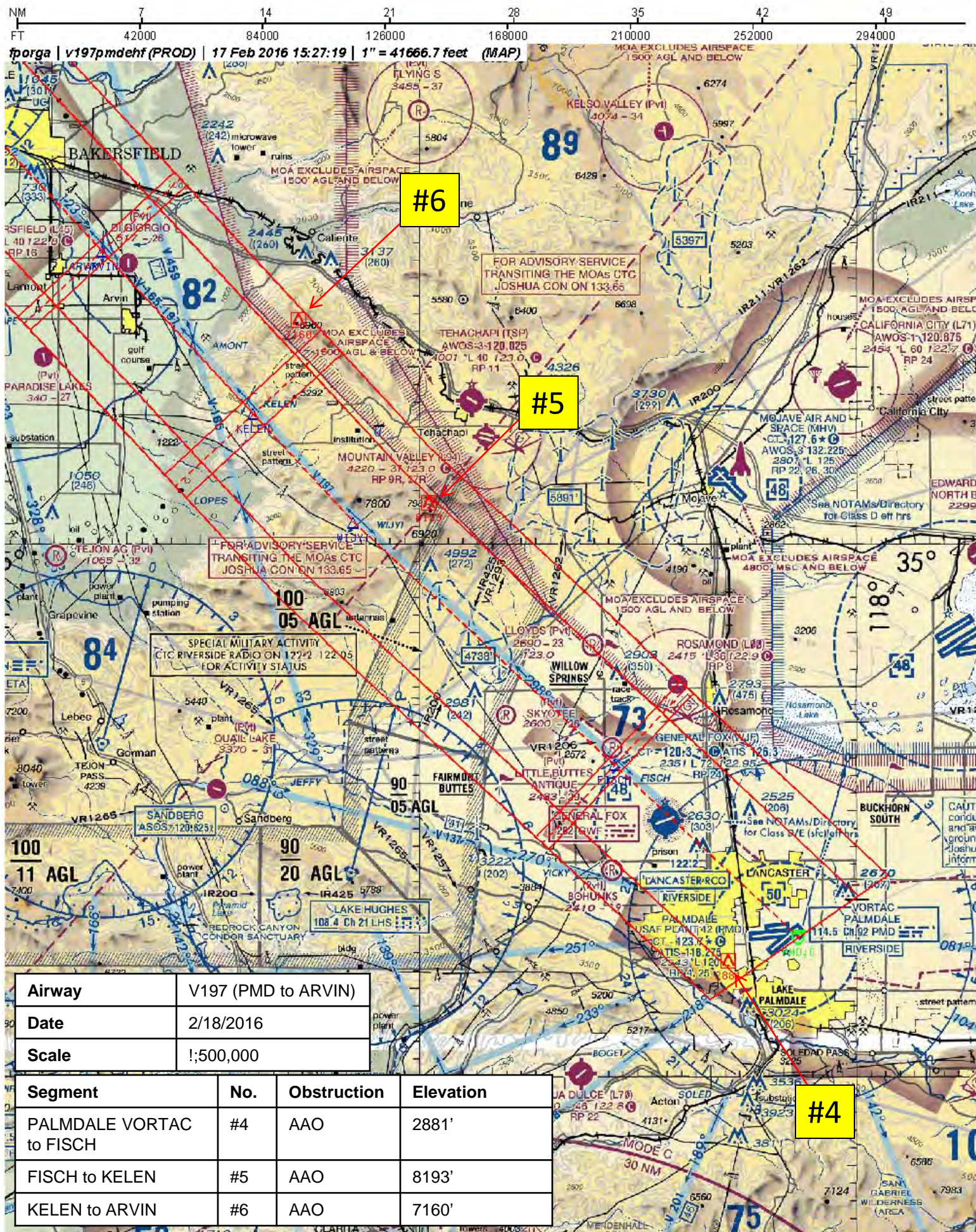














**Airway** V197 (FISCH to EHF)

**Date** 3/30/2016

**Scale** 1:500,000

Segment	No.	Obstruction	Elevation
FISCH to KELEN	#5	AAO	8193'
KELEN to ARVIN	#6	AAO	7160'
ARVIN to SHAFER VORTAC	#7	Tree	1199'

<b>Airway</b>	V197 (FISCH to EHF)
<b>Date</b>	3/30/2016
<b>Scale</b>	1:500,000

Segment	No.	Obstruction	Elevation
FISCH to KELEN	#5	AAO	8193'
KELEN to ARVIN	#6	AAO	7160'
ARVIN to SHAFTER VORTAC	#7	Tree	1199'