

<b>Flight Procedure Tracking Form</b>		<b>Action:</b> FLIGHT CHECK	<b>Task Type:</b> IAP	<b>Date Open:</b> 01/13/2016	<b>Task #:</b> 2014102432675301007	<b>Request #:</b> 20141024326753
<b>Procedure:</b> RNAV (GPS) RWY 22 AMDT 1			<b>Airport ID:</b> KMLS	<b>Airport:</b> FRANK WILEY FIELD		<b>Reimbursable #:</b> NO
<b>City:</b> MILES CITY	<b>ST:</b> MT	<b>GPS #:</b>	<b>Estimated Chart Date:</b> 05/26/2016		<b>FICO #:</b>	
<b>Fac ID:</b> N/A		<b>Fac. Type:</b>			<b>Specialist:</b> FRANK JACKSON	
<b>Procedure Review</b>						
	<b>Rec'd</b>	<b>Rel'd</b>	<b>Full Name</b>	<b>Comments</b>		
<b>Lead:</b>	04/28/2015					
<b>QA:</b>			J ZEDER 02/26/2016 16			
<b>Liaison:</b>						
<b>Procedure Comments:</b>			<b>Remark Type:</b> INFORMATION			
ASSIGNED MAG/VAR: DIGITAL PROCESS KMLS: OLD 12E - NEW 9E. PENDING DATA USED FOR KMLE AIRPORT AND RUNWAYS.  CONTACT: ALLAN WILL/JOHNNIE BAKER, AJV-5430 LEAD, 405.954.6103/5148.						

coding ckd sat  
ari moved

QUALITY  
12  
CHECKED

WAAS CH <b>77924</b> <b>W22A</b>	APP CRS <b>223°</b>	Rwy Idg TDZE Apt Elev	<b>5680</b> <b>2628</b> <b>2630</b>
--	------------------------	-----------------------------	---

RNAV (GPS) RWY 22

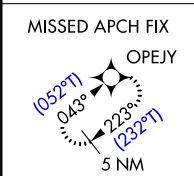
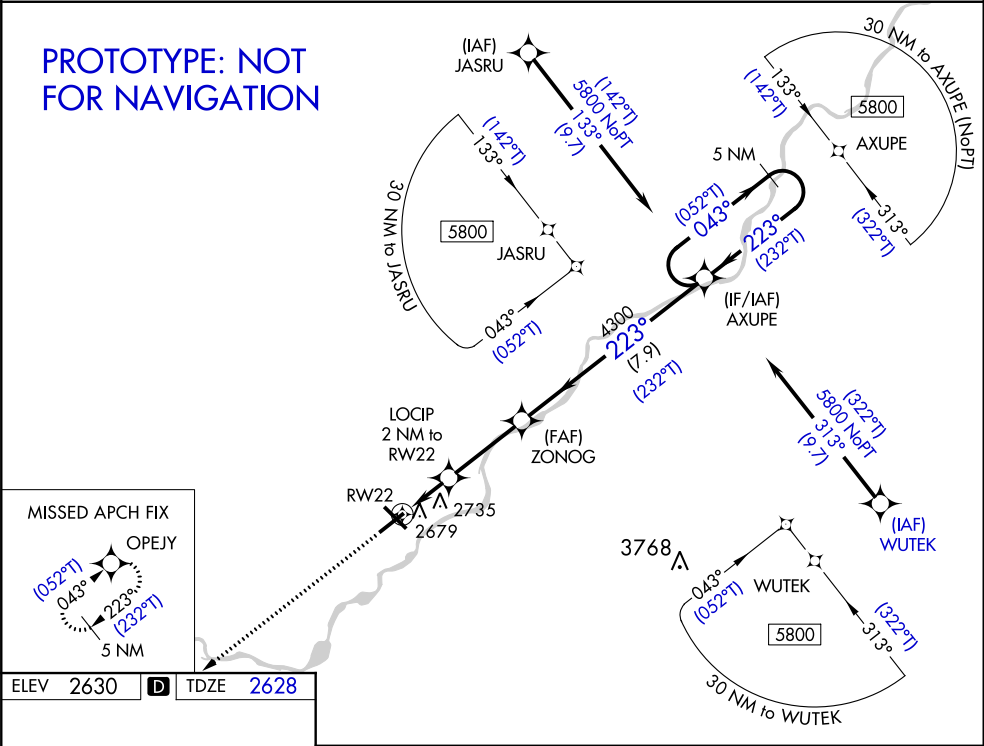
FRANK WILEY FIELD (MLS)

⚠ For uncompensated Baro-VNAV systems, LNAV/VNAV NA below -24C (-11F) or above 54C (130F). Baro-VNAV and VDP NA when using Forsyth altimeter setting. DME/DME RNP-0.3 NA. When local altimeter setting not received, use Forsyth altimeter setting; increase LPV DA to 2966 and LNAV/VNAV DA to 2980 and all visibilities 1/8 mile. Increase all MDA 100ft and LNAV Cat C and D visibility 3/8 mile and circling Cat d 1/4 mile.

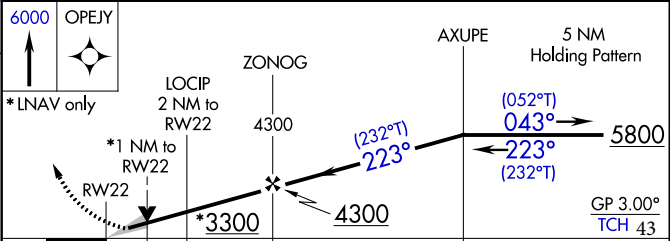
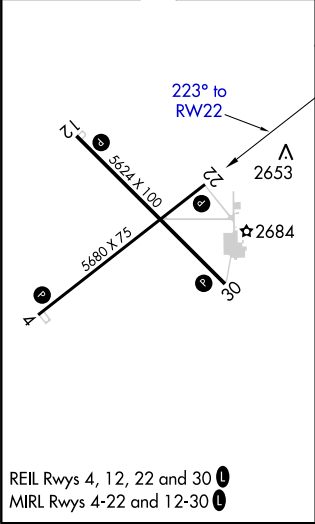
MISSED APPROACH: Climb to 6000 direct OPEJY and hold, continue climb-in-hold to 6000.

ASOS <b>135.575</b>	GREAT FALLS RADIO <b>122.2 255.4</b>	UNICOM <b>123.0 (CTAF) 0</b>
------------------------	---	---------------------------------

PROTOTYPE: NOT FOR NAVIGATION



ELEV 2630	<b>D</b>	TDZE 2628
-----------	----------	-----------



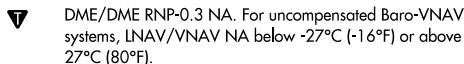
CATEGORY	A	B	C	D
LPV DA		2878-1	250 (300-1)	
LNAV/VNAV DA		2892-1	264 (300-1)	
LNAV MDA		3000-1	372 (400-1)	
<b>C</b> CIRCLING	3060-1 430 (400-1)	3100-1 470 (500-1)	3120-1½ 490 (500-1½)	3320-2¼ 690 (700-2¼)

15288

Rwy Idg	<b>5680</b>
TDZE	<b>2629</b>
Apt Elev	<b>2630</b>

OLD

RNAV (GPS) RWY 22  
FRANK WILEY FIELD (MLS)

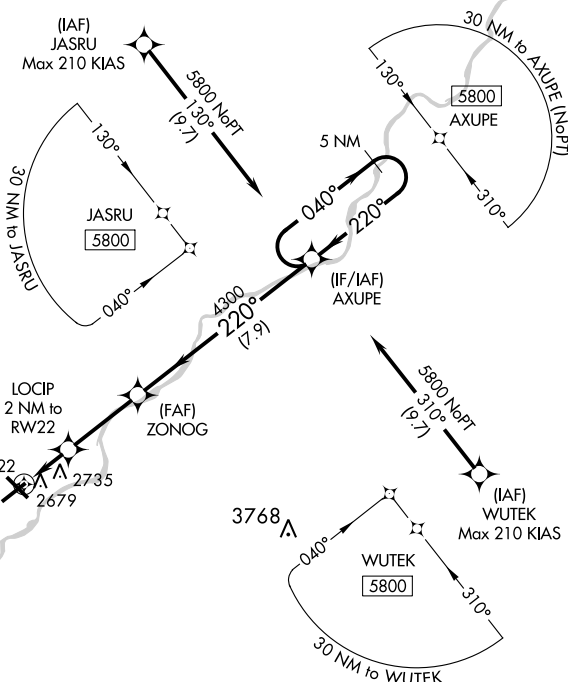


MISSED APPROACH: Climb to 5400  
direct OPEJY and hold.

ASOS  
135.575

GREAT FALLS RADIO  
122.2 255.4

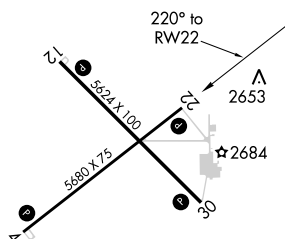
UNICOM  
123.0 (CTAF) **L**



MISSED APCH FIX



ELEV	2630	<b>D</b>	TDZE	2629
------	------	----------	------	------



5400 OPEJY

VGSI and RNAV glidepath not coincident.  
(VGSI Angle 3.00/TCH 43)

AXUPE

5 NM Holding Pattern

\*LNAV only

LOCIP 2 NM to RW22

ZONOG

4300

040° →

← 220°

5800

\*1 NM to RW22

RW22

3300\*

4300

GP 3.00°  
TCH 37

1 NM 1 NM 3.1 NM 7.9 NM

CATEGORY	A	B	C	D
LPV DA		2879-7 <sub>8</sub>	250 (300-7 <sub>8</sub> )	
LNAV/VNAV DA		2893-7 <sub>8</sub>	264 (300-7 <sub>8</sub> )	
LNAV MDA		3000-1	371 (400-1)	
CIRCLING	3060-1 430 (400-1)	3080-1 450 (500-1)	3080-1½ 450 (500-1½)	3180-2 550 (600-2)

REIL Rwy 4, 12, 22 and 30 **L**

Orig-C 15OCT15

Orig-C 15OCT15

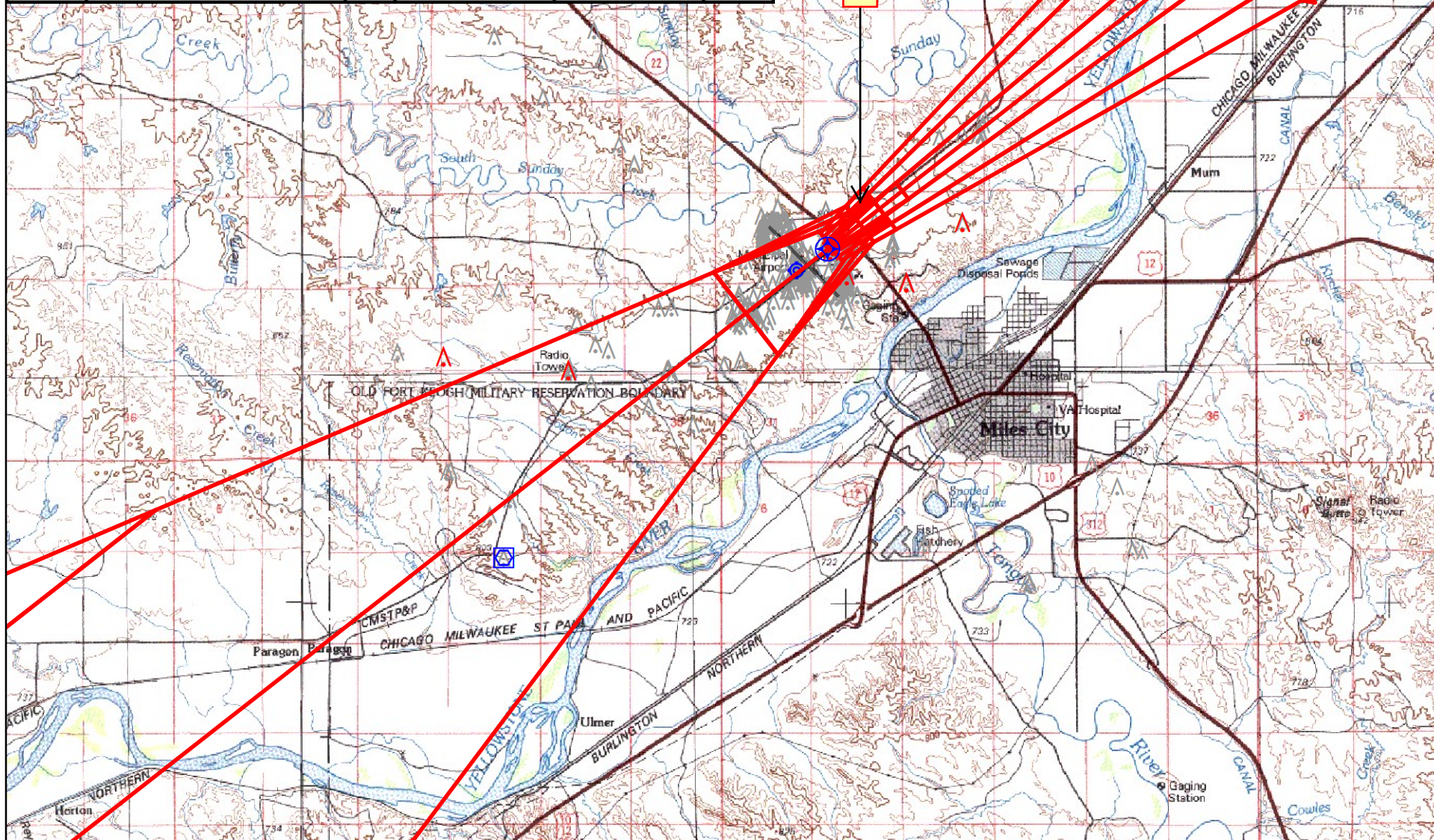
46°26'N-105°53'W

FRANK WILEY FIELD (MLS)  
RNAV (GPS) RWY 22

NW-1, 07 JAN 2016 to 04 FEB 2016

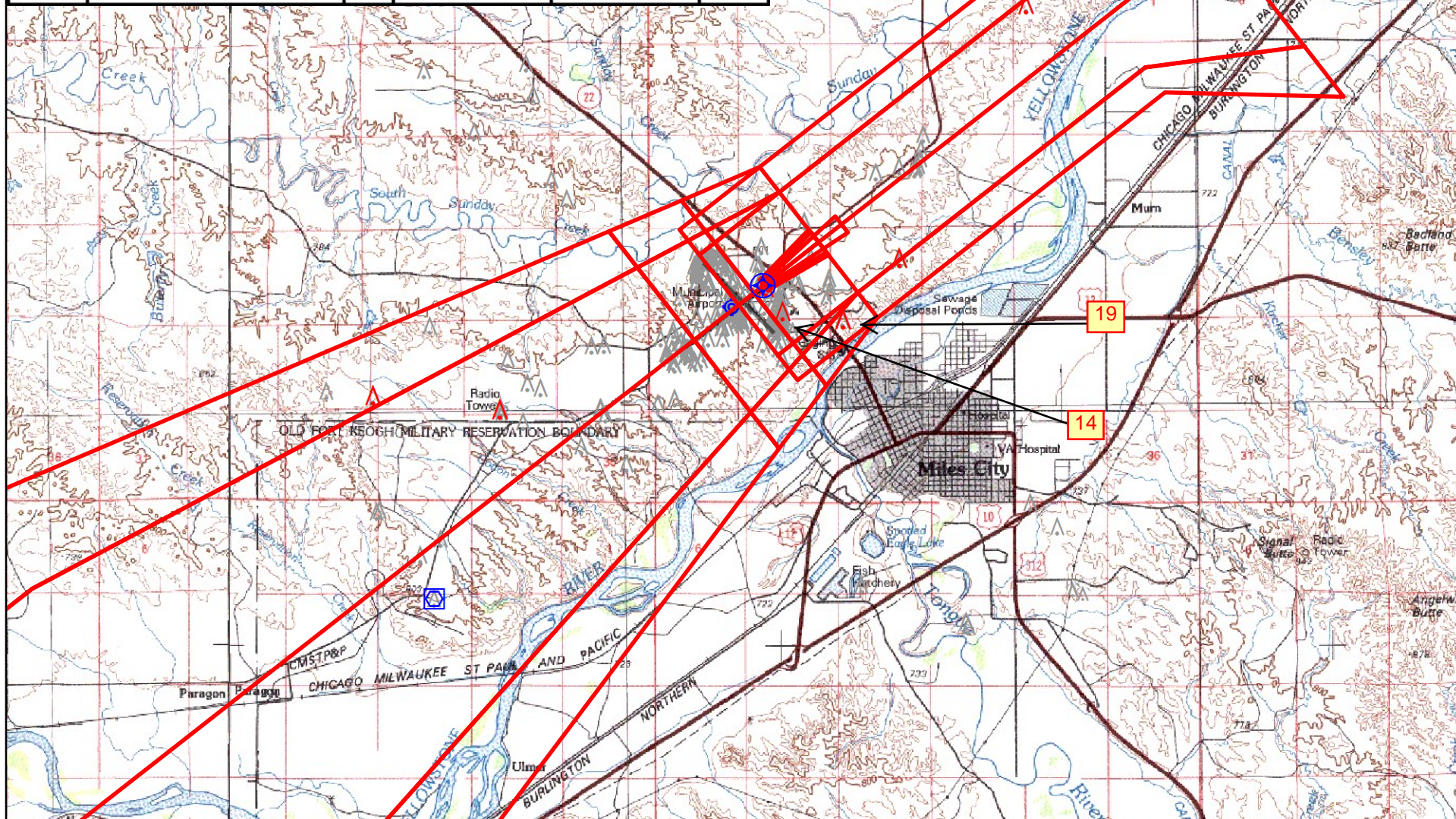


Airport ID:	KMLS	FM 9			
Apt Name:	FRANK WILEY FIELD	No	SEGMENT	OBSTRUCTION	ELEV
City:	MILES CITY	13	LPV FINAL	ROAD	2643
State:	MT				
Proc ID:	RNAV (GPS) RWY 22				
Amdt #	1				
Scale:	1: 100,000				



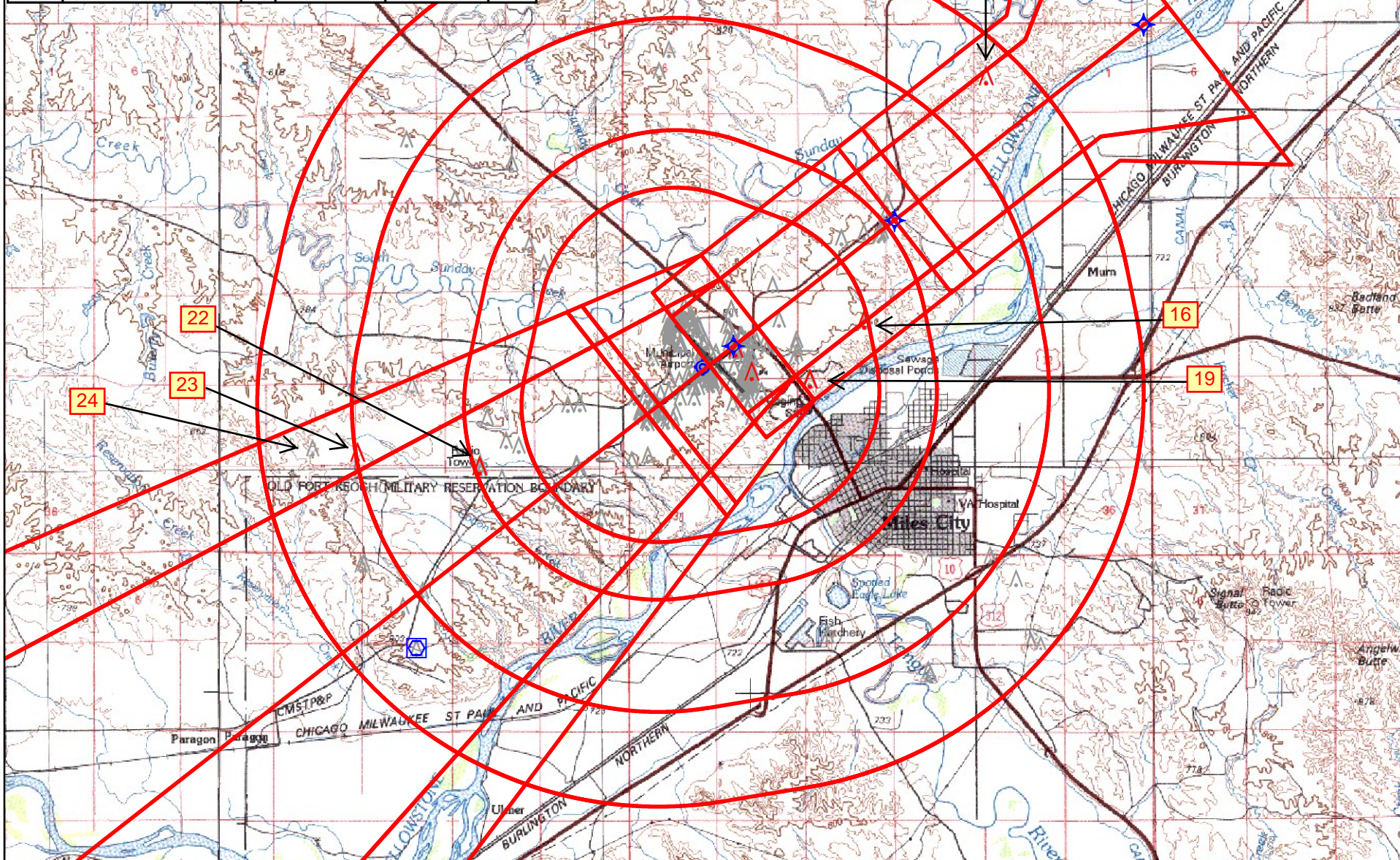


Airport ID:	KMLS	FM 9			
Apt Name:	FRANK WILEY FIELD	No	SEGMENT	OBSTRUCTION	ELEV
City:	MILES CITY	14	LNAV/VNAV FINAL	TOWER	2702
State:	MT	19	LNAV/VNAV MISSED ADJUSTMENT	TOWER	2755
Proc ID:	RNAV (GPS) RWY 22				
Amdt #	1				
Scale:	1:100,000				



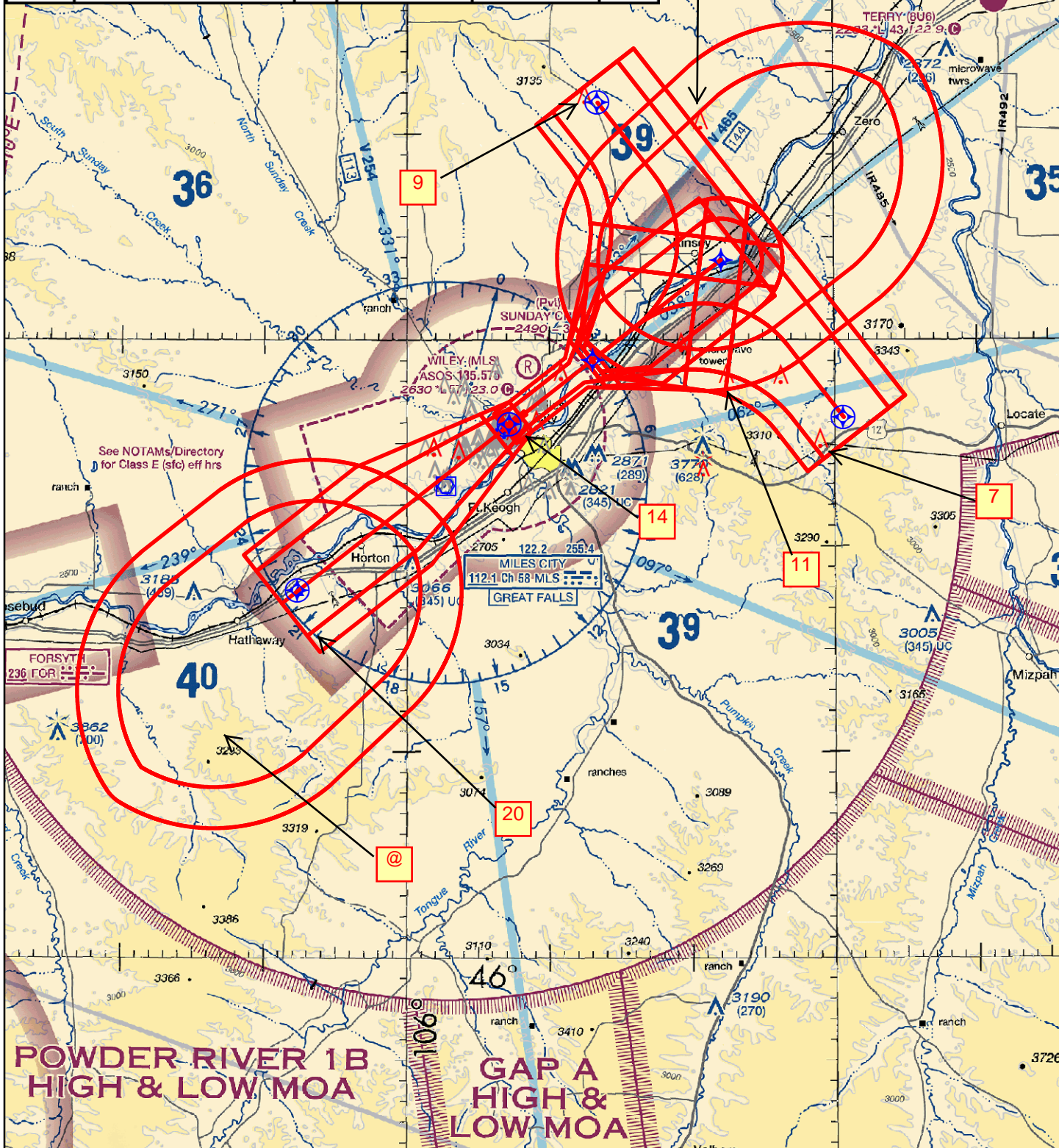


Airport ID:	KMLS	FM 9			
Apt Name:	FRANK WILEY FIELD	No	SEGMENT	OBSTRUCTION	ELEV
City:	MILES CITY	15	LNAV FINAL	200' AAO	2800
State:	MT	16	LNAV STEPDOWN	VERTICAL STRUCTURE	2736
Proc ID:	RNAV (GPS) RWY 22	19	CIRCLING CAT A	TOWER	2755
Amdt #	1	22	CIRCLING CAT B	NAV ANT	2794
Scale:	1: 100,000	23	CIRCLING CAT C	30' TREE	2809
		24	CIRCLING CAT D	200' AAO	3020

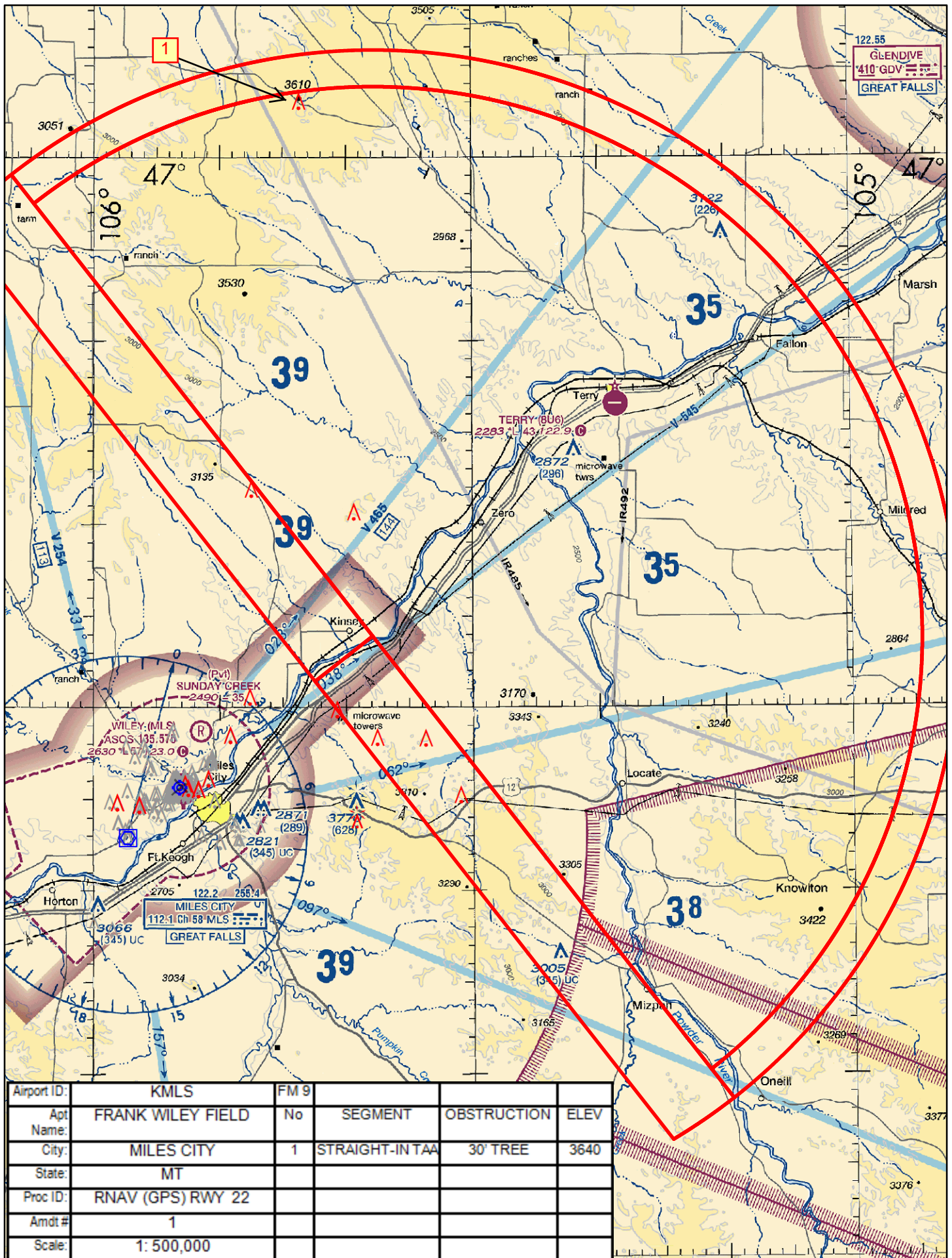




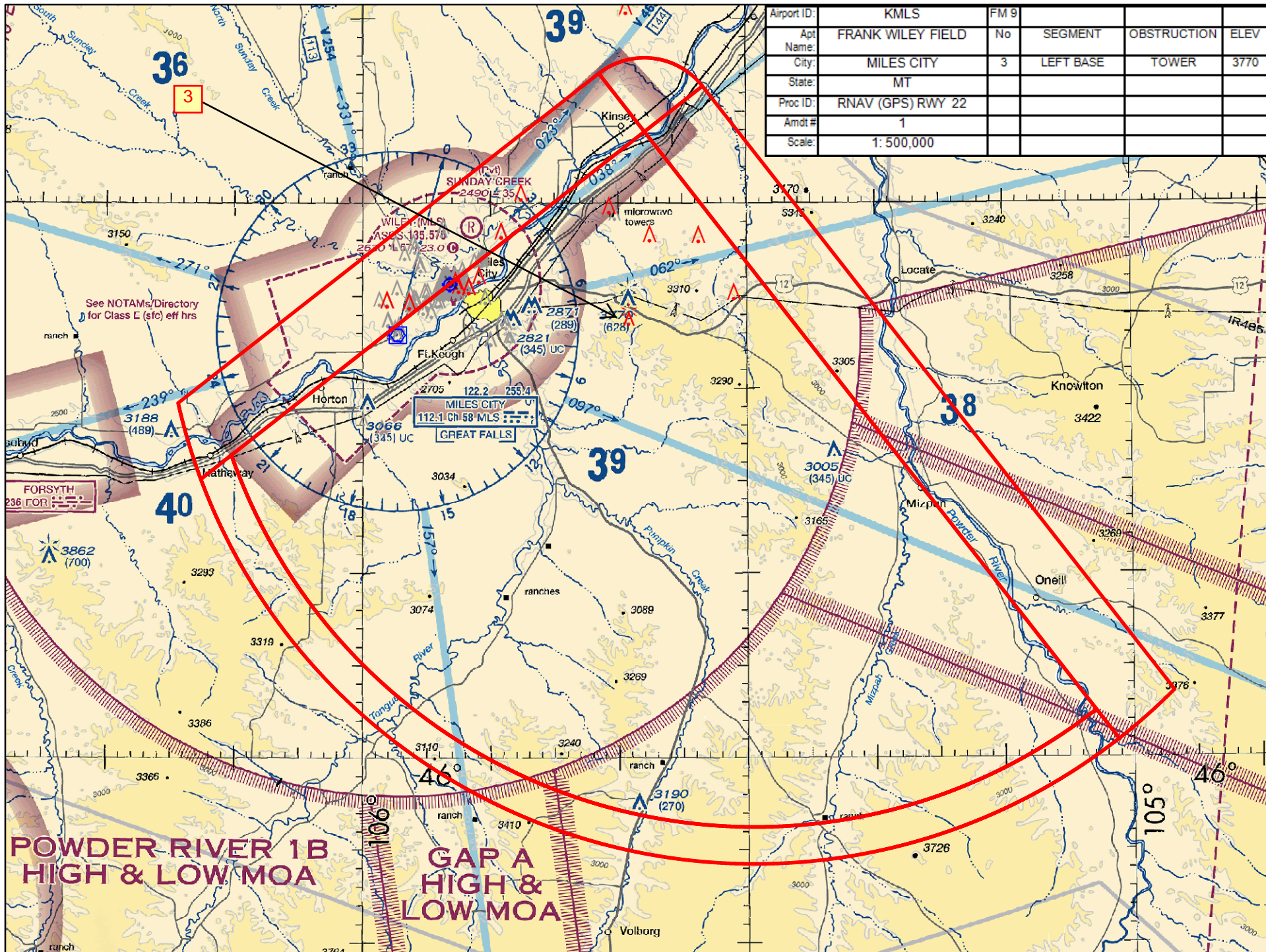
Airport ID:	KMLS	FM 9			
Apt Name:	FRANK WILEY FIELD	No	SEGMENT	OBSTRUCTION	ELEV
City:	MILES CITY	7	WUTЕК INITIAL	200' AAO	3445
State:	MT	9	JASRU INITIAL	200' AAO	3173
Proc ID:	RNAV (GPS) RWY 22	11	INTERMEDIATE	200' AAO	3068
Amdt #	1	17	HOLD-IN-LIEU	200' AAO	3304
Scale:	1: 500,000	@	OPEJY HOLDING	200' AAO	3547
		20	MISSED	200' AAO	3101
		14	LNAV/VNAV FINAL	TOWER	2702



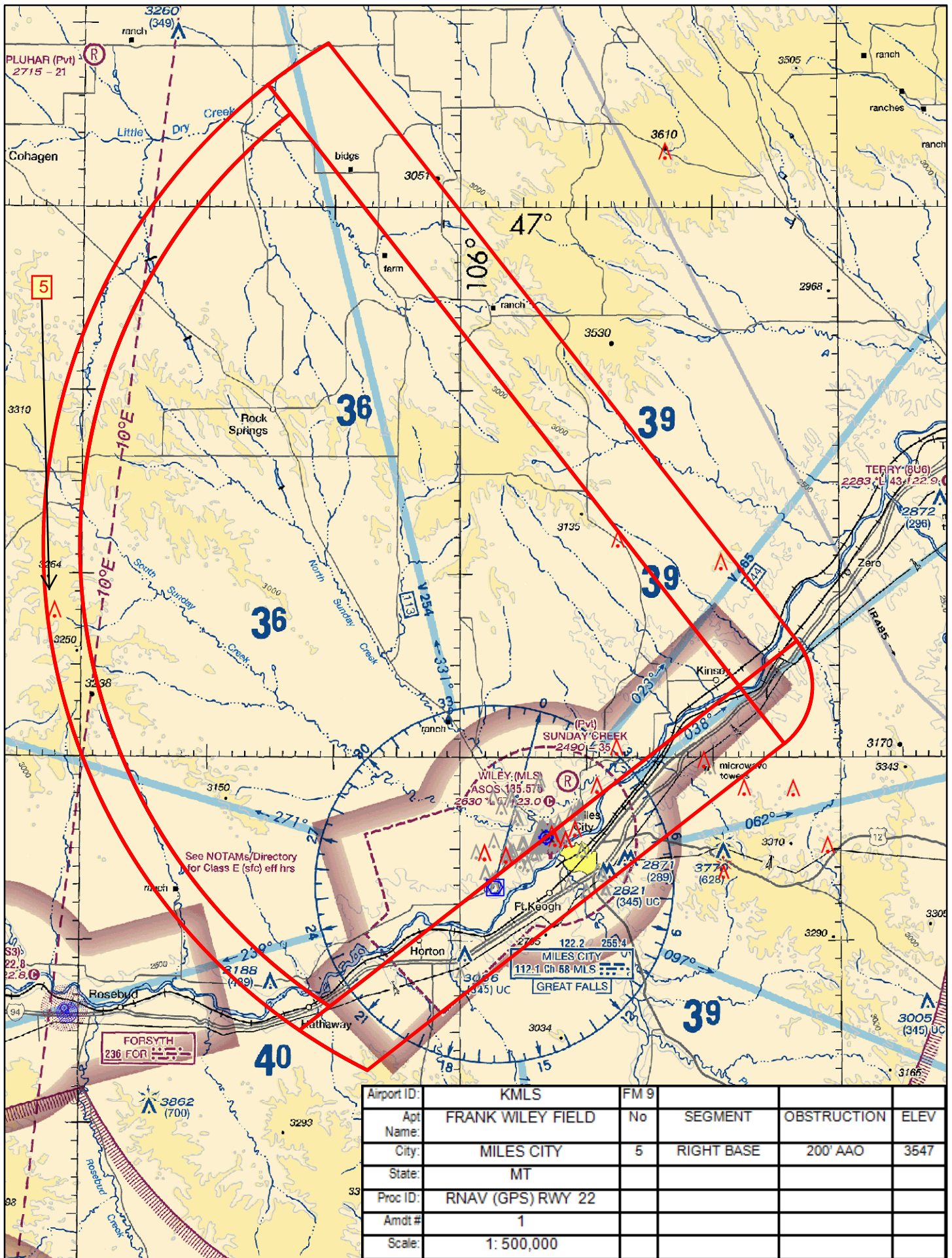




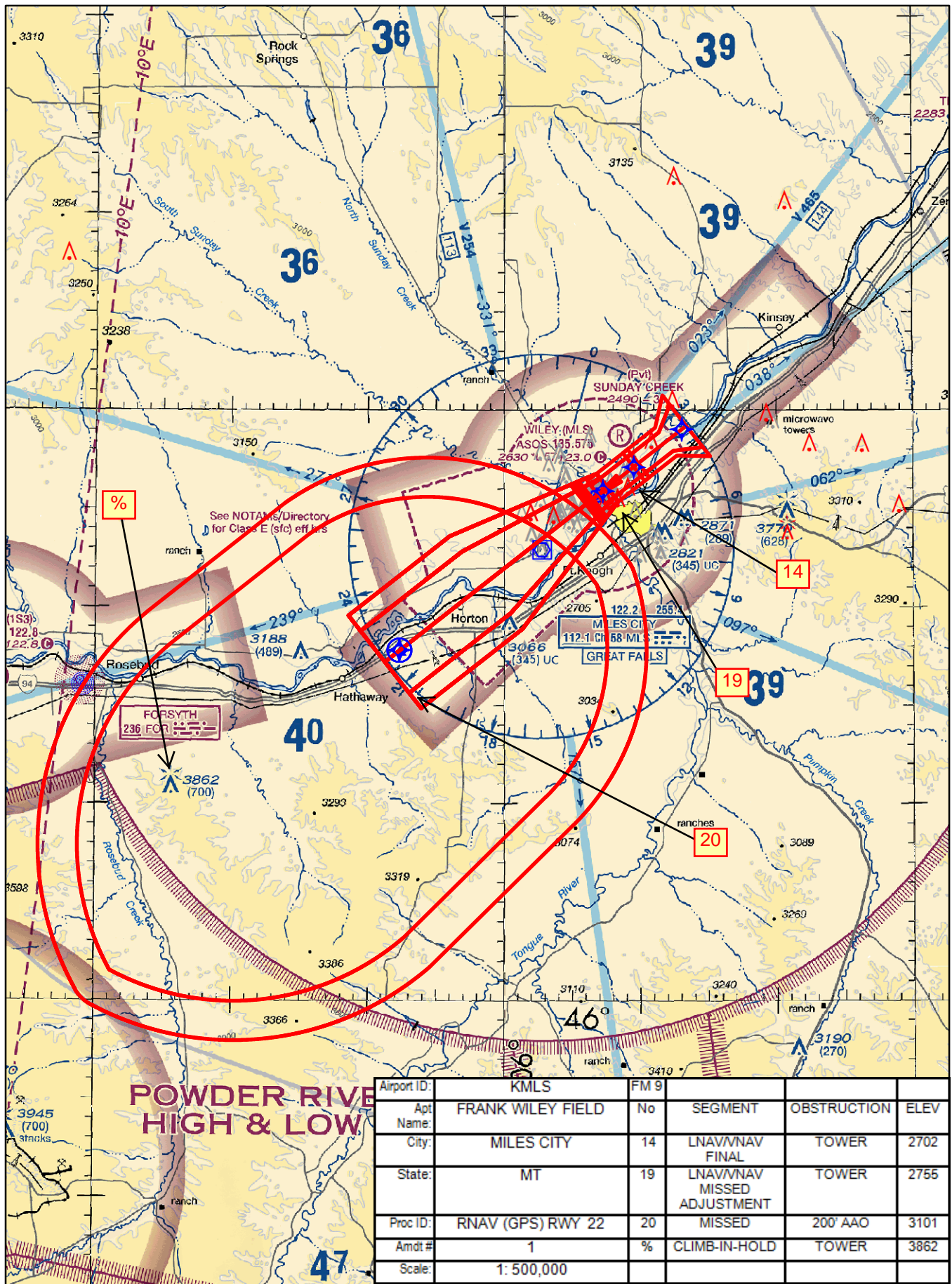












# TERMINAL AIRSPACE DATA REQUIREMENTS

CITY: **MILES CITY**

STATE: **MT**

AIRPORT NAME: **FRANK WILEY FIELD**

ID: **KMLS**

PROCEDURE: **RNAV (GPS) RWY 22**

AMDT: **1**

DOCKET#: **NOT REQUIRED**

(96-AXX-X/Required/Not Required)

**ALL DIST TO 1/100 NM; ELEV TO NEAREST FT; COORD TO 1/100 SEC; DEG TO 1/100 DG.**

- |   |                                 |                                |               |
|---|---------------------------------|--------------------------------|---------------|
| 1. Distance from  | <u>THLD</u>                     | to 1000' point                 | <u>2.92</u>   |
| <small>(Enter THLD, FAF, ARP, FACILITY, as appropriate)</small>                           |                                 |                                |               |
| 2. Width of   | <u>FINAL</u>                    | segment at 1000' point         | <u>1.20</u>   |
| <small>(Enter appropriate segment, final, intermediate, etc.)</small>                     |                                 |                                |               |
| 3. True Course of   | <u>FINAL</u>                    | segment containing 1000' point | <u>232.00</u> |
| 4. High Terrain in  | <u>FINAL</u>                    | segment containing 1000' point | <u>2627</u>   |
| 5. Distance from  | <u>THLD</u>                     | to 1500' point                 | <u>4.72</u>   |
| <small>(If 1500' point in PT maneuvering area or holding pattern note in remarks)</small> |                                 |                                |               |
| 6. Width of   | <u>FINAL</u>                    | segment at 1500' point         | <u>1.76</u>   |
| 7. True Course of   | <u>FINAL</u>                    | segment containing 1500' point | <u>232.00</u> |
| 8. High Terrain in  | <u>FINAL</u>                    | segment containing 1500' point | <u>2627</u>   |
| 9. Threshold Coordinates (if straight-in) ...   | <u>462552.76N / 1055244.06W</u> |                                |               |
| 10. ARP Coordinates .....   | <u>462540.70N / 1055310.40W</u> |                                |               |
| 11. Runway Approach End and distance furthest from ARP .....                              | RWY                             | <u>4</u>                       |               |
|   | Distance                        | <u>0.57</u>                    | NM            |
| 12. FAF Coordinates .....   | <u>462902.04N / 1054653.93W</u> |                                |               |

## REMARKS: Approach/Drawing attached.

TAA: AXUPE 463352.59N/1053754.10W (IAF) RADIUS 30NM

TAA: WUTEK 462613.10N/1052917.33W RADIUS 30NM

TAA: JASRU 464131.42N/1054633.30W RADIUS 30NM