

Flight Procedure Tracking Form		Action: FLIGHT CHECK	Task Type: IAP	Date Open: 10/24/2014	Task #: 2014102432675301002	Request #: 20141024326753
Procedure: RNAV (GPS) RWY 31 ORIG			Airport ID: KMLS	Airport: FRANK WILEY FIELD		Reimbursable #: NO
City: MILES CITY	ST: MT	GPS #:	Estimated Chart Date: 05/26/2016		FICO #:	
Fac ID: N/A		Fac. Type:			Specialist: FRANK JACKSON	
Procedure Review						
	Rec'd	Rel'd	Full Name	Comments		
Lead:	04/28/2015					
QA:			J ZEDER 02/26/2016 16			
Liaison:						
Procedure Comments:			Remark Type: INFORMATION			
ASSIGNED MAG VAR: DIGITAL PROCESS KMLS: OLD 12E - NEW 9E. PENDING DATA USED FOR KMLS AIRPORT AND RUNWAYS. CONTACT: ALLAN WILL/JOHNNIE BAKER, AJV-5430 LEAD, 405.954.6103/5148.						

coding ckd sat
.ari moved

QUALITY
12
CHECKED

WAAS CH 56240 W31A	APP CRS 306°	Rwy Idg TDZE Apt Elev	5628 2627 2630
--	------------------------	-----------------------------	---

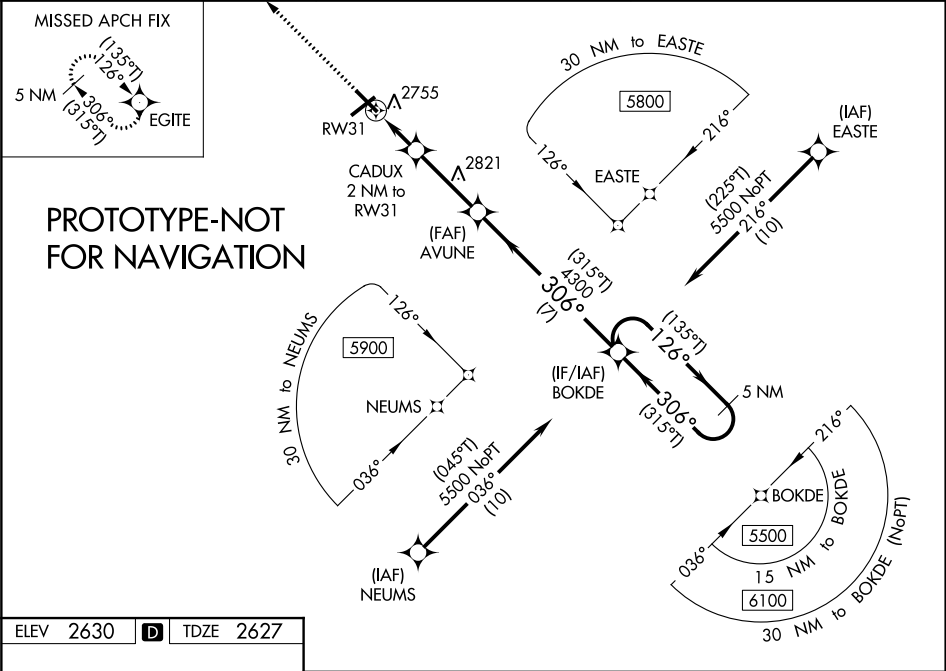
RNAV (GPS) RWY 31

FRANK WILEY FIELD (MLS)

⚠ For uncompensated Baro-VNAV systems, LNAV/VNAV NA below -24°C (-11°F) or above 54°C (130°F).Baro-VNAV and VDP NA when using Forsyth altimeter setting. DME/DME RNP-0.3 NA. When local altimeter setting not received, use Forsyth altimeter setting; increase LPV DA to 2965 and all visibility ¼ mile, and increase LNAV/VNAV DA to 3005 and all visibility ¼ mile. Increase all MDA 100 feet and all Cat C and D visibility ¼ mile.

MISSED APPROACH: Climb to 6000 direct EGITE and hold, continue climb-in-hold to 6000.

ASOS 135.575	GREAT FALLS RADIO 122.2 255.4	UNICOM 122.9 (CTAF)
------------------------	---	-------------------------------



ELEV 2630 TDZE 2627

MIRL Rwys 4-22 and 13-31

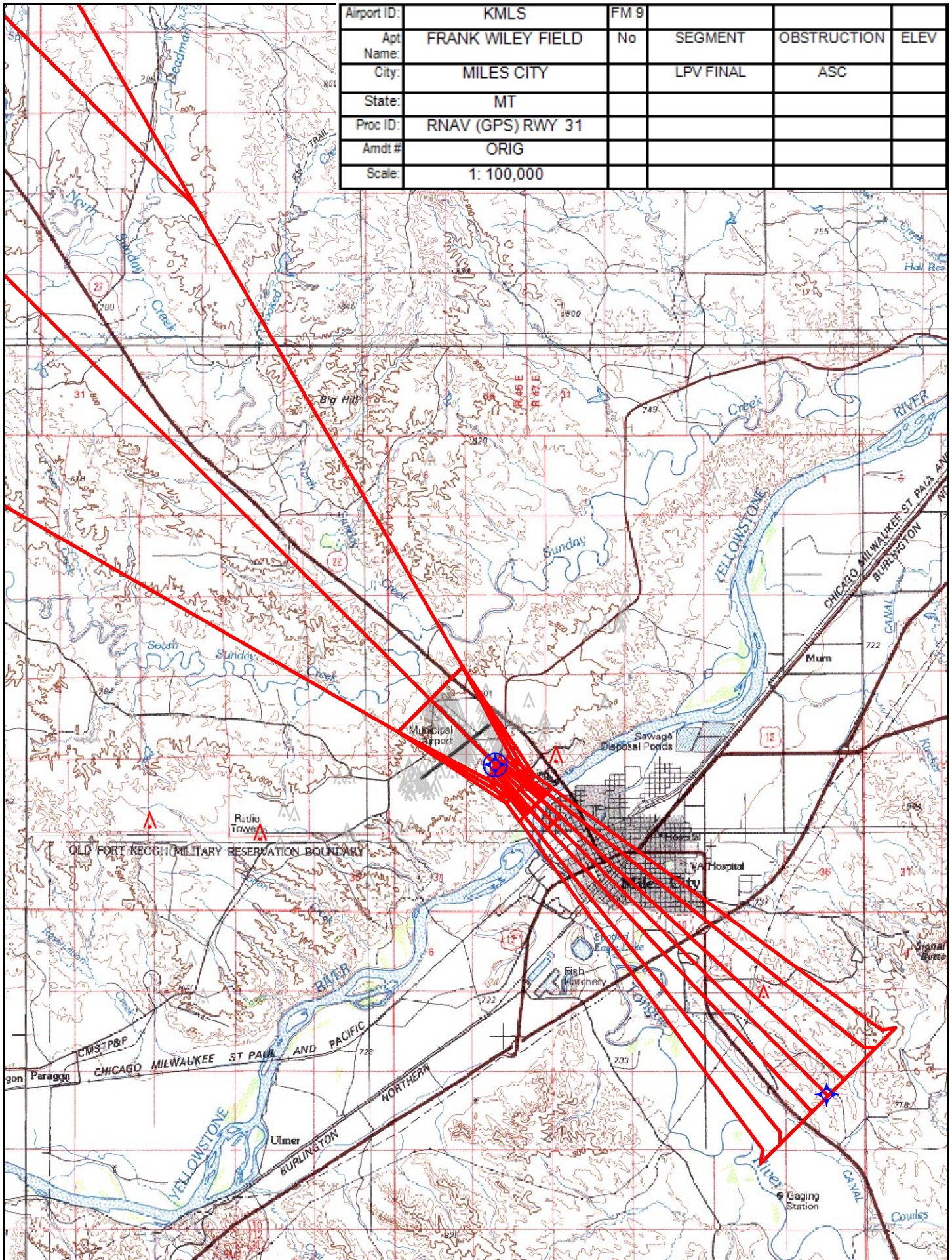
REIL Rwys 4, 13, 22, and 31

6000

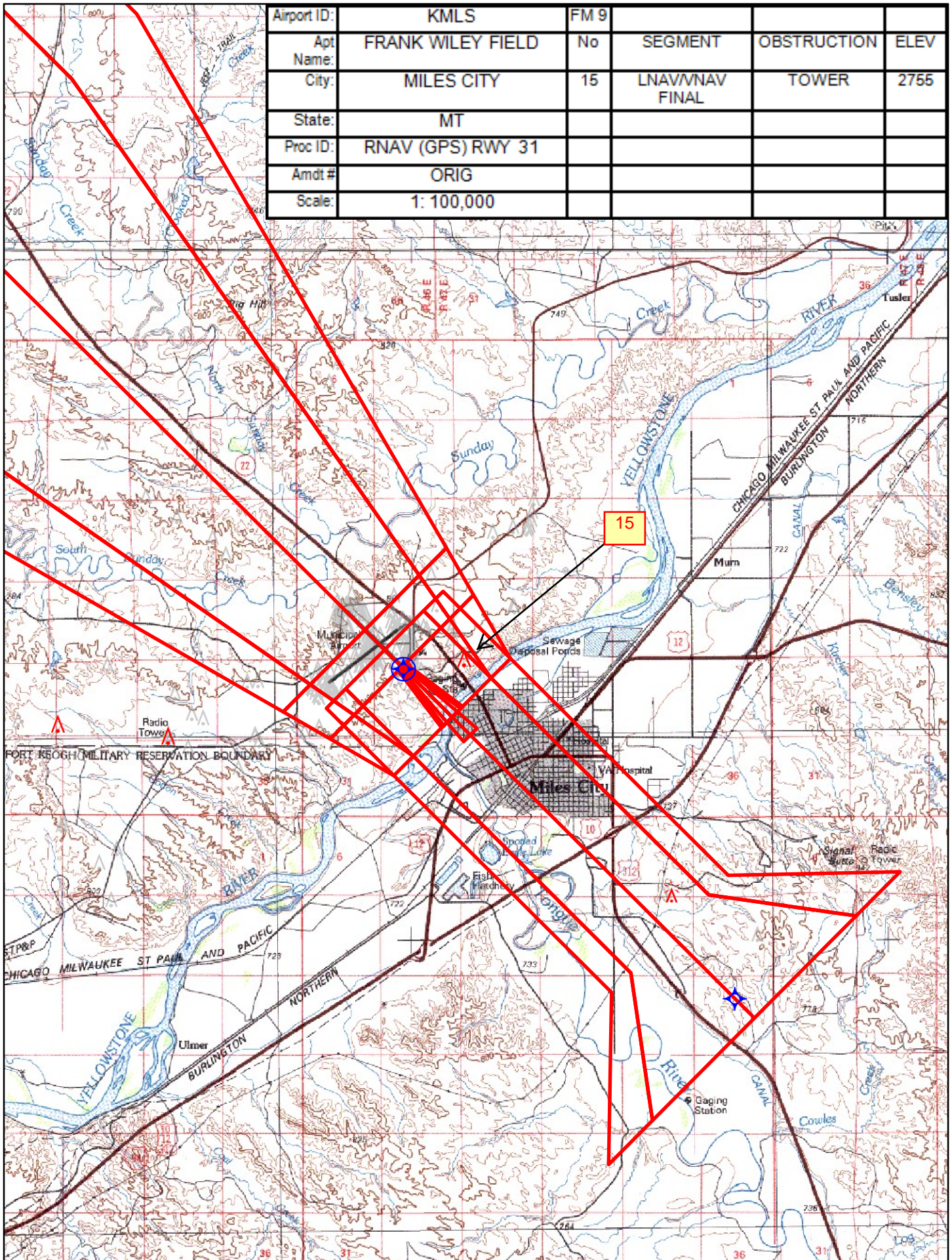
*LNAV only

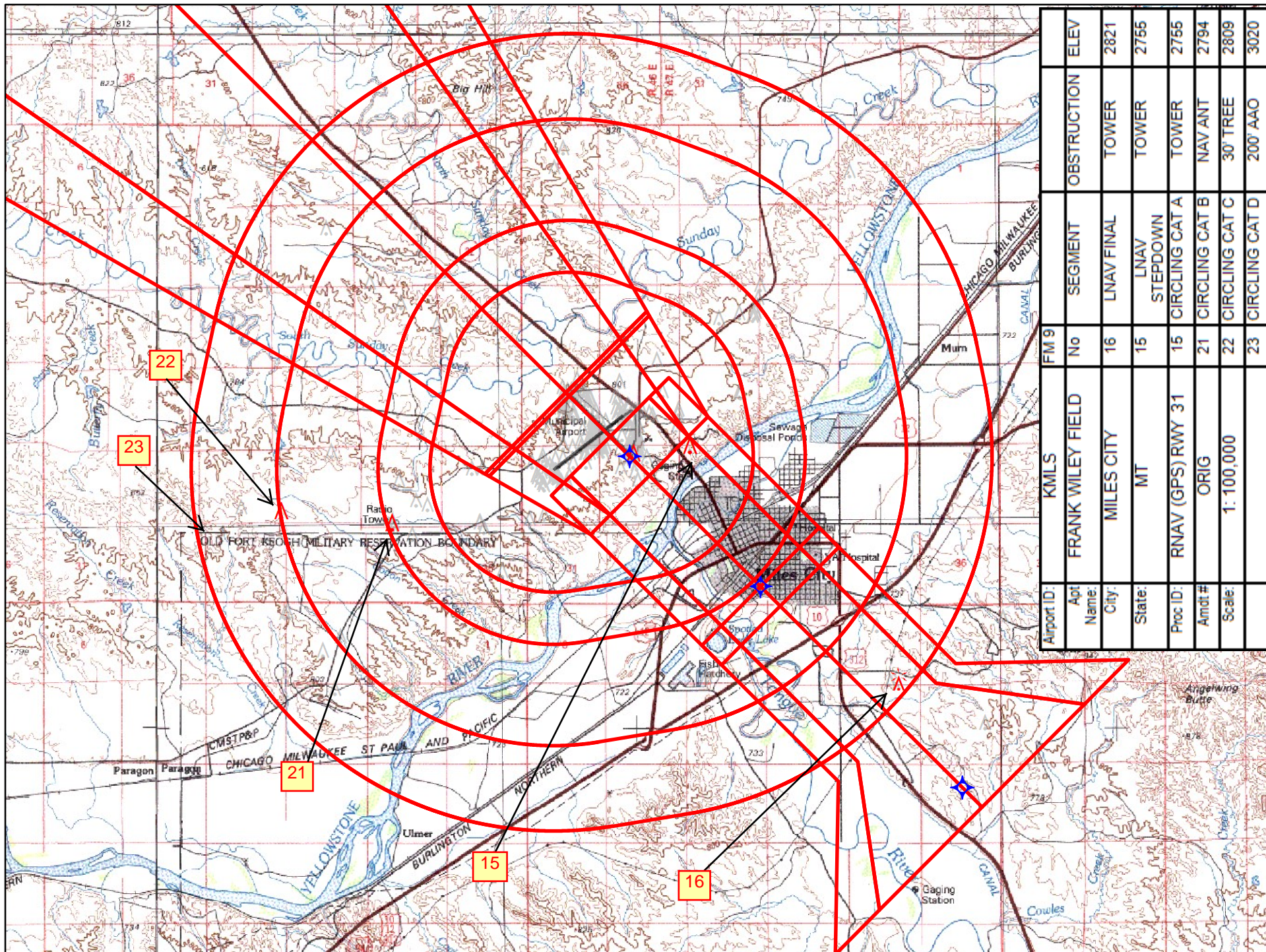
CATEGORY	A	B	C	D
LPV DA	2877-1 250 (300-1)			
LNAV/VNAV DA	2917-1 290 (300-1)			
LNAV MDA	3020-1 393 (400-1)		3020-1½ 393 (400-1½)	
CIRCLING	3060-1 430 (500-1)	3100-1 470 (500-1)	3120-1½ 490 (500-1½)	3320-2¼ 690 (700-2¼)

Airport ID:	KMLS	FM 9			
Apt Name:	FRANK WILEY FIELD	No	SEGMENT	OBSTRUCTION	ELEV
City:	MILES CITY		LPV FINAL	ASC	
State:	MT				
Proc ID:	RNAV (GPS) RWY 31				
Amdt #	ORIG				
Scale:	1: 100,000				

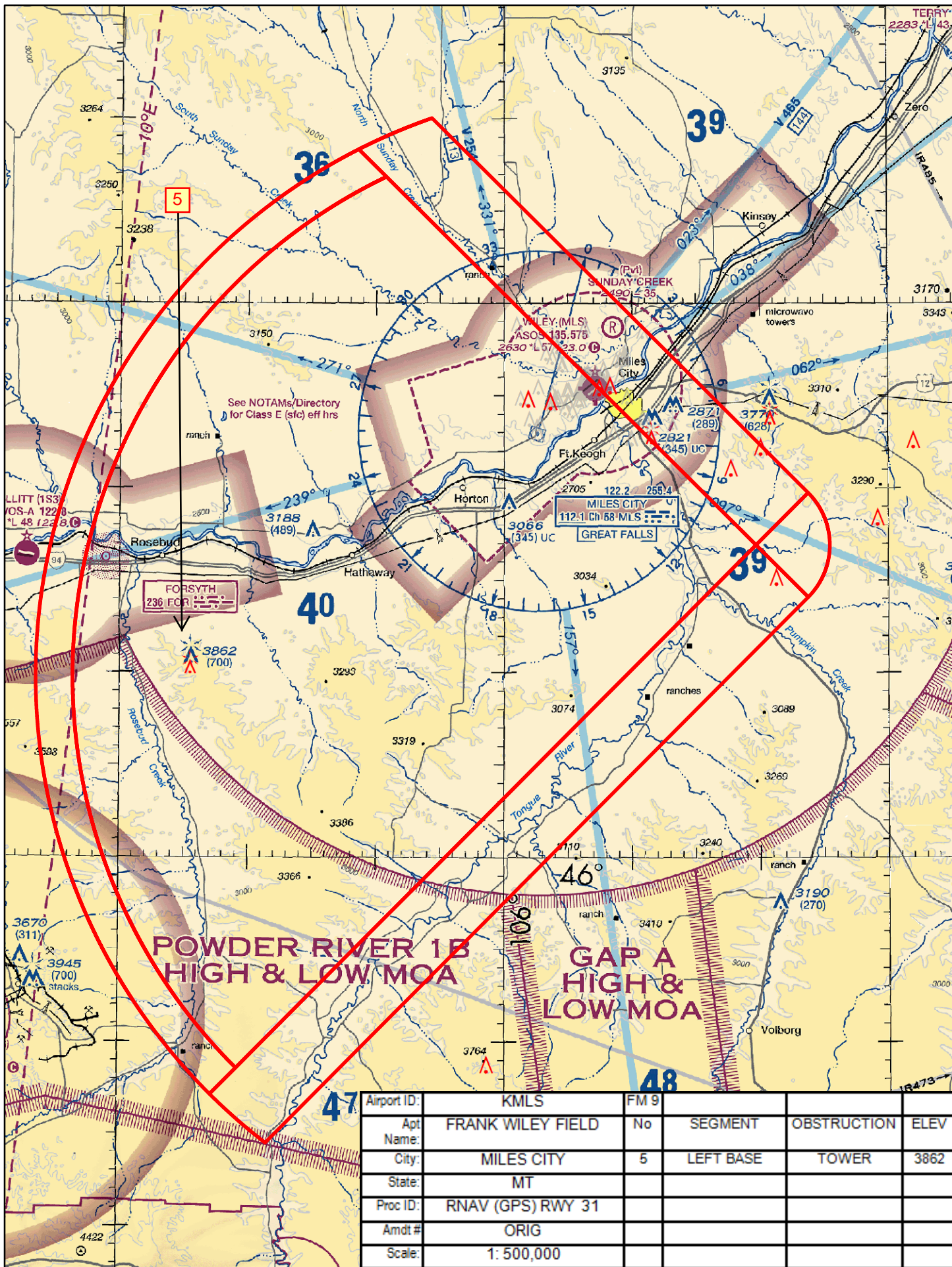


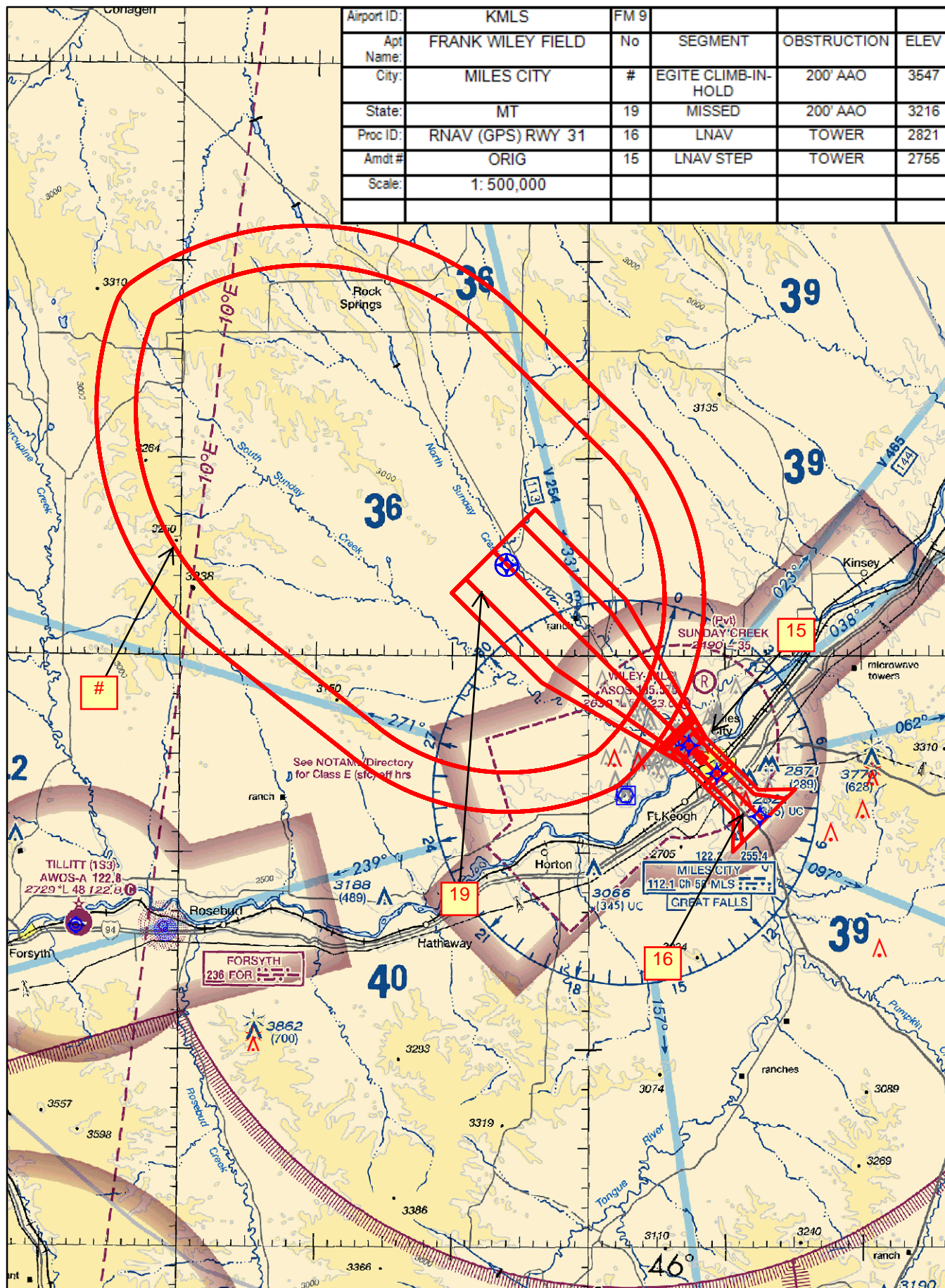
Airport ID:	KMLS	FM 9			
Apt Name:	FRANK WILEY FIELD	No	SEGMENT	OBSTRUCTION	ELEV
City:	MILES CITY	15	LNAV/VNAV FINAL	TOWER	2755
State:	MT				
Proc ID:	RNAV (GPS) RWY 31				
Amdt #	ORIG				
Scale:	1: 100,000				





Obstruction ID	Obstruction Name	Obstruction Type	Obstruction Elevation
15	Obstruction 15	TOWER	2821
16	Obstruction 16	TOWER	2755
21	Obstruction 21	TOWER	2755
22	Obstruction 22	NAV ANT	2794
23	Obstruction 23	30' TREE	2809
		200' AAO	3020





TERMINAL AIRSPACE DATA REQUIREMENTS

CITY: **MILES CITY**

STATE: **MT**

AIRPORT NAME: **FRANK WILEY FIELD**

ID: **KMLS**

PROCEDURE: **RNAV (GPS) RWY 31**

AMDT: **ORIG**

DOCKET#: **NOT REQUIRED**

(96-AXX-X/Required/Not Required)

ALL DIST TO 1/100 NM; ELEV TO NEAREST FT; COORD TO 1/100 SEC; DEG TO 1/100 DG.

- | | | | |
|---|---------------------------------|--------------------------------|---------------|
| 1. Distance from | <u>THLD</u> | to 1000' point | <u>3.24</u> |
| <small>(Enter THLD, FAF, ARP, FACILITY, as appropriate)</small> | | | |
| 2. Width of | <u>FINAL</u> | segment at 1000' point | <u>1.20</u> |
| <small>(Enter appropriate segment, final, intermediate, etc.)</small> | | | |
| 3. True Course of | <u>FINAL</u> | segment containing 1000' point | <u>314.95</u> |
| 4. High Terrain in | <u>FINAL</u> | segment containing 1000' point | <u>2660</u> |
| 5. Distance from | <u>THLD</u> | to 1500' point | <u>4.92</u> |
| <small>(If 1500' point in PT maneuvering area or holding pattern note in remarks)</small> | | | |
| 6. Width of | <u>FINAL</u> | segment at 1500' point | <u>1.95</u> |
| 7. True Course of | <u>FINAL</u> | segment containing 1500' point | <u>314.95</u> |
| 8. High Terrain in | <u>FINAL</u> | segment containing 1500' point | <u>2660</u> |
| 9. Threshold Coordinates (if straight-in) ... | <u>462526.35N / 1055236.45W</u> | | |
| 10. ARP Coordinates | <u>462540.70N / 1055310.40W</u> | | |
| 11. Runway Approach End and distance furthest from ARP | RWY | <u>4</u> | |
| | Distance | <u>0.57</u> | NM |
| 12. FAF Coordinates | <u>462149.41N / 1054722.06W</u> | | |

REMARKS: Approach/Drawing attached.

TAA: BOKDE 461654.15N/1054015.82W (IAF) RADIUS 30NM

TAA: EASTE 462357.52N/1053002.38W RADIUS 30NM

TAA: NEUMS 460949.85N/1055026.64W RADIUS 30NM