

WAAS CH <b>56240</b> <b>W31A</b>	APP CRS <b>306°</b>	Rwy Idg TDZE Apt Elev	<b>5628</b> <b>2627</b> <b>2630</b>
--	------------------------	-----------------------------	---

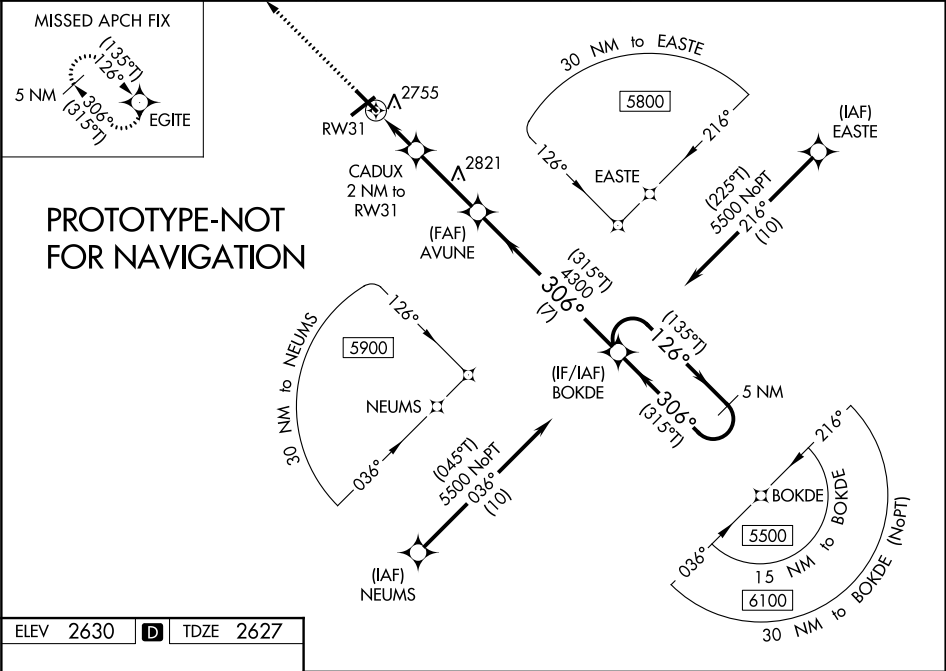
RNAV (GPS) RWY 31

FRANK WILEY FIELD (MLS)

⚠ For uncompensated Baro-VNAV systems, LNAV/VNAV NA below -23°C (-9°F) or above 27°C (81°F). Baro-VNAV and VDP NA when using Forsyth altimeter setting. DME/DME RNP-0.3 NA. When local altimeter setting not received, use Forsyth altimeter setting; increase LPV DA to 2965 and all visibilities ¼ mile, and increase LNAV/VNAV DA to 3005 and all visibilities ¼ mile. Increase all MDA 100 feet and all Cat C and D visibilities ¼ mile.

MISSED APPROACH: Climb to 6000 direct EGTE and hold, continue climb-in-hold to 6000.

ASOS <b>135.575</b>	GREAT FALLS RADIO <b>122.2 255.4</b>	UNICOM <b>122.9 (CTAF)</b>
------------------------	---	-------------------------------



ELEV 2630 TDZE 2627

6000

VGSI and RNAV glidepath not coincident (VGSI Angle 3.00/TCH 43).

5 NM Holding Pattern

CATEGORY	A	B	C	D
LPV DA	2877-1 250 (300-1)			
LNAV/VNAV DA	2917-1 290 (300-1)			
LNAV MDA	3020-1 393 (400-1)		3020-1½ 393 (400-1½)	
CIRCLING	3060-1 430 (500-1)	3100-1 470 (500-1)	3120-1½ 490 (500-1½)	3320-2¼ 690 (700-2¼)