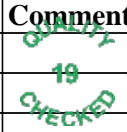


<b>Flight Procedure Tracking Form</b>		<b>Action:</b> AMENDMENT	<b>Task Type:</b> IAP	<b>Date Open:</b> 08/02/2017	<b>Task #:</b> 201410220954250A001	<b>Request #:</b> 20141022095425
<b>Procedure:</b> RNAV (GPS) RWY 11 AMDT 1A			<b>Airport ID:</b> KWS51	<b>Airport:</b> LEEWARD FARM		<b>Reimbursable #:</b> NO
<b>City:</b> SOLDIERS GROVE	<b>ST:</b> WI	<b>GPS #:</b>	<b>Estimated Chart Date:</b> 12/05/2019		<b>FICO #:</b>	
<b>Fac ID:</b> N/A		<b>Fac. Type:</b>		<b>Specialist:</b> JAMES LAFFERTY		
<b>Procedure Review</b>						
	<b>Rec'd</b>	<b>Rel'd</b>	<b>Full Name</b>	<b>Comments</b>		
<b>Lead:</b>	07/31/2019					
<b>QA:</b>						
<b>Liaison:</b>						
<b>Procedure Comments:</b>			ENROUTE-NON	<b>Remark Type:</b> INFORMATION		
<p>ACTIVE DATA USED FOR KWS51 AMENDMENT.</p> <p>VOR MON AMENDMENT</p> <p>PROCESSED IAW AIRCRAFT OPERATIONS GROUP (AJW-33) MEMO, OCTOBER 3, 2018, SUBJECT: FLIGHT INSPECTION REVIEW NOT REQUIRED.</p> <p>CONTACT DAVE TEFFETELLER AT 202-267-5177</p>						

WAAS CH <b>48938</b> <b>W11A</b>	APP CRS <b>110°</b>	Rwy Idg TDZE <b>1068</b> Apt Elev <b>1068</b>
--	------------------------	---

RNAV (GPS) RWY 11

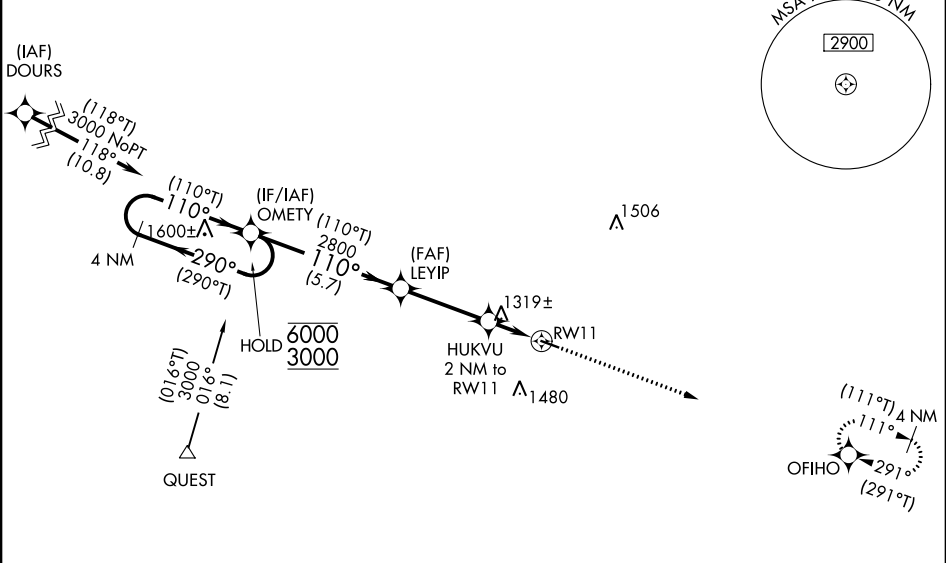
LEEWARD FARM (WS51)

RNP APCH.

Baro-VNAV and VDP NA when using Boscobel altimeter setting. For uncompensated Baro-VNAV systems, LNAV/VNAV NA below -17° C or above 54° C. Use of Leeward Farm requires permission of the owner; use of this procedure requires specific authorization by FAA flight standards. When local altimeter setting not received, use Boscobel altimeter setting and increase LPV DA to 1400 feet, increase LNAV/VNAV DA to 1733 feet, and increase all MDA 100 feet. Increase LNAV visibility Cat C/D visibility 3/8 SM, Circling visibility Cats C 1/2 SM, and Cat D visibility 1/4 SM. Activate HIRLS on 131.52.

MISSED APPROACH:  
Climb to 3000  
direct OFIHO  
and hold.

PROTOTYPE-NOT FOR NAVIGATION



					ELEV 1068		TDZE 1068	
<div>4 NM Holding Pattern OMETY</div> <div><div><div>6000 3000</div><div>GP 3.00° TCH 35</div></div><div><div>(290°T) ←290°→ (110°T)</div><div>(110°T) 110° (110°T)</div><div>2800</div></div><div>5.7 NM</div></div> <div><div>LEYP 2800</div><div>3.3 NM</div><div>*1740</div><div>*1.5 NM to RW11</div><div>RW11</div></div> <div><div>3000</div><div>OFIHO</div><div>*LNAV only</div><div>HUKVU 2 NM to RW11</div><div>110° to RW11</div></div>								
CATEGORY	A	B	C	D				
LPV DA	1318-1		250 (300-1)					
LNAV/ VNAV DA	1651-2		583 (600-2)					
LNAV MDA	1580-1 512 (600-1)		1580-1 <sup>3</sup> / <sub>8</sub> 512 (600-1 <sup>3</sup> / <sub>8</sub> )					
CIRCLING	1600-1 532 (600-1)	1660-1 592 (600-1)	1920-2 <sup>1</sup> / <sub>2</sub> 852 (900-2 <sup>1</sup> / <sub>2</sub> )	1920-2 <sup>3</sup> / <sub>4</sub> 852 (900-2 <sup>3</sup> / <sub>4</sub> )	HIRL Rwy 11-29			

WAAS CH <b>48938</b> <b>W11A</b>	APP CRS <b>110°</b>	Rwy Idg TDZE Apt Elev	<b>3791</b> <b>1068</b> <b>1068</b>
--	------------------------	-----------------------------	---

**OLD**

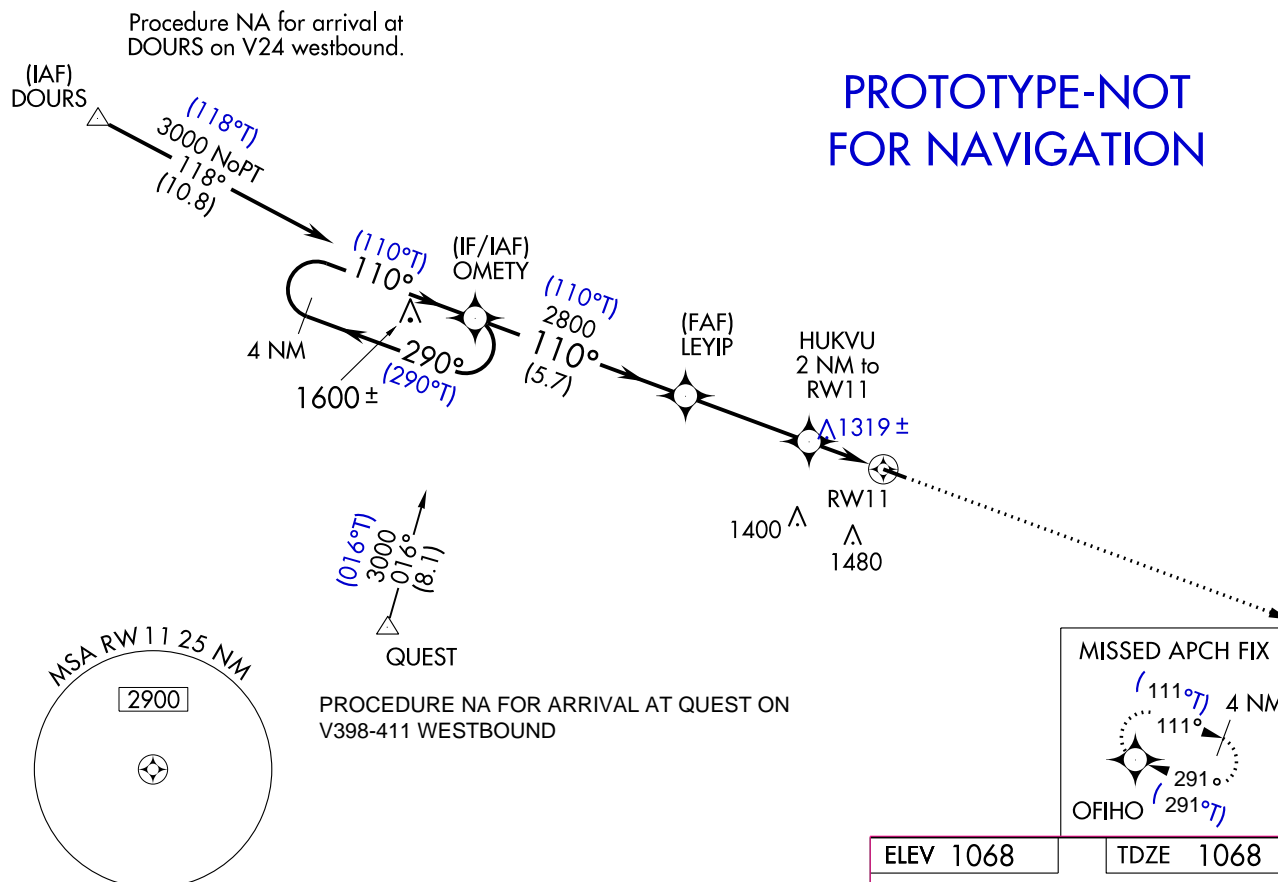
# RNAV (GPS) RWY 11

LEEWARD FARM (WS51)



DME/DME RNP-0.3 NA. When local altimeter setting not received, use Boscobel altimeter setting and increase all DA 82 feet and increase LPV visibility all Cats  $\frac{1}{8}$  mile, LNAV/VNAV visibility all Cats  $\frac{1}{2}$  mile, and increase all MDA 100 feet and increase LNAV visibility Cat C/D  $\frac{3}{8}$  mile, Circling visibility Cat C  $\frac{1}{2}$  mile, Cat D visibility  $\frac{1}{4}$  mile.  
USE OF LEEWARD FARM REQUIRES PERMISSION OF THE OWNER; USE OF THIS PROCEDURE REQUIRES SPECIFIC AUTHORIZATION BY FAA FLIGHT STANDARDS.  
FOR UNCOMPENSTAEED BARO-VNAV SYSTEMS, LNAV/VNAV NA BELOW -17C (2F) OR ABOVE 54C (130F). BARO-VNAV AND VDP NA WITH BOSCOBEL ALTIMETER SETTING.

MISSED APPROACH:  
Climb to 3000 direct  
OFIHO and hold.



ELEV 1068

TDZE 1068

