

Flight Procedures Cover Page	Task Action: FLIGHT CHECK	Task Type: IAP	Estimated Chart Date: 03/26/2020	APWS Task ID: A95B01F73CC643E5B071B6ABC44E7914	APWS Request ID: CB25A8AEC0F8439FAC31C9CDC06CA3EA
Procedure: RNAV (GPS) RWY 29 ORIG-C		Enroute: YES	Specialist: Lemon, Gordon		Agreement Number:
Airport ID:	Airport Name: VIROQUA MUNI		Airport City: VIROQUA		State: WI
Facility ID:	Facility Type:	Flight Inspection Remark Type: New FC Slot			
<p>Procedure Comments: ACTIVE AIRPORT AND RUNWAY DATA USED FOR KY51. REMOVED REFERENCES TO WAUKON VOR/DME (UKN) VOR MON. CONTACT: WARDELL HENNING: 405.954.9954.</p> <p style="text-align: right;"><i>Digitally signed by</i> WARDELL HENNING Jan 22, 2020</p> <p>01/21/2020: THIS IS A CORRECTED COPY OF THE FORM APPROVED ON 12/10/2019. 1. ADDED "SM" TO HELICOPTER VISIBILITY CHART NOTE. 2. CHANGED CHART PLANVIEW NOTE: "PROCEDURE NA FOR ARRIVALS AT QUEST ON V129 SOUTHEAST" TO "PROCEDURE NA FOR ARRIVALS AT QUEST ON V129 SOUTHEAST BOUND".</p>					




FIPC BASIC FORM							
PROCEDURE: RNAV (GPS) RWY 29 ORIG C			AIRPORT NAME: VIROQUA MUNI		AIRPORT ID: KY51	SPECIAL CONTROL NO: BG-12-002-19	
FAC ID: KY5129		CITY: VIROQUA			ST: WI	ORIG CHART DATE: 03/26/2020	
DFL TYPE: PROC/G	THIRD PARTY: <input type="checkbox"/> YES	EST. TIME ON SITE: 0.5	REIMB. NUMBER:		PTS TASK ID: 2014102209542509001		
PREFLIGHT NOTES							
REVIEWER:					DATE:		
COMMENTS:					CHECK ONE:		
					<input type="checkbox"/> FLT CK REQ <input type="checkbox"/> NFCR <input type="checkbox"/> REJECT		
							YES
					CPV COMPLETE?		
PROCEDURE RESULTS							
INSPECTION DATE: 12/07/2019		CREW #: VN323	N #: N89	INSTRUMENT PROCEDURE STATUS: <input checked="" type="checkbox"/> SAT <input type="checkbox"/> SAT W/CHANGES <input type="checkbox"/> UNSAT		ARINC CODING: <input type="checkbox"/> SAT <input type="checkbox"/> SAT/GOLD <input type="checkbox"/> UNSAT	
FLIGHT INSPECTOR SIGNATURE: greg baur @ 12/08/2019 08:46			PRINTED NAME: BAUR, GREGORY RAYMOND			NOTAM INITIATED? <input type="checkbox"/> YES <input checked="" type="checkbox"/> NO	
FLIGHT INSPECTOR REMARKS: Complete Sat; NOT GOLD STANDARD. SIAP was not in custom database							
IN-FLIGHT OBSTACLE REPORT							
OBSTRUCTION ID #:	COORDINATES OR LOCATION:		GNSS ALTITUDE (MSL):		BAROMETRIC ALTITUDE (MSL):		HEIGHT ABOVE GROUND LEVEL:

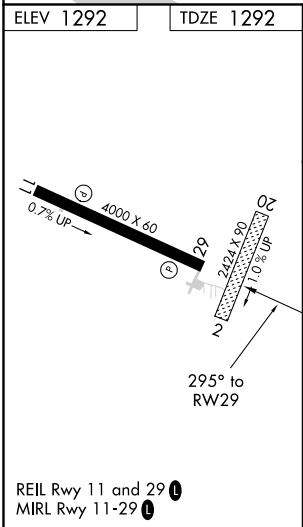
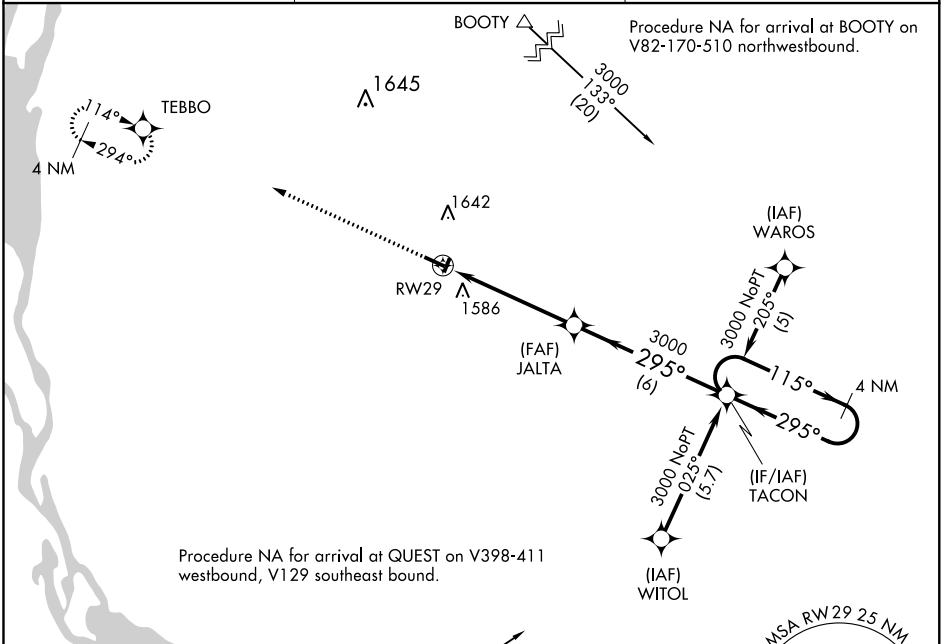
APP CRS	Rwy Idg	4000
295°	TDZE	1292
	Apt Elev	1292

RNAV (GPS) RWY 29

VIROQUA MUNI (Y51)

<div> <div> <div></div> <div>NA</div> </div> <div> DME/DME RNP-0.3 NA. Procedure NA at night. Use La Crosse altimeter setting. Helicopter visibility reduction below 1 SM NA. Circling NA to Rwys 2 and 20. </div> </div>	<div>MISSED APPROACH: Climb to 3000 direct TEBBO WP and hold.</div>
--	---

<div>AWOS-3P</div> <div>118.975</div>	<div>MINNEAPOLIS CENTER</div> <div>128.6 363.0</div>	<div>CTAF</div> <div>122.9 </div>
---------------------------------------	--	--



<div> <div>3000</div> <div>TEBBO</div> </div>			
<div> <div>JALTA</div> <div>TACON</div> <div>4 NM Holding Pattern</div> </div>			
<div> <div>RW29</div> <div>3000</div> <div>295°</div> <div>115°</div> <div>3000</div> <div>5.2 NM</div> <div>6 NM</div> <div>3.04° TCH 40</div> </div>			
CATEGORY	A	B	C
LNAV MDA	1980-1	688 (700-1)	1980-2
			688 (700-2)
CIRCLING	2060-1	2060-1¼	2120-2½
	768 (800-1)	768 (800-1¼)	828 (900-2½)
			NA

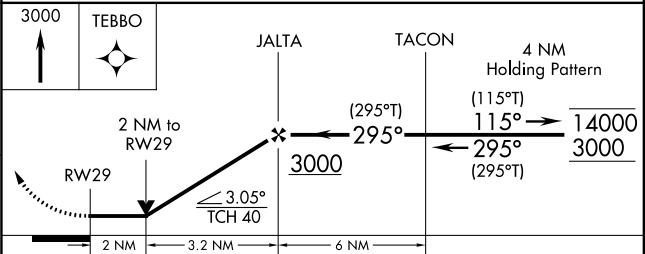
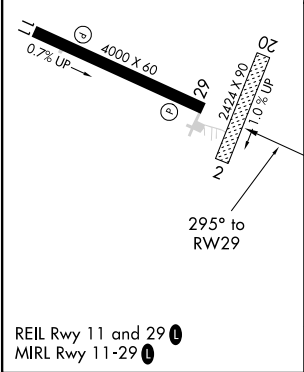
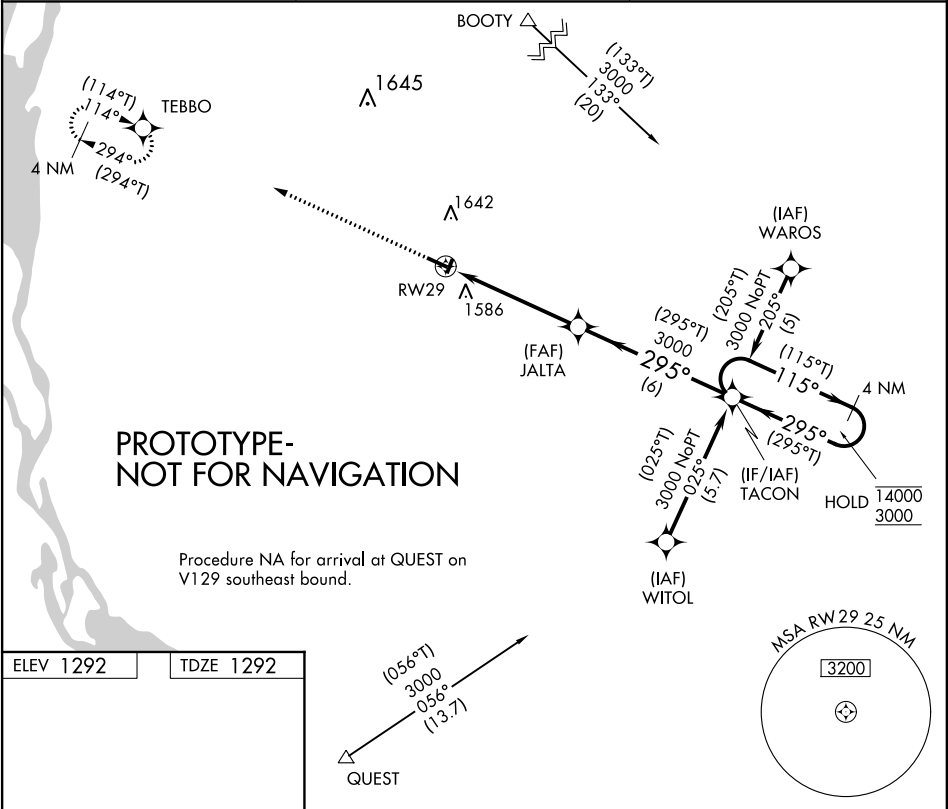
APP CRS	Rwy Idg	4000
295°	TDZE	1292
	Apt Elev	1292

RNAV (GPS) RWY 29

VIROQUA MUNI (Y51)

RNP APCH.	MISSED APPROACH: Climb to 3000 direct TEBBO and hold.
<div><div></div><div></div></div> <div>Circling NA to Rwys 2 and 20. Rwy 29 helicopter visibility reduction below ¾ NA.</div>	

AWOS-3P 118.975	MINNEAPOLIS CENTER 128.6 363.0	CTAF 122.9 0
--------------------	-----------------------------------	-----------------



CATEGORY	A	B	C	D
LNAV MDA	1980-1	688 (700-1)	1980-2 688 (700-2)	NA
CIRCLING	2060-1 768 (800-1)	2100-1¼ 808 (900-1¼)	2120-2½ 828 (900-2½)	NA

