

Flight Procedure Tracking Form		Action: FLIGHT CHECK	Task Type: IAP	Date Open: 08/26/2015	Task #: 2014102209542501002	Request #: 20141022095425
Procedure: COPTER ILS Y OR LOC Y RWY 31 AMDT 3			Airport ID: KRST	Airport: ROCHESTER INTL	Reimbursable #: NO	
City: ROCHESTER	ST: MN	GPS #:	Estimated Chart Date: 01/03/2019		FICO #: 1219453	
Fac ID: RST		Fac. Type: ILS		Specialist: ROBERT GRIM		
Procedure Review						
	Rec'd	Rel'd	Full Name	Comments		
Lead:	07/12/2018	11/20/2018	DONALD LANIER	QUALITY		
QA:	11/20/2018	10/05/2018	KISSY MAXFIELD	4 11/21CTabaka		
Liaison:	10/05/2018	10/09/2018	MARY MCDONALD	CHECKED		
Procedure Comments:			ENROUTE-NON			
			Remark Type: INFORMATION			
<p>CONTACT INFO: DON LANIER MANAGER AJV-5431, 405.954.8242</p> <p>11-2-18: THIS IS A CORRECTED COPY OF THE FORM APPROVED ON 10-5-18.</p> <p>1. CHANGED MINGO INT/RST 9.16 DME TO MINGO INT.</p> <p>2. ADDED 2800 MINGO INT TO LINE 4 8260-3.</p>						

EXISTING


ROCHESTER, MINNESOTA

AL-5041 (FAA)

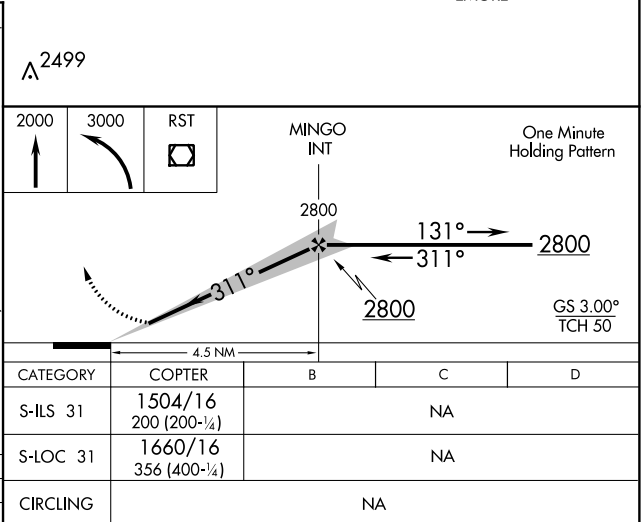
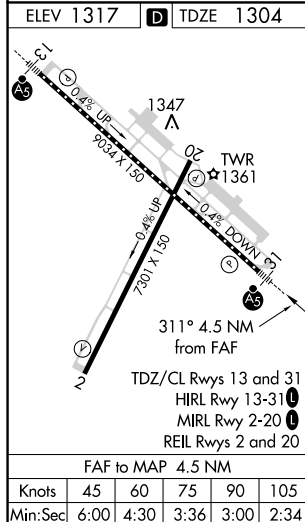
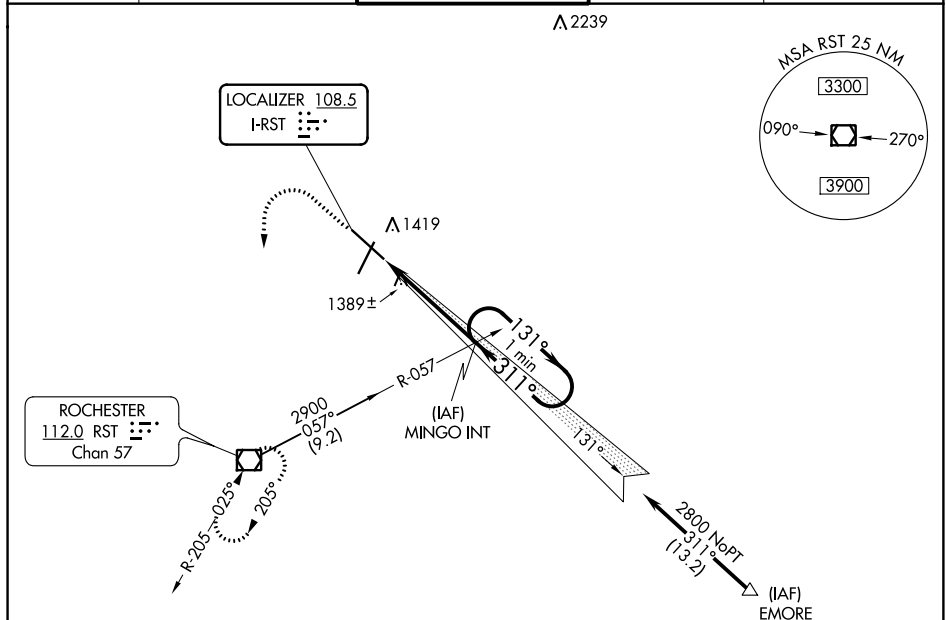
17341

LOC I-RST 108.5	APP CRS 311°	Rwy Idg TDZE Apt Elev 9033 1304 1317
---------------------------	------------------------	--

COPTER ILS or LOC RWY 31
ROCHESTER INTL (RST)

ASR For inop MALSR, increase visibility to RVR 2400.	MALSR 	MISSED APPROACH: Climb to 2000 then climbing left turn to 3000 direct RST VOR/DME and hold.
--	--	---

ATIS 120.5	ROCHESTER APP CON* 119.8 251.125	ROCHESTER TOWER* 118.3 (CTAF) 257.8	GND CON 121.9	UNICOM 122.95
----------------------	--	---	-------------------------	-------------------------



ROCHESTER, MINNESOTA

43°54'N-92°30'W

ROCHESTER INTL (RST)

Amdt 2 15JAN09

COPTER ILS or LOC RWY 31

NC-1, 16 AUG 2018 to 13 SEP 2018

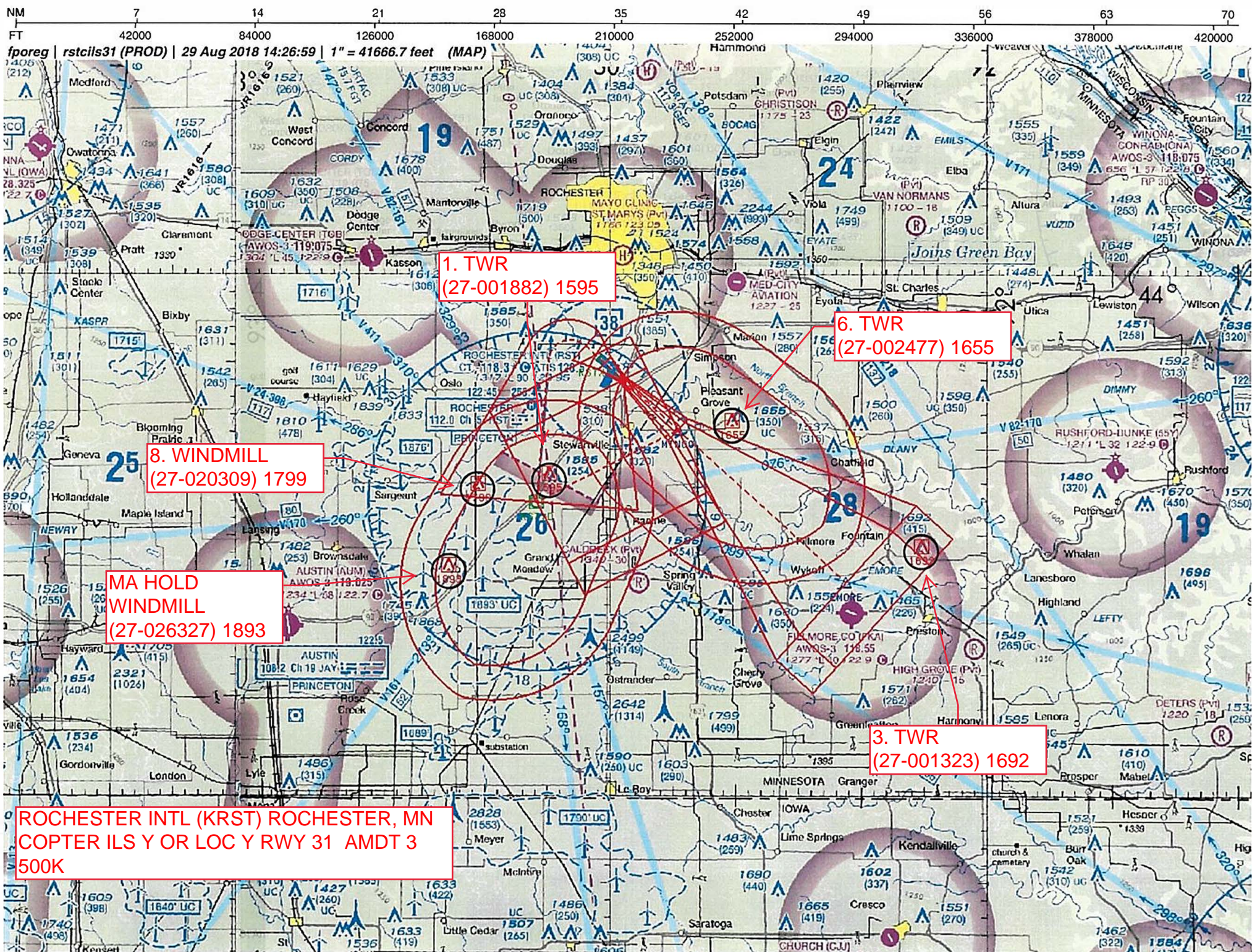
NC-1, 16 AUG 2018 to 13 SEP 2018

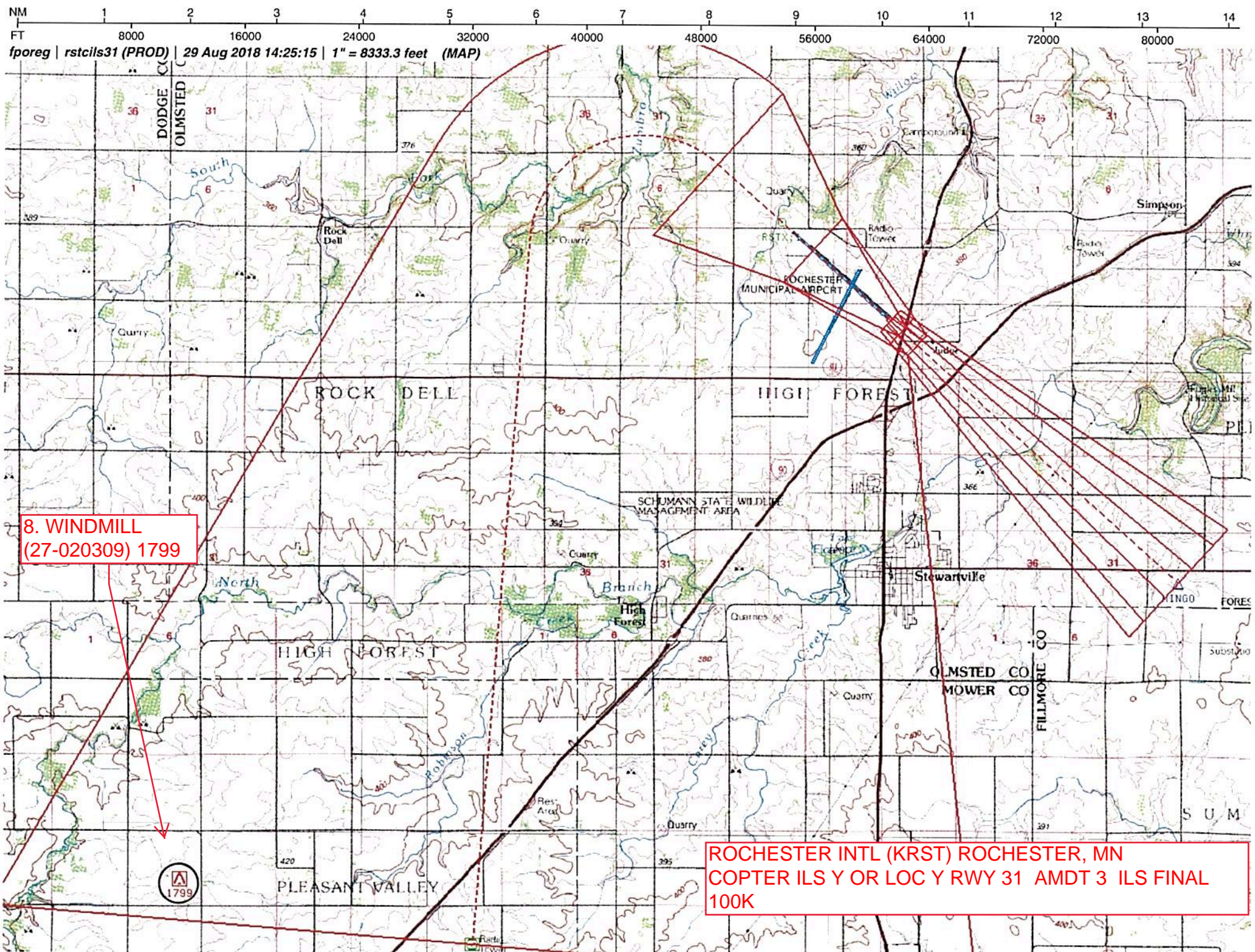
FIG Rework

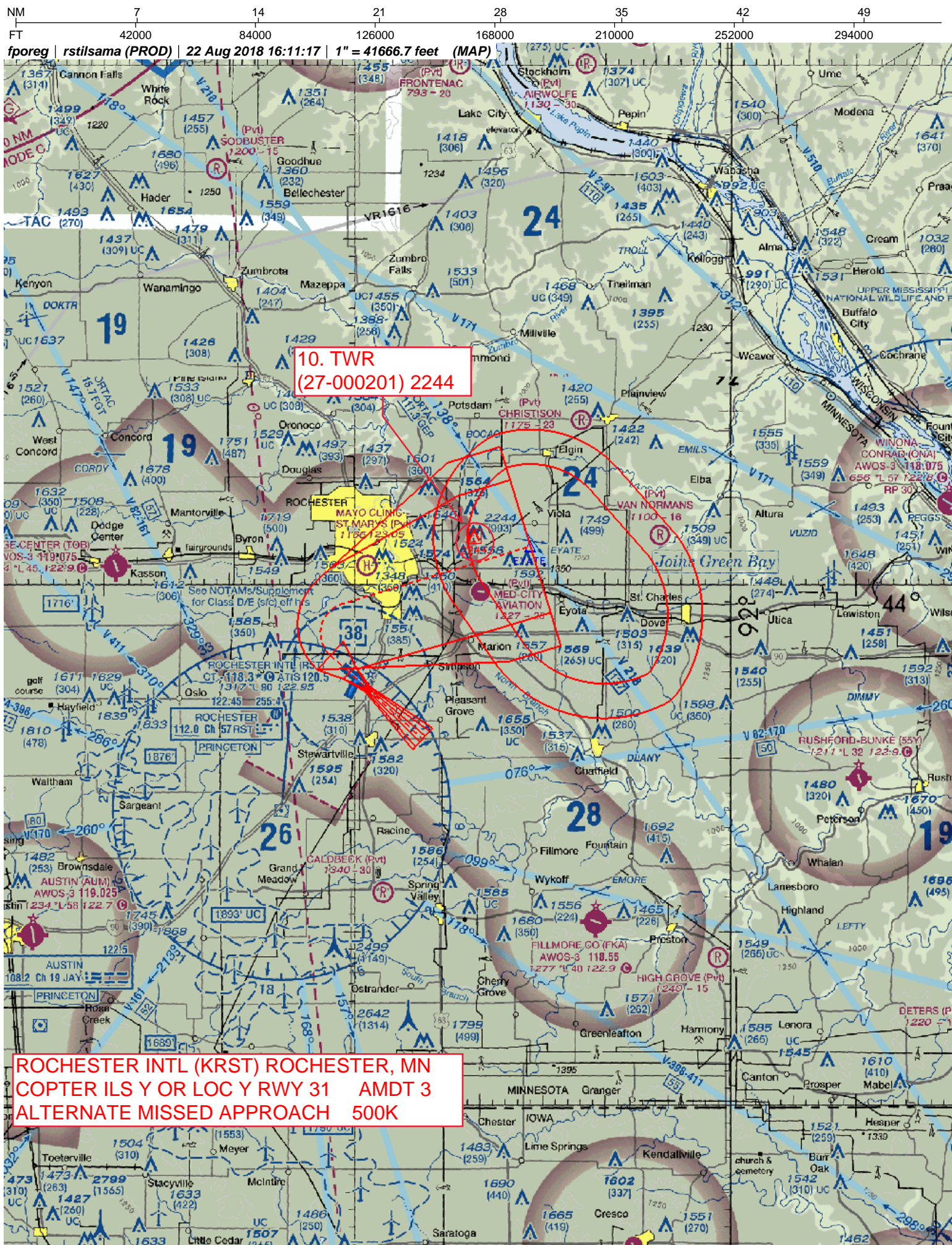
~~ROCHESTER INTL (RST)~~

MISSED APPROACH: Climb to 2000 then climbing left turn to 3000 direct RST VOR/DME and hold.

COPTER ILS Y or LOC Y RWY 31







ROCHESTER INTL (KRST) ROCHESTER, MN
COPTER ILS Y OR LOC Y RWY 31 AMDT 3
ALTERNATE MISSED APPROACH 100K