

Flight Procedure Tracking Form		Action: FLIGHT CHECK	Task Type: IAP	Date Open: 10/21/2014	Task #: 2014102125725701002	Request #: 20141021257257
Procedure: RNAV (GPS) RWY 31 ORIG			Airport ID: K2J3	Airport: LOUISVILLE MUNI		Reimbursable #: NO
City: LOUISVILLE	ST: GA	GPS #:	Estimated Chart Date: 08/17/2017		FICO #:	
Fac ID: N/A		Fac. Type:			Specialist: HOWARD HAWKINS	
Procedure Review						
	Rec'd	Rel'd	Full Name	Comments		
Lead:	03/02/2016	10/05/2016	DANA MITCHELL			
QA:	10/05/2016	4/13	CLARK			
Liaison:						
Procedure Comments:			ENROUTE-NON	Remark Type: INFORMATION		
CONTACT DAVE TEFFETELLER: 301-427-4767						

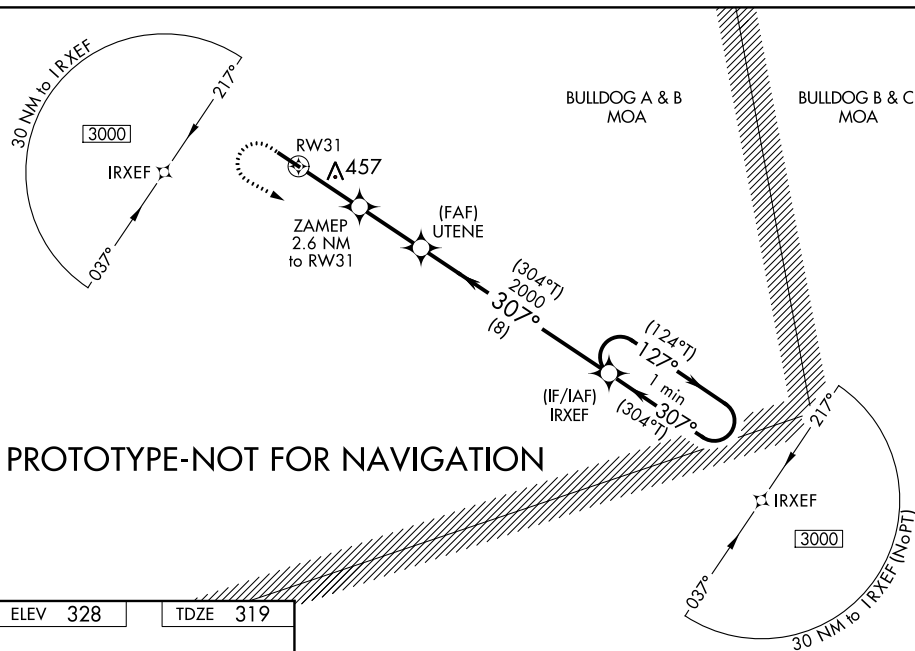


Flight Procedure Tracking Form		Action: FLIGHT CHECK	Task Type: NIGHTEVAL	Date Open: 10/21/2014	Task #: 2014102125725703001	Request #: 20141021257257
Procedure: EVAL K2J3 NIGHTEVAL 2015			Airport ID: K2J3	Airport: LOUISVILLE MUNI		Reimbursable #: NO
City: LOUISVILLE	ST: GA	GPS #:	Estimated Chart Date: 08/17/2017		FICO #:	
Fac ID: N/A		Fac. Type:			Specialist: HOWARD HAWKINS	
Procedure Review						
	Rec'd	Rel'd	Full Name	Comments		
Lead:	03/02/2016					
QA:						
Liaison:						
Procedure Comments:			ENROUTE-NON	Remark Type: INFORMATION		
REQUEST NIGHT EVAL, AIRPORT IS CONVERTING FROM VFR TO IFR. CONTACT DAVE TEFTELLER 301-427-4767						

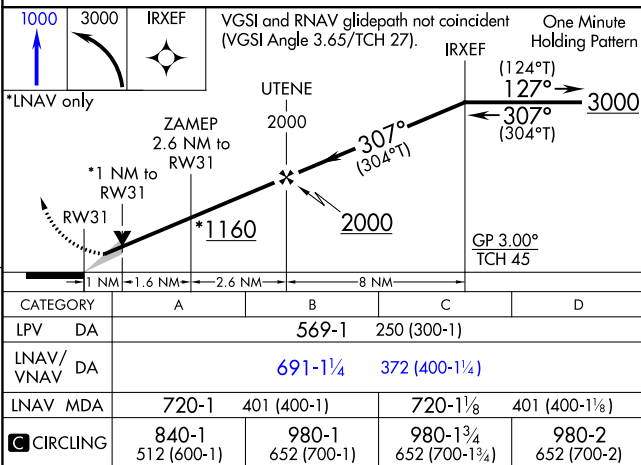
FIG

RNAV (GPS) RWY 31
LOUISVILLE MUNI (2J3)

MISSED APPROACH: Climb to 1000 then climbing left turn to 3000 direct IRXEF and hold.

CTAF
122.9 **L**

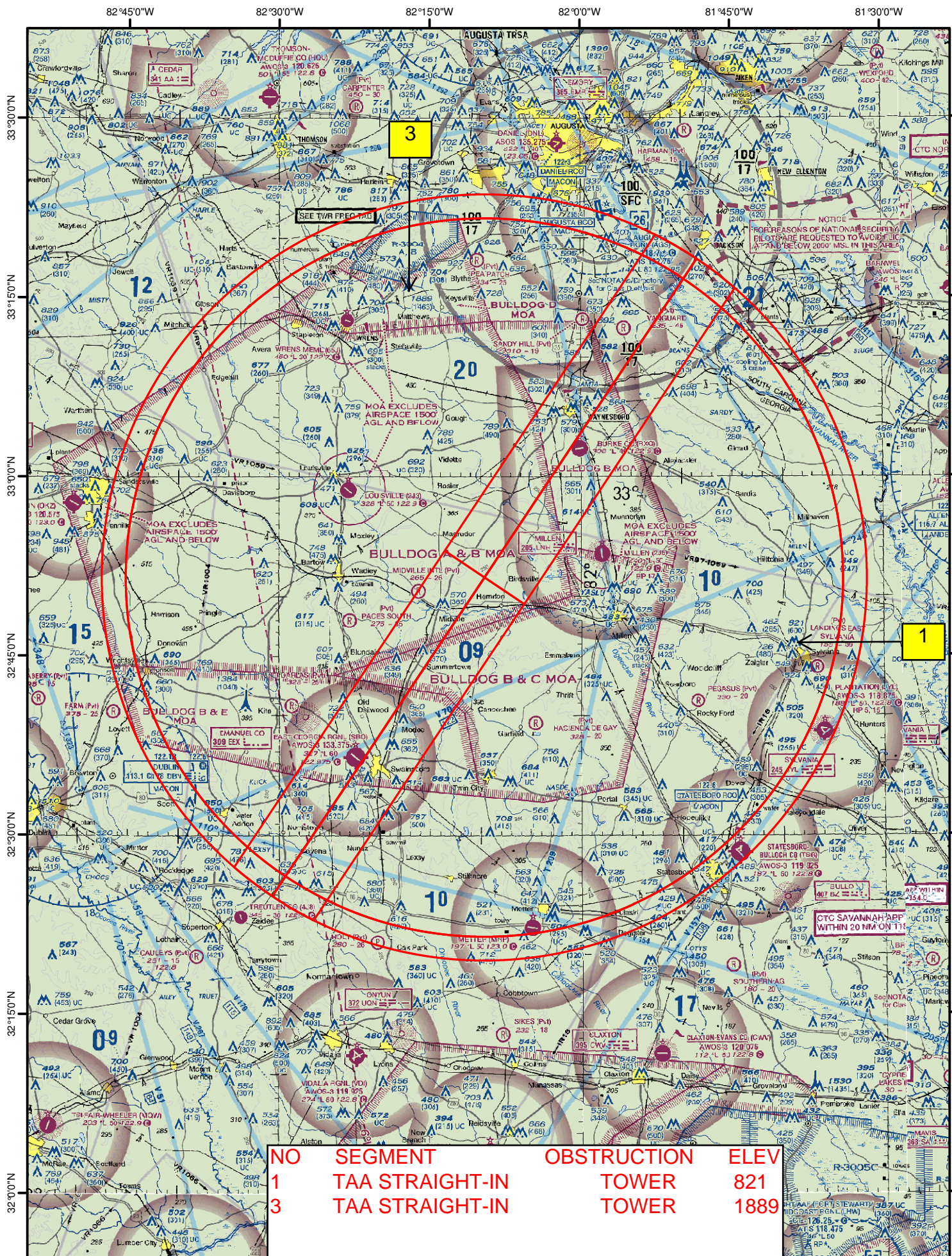
ELEV	328		TDZE	319
------	-----	--	------	-----

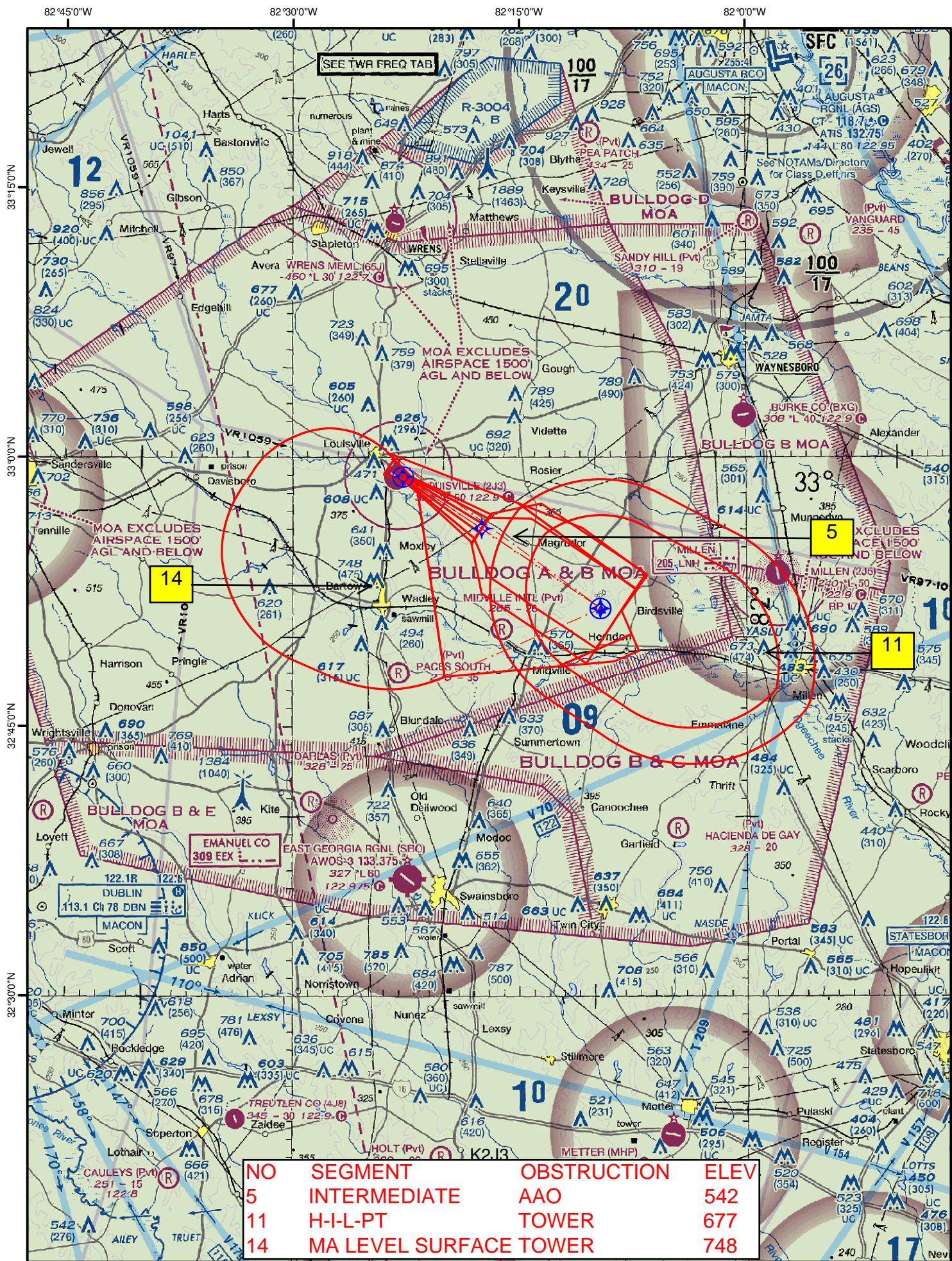


MIRL Rwy 13-31 L

LOUISVILLE MUNI (2J3)

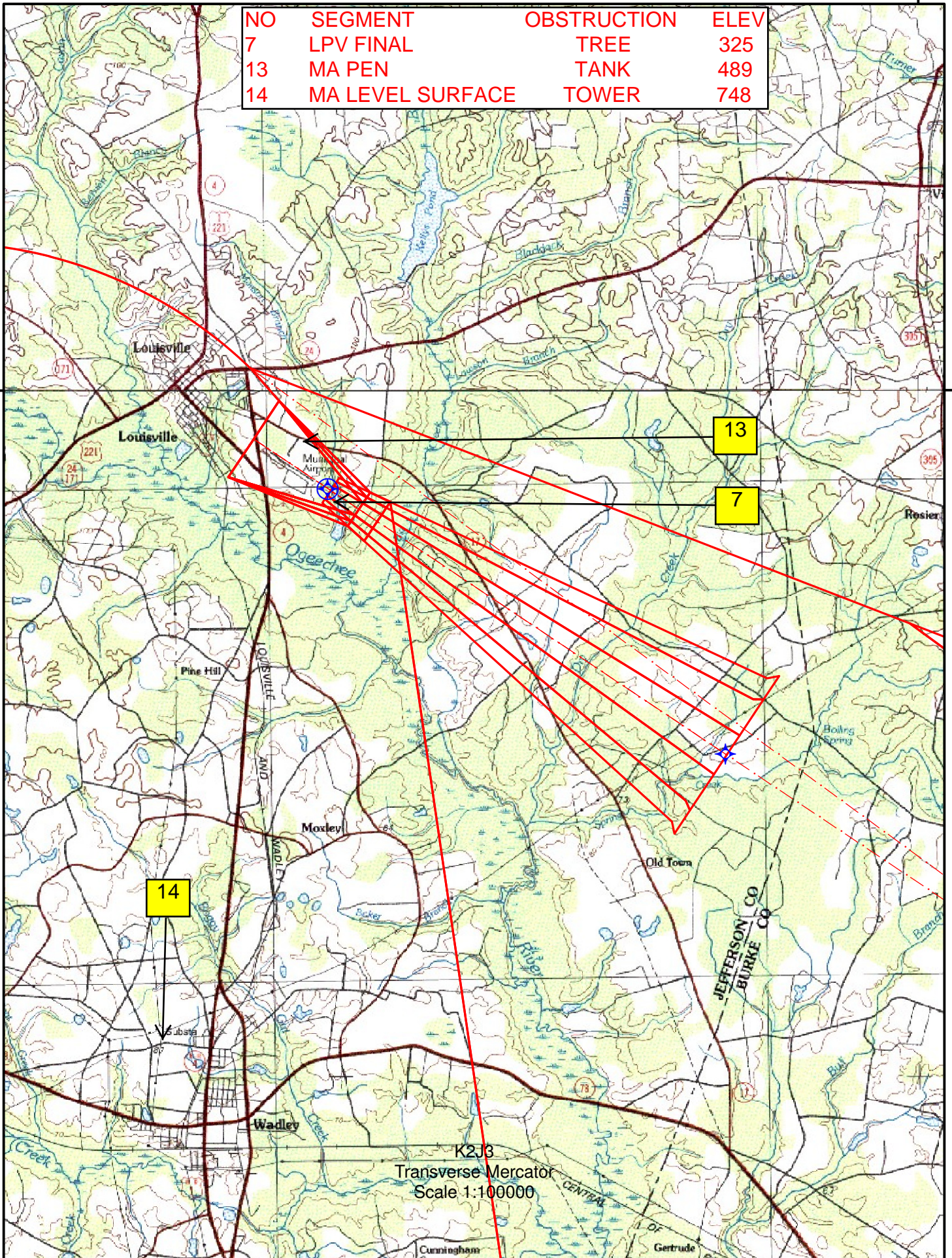
RNAV (GPS) RWY 31



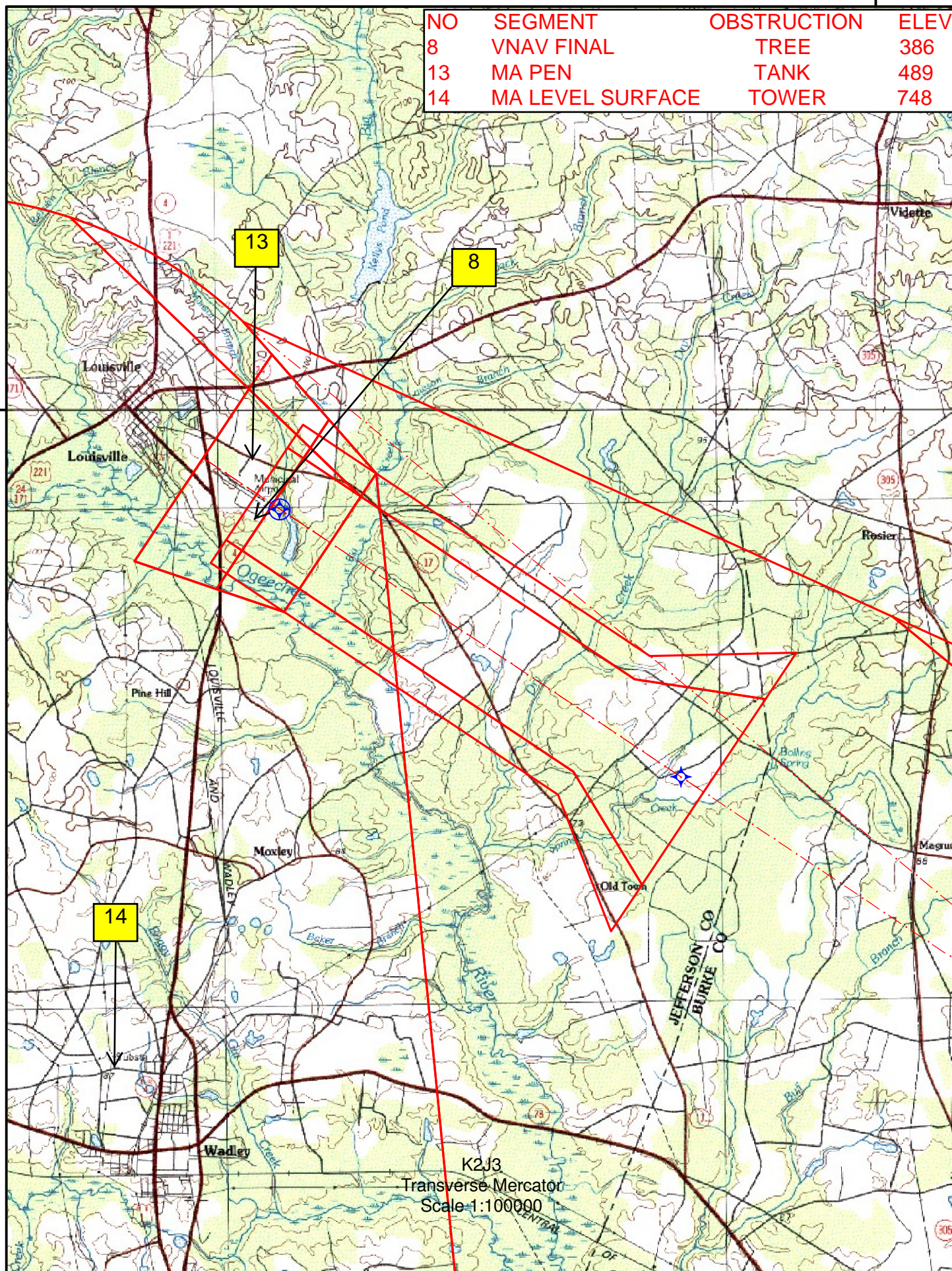


NO	SEGMENT	OBSTRUCTION	ELEV
7	LPV FINAL	TREE	325
13	MA PEN	TANK	489
14	MA LEVEL SURFACE	TOWER	748

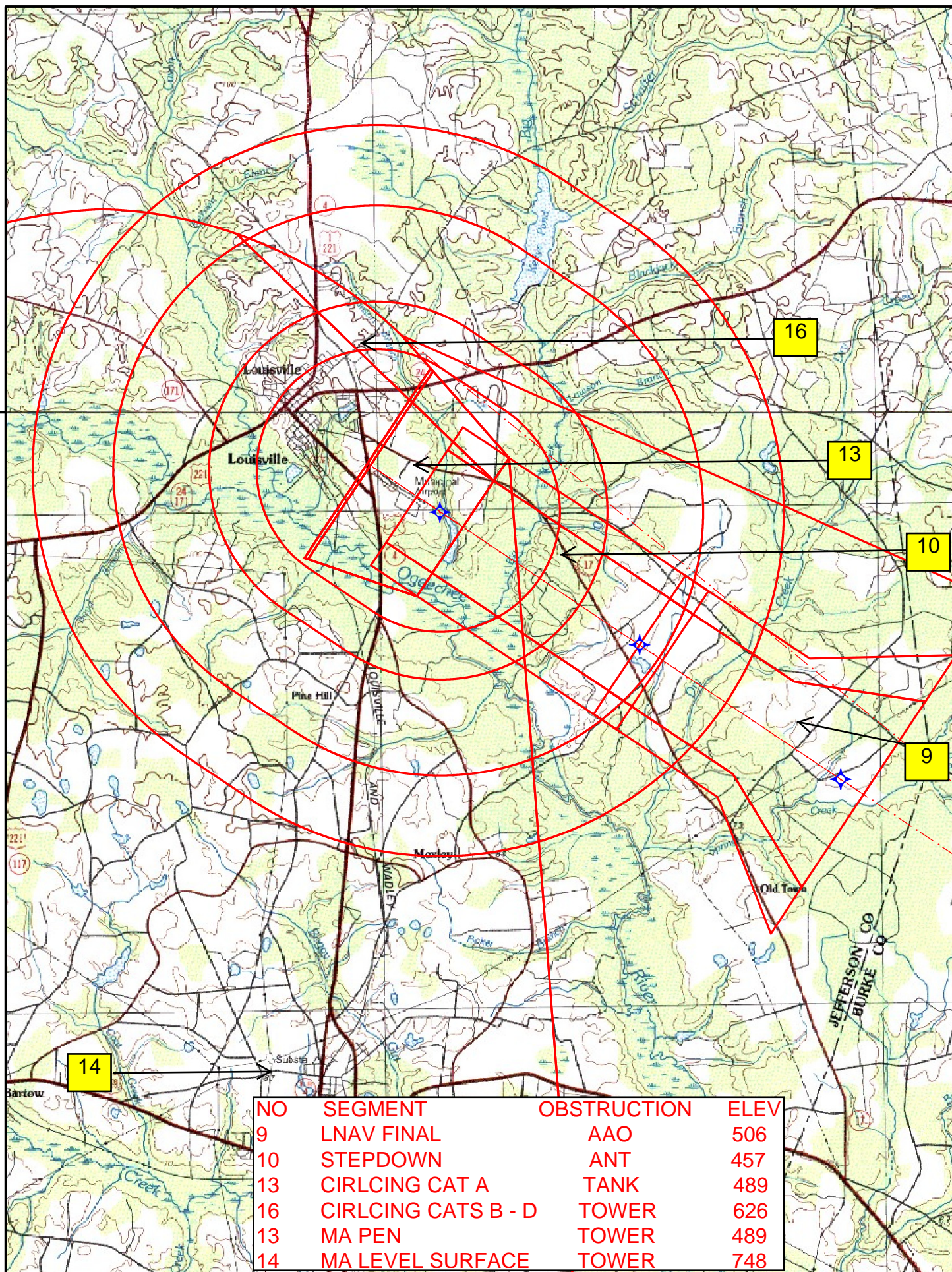
33°00'0"N



NO	SEGMENT	OBSTRUCTION	ELEV
8	VNAV FINAL	TREE	386
13	MA PEN	TANK	489
14	MA LEVEL SURFACE	TOWER	748



33°00'N



TERMINAL AIRSPACE DATA REQUIREMENTS

CITY: **LOUISVILLE**

STATE: **GA**

AIRPORT NAME: **LOUISVILLE MUNI**

ID: **K2J3**

PROCEDURE: **RNAV (GPS) RWY 31**

AMDT: **ORIG**

DOCKET#: **15-ASO-4**
(96-AXX-X/Required/Not Required)

ALL DIST TO 1/100 NM; ELEV TO NEAREST FT; COORD TO 1/100 SEC; DEG TO 1/100 DG.

- | | | | |
|---|---------------------------------|--------------------------------|---------------|
| 1. Distance from | <u>THLD</u> | to 1000' point | <u>3.35</u> |
| <small>(Enter THLD, FAF, ARP, FACILITY, as appropriate)</small> | | | |
| 2. Width of | <u>FINAL</u> | segment at 1000' point | <u>1.20</u> |
| <small>(Enter appropriate segment, final, intermediate, etc.)</small> | | | |
| 3. True Course of | <u>FINAL</u> | segment containing 1000' point | <u>303.73</u> |
| 4. High Terrain in | <u>FINAL</u> | segment containing 1000' point | <u>306</u> |
| 5. Distance from | <u>THLD</u> | to 1500' point | <u>0.66</u> |
| <small>(If 1500' point in PT maneuvering area or holding pattern note in remarks)</small> | | | |
| 6. Width of | <u>FINAL</u> | segment at 1500' point | <u>1.52</u> |
| 7. True Course of | <u>FINAL</u> | segment containing 1500' point | <u>303.73</u> |
| 8. High Terrain in | <u>FINAL</u> | segment containing 1500' point | <u>306</u> |
| 9. Threshold Coordinates (if straight-in) ... | <u>325855.63N / 0822240.94W</u> | | |
| 10. ARP Coordinates | <u>325909.40N / 0822305.30W</u> | | |
| 11. Runway Approach End and distance furthest from ARP | RWY | <u>13</u> | |
| | Distance | <u>0.41</u> | NM |
| 12. FAF Coordinates | <u>325601.60N / 0821731.35W</u> | | |

REMARKS: Approach/Drawing attached.

TAA: IRXEF (IF/IAF) 325134.32N-0520937.41W RADIUS: 30 NM