

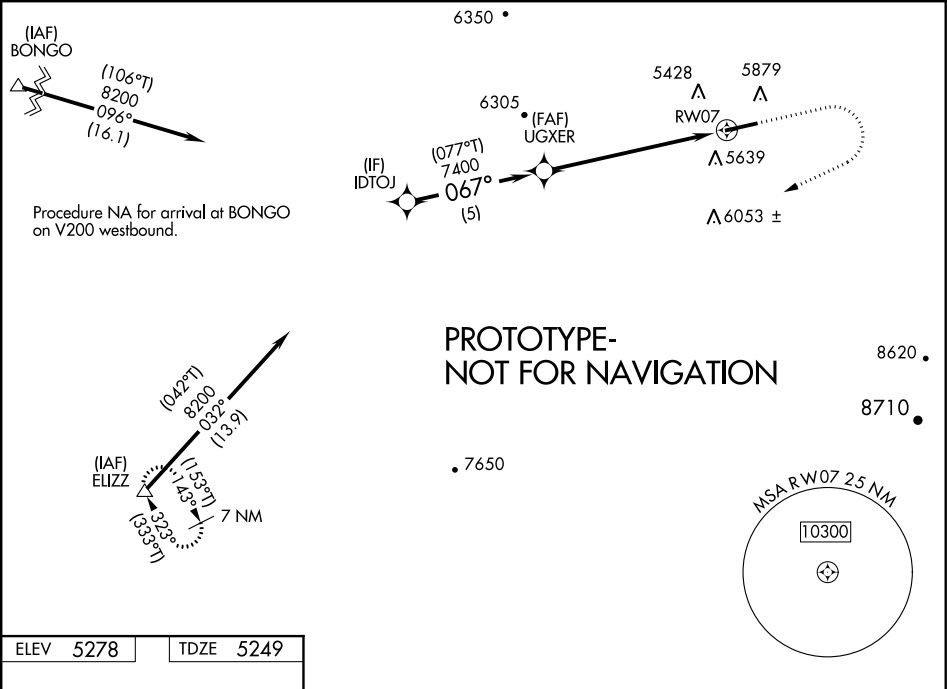
Flight Procedure Tracking Form		Action: FLIGHT CHECK	Task Type: IAP	Date Open: 10/17/2014	Task #: 2014101734360901001	Request #: 20141017343609
Procedure: RNAV (GPS) RWY 7 ORIG			Airport ID: K4V0	Airport: RANGELY		Reimbursable #: NO
City: RANGELY	ST: CO	GPS #:	Estimated Chart Date: 03/29/2018		FICO #:	
Fac ID: N/A		Fac. Type:			Specialist: FRANK MOORE	
Procedure Review						
	Rec'd	Rel'd	Full Name	Comments		
Lead:	08/31/2017	11/07/2017	DAVID TEFFETELLER	<div>QUALITY</div> <div>10</div> <div>CHECKED</div>		
QA:	11/07/2017					
Liaison:						
Procedure Comments:			ENROUTE	Remark Type: INFORMATION		
CONTACT: DAVE TEFFETELLER 301-427-4767 PENDING DATA USED FOR K4V0 PROCEDURE				ARI SAVED 12/12/17		

WAAS CH 99541 W07A	APP CRS 067°	Rwy Idg TDZE 5249 Apt Elev 5278
--	------------------------	---

RNAV (GPS) RWY 7
RANGELY (4VØ)

<div></div> <div>For uncompensated Baro-VNAV systems, LNAV/VNAV NA below -28°C (-18°F) or above 54°C (130°F). Circling Rwy 25 NA at night. DME/DME RNP-0.3 NA.</div>	MISSED APPROACH: Climb to 5700 then climbing right turn to 10800 direct ELIZZ and hold. # Missed approach requires a minimum climb of 425 feet per NM to 8200 feet.
--	--

AWOS-3PT 119.025	DENVER RADIO 122.65	UNICOM 122.8 (CTAF) 0
----------------------------	-------------------------------	---------------------------------



ELEV 5278	TDZE 5249
------------------	------------------

<div>067° to RW07</div> <div></div>	<div><div>5700</div><div>10800</div><div>ELIZZ</div></div> <div></div> <div><div>GP 3.00°</div><div>TCH 40</div></div> <div><div>5 NM</div><div>0.8 NM</div><div>5.9 NM</div></div>			
CATEGORY	A	B	C	D
LPV DA #	5599-1	350 (400-1)		NA
LPV DA	6013-2½	764 (800-2½)		NA
LNAV/VNAV DA	6041-2½	792 (800-2½)		NA
LNAV MDA	7180-1¼ 1931 (2000-1¼)	7180-1½ 1931 (2000-1½)	7180-3 1931 (2000-3)	NA
<div> CIRCLING</div>	7180-1¼ 1902 (2000-1¼)	7180-1½ 1902 (2000-1½)	7180-3 1902 (2000-3)	NA

REIL Rwys 7 and 25 **0**
MIRL Rwy 7-25 **0**

TERMINAL AIRSPACE DATA REQUIREMENTS

CITY: **RANGELY**

STATE: **CO**

AIRPORT NAME: **RANGELY**

ID: **K4V0**

PROCEDURE: **RNAV (GPS) RWY 7**

AMDT: **ORIG**

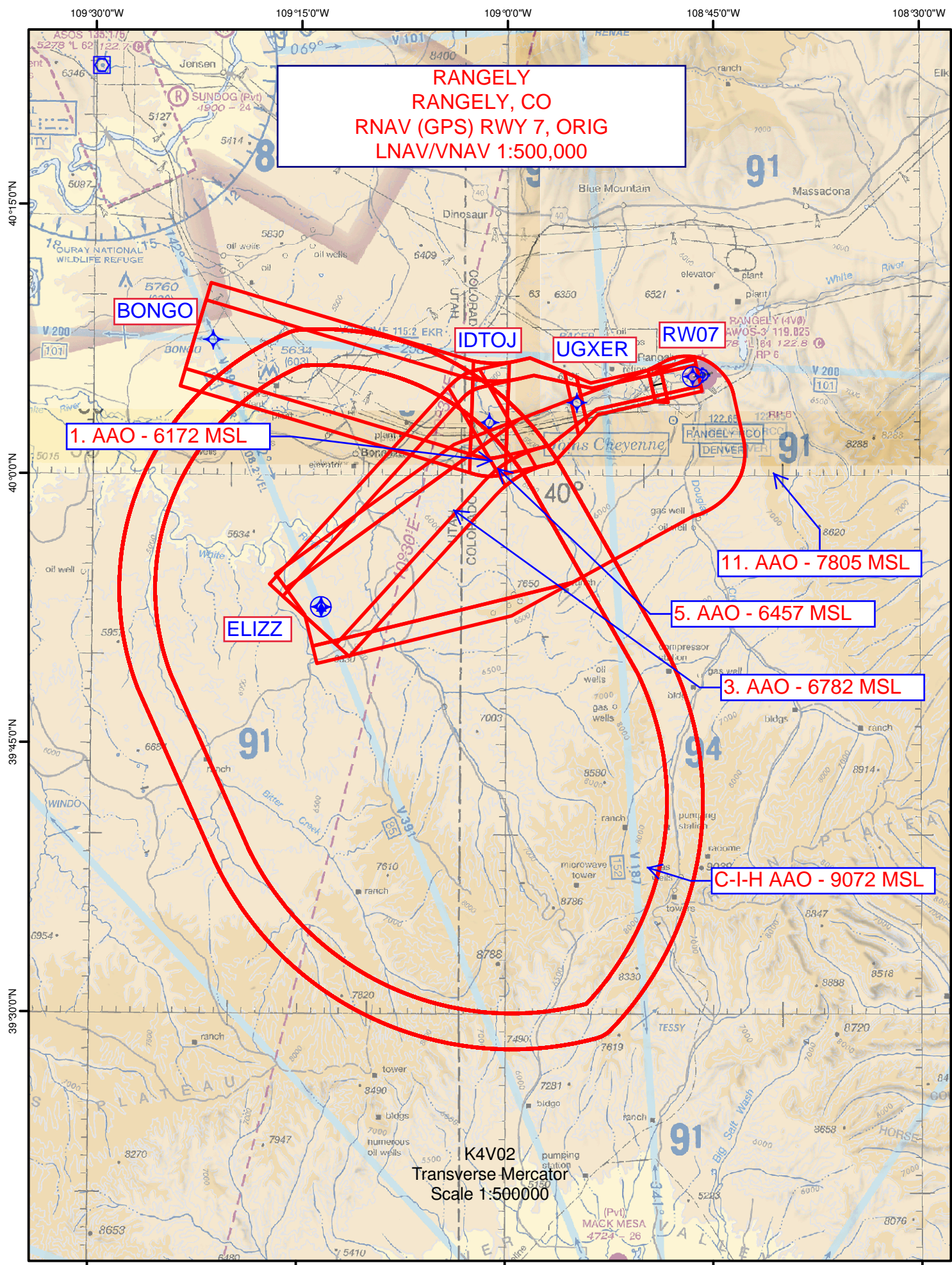
DOCKET#: **16-ANM-9**
(96-AXX-X/Required/Not Required)

ALL DIST TO 1/100 NM; ELEV TO NEAREST FT; COORD TO 1/100 SEC; DEG TO 1/100 DG.

- | | | | |
|---|---------------------------------|--------------------------------|---------------|
| 1. Distance from | <u>THLD</u> | to 1000' point | <u>4.47</u> |
| <small>(Enter THLD, FAF, ARP, FACILITY, as appropriate)</small> | | | |
| 2. Width of | <u>FINAL</u> | segment at 1000' point | <u>1.20</u> |
| <small>(Enter appropriate segment, final, intermediate, etc.)</small> | | | |
| 3. True Course of | <u>FINAL</u> | segment containing 1000' point | <u>077.32</u> |
| 4. High Terrain in | <u>FINAL</u> | segment containing 1000' point | <u>5659</u> |
| 5. Distance from | <u>THLD</u> | to 1500' point | <u>11.66</u> |
| <small>(If 1500' point in PT maneuvering area or holding pattern note in remarks)</small> | | | |
| 6. Width of | <u>INTERMEDIATE</u> | segment at 1500' point | <u>1.76</u> |
| 7. True Course of | <u>INTERMEDIATE</u> | segment containing 1500' point | <u>077.25</u> |
| 8. High Terrain in | <u>INTERMEDIATE</u> | segment containing 1500' point | <u>6136</u> |
| 9. Threshold Coordinates (if straight-in) ... | <u>400531.43N / 1084627.19W</u> | | |
| 10. ARP Coordinates | <u>400538.30N / 1084547.00W</u> | | |
| 11. Runway Approach End and distance furthest from ARP | RWY | <u>7</u> | |
| | Distance | <u>0.37</u> | NM |
| 12. FAF Coordinates | <u>400403.91N / 1085455.46W</u> | | |

REMARKS: Approach/Drawing attached.

RW07 (MAP) : 400531.432N/1084627.192W



108°45'0"W

RANGELY
RANGELY, CO
RNAV (GPS) RWY 7, ORIG
LNAV/CIRCLING 1:100,000

14. TREE - 6291 MSL

13. TREE - 6029 MSL

9. AAO - 5859 MSL

RW07

UGXER

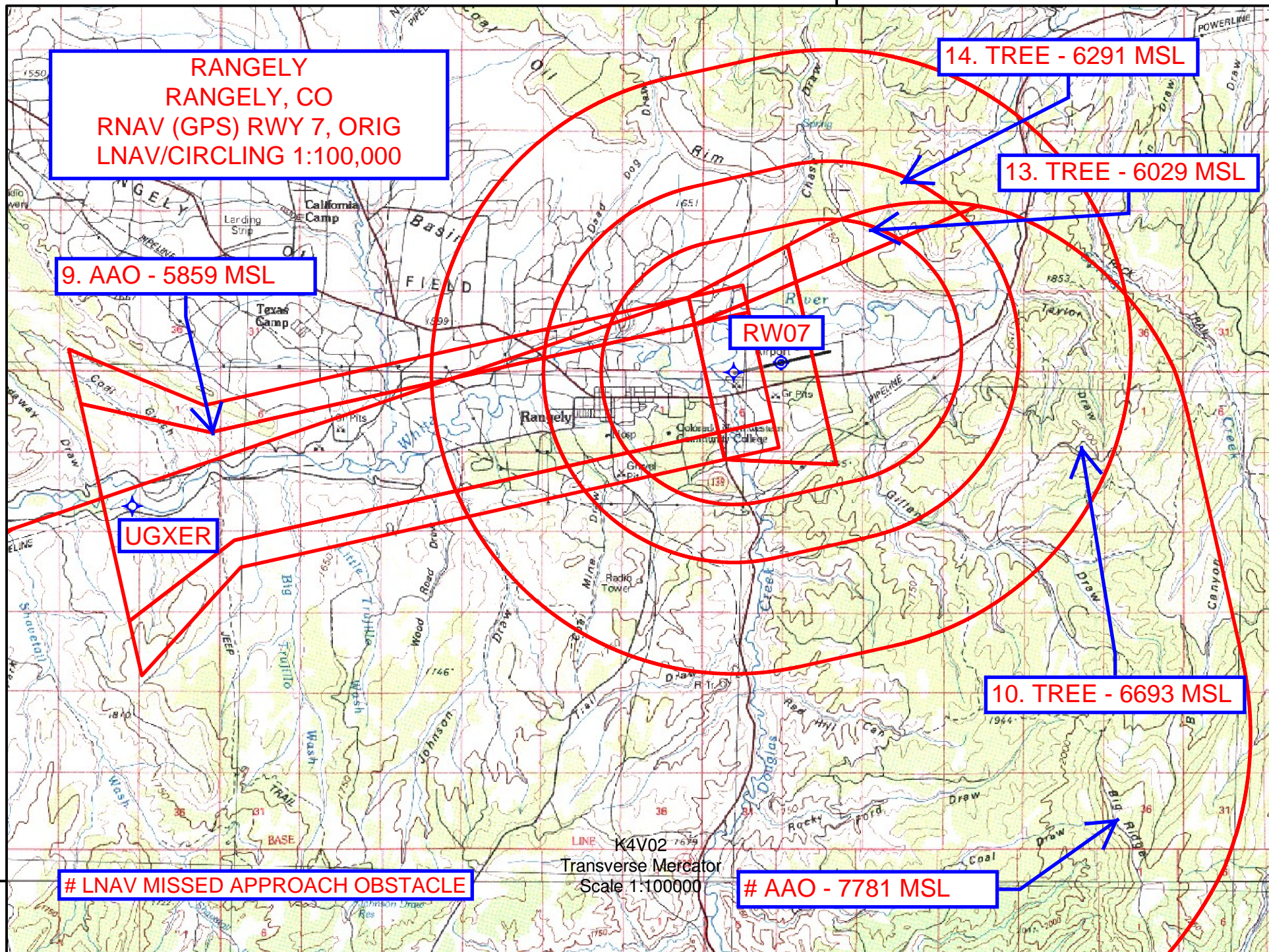
10. TREE - 6693 MSL

LNAV MISSED APPROACH OBSTACLE

AAO - 7781 MSL

K4V02
Transverse Mercator
Scale 1:100000

40°00'N



108°45'0"W

RANGELY
RANGELY, CO
RNAV (GPS) RWY 7, ORIG
LNAV/VNAV 1:100,000

RW07

UGXER

10. TREE - 6693 MSL

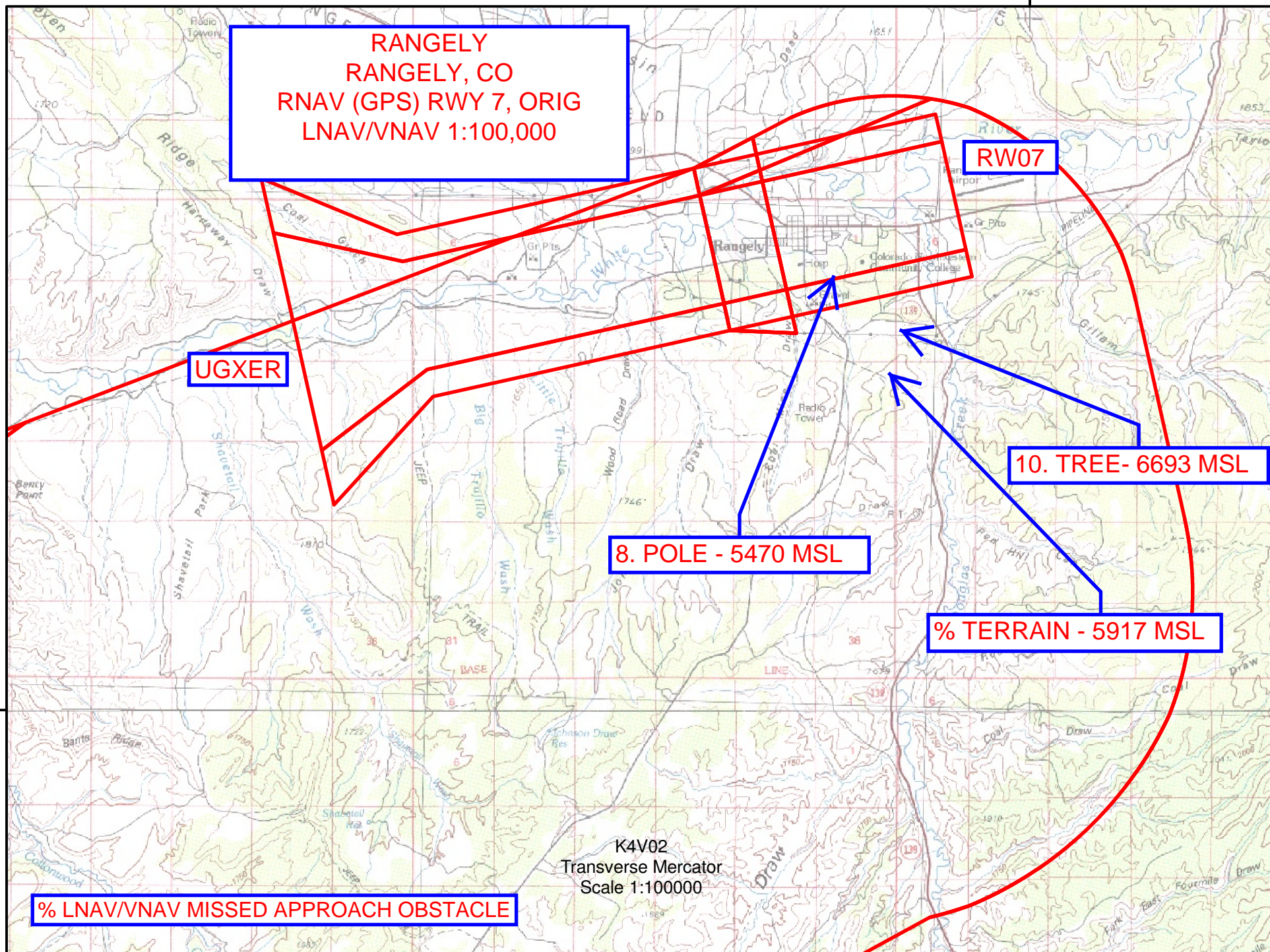
8. POLE - 5470 MSL

% TERRAIN - 5917 MSL

% LNAV/VNAV MISSED APPROACH OBSTACLE

K4V02
Transverse Mercator
Scale 1:100000

40°00'N



108°45'0"W

40°00'N

