

Flight Procedure Tracking Form		Action: FLIGHT CHECK	Task Type: IAP	Date Open: 07/10/2017	Task #: 2014101534276904017	Request #: 20141015342769
Procedure: RNAV (GPS) RWY 6 AMDT 3			Airport ID: PAKU	Airport: UGNU-KUPARUK		Reimbursable #: NO
City: KUPARUK	ST: AK	GPS #:	Estimated Chart Date: 12/07/2017		FICO #:	
Fac ID: N/A		Fac. Type:		Specialist: CHRIS O'BRIEN		
Procedure Review						
	Rec'd	Rel'd	Full Name	Comments		
Lead:	04/20/2017	10/17/2017	JACOB POWERS			
QA:	10/17/2017		Wilson 12/1/2017			
Liaison:						
Procedure Comments:			Remark Type: INFORMATION			
<p>DIGITAL PROCEDURE.</p> <p>ASSIGNED MAG VAR, PAKU OLD 22E, NEW 16E.</p> <p>CONTACT: PATRICK MULQUEEN, MANAGER/JACOB POWERS, LEAD: 405.954.4073/8702</p>						

SPECIAL


KUPARUK, ALASKA

AL-10613

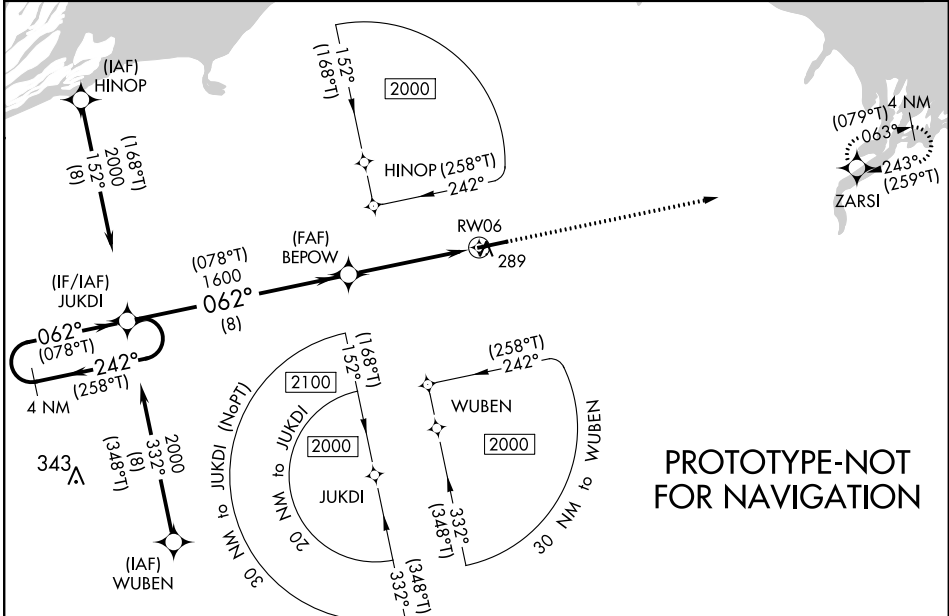
FIG

WAAS CH 50227 W06A	APP CRS 062°	Rwy Idg TDZE Apt Elev	6561 72 75
--	------------------------	-----------------------------	---------------------------------------

RNAV (GPS) RWY 6
UGNU-KUPARUK (UBW)(PAKU)

NA For uncompensated Baro-VNAV systems, LNAV/VNAV NA below -19°C (-2°F) or above 54°C (130°F). DME/DME RNP-0.3 NA. Activate MALSR Rwy 6, HIRLS Rwy 6-24 - 122.80. Use of Ugnu-Kuparuk requires permission of the Owner; Use of this procedure requires specific authorization by FAA Flight Standards.	MALSR 	MISSED APPROACH: Climb to 2000 direct ZARSI and hold.
---	--	--

DEADHORSE ASOS 118.4	ANCHORAGE CENTER XXX.XX	UNICOM 122.8 (CTAF)
--------------------------------	-----------------------------------	-------------------------------



ELEV 75		TDZE 72	
<div>4 NM Holding Pattern</div> <div>JUKDI</div> <div>2000 ← 236° (258°T) 056° (078°T) →</div> <div>GP 3.00° TCH 46</div>		<div><div>2000</div><div>↑</div></div> <div><div>ZARSI</div><div>✦</div></div> <div>* RNAV only</div>	

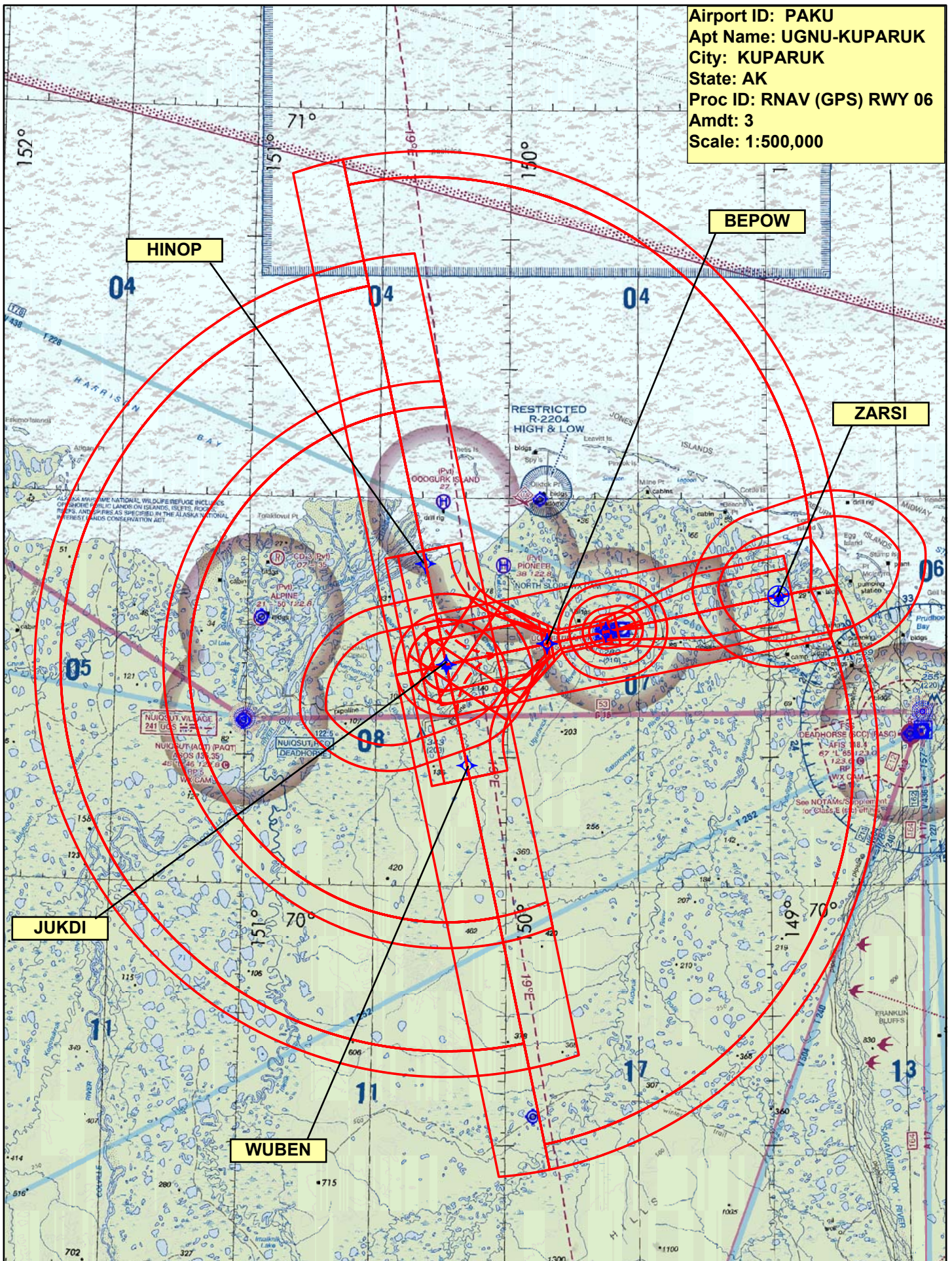
KUPARUK, ALASKA
Amdt 3 FIG

70°20'N-149°36'W

UGNU-KUPARUK (UBW)(PAKU)
RNAV (GPS) RWY 6

SPECIAL

Airport ID: PAKU
Apt Name: UGNU-KUPARUK
City: KUPARUK
State: AK
Proc ID: RNAV (GPS) RWY 06
Amdt: 3
Scale: 1:500,000



Airport ID: PAKU
Apt Name: UGNU-KUPARUK
City: KUPARUK
State: AK
Proc ID: RNAV (GPS) RWY 06
Amdt: 3
Scale: 1:500,000

JUKDI

RESTRICTED R-2204 HIGH & LOW

NUIQSUT VILLAGE
 241 UGS
 NUIQSUT (ACT) (PAQT)
 ASOS 133.35
 45° 12' 46" N 122° 08' W
 HP 5 WK CAM

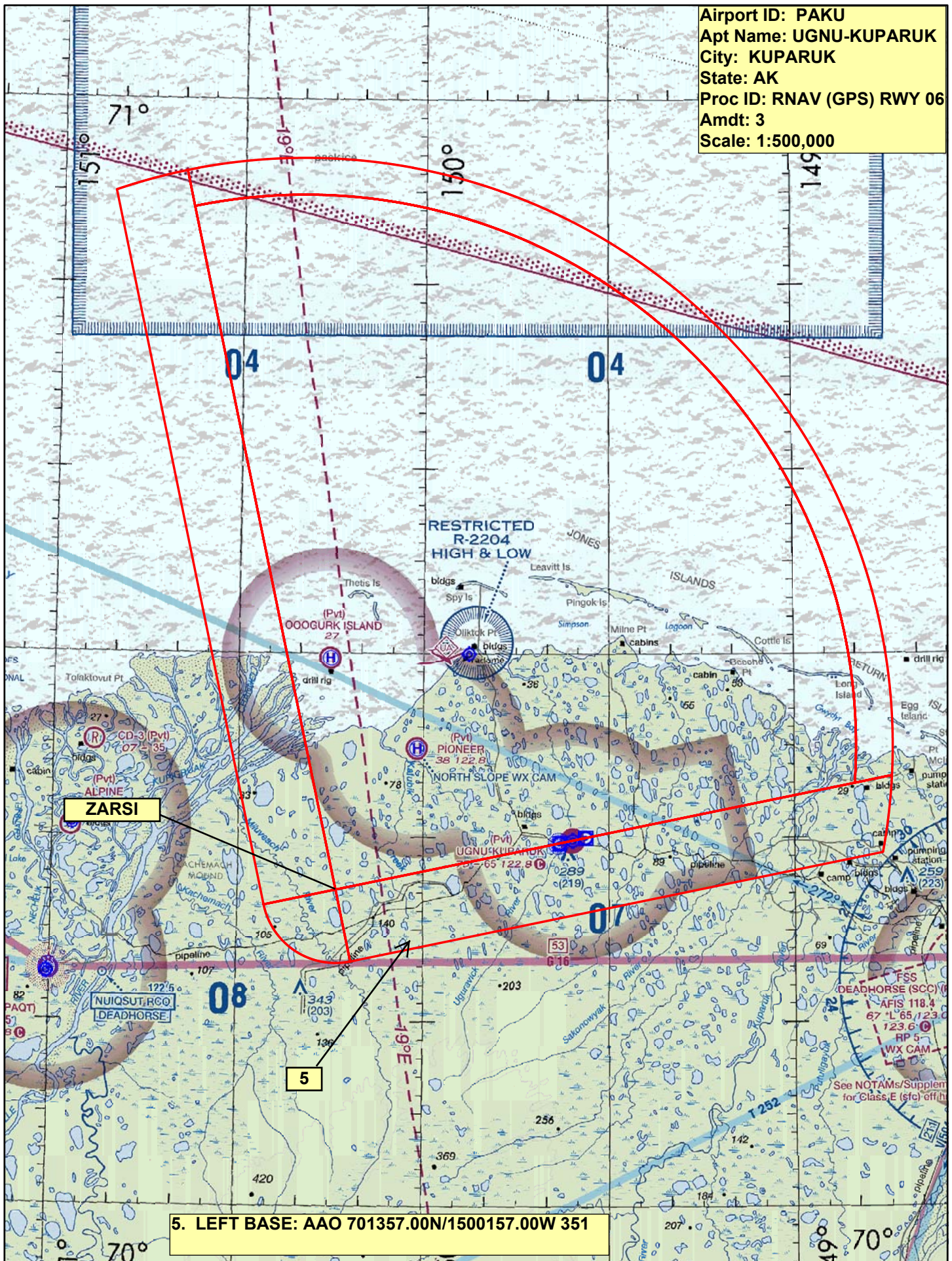
NUIQSUT RCO DEADHORSE

OOGURK ISLAND
 27
 (Pvt) ALPINE 21 50° 122.8
 CD-3 (Pvt) 07 135
 (Pvt) PIONEER 38 122.8
 UGNU-KUPARUK 75 165° 122.8

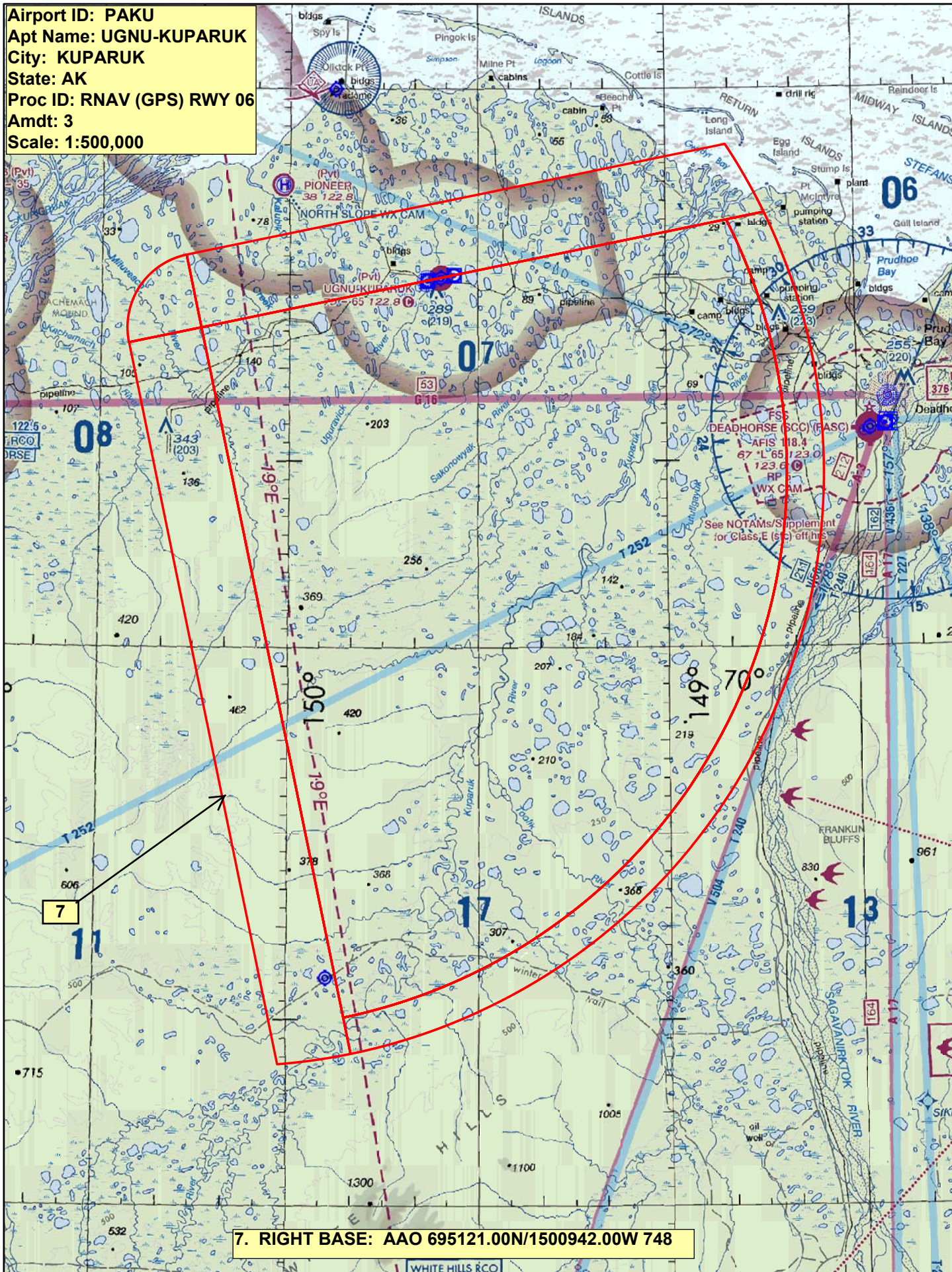
1. STRAIGHT-IN: AAO 694742.00N/1503300.00W 834
3. STRAIGHT-IN: AAO 695600.00N/1502118.00W 716

- [illegible]

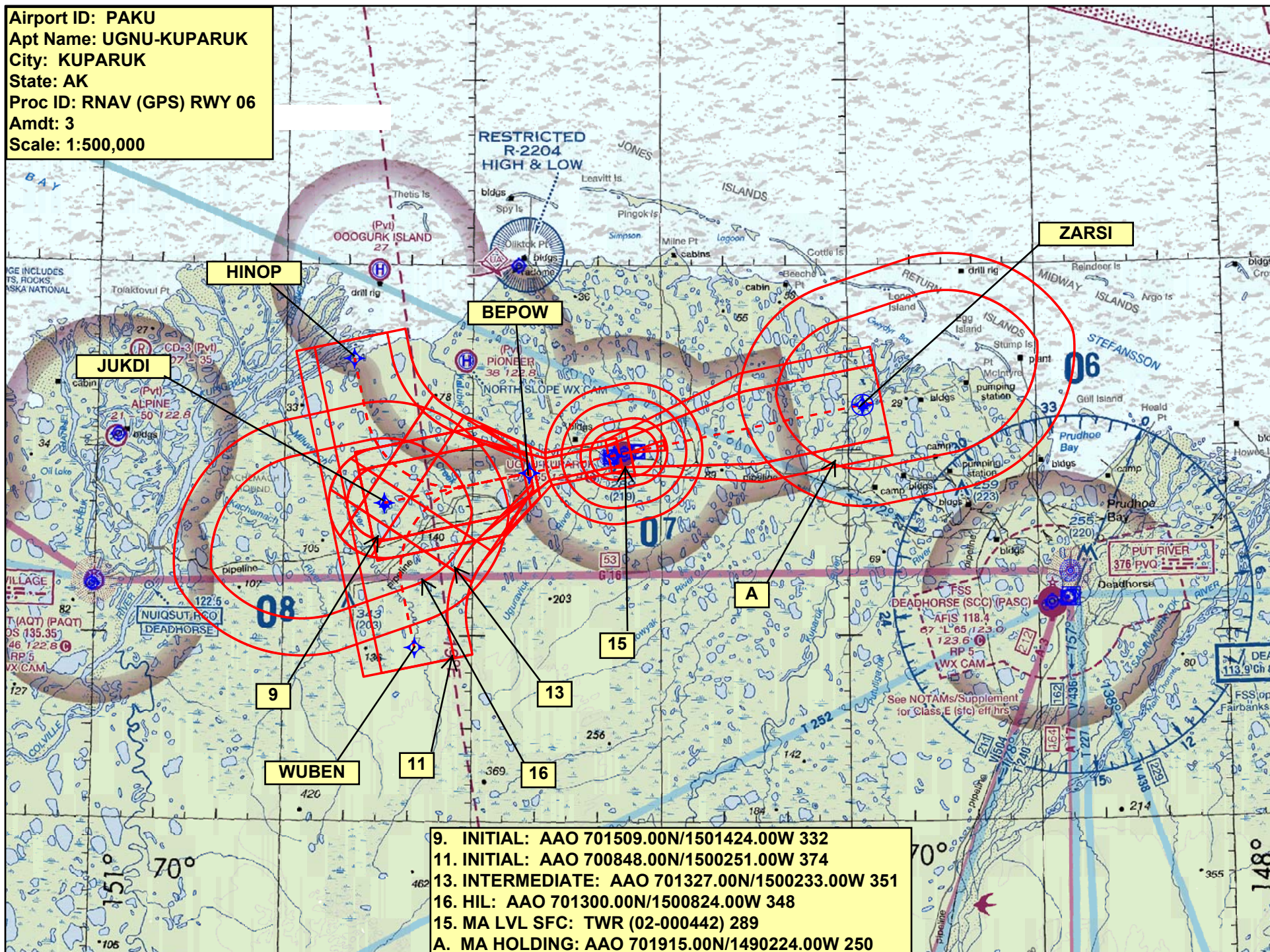
Airport ID: PAKU
Apt Name: UGNU-KUPARUK
City: KUPARUK
State: AK
Proc ID: RNAV (GPS) RWY 06
Amdt: 3
Scale: 1:500,000



Airport ID: PAKU
Apt Name: UGNU-KUPARUK
City: KUPARUK
State: AK
Proc ID: RNAV (GPS) RWY 06
Amdt: 3
Scale: 1:500,000



Airport ID: PAKU
 Apt Name: UGNU-KUPARUK
 City: KUPARUK
 State: AK
 Proc ID: RNAV (GPS) RWY 06
 Amdt: 3
 Scale: 1:500,000



149°45'0"W

149°30'0"W

149°15'0"W

PAKU: KUPARUK, AK
RNAV (GPS) RWY 06, Amdt 3

15. TWR LNAV Final 289

15. TWR Circling (Cats A-D) 289

15. TWR MA LVL SFC 289

RW06

BEPOW

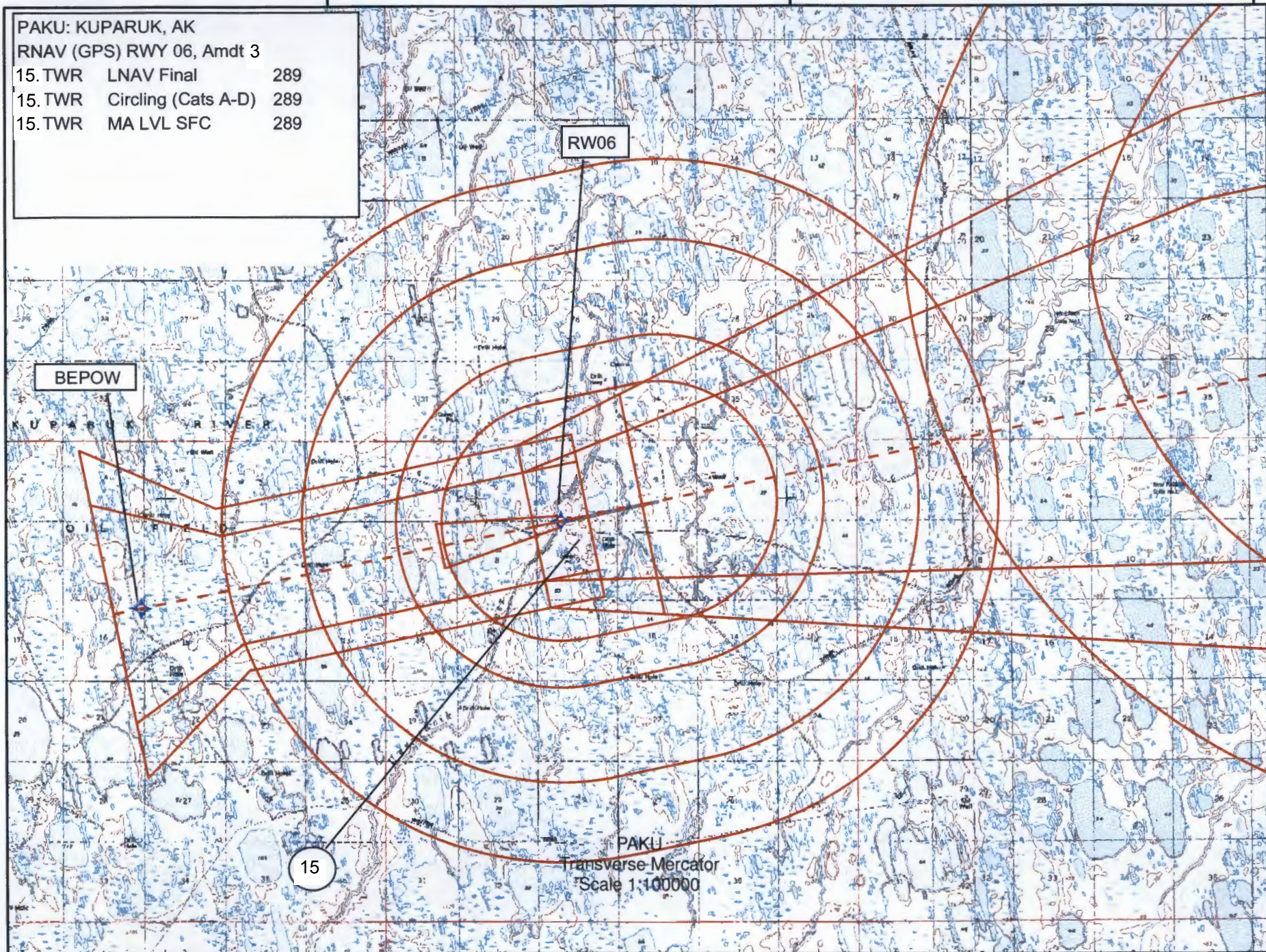
KUPARUK RIVER

GIL

PAKU

Transverse Mercator
Scale 1:100000

15

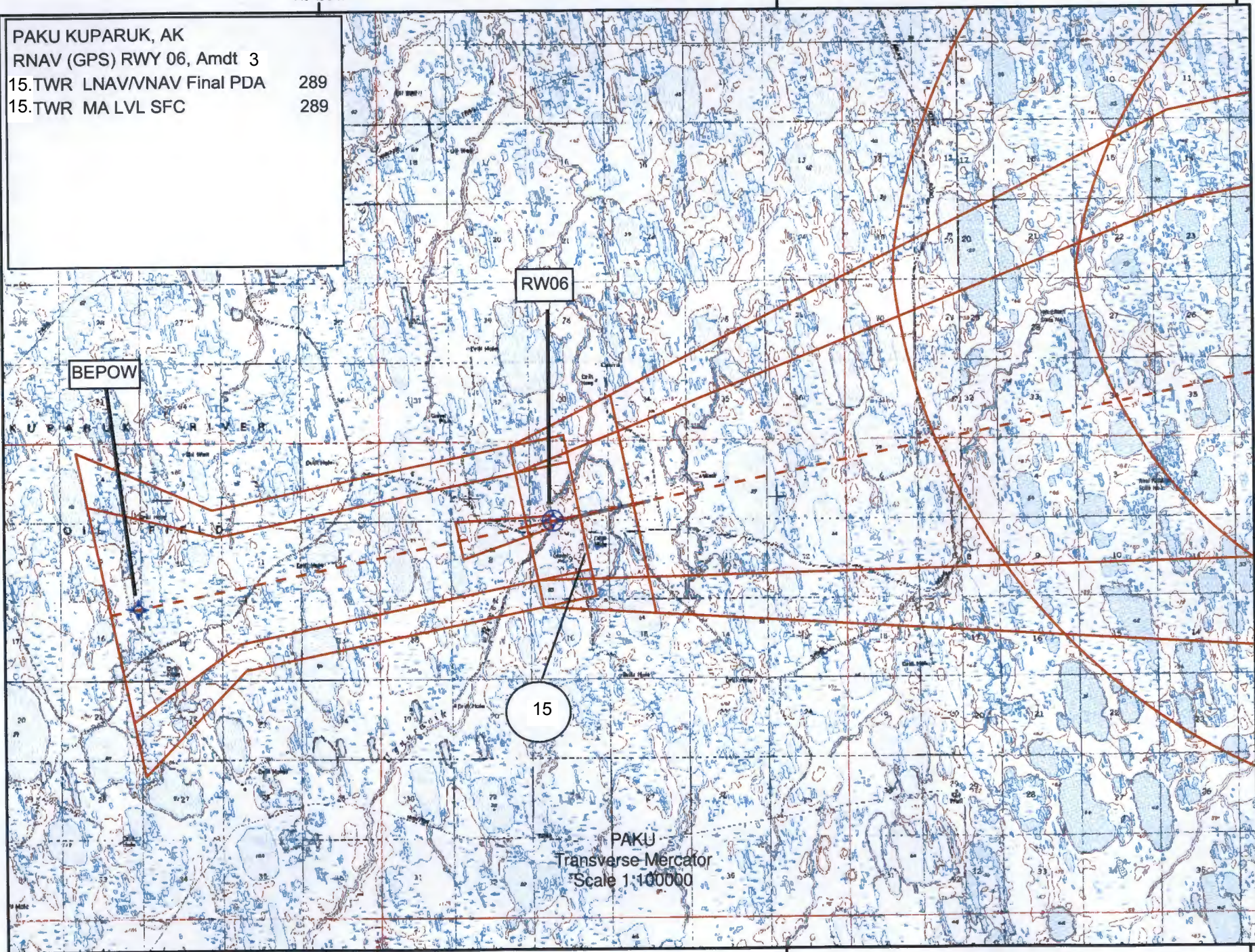


149°45'0"W

149°30'0"W

149°15'0"W

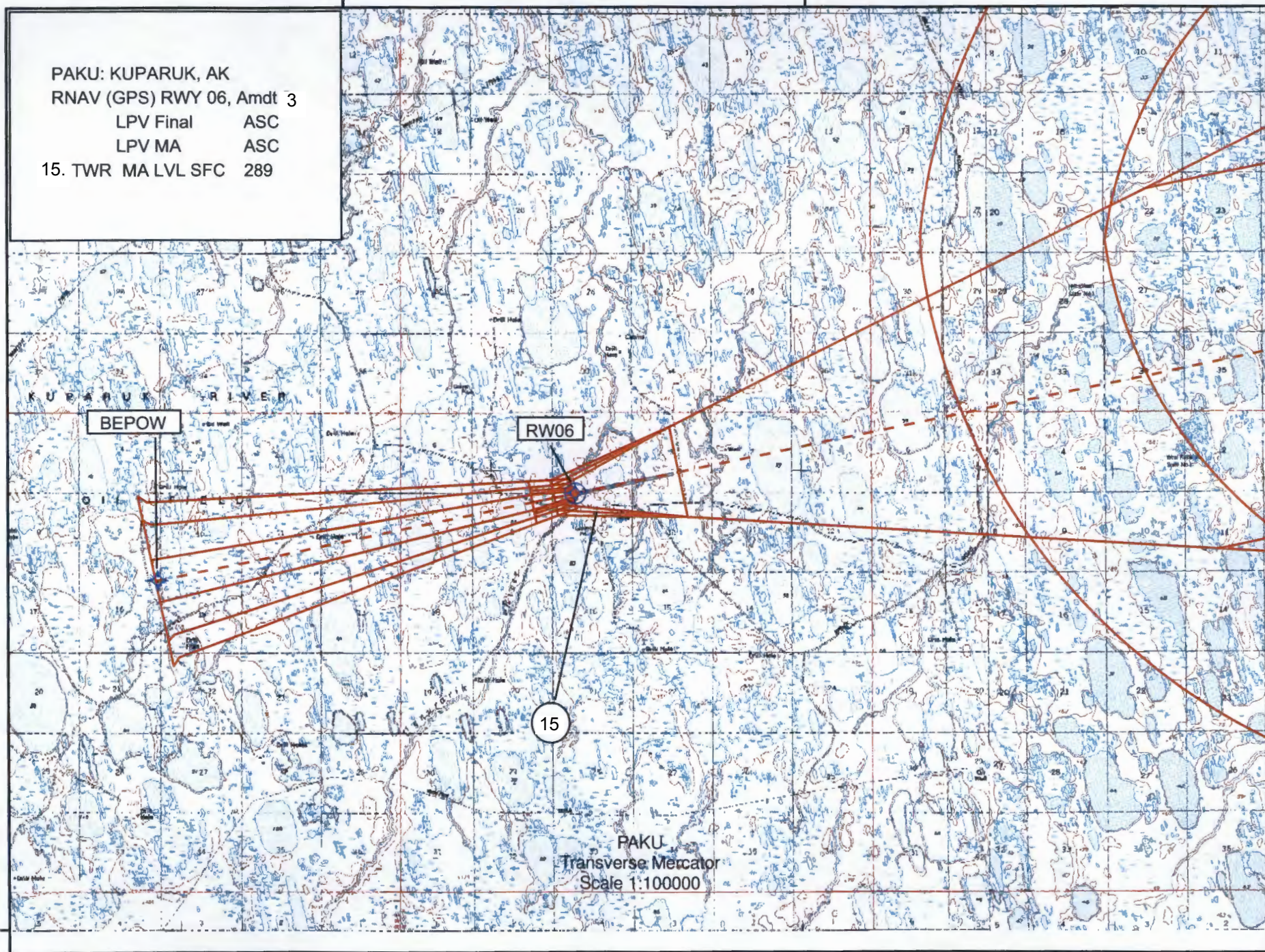
PAKU KUPARUK, AK
RNAV (GPS) RWY 06, Amdt 3
15.TWR LNAV/VNAV Final PDA 289
15.TWR MA LVL SFC 289



149°45'0"W

149°30'0"W

PAKU: KUPARUK, AK
RNAV (GPS) RWY 06, Amdt 3
LPV Final ASC
LPV MA ASC
15. TWR MA LVL SFC 289



70°15'0"N

TERMINAL AIRSPACE DATA REQUIREMENTS

City: KUPARUK Airport Name: UGNU-KUPARUK Procedure: RNAV (GPS) RWY 6 Docket #:	State: AK ID: PAKU Amendment: AMDT 3
ALL DIST TO 1/100 NM; ELEV TO NEAREST FT; COORD TO 1/100 SEC; DEG TO 1/100 DG.	
1. Distance from 2. Width of 3. True Course of 4. High Terrain in 5. Distance from 6. Width of 7. True Course of 8. High Terrain in 9. Threshold Coordinates (if straight-in) 10. ARP Coordinates 11. Runway Approach End and distance furthest from ARP: Runway 06 Distance 0.54 NM 12. FAF Coordinates	THLD to 1000' point 3.08 FINAL segment at 1000' point 1.20 FINAL segment containing 1000' point 078.16 FINAL segment containing 1000' point 109 THLD to 1500' point 4.67 FINAL segment at 1500' point 2.13 FINAL segment containing 1500' point 078.16 FINAL segment containing 1500' point 109 70 19 43.97 N / 149 37 26.71 W 70 19 50.40 N / 149 35 53.00 W 70 18 47.23 N / 149 50 57.21 W
Remarks: IF/IAF JUKDI 701707.66N/1501403.24W 332/30 CW 152/30 IAF HINOP 702454.87N/1501904.47W 152/30 CW 242/30 IAF WUBEN 700920.30N/1500905.79W 242/30 CW 332/30	

1. FLIGHT PROCEDURE IDENTIFICATION:

UGNU-KUPARUK, AK
KUPARUK (UBW)(PAKU)
RNAV (GPS) RWY 06

2. WAIVER REQUIRED AND APPLICABLE STANDARD:

TO PERMIT VISIBILITY LESS THAN 3/4 MILE WITH NO PARALLEL TAXIWAY.

8260.3C CHAPTER 3 PARA 3-3-2D.

3. REASON FOR WAIVER (JUSTIFICATION FOR NONSTANDARD TREATMENT):

PAKU DOES NOT HAVE A PARALLEL TAXIWAY. APPROVAL OF THIS WAIVER WILL ALLOW MINIMUM VISIBILITY. DISAPPROVAL WOULD REQUIRE AN INCREASE TO ALL VISIBILITIES AND WOULD RESTRICT AIRCRAFT OPERATIONS DUE TO SEA FOG EXISTING AS A COMMON WEATHER FEATURE ON THE NORTHERN COAST.

4. EQUIVALENT LEVEL OF SAFETY PROVIDED:

1. UGNU-KUPARUK (PAKU) IS A PRIVATE AIRPORT CONTROLLED 24 HOURS A DAY BY CONOCO PHILLIPS.
2. ALL USERS RECEIVE SPECIFIC TRAINING FOR THE PROCEDURE AND AIRPORT OPERATIONS. FLIGHTS TO AND FROM (PAKU) ARE LIMITED TO ONE AIRCRAFT OPERATION IN THE TERMINAL ENVIRONMENT AT ANY GIVEN TIME.

5. ALTERNATIVE ACTIONS DEEMED NOT FEASIBLE:

CONSTRUCTING A PARALLEL TAXIWAY IS NOT DESIRED BY THE AIRPORT OPERATOR.

6. COORDINATION WITH USER ORGANIZATIONS (SPECIFY):

7. SUBMITTED BY:

DATE OFFICE IDENTIFICATION TITLE

SIGNATURE

8. AFS ACTIONS:

☐ APPROVED ☐ DISAPPROVED ☐ NOT REQUIRED

COMMENTS:

DATE ROUTING SYMBOL SIGNATURE