

<b>Flight Procedure Tracking Form</b>		<b>Action:</b> FLIGHT CHECK	<b>Task Type:</b> IAP	<b>Date Open:</b> 07/08/2015	<b>Task #:</b> 2014101534276901005	<b>Request #:</b> 20141015342769
<b>Procedure:</b> VOR Z RWY 24 AMDT 5			<b>Airport ID:</b> PASC	<b>Airport:</b> DEADHORSE		<b>Reimbursable #:</b> NO
<b>City:</b> DEADHORSE	<b>ST:</b> AK	<b>GPS #:</b>	<b>Estimated Chart Date:</b> 10/12/2017		<b>FICO #:</b>	
<b>Fac ID:</b> SCC		<b>Fac. Type:</b> VOR_DME			<b>Specialist:</b> KELLY DEAN	
<b>Procedure Review</b>						
	<b>Rec'd</b>	<b>Rel'd</b>	<b>Full Name</b>	<b>Comments</b>		
<b>Lead:</b>	01/17/2017					
<b>QA:</b>		6/9, 6/22	CLARK			
<b>Liaison:</b>						
<b>Procedure Comments:</b> ENROUTE-NON <b>Remark Type:</b> INFORMATION						
MAG/VAR: OLD: 23E 2010 NEW: 17E 2020  POC FOR THIS ACTIONS IS DON LANIER 405-954-8242						



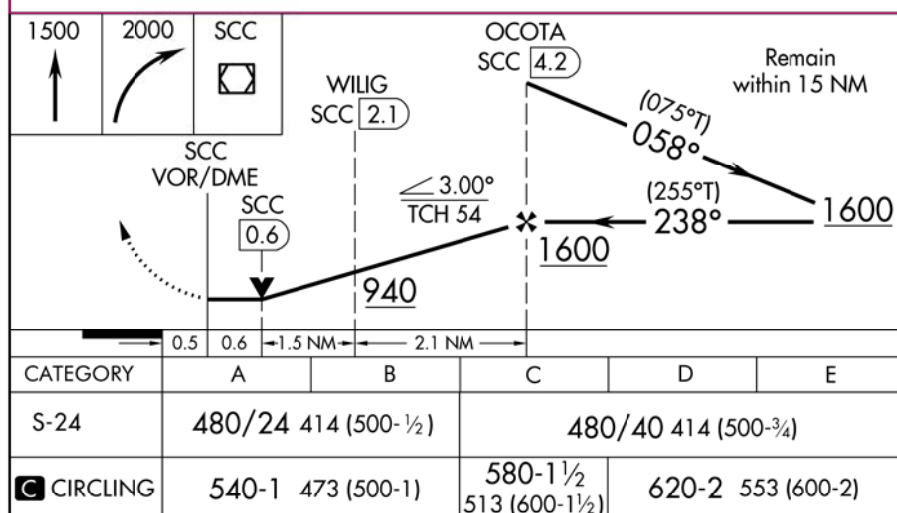
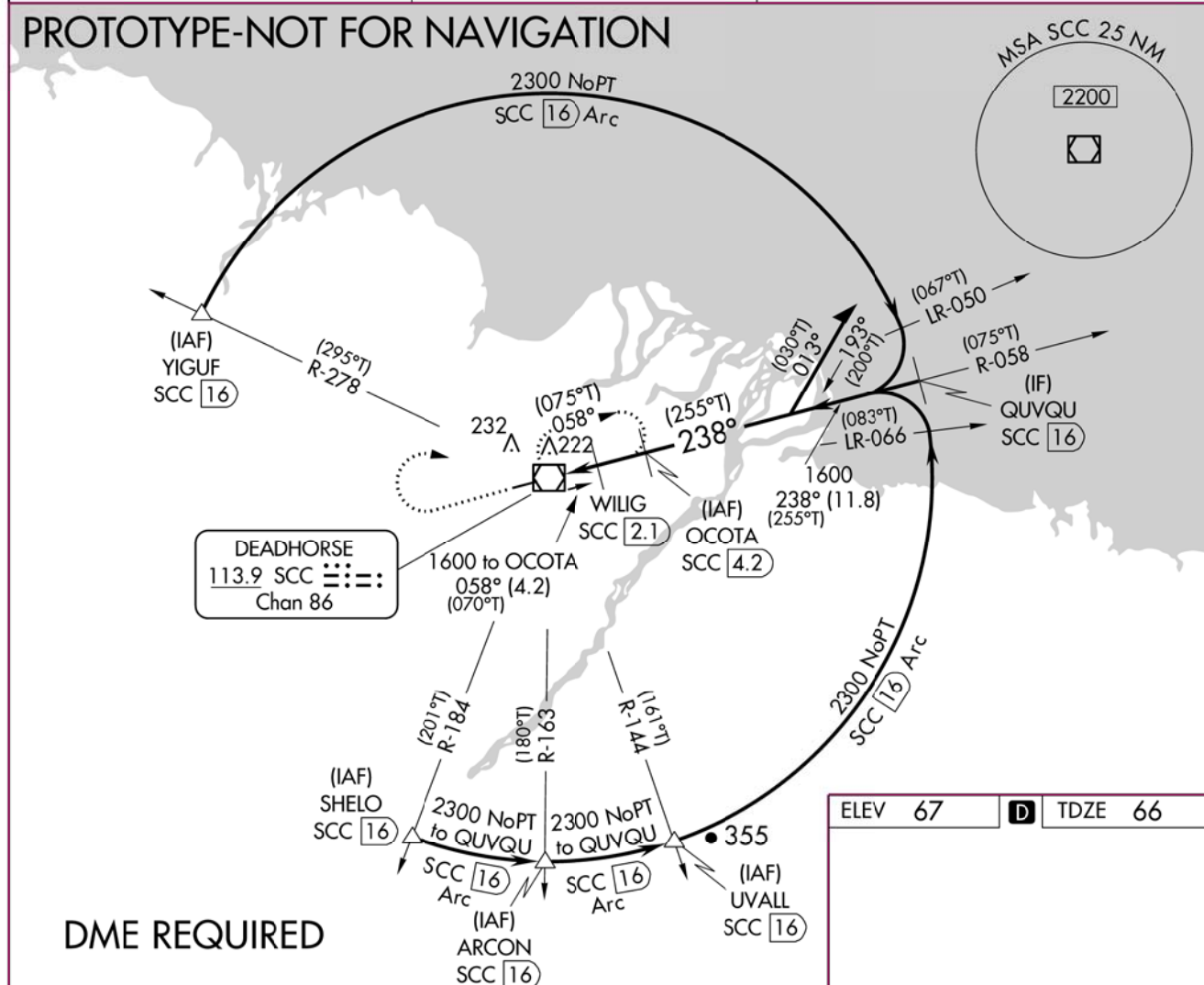
VOR/DME SCC	APP CRS	Rwy Idg	6500
<b>113.9</b>	<b>238°</b>	TDZE	<b>66</b>
Chan <b>86</b>		Apt Elev	<b>67</b>

# VOR Z RWY 24

## DEADHORSE (SCC) (PASC)

<b>T</b> DME Required. For inop ALS, increase Cats C/D/E visibility to RVR 6000.	MALSR 	MISSED APPROACH: Climb to 1500 then climbing right turn to 2000 direct SCC VOR/DME and hold, continue climb-in-hold to 2000.
--	-----------	--

AFIS <b>118.4</b>	ANCHORAGE CENTER <b>134.4 370.9</b>	DEADHORSE RADIO <b>123.6 (CTAF) 1</b>
----------------------	--	--




ELEV 67	<b>D</b>	TDZE 66
238° 4.7 NM from FAF Remain within 15 NM 1600 940 0.5 0.6 1.5 NM 2.1 NM CATEGORY A B C D E S-24 480/24 414 (500-½) 480/40 414 (500-¾) CIRCLING 540-1 473 (500-1) 580-1½ 513 (600-1½) 620-2 553 (600-2) HIRL Rwy 6-24 1		

VOR/DME SCC	APP CRS	Rwy Idg	6500
113.9	232°	TDZE	66
Chan 86		Apt Elev	67

VOR/DME RWY 23  
DEADHORSE (SCC) (PASC)

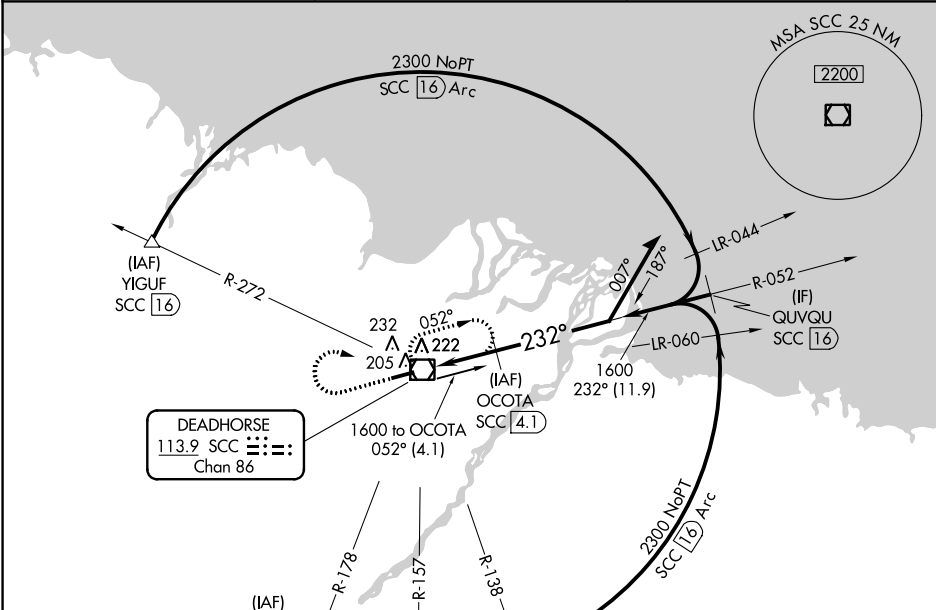
**⚠**  
**⚠**  
**⚠** -45°C/-49°F

For inop MALSR, increase S-23 Cat D visibility to RVR 6000 and Cat E visibility to 1½ mile. When using Nuiqsut altimeter setting, inop table does not apply. When local altimeter setting not received, use Nuiqsut altimeter setting and increase all MDAs 140 feet, and all visibilities 1 mile. VDP NA when using Nuiqsut altimeter setting.

**MALSR**  


**MISSED APPROACH:** Climb to 1500 then climbing right turn to 2000 direct SCC VOR/DME and hold.

AFIS 118.4	ANCHORAGE CENTER 134.4 370.9	DEADHORSE RADIO 123.6 (CTAF) <b>0</b>
---------------	---------------------------------	--



1500 2000 SCC

↑ ↻

SCC VOR/DME

SCC 0.7

3.04° TCH 51

0.5 0.7 3.4 NM

OCOTA SCC 4.1

Remain within 15 NM

052°

232°

1600

CATEGORY	A	B	C	D	E
S-23	480/24 414 (500-½)		480/40 414 (500-¾)	480/50 414 (500-1)	
CIRCLING	540-1 473 (500-1)		540-1½ 473 (500-1½)	620-2 553 (600-2)	

ELEV 67 **D** TDZE 66

205

232° 4.6 NM from FAF

6500 X 150

5 23 45

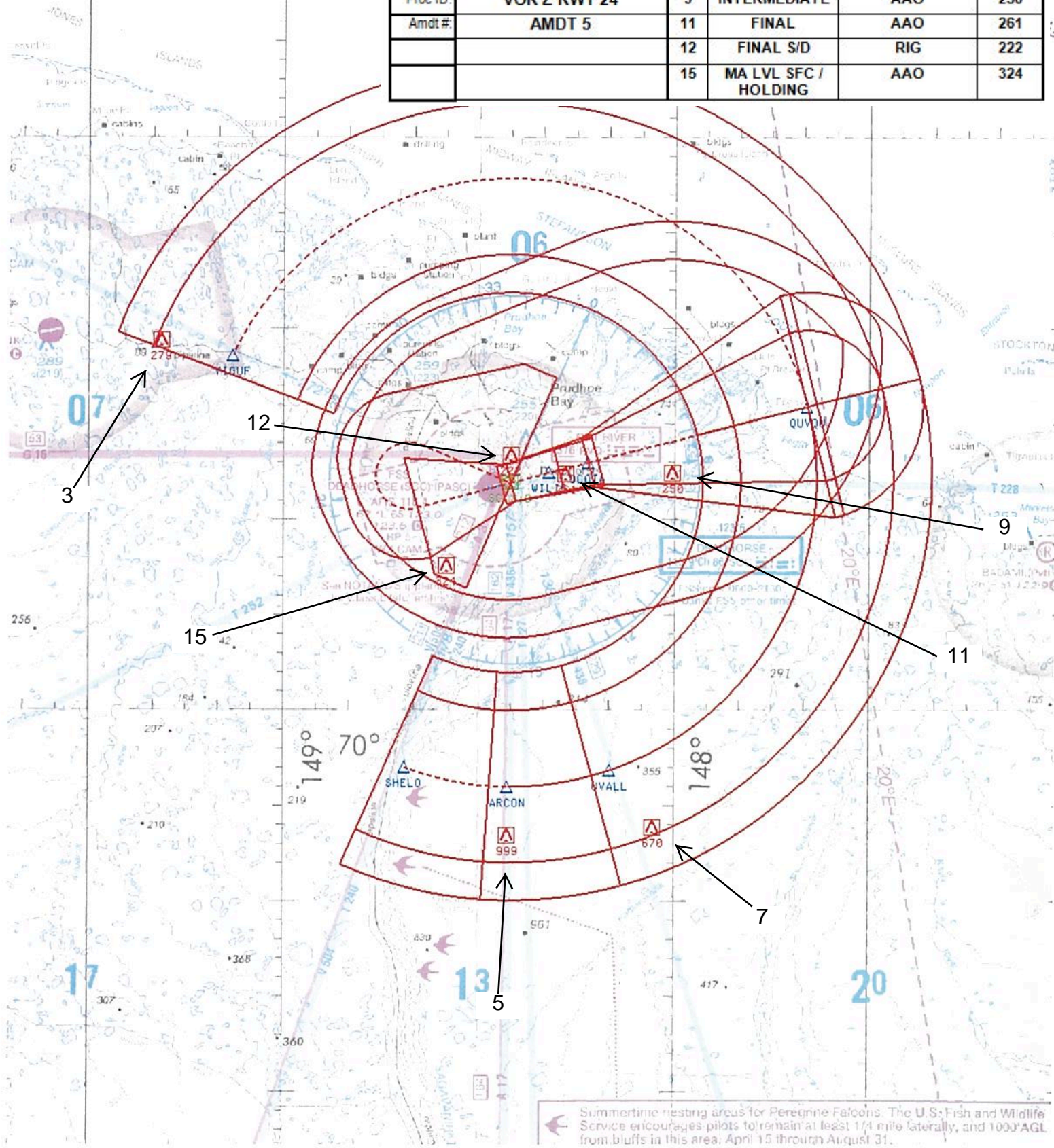
HIRL Rwy 5-23 **0**

AK, 27 APR 2017 to 22 JUN 2017

AK, 27 APR 2017 to 22 JUN 2017

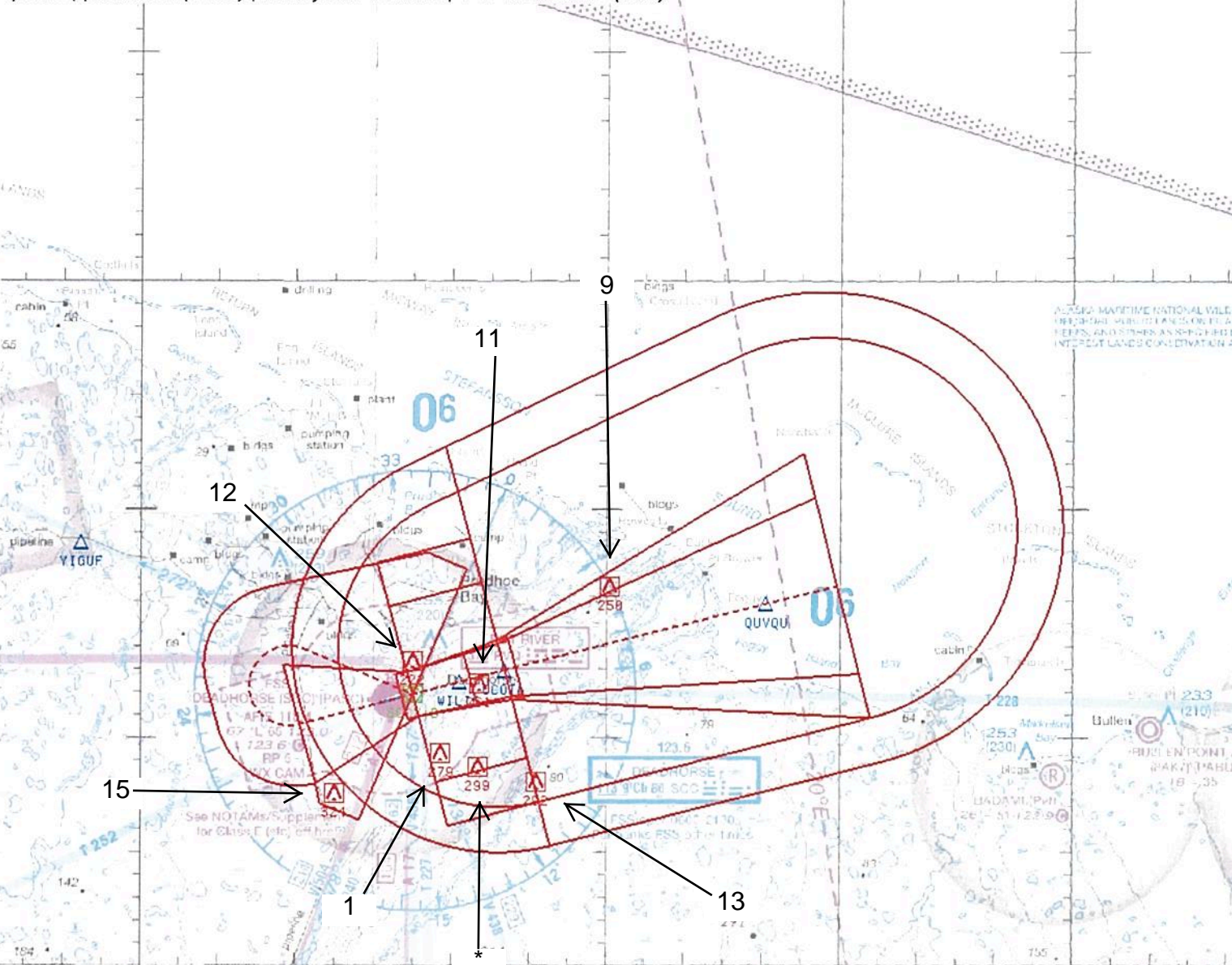


Airport ID:	PASC	FM 9			
Apt Name:	DEADHORSE	No	SEGMENT	OBSTRUCTION	ELEV
City:	DEADHORSE	3	YIGUF ARC	AAO	279
State:	AK	5	ARCON AND SHELO ARC	AAO	999
Scale:	1:500,000	7	UVALL ARC	AAO	670
Proc ID:	VOR Z RWY 24	9	INTERMEDIATE	AAO	250
Amdt #:	AMDT 5	11	FINAL	AAO	261
		12	FINAL S/D	RIG	222
		15	MA LVL SFC / HOLDING	AAO	324



← Summertime nesting areas for Peregrine Falcons. The U.S. Fish and Wildlife Service encourages pilots to remain at least 1/4 mile laterally, and 1000' AGL from bluffs in this area, April 15 through August 31.





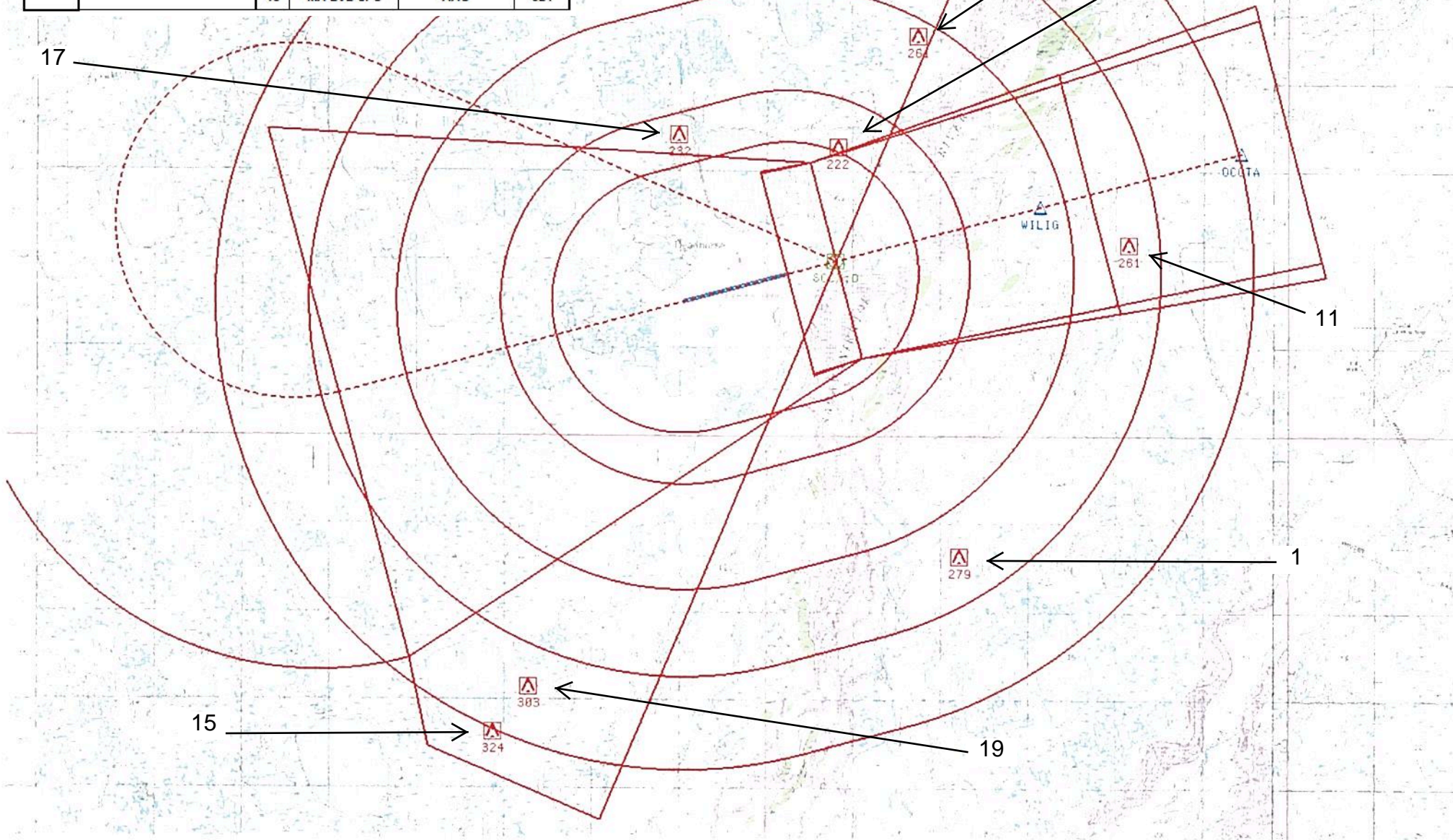
Airport ID:	PASC	FM 9			
Apt Name:	DEADHORSE	No	SEGMENT	OBSTRUCTION	ELEV
City:	DEADHORSE	1	FEEDER	AAO	279
State:	AK	*	PT ENTRY	AAO	299
Scale:	1:500,000	13	PT INITIAL	AAO	292
Proc ID:	VOR Z RWY 24	9	PT INTERM	AAO	250
Amdt #:	AMDT 5	11	FINAL	AAO	261
		12	FINAL S/D	RIG	222
		15	MA LVL SFC	AAO	324

Summertime nesting areas for Peregrine Falcons. The U.S. Fish and Wildlife Service encourages pilots to remain at least 1/4 mile laterally, and 1000' AGL from bluffs in this area. April 15 through August 31.



NM 1 2 3 4 5 6 7 8 9 10 11 12 13 14  
FT 8000 16000 24000 32000 40000 48000 56000 64000 72000 80000  
fpokdd | pascvorz24 (PROD) | 24 May 2017 12:11:02 | 1" = 8333.3 feet (MAP)

Airport ID:	PASC	FM 9			
Apt Name:	DEADHORSE	No	SEGMENT	OBSTRUCTION	ELEV
City:	DEADHORSE	11	FINAL	AAO	261
State:	AK	12	FINAL S/D / CIRC CAT A	RIG	222
Scale:	1:100,000	17	CIRC CAT B	RIG	232
Proc ID:	VOR Z RWY 24	18	CIRC CAT C	ANT	261
Amdt #:	AMDT 5	1	CIRC CAT D	AAO	279
		19	CIRC CAT E	AAO	303
		15	MA LVL SFC	AAO	324



# TERMINAL AIRSPACE DATA REQUIREMENTS

CITY:

STATE:

AIRPORT NAME:

ID:

PROCEDURE:

AMDT:

DOCKET # :

(96-AXX-X/Required/Not Required)

**ALL DIST TO 1/100 NM; ELEV TO NEAREST FT; COORD TO 1/100 SEC; DEG TO 1/100 DG.**

1. Distance from \_\_\_\_\_ to 1000' point \_\_\_\_\_

(Enter THLD, FAF, ARP, FACILITY, as appropriate)

2. Width of \_\_\_\_\_ segment at 1000' point \_\_\_\_\_

(Enter appropriate segment , final, intermediate, etc.)

3. True Course of \_\_\_\_\_ segment containing 1000' point \_\_\_\_\_

4. High Terrain in \_\_\_\_\_ segment containing 1000' point \_\_\_\_\_

5. Distance from \_\_\_\_\_ to 1500' point \_\_\_\_\_

(If 1500' point in PT maneuvering area or holding pattern note in remarks)

6. Width of \_\_\_\_\_ segment at 1500' point \_\_\_\_\_

7. True Course of \_\_\_\_\_ segment containing 1500' point \_\_\_\_\_

8. High Terrain in \_\_\_\_\_ segment containing 1500' point \_\_\_\_\_

9. Threshold Coordinates (if straight-in) ... \_\_\_\_\_ / \_\_\_\_\_

10. ARP Coordinates ..... \_\_\_\_\_ / \_\_\_\_\_

11. Runway Approach End and distance furthest from ARP.....RWY \_\_\_\_\_

Distance \_\_\_\_\_ NM

12. FAF Coordinates ..... \_\_\_\_\_ / \_\_\_\_\_

(Click to Select)

**REMARKS:**