


Flight Procedure Tracking Form		Action: FLIGHT CHECK	Task Type: IAP	Date Open: 10/15/2014	Task #: 2014101534276901001	Request #: 20141015342769
Procedure: ILS OR LOC RWY 6 AMDT 3				Airport ID: PASC	Airport: DEADHORSE	Reimbursable #: NO
City: DEADHORSE	ST: AK	GPS #:	Estimated Chart Date: 10/12/2017		FICO #:	
Fac ID: SCC		Fac. Type: ILS			Specialist: KELLY DEAN	
Procedure Review						
	Rec'd	Rel'd	Full Name	Comments		
Lead:	01/17/2017					
QA:		6/12, 6/21	CLARK			
Liaison:						
Procedure Comments:			NON-ENROUTE	Remark Type: INFORMATION		
MAG/VAR: OLD: E23 2010 NEW: E17 2020 POC FOR THIS ACTION IS DON LANIER: 405-954-8242						

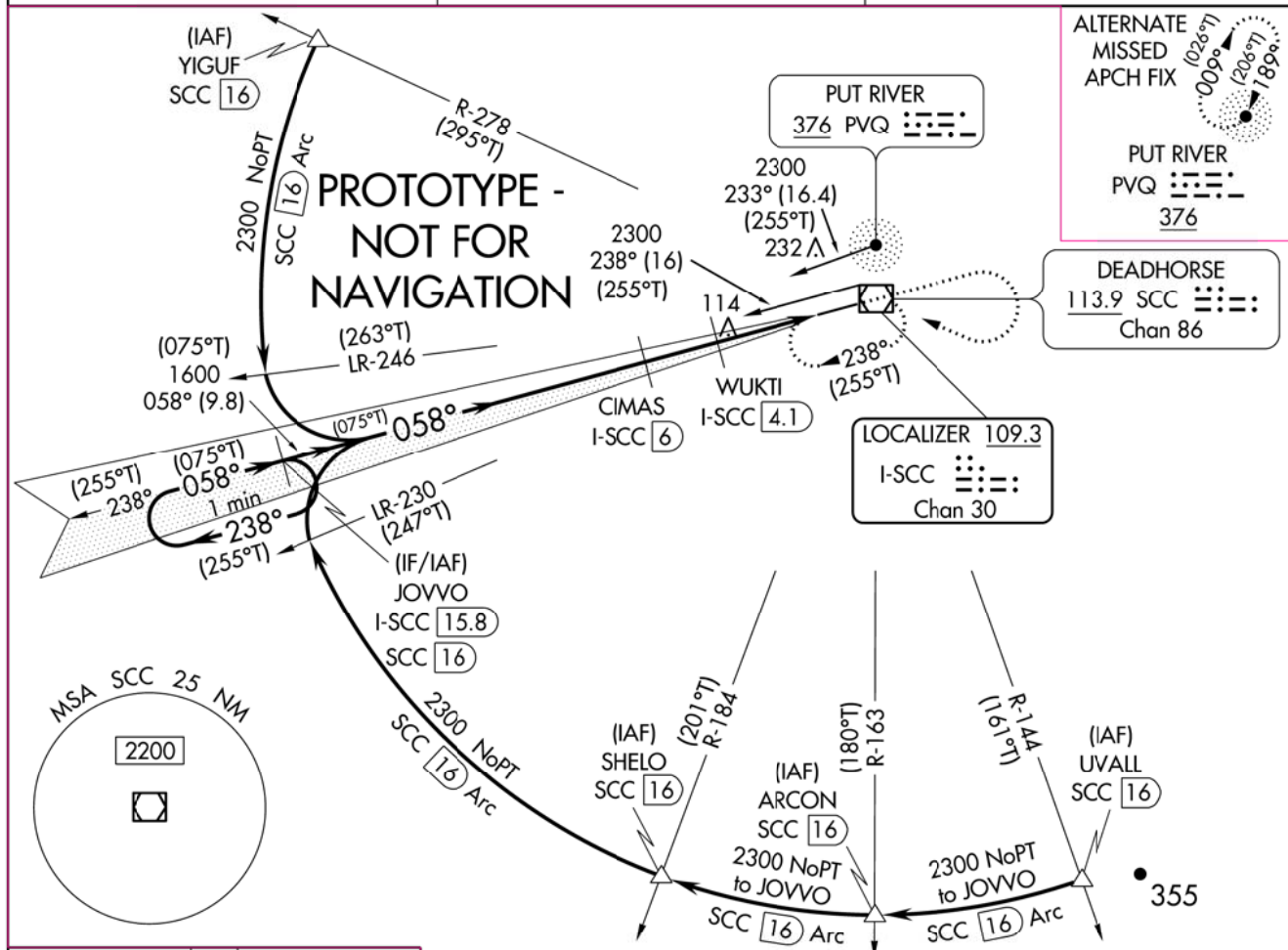



LOC/DME I-SCC 109.3 Chan 30	APP CRS 058°	Rwy Idg 6500 TDZE 67 Apt Elev 67
---	------------------------	---

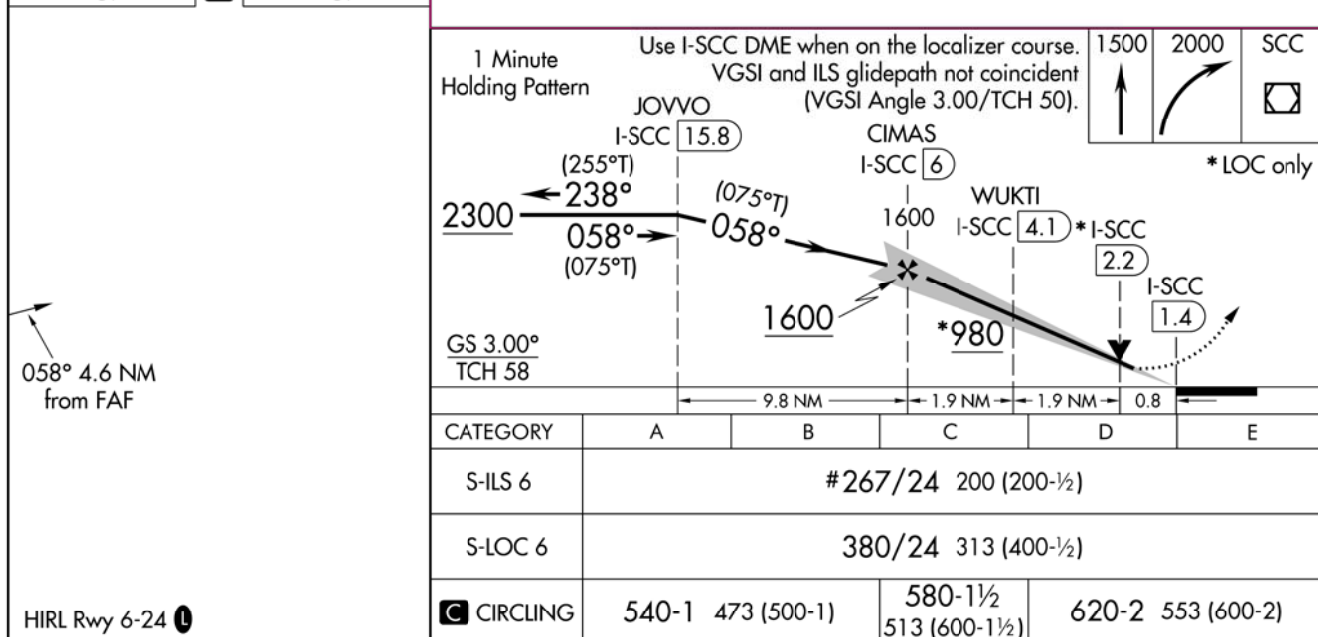
ILS or LOC RWY 6 DEADHORSE (SCC) (PASC)

<p>T DME required. For inop ALS, increase S-ILS 6 Cat E visibility to RVR 4000 and S-LOC 6 Cats C/D/E visibility to RVR 4500. A # RVR 1800 authorized with use of FD or AP or HUD to DA. ❄ -45°C</p>	<p>MALSR </p>	<p>MISSED APPROACH: Climb to 1500 then climbing right turn to 2000 direct SCC VOR/DME and hold.</p>
---	---	---

AFIS 118.4	ANCHORAGE CENTER 134.4 370.9	DEADHORSE RADIO 123.6 (CTAF) 0
----------------------	--	--



ELEV 67	D TDZE 67
---------	------------------



LOC/DME I-SCC 109.3 Chan 30	APP CRS 052°	Rwy Idg 6500 TDZE 67 Apt Elev 67
--	------------------------	---

ILS or LOC/DME RWY 5
DEADHORSE (SCC) (PASC)

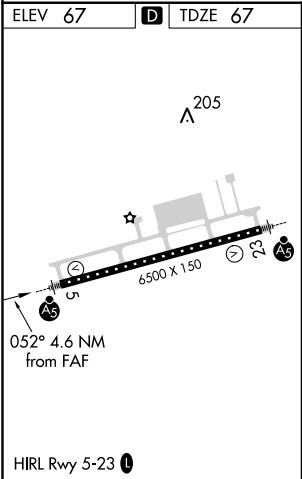
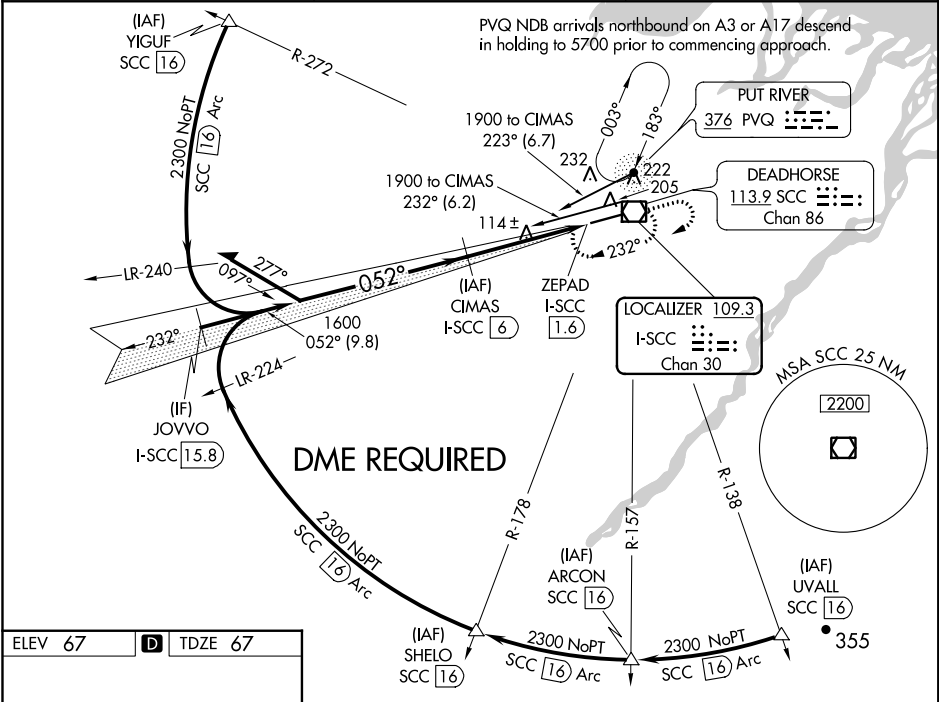
⚠ When local altimeter setting not received, use Nuiqsut altimeter setting and increase all DAs/MDAs 140 feet and all visibilities $\frac{3}{4}$ mile. For inop MALS, increase S-ILS 5 Cat E visibility to RVR 4000 and S-LOC 5 Cats D and E visibility to RVR 5000. When using Nuiqsut altimeter setting, inop table does not apply. VDP NA when using Nuiqsut altimeter setting. Use I-SCC DME when on localizer course. * Visibility Cats A/B/C/D, RVR 1800 authorized with the use of FD or AP or HUD to DA.

MALS

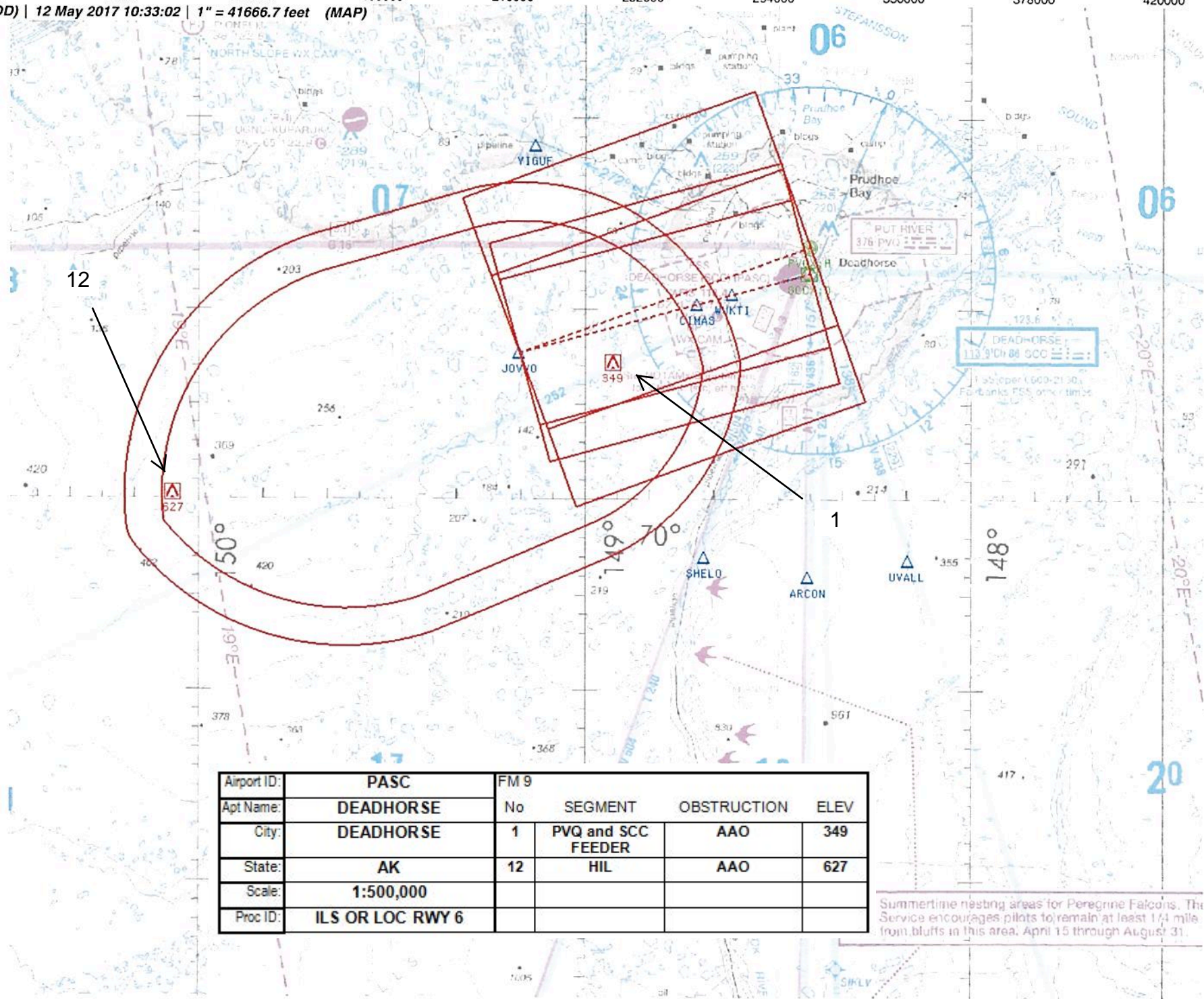
AS

MISSED APPROACH:
Climb to 1500 then climbing right turn to 2000 direct SCC VOR/DME and hold.

AFIS 118.4	ANCHORAGE CENTER 134.4 370.9	DEADHORSE RADIO 123.6 (CTAF) 0
----------------------	--	--



<div>Remain within 15 NM</div> <div>1900</div> <div>GS 3.00° TCH 55°</div>	<div>CIMAS I-SCC 6</div>				<div>1500</div> <div>↑</div>	<div>2000</div> <div>↷</div>	<div>SCC</div> <div>◻</div>
	<div>232°</div> <div>052°</div> <div>1600</div> <div>1600</div> <div>1600</div>				<div>I-SCC 2.2</div>	<div>ZEPAD</div>	<div>I-SCC 1.6</div>
	<div>3.8 NM</div> <div>0.6</div> <div>0.2</div>				<div>↘</div>		
CATEGORY	A	B	C	D	E		
S-ILS 5	*267/24 200 (200-½)						
S-LOC 5	380/24 313 (400-½)				380/40 313 (400-¾)		
CIRCLING	540-1 473 (500-1)		540-1½ 473 (500-1½)		620-2 553 (600-2)		

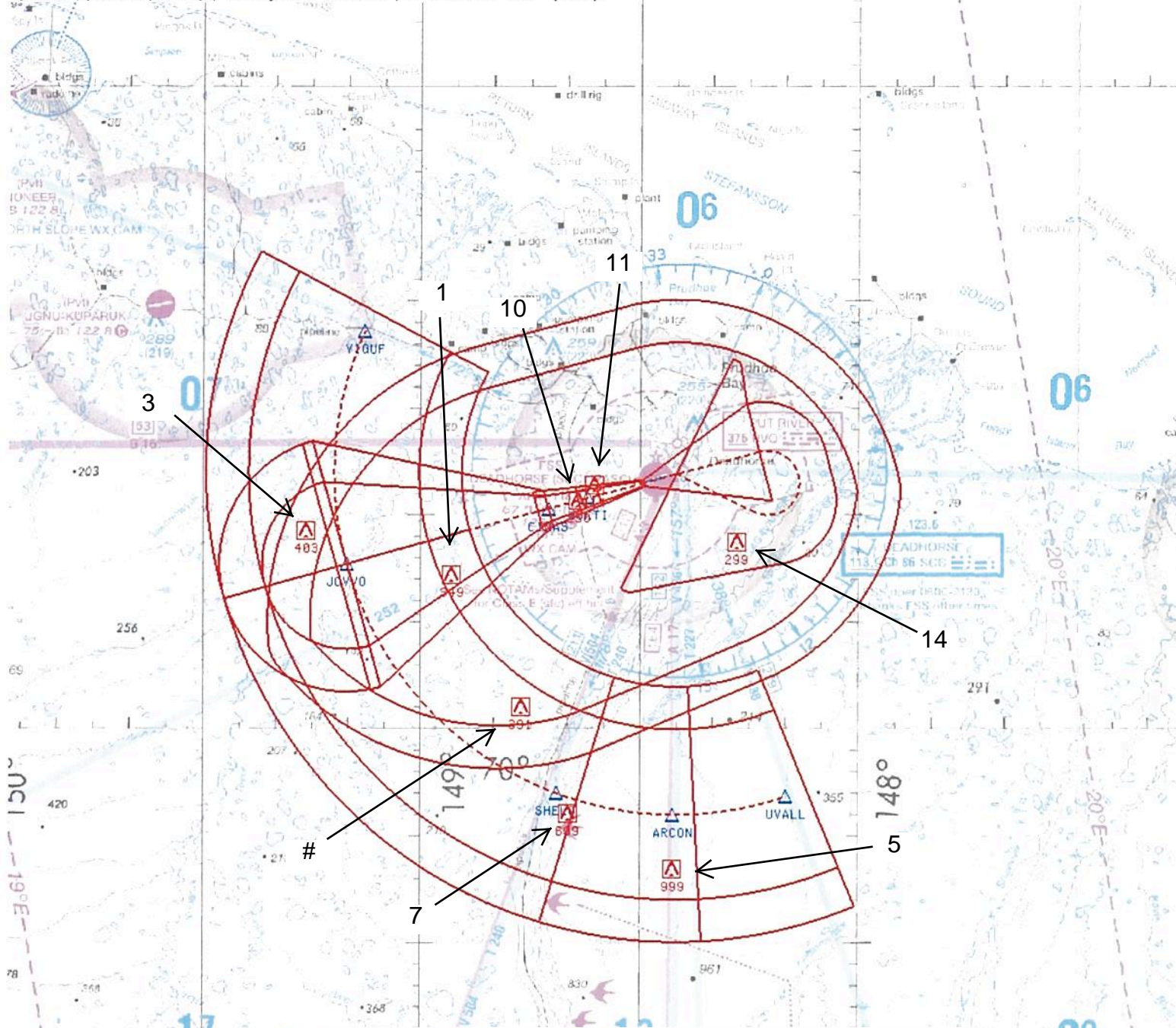


Airport ID:	PASC	FM 9			
Apt Name:	DEADHORSE	No	SEGMENT	OBSTRUCTION	ELEV
City:	DEADHORSE	1	PVQ and SCC FEEDER	AAO	349
State:	AK	12	HIL	AAO	627
Scale:	1:500,000				
Proc ID:	ILS OR LOC RWY 6				

Summertime nesting areas for Peregrine Falcons. The Service encourages pilots to remain at least 1/4 mile from bluffs in this area, April 15 through August 31.

NM 7 14 21 28 35 42 49
 FT 42000 84000 126000 168000 210000 252000 294000

fpokdd | pascil6 (PROD) | 12 May 2017 10:31:30 | 1" = 41666.7 feet (MAP)



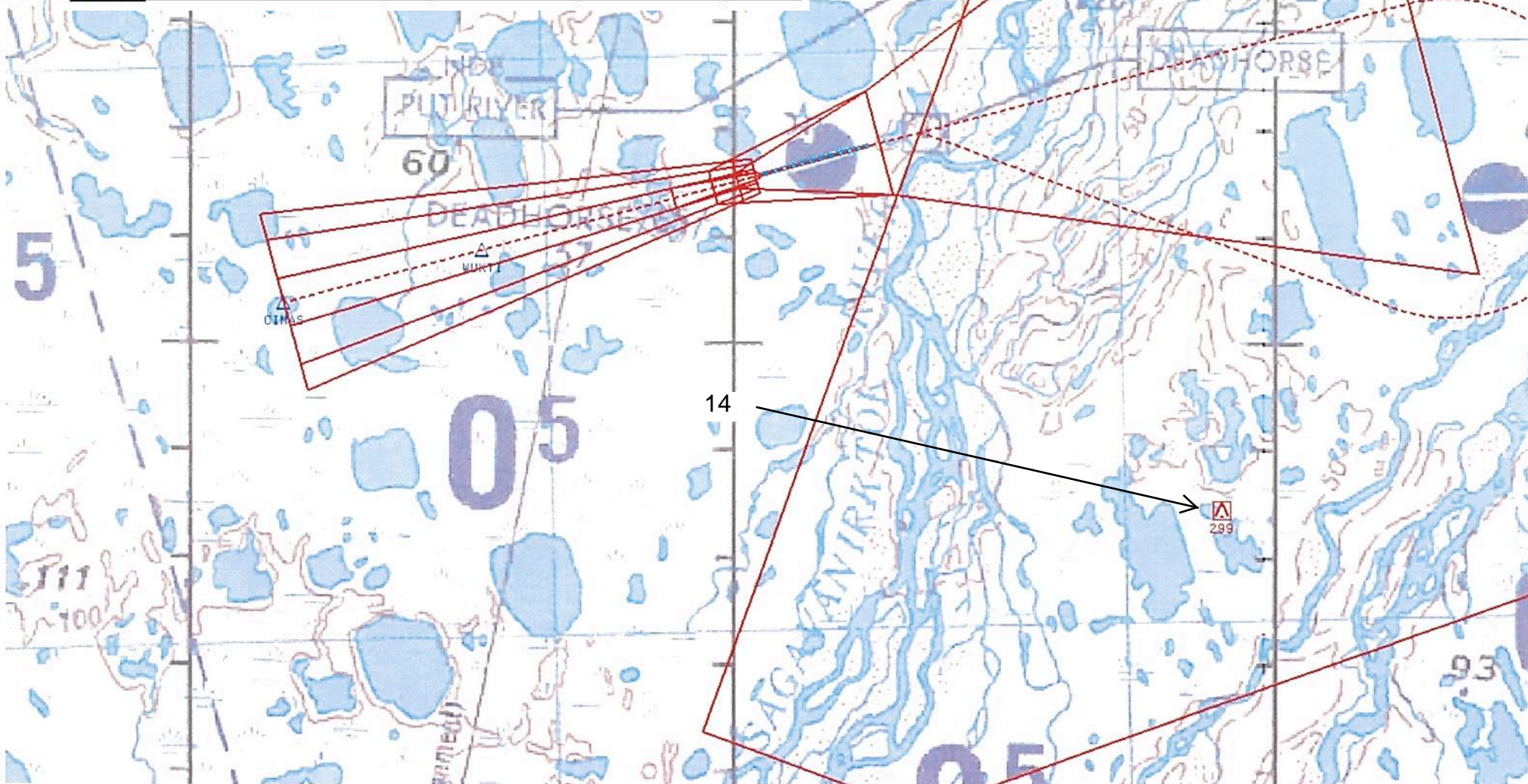
Airport ID:	PASC	FM 9			
Apt Name:	DEADHORSE	No	SEGMENT	OBSTRUCTION	ELEV
City:	DEADHORSE	3	YIGUF ARC	AAO	403
State:	AK	5	ARCON AND UVALL ARC	AAO	999
Scale:	1:500,000	7	SHELO ARC	AAO	699
Proc ID:	ILS OR LOC RWY 6	1	INTERMEDIATE	AAO	349
Amdt #:	2	10	LOC FINAL	AAO	250
		11	LOC FINAL S/D	VEHICLE	114
		14	MA LVL SFC	AAO	299
		#	MA HOLDING	AAO	391

Some Falcons. The U.S. Fish and Wildlife Service requires that all aircraft maintain a minimum altitude of at least 1/4 mile laterally, and 1,000 feet vertically, from August 31.

NM 1 2 3 4 5 6 7 8 9 10 11 12 13 14
FT 8000 16000 24000 32000 40000 48000 56000 64000 72000 80000

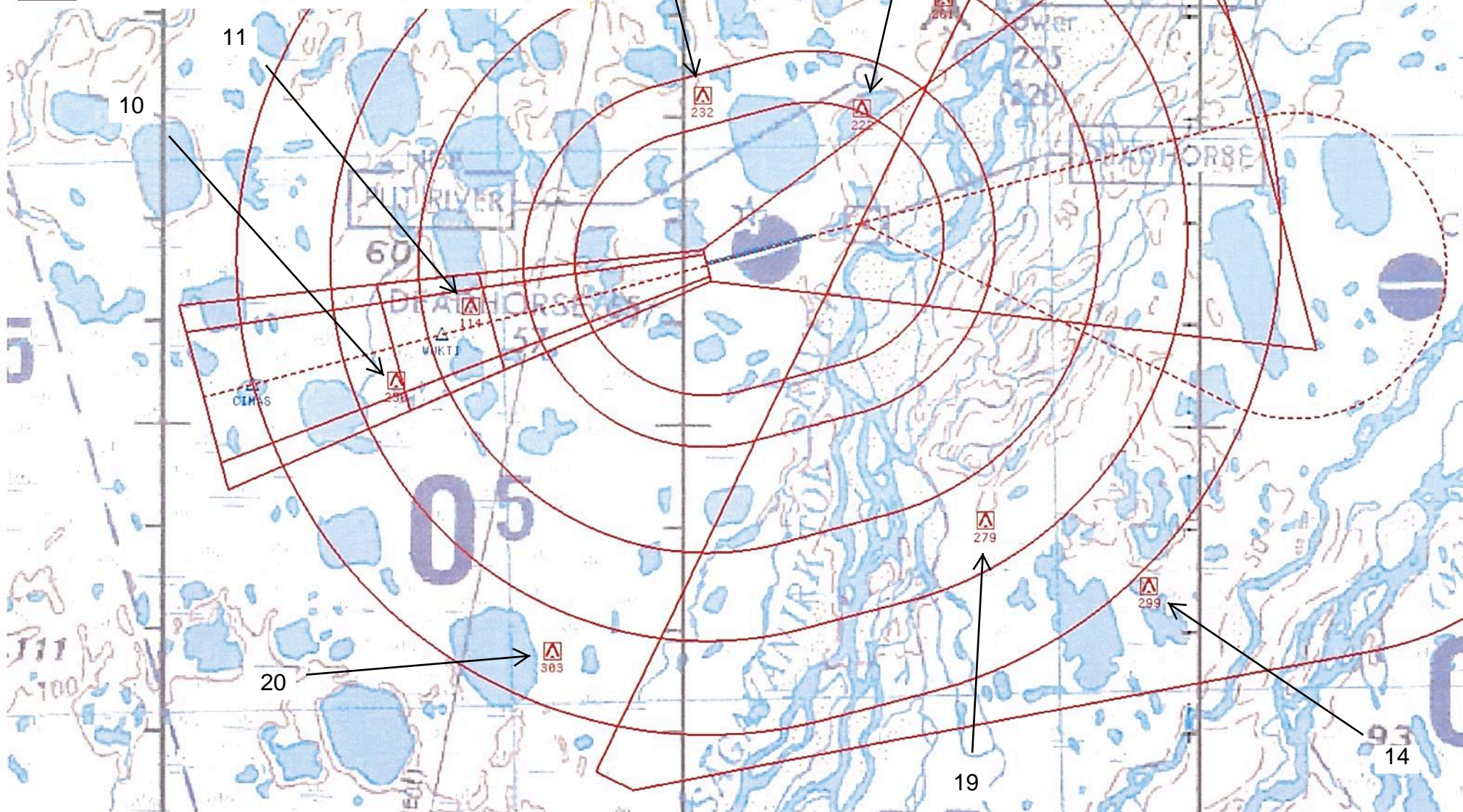
fpokdd | pascil6 (PROD) | 12 May 2017 08:46:03 | 1" = 8333.3 feet (MAP)

Airport ID:	PASC	FM 9			
Apt Name:	DEADHORSE	No	SEGMENT	OBSTRUCTION	ELEV
City:	DEADHORSE		FINAL-ILS	ASC	
State:	AK	14	MA LVL SFC	AAO	299
Scale:	1:100,000				
Proc ID:	ILS OR LOC RWY 6				
Amdt #:	3				

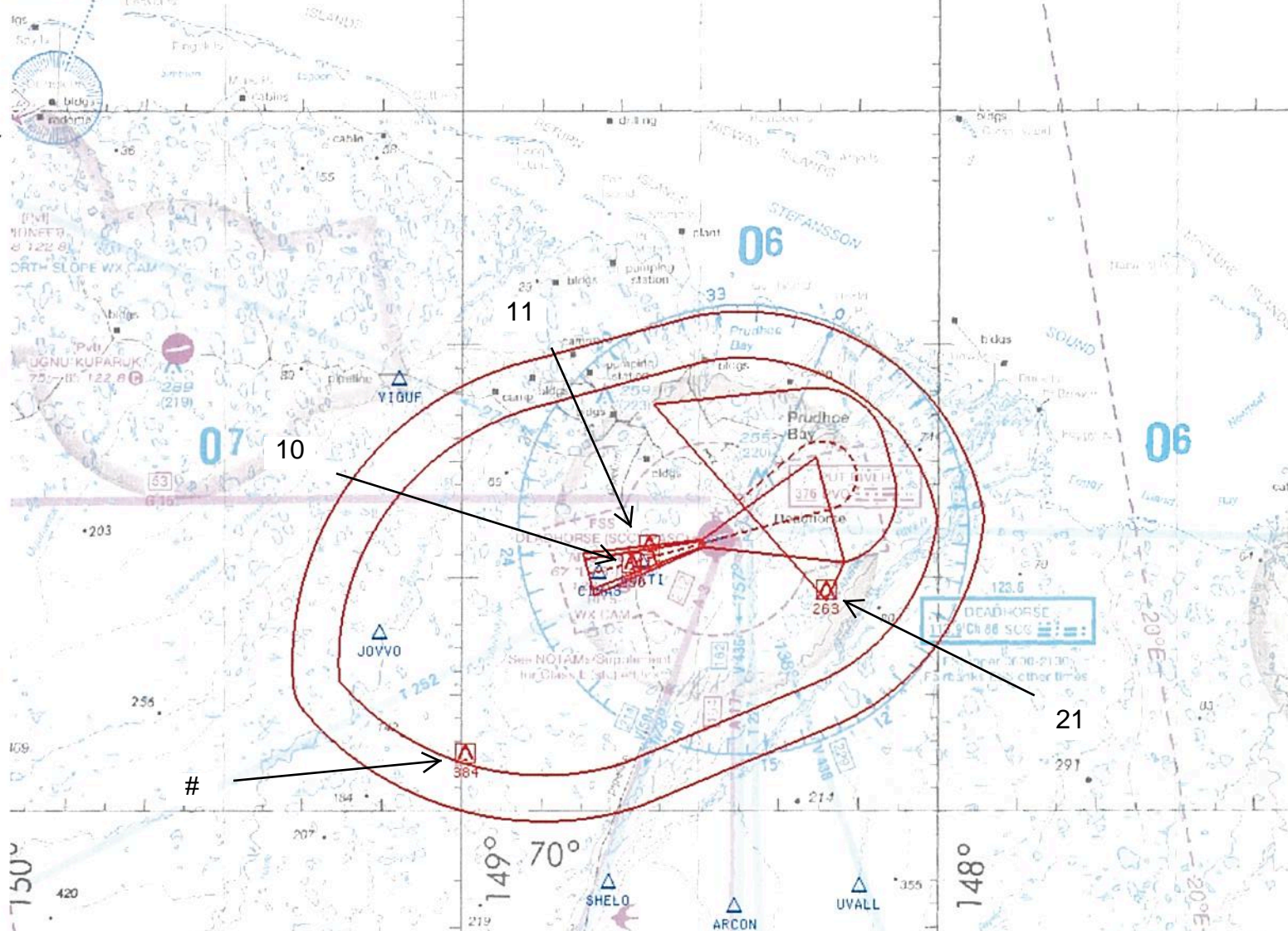


NM 1 2 3 4 5 6 7 8 9 10 11 12 13 14
FT 8000 16000 24000 32000 40000 48000 56000 64000 72000 80000
fpokdd | pascil6 (PROD) | 12 May 2017 08:26:23 | 1" = 8333.3 feet (MAP)

Airport ID:	PASC	FM 9			
Apt Name:	DEADHORSE	No	SEGMENT	OBSTRUCTION	ELEV
City:	DEADHORSE	10	LOC FINAL	AAO	250
State:	AK	11	LOC FINAL S/D	VEHICLE	114
Scale:	1:100,000	16	CIRC CAT A	RIG	222
Proc ID:	ILS OR LOC RWY 6	17	CIRC CAT B	RIG	232
Amdt #:	3	18	CIRC CAT C	ANT	261
		19	CIRC CAT D	AAO	279
		20	CIRC CAT E	AAO	303
		14	MA LVL SFC	AAO	299



RESTRICTED
R-2204
HIGH & LOW

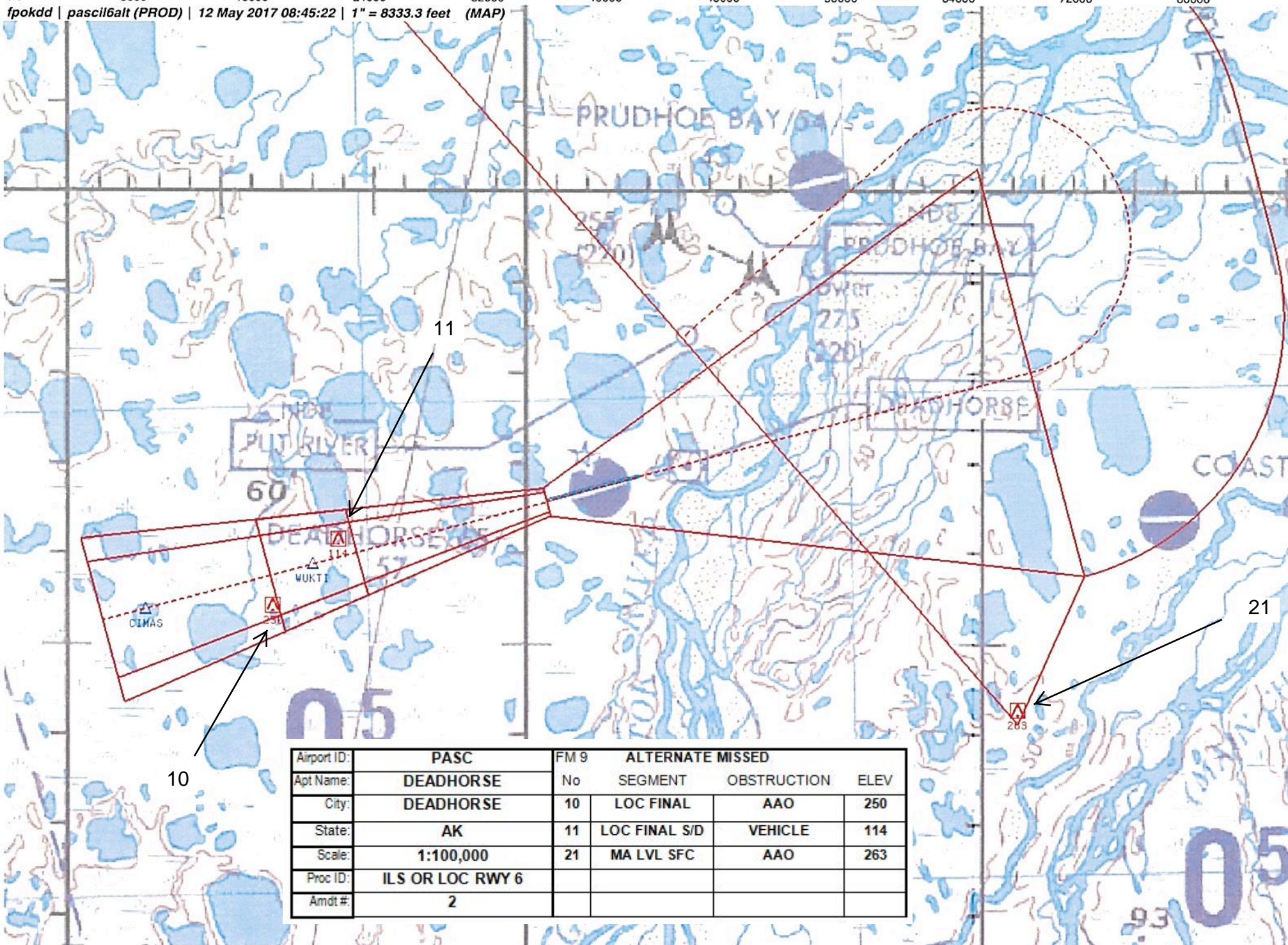


Airport ID:	PASC	FM 9	ALTERNATE MISSED		
Apt Name:	DEADHORSE	No	SEGMENT	OBSTRUCTION	ELEV
City:	DEADHORSE	10	LOC FINAL	AAO	250
State:	AK	11	LOC FINAL S/D	VEHICLE	114
Scale:	1:500,000	21	MA LVL SFC	AAO	263
Proc ID:	ILS OR LOC RWY 6	#	MA HOLDING	AAO	384
Amdt #:	2				

Summertime nesting areas for Peregrine Falcons. The U.S. Fish Service encourages pilots to remain at least 1/4 mile laterally from bluffs in this area, April 15 through August 31.

NM 1 2 3 4 5 6 7 8 9 10 11 12 13 14
FT 8000 16000 24000 32000 40000 48000 56000 64000 72000 80000

fpokdd | pascil6alt (PROD) | 12 May 2017 08:45:22 | 1" = 8333.3 feet (MAP)



TERMINAL AIRSPACE DATA REQUIREMENTS

CITY: DEADHORSE

STATE: AK

AIRPORT NAME: DEADHORSE

ID: PASC

PROCEDURE: ILS OR LOC RWY 6

AMDT: 3

DOCKET # :

(96-AXX-X/Required/Not Required)

ALL DIST TO 1/100 NM; ELEV TO NEAREST FT; COORD TO 1/100 SEC; DEG TO 1/100 DG.

1. Distance from THLD to 1000' point 3.06
(Enter THLD, FAF, ARP, FACILITY, as appropriate)
2. Width of FINAL segment at 1000' point 0.88
(Enter appropriate segment , final, intermediate, etc.)
3. True Course of FINAL segment containing 1000' point 074.99
4. High Terrain in FINAL segment containing 1000' point 99
5. Distance from THLD to 1500' point 4.63
(If 1500' point in PT maneuvering area or holding pattern note in remarks)
6. Width of FINAL segment at 1500' point 1.22
7. True Course of FINAL segment containing 1500' point 074.99
8. High Terrain in FINAL segment containing 1500' point 99
9. Threshold Coordinates (if straight-in) ... 701132.85N / 1483935.65W
10. ARP Coordinates 701143.97N / 1482756.84W
11. Runway Approach End and distance furthest from ARP.....RWY 24
Distance 0.54 NM
12. FAF Coordinates 701020.65N / 1484233.59W
(Click to Select)

REMARKS: