

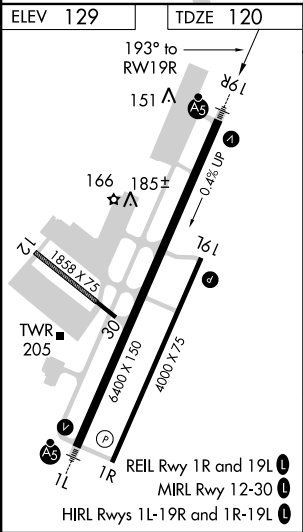
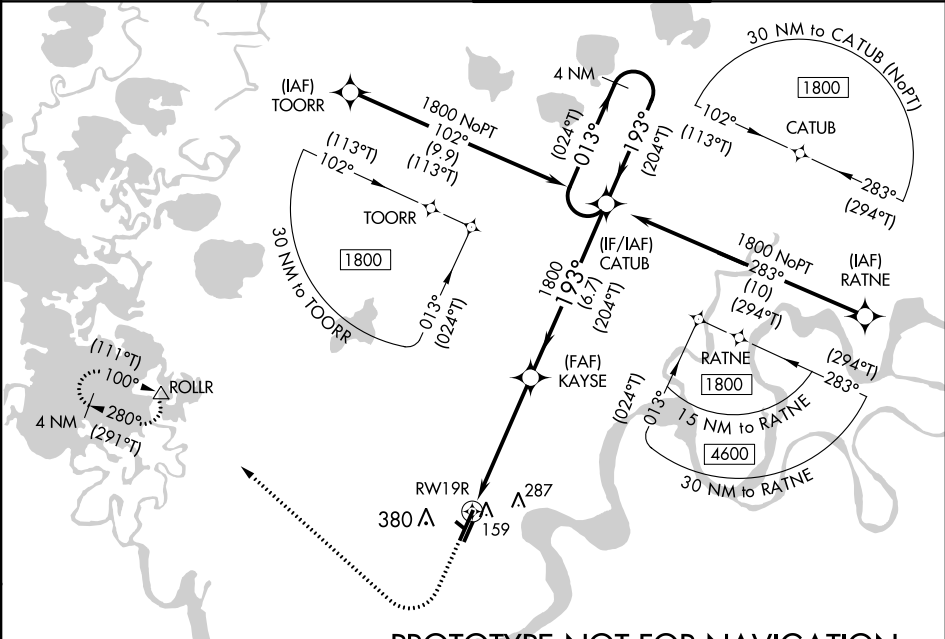
Flight Procedure Tracking Form		Action: FLIGHT CHECK	Task Type: IAP	Date Open: 07/13/2015	Task #: 2014101533470101005	Request #: 20141015334701
Procedure: RNAV (GPS) RWY 19R AMDT 2D			Airport ID: PABE	Airport: BETHEL		Reimbursable #: NO
City: BETHEL	ST: AK	GPS #:	Estimated Chart Date: 04/27/2017		FICO #:	
Fac ID: N/A		Fac. Type:			Specialist: HERMAN ROGERS	
Procedure Review						
	Rec'd	Rel'd	Full Name	Comments		
Lead:	05/20/2016			<div>QUALITY</div> <div>10</div> <div>CHECKED</div>		
QA:						
Liaison:						
Procedure Comments: ENROUTE-NON Remark Type: INFORMATION PENDING DATA USED FOR PABE ARPT, BETHEL (BET) ILS, OSCARVILLE (OSE) NDB MAGVAR UPDATE: PABE ARPT; BETHEL (BET) ILS; OSCARVILLE (OSE) NDB : OLD 14E/2010; NEW 11E/2020 CONTACT: PAT MULQUEEN/JACOB POWERS. AJV-543 405.954.4073/8702						

WAAS CH 70507 W19A	APP CRS 193°	Rwy Idg 6400 TDZE 120 Apt Elev 129
---------------------------------	------------------------	---

RNAV (GPS) RWY 19R
BETHEL (BET)(PABE)

<div><div>⚠</div><div>For uncompensated Baro-VNAV systems, LNAV/VNAV NA below -25°C (-13°F) or above 54°C (130°F). Circling NA west of Rwy 1L-19R. DME/DME RNP-0.3 NA.</div></div>	<div><div>MALSR</div><div></div></div>	<div>MISSED APPROACH: Climb to 1700 then climbing right turn to 2000 direct ROLLR and hold.</div>
--	--	---

ATIS 119.8	ANCHORAGE CENTER 125.2 372.0	BETHEL TOWER ★ 118.7 (CTAF) 0	GND CON 121.7
----------------------	--	---	-------------------------



ELEV 129 TDZE 120			
1700 2000 ROLLR			
* LNAV only.			
RWY 19R 1.3 NM 3.9 NM 6.7 NM			
CATEGORY	A	B	C
LPV DA	320/24	200 (300-½)	
LNAV/VNAV DA	479/40	359 (400-¾)	
LNAV MDA	560/24	440 (500-½)	560/45 440 (500-¾)
CIRCLING	560-1 431 (500-1)	600-1 471 (500-1)	600-1½ 471 (500-½) 680-2 551 (600-2)

161°45'0"W

ARPT: BETHEL (PABE)
CITY: BETHEL, AK
PROC: RNAV (GPS) RWY 19R, AMDT 2D

CIRC CAT A
#16 ANTENNA 162

CIRC CAT B/C
#17 ANTENNA 299

CIRC CAT D
#18 350 AAO

PABE 40NM 4-27-17 HROGERS
Transverse Mercator
Scale 1:100000

60°45'0"N

