

<b>Flight Procedure Tracking Form</b>		<b>Action:</b> FLIGHT CHECK	<b>Task Type:</b> IAP	<b>Date Open:</b> 07/13/2015	<b>Task #:</b> 2014101533470101004	<b>Request #:</b> 20141015334701
<b>Procedure:</b> RNAV (GPS)-A AMDT 1B			<b>Airport ID:</b> PABE	<b>Airport:</b> BETHEL		<b>Reimbursable #:</b> NO
<b>City:</b> BETHEL	<b>ST:</b> AK	<b>GPS #:</b>	<b>Estimated Chart Date:</b> 04/27/2017		<b>FICO #:</b>	
<b>Fac ID:</b> N/A		<b>Fac. Type:</b>			<b>Specialist:</b> HERMAN ROGERS	
<b>Procedure Review</b>						
	<b>Rec'd</b>	<b>Rel'd</b>	<b>Full Name</b>	<b>Comments</b>		
<b>Lead:</b>	05/20/2016			<div>QUALITY</div> <div>10</div> <div>CHECKED</div>		
<b>QA:</b>						
<b>Liaison:</b>						
<b>Procedure Comments:</b> ENROUTE-NON <b>Remark Type:</b> INFORMATION  PENDING DATA USED FOR PABE ARPT, BETHEL (BET) ILS, OSCARVILLE (OSE) NDB  MAGVAR UPDATE: PABE ARPT; BETHEL (BET) ILS; OSCARVILLE (OSE) NDB : OLD 14E/2010; NEW 11E/2020  CONTACT: PAT MULQUEEN/JACOB POWERS. AJV-543 405.954.4073/8702						

FIG

RNAV (GPS)-A  
BETHEL(BET)(PABE)

PROCEDURE NA FOR ARRIVALS AT ROLLR ON V319 WESTBOUND.

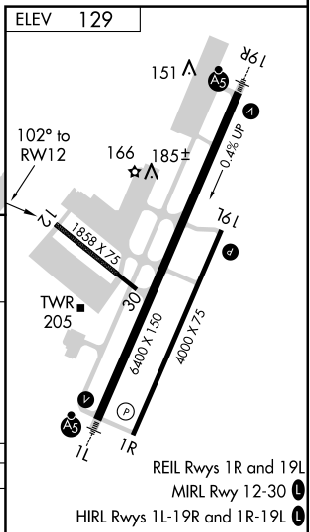
PROTOTYPE: NOT FOR NAVIGATION

4 NM (29) 100° 180° 102° (6.4) (IF/IAF) ROLLR (FAF) AYWAF RW12 380 159 287

MSA RW12 25 NM 2200

ELEV 129

102° to RW12 166 185± 0.4% UP



BETHEL (BET)(PABE)  
RNAV (GPS)-A



161°45'0"W

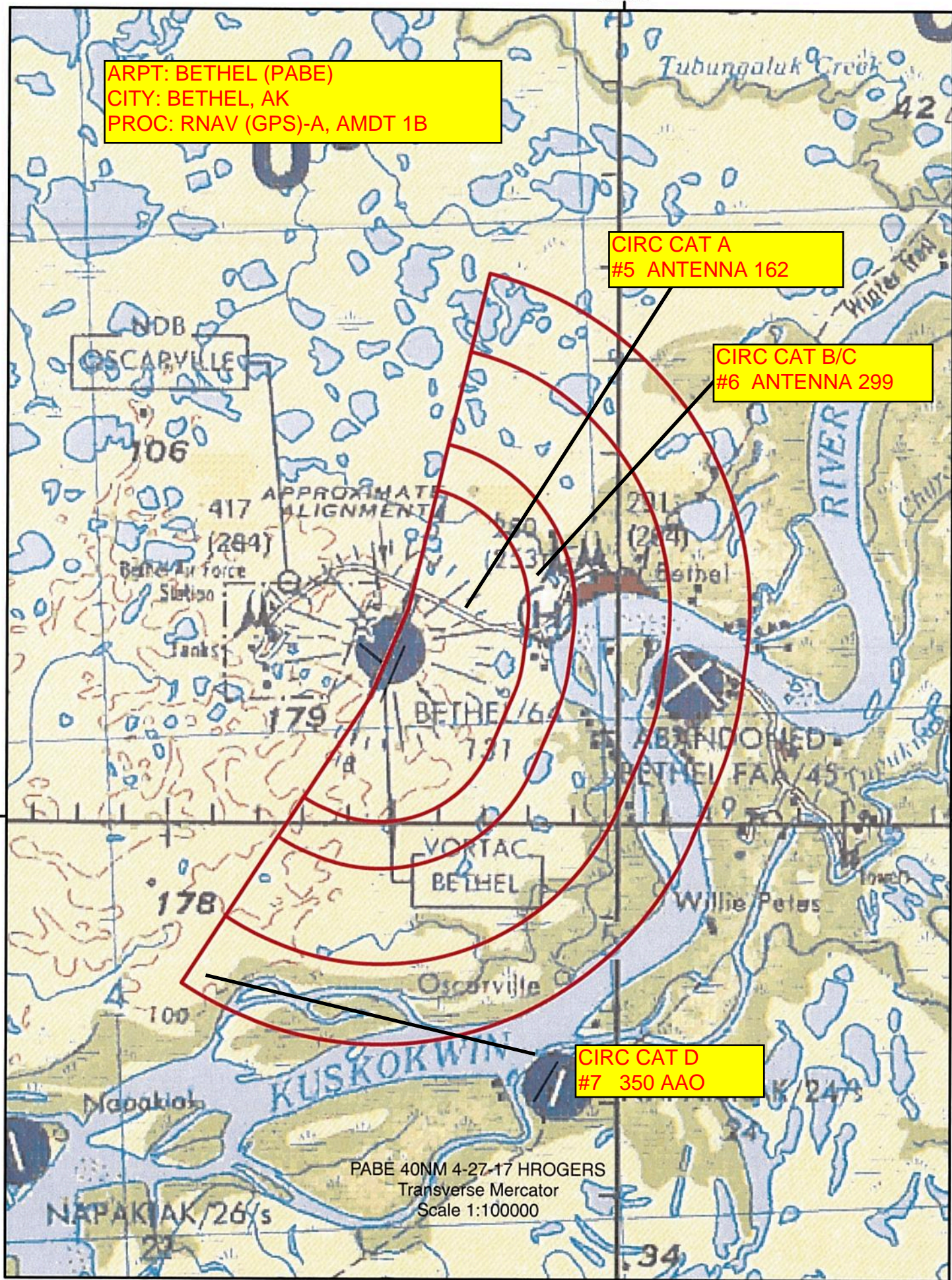
ARPT: BETHEL (PABE)  
CITY: BETHEL, AK  
PROC: RNAV (GPS)-A, AMDT 1B

CIRC CAT A  
#5 ANTENNA 162

CIRC CAT B/C  
#6 ANTENNA 299

CIRC CAT D  
#7 350 AAO

60°45'0"N



PABE 40NM 4-27-17 HROGERS  
Transverse Mercator  
Scale 1:100000