



Flight Procedure Tracking Form		Action: AMENDMENT	Task Type: IAP	Date Open: 07/13/2015	Task #: 2014101533470101003	Request #: 20141015334701
Procedure: VOR RWY 1L AMDT 2C			Airport ID: PABE	Airport: BETHEL		Reimbursable #: NO
City: BETHEL	ST: AK	GPS #:	Estimated Chart Date: 04/27/2017		FICO #:	
Fac ID: BET		Fac. Type: VORTAC			Specialist: HERMAN ROGERS	
Procedure Review						
	Rec'd	Rel'd	Full Name	Comments		
Lead:	05/20/2016	11/28/2016	JACOB POWERS			
QA:	11/28/2016					
Liaison:						
Procedure Comments:			Remark Type: INFORMATION			
PENDING DATA USED FOR PABE ARPT, BETHEL (BET) ILS, OSCARVILLE (OSE) NDB						
MAGVAR UPDATE: PABE ARPT; BETHEL (BET) ILS; OSCARVILLE (OSE) NDB : OLD 14E/2010; NEW 11E/2020						
CONTACT: PAT MULQUEEN/JACOB POWERS. AJV-543 405.954.4073/8702						

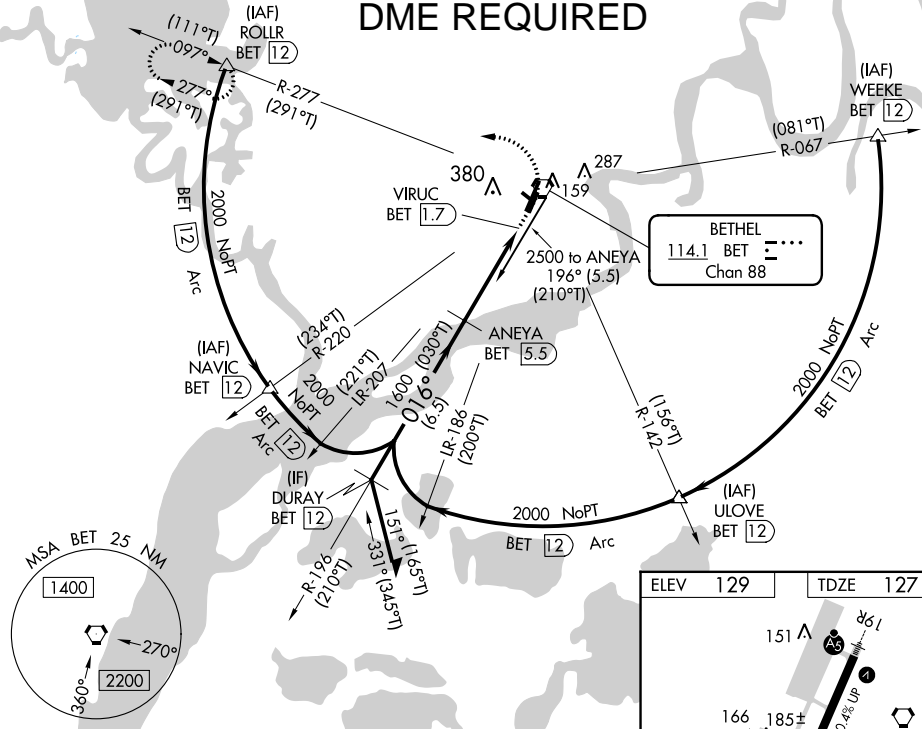
FIG

VOR RWY 1L
BETHEL (BET)(PABE)

MISSED APPROACH: Climb to 800 then climbing left turn to 2000 on BET VORTAC R-277 to ROLLR/12 DME and hold.

GND CON
121.7

PROTOTYPE-NOT FOR NAVIGATION



Remain
within 10 NM

ANEYA
BET 5.5

1700

80

2000

ROLLR

1600

-016°-

2.98°
TCH 47

VIRUC

BET 1.2

CATEGORY

4

10

T

--	--

611

2

1

--	--

BETHEL (BET)(PABE)
VOR RWY 1L

60°47'N-161°50'W

161°45'0"W

ARPT: BETHEL (PABE)
CITY: BETHEL, AK
PROC: VOR/DME RWY 1L, AMDT 2C

CIRC CAT A
#17 ANTENNA 162

CIRC CAT B/C
#18 ANTENNA 299

CIRC CAT D
#19 350 AAO

PABE 40NM 4-27-17 HROGERS
Transverse Mercator
Scale 1:100000

60°45'0"N

