

<b>Flight Procedure Tracking Form</b>		<b>Action:</b> AMENDMENT	<b>Task Type:</b> IAP	<b>Date Open:</b> 10/15/2014	<b>Task #:</b> 2014101532719401003	<b>Request #:</b> 20141015327194
<b>Procedure:</b> LOC BC RWY 25 AMDT 1			<b>Airport ID:</b> PABR	<b>Airport:</b> WILEY POST-WILL ROGERS MEMORIAL		<b>Reimbursable #:</b> NO
<b>City:</b> BARROW	<b>ST:</b> AK	<b>GPS #:</b>	<b>Estimated Chart Date:</b> 03/02/2017		<b>FICO #:</b> 1175092	
<b>Fac ID:</b> BRW		<b>Fac. Type:</b> ILS			<b>Specialist:</b> IVAN BLANCO	
<b>Procedure Review</b>						
	<b>Rec'd</b>	<b>Rel'd</b>	<b>Full Name</b>	<b>Comments</b>		
<b>Lead:</b>	11/24/2015	10/27/2016	DAVID DANNER	QUALITY		
<b>QA:</b>	10/27/2016	10/27/2016	DAVID DANNER	4	1/11CTabaka	
<b>Liaison:</b>	10/27/2016	10/28/2016	MARY MCDONALD	CHECKED		
<b>Procedure Comments:</b>			<b>Remark Type:</b> INFORMATION			
<p>AMENDMENT TO ADD MISSED APPROACH HOLDING PER FPT REQUEST.  CONTACT JACON POWERS: 405.954.8702  PAT MULQUEEN TEAM MANAGER: 405.954.4073</p> <p>PROJ CONVERTED FROM ABBREVIATED AMDT 0 A TO MAJOR AMDT 1.</p>						

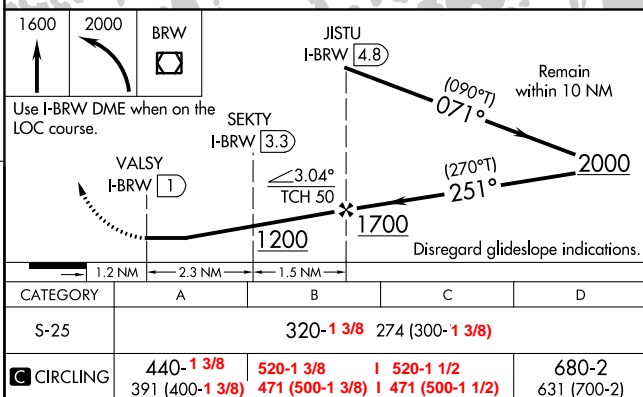
QUALITY  
28  
CHECKED

FIG

WILEY POST-WILL ROGERS MEMORIAL (BRW)(PABR)

**MISSED APPROACH:** Climb to 1600 then climbing left turn to 2000 direct BRW VOR/DME and hold, continue climb-in-hold 2000.

## DME REQUIRED



LOC BC RWY 25

LOC/DME I-BRW <b>110.5</b> Chan <b>42</b>	APP CRS <b>251°</b>	Rwy Idg <b>5900</b> TDZE <b>48</b> Apt Elev <b>52</b>
---	------------------------	---

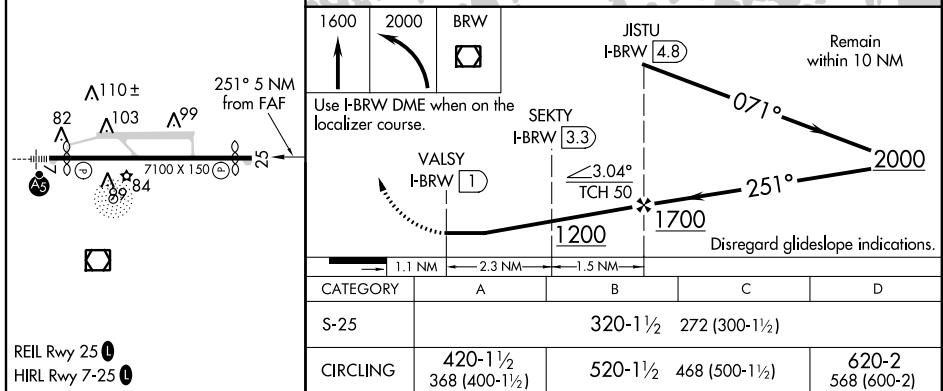
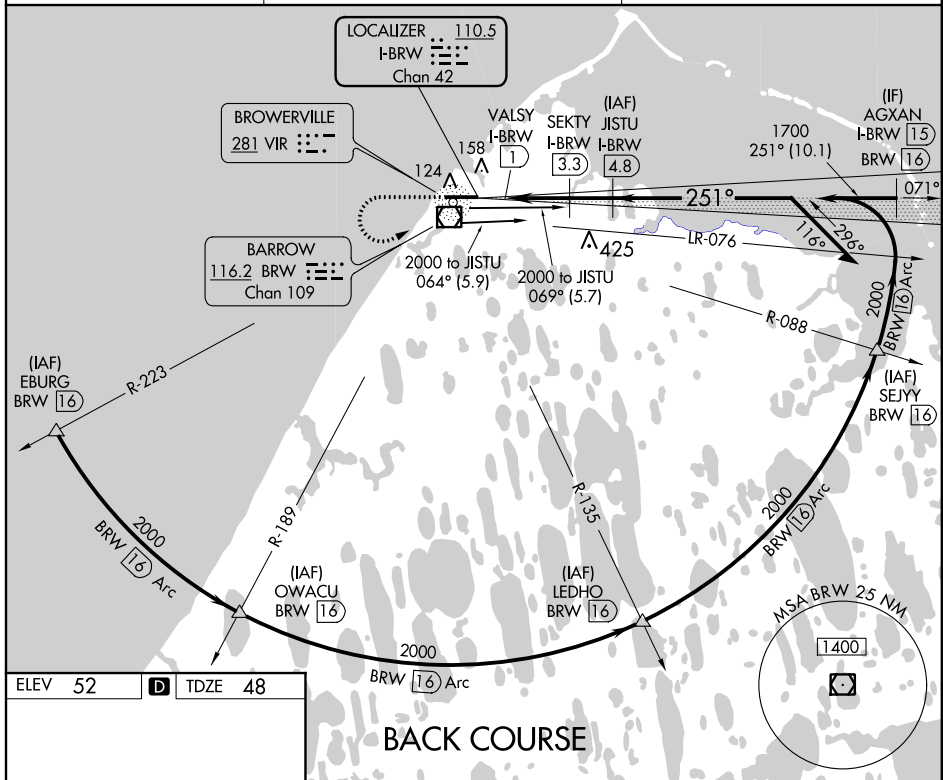
## LOC/DME BC RWY 25

WILEY POST-WILL ROGERS MEMORIAL (BRW)(PABR)

**T** When local altimeter setting not received, use Atkasuk altimeter setting and increase all MDA 140 feet and circling Cat C and D visibility ¼ mile.  
**A** Circling NA for Cat A north of Rwy 7-25.

**MISSED APPROACH:** Climb to 1600 then climbing left turn to 2000 direct BRW VOR/DME.

AFIS <b>132.15</b>	ANCHORAGE CENTER <b>135.3 239.25</b>	BARROW RADIO <b>123.6 (CTAF) 0</b>
-----------------------	---	---------------------------------------



BARROW, ALASKA  
Orig 29JUL10

WILEY POST-WILL ROGERS MEMORIAL (BRW)(PABR)  
71°17'N-156°46'W LOC/DME BC PWV 25

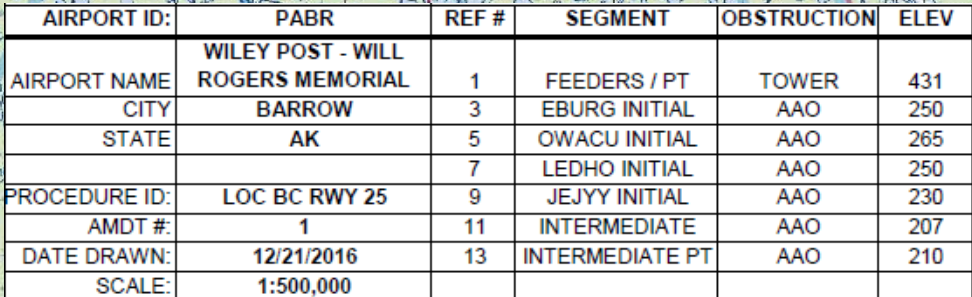
LOC/DME BC RWY 25

AK, 21 JUL 2016 to 15 SEP 2016

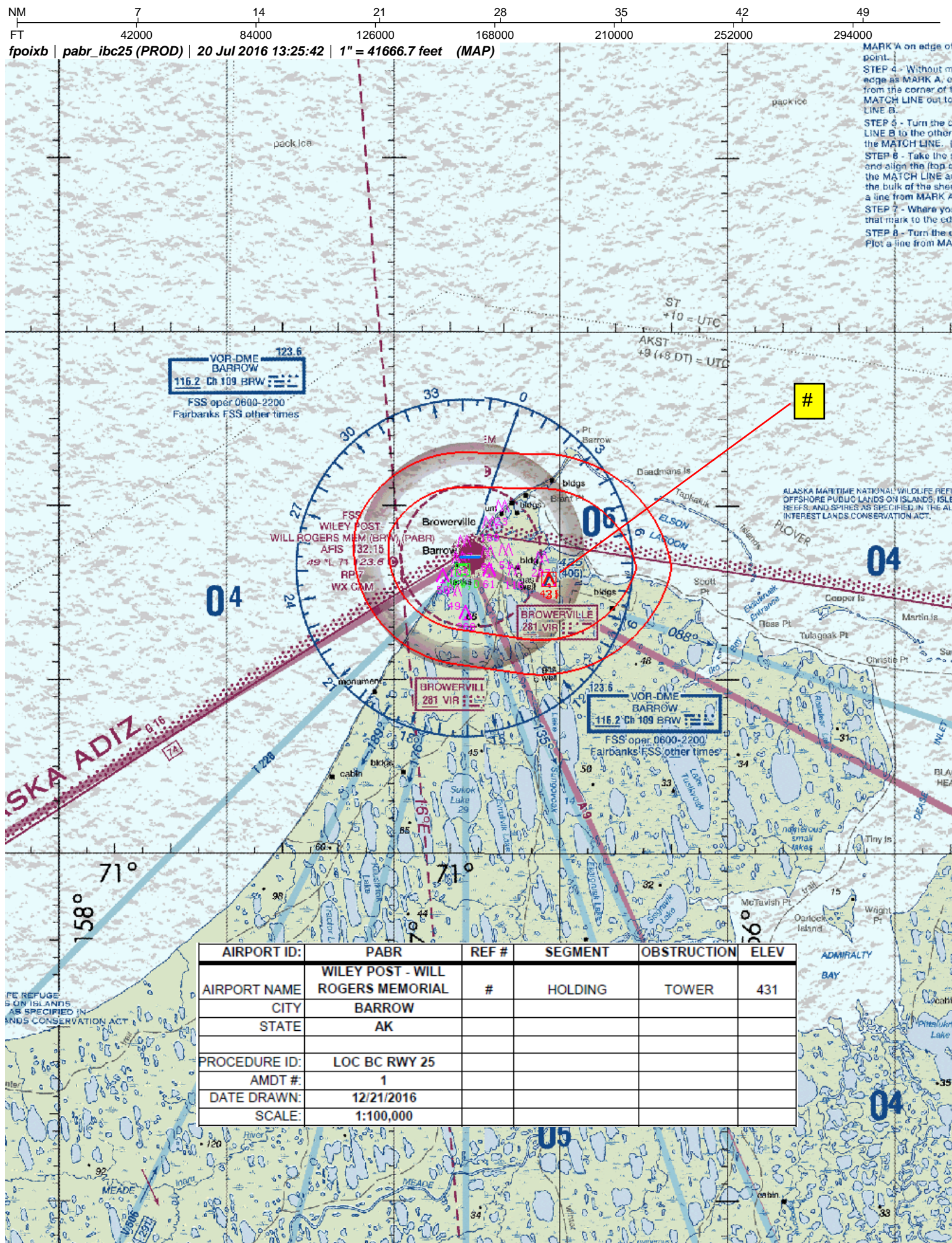
AK. 21 JUL 2016 to 15 SEP 2016



**STEP 5** - Turn the  
LINE 8 to the other  
the MATCH LINE  
**STEP 6** - Take the  
and align the (to  
the MATCH LINE  
the bulk of the s  
a line from MAR  
**STEP 7** - Where  
that mark to the  
**STEP 8** - Turn the  
Plot a line from









**fpoixb | pabr ibcih (PROD) | 20 Jul 2016 13:05:40 | 1" = 41666.7 feet (MAP)**

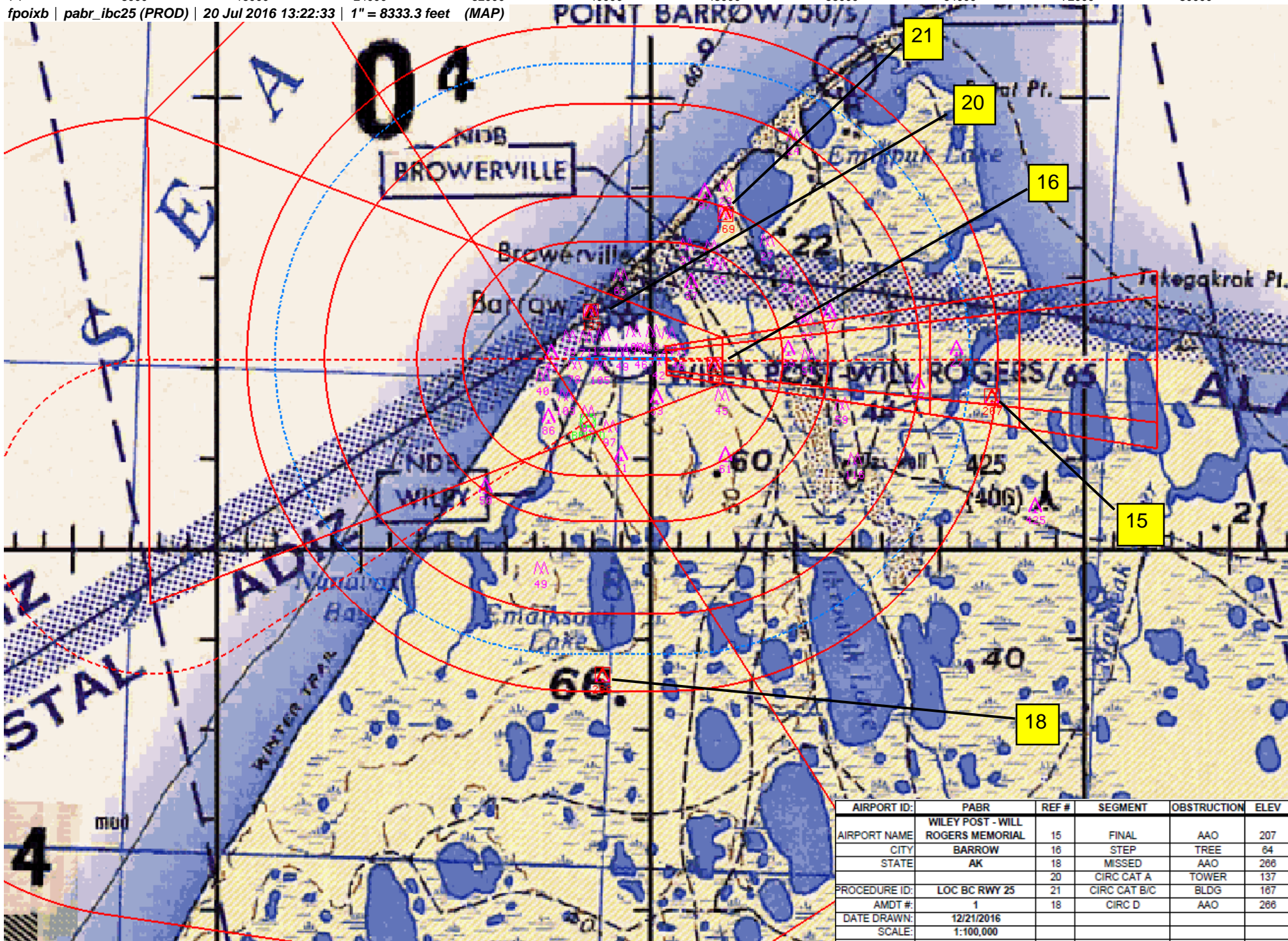
**STEP 8 - Turn the dial**  
Plot a line from MARK



AIRPORT ID:	PABR	REF #	SEGMENT	OBSTRUCTION	ELEV
AIRPORT NAME	WILEY POST - WILL ROGERS MEMORIAL	1	FEEDERS / PT	TOWER	431
CITY	BARROW	3	EBURG INITIAL	AAO	250
STATE	AK	5	OWACU INITIAL	AAO	265
		7	LEDHO INITIAL	AAO	250
PROCEDURE ID:	LOC BC RWY 25	9	JEJYY INITIAL	AAO	230
AMDT #:	1	11	INTERMEDIATE	AAO	207
DATE DRAWN:	12/21/2016	13	INTERMEDIATE PT	AAO	210
SCALE:	1:500,000				



fpoixb | pabr\_ibc25 (PROD) | 20 Jul 2016 13:22:33 | 1" = 8333.3 feet (MAP)



AIRPORT ID:	PABR	REF #	SEGMENT	OBSTRUCTION	ELEV
AIRPORT NAME	WILEY POST - WILL ROGERS MEMORIAL	15	FINAL	AAO	207
CITY	BARROW	16	STEP	TREE	84
STATE	AK	18	MISSED	AAO	286
		20	CIRC CAT A	TOWER	137
PROCEDURE ID:	LOC BC RWY 25	21	CIRC CAT B/C	BLDG	167
AMDT #	1	18	CIRC D	AAO	286
DATE DRAWN:	12/21/2016				
SCALE:	1:100,000				