

Flight Procedure Tracking Form		Action: AMENDMENT	Task Type: IAP	Date Open: 10/15/2014	Task #: 2014101532719401002	Request #: 20141015327194
Procedure: ILS OR LOC RWY 7 AMDT 1			Airport ID: PABR	Airport: WILEY POST-WILL ROGERS MEMORIAL		Reimbursable #: NO
City: BARROW	ST: AK	GPS #:	Estimated Chart Date: 03/02/2017		FICO #: 1175055	
Fac ID: BRW		Fac. Type: ILS			Specialist: IVAN BLANCO	
Procedure Review						
	Rec'd	Rel'd	Full Name	Comments		
Lead:	11/24/2015	10/27/2016	DAVID DANNER	QUALITY		
QA:	10/27/2016	10/27/2016	DAVID DANNER	4	1/11CTabaka	
Liaison:	10/27/2016	10/28/2016	MARY MCDONALD	CHECKED		
Procedure Comments: ENROUTE-NON						
Remark Type: INFORMATION						
<p>AMENDMENT TO ADD MISSED APPROACH HOLDING PER FPT REQUEST. CONTACT JACOB POWERS: 405.954.8702 PAT MULQUEEN TEAM MANAGER: 405.954.4073</p> <p>PROJ CONVERTED FROM ABBREVIATED AMDT 0 B TO AMDT 1.</p>						

QUALITY
28
CHECKED

ILS or LOC RWY 7
WILEY POST-WILL ROGERS MEMORIAL (BRW)(PABR)

MALSR

MISSED APPROACH:
Climb to 1000 then
climbing right turn
to 2000 direct
BRW VOR/DME and
hold, continue climb-
in-hold to 2000.

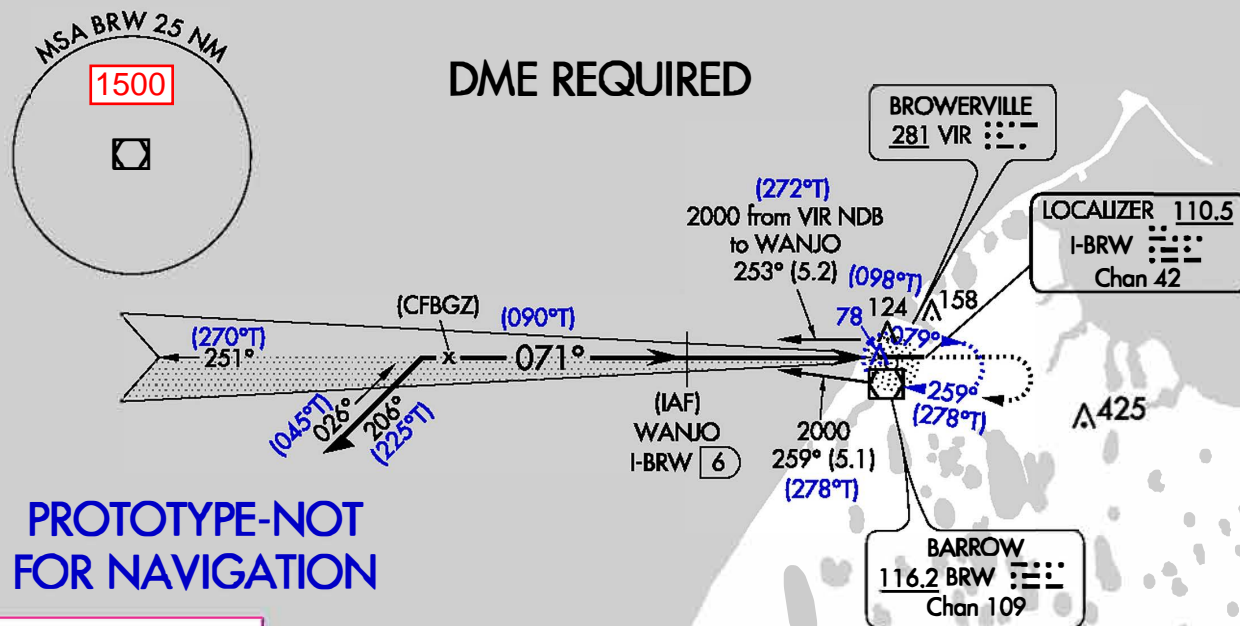
DME REQUIRED.

RVR 1800 authorized with use of HUD or AP to DA.

AFIS
132.15

ANCHORAGE CENTER
135.3 239.25

BARROW RADIO
123.6 (CTAF) **L**



MISSED APCH FIX



VGSI and ILS glidepath not coincident (VGSI Angle 3.00/TCH 51).

Remain within 10 NM

$(270^\circ T)$
 251°

1700

071°
 $(090^\circ T)$

GS 3.00°
TCH 57

1700

4.2 NM


0.8 NM

I-BRW 1.9

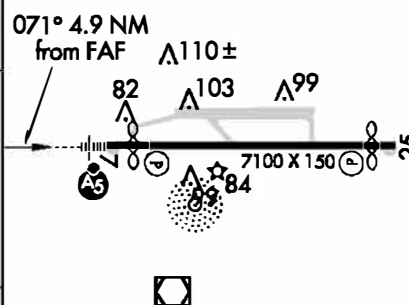
I-BRW 1.1

* I-BRW

* LOC only

CATEGORY	A	B	C	D	
S-ILS 7 #	249/26 200 (200- 5)				
S-LOC 7	340/40 291 (300- 3)				
 CIRCLING	440-1 391 (400-1)	520-1 471 (500-1)	520-1½ 471 (500-1½)	680-2 631 (700-2)	

ELEV	49	D	TDZE	49
------	----	---	------	----



REIL Rwy 25 **L**
HIRL Rwy 7-25 **L**

BARROW, ALASKA
AMDT 1

WILEY POST-WILL ROGERS MEMORIAL (BRW)(PABR)
71°17'N-156°46'W

ILS or LOC RWY 7

CURRENT FOR INFO ONLY

FIG ON REQUEST

BARROW, ALASKA

AL-5463 (FAA)


16203

LOC/DME I-BRW	APP CRS	Rwy Idg	5900
110.5	071°	TDZE	52
Chan 42		Apt Elev	52

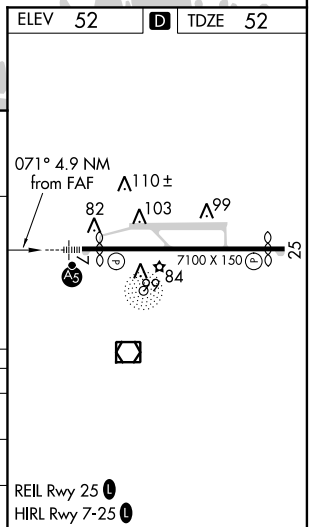
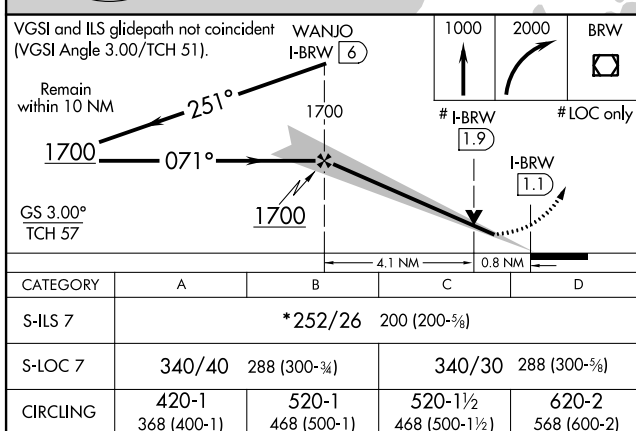
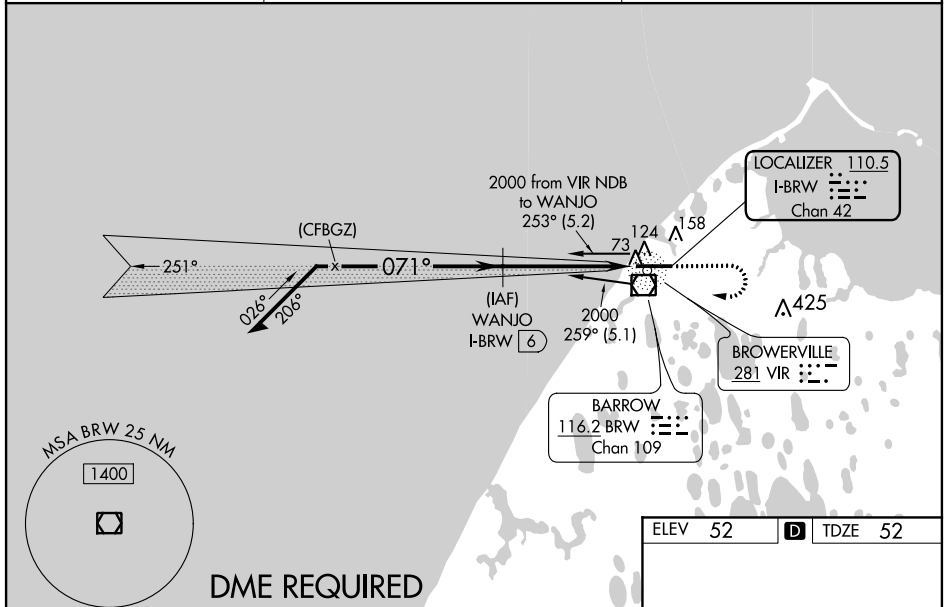
ILS or LOC/DME RWY 7

WILEY POST-WILL ROGERS MEMORIAL (BRW)(PABR)

⚠ For inoperative MALSR, increase S-ILS 7 all Cats visibility to RVR 4000 and S-LOC 7 Cats A and B visibility to RVR 5500 and Cats C and D visibility to RVR 4500. When local altimeter setting not received, use Atkasuk altimeter setting: increase DA to 376 feet and all visibilities $\frac{1}{8}$ mile; increase all MDA 140 feet and S-LOC 7 Cats C and D visibility $\frac{3}{8}$ mile, circling Cats C and D visibility $\frac{1}{4}$ mile. For inoperative MALSR when using Atkasuk altimeter setting, increase S-ILS 7 all Cats visibility to RVR 5000, S-LOC 7 Cats A and B visibility to RVR 5500 and Cats C and D visibility to RVR 6000. VDP NA when using Atkasuk altimeter setting. Circling NA for Cat A north of Rwy 7-25. *RVR 1800 authorized with use of HUD or AP to DA. RVR 1800 NA when using Atkasuk altimeter setting. Autopilot coupled approach NA below 290.

MALSR

MISSED APPROACH:
 Climb to 1000 then climbing right turn to 2000 direct BRW VOR/DME.

AFIS 132.15	ANCHORAGE CENTER 135.3 239.25	BARROW RADIO 123.6 (CTAF) 0
-----------------------	---	---------------------------------------



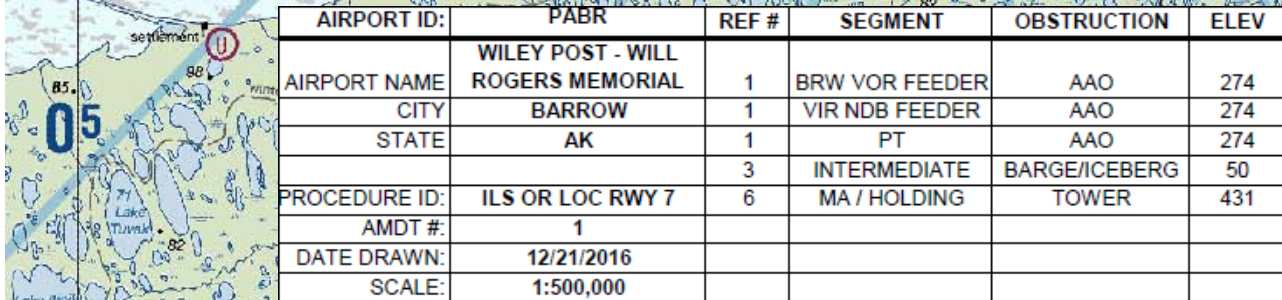
BARROW, ALASKA
 Orig-A 09FEB12

WILEY POST-WILL ROGERS MEMORIAL (BRW)(PABR)
 71°17'N-156°46'W
 ILS or LOC/DME RWY 7

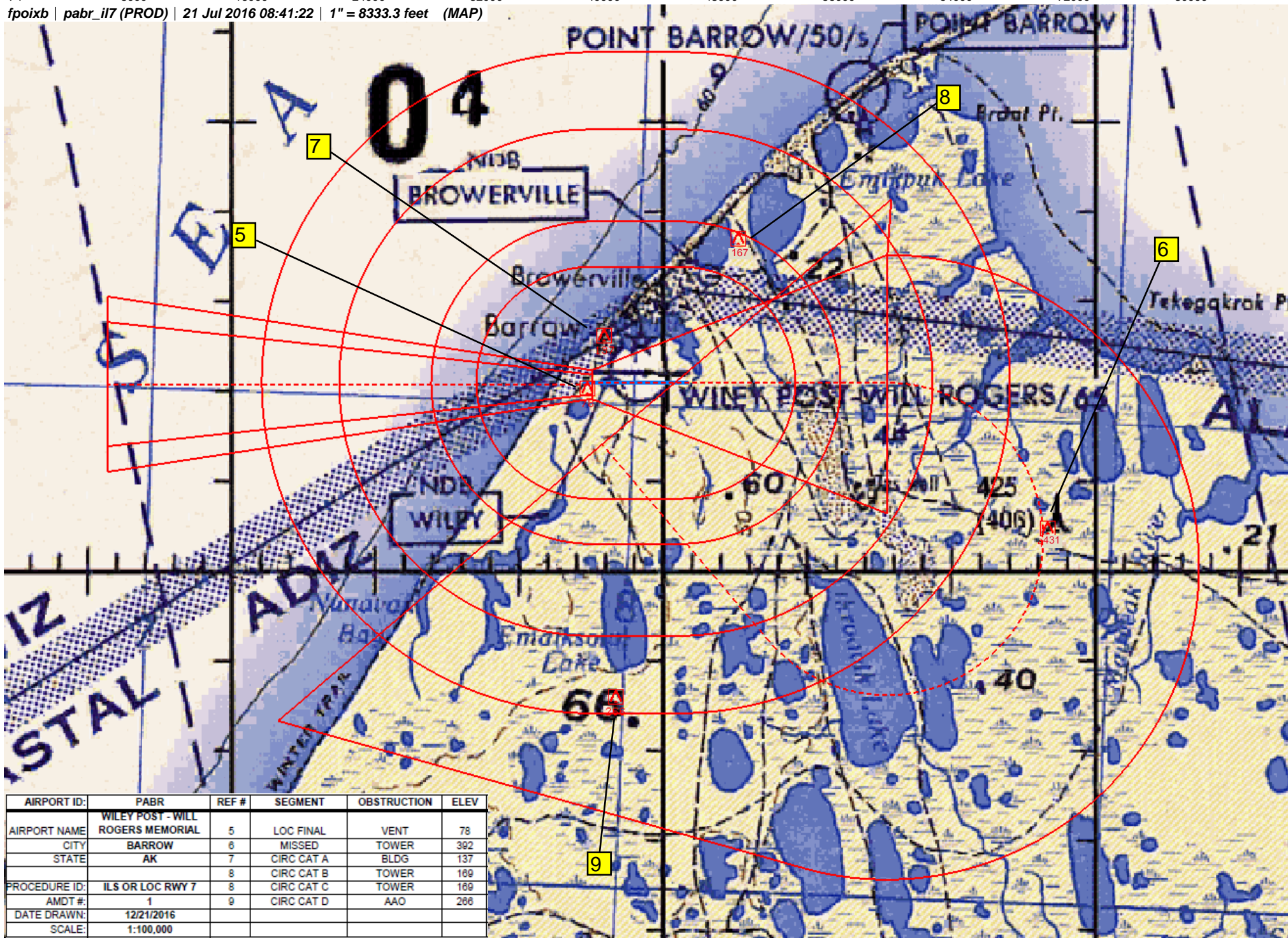
AK, 21 JUL 2016 to 15 SEP 2016

AK, 21 JUL 2016 to 15 SEP 2016

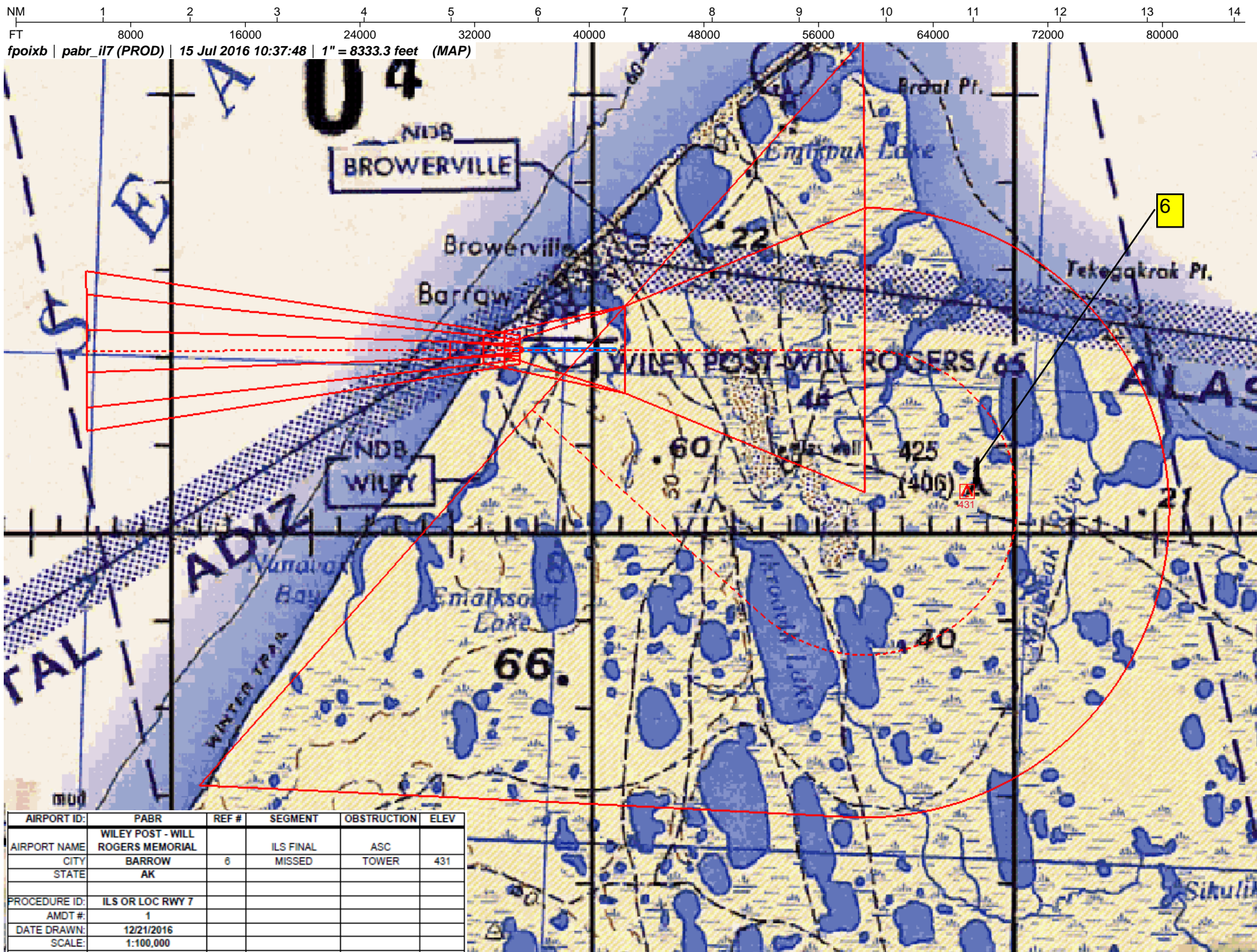
fpoixb | pabr_il7 (PROD) | 21 Dec 2016 10:47:17 | 1" = 41666.7 feet (MAP)



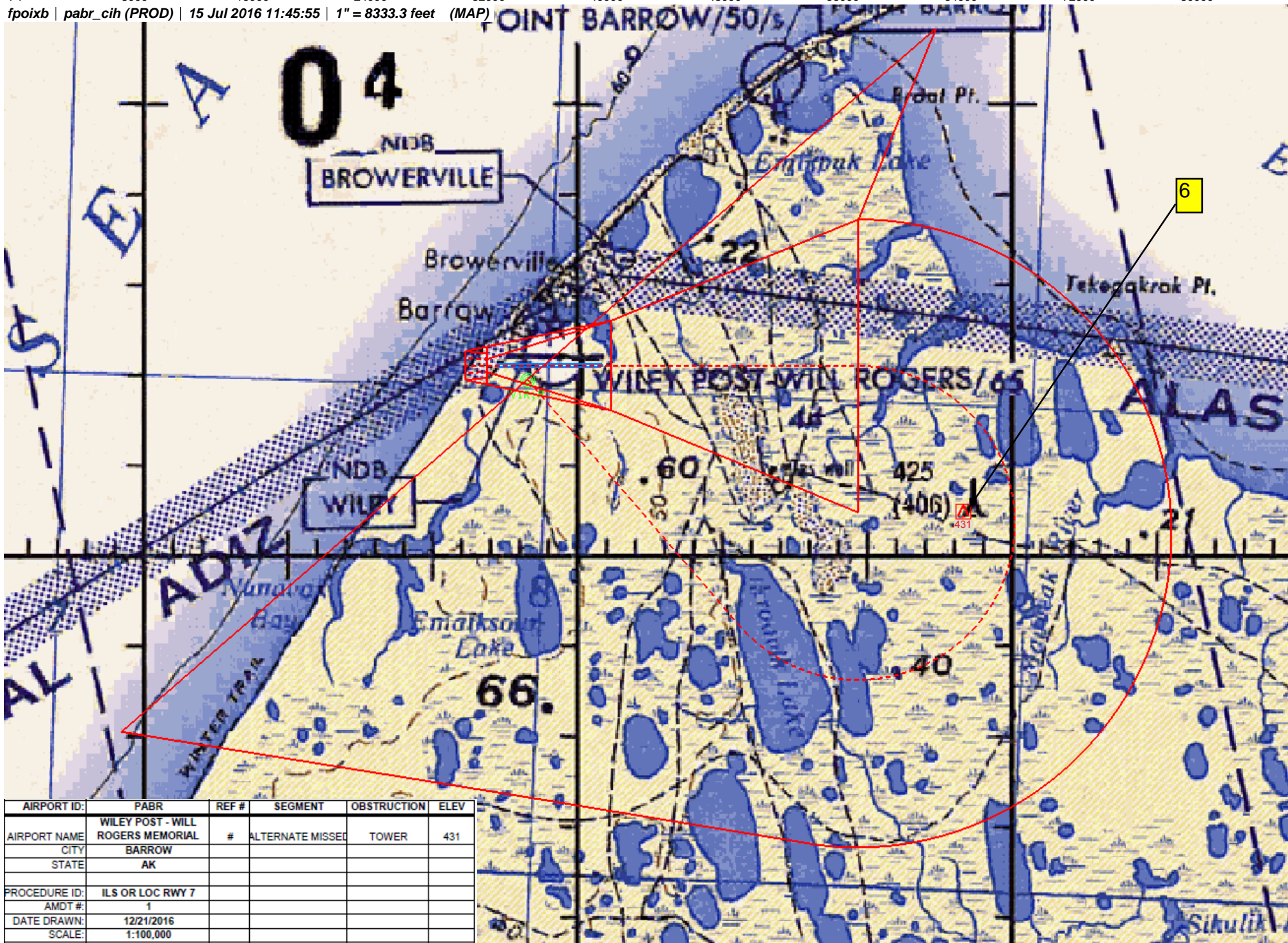
fpoixb | pabr_il7 (PROD) | 21 Jul 2016 08:41:22 | 1" = 8333.3 feet (MAP)



AIRPORT ID:	PABR	REF #	SEGMENT	OBSTRUCTION	ELEV
AIRPORT NAME	WILEY POST - WILL ROGERS MEMORIAL				
CITY	BARROW	5	LOC FINAL	VENT	78
STATE	AK	6	MISSED	TOWER	392
		7	CIRC CAT A	BLDG	137
		8	CIRC CAT B	TOWER	169
PROCEDURE ID:	ILS OR LOC RWY 7	8	CIRC CAT C	TOWER	169
AMDT #:	1	9	CIRC CAT D	AAO	266
DATE DRAWN:	12/21/2016				
SCALE:	1:100,000				



fpoixb | *pabr_cih* (PROD) | 15 Jul 2016 11:45:55 | 1" = 8333.3 feet (MAP)



AIRPORT ID:	PABR	REF #	SEGMENT	OBSTRUCTION	ELEV
AIRPORT NAME	WILEY POST - WILL ROGERS MEMORIAL	#	ALTERNATE MISSED	TOWER	431
CITY	BARROW				
STATE	AK				
PROCEDURE ID:	ILS OR LOC RWY 7				
AMDT #:	1				
DATE DRAWN:	12/21/2016				
SCALE:	1:100,000				

fpoixb | pabr_cih (PROD) | 15 Jul 2016 11:34:16 | 1" = 41666.7 feet (MAP)

NATIONAL WILDLIFE REFUGE INCLUDES
LANDS ON ISLANDS, ISLETS, ROCKS,
AS SPECIFIED IN THE ALASKA NATIONAL
CONSERVATION ACT.

