

Flight Procedure Tracking Form		Action: AMENDMENT	Task Type: IAP	Date Open: 10/15/2014	Task #: 2014101532719401001	Request #: 20141015327194
Procedure: VOR RWY 25 AMDT 1			Airport ID: PABR	Airport: WILEY POST-WILL ROGERS MEMORIAL		Reimbursable #: NO
City: BARROW	ST: AK	GPS #:	Estimated Chart Date: 03/02/2017		FICO #: 1175056	
Fac ID: BRW		Fac. Type: VOR_DME			Specialist: IVAN BLANCO	
Procedure Review						
	Rec'd	Rel'd	Full Name	Comments		
Lead:	11/24/2015	10/27/2016	DAVID DANNER	QUALITY		
QA:	10/27/2016	10/27/2016	DAVID DANNER	4	1/11CTabaka	
Liaison:	10/27/2016	10/28/2016	MARY MCDONALD	CHECKED		
Procedure Comments:			Remark Type: INFORMATION			
<p>AMENDMENT TO ADD MISSED APPROACH HOLDING PER FPT REQUEST. CONTACT JACOB POWERS: 405.954.8702 PAT MULQUEEN TEAM MANAGER: 405.954.4073</p> <p>PROJ CONVERTED FROM ABBREVIATED AMDT 0 A TO MAJOR AMDT 1.</p>						

QUALITY
28
CHECKED

VOR/DME BRW	APP CRS	Rwy Idg	5900
116.2	224°	TDZE	46
Chan 109		Apt Elev	49

VOR RWY 25

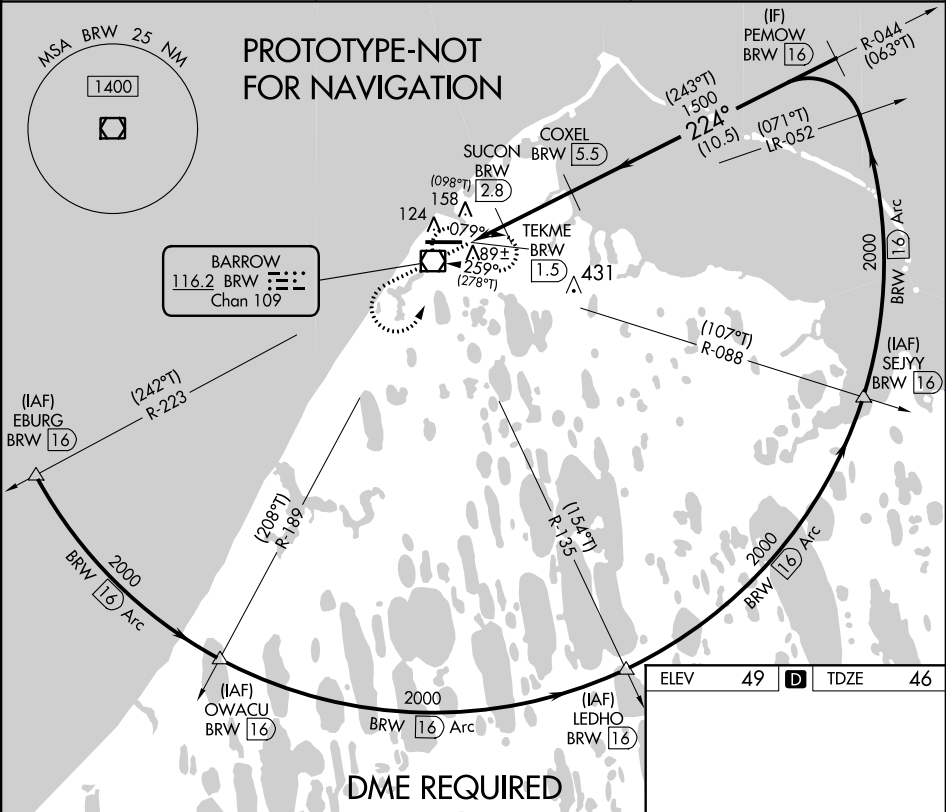
WILEY POST-WILL ROGERS MEMORIAL (BRW)(PABR)

⚠ Circling NA for CAT A North of RWY 7-25.

⚠ DME REQUIRED.

MISSED APPROACH: Climb to 1600 then climbing left turn to 2000 direct BRW VOR/DME and hold, continue climb-in-hold 2000.

AFIS 132.15	ANCHORAGE CENTER 135.3 239.25	BARROW RADIO 123.6 (CTAF) 0
----------------	----------------------------------	---------------------------------------



1600	2000	BRW				
↑	↶	☐				
CATEGORY	A	B	C	D		
S-25	340-1 294 (300-1)					
CIRCLING	440-1 391 (400-1)	520-1 471 (500-1)	520-1½ 471 (500-1½)	680-2 631 (700-2)		

ELEV 49 **D** TDZE 46

REIL Rwy 25 **0**
HIRL Rwy 7-25 **0**

BARROW, ALASKA

16203

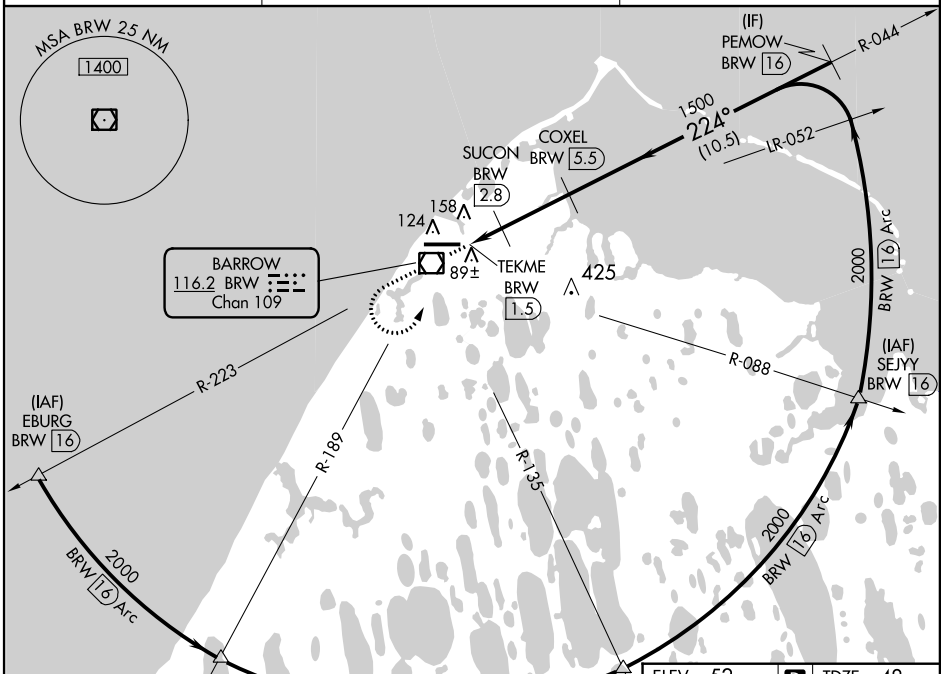
VOR/DME BRW 116.2 Chan 109	APP CRS 224°	Rwy Idg 5900 TDZE 48 Apt Elev 52
--	------------------------	---

VOR/DME RWY 25

WILEY POST-WILL ROGERS MEMORIAL (BRW)(PABR)

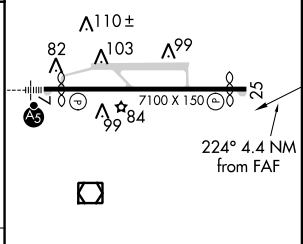
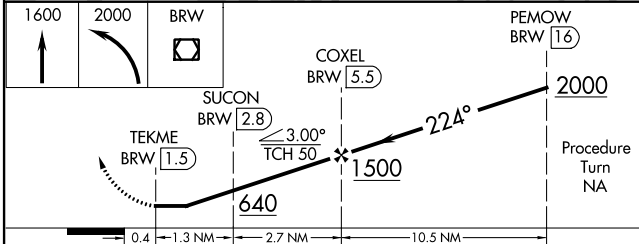
<p>When local altimeter setting not received, use Atkasuk altimeter setting and increase all MDA 140 feet and S-25 Cat C visibility $\frac{1}{4}$ mile, Cat D visibility $\frac{1}{2}$ mile and circling Cat C and D visibility $\frac{1}{4}$ mile. Circling NA for Cat A North of Rwy 7-25.</p>	<p>MISSED APPROACH: Climb to 1600 then climbing left turn to 2000 direct BRW VOR/DME.</p>
---	---

AFIS 132.15	ANCHORAGE CENTER 135.3 239.25	BARROW RADIO 123.6 (CTAF) 0
-----------------------	---	---------------------------------------



ELEV 52	D	TDZE 48
----------------	----------	----------------

DME REQUIRED



CATEGORY	A	B	C	D
S-25	340/50	292 (300-1)		
CIRCLING	420-1 368 (400-1)	520-1 468 (500-1)	520-1½ 468 (500-1½)	620-2 568 (600-2)

REIL Rwy 25 0	HIRL Rwy 7-25 0
---------------	-----------------

BARROW, ALASKA

Orig 29JUL10

WILEY POST-WILL ROGERS MEMORIAL (BRW)(PABR)

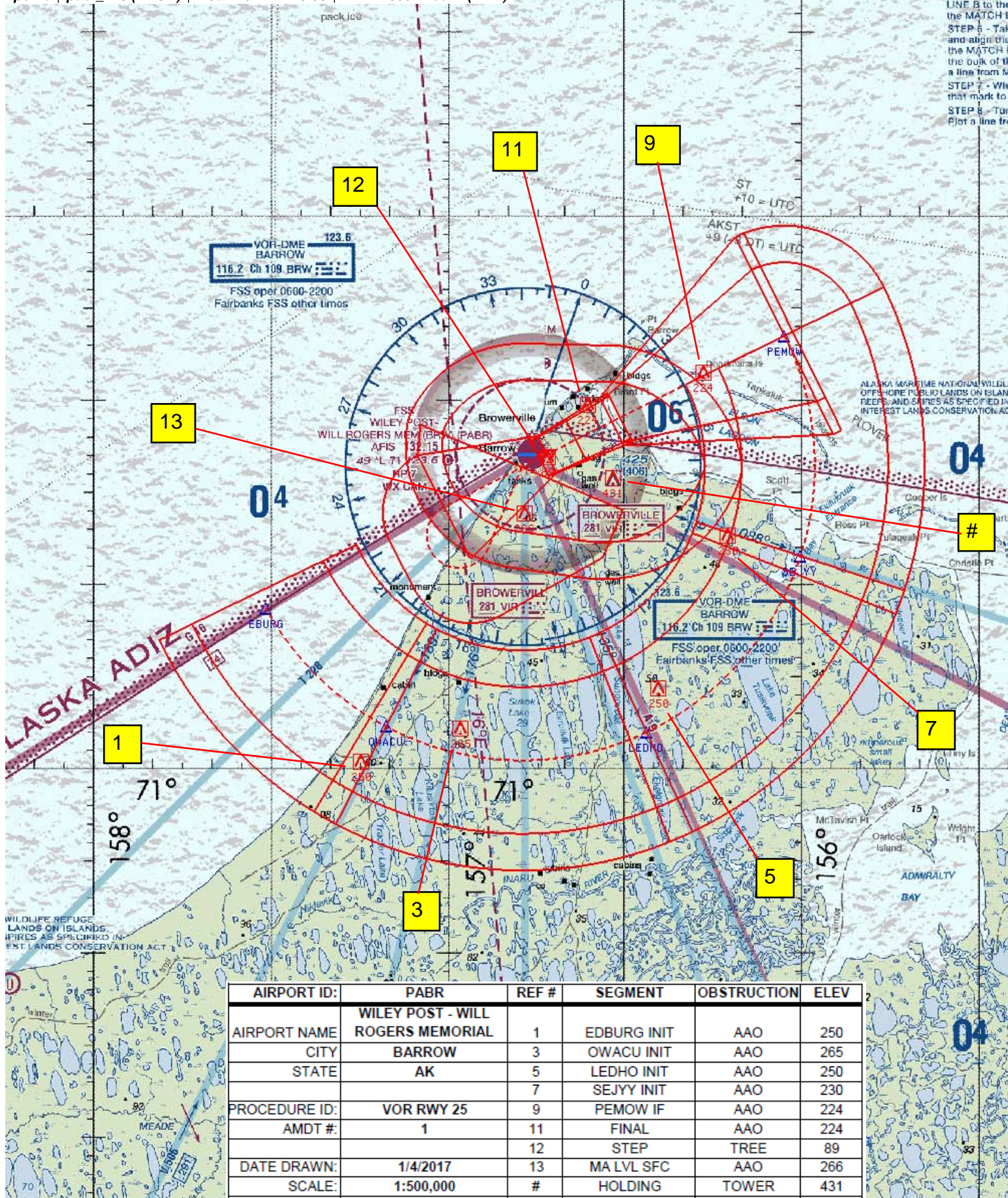
71°17'N-156°46'W

VOR/DME RWY 25

AK, 21 JUL 2016 to 15 SEP 2016

AK, 21 JUL 2016 to 15 SEP 2016

STEP 5 - Turn
LINE B to the
the MATCH L
STEP 6 - Tak
and align the
the MATCH L
the bulk of th
a line from M
STEP 7 - Wh
that mark to
STEP 8 - Turn
Plot a line fr



NM 1 2 3 4 5 6 7 8 9 10
FT 8000 16000 24000 32000 40000 48000 56000 64000

fpoixb | pabr_v25 (PROD) | 3 Jan 2017 15:07:50 | 1" = 8333.3 feet (MAP)

AIRPORT ID:	PABR	REF #	SEGMENT	OBSTRUCTION	ELEV
AIRPORT NAME	WILEY POST - WILL ROGERS MEMORIAL	11	FINAL	AAO	224
CITY	BARROW	12	STEP	TREE	89
STATE	AK	13	MISSED	AAO	266
PROCEDURE ID:	VOR RWY 25	15	CIRC CAT A	BLDG	137
		16	CIRC CAT B	TOWER	167
		16	CIRC CAT C	TOWER	167
AMDT #:	1	13	CIRC CAT D	AAO	266
DATE DRAWN:	1/4/2017				
SCALE:	1:100,000				

