


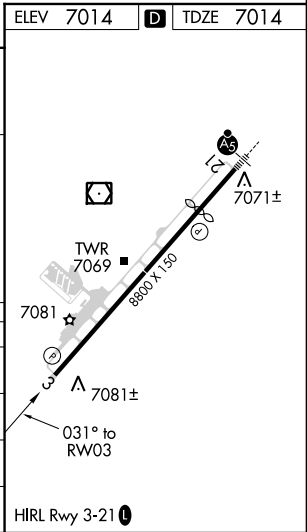
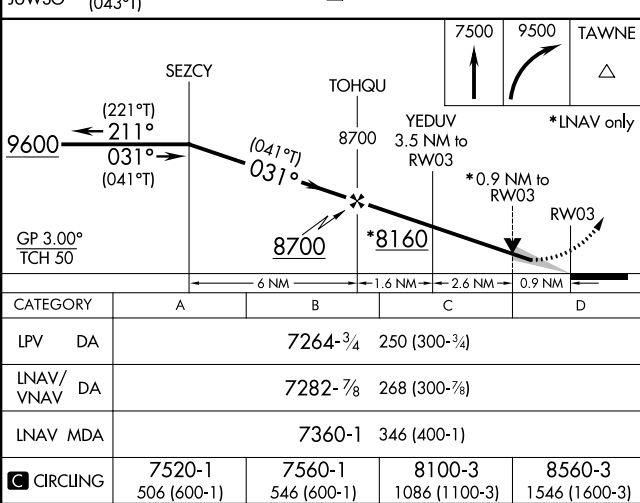
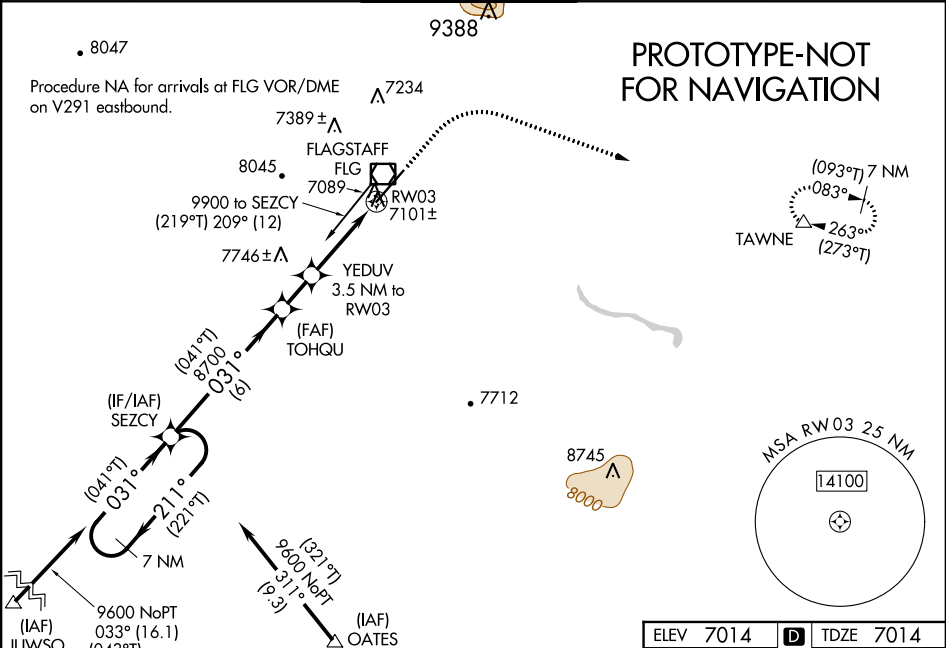
Flight Procedure Tracking Form		Action: AMENDMENT	Task Type: IAP	Date Open: 09/15/2015	Task #: 2014100825393201004	Request #: 20141008253932
Procedure: RNAV (GPS) RWY 3 AMDT 1				Airport ID: KFLG	Airport: FLAGSTAFF PULLIAM	Reimbursable #: NO
City: FLAGSTAFF	ST: AZ	GPS #:	Estimated Chart Date: 10/12/2017		FICO #:	
Fac ID: N/A		Fac. Type:			Specialist: KEVIN KESZLER	
Procedure Review						
	Rec'd	Rel'd	Full Name		Comments	
Lead:	04/20/2017		 J ZEDER 06/13/2017 ¹⁶			
QA:						
Liaison:						
Procedure Comments:			ENROUTE-NON			
			Remark Type: INFORMATION			
CONTACT DION LANCIA AT 1-405-954-1367 MAG VAR, ENROUTE NON						

WAAS CH 45718 W03A	APP CRS 031°	Rwy Idg TDZE Apt Elev 8800 7014 7014
--	------------------------	--

RNAV (GPS) RWY 3

FLAGSTAFF PULLIAM (FLG)

<div><div></div><div>For uncompensated Baro-VNAV systems, LNAV/VNAV NA below -19°C (-2°F) or above 44°C (112°F). DME/DME RNP-0.3 NA.</div></div>		MISSED APPROACH: Climb to 7500 then climbing right turn to 9500 direct TAWNE and hold.		
ATIS 125.8	PHOENIX APP CON 126.375 236.775	FLAGSTAFF TOWER ★ 134.55 (CTAF) 239.25	GND CON 121.9	UNICOM 122.95



WAAS CH 45718 W03A	APP CRS 027°	Rwy Idg 8800 TDZE 7014 Apt Elev 7014
--	------------------------	---

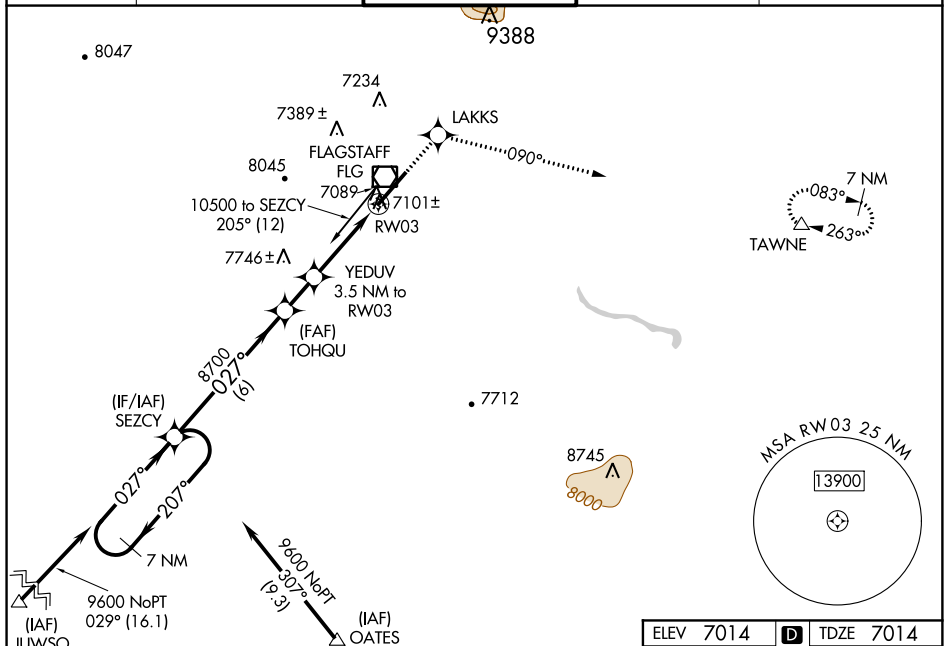
OLD

RNAV (GPS) RWY 3
FLAGSTAFF PULLIAM (FLG)

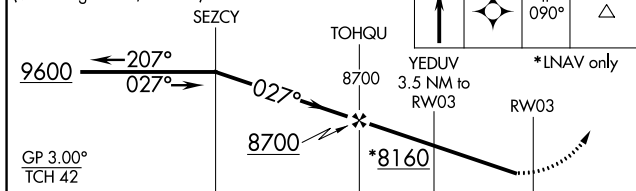
T When local altimeter setting not received, procedure NA. For uncompensated Baro-VNAV systems, LNAV/VNAV NA below -29°C (-20°F) or above 35°C (95°F). DME/DME RNP-0.3 NA. Helicopter visibility reduction below $\frac{3}{4}$ SM NA.

MISSED APPROACH: Climb to 9500 direct LAKKS and on track 090° to TAWNE and hold.

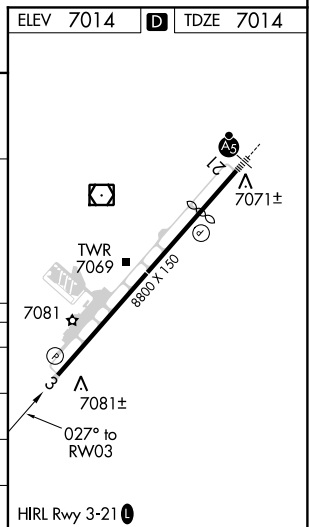
ATIS 125.8	PHOENIX APP CON 126.375 236.775	FLAGSTAFF TOWER ★ 134.55 (CTAF) 0 239.25	GND CON 121.9	UNICOM 122.95
----------------------	---	--	-------------------------	-------------------------



VGSI and RNAV glidepath not coincident (VGSI Angle 3.00/TCH 50).	9500	LAKKS	tr	TAWNE
---	------	-------	----	-------



			6 NM	1.6 NM	3.5 NM	
CATEGORY	A	B	C	D		
LPV DA	7264-1 250 (300-1)					
RNAV/ VNAV DA	7479-1 $\frac{3}{4}$ 465 (500-1 $\frac{3}{4}$)					
RNAV MDA	7360-1 346 (400-1)				7360-1 $\frac{1}{4}$ 346 (400-1 $\frac{1}{4}$)	
CIRCLING	7520-1 506 (600-1)		7520-1 $\frac{1}{2}$ 506 (600-1 $\frac{1}{2}$)		7580-2 566 (600-2)	



FLAGSTAFF PULLIAM (FLG)
RNAV (GPS) RWY 3

Flagstaff Pulliam (KFLG)
Flagstaff AZ
1:500,000
RNAV (GPS) RWY 03 Amdt 1

11. Level Missed
7395 AAO

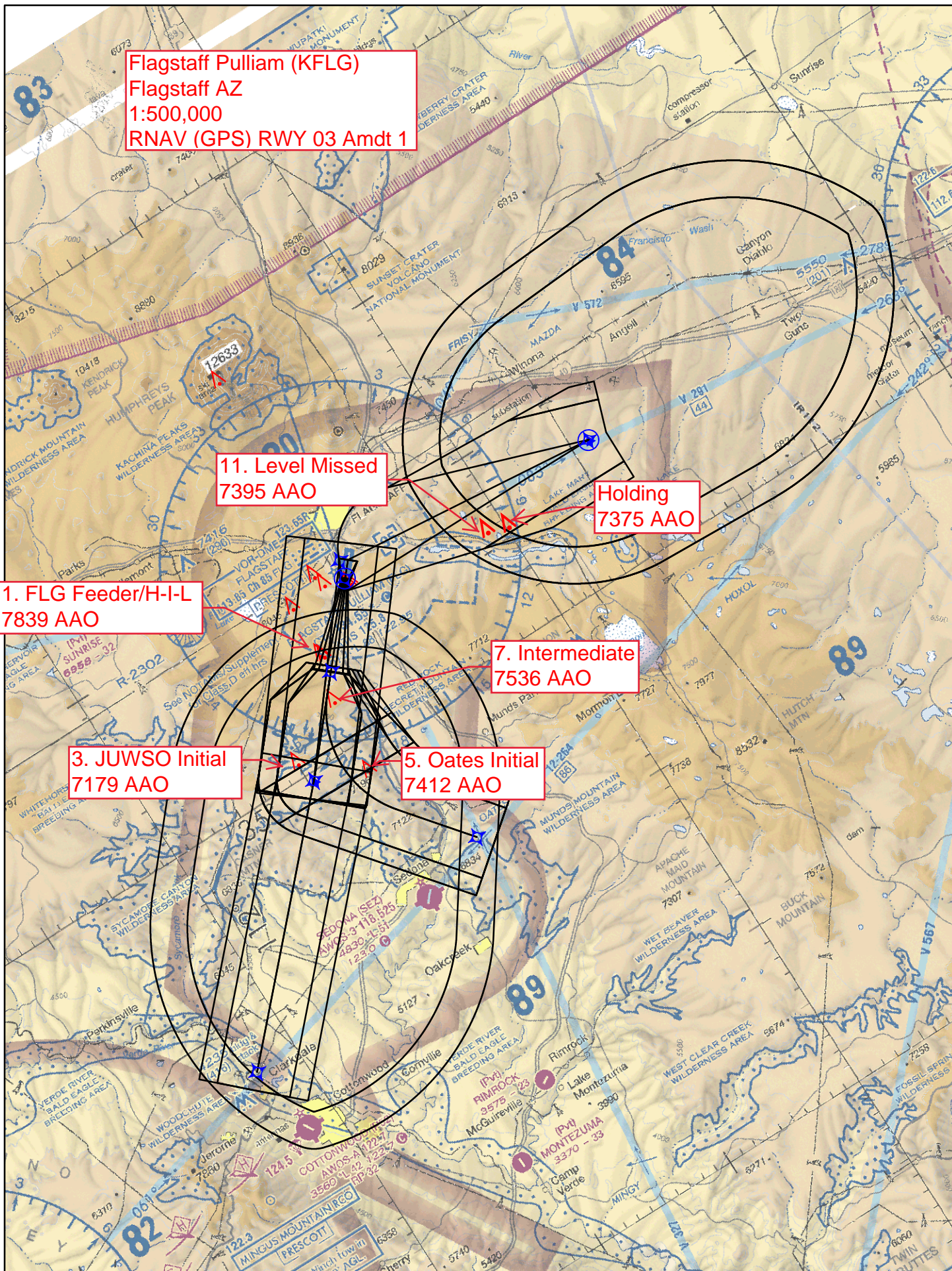
Holding
7375 AAO

1. FLG Feeder/H-I-L
7839 AAO

7. Intermediate
7536 AAO

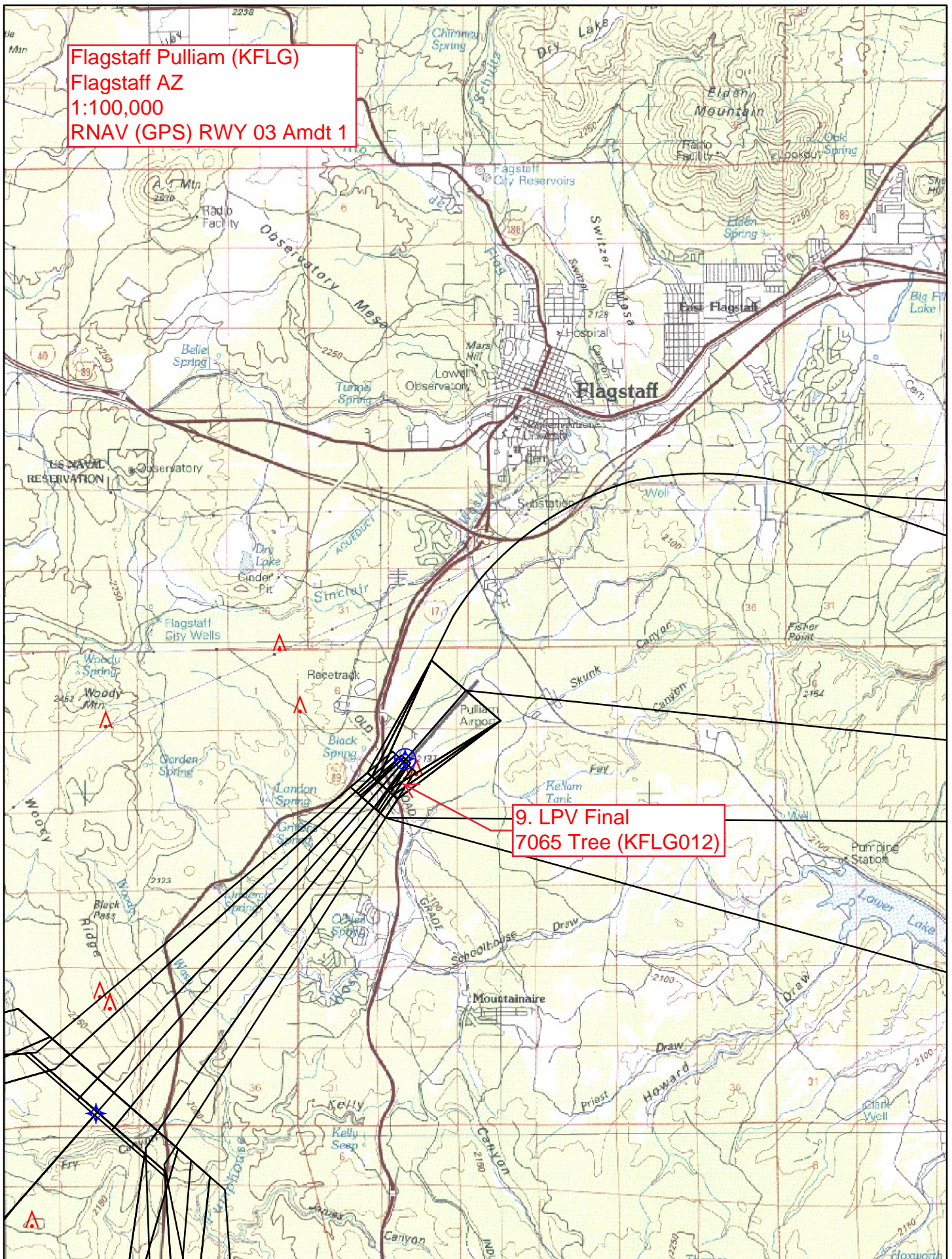
3. JUWSO Initial
7179 AAO

5. Oates Initial
7412 AAO



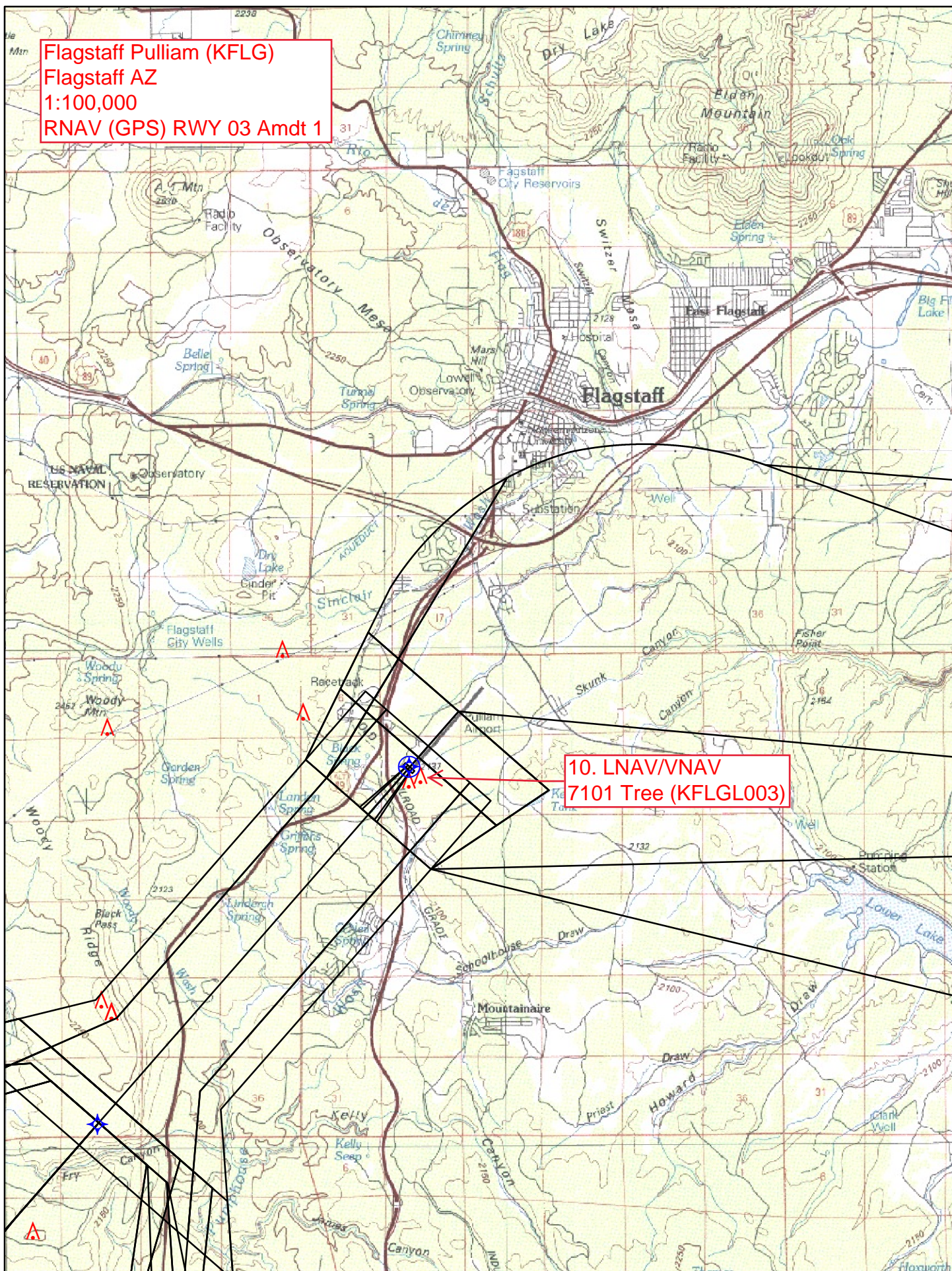
Flagstaff Pulliam (KFLG)
Flagstaff AZ
1:100,000
RNAV (GPS) RWY 03 Amdt 1

9. LPV Final
7065 Tree (KFLG012)



Flagstaff Pulliam (KFLG)
Flagstaff AZ
1:100,000
RNAV (GPS) RWY 03 Amdt 1

10. LNAV/VNAV
7101 Tree (KFLGL003)



Flagstaff Pulliam (KFLG)
Flagstaff AZ
1:100,000
RNAV (GPS) RWY 03 Amdt 1

14. CAT B CIRC
7246 Tree (KFLG0091)

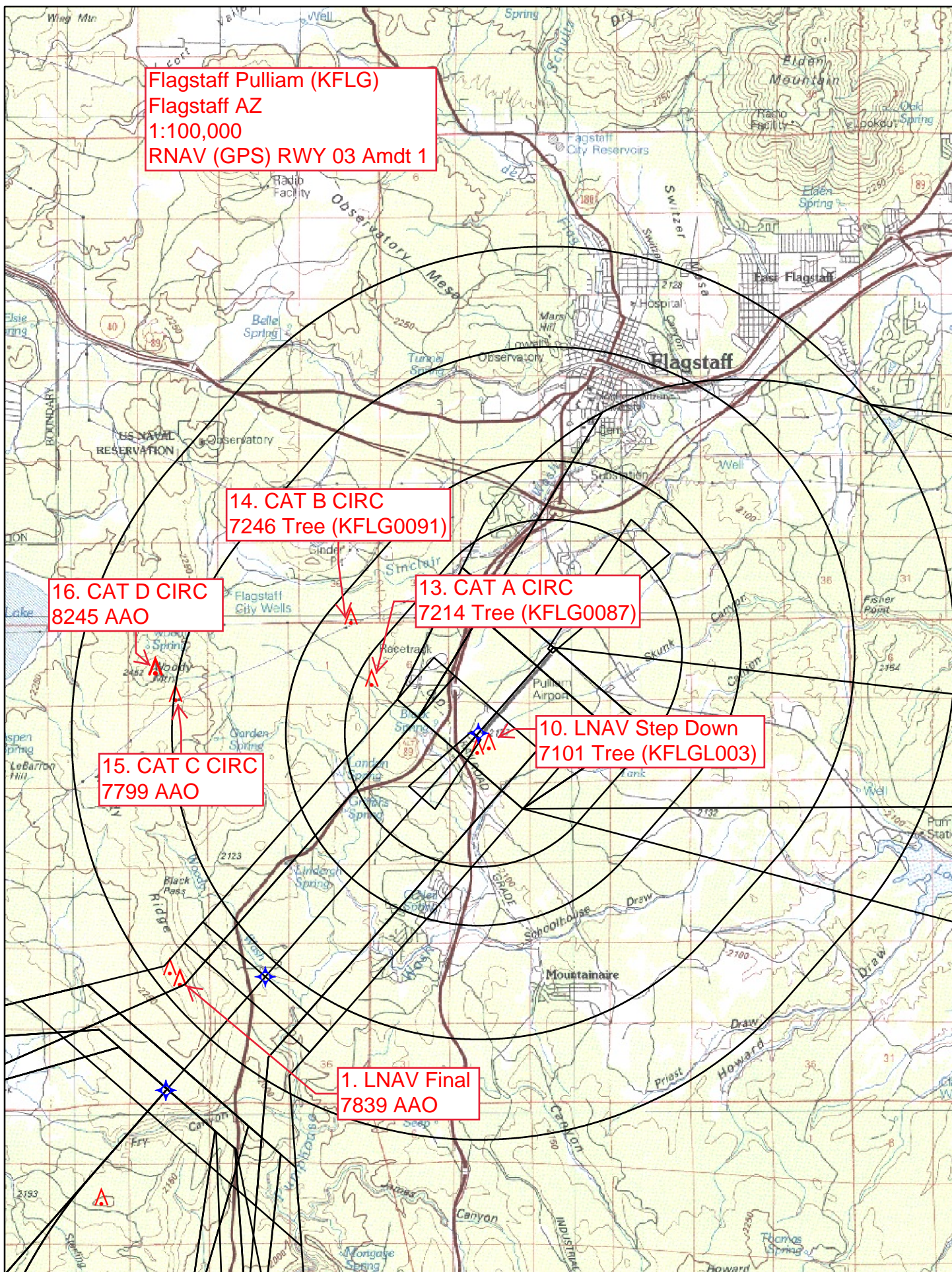
16. CAT D CIRC
8245 AAO

13. CAT A CIRC
7214 Tree (KFLG0087)

10. LNAV Step Down
7101 Tree (KFLGL003)

15. CAT C CIRC
7799 AAO

1. LNAV Final
7839 AAO



TERMINAL AIRSPACE DATA REQUIREMENTS

CITY: **FLAGSTAFF**

STATE: **AZ**

AIRPORT NAME: **FLAGSTAFF PULLIAM**

ID: **KFLG**

PROCEDURE: **RNAV (GPS) RWY 3**

AMDT: **ORIG**

DOCKET # :

(96-AXX-X/Required/Not Required)

ALL DIST TO 1/100 NM; ELEV TO NEAREST FT; COORD TO 1/100 SEC; DEG TO 1/100 DG.

1. Distance from THLD to 1000' point 4.85
(Enter THLD, FAF, ARP, FACILITY, as appropriate)
2. Width of FINAL segment at 1000' point 2.00
(Enter appropriate segment, final, intermediate, etc.)
3. True Course of FINAL segment containing 1000' point 041.13
4. High Terrain in FINAL segment containing 1000' point 7566
5. Distance from FAF to 1500' point 4.41
(If 1500' point in PT maneuvering area or holding pattern note in remarks)
6. Width of INTERMEDIATE segment at 1500' point 7.29
7. True Course of INTERMEDIATE segment containing 1500' point 041.09
8. High Terrain in INTERMEDIATE segment containing 1500' point 7336
9. Threshold Coordinates (if straight-in) ... 350752.39N / 1114044.13W
10. ARP Coordinates 350825.10N / 1114009.30W
11. Runway Approach End and distance furthest from ARP RWY 21
Distance 0.72 NM
12. FAF Coordinates 350402.01N / 1114449.10W
(Click to Select)

REMARKS: Approach/Drawing attached.