

<b>Flight Procedure Tracking Form</b>		<b>Action:</b> FLIGHT CHECK	<b>Task Type:</b> IAP	<b>Date Open:</b> 04/02/2015	<b>Task #:</b> 2014100726604901002	<b>Request #:</b> 20141007266049
<b>Procedure:</b> RNAV (GPS) RWY 1 ORIG			<b>Airport ID:</b> KPSO	<b>Airport:</b> STEVENS FIELD		<b>Reimbursable #:</b> NO
<b>City:</b> PAGOSA SPRINGS	<b>ST:</b> CO	<b>GPS #:</b>	<b>Estimated Chart Date:</b> 03/31/2016		<b>FICO #:</b>	
<b>Fac ID:</b> N/A		<b>Fac. Type:</b>			<b>Specialist:</b> Stephen Peterson	
<b>Procedure Review</b>						
	<b>Rec'd</b>	<b>Rel'd</b>	<b>Full Name</b>	<b>Comments</b>		
<b>Lead:</b>	04/08/2015					
<b>QA:</b>				4 1/20CTabaka		
<b>Liaison:</b>						
<b>Procedure Comments:</b>			ENROUTE-NON			
			<b>Remark Type:</b> INFORMATION			
CONTACT ALLAN WILL/JOHNNIE BAKER: 405.954.6103/5148.						

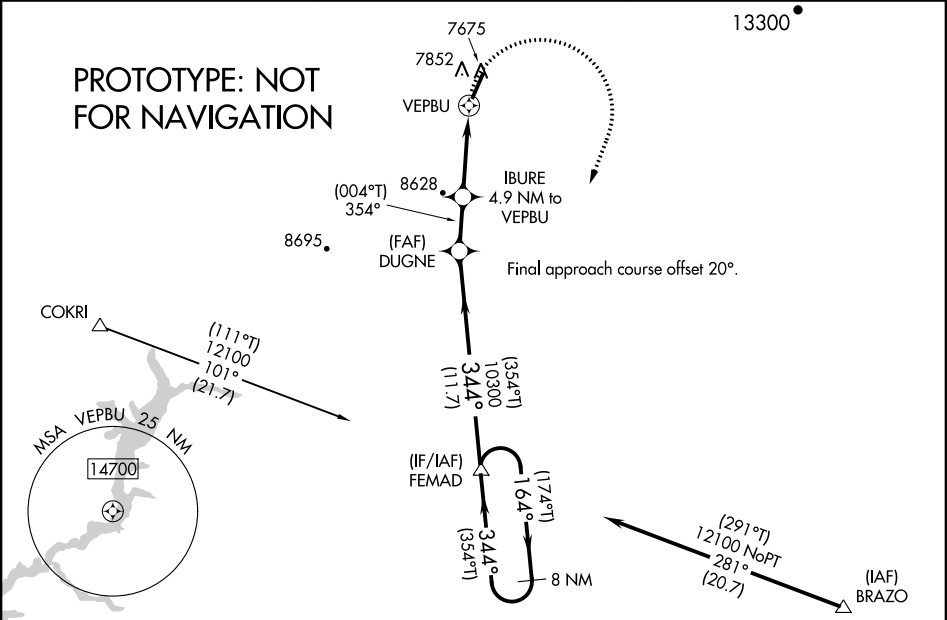
WAAS CH <b>58238</b> <b>W01A</b>	APP CRS <b>354°</b>	Rwy Idg <b>8100</b> TDZE <b>7637</b> Apt Elev <b>7664</b>
--	------------------------	---

RNAV (GPS) RWY 1  
STEVENS FIELD (PSO)

**⚠** DME/DME RNP-0.3 NA. Helicopter visibility reduction below ¾ SM NA.  
**⚠** Circling to Rwy 19 NA at night. When local altimeter setting not received, use Durango altimeter setting and increase all MDA 220 feet and LP and LNAV visibility Cat B ¼ mile and Cat C ¾ mile, and Circling Cats A/B ¼ mile.

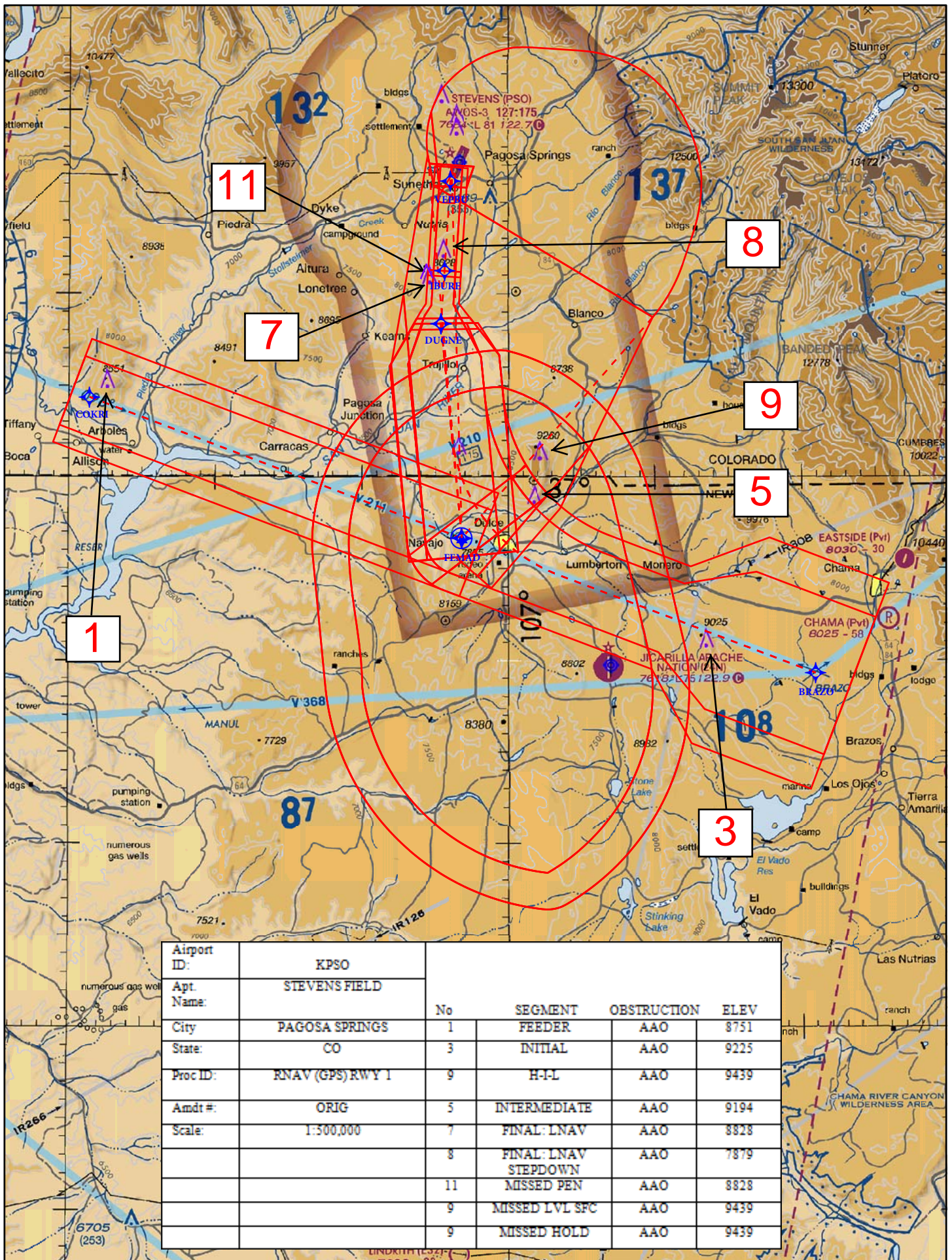
MISSED APPROACH: Climbing right turn to 12100 direct FEMAD and hold.

AWOS-3 <b>127.175</b>	DENVER CENTER <b>118.575 348.7</b>	UNICOM <b>122.7 (CTAF) 0</b>
--------------------------	---------------------------------------	---------------------------------



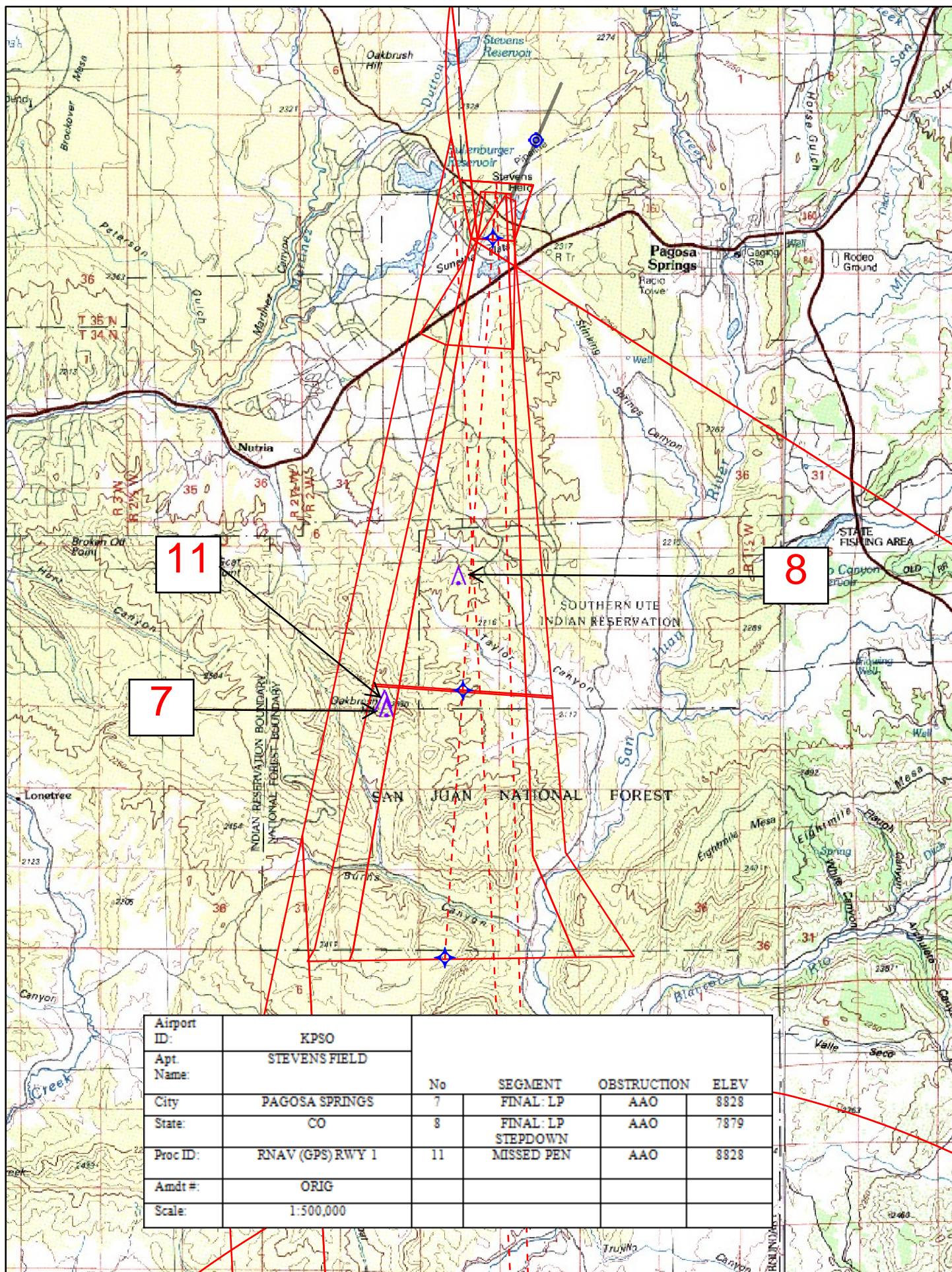
ELEV 7664		TDZE 7637	
MIRL Rwy 1-19 0		REIL Rwys 1 and 19 0	
PAGOSA SPRINGS, COLORADO		STEVENS FIELD (PSO)	
Orig FIG		37°17'N-107°03'W	
RNAV (GPS) RWY 1		RNAV (GPS) RWY 1	





Airport ID:	KPSO				
Apt. Name:	STEVENS FIELD				
City:	PAGOSA SPRINGS	No	SEGMENT	OBSTRUCTION	ELEV
State:	CO	1	FEEDER	AAO	8751
Proc ID:	RNAV (GPS) RWY 1	3	INITIAL	AAO	9225
Amdt #:	ORIG	9	H-I-L	AAO	9439
Scale:	1:500,000	5	INTERMEDIATE	AAO	9194
		7	FINAL: LNAV	AAO	8828
		8	FINAL: LNAV STEPDOWN	AAO	7879
		11	MISSED PEN	AAO	8828
		9	MISSED LVL SFC	AAO	9439
		9	MISSED HOLD	AAO	9439

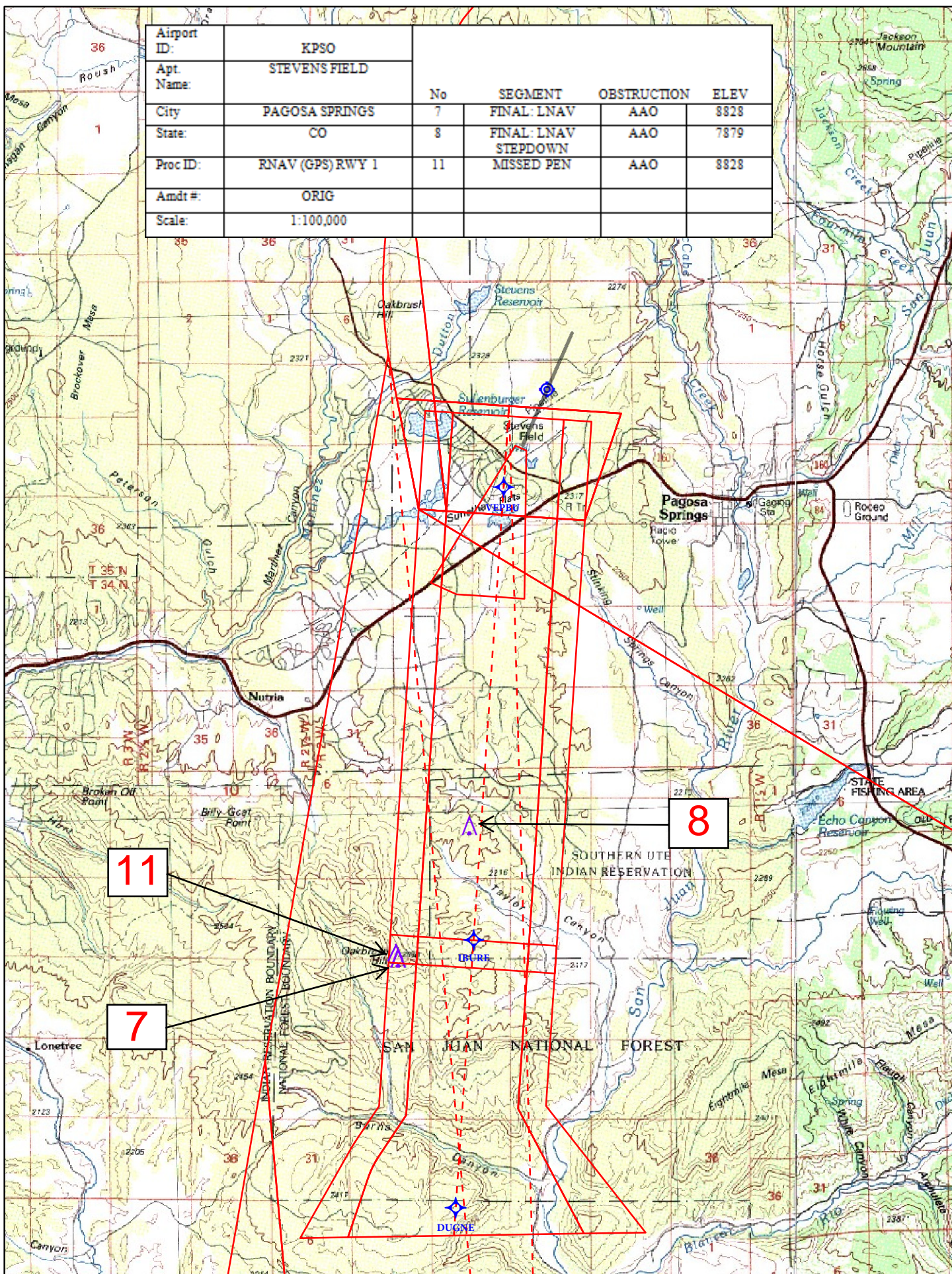




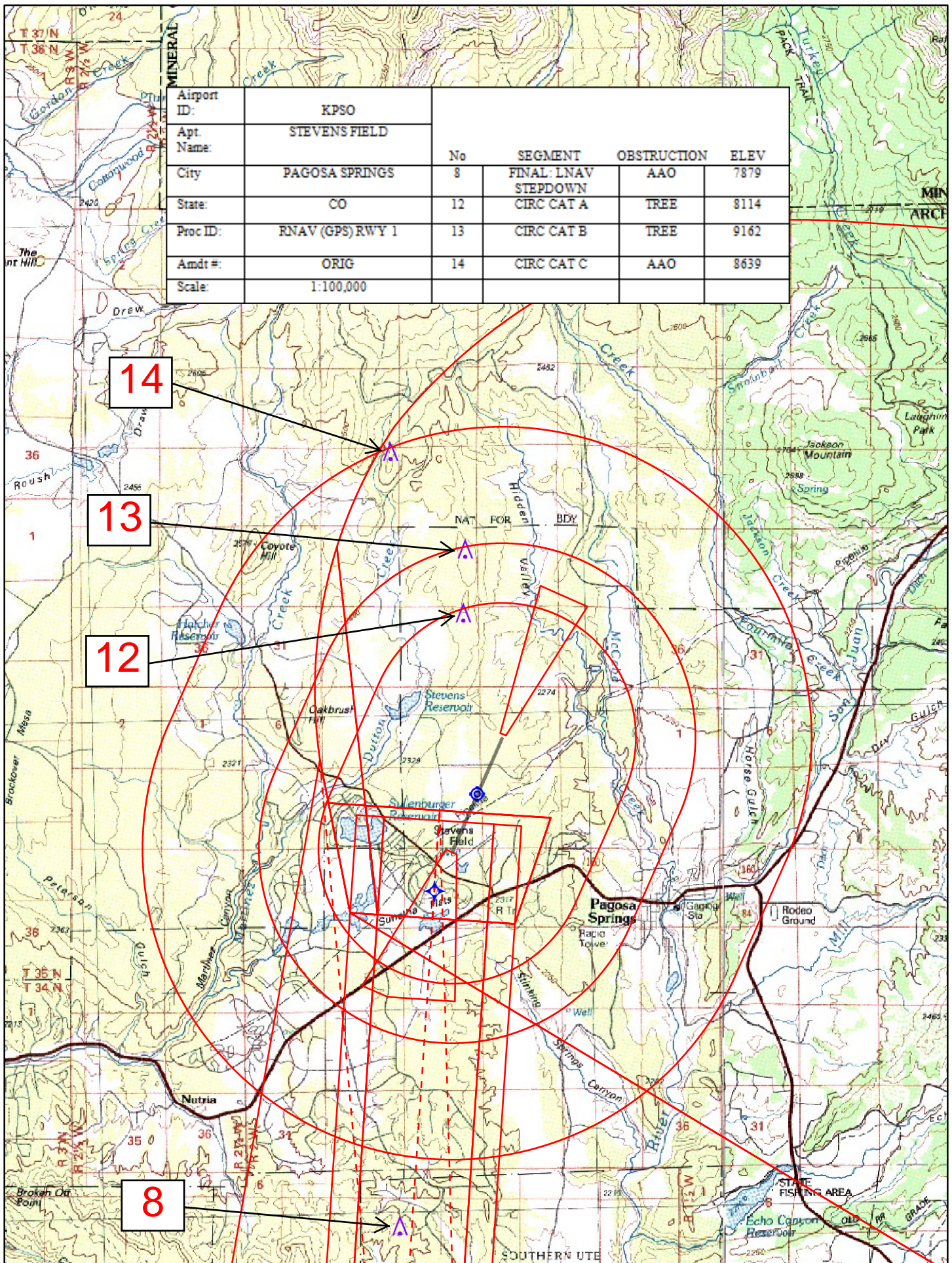
Airport ID:	KPSO				
Apt. Name:	STEVENS FIELD				
City:	PAGOSA SPRINGS	No	7	SEGMENT	FINAL LP
State:	CO		8	OBSTRUCTION	AAO
Proc ID:	RNAV (GPS) RWY 1		11		AAO
Amdt #:	ORIG				
Scale:	1:500,000				



Airport ID:	KPSO				
Apt. Name:	STEVENS FIELD				
City:	PAGOSA SPRINGS	No	SEGMENT	OBSTRUCTION	ELEV
State:	CO	7	FINAL LNAV	AAO	8828
Proc ID:	RNAV (GPS) RWY 1	8	FINAL LNAV STEPDOWN	AAO	7879
Amdt #:	ORIG	11	MISSED PEN	AAO	8828
Scale:	1:100,000				









# TERMINAL AIRSPACE DATA REQUIREMENTS

CITY: PAGOSA SPRINGS

STATE: CO

AIRPORT NAME: STEVENS FIELD

ID: KPSO

PROCEDURE: RNAV (GPS) RWY 1

AMDT: ORIG

DOCKET # :

(96-AXX-X/Required/Not Required)

**ALL DIST TO 1/100 NM; ELEV TO NEAREST FT; COORD TO 1/100 SEC; DEG TO 1/100 DG.**

- |  |            |                                |             |
|--|------------|--------------------------------|-------------|
| 1. Distance from   | MAP        | to 1000' point                 | 4.98        |
| (Enter THLD, FAF, ARP, FACILITY, as appropriate)                           |            |                                |             |
| 2. Width of  | FINAL      | segment at 1000' point         | 1.29        |
| (Enter appropriate segment , final, intermediate, etc.)                    |            |                                |             |
| 3. True Course of  | FINAL      | segment containing 1000' point | 003.79      |
| 4. High Terrain in   | FINAL      | segment containing 1000' point | 8279        |
| 5. Distance from   | MAP        | to 1500' point                 | 6.79        |
| (If 1500' point in PT maneuvering area or holding pattern note in remarks) |            |                                |             |
| 6. Width of  | FINAL      | segment at 1500' point         | 1.68        |
| 7. True Course of  | FINAL      | segment containing 1500' point | 003.79      |
| 8. High Terrain in   | FINAL      | segment containing 1500' point | 8279        |
| 9. Threshold Coordinates (if straight-in) ...                              | 371633.87N | /                              | 1070341.74W |
| 10. ARP Coordinates .....  | 371710.50N | /                              | 1070321.60W |
| 11. Runway Approach End and distance furthest from ARP.....RWY             |            |                                | 1           |
|  |            | Distance                       | 0.67 NM     |
| 12. FAF Coordinates .....  | 370819.55N | /                              | 1070435.57W |
| (Click to Select)  |            |                                |             |

## REMARKS:

MAP (VEPBU) 3000 FT PRIOR TO THLD ON RWY CENTERLINE: 371606.73N/1070356.81W

# CHECKLIST SUPPORT OF A CATEGORICAL EXCLUSION DETERMINATION

Airport Stevens Field (KPSO), CO Project/Action RNAV (GPS) Rwy 1, Orig

Preparer Kate Alfred Signature  Date 4-6-2015

Circumstance	<b>Impact Potential</b>		<b>Comments / Follow-up</b> See attached comments if needed.
	Yes	No	
<b>Air Quality:</b> Potential to affect the quality including air quality of the human environment.		X	
<b>Coastal Resources:</b> Local, State or Federal (i.e. Department of Fish and Wildlife) identified areas.		X	
<b>Compatible Land Use:</b> Local government requirements or restrictions.		X	
<b>Construction Impacts:</b> Local, State, Tribal, or Federal ordinances.		X	
<b>Department of Transportation Act: Sec. 4(f):</b> i.e. Impact to publically owned park, recreational area, refuge, or historic site.		X	
<b>Farmlands:</b> Compatibility with affected farmland.		X	
<b>Fish, Wildlife and Plants:</b> Impact to endangered or threatened species.		X	
<b>Floodplains:</b> Area within the limits (or buffers) of a base floodplain.		X	
<b>Hazardous Materials, Pollution Prevention, and Solid Waste:</b> Compliance with applicable pollution control standards.		X	
<b>Historical, Architectural, Archeological, and Cultural Resources:</b> Impact to any eligible for or listed in applicable guidance.		X	
<b>Light emissions and Visual Impacts:</b> Annoyance among people in vicinity/interfere with their normal activities.		X	
<b>Natural Resources and Energy Supply:</b> Effect on local supplies of energy or natural resources. Pollution prevention.		X	
<b>Noise:</b> Noise impacts expected. Cumulative noise energy exposure impact.		X	
<b>Secondary (Induced) Impacts:</b> Shifts in patterns of population movement and growth; public service demands; changes in business and economic activity.		X	
<b>Water Quality:</b> Impound, divert, drain, control, or modify waters. Contamination. (See Clean Water Act if necessary.)		X	

<b>Socioeconomic Impacts (SI), Environmental Justice (EJ), and Children's Environmental Health and Safety Risks (CS):</b> i.e. SI: Local/State laws, regulations, ordinances for zoning, transportation, economic development, etc. EJ: Minority, Low-Income populations, CS: Disproportionate health or safety risk to children.		X	
<b>Wetlands:</b> Impact to identified wetlands.		X	
<b>Wild and Scenic Rivers:</b> Rivers identified or having potential for designation in the Nationwide Rivers Inventory under the Wild and Scenic River Act.		X	