

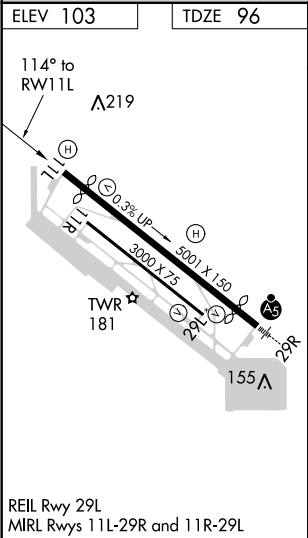
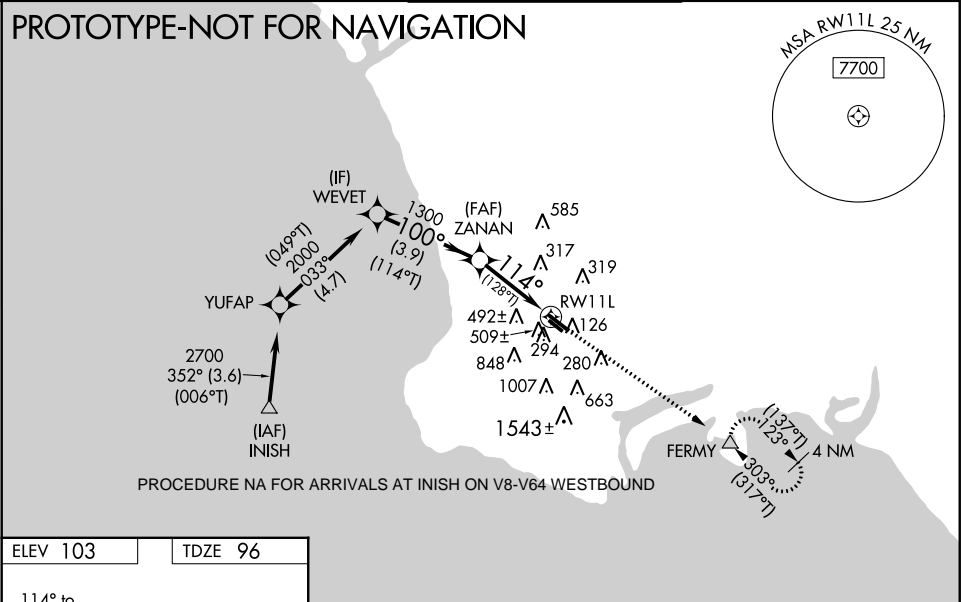
Flight Procedure Tracking Form		Action: FLIGHT CHECK	Task Type: IAP	Date Open: 11/10/2015	Task #: 2014100726414501003	Request #: 20141007264145
Procedure: RNAV (GPS) RWY 11L AMDT 1			Airport ID: KTOA	Airport: ZAMPERINI FIELD		Reimbursable #: NO
City: TORRANCE	ST: CA	GPS #:	Estimated Chart Date: 07/21/2016		FICO #:	
Fac ID: N/A		Fac. Type:			Specialist: HERMAN ROGERS	
Procedure Review						
	Rec'd	Rel'd	Full Name	Comments		
Lead:	01/28/2016					
QA:				CWS 6/24/16		
Liaison:						
Procedure Comments:			ENROUTE-NON	Remark Type: INFORMATION		
CONTACT: ALLEN WILL/JOHNNY BAKER, SUB-TEAM MANAGERS, 405.954.6103/5148						

WAAS CH 61125 W11A	APP CRS 114°	Rwy Idg 4460 TDZE 96 Apt Elev 103
--	------------------------	--

RNAV (GPS) RWY 11L

ZAMPERINI FIELD (TOA)

<p>▼ For uncompensated Baro-VNAV systems, LNAV/VNAV NA below 3°C (38°F) or above 54°C (130°F). Circling NA SW of Rwy 11R-29L. Baro-VNAV and VDP NA when using Los Angeles Intl altimeter setting. DME/DME RNP-0.3 NA.</p> <p>When local altimeter setting not received, except for operators with approved weather reporting service, use Los Angeles Intl altimeter setting: increase LPV DA to 390 FEET AND LNAV/VNAV DA to 714 FEET AND ALL MDA 40 FEET; INCREASE LNAV/VNAV ALL CATS VISIBILITY, LNAV CAT C VISIBILITY AND CIRCLING CAT C VISIBILITY 1/8 SM. RWY 11L Helicopter visibility reduction below ¾ SM NA.</p>			MISSED APPROACH: Climb to 2700 direct FERMV and hold, continue climb-in-hold to 2700.	
ATIS 125.6	SOCAL APP CON 124.3 363.2 (Rwys 11L, 11R) 127.2 269.6 (Rwys 29L, 29R)	TORRANCE TOWER★ 133.075 257.8 (NORTH) 124.0 (CTAF) 0 257.8 (SOUTH)		GND CON 120.9
			UNICOM 122.95	



VGSI and RNAV glidepath not coincident (VGSI Angle 3.50/TCH 10).				2700	FERMV
WEVET				*LNAV only	
2000					
GP 3.43° TCH 59					
3.9 NM					
1.7 NM					
1.5 NM					
CATEGORY	A	B	C	D	
LPV DA	366-7/8-270			NA	
LNAV/VNAV DA	690-1¾ 594			NA	
LNAV MDA	640-1	544	640-1½ 577 (600-1½)	NA	
CIRCLING	640-1 537 (600-1)	680-1 577 (600-1)	680-1½ 577 (600-1½)	NA	

OLD

TORRANCE, CALIFORNIA

AL-5179 (FAA)

16035

WAAS CH 61125 W11A	APP CRS 114°	Rwy Idg TDZE 96 Apt Elev 103	4460
--	------------------------	--	-------------

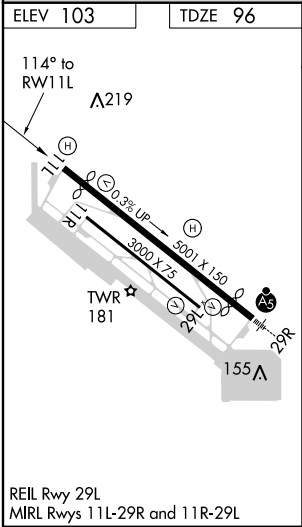
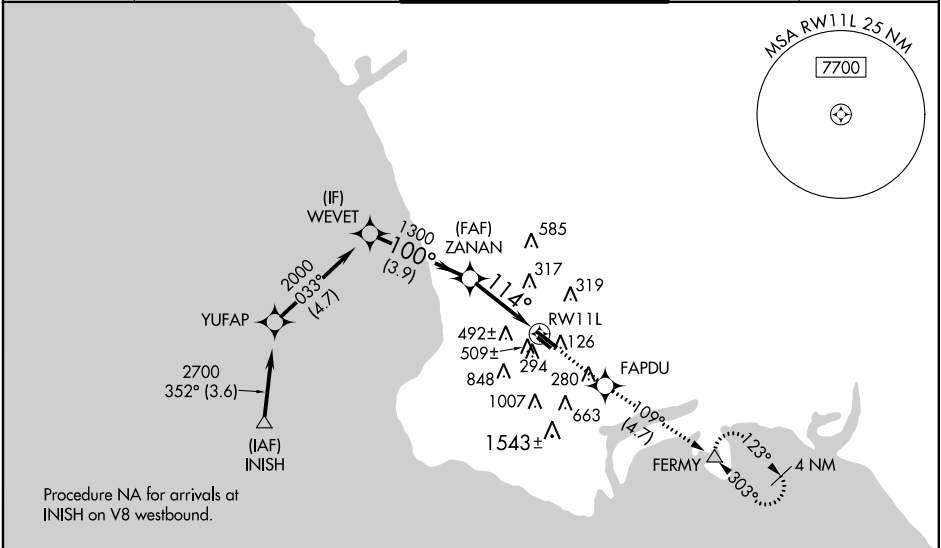
RNAV (GPS) RWY 11L

ZAMPERINI FIELD (TOA)

⚠ For uncompensated Baro-VNAV systems, LNAV/VNAV NA below -15°C (5°F) or above 54°C (130°F). When local altimeter setting not received, except for operators with approved weather reporting service, use Los Angeles Intl altimeter setting increase all DA 24 feet, and all MDA 40 feet, and increase LNAV/VNAV visibility all Cats ½ mile. Circling NA southwest of Rwy 11R-29L. DME/DME RNP-0.3 NA. Helicopter visibility reduction below ¾ SM NA. Baro-VNAV and VDP NA when using Los Angeles Intl altimeter setting.

MISSED APPROACH: Climb to 2700 direct FAPDU on track 109° to FERMY and hold, continue climb-in-hold to 2700.

ATIS 125.6	SOCAL APP CON 124.3 363.2 (Rwys 11L, 11R) 127.2 269.6 (Rwys 29L, 29R)	TORRANCE TOWER★ 133.075 257.8 (NORTH) 124.0 (CTAF) 0 257.8 (SOUTH)	GND CON 120.9	UNICOM 122.95
----------------------	---	---	-------------------------	-------------------------



VGSI and RNAV glidepath not coincident (VGSI Angle 3.50/TCH 10).		2700 ↑		FAPDU ✱		tr 109°		FERMY △	
WEVET		ZANAN							
2000		1300		*LNAV only					
100°		114°		*1.5 NM to RW11L					
GP 3.43° TCH 59		1300		RW11L					
3.9 NM		1.7 NM		1.5 NM					
CATEGORY	A	B	C	D					
LPV DA	382 7/8	286 (300-7/8)	NA						
LNAV/ VNAV DA	587-1 3/8	491 (500-1 3/8)	NA						
LNAV MDA	640-1	544 (600-1)	NA						
CIRCLING	640-1	537 (600-1)	NA						

TORRANCE, CALIFORNIA
Orig-A 29MAY14

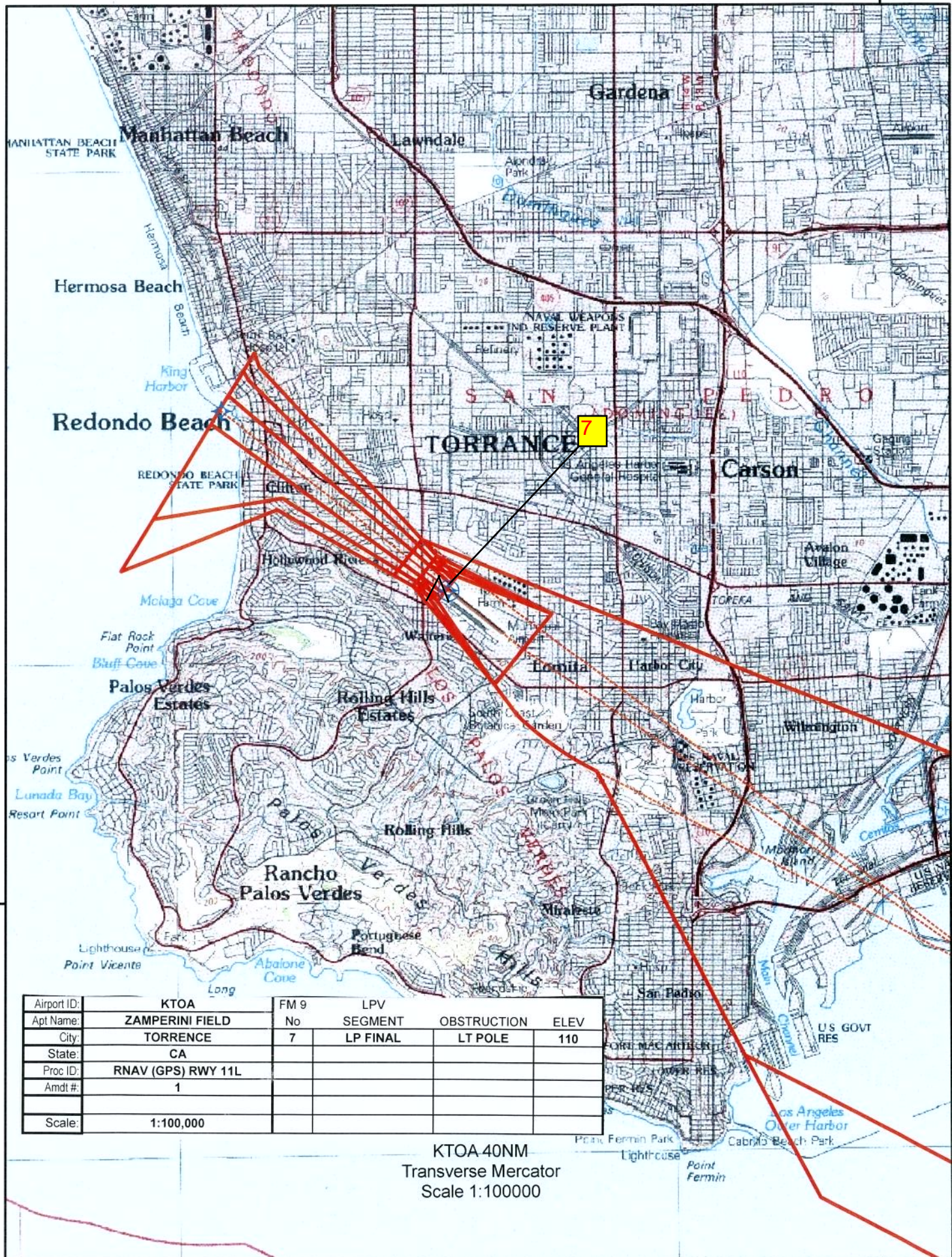
33°48'N-118°20'W

RNAV (GPS) RWY 11L

ZAMPERINI FIELD (TOA)

SW-3, 04 FEB 2016 to 03 MAR 2016

SW-3, 04 FEB 2016 to 03 MAR 2016

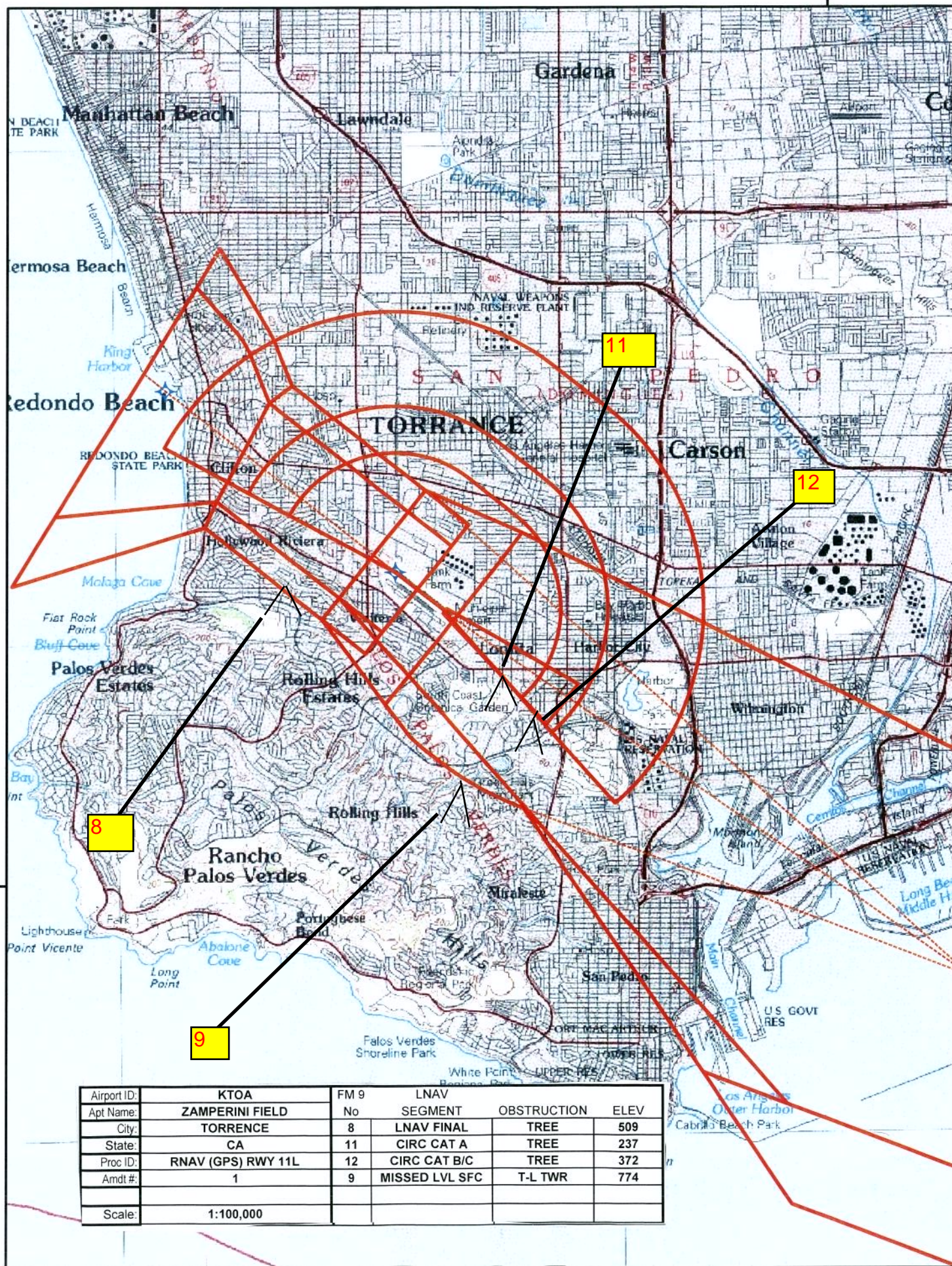


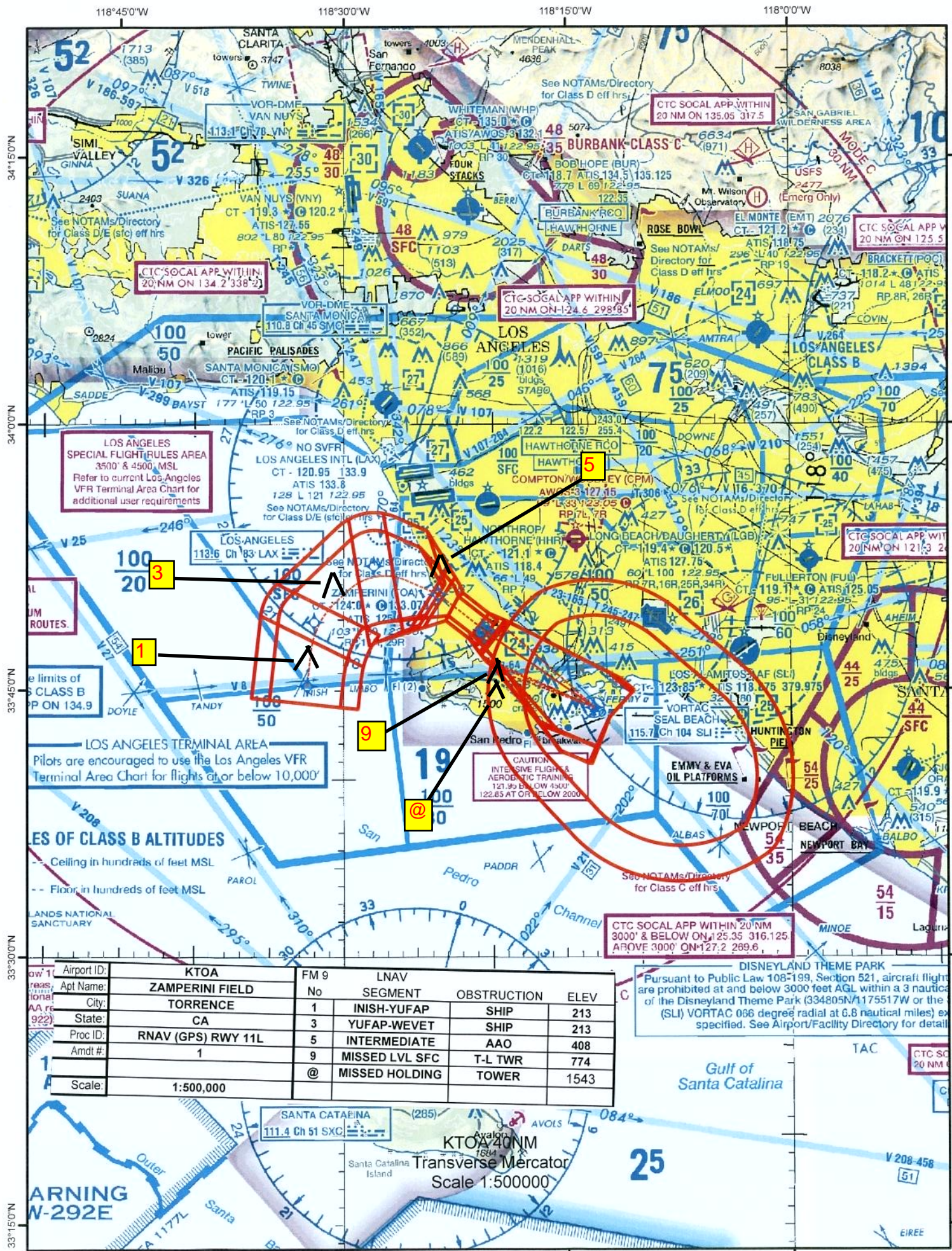
118°15'0"W



Airport ID:	KTOA	FM 9	LNAV/VNAV		
Apt Name:	ZAMPERINI FIELD	No	SEGMENT	OBSTRUCTION	ELEV
City:	TORRENCE	8	VNAV FINAL	TREE	509
State:	CA	9	MISSSED LVL SFC	T-L TWR	774
Proc ID:	RNAV (GPS) RWY 11L				
Amdt #:	1				
Scale:	1:100,000				

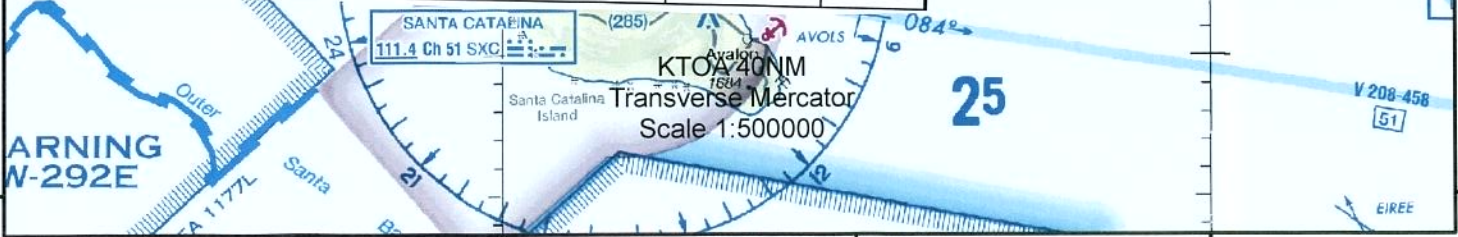
33°45'0"N





Airport ID:	KTOA	FM 9	LNAB		
Apt Name:	ZAMPERINI FIELD	No	SEGMENT	OBSTRUCTION	ELEV
City:	TORRENCE	1	INISH-YUFAP	SHIP	213
State:	CA	3	YUFAP-WEVET	SHIP	213
Proc ID:	RNAV (GPS) RWY 11L	5	INTERMEDIATE	AAO	408
Amdt #:	1	9	MISSSED LVL SFC	T-L TWR	774
		@	MISSSED HOLDING	TOWER	1543
Scale:	1:500,000				

DISNEYLAND THEME PARK
Pursuant to Public Law 108-199, Section 521, aircraft flight are prohibited at and below 3000 feet AGL within a 3 nautical miles of the Disneyland Theme Park (334805N/1175517W or the (SLI) VORTAC 066 degree radial at 6.8 nautical miles) except as specified. See Airport/Facility Directory for details.



INFORMATION ONLY

TERMINAL AIRSPACE DATA REQUIREMENTS

CITY: **TORRANCE**

STATE: **CA**

AIRPORT NAME: **ZAMPERINI FIELD**

ID: **KTOA**

PROCEDURE: **RNAV (GPS) RWY 11L**

AMDT: **ORIG**

DOCKET#: **NOT REQUIRED**

(96-AXX-X/Required/Not Required)

ALL DIST TO 1/100 NM; ELEV TO NEAREST FT; COORD TO 1/100 SEC; DEG TO 1/100 DG.

- | | | | |
|---|---------------------------------|--------------------------------|---------------|
| 1. Distance from | <u>THLD</u> | to 1000' point | <u>2.90</u> |
| <small>(Enter THLD, FAF, ARP, FACILITY, as appropriate)</small> | | | |
| 2. Width of | <u>FINAL</u> | segment at 1000' point | <u>1.88</u> |
| <small>(Enter appropriate segment, final, intermediate, etc.)</small> | | | |
| 3. True Course of | <u>FINAL</u> | segment containing 1000' point | <u>128.43</u> |
| 4. High Terrain in | <u>FINAL</u> | segment containing 1000' point | <u>210</u> |
| 5. Distance from | <u>THLD</u> | to 1500' point | <u>11.14</u> |
| <small>(If 1500' point in PT maneuvering area or holding pattern note in remarks)</small> | | | |
| 6. Width of | <u>INTERMEDIATE</u> | segment at 1500' point | <u>4.00</u> |
| 7. True Course of | <u>INTERMEDIATE</u> | segment containing 1500' point | <u>128.13</u> |
| 8. High Terrain in | <u>INTERMEDIATE</u> | segment containing 1500' point | <u>208</u> |
| 9. Threshold Coordinates (if straight-in) ... | <u>334825.69N / 1182039.39W</u> | | |
| 10. ARP Coordinates | <u>334812.20N / 1182022.60W</u> | | |
| 11. Runway Approach End and distance furthest from ARP | RWY | <u>29R</u> | |
| | Distance | <u>0.41</u> | NM |
| 12. FAF Coordinates | <u>335024.31N / 1182338.41W</u> | | |

REMARKS: Approach/Drawing attached.