

Flight Procedure Tracking Form		Action: FLIGHT CHECK	Task Type: IAP	Date Open: 11/10/2015	Task #: 2014100726414501002	Request #: 20141007264145
Procedure: RNAV (GPS) RWY 29R AMDT 1			Airport ID: KTOA	Airport: ZAMPERINI FIELD		Reimbursable #: NO
City: TORRANCE	ST: CA	GPS #:	Estimated Chart Date: 07/21/2016		FICO #:	
Fac ID: N/A		Fac. Type:			Specialist: HERMAN ROGERS	
Procedure Review						
	Rec'd	Rel'd	Full Name	Comments		
Lead:	01/28/2016					
QA:						
Liaison:						
Procedure Comments:			ENROUTE-NON	Remark Type: INFORMATION		
CONTACT: ALLEN WILL/JOHNNY BAKER, SUB-TEAM MANAGERS, 405.954.6103/5148						

WAAS CH 56425 W29A	APP CRS 294°	Rwy Idg TDZE Apt Elev	4461 97 103
--	------------------------	-----------------------------	--

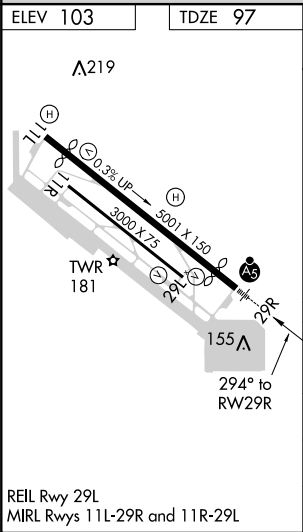
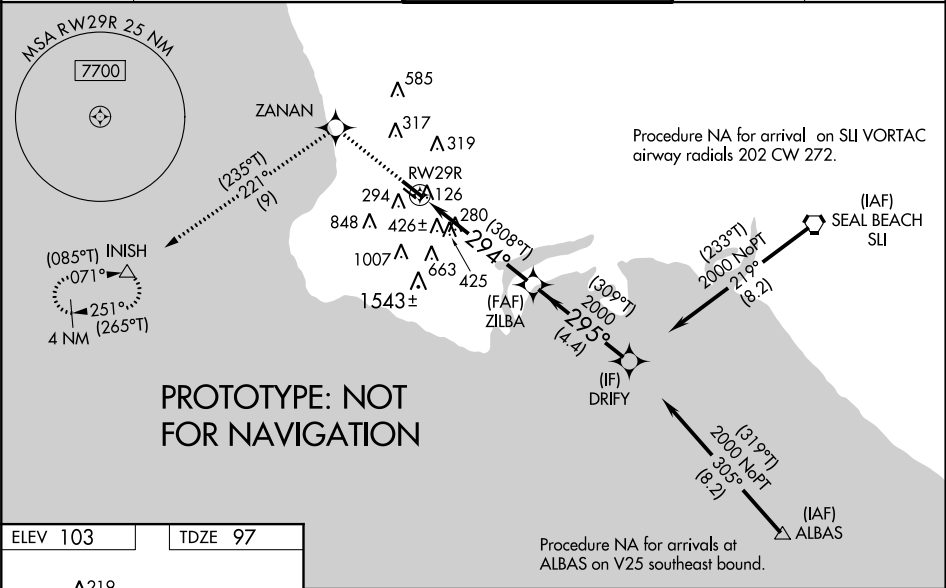
RNAV (GPS) RWY 29R
ZAMPERINI FIELD (TOA)

⚠ For uncompensated Baro-VNAV systems, LNAV/VNAV NA below 3°C (38°F) or above 54°C (130°F). Circling NA SW of Rwy 11R-29L. For inop ALS, increase LPV all Cats visibility to ½ SM. For inop ALS when using Los Angeles Intl altimeter setting, increase LPV all Cats visibility to ¾ SM. LNAV/VNAV visibility all Cats to 2 SM, and LNAV Cat C visibility to 1¾ SM. Baro-VNAV and VDP NA when using Los Angeles Intl altimeter setting. When local altimeter setting not received, except for operators with approved weather reporting service, use Los Angeles Intl setting: increase all DATO to 391 FEET and LNAV/VNAV DA to 763 FEET and ALL MDA 40 FEET; INCREASE LNAV/VNAV ALL CATS VISIBILITY AND LNAV Cat C VISIBILITY 1/8 SM.

MALSRL

MISSED APPROACH: (Do not exceed 185 KIAS until ZANAN) Climb to 3000 direct ZANAN and on track 221° to INISH and hold, continue climb-in-hold to 3000.

ATIS 125.6	SOCAL APP CON 124.3 363.2 (Rwys 11L, 11R) 127.2 269.6 (Rwys 29L, 29R)	TORRANCE TOWER★ 133.075 257.8 (NORTH) 124.0 (CTAF) 0 257.8 (SOUTH)	GND CON 120.9	UNICOM 122.95
----------------------	---	---	-------------------------	-------------------------



3000	ZANAN	fr 221°	INISH △	VGSI and RNAV glidepath not coincident (VGSI Angle 4.00/TCH 11). ZILBA			DRIFY
* LNAV only		* 1.3 NM to RW29R		2000	(309°T) 295°	2000	GP 3.40° TCH 52
		2000	2000	2000			
CATEGORY	A	B	C	D			
LPV DA	367-1/2-270				NA		
LNAV/VNAV DA	739-1½ 642 (700-1½)				NA		
LNAV MDA	680-½	583 (600-½)	680-1¼ 583 (600-1¼)	NA			
CIRCLING	680-1	577 (600-1)	680-1¾ 577 (600-1¾)	NA			

WAAS CH 56425 W29A	APP CRS 294°	Rwy Idg TDZE 97 Apt Elev 103	4461
--	------------------------	--	-------------

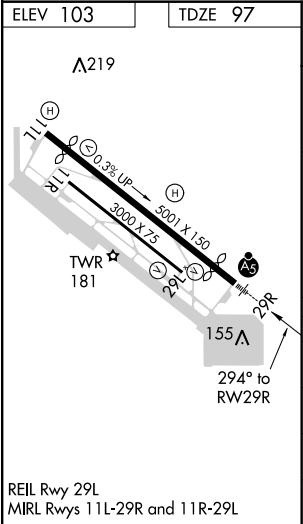
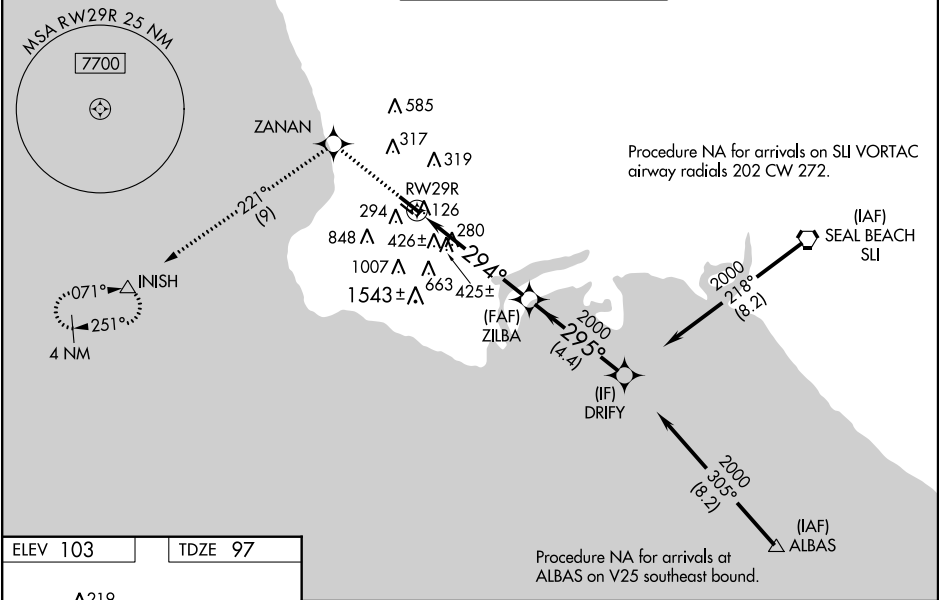
RNAV (GPS) RWY 29R
ZAMPERINI FIELD (TOA)

⚠ For uncompensated Baro-VNAV systems, LNAV/VNAV NA below -15°C (5°F) or above 54°C (130°F). When local altimeter setting not received, except for operators with approved weather reporting service, use Los Angeles Intl altimeter setting and increase all DA 24 feet and all MDA 40 feet. For inoperative MALSR, increase LNAV/VNAV visibility to 2. Circling NA southwest of Rwy 11R-29L. DME/DME RNP-0.3 NA. For inoperative MALSR when using Los Angeles Intl altimeter setting, increase LPV all Cats visibility to ¾, LNAV/VNAV visibility all Cats to 2 ¼. Baro-VNAV and VDP NA when using Los Angeles Intl altimeter setting.

MALSR

MISSED APPROACH: Climb to 3000 direct ZANAN and on track 221° to INISH and hold, continue climb-in-hold to 3000.

ATIS 125.6	SOCAL APP CON 124.3 363.2 (Rwys 11L, 11R) 127.2 269.6 (Rwys 29L, 29R)	TORRANCE TOWER* 133.075 257.8 (NORTH) 124.0 (CTAF) 0 257.8 (SOUTH)	GND CON 120.9	UNICOM 122.95
----------------------	---	---	-------------------------	-------------------------

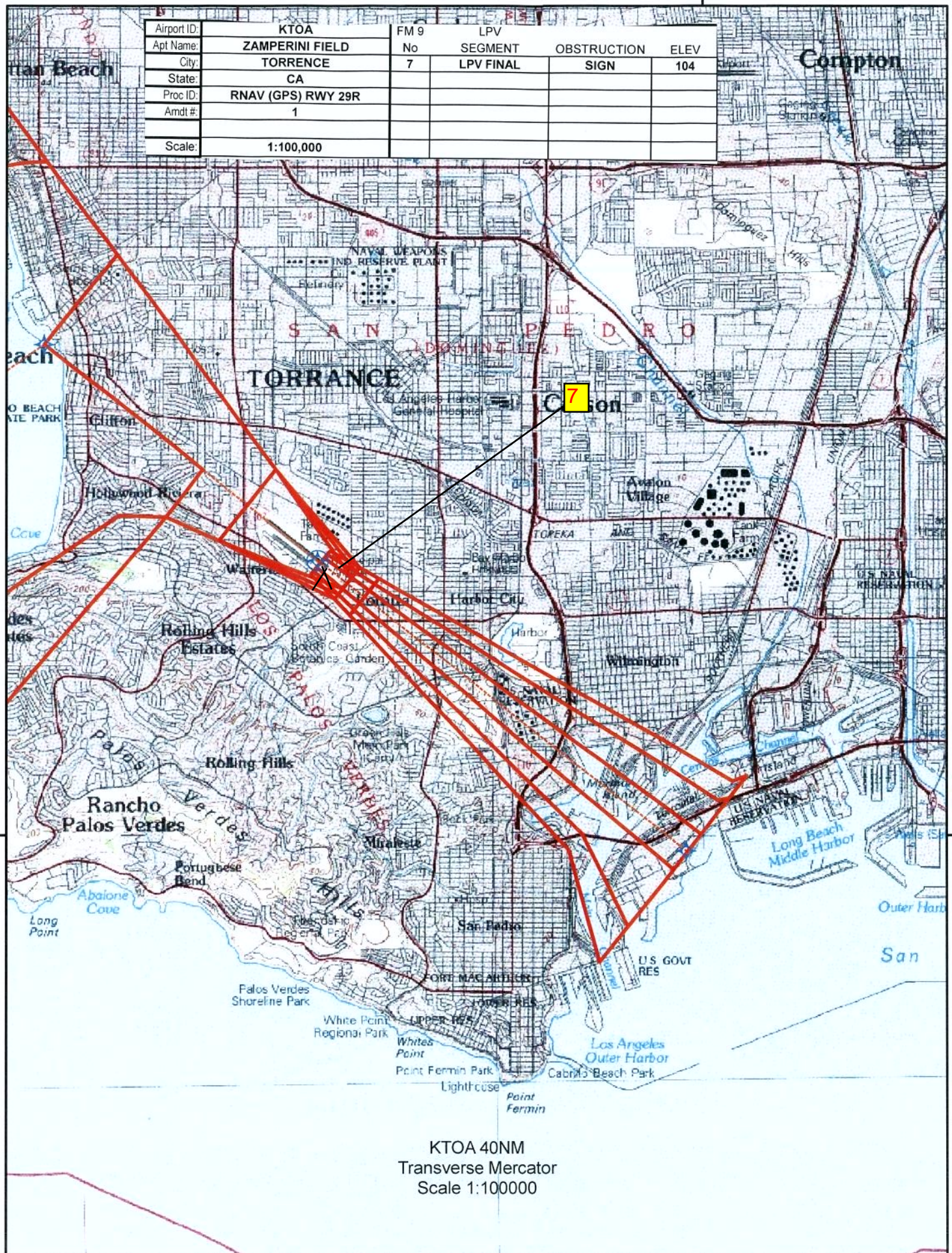


ELEV 103	TDZE 97	3000	ZANAN	tr 221°	INISH	VGSI and RNAV glidepath not coincident (VGSI Angle 4.00/TCH 11).	ZILBA	DRIFTY	2000	295°	2000	GP 3.40° TCH 51
		*LNAV only			*1.4 NM to RWY 29R							
				1.4 NM		3.8 NM		4.4 NM				
CATEGORY	A	B	C	D								
LPV DA	381-½	284 (300-½)	NA									
LNAV/VNAV DA	767-1½	670 (700-1½)	NA									
LNAV MDA	680-½	583 (600-½)	NA									
CIRCLING	680-1	577 (600-1)	NA									

118°15'0"W

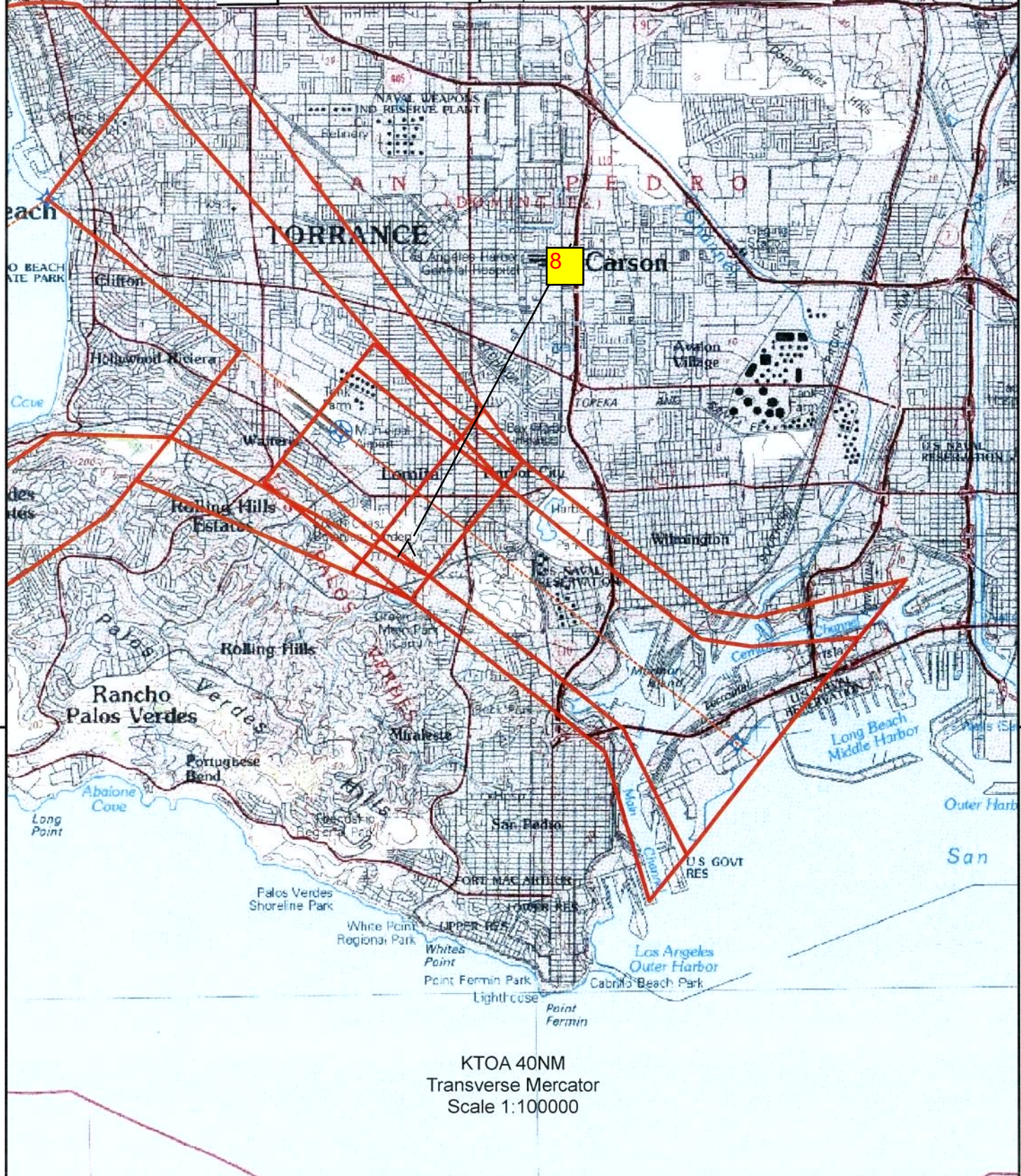
Airport ID:	KTOA	FM 9	LPV		
Apt Name:	ZAMPERINI FIELD	No	SEGMENT	OBSTRUCTION	ELEV
City:	TORRENCE	7	LPV FINAL	SIGN	104
State:	CA				
Proc ID:	RNAV (GPS) RWY 29R				
Amdt #:	1				
Scale:	1:100,000				

33°45'0"N



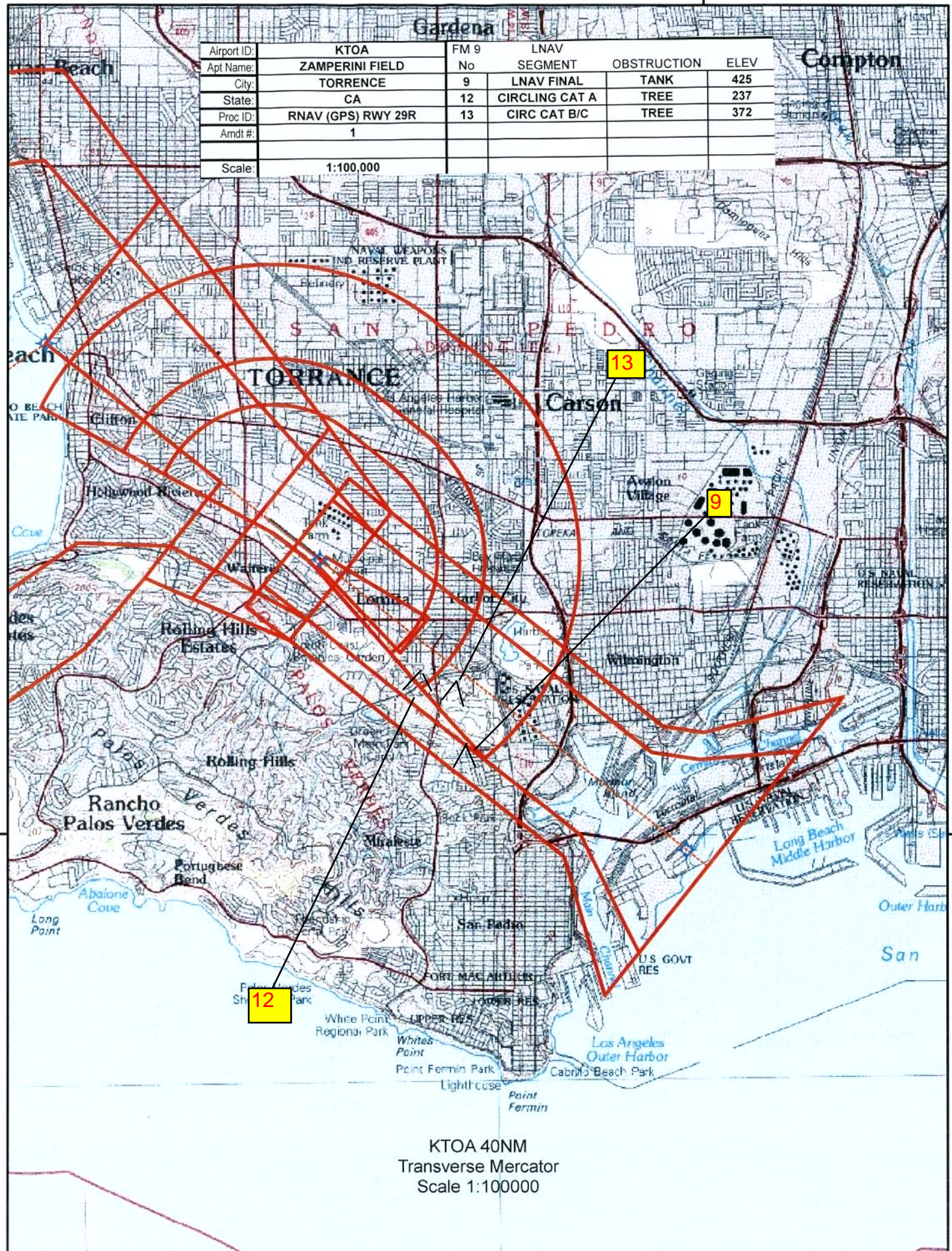
Airport ID:	KTOA	FM 9	LNAV/VNAV	OBSTRUCTION	ELEV
Apt Name:	ZAMPERINI FIELD	No	SEGMENT	TREE	426
City:	TORRENCE	8	LNAV/VNAV FINAL		
State:	CA				
Proc ID:	RNAV (GPS) RWY 29R				
Amdt #:	1				
Scale:	1:100,000				

Compton



KTOA 40NM
Transverse Mercator
Scale 1:100000

118°15'0"W



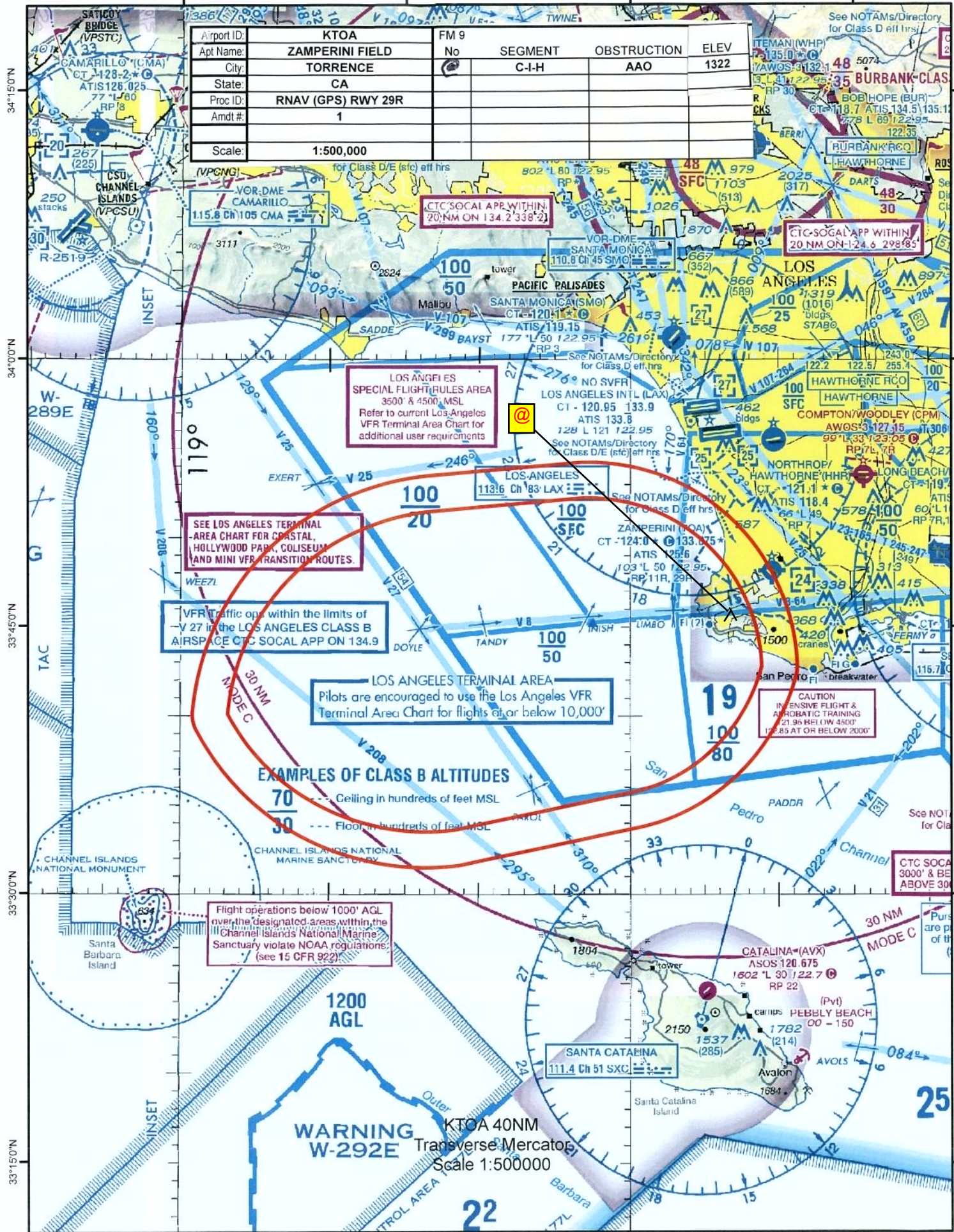


119°0'0"W

118°45'0"W

118°30'0"W

118°15'0"W



INFORMATION ONLY

TERMINAL AIRSPACE DATA REQUIREMENTS

CITY: TORRANCE

STATE: CA

AIRPORT NAME: ZAMPERINI FIELD

ID: KTOA

PROCEDURE: RNAV (GPS) RWY 29R

AMDT: ORIG

DOCKET # :

(96-AXX-X/Required/Not Required)

ALL DIST TO 1/100 NM; ELEV TO NEAREST FT; COORD TO 1/100 SEC; DEG TO 1/100 DG.

1. Distance from THLD to 1000' point 3.19
(Enter THLD, FAF, ARP, FACILITY, as appropriate)
2. Width of FINAL segment at 1000' point 1.68
(Enter appropriate segment , final, intermediate, etc.)
3. True Course of FINAL segment containing 1000' point 263.48
4. High Terrain in FINAL segment containing 1000' point 315
5. Distance from THLD to 1500' point 4.73
(If 1500' point in PT maneuvering area or holding pattern note in remarks)
6. Width of FINAL segment at 1500' point 1.98
7. True Course of FINAL segment containing 1500' point 263.48
8. High Terrain in FINAL segment containing 1500' point 315
9. Threshold Coordinates (if straight-in) ... 334801.57N / 1182003.01W
10. ARP Coordinates 334812.20N / 1182022.60W
11. Runway Approach End and distance furthest from ARP.....RWY 29R

Distance 0.41 NM
12. FAF Coordinates 334449.77N / 1181513.98W
(Click to Select)

REMARKS: