


Flight Procedure Tracking Form		Action: FLIGHT CHECK	Task Type: IAP	Date Open: 10/07/2014	Task #: 2014100726414501001	Request #: 20141007264145
Procedure: ILS OR LOC RWY 29R AMDT 3			Airport ID: KTOA	Airport: ZAMPERINI FIELD		Reimbursable #: NO
City: TORRANCE	ST: CA	GPS #:	Estimated Chart Date: 07/21/2016		FICO #:	
Fac ID: TOA		Fac. Type: ILS			Specialist: HERMAN ROGERS	
Procedure Review						
	Rec'd	Rel'd	Full Name	Comments		
Lead:	01/28/2016					
QA:						
Liaison:						
Procedure Comments:			ENROUTE-NON	Remark Type: INFORMATION		
CONTACT: ALLEN WILL/JOHNNY BAKER, SUB-TEAM MANAGERS, 405.954.6103/5148						



LOC/DME I-TOA	APP CRS	Rwy Idg	4461
111.9	294°	TDZE	97
Chan 56		Apt Elev	103

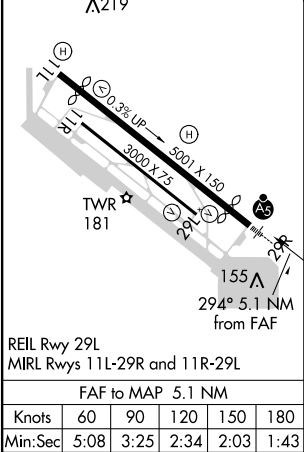
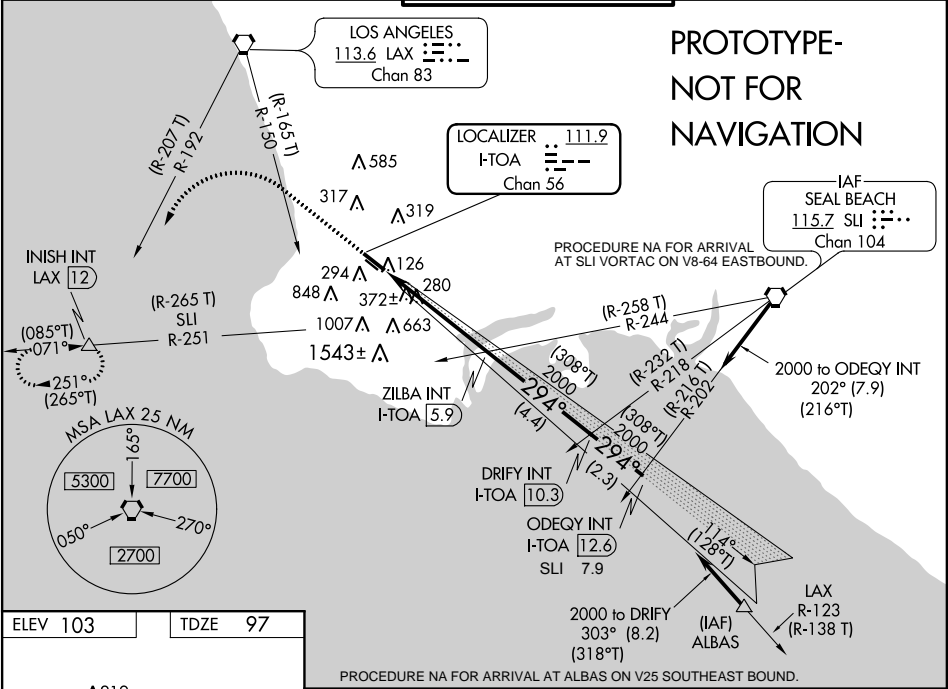
ILS or LOC RWY 29R
ZAMPERINI FIELD (TOA)

When LOCAL ALTIMETER NOT RECEIVED except for operators with approved weatherreporting service, use Los Angeles Intl altimeter setting and increase all MDA to 405 FEET and all MDA 40 feet; increase S-LOC 29R and Circling Cat C visibility 1/8 mile. For inop MALSR, increase S-ILS 29R all Cats visibility to 1/8 mile. For inop MALSR WHEN USING LOS ANGELES INTL ALTIMETER SETTING increase S-ILS 29R all Cats visibility to 1/8 mile. VDP NA when using Los Angeles Intl altimeter setting. CIRCLING NA SW OF RWY 11R-29L

MALSR

MISSED APPROACH: Climb to 3000 on heading 294° to cross LAX VORTAC R-150 then climbing left turn on heading 250 and on LAX VORTAC R-192 to INISH INT/LAX 12.4 DME and hold.

ATIS	SOCAL APP CON	TORRANCE TOWER*	GND CON	UNICOM
125.6	124.3 363.2 (Rwys 11L, 11R) 127.2 269.6 (Rwys 29L, 29R)	133.075 257.8 (NORTH) 124.0 (CTAF) 257.8 (SOUTH)	120.9	122.95



PROCEDURE NA FOR ARRIVAL AT ALBAS ON V25 SOUTHEAST BOUND.			
3000	LAX R-150	LAX R-192	INISH
hdg 294°	hdg 250°		
*LOC only.			
ZILBA INT I-TOA 5.9	DRIFY INT I-TOA 10.3		
I-TOA 0.8	*I-TOA 2.1	(308°T) 294°	2000
		2000	
			GS 3.40 TCH 52
	1.3	3.9 NM	4.4 NM
CATEGORY	A	B	C
S-ILS 29R	381-1/2	284 (300-1/2)	NA
S-LOC 29R	640-1/2	543 (600-1/2)	640-1 1/8 543 (600-1 1/8)
CIRCLING	640-1 537 (600-1)	680-1 577 (600-1)	680-1 5/8 577 (600-1 5/8)

OLD

TORRANCE, CALIFORNIA

AL-5179 (FAA)

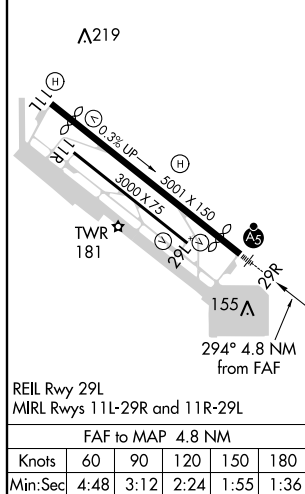
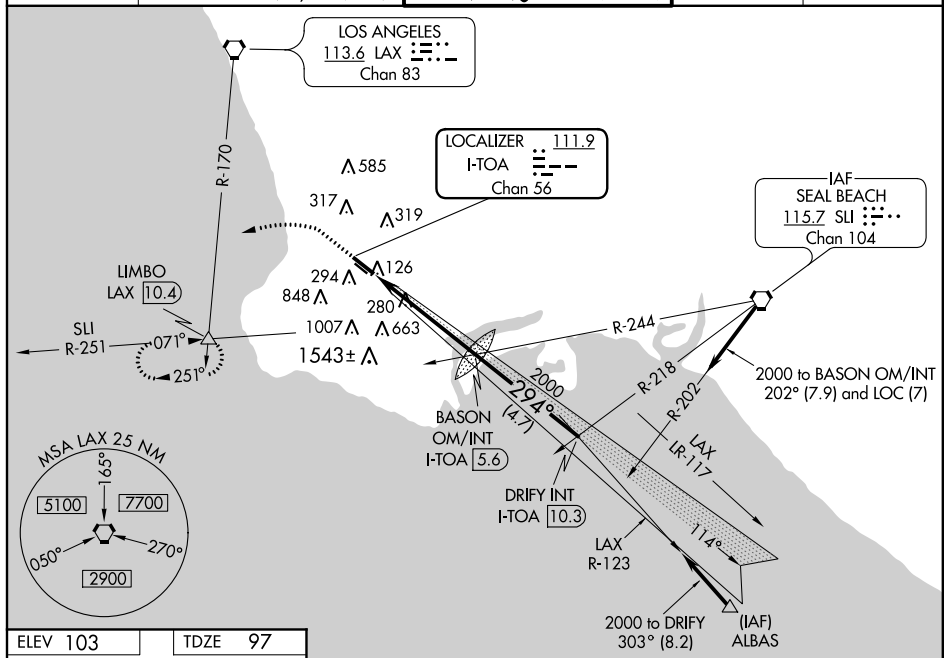
15008

LOC/DME I-TOA 111.9 Chan 56	APP CRS 294°	Rwy Idg 4461 TDZE 97 Apt Elev 103
---	------------------------	--

ILS or LOC RWY 29R ZAMPERINI FIELD (TOA)

<p>⚠ When control tower closed, except for operators with approved weather reporting service, use Los Angeles altimeter setting. Inoperative table does not apply. Circling NA southwest of Rwy 11R-29L.</p>	<p>MALS R AS</p>	<p>MISSED APPROACH: Climb to 1100 then climbing left turn to 3000 via heading 250° and LAX R-170 to LIMBO INT/LAX 10.4 DME and hold.</p>
--	----------------------	--

<p>ATIS 125.6</p>	<p>SOCAL APP CON 124.3 363.2 (Rwys 11L, 11R) 127.2 269.6 (Rwys 29L, 29R)</p>	<p>TORRANCE TOWER* 133.075 257.8 (NORTH) 124.0 (CTAF) 0 257.8 (SOUTH)</p>	<p>GND CON 120.9</p>	<p>UNICOM 122.95</p>
------------------------------	--	--	---------------------------------	---------------------------------



1100 ↑	3000 hdg 250°	LAX R-170	LIMBO △	BASON OM/INT I-TOA 5.6	DRIFT INT I-TOA 10.3	Procedure Turn NA
VGSI and ILS glidepath not coincident (VGSI Angle 4.00/TCH 11).				1895	294°	2000
I-TOA 0.8				2000*	2000	GS 3.40° TCH 52
4.8 NM				4.7 NM		*LOC only.
CATEGORY	A		B		C	D
S-ILS 29R	381-3/4 284 (300-3/4)				NA	
S-LOC 29R	620-1 523 (600-1)				NA	
CIRCLING	620-1 517 (600-1)				NA	
LOS ANGELES ALTIMETER SETTING MINIMUMS						
S-ILS 29R	405-1 308 (400-1)				NA	
S-LOC 29R	660-1 563 (600-1)				NA	
CIRCLING	660-1 557 (600-1)				NA	

TORRANCE, CALIFORNIA

Amtd 2B 15JAN09

33°48'N-118°20'W

ZAMPERINI FIELD (TOA) ILS or LOC RWY 29R

SW-3, 04 FEB 2016 to 03 MAR 2016

SW-3, 04 FEB 2016 to 03 MAR 2016

NM 1 2 3 4 5 6 7 8 9 10
FT 8000 16000 24000 32000 40000 48000 56000 64000

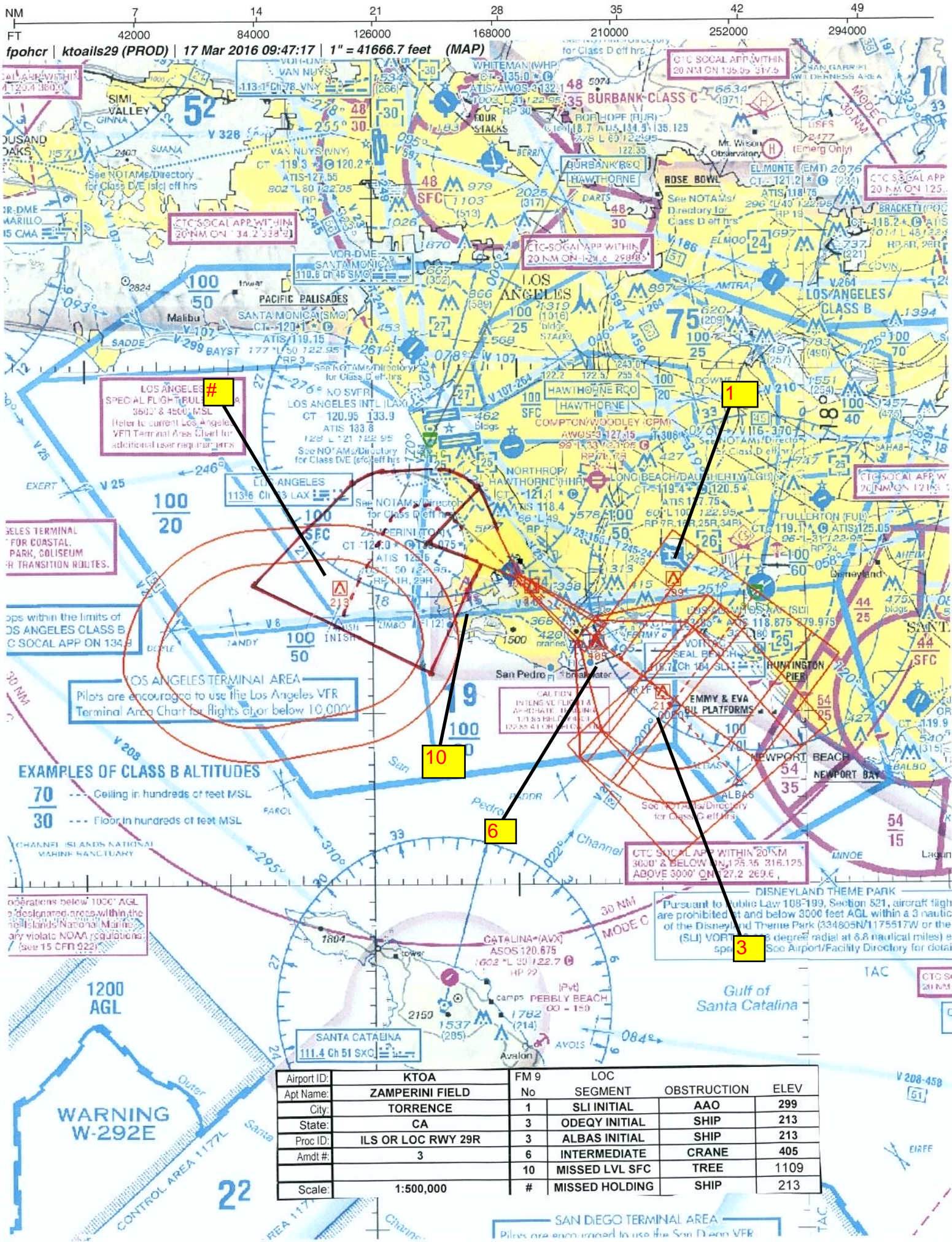
fpohcr | ktoails29 (PROD) | 17 Mar 2016 07:43:54 | 1" = 8333.3 feet (MAP)



Airport ID:	KTOA	FM 9	ILS		
Apt Name:	ZAMPERINI FIELD	No	SEGMENT	OBSTRUCTION	ELEV
City:	TORRENCE	8	ILS FINAL	SIGN	104
State:	CA	10	MISSED LVL SFC	TREE	1109
Proc ID:	ILS OR LOC RWY 29R				
Amdt #:	3				
Scale:	1:100,000				



Airport ID:	KTOA	FM 9	LOC		
Apt Name:	ZAMPERINI FIELD	No	SEGMENT	OBSTRUCTION	ELEV
City:	TORRENCE	9	LOC FINAL	TREE	372
State:	CA	12	CIRC CAT A	TREE	237
Proc ID:	ILS OR LOC RWY 29R	9	CIRC CAT B/C	TREE	372
Amdt #:	3	10	MISSD LVL SFC	TREE	1109
Scale:	1:100,000				



INFORMATION ONLY

TERMINAL

IRSPACE DATA REQUIREMENTS

EMENTS

CITY: **TORRANCE**

STATE: **CA**

AIRPORT NAME: **TORRANCE / ZAMPERINI FIELD**

ID: **KTOA**

PROCEDURE: **ILS OR LOC RWY 29R**

AMDT: **2B**

DOCKET#: **NOT REQUIRED**

(96-AXX-X/Required/Not Required)

ALL DIST TO 1/100 NM; ELEV TO NEAREST FT; COORD TO 1/100 SEC; DEG TO 1/100 DG.

1. Distance from THLD to 1000' point 2.91
(Enter THLD, FAF, ARP, FACILITY, as appropriate)
2. Width of FINAL segment at 1000' point 0.85
(Enter appropriate segment, final, intermediate, etc.)
3. True Course of FINAL segment containing 1000' point 308.45
4. High Terrain in FINAL segment containing 1000' point 200
5. Distance from THLD to 1500' point 4.30
(If 1500' point in PT maneuvering area or holding pattern note in remarks)
6. Width of FINAL segment at 1500' point 1.15
7. True Course of FINAL segment containing 1500' point 308.45
8. High Terrain in FINAL segment containing 1500' point 200
9. Threshold Coordinates (if straight-in) ... 334801.57N / 1182003.01W
10. ARP Coordinates 334812.20N / 1182022.60W
11. Runway Approach End and distance furthest from ARP RWY 29R
Distance 0.41 NM
12. FAF Coordinates 334503.01N / 1181533.07W

REMARKS: Approach/Drawing attached.