


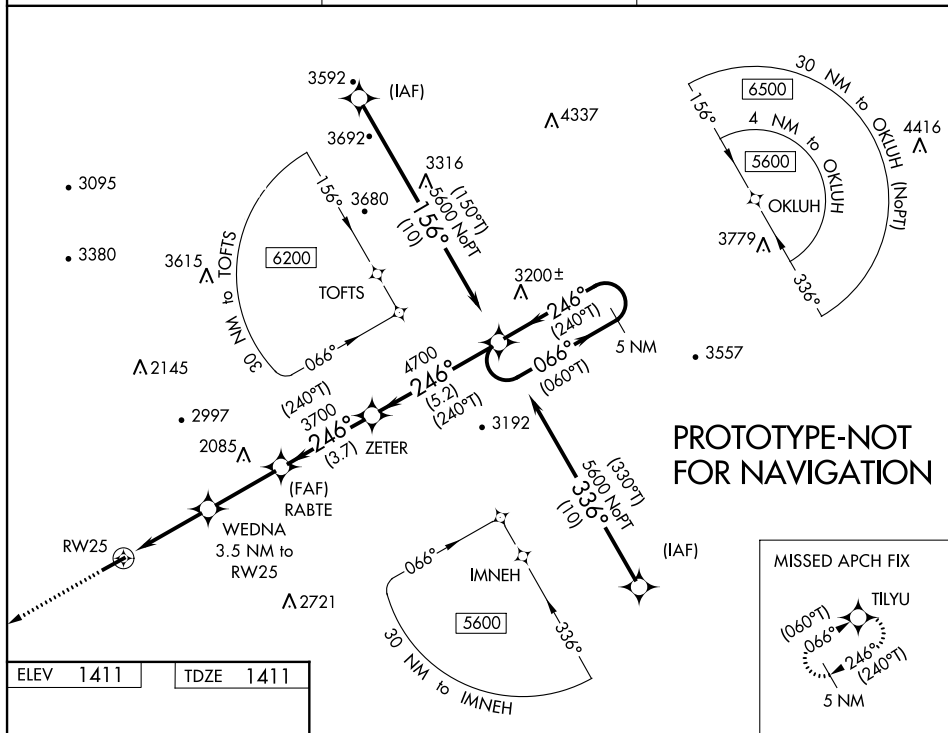
<b>Flight Procedure Tracking Form</b>		<b>Action:</b> FLIGHT CHECK	<b>Task Type:</b> IAP	<b>Date Open:</b> 10/02/2014	<b>Task #:</b> 2014100230357601002	<b>Request #:</b> 20141002303576
<b>Procedure:</b> RNAV (GPS) RWY 25 AMDT 2			<b>Airport ID:</b> K0VG	<b>Airport:</b> LEE COUNTY		<b>Reimbursable #:</b> NO
<b>City:</b> JONESVILLE	<b>ST:</b> VA	<b>GPS #:</b>	<b>Estimated Chart Date:</b> 01/05/2017		<b>FICO #:</b>	
<b>Fac ID:</b> N/A		<b>Fac. Type:</b>		<b>Specialist:</b> ROSE BOONE		
<b>Procedure Review</b>						
	<b>Rec'd</b>	<b>Rel'd</b>	<b>Full Name</b>	<b>Comments</b>		
<b>Lead:</b>	08/06/2015	11/07/2016	CASIMIR TABAKA	QUALITY		
<b>QA:</b>	11/07/2016	10/20/2016	ERIC HILL	4 11/8CTabaka		
<b>Liaison:</b>	10/20/2016	10/20/2016	MARY MCDONALD	CHECKED		
<b>Procedure Comments:</b>			<b>ENROUTE-NON</b>			
			<b>Remark Type:</b> INFORMATION			
CONTACT: JULIE MORGAN, AJV-5412 LEAD, 405-954-8568.						
11/07/2016: THIS IS AN UPDATED COPY OF THE FORM DEVELOPED ON 06/07/2016.						
1. REMOVED REFERENCE TO CAT D FROM CHANGES AND REASONS.						

WAAS CH <b>82717</b> <b>W25A</b>	APP CRS <b>246°</b>	Rwy Idg <b>5003</b> TDZE <b>1411</b> Apt Elev <b>1411</b>
--	------------------------	---

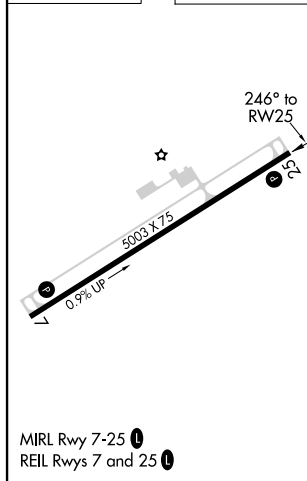
# RNAV (GPS) RWY 25

 <p>DME/DME RNP-0.3 NA. Helicopter visibility reduction below 1 SM NA.</p>	<p>MISSED APPROACH: Climb to 5000 direct TILYU and hold, continue climb-in-hold to 5000.</p>
---	--

AWOS-3 <b>120.125</b>	ATLANTA CENTER <b>127.55 269.50</b>	CTAF <b>122.90</b>
--------------------------	--	-----------------------



ELEV	1411		TDZE	1411
------	------	--	------	------



5 NM Holding Pattern

VGS1 AND RNAV GLIDEPATH NOT COINCIDENT (3.25/44)

OKLUH

ZETER

RABTE

WEDNA 3.5 NM to RW25

\* LNAV only

\* 2.2 NM to RW25

RW25

3700

240°

246°

240°

066°

246°

240°

4700

\*2580

3700

GP 3.25° TCH 58

2.2 NM

1.3

3.0 NM

3.7 NM

5.2 NM

CATEGORY	A	B	C	D
LPV DA	1714-1	303 (400-1)		NA
LNAV/VNAV DA	2284-3	873 (900-3)		NA
LNAV MDA	2220-1 809 (900-1)	2220-1 1/4 809 (900-1 1/4)	2220-2 1/2 809 (900-2 1/2)	NA
<b>C</b> CIRCLING	2220-1 809 (900-1)	2600-3 1189 (1200-3)		NA

WAAS CH <b>82717</b> <b>W25A</b>	APP CRS <b>246°</b>	Rwy Idg <b>5003</b> TDZE <b>1411</b> Apt Elev <b>1411</b>
--	------------------------	---

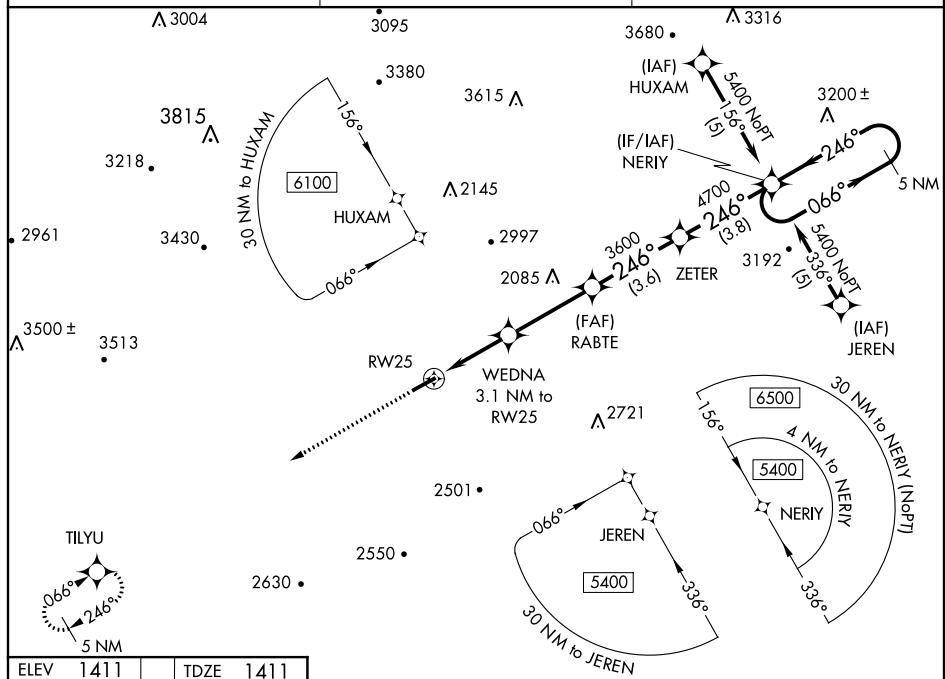
## RNAV (GPS) RWY 25

LEE COUNTY (OVG)

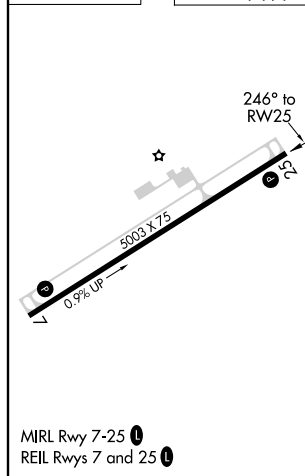
**T** DME/DME RNP-0.3 NA. Visibility reduction by helicopters NA. When local altimeter setting not received, use Middlesboro, KY altimeter setting and increase all DA 95 feet and LPV visibility all Cats ¼ mile; increase all MDA 100 feet and increase LNAV and Circling visibility Cts B and C ¼ mile.


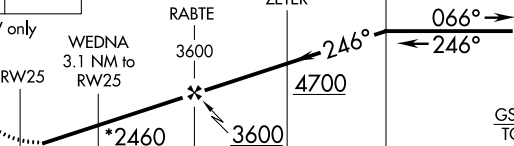
**MISSED APPROACH:** Climb to 5000 direct TILYU and hold, continue climb-in-hold to 5000.

AWOS-3 <b>120.125</b>	ATLANTA CENTER <b>127.55 269.50</b>	CTAF <b>122.90</b>
--------------------------	--	-----------------------



ELEV	1411		TDZE	1411
------	------	--	------	------



5000 ↑	TILYU 	VGS1 and RNAV glidepath not coincident (VGS1 Angle 3.25/TCH 44).		5 NM Holding Pattern
* LNAV only				
CATEGORY		A	B	C
LPV DA	1711-1 300 (300-1)			
LNAV MDA	2320-1¼ 909 (1000-1¼)	2320-2¾ 909 (1000-2¾)	2320-3 909 (1000-3)	
CIRCLING	2320-1¼ 909 (1000-1¼)	2320-2¾ 909 (1000-2¾)	2320-3 909 (1000-3)	

JONESVILLE, VIRGINIA

Amdt 1 23SEP10

LEE COUNTY (OVG)

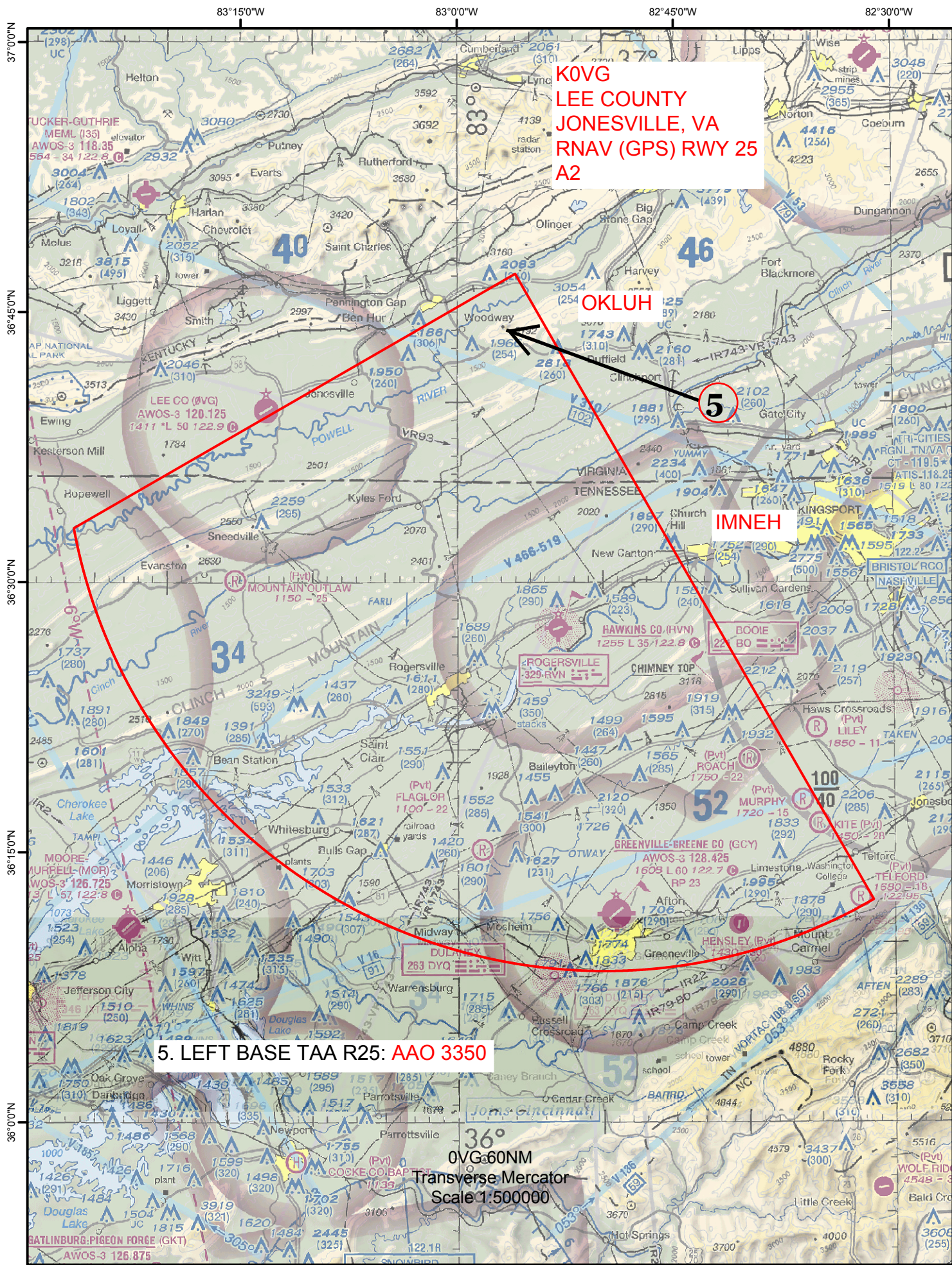
36°39'N - 83°13'W

RNAV (GPS) RWY 25

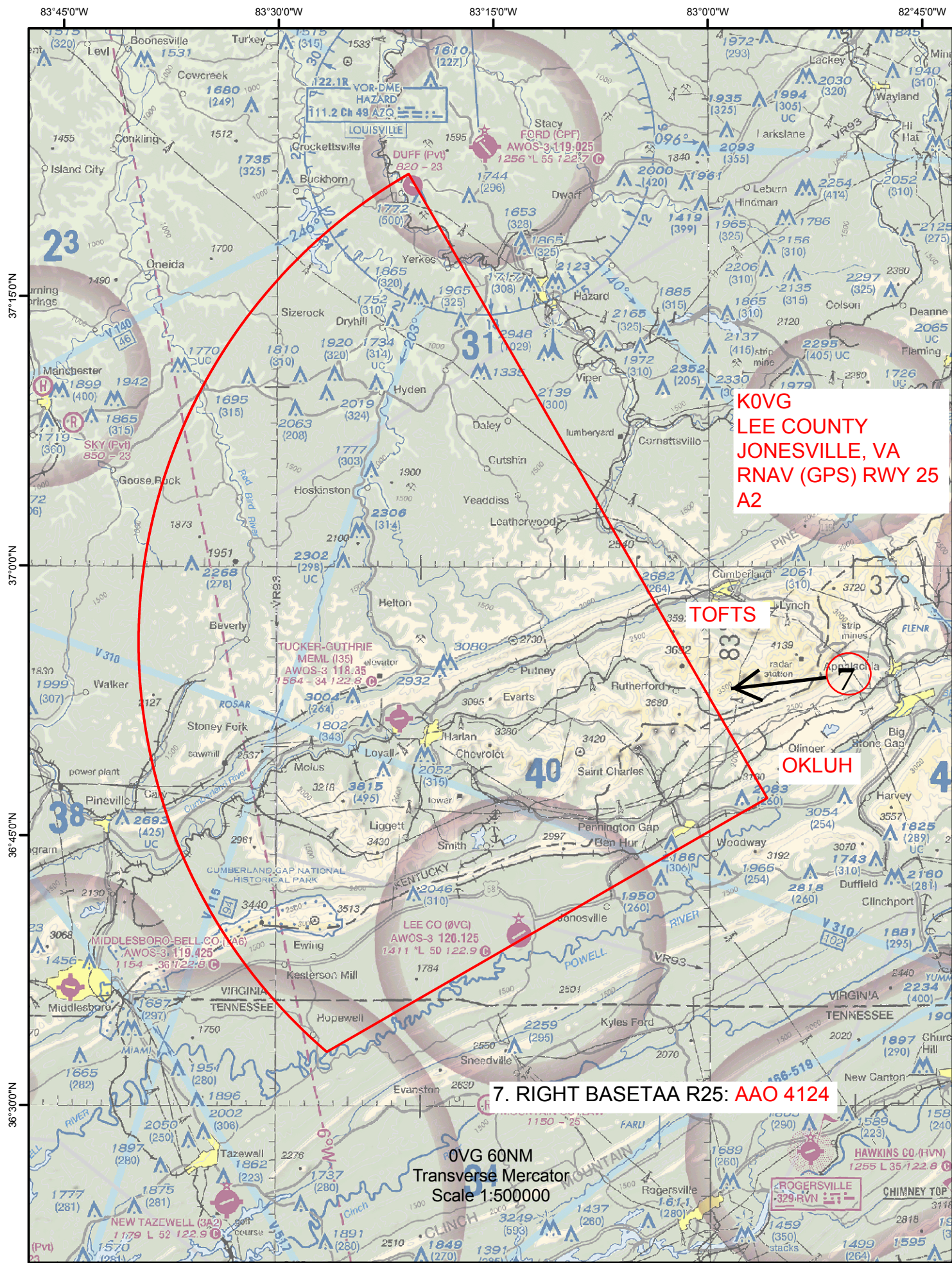
NE-3, 26 MAY 2016 to 23 JUN 2016

NE-3, 26 MAY 2016 to 23 JUN 2016











83°15'0"W 83°0'0"W 82°45'0"W 82°30'0"W 82°15'0"W

37°15'0"N

37°0'0"N

36°45'0"N

36°30'0"N

K0VG  
LEE COUNTY  
JONESVILLE, VA  
RNAV (GPS) RWY 25  
A2

3

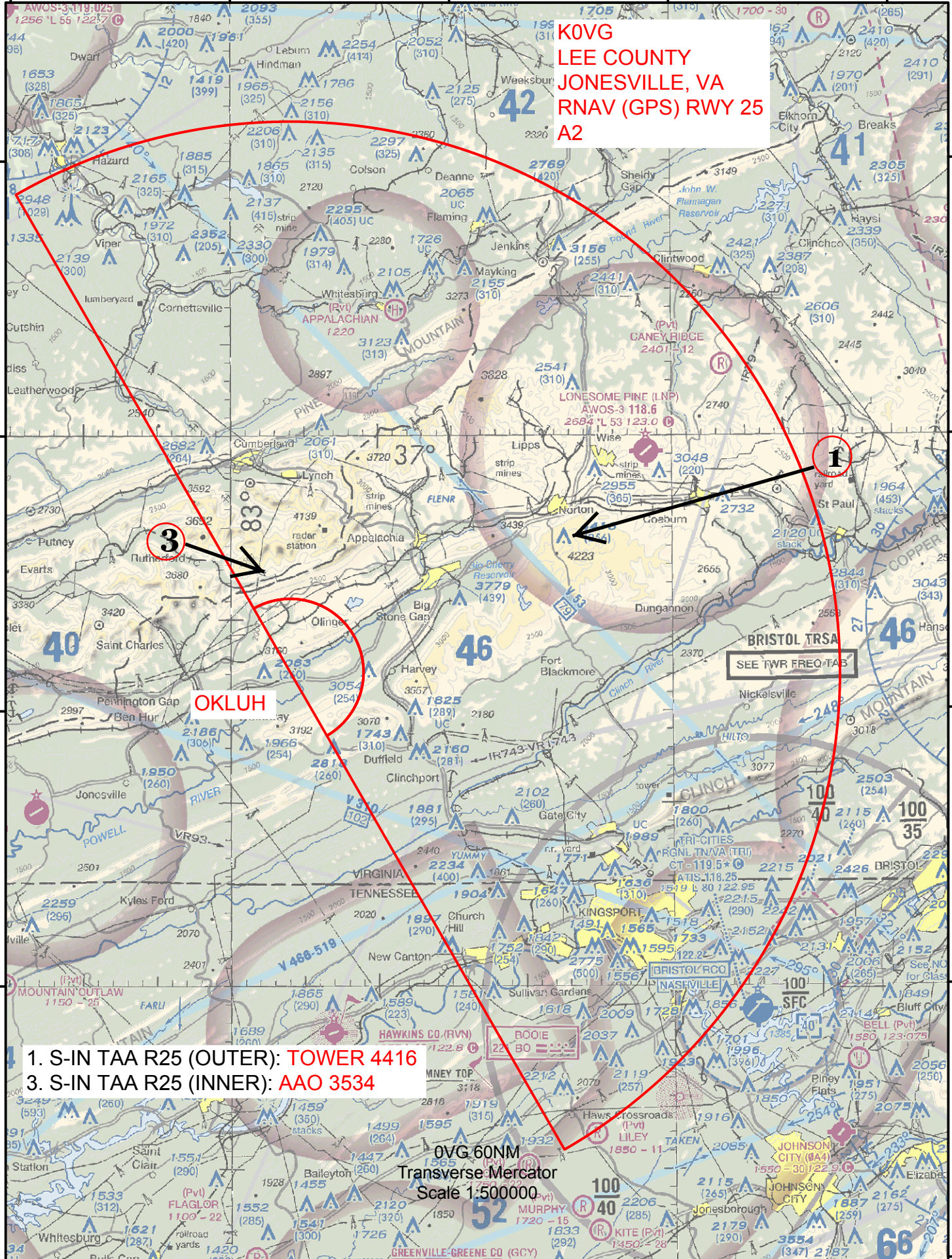
1

OKLUH

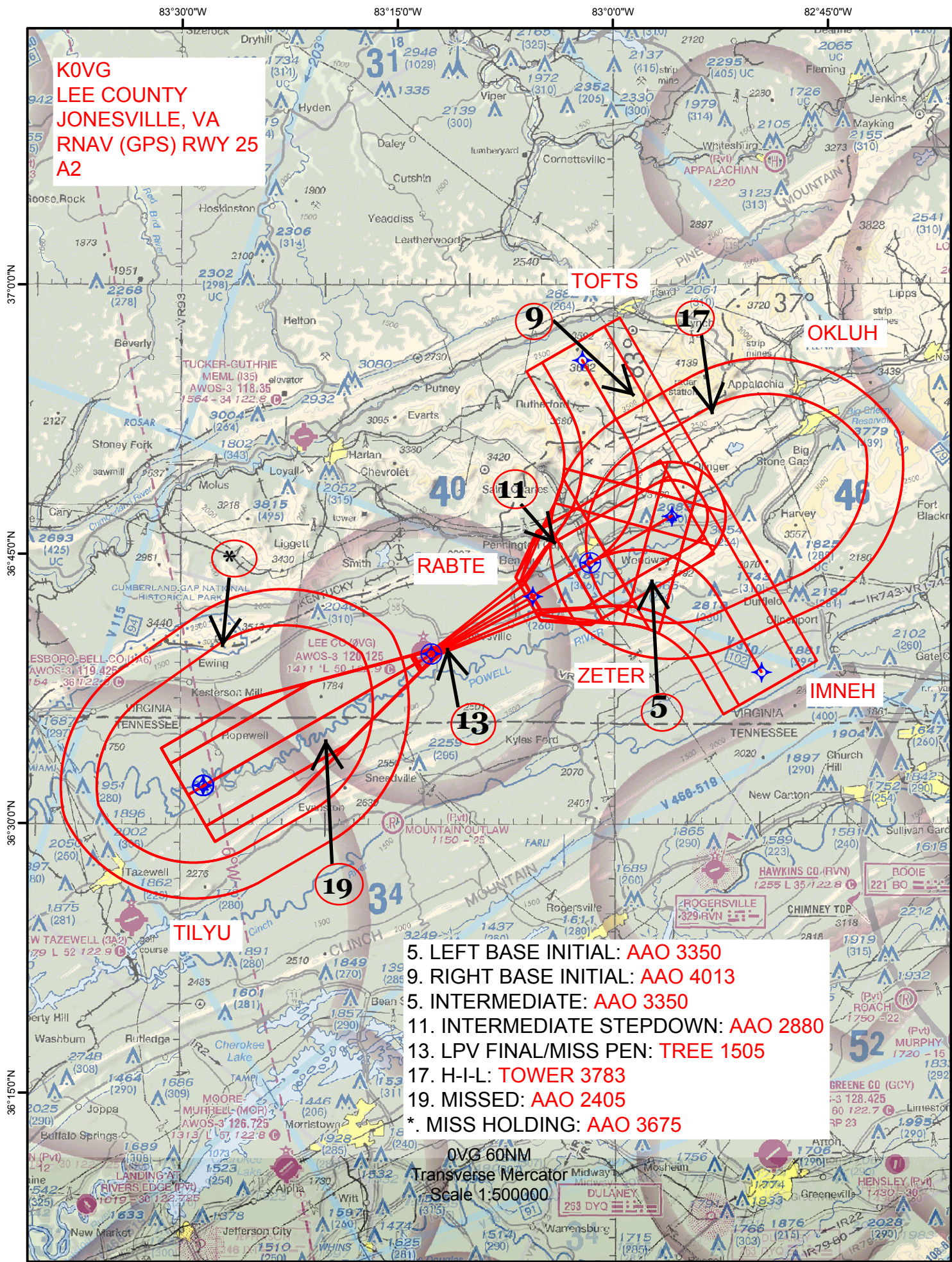
SEE TWR FREQ TAB

1. S-IN TAA R25 (OUTER): TOWER 4416
3. S-IN TAA R25 (INNER): AAO 3534

OVG 60NM  
Transverse Mercator  
Scale 1:500000





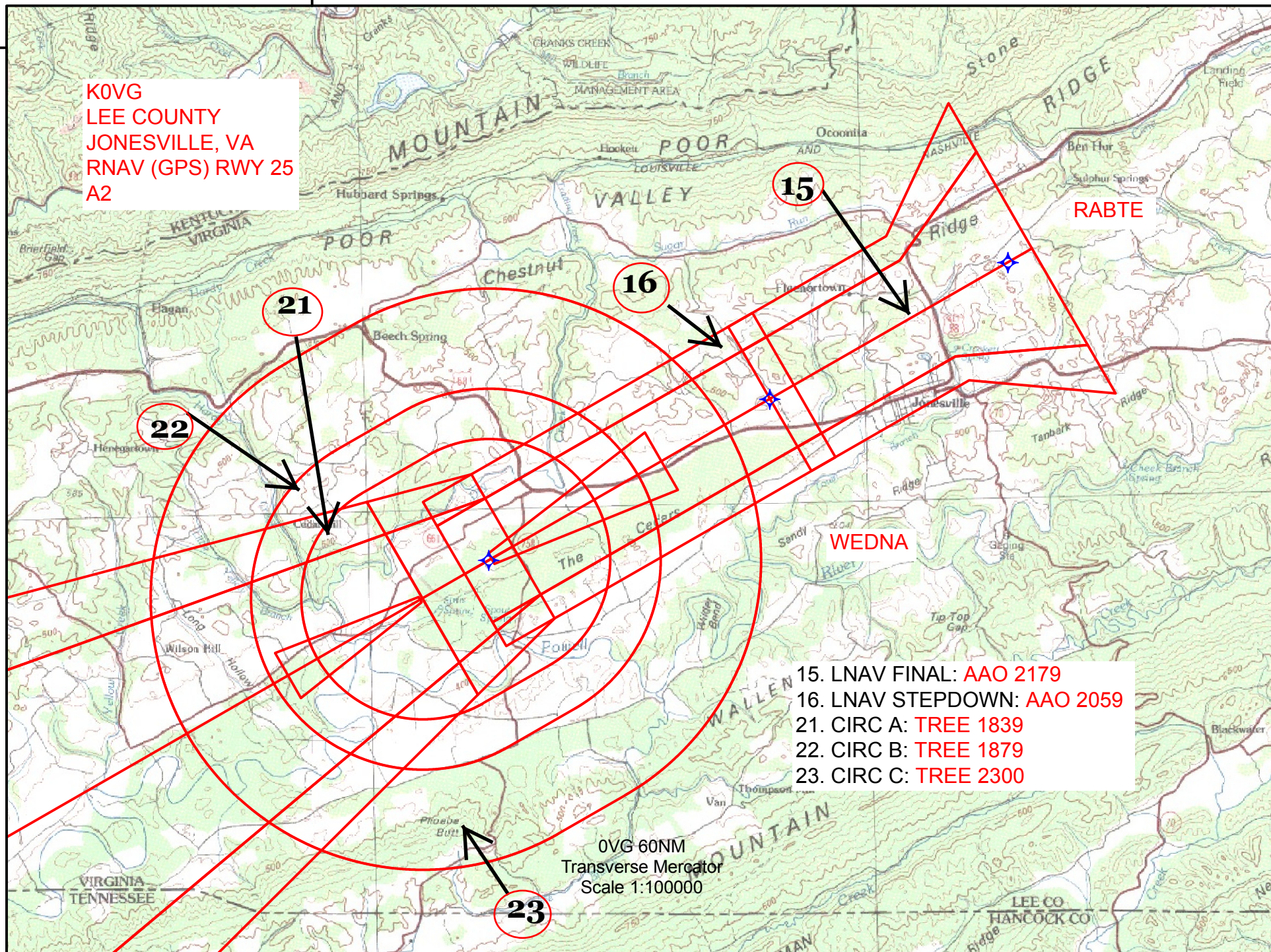




83°15'0"W

36°45'0"N

K0VG  
LEE COUNTY  
JONESVILLE, VA  
RNAV (GPS) RWY 25  
A2





83°15'0"W

36°45'0"N

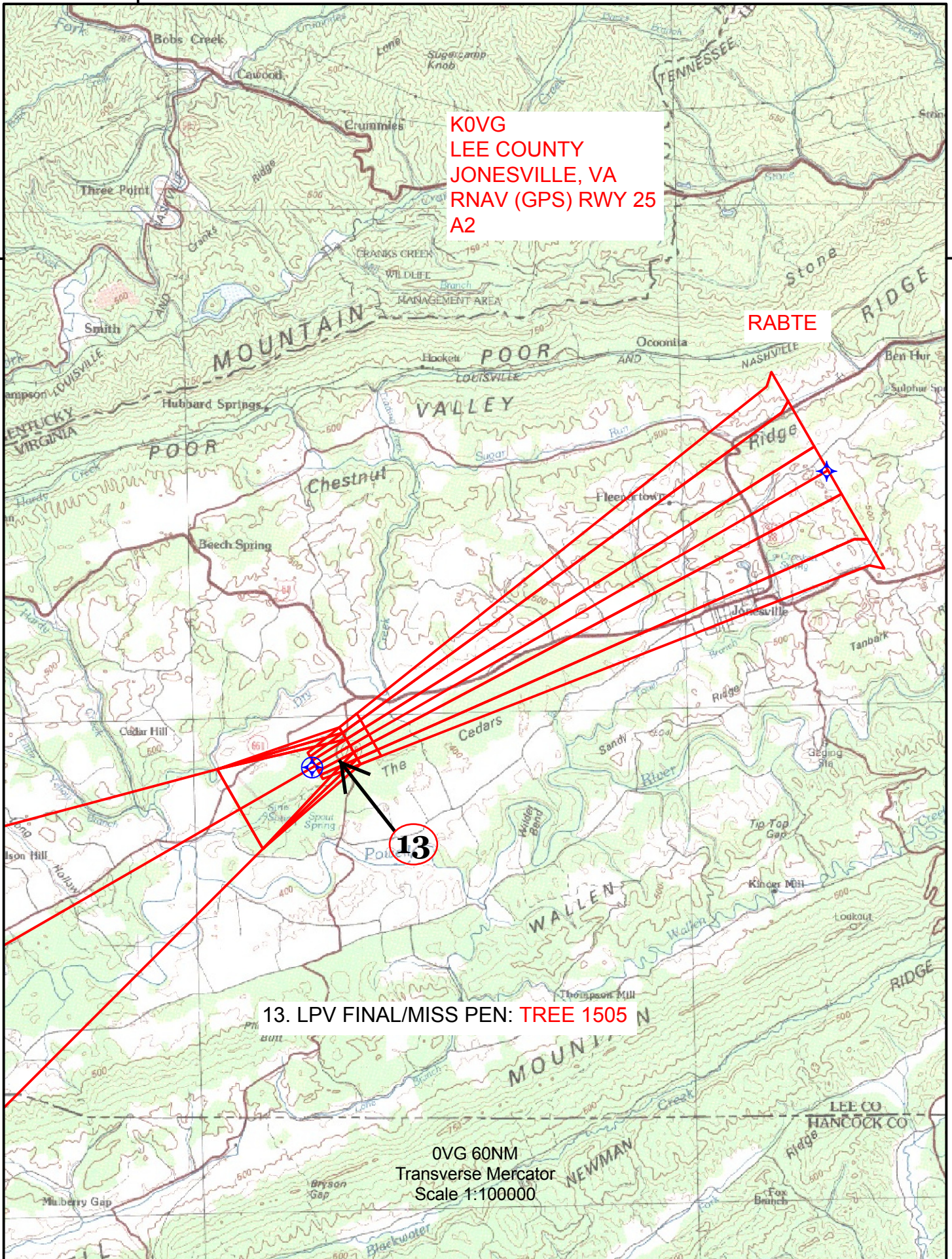
K0VG  
LEE COUNTY  
JONESVILLE, VA  
RNAV (GPS) RWY 25  
A2

RABTE

13

13. LPV FINAL/MISS PEN: TREE 1505

OVG 60NM  
Transverse Mercator  
Scale 1:100000





83°15'0"W

36°45'0"N

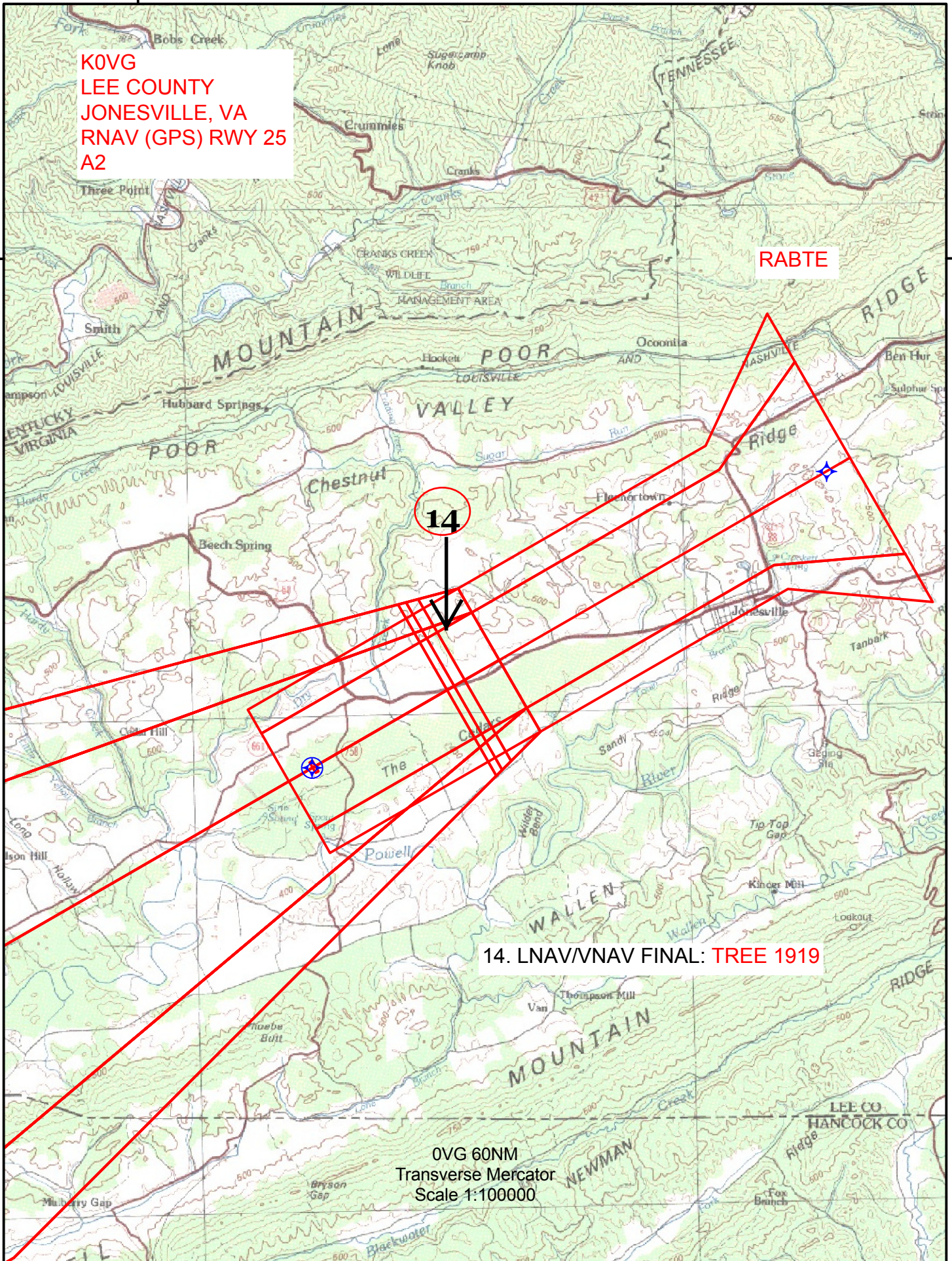
K0VG  
LEE COUNTY  
JONESVILLE, VA  
RNAV (GPS) RWY 25  
A2

RABTE

14

14. LNAV/VNAV FINAL: TREE 1919

OVG 60NM  
Transverse Mercator  
Scale 1:100000





# TERMINAL AIRSPACE DATA REQUIREMENTS

CITY:

STATE:

AIRPORT NAME:

ID:

PROCEDURE:

AMDT:

DOCKET # :

(96-AXX-X/Required/Not Required)

**ALL DIST TO 1/100 NM; ELEV TO NEAREST FT; COORD TO 1/100 SEC; DEG TO 1/100 DG.**

1. Distance from \_\_\_\_\_ to 1000' point \_\_\_\_\_

(Enter THLD, FAF, ARP, FACILITY, as appropriate)

2. Width of \_\_\_\_\_ segment at 1000' point \_\_\_\_\_

(Enter appropriate segment , final, intermediate, etc.)

3. True Course of \_\_\_\_\_ segment containing 1000' point \_\_\_\_\_

4. High Terrain in \_\_\_\_\_ segment containing 1000' point \_\_\_\_\_

5. Distance from \_\_\_\_\_ to 1500' point \_\_\_\_\_

(If 1500' point in PT maneuvering area or holding pattern note in remarks)

6. Width of \_\_\_\_\_ segment at 1500' point \_\_\_\_\_

7. True Course of \_\_\_\_\_ segment containing 1500' point \_\_\_\_\_

8. High Terrain in \_\_\_\_\_ segment containing 1500' point \_\_\_\_\_

9. Threshold Coordinates (if straight-in) ... \_\_\_\_\_ / \_\_\_\_\_

10. ARP Coordinates ..... \_\_\_\_\_ / \_\_\_\_\_

11. Runway Approach End and distance furthest from ARP.....RWY \_\_\_\_\_

Distance \_\_\_\_\_ NM

12. FAF Coordinates ..... \_\_\_\_\_ / \_\_\_\_\_

(Click to Select)

**REMARKS:**